

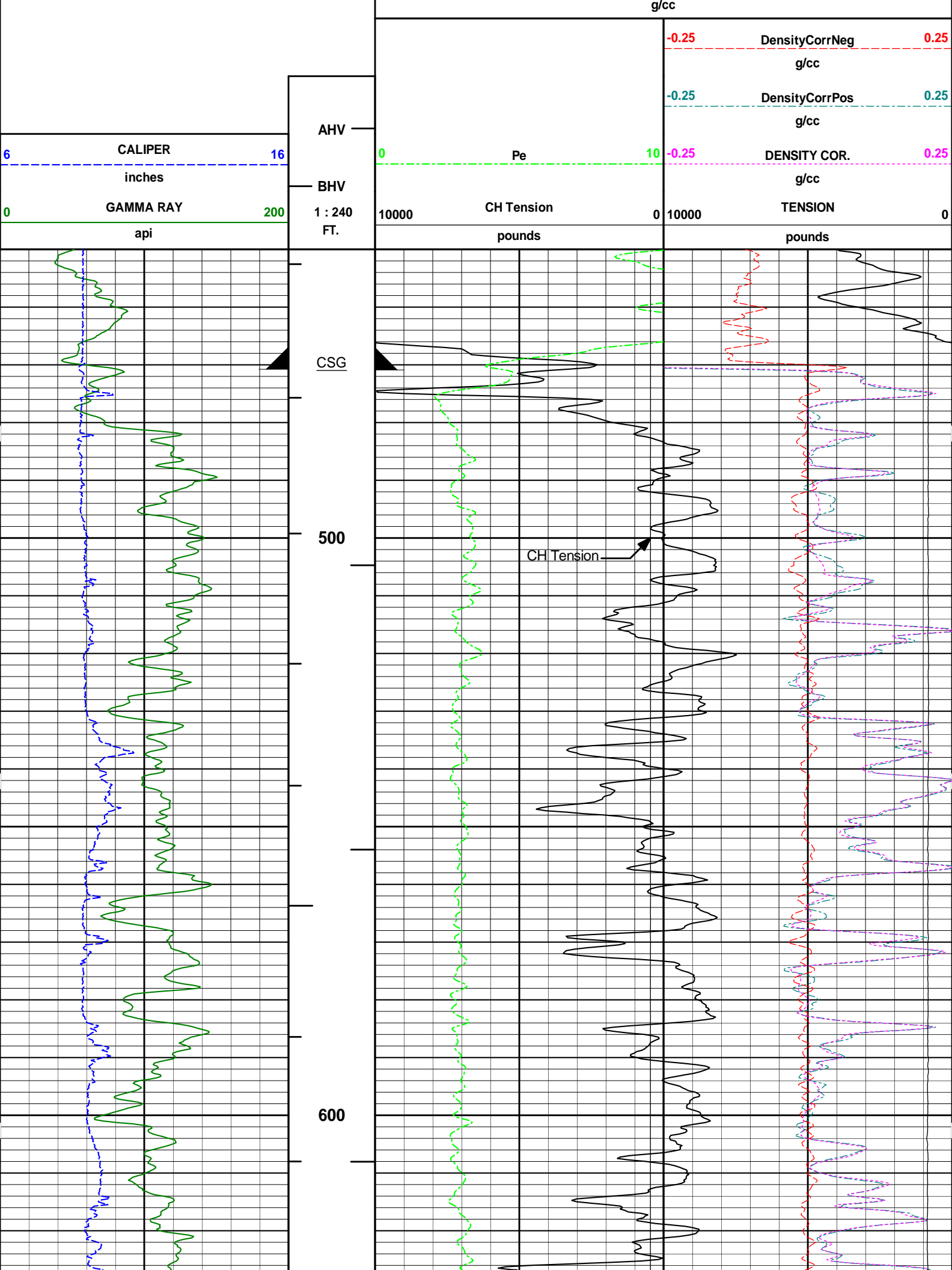
HALLBURTON

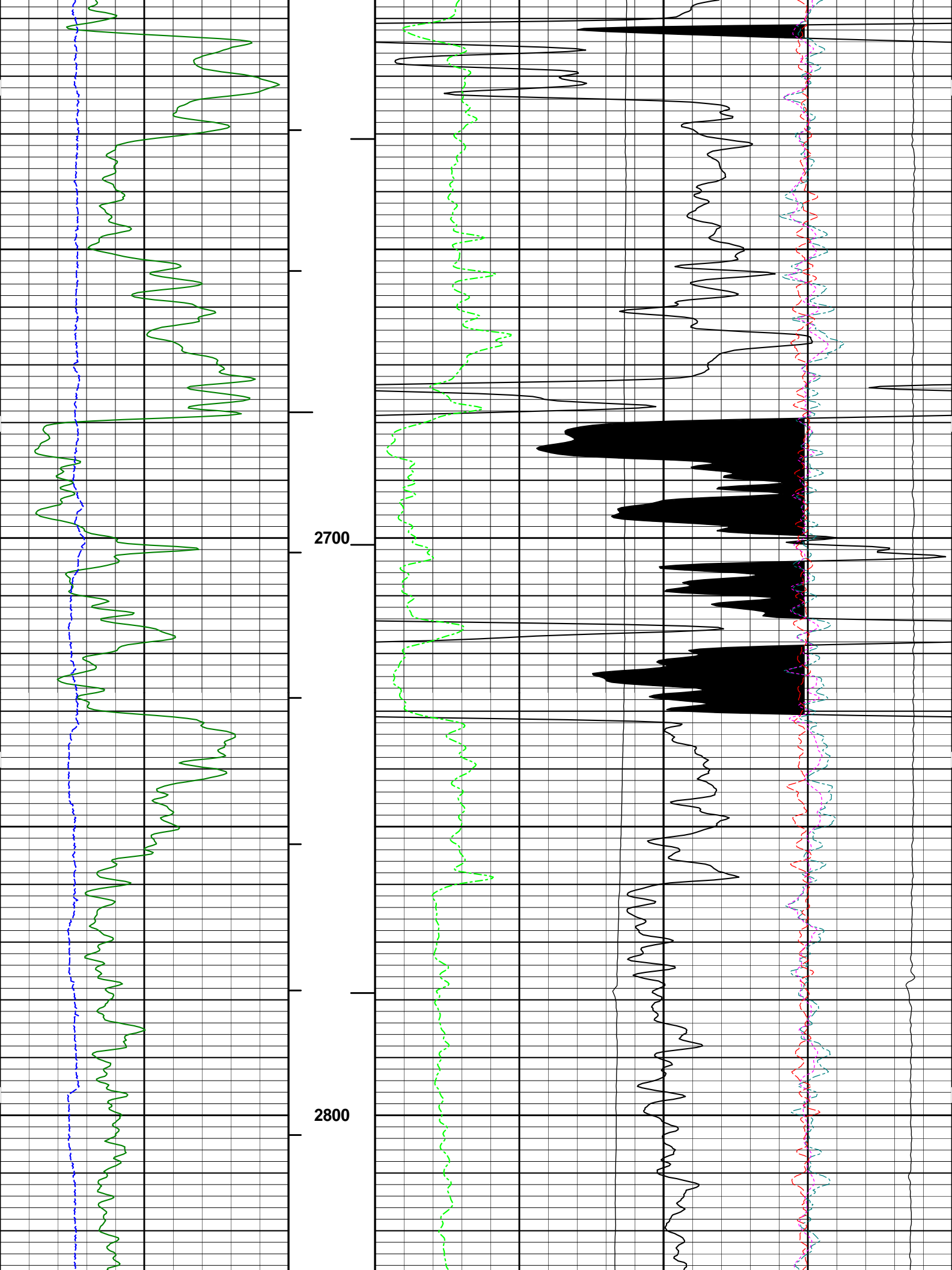
DUAL SPACED NEUTRON
SPECTRAL DENSITY

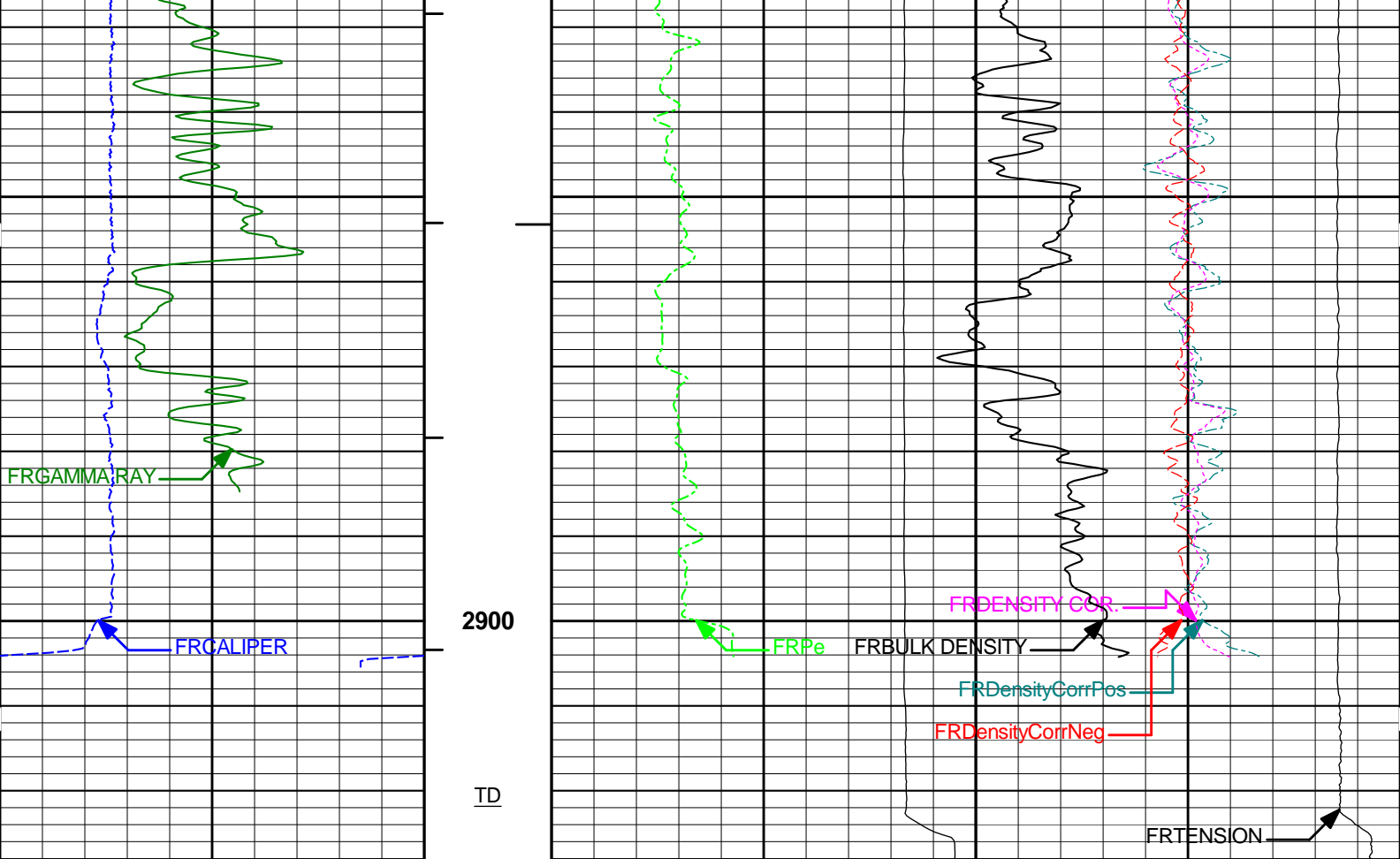
COMPANY		MCELVAIN ENERGY INC.			
WELL		PARGIN RANCH #11			
FIELD/BLOCK		IGNACIO BLANCO			
COUNTY		LA PLATA			
STATE		CO			
Permanent Datum		GL		Elev. 6450.0 ft	
Log measured from		KB		D.F. 6466.5 ft	
Drilling measured from		KB		G.L. 6450.0 ft	
Date		13-Jan-14			
Run No.		ONE			
Depth - Driller		2928.00 ft			
Depth - Logger		2922.0 ft			
Bottom - Logged Interval		2290.0 ft			
Top - Logged Interval		50.0 ft			
Casing - Driller		9.625 in @ 472.0 ft		@	
Casing - Logger		471.0 ft			
Bit Size		8.750 in		@	
Type Fluid in Hole		WATER-BASED MUD			
Density		9.2 ppq		57.00 s/qt	
PH		9.50 pH		8.4 cphm	
Source of Sample		MUD TANK			
Rm @ Meas. Temperature		2.630 ohmm @ 71.50 degF		@	
Rmf @ Meas. Temperature		0.67 ohmm @ 65.50 degF		@	
Rmc @ Meas. Temperature		2.610 ohmm @ 75.00 degF		@	
Source Rmf		MEASURED		MEASURED	
Rm @ BHT		1.68 ohmm @ 116.0 degF		@	
Time Since Circulation		6.3 hr			
Time on Bottom		13-Jan-14 04:47			
Max. Rec. Temperature		116.0 degF @ 2922.0 ft		@	
Equipment		11871076		GL CO	
Recorded By		B. RIDDEL			
Witnessed By		MARK WOLFE			

Fold here

Service Ticket No.: 901027348				API Serial No.: 05067098960000				PGM Version: WL INSITE R3.8.4 (Build 5)							
CHANGE IN MUD TYPE OR ADDITIONAL SAMPLE						RESISTIVITY SCALE CHANGES									
Date		Sample No.				Type Log		Depth		Scale Up Hole		Scale Down Hole			
Depth-Driller															
Type Fluid in Hole															
Density		Viscosity													
Ph		Fluid Loss													
Source of Sample						RESISTIVITY EQUIPMENT DATA									
Rm @ Meas. Temp		@		@		Run No.		Tool Type & No.		Pad Type		Tool Pos.		Other	
Rmf @ Meas. Temp.		@		@		ONE		ACRt 11585787		N/A		ECCENTERED		N/A	
Rmc @ Meas. Temp.		@		@				S-11585797							
Source Rmf		Rmc													
Rm @ BHT		@		@											
Rmf @ BHT		@		@											
Rmc @ BHT		@		@											
EQUIPMENT DATA															
GAMMA				ACOUSTIC				DENSITY				NEUTRON			
Run No.		ONE		Run No.				Run No.		ONE		Run No.		ONE	
Serial No.		11958949		Serial No.				Serial No.		10951300		Serial No.		10993888	
Model No.		GTET		Model No.				Model No.		SDLT		Model No.		DSNT	
Diameter		3.625"		No. of Cent.				Diameter		4.5"		Diameter		3.625"	
Detector Model No.		GTET		Spacing				Log Type		GAMMA-GAMMA		Log Type		NEU-THERM	
Type		SCINT						Source Type		Cs137		Source Type		Am241Be	
Length		8"		LSA [Y/N]				Serial No.		5153GW		Serial No.		DSN388	
Distance to Source		9'		FWDA [Y/N]				Strength		1.5Ci		Strength		15Ci	
LOGGING DATA															







0	GAMMA RAY	200	1 : 240	10000	CH Tension	0	10000	TENSION	0
	api		FT.		pounds			pounds	
6	CALIPER	16		0	Pe	10	-0.25	DENSITY COR.	0.25
	inches		BHV					g/cc	
			AHV				-0.25	DensityCorrPos	0.25
								g/cc	
							-0.25	DensityCorrNeg	0.25
								g/cc	
				2	BULK DENSITY				3
					g/cc				

HALLIBURTON Plot Time: 13-Jan-14 07:39:55
Plot Range: 450 ft to 2928.56 ft
Data: MCELV_PARGIN_11\Well Based\MAIN\
Plot File: \\POROV_RHOB_M

MAIN PASS 5" = 100'

HALLIBURTON Plot Time: 13-Jan-14 07:39:56
Plot Range: 2550 ft to 2932.94 ft
Data: MCELV_PARGIN_11\Well Based\REPEAT\
Plot File: \\POROV_RHOB_R

REPEAT PASS 5" = 100'