

WELL PAD - STATE NORTH PLATTE F-36

STATE NORTH PLATTE 11-36-1XRLNB
WELL LOCATION CERTIFICATE
330' FNL & 520' FWL NWNW (SURFACE)
531' FNL & 150' FWL NWNW (ENTRY POINT)
SECTION 36, T5N, R63W, 6TH P.M.
470' FSL & 660' FWL SWSW (BOTTOM)
SECTION 1, T4N, R63W, 6TH P.M.
WELD COUNTY, COLORADO

BONANZA CREEK
410 17th Street, Suite 1400
Denver, Colorado 80202



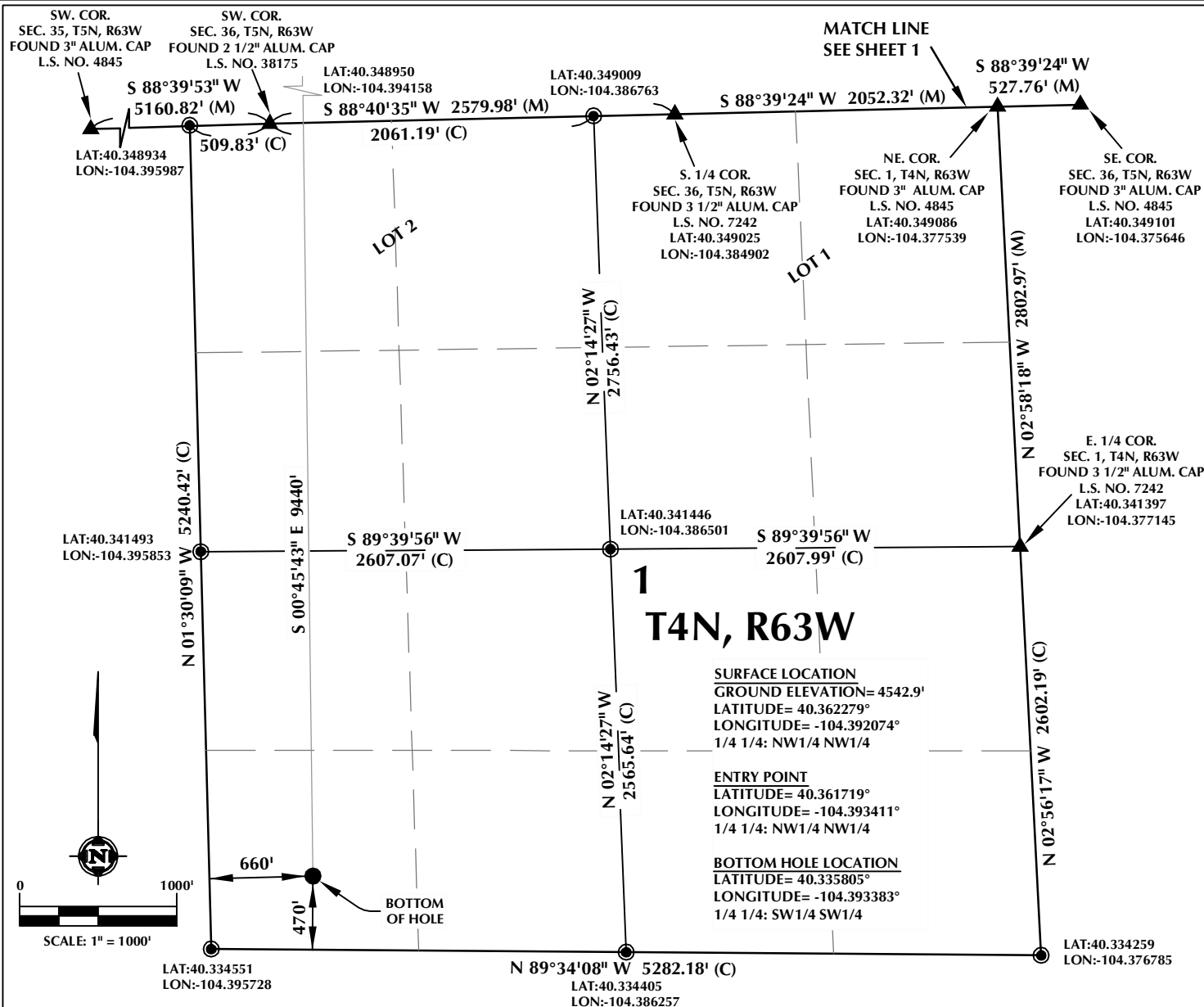
CONSULTING, LLC

SHERIDAN OFFICE
2155 North Main Street
Sheridan, Wyoming 82801
Phone 307-674-0609

LOVELAND OFFICE
1635 Foxtrail Drive, Suite 204
Loveland, Colorado 80538
Phone 970-776-4331

DRAFTED BY:	LMO	CHECKED BY:	BJR	SHEET NO:
DATE DRAFTED:	1/7/14	DATE SURVEYED:	12/10/13	1
REVISED:		FILE NAME:	13-94	1 OF 2

K:\BONANZA CREEK\2013_94_2014_WELL STAKING\PLATS\NORTH PLATTE F-36\NORTH PLATTE F-36 PLAT.dwg, 1/8/2014 11:43:24 AM, jake



NOTES:

- ▲ INDICATES FOUND SECTION CORNER
- INDICATES CALCULATED CORNER
- DRAWING LATITUDE AND LONGITUDE COORDINATES ARE NAD 83 (CORS 96)(EPOCH:2002)
- ELEVATION BASED ON NAVD88 (GEOID09)
- BASIS OF BEARING DERIVED FROM COLORADO COORDINATE SYSTEM 1983 NORTH ZONE UNLESS OTHERWISE NOTED.
- ALL MEASURED DISTANCES ARE GRID.
COMBINED SCALE FACTOR: .99974441
- OPERATOR: ROB WILSON / PDOP = 1.2
- SURFACE USE OF LOCATION IS RANGELAND.
- SEE ADDENDUM TO WELL LOCATION CERTIFICATE FOR EXISTING IMPROVEMENTS WITHIN 500' OF THE WELL PAD.
- WELL FOOTAGES ARE MEASURED AT RIGHT ANGLES TO THE SECTION LINES.
- THE BOTTOM OF HOLE BEARS S00°45'43"E 9440' FROM THE ENTRY POINT.

NEAREST CULTURAL ITEMS:

BUILDING: ±4157' W
BUILDING UNIT: 5280'+
HIGH OCCUPANCY BUILDING UNIT: 5280'+
DESIGNATED OUTSIDE ACTIVITY AREA: 5280'+
PUBLIC ROAD: 5280'+
ABOVE GROUND UTILITY: ±1296' SW
RAILROAD: 5280'+
PROPERTY LINE: ±330' N

WELL PAD - STATE NORTH PLATTE F-36

STATE NORTH PLATTE 11-36-1XRLNB
WELL LOCATION CERTIFICATE
330' FNL & 520' FWL NWNW (SURFACE)
531' FNL & 150' FWL NWNW (ENTRY POINT)
SECTION 36, T5N, R63W, 6TH P.M.
470' FSL & 660' FWL SWSW (BOTTOM)
SECTION 1, T4N, R63W, 6TH P.M.
WELD COUNTY, COLORADO

 **BONANZA CREEK**
410 17th Street, Suite 1400
Denver, Colorado 80202



CONSULTING, LLC

SHERIDAN OFFICE
2155 North Main Street
Sheridan, Wyoming 82801
Phone 307-674-0609

LOVELAND OFFICE
1635 Foxtrail Drive, Suite 204
Loveland, Colorado 80538
Phone 970-776-4331

DRAFTED BY:	LMO	CHECKED BY:	BJR	SHEET NO:
DATE DRAFTED:	1/7/14	DATE SURVEYED:	12/10/13	2
REVISED:		FILE NAME:	13-94	2 OF 2