

BONANZA CREEK ENERGY INC.

WELD COUNTY, COLORADO

NW NW SEC. 36 T5N R63W 6th P.M.

**STATE NORTH PLATTE 11-36-1XRLNB - Slot PROP HZ STATE
NP 11-36-1XRLNB**

09 January, 2014

Plan: PROPOSAL #1





Project: WELD COUNTY, COLORADO
Site: NW NW SEC. 36 T5N R63W 6th P.M.
Well: STATE NORTH PLATTE 11-36-1XRLNB
Wellbore: ORIGINAL WELLBORE
Design: PROPOSAL #1

ANNOTATIONS

TVD	MD	Inc	Azi	+N/-S	+E/-W	VSect	Dep	Annotation
0.0	0.0	0.00	0.00	0.0	0.0	0.0	0.0	330ft FNL & 520ft FWL of Sec 36
2200.0	2200.0	0.00	0.00	0.0	0.0	0.0	0.0	START NUDGE (2°/100ft BUR)
2697.3	2699.8	10.00	314.77	30.6	-30.9	-29.4	43.5	EOB TO 10° INC
5185.3	5226.2	10.00	314.77	339.5	-342.2	-326.3	482.0	END OF TANGENT
5682.6	5726.0	0.00	0.00	370.1	-373.1	-355.7	525.5	EOD TO VERTICAL
5712.6	5756.0	0.00	0.00	370.1	-373.1	-355.7	525.5	KOP (12°/100ft BUR)
6173.8	6381.0	75.00	179.95	16.2	-372.8	-2.1	879.4	START OF TANGENT
6199.7	6481.0	75.00	179.95	-80.4	-372.7	94.4	976.0	END OF TANGENT
6215.9	6606.0	90.00	179.95	-204.0	-372.6	217.9	1099.6	ENTRY PNT: 531ft FNL & 150ft FWL Sec 36
6215.9	16046.8	90.00	179.96	-9644.7	-364.9	9651.6	10540.3	BHL: 470ft FSL & 660ft FWL Sec 1

LOCAL COORDINATES:

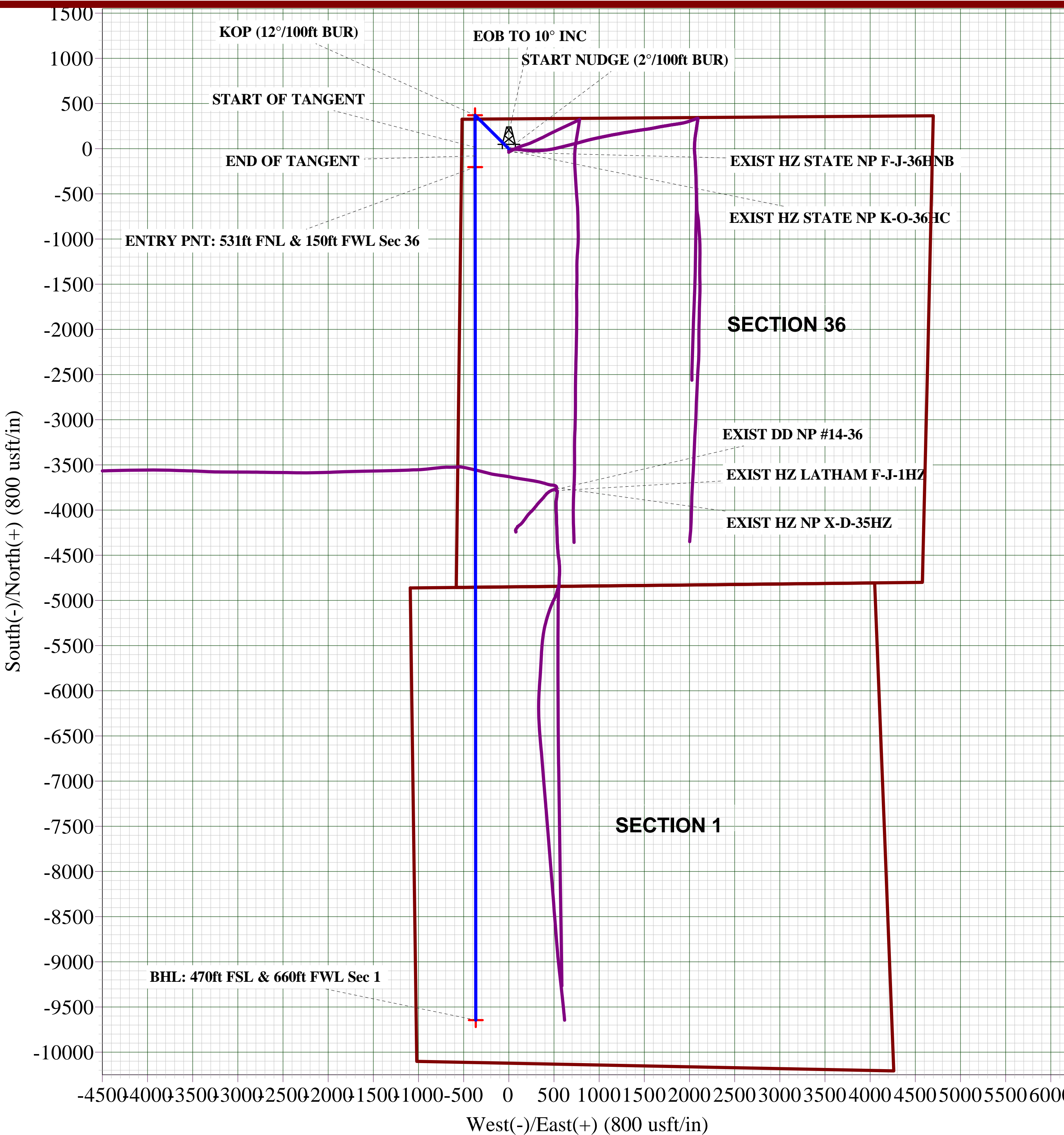
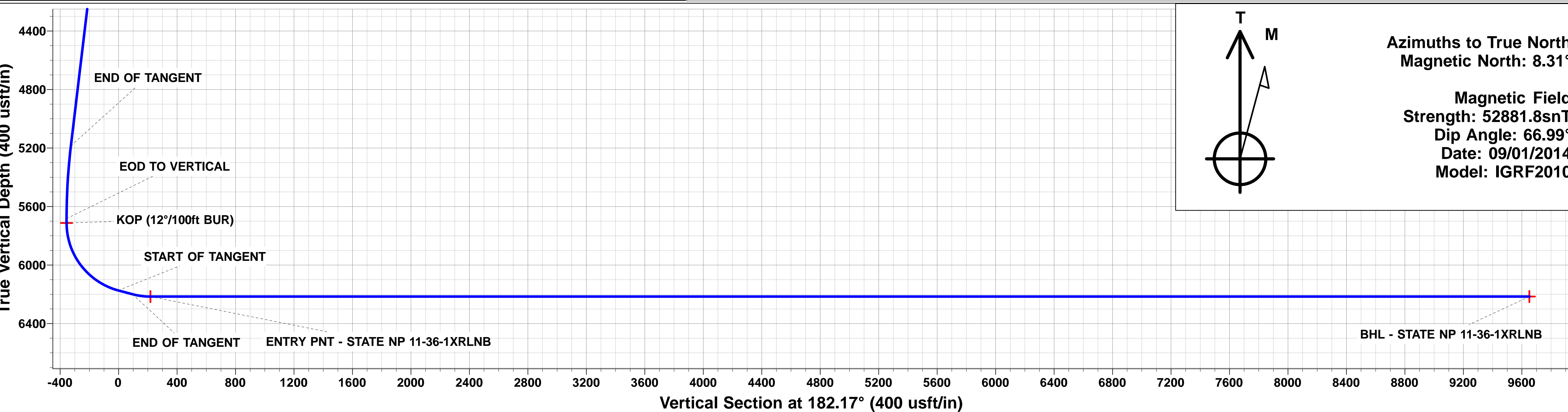
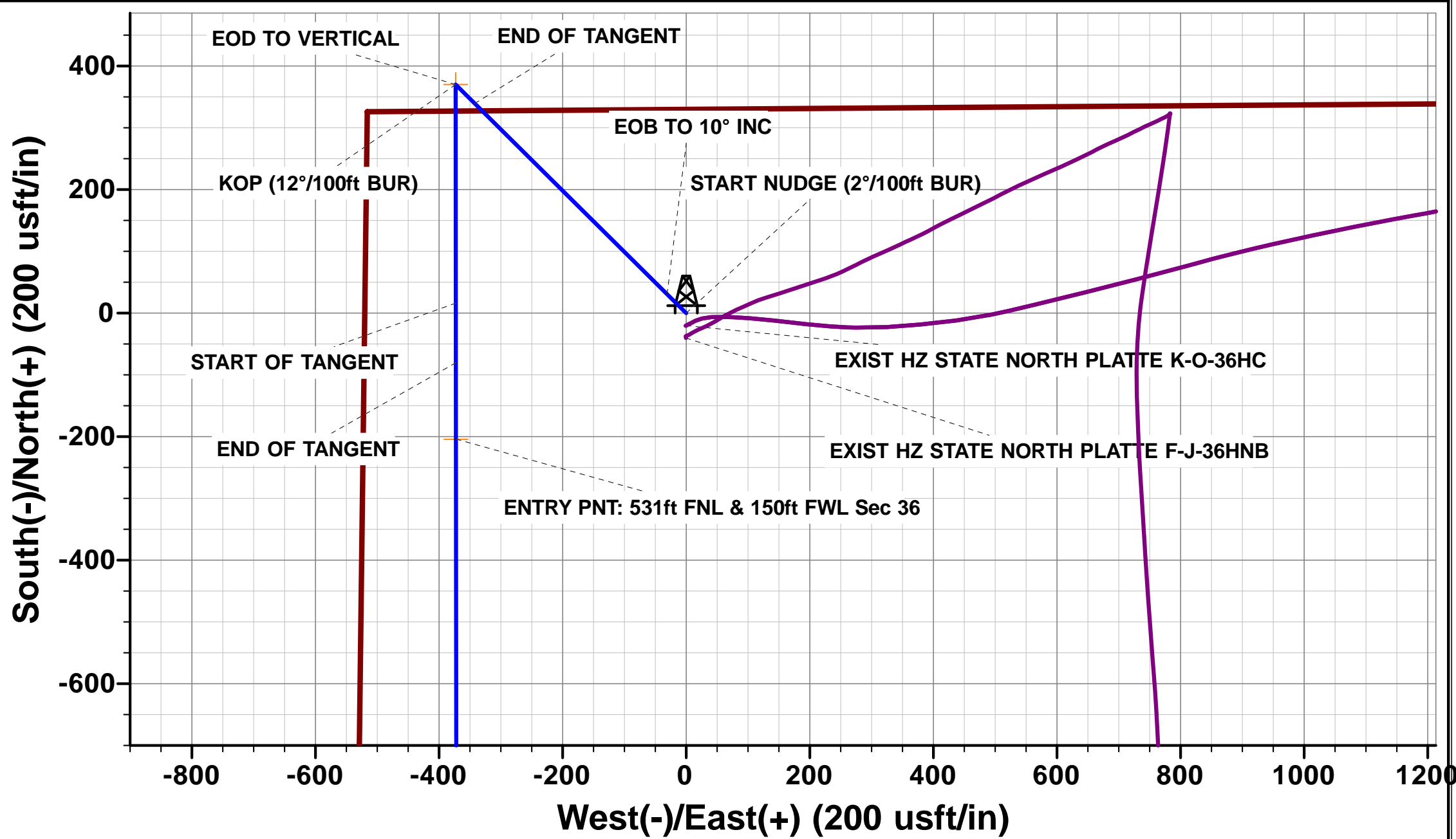
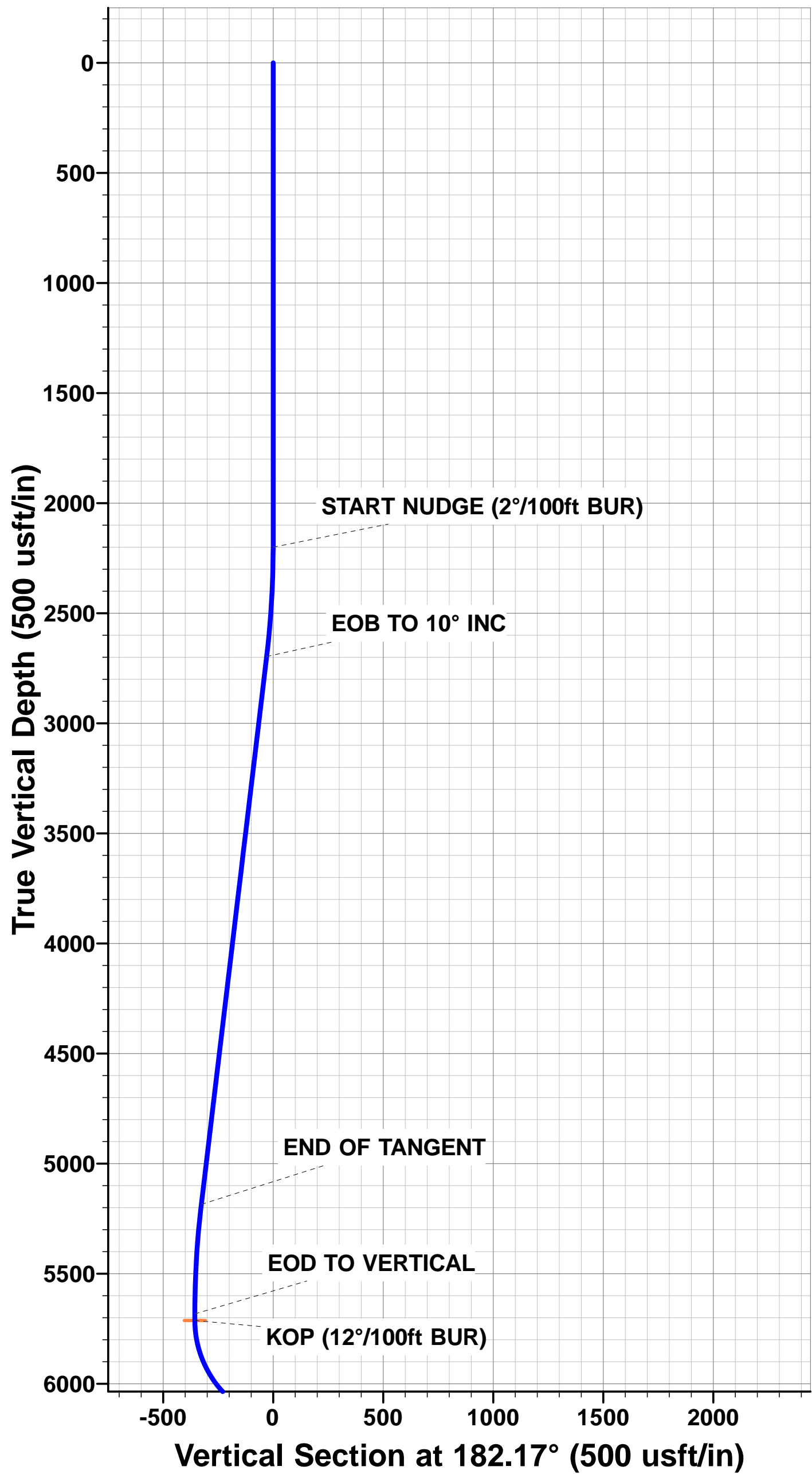
SHL: 330ft FNL & 520ft FWL Sec 36

7" ICP: ft 531ft FNL & 150ft FWL Sec 36

BHL: 470ft FSL & 660ft FWL Sec 1

WELLBORE TARGET DETAILS (LAT/LONG)

Name	TVD	+N/-S	+E/-W	Latitude	Longitude
BTW - STATE NP 11-36-1XRLNB	5712.6	370.1	-373.1	40.363295	-104.393413
BHL - STATE NP 11-36-1XRLNB	6215.9	-9644.7	-364.9	40.335805	-104.393383
ENTRY PNT - STATE NP 11-36-1XRLNB	6215.9	-204.0	-372.6	40.361719	-104.393411



Planning Report



Database:	EDM 5000.1 Single User Db	Local Co-ordinate Reference:	Well STATE NORTH PLATTE 11-36-1XRLNB - Slot PROP HZ STATE NP 11-36-1XRLNB
Company:	BONANZA CREEK ENERGY INC.	TVD Reference:	KB-EST @ 4559.9usft (Original Well Elev)
Project:	WELD COUNTY, COLORADO	MD Reference:	KB-EST @ 4559.9usft (Original Well Elev)
Site:	NW NW SEC. 36 T5N R63W 6th P.M.	North Reference:	True
Well:	STATE NORTH PLATTE 11-36-1XRLNB	Survey Calculation Method:	Minimum Curvature
Wellbore:	ORIGINAL WELLBORE		
Design:	PROPOSAL #1		

Project	WELD COUNTY, COLORADO		
Map System:	US State Plane 1983	System Datum:	Mean Sea Level
Geo Datum:	North American Datum 1983		
Map Zone:	Colorado Northern Zone		Using geodetic scale factor

Site	NW NW SEC. 36 T5N R63W 6th P.M.		
Site Position:		Northing:	1,376,747.52 usft
From:	Lat/Long	Easting:	3,308,732.52 usft
Position Uncertainty:	0.0 usft	Slot Radius:	1.10000ft
		Latitude:	40.362279
		Longitude:	-104.392074
		Grid Convergence:	0.72 °

Well	STATE NORTH PLATTE 11-36-1XRLNB - Slot PROP HZ STATE NP 11-36-1XRLNB		
Well Position	+N/-S	0.0 usft	Northing: 1,376,747.52 usft
	+E/-W	0.0 usft	Easting: 3,308,732.52 usft
Position Uncertainty	0.0 usft	Wellhead Elevation:	usft
		Latitude:	40.362279
		Longitude:	-104.392074
		Ground Level:	4,542.9 usft

Wellbore	ORIGINAL WELLBORE				
Magnetics	Model Name	Sample Date	Declination (°)	Dip Angle (°)	Field Strength (nT)
	IGRF2010	09/01/2014	8.31	66.99	52,882

Design	PROPOSAL #1				
Audit Notes:					
Version:	Phase:	PROTOTYPE	Tie On Depth:	0.0	
Vertical Section:	Depth From (TVD) (usft)	+N/-S (usft)	+E/-W (usft)	Direction (°)	
	0.0	0.0	0.0	182.17	

Plan Sections											
MD (usft)	Inc (°)	Azi (°)	Vertical Depth	SS (usft)	+N/-S (usft)	+E/-W (usft)	Dogleg Rate (°/100usft)	Build Rate (°/100usft)	Turn Rate (°/100usft)	TFO (°)	Target
0.0	0.00	0.00	0.0	-4,559.9	0.0	0.0	0.00	0.00	0.00	0.00	
2,200.0	0.00	0.00	2,200.0	-2,359.9	0.0	0.0	0.00	0.00	0.00	0.00	
2,699.8	10.00	314.77	2,697.3	-1,862.6	30.6	-30.9	2.00	2.00	0.00	314.77	
5,226.2	10.00	314.77	5,185.3	625.4	339.5	-342.2	0.00	0.00	0.00	0.00	
5,726.0	0.00	0.00	5,682.6	1,122.7	370.1	-373.1	2.00	-2.00	0.00	180.00	
5,756.0	0.00	0.00	5,712.6	1,152.7	370.1	-373.1	0.00	0.00	0.00	0.00	BTV - STATE NP 1
6,381.0	75.00	179.95	6,173.8	1,613.9	16.2	-372.8	12.00	12.00	0.00	179.95	
6,481.0	75.00	179.95	6,199.7	1,639.8	-80.4	-372.7	0.00	0.00	0.00	0.00	
6,606.0	90.00	179.95	6,215.9	1,656.0	-204.0	-372.6	12.00	12.00	0.00	0.00	
16,046.8	90.00	179.96	6,215.9	1,656.0	-9,644.7	-364.9	0.00	0.00	0.00	85.31	BHL - STATE NP 1

Planning Report



Database:	EDM 5000.1 Single User Db	Local Co-ordinate Reference:	Well STATE NORTH PLATTE 11-36-1XRLNB - Slot PROP HZ STATE NP 11-36-1XRLNB
Company:	BONANZA CREEK ENERGY INC.	TVD Reference:	KB-EST @ 4559.9usft (Original Well Elev)
Project:	WELD COUNTY, COLORADO	MD Reference:	KB-EST @ 4559.9usft (Original Well Elev)
Site:	NW NW SEC. 36 T5N R63W 6th P.M.	North Reference:	True
Well:	STATE NORTH PLATTE 11-36-1XRLNB	Survey Calculation Method:	Minimum Curvature
Wellbore:	ORIGINAL WELLBORE		
Design:	PROPOSAL #1		

Planned Survey

MD (usft)	Inc (°)	Azi (°)	TVD (usft)	SS (usft)	+N/-S (usft)	+E/-W (usft)	Vertical Section (usft)	Dogleg Rate (°/100usft)	Build Rate (°/100usft)	Turn Rate (°/100usft)
330ft FNL & 520ft FWL of Sec 36										
0.0	0.00	0.00	0.0	4,559.90	0.0	0.0	0.0	0.00	0.00	0.00
100.0	0.00	0.00	100.0	4,459.90	0.0	0.0	0.0	0.00	0.00	0.00
200.0	0.00	0.00	200.0	4,359.90	0.0	0.0	0.0	0.00	0.00	0.00
300.0	0.00	0.00	300.0	4,259.90	0.0	0.0	0.0	0.00	0.00	0.00
400.0	0.00	0.00	400.0	4,159.90	0.0	0.0	0.0	0.00	0.00	0.00
500.0	0.00	0.00	500.0	4,059.90	0.0	0.0	0.0	0.00	0.00	0.00
600.0	0.00	0.00	600.0	3,959.90	0.0	0.0	0.0	0.00	0.00	0.00
700.0	0.00	0.00	700.0	3,859.90	0.0	0.0	0.0	0.00	0.00	0.00
800.0	0.00	0.00	800.0	3,759.90	0.0	0.0	0.0	0.00	0.00	0.00
900.0	0.00	0.00	900.0	3,659.90	0.0	0.0	0.0	0.00	0.00	0.00
1,000.0	0.00	0.00	1,000.0	3,559.90	0.0	0.0	0.0	0.00	0.00	0.00
1,100.0	0.00	0.00	1,100.0	3,459.90	0.0	0.0	0.0	0.00	0.00	0.00
1,200.0	0.00	0.00	1,200.0	3,359.90	0.0	0.0	0.0	0.00	0.00	0.00
1,300.0	0.00	0.00	1,300.0	3,259.90	0.0	0.0	0.0	0.00	0.00	0.00
1,400.0	0.00	0.00	1,400.0	3,159.90	0.0	0.0	0.0	0.00	0.00	0.00
1,500.0	0.00	0.00	1,500.0	3,059.90	0.0	0.0	0.0	0.00	0.00	0.00
1,600.0	0.00	0.00	1,600.0	2,959.90	0.0	0.0	0.0	0.00	0.00	0.00
1,700.0	0.00	0.00	1,700.0	2,859.90	0.0	0.0	0.0	0.00	0.00	0.00
1,800.0	0.00	0.00	1,800.0	2,759.90	0.0	0.0	0.0	0.00	0.00	0.00
1,900.0	0.00	0.00	1,900.0	2,659.90	0.0	0.0	0.0	0.00	0.00	0.00
2,000.0	0.00	0.00	2,000.0	2,559.90	0.0	0.0	0.0	0.00	0.00	0.00
2,100.0	0.00	0.00	2,100.0	2,459.90	0.0	0.0	0.0	0.00	0.00	0.00
START NUDGE (2°/100ft BUR)										
2,200.0	0.00	0.00	2,200.0	2,359.90	0.0	0.0	0.0	0.00	0.00	0.00
2,300.0	2.00	314.77	2,300.0	2,259.92	1.2	-1.2	-1.2	2.00	2.00	0.00
2,400.0	4.00	314.77	2,399.8	2,160.06	4.9	-5.0	-4.7	2.00	2.00	0.00
2,500.0	6.00	314.77	2,499.5	2,060.45	11.1	-11.1	-10.6	2.00	2.00	0.00
2,600.0	8.00	314.77	2,598.7	1,961.20	19.6	-19.8	-18.9	2.00	2.00	0.00
EOB TO 10° INC										
2,699.8	10.00	314.77	2,697.3	1,862.61	30.6	-30.9	-29.4	2.00	2.00	0.00
2,700.0	10.00	314.77	2,697.5	1,862.43	30.7	-30.9	-29.5	0.00	0.00	0.00
2,800.0	10.00	314.77	2,795.9	1,763.95	42.9	-43.2	-41.2	0.00	0.00	0.00
2,900.0	10.00	314.77	2,894.4	1,665.47	55.1	-55.5	-53.0	0.00	0.00	0.00
3,000.0	10.00	314.77	2,992.9	1,566.99	67.3	-67.9	-64.7	0.00	0.00	0.00
3,100.0	10.00	314.77	3,091.4	1,468.51	79.5	-80.2	-76.5	0.00	0.00	0.00
3,200.0	10.00	314.77	3,189.9	1,370.03	91.8	-92.5	-88.2	0.00	0.00	0.00
3,300.0	10.00	314.77	3,288.4	1,271.54	104.0	-104.8	-100.0	0.00	0.00	0.00
3,400.0	10.00	314.77	3,386.8	1,173.06	116.2	-117.2	-111.7	0.00	0.00	0.00
3,500.0	10.00	314.77	3,485.3	1,074.58	128.4	-129.5	-123.5	0.00	0.00	0.00
3,600.0	10.00	314.77	3,583.8	976.10	140.7	-141.8	-135.2	0.00	0.00	0.00
3,700.0	10.00	314.77	3,682.3	877.62	152.9	-154.1	-147.0	0.00	0.00	0.00
3,800.0	10.00	314.77	3,780.8	779.13	165.1	-166.5	-158.7	0.00	0.00	0.00
3,900.0	10.00	314.77	3,879.2	680.65	177.3	-178.8	-170.5	0.00	0.00	0.00
4,000.0	10.00	314.77	3,977.7	582.17	189.6	-191.1	-182.2	0.00	0.00	0.00
4,100.0	10.00	314.77	4,076.2	483.69	201.8	-203.4	-194.0	0.00	0.00	0.00
4,200.0	10.00	314.77	4,174.7	385.21	214.0	-215.8	-205.7	0.00	0.00	0.00
4,300.0	10.00	314.77	4,273.2	286.72	226.2	-228.1	-217.5	0.00	0.00	0.00
4,400.0	10.00	314.77	4,371.7	188.24	238.5	-240.4	-229.2	0.00	0.00	0.00
4,500.0	10.00	314.77	4,470.1	89.76	250.7	-252.7	-241.0	0.00	0.00	0.00
4,600.0	10.00	314.77	4,568.6	-8.72	262.9	-265.1	-252.7	0.00	0.00	0.00
4,700.0	10.00	314.77	4,667.1	-107.20	275.1	-277.4	-264.5	0.00	0.00	0.00
4,800.0	10.00	314.77	4,765.6	-205.68	287.4	-289.7	-276.2	0.00	0.00	0.00

Planning Report



Database:	EDM 5000.1 Single User Db	Local Co-ordinate Reference:	Well STATE NORTH PLATTE 11-36-1XRLNB - Slot PROP HZ STATE NP 11-36-1XRLNB
Company:	BONANZA CREEK ENERGY INC.	TVD Reference:	KB-EST @ 4559.9usft (Original Well Elev)
Project:	WELD COUNTY, COLORADO	MD Reference:	KB-EST @ 4559.9usft (Original Well Elev)
Site:	NW NW SEC. 36 T5N R63W 6th P.M.	North Reference:	True
Well:	STATE NORTH PLATTE 11-36-1XRLNB	Survey Calculation Method:	Minimum Curvature
Wellbore:	ORIGINAL WELLBORE		
Design:	PROPOSAL #1		

Planned Survey

MD (usft)	Inc (°)	Azi (°)	TVD (usft)	SS (usft)	+N/-S (usft)	+E/-W (usft)	Vertical Section (usft)	Dogleg Rate (°/100usft)	Build Rate (°/100usft)	Turn Rate (°/100usft)
4,900.0	10.00	314.77	4,864.1	-304.17	299.6	-302.0	-288.0	0.00	0.00	0.00
5,000.0	10.00	314.77	4,962.5	-402.65	311.8	-314.3	-299.7	0.00	0.00	0.00
5,100.0	10.00	314.77	5,061.0	-501.13	324.0	-326.7	-311.5	0.00	0.00	0.00
5,200.0	10.00	314.77	5,159.5	-599.61	336.3	-339.0	-323.2	0.00	0.00	0.00
END OF TANGENT										
5,226.2	10.00	314.77	5,185.3	-625.41	339.5	-342.2	-326.3	0.00	0.00	0.00
5,300.0	8.52	314.77	5,258.2	-698.25	347.8	-350.7	-334.3	2.00	-2.00	0.00
5,400.0	6.52	314.77	5,357.3	-797.39	357.0	-359.9	-343.2	2.00	-2.00	0.00
5,500.0	4.52	314.77	5,456.8	-896.92	363.8	-366.8	-349.7	2.00	-2.00	0.00
5,600.0	2.52	314.77	5,556.6	-996.72	368.1	-371.1	-353.9	2.00	-2.00	0.00
5,700.0	0.52	314.77	5,656.6	-1,096.68	370.0	-373.0	-355.6	2.00	-2.00	0.00
EOD TO VERTICAL										
5,726.0	0.00	0.00	5,682.6	-1,122.70	370.1	-373.1	-355.7	2.00	-2.00	0.00
KOP (12°/100ft BUR)										
5,756.0	0.00	0.00	5,712.6	-1,152.70	370.1	-373.1	-355.7	0.00	0.00	0.00
5,800.0	5.28	179.95	5,756.5	-1,196.62	368.1	-373.1	-353.7	12.00	12.00	0.00
5,900.0	17.28	179.95	5,854.4	-1,294.51	348.6	-373.1	-334.2	12.00	12.00	0.00
6,000.0	29.28	179.95	5,946.1	-1,386.20	309.1	-373.0	-294.8	12.00	12.00	0.00
6,100.0	41.28	179.95	6,027.6	-1,467.69	251.5	-373.0	-237.2	12.00	12.00	0.00
6,200.0	53.28	179.95	6,095.3	-1,535.41	178.1	-372.9	-163.9	12.00	12.00	0.00
6,300.0	65.28	179.95	6,146.3	-1,586.40	92.3	-372.9	-78.2	12.00	12.00	0.00
START OF TANGENT										
6,381.0	75.00	179.95	6,173.8	-1,613.90	16.2	-372.8	-2.1	12.00	12.00	0.00
6,400.0	75.00	179.95	6,178.7	-1,618.81	-2.1	-372.8	16.2	0.00	0.00	0.00
END OF TANGENT										
6,481.0	75.00	179.95	6,199.7	-1,639.78	-80.4	-372.7	94.4	0.00	0.00	0.00
6,500.0	77.28	179.95	6,204.2	-1,644.32	-98.8	-372.7	112.8	12.00	12.00	0.00
6,600.0	89.28	179.95	6,215.9	-1,656.01	-197.9	-372.6	211.9	12.00	12.00	0.00
ENTRY PNT: 531ft FNL & 150ft FWL Sec 36										
6,606.0	90.00	179.95	6,215.9	-1,656.05	-204.0	-372.6	217.9	12.00	12.00	0.00
6,700.0	90.00	179.95	6,215.9	-1,656.05	-297.9	-372.5	311.8	0.00	0.00	0.00
6,800.0	90.00	179.95	6,215.9	-1,656.05	-397.9	-372.4	411.7	0.00	0.00	0.00
6,900.0	90.00	179.95	6,215.9	-1,656.05	-497.9	-372.3	511.7	0.00	0.00	0.00
7,000.0	90.00	179.95	6,215.9	-1,656.05	-597.9	-372.3	611.6	0.00	0.00	0.00
7,100.0	90.00	179.95	6,215.9	-1,656.05	-697.9	-372.2	711.5	0.00	0.00	0.00
7,200.0	90.00	179.95	6,215.9	-1,656.05	-797.9	-372.1	811.4	0.00	0.00	0.00
7,300.0	90.00	179.95	6,215.9	-1,656.05	-897.9	-372.0	911.4	0.00	0.00	0.00
7,400.0	90.00	179.95	6,215.9	-1,656.05	-997.9	-371.9	1,011.3	0.00	0.00	0.00
7,500.0	90.00	179.95	6,215.9	-1,656.05	-1,097.9	-371.8	1,111.2	0.00	0.00	0.00
7,600.0	90.00	179.95	6,215.9	-1,656.05	-1,197.9	-371.7	1,211.1	0.00	0.00	0.00
7,700.0	90.00	179.95	6,215.9	-1,656.05	-1,297.9	-371.7	1,311.1	0.00	0.00	0.00
7,800.0	90.00	179.95	6,215.9	-1,656.05	-1,397.9	-371.6	1,411.0	0.00	0.00	0.00
7,900.0	90.00	179.95	6,215.9	-1,656.05	-1,497.9	-371.5	1,510.9	0.00	0.00	0.00
8,000.0	90.00	179.95	6,215.9	-1,656.05	-1,597.9	-371.4	1,610.8	0.00	0.00	0.00
8,100.0	90.00	179.95	6,215.9	-1,656.05	-1,697.9	-371.3	1,710.8	0.00	0.00	0.00
8,200.0	90.00	179.95	6,215.9	-1,656.05	-1,797.9	-371.2	1,810.7	0.00	0.00	0.00
8,300.0	90.00	179.95	6,215.9	-1,656.05	-1,897.9	-371.1	1,910.6	0.00	0.00	0.00
8,400.0	90.00	179.95	6,215.9	-1,656.05	-1,997.9	-371.1	2,010.5	0.00	0.00	0.00
8,500.0	90.00	179.95	6,215.9	-1,656.04	-2,097.9	-371.0	2,110.5	0.00	0.00	0.00
8,600.0	90.00	179.95	6,215.9	-1,656.04	-2,197.9	-370.9	2,210.4	0.00	0.00	0.00
8,700.0	90.00	179.95	6,215.9	-1,656.04	-2,297.9	-370.8	2,310.3	0.00	0.00	0.00
8,800.0	90.00	179.95	6,215.9	-1,656.04	-2,397.9	-370.7	2,410.2	0.00	0.00	0.00

Planning Report



Database:	EDM 5000.1 Single User Db	Local Co-ordinate Reference:	Well STATE NORTH PLATTE 11-36-1XRLNB - Slot PROP HZ STATE NP 11-36-1XRLNB
Company:	BONANZA CREEK ENERGY INC.	TVD Reference:	KB-EST @ 4559.9usft (Original Well Elev)
Project:	WELD COUNTY, COLORADO	MD Reference:	KB-EST @ 4559.9usft (Original Well Elev)
Site:	NW NW SEC. 36 T5N R63W 6th P.M.	North Reference:	True
Well:	STATE NORTH PLATTE 11-36-1XRLNB	Survey Calculation Method:	Minimum Curvature
Wellbore:	ORIGINAL WELLBORE		
Design:	PROPOSAL #1		

Planned Survey

MD (usft)	Inc (°)	Azi (°)	TVD (usft)	SS (usft)	+N/-S (usft)	+E/-W (usft)	Vertical Section (usft)	Dogleg Rate (°/100usft)	Build Rate (°/100usft)	Turn Rate (°/100usft)
8,900.0	90.00	179.95	6,215.9	-1,656.04	-2,497.9	-370.6	2,510.2	0.00	0.00	0.00
9,000.0	90.00	179.95	6,215.9	-1,656.04	-2,597.9	-370.5	2,610.1	0.00	0.00	0.00
9,100.0	90.00	179.95	6,215.9	-1,656.04	-2,697.9	-370.5	2,710.0	0.00	0.00	0.00
9,200.0	90.00	179.95	6,215.9	-1,656.04	-2,797.9	-370.4	2,809.9	0.00	0.00	0.00
9,300.0	90.00	179.95	6,215.9	-1,656.04	-2,897.9	-370.3	2,909.9	0.00	0.00	0.00
9,400.0	90.00	179.95	6,215.9	-1,656.04	-2,997.9	-370.2	3,009.8	0.00	0.00	0.00
9,500.0	90.00	179.95	6,215.9	-1,656.04	-3,097.9	-370.1	3,109.7	0.00	0.00	0.00
9,600.0	90.00	179.95	6,215.9	-1,656.04	-3,197.9	-370.0	3,209.6	0.00	0.00	0.00
9,700.0	90.00	179.95	6,215.9	-1,656.04	-3,297.9	-370.0	3,309.6	0.00	0.00	0.00
9,800.0	90.00	179.95	6,215.9	-1,656.04	-3,397.9	-369.9	3,409.5	0.00	0.00	0.00
9,900.0	90.00	179.95	6,215.9	-1,656.04	-3,497.9	-369.8	3,509.4	0.00	0.00	0.00
10,000.0	90.00	179.95	6,215.9	-1,656.04	-3,597.9	-369.7	3,609.3	0.00	0.00	0.00
10,100.0	90.00	179.95	6,215.9	-1,656.04	-3,697.9	-369.6	3,709.3	0.00	0.00	0.00
10,200.0	90.00	179.95	6,215.9	-1,656.04	-3,797.9	-369.5	3,809.2	0.00	0.00	0.00
10,300.0	90.00	179.95	6,215.9	-1,656.04	-3,897.9	-369.5	3,909.1	0.00	0.00	0.00
10,400.0	90.00	179.95	6,215.9	-1,656.04	-3,997.9	-369.4	4,009.0	0.00	0.00	0.00
10,500.0	90.00	179.95	6,215.9	-1,656.04	-4,097.9	-369.3	4,109.0	0.00	0.00	0.00
10,600.0	90.00	179.95	6,215.9	-1,656.04	-4,197.9	-369.2	4,208.9	0.00	0.00	0.00
10,700.0	90.00	179.95	6,215.9	-1,656.04	-4,297.9	-369.1	4,308.8	0.00	0.00	0.00
10,800.0	90.00	179.95	6,215.9	-1,656.04	-4,397.9	-369.1	4,408.7	0.00	0.00	0.00
10,900.0	90.00	179.95	6,215.9	-1,656.04	-4,497.9	-369.0	4,508.7	0.00	0.00	0.00
11,000.0	90.00	179.95	6,215.9	-1,656.04	-4,597.9	-368.9	4,608.6	0.00	0.00	0.00
11,100.0	90.00	179.95	6,215.9	-1,656.04	-4,697.9	-368.8	4,708.5	0.00	0.00	0.00
11,200.0	90.00	179.95	6,215.9	-1,656.04	-4,797.9	-368.7	4,808.4	0.00	0.00	0.00
11,300.0	90.00	179.95	6,215.9	-1,656.04	-4,897.9	-368.6	4,908.4	0.00	0.00	0.00
11,400.0	90.00	179.95	6,215.9	-1,656.03	-4,997.9	-368.6	5,008.3	0.00	0.00	0.00
11,500.0	90.00	179.95	6,215.9	-1,656.03	-5,097.9	-368.5	5,108.2	0.00	0.00	0.00
11,600.0	90.00	179.95	6,215.9	-1,656.03	-5,197.9	-368.4	5,208.2	0.00	0.00	0.00
11,700.0	90.00	179.95	6,215.9	-1,656.03	-5,297.9	-368.3	5,308.1	0.00	0.00	0.00
11,800.0	90.00	179.95	6,215.9	-1,656.03	-5,397.9	-368.2	5,408.0	0.00	0.00	0.00
11,900.0	90.00	179.95	6,215.9	-1,656.03	-5,497.9	-368.2	5,507.9	0.00	0.00	0.00
12,000.0	90.00	179.95	6,215.9	-1,656.03	-5,597.9	-368.1	5,607.9	0.00	0.00	0.00
12,100.0	90.00	179.95	6,215.9	-1,656.03	-5,697.9	-368.0	5,707.8	0.00	0.00	0.00
12,200.0	90.00	179.95	6,215.9	-1,656.03	-5,797.9	-367.9	5,807.7	0.00	0.00	0.00
12,300.0	90.00	179.95	6,215.9	-1,656.03	-5,897.9	-367.8	5,907.6	0.00	0.00	0.00
12,400.0	90.00	179.95	6,215.9	-1,656.03	-5,997.9	-367.8	6,007.6	0.00	0.00	0.00
12,500.0	90.00	179.95	6,215.9	-1,656.03	-6,097.9	-367.7	6,107.5	0.00	0.00	0.00
12,600.0	90.00	179.95	6,215.9	-1,656.03	-6,197.9	-367.6	6,207.4	0.00	0.00	0.00
12,700.0	90.00	179.95	6,215.9	-1,656.03	-6,297.9	-367.5	6,307.3	0.00	0.00	0.00
12,800.0	90.00	179.95	6,215.9	-1,656.03	-6,397.9	-367.4	6,407.3	0.00	0.00	0.00
12,900.0	90.00	179.95	6,215.9	-1,656.03	-6,497.9	-367.4	6,507.2	0.00	0.00	0.00
13,000.0	90.00	179.95	6,215.9	-1,656.03	-6,597.9	-367.3	6,607.1	0.00	0.00	0.00
13,100.0	90.00	179.95	6,215.9	-1,656.02	-6,697.9	-367.2	6,707.0	0.00	0.00	0.00
13,200.0	90.00	179.95	6,215.9	-1,656.02	-6,797.9	-367.1	6,807.0	0.00	0.00	0.00
13,300.0	90.00	179.95	6,215.9	-1,656.02	-6,897.9	-367.0	6,906.9	0.00	0.00	0.00
13,400.0	90.00	179.95	6,215.9	-1,656.02	-6,997.9	-367.0	7,006.8	0.00	0.00	0.00
13,500.0	90.00	179.96	6,215.9	-1,656.02	-7,097.9	-366.9	7,106.7	0.00	0.00	0.00
13,600.0	90.00	179.96	6,215.9	-1,656.02	-7,197.9	-366.8	7,206.7	0.00	0.00	0.00
13,700.0	90.00	179.96	6,215.9	-1,656.02	-7,297.9	-366.7	7,306.6	0.00	0.00	0.00
13,800.0	90.00	179.96	6,215.9	-1,656.02	-7,397.9	-366.7	7,406.5	0.00	0.00	0.00
13,900.0	90.00	179.96	6,215.9	-1,656.02	-7,497.9	-366.6	7,506.4	0.00	0.00	0.00
14,000.0	90.00	179.96	6,215.9	-1,656.02	-7,597.9	-366.5	7,606.4	0.00	0.00	0.00
14,100.0	90.00	179.96	6,215.9	-1,656.02	-7,697.9	-366.4	7,706.3	0.00	0.00	0.00

Planning Report



Database:	EDM 5000.1 Single User Db	Local Co-ordinate Reference:	Well STATE NORTH PLATTE 11-36-1XRLNB - Slot PROP HZ STATE NP 11-36-1XRLNB
Company:	BONANZA CREEK ENERGY INC.	TVD Reference:	KB-EST @ 4559.9usft (Original Well Elev)
Project:	WELD COUNTY, COLORADO	MD Reference:	KB-EST @ 4559.9usft (Original Well Elev)
Site:	NW NW SEC. 36 T5N R63W 6th P.M.	North Reference:	True
Well:	STATE NORTH PLATTE 11-36-1XRLNB	Survey Calculation Method:	Minimum Curvature
Wellbore:	ORIGINAL WELLBORE		
Design:	PROPOSAL #1		

Planned Survey

MD (usft)	Inc (°)	Azi (°)	TVD (usft)	SS (usft)	+N-S (usft)	+E-W (usft)	Vertical Section (usft)	Dogleg Rate (°/100usft)	Build Rate (°/100usft)	Turn Rate (°/100usft)
14,200.0	90.00	179.96	6,215.9	-1,656.02	-7,797.9	-366.3	7,806.2	0.00	0.00	0.00
14,300.0	90.00	179.96	6,215.9	-1,656.02	-7,897.9	-366.3	7,906.1	0.00	0.00	0.00
14,400.0	90.00	179.96	6,215.9	-1,656.01	-7,997.9	-366.2	8,006.1	0.00	0.00	0.00
14,500.0	90.00	179.96	6,215.9	-1,656.01	-8,097.9	-366.1	8,106.0	0.00	0.00	0.00
14,600.0	90.00	179.96	6,215.9	-1,656.01	-8,197.9	-366.0	8,205.9	0.00	0.00	0.00
14,700.0	90.00	179.96	6,215.9	-1,656.01	-8,297.9	-366.0	8,305.8	0.00	0.00	0.00
14,800.0	90.00	179.96	6,215.9	-1,656.01	-8,397.9	-365.9	8,405.8	0.00	0.00	0.00
14,900.0	90.00	179.96	6,215.9	-1,656.01	-8,497.9	-365.8	8,505.7	0.00	0.00	0.00
15,000.0	90.00	179.96	6,215.9	-1,656.01	-8,597.9	-365.7	8,605.6	0.00	0.00	0.00
15,100.0	90.00	179.96	6,215.9	-1,656.01	-8,697.9	-365.6	8,705.5	0.00	0.00	0.00
15,200.0	90.00	179.96	6,215.9	-1,656.01	-8,797.9	-365.6	8,805.5	0.00	0.00	0.00
15,300.0	90.00	179.96	6,215.9	-1,656.01	-8,897.9	-365.5	8,905.4	0.00	0.00	0.00
15,400.0	90.00	179.96	6,215.9	-1,656.01	-8,997.9	-365.4	9,005.3	0.00	0.00	0.00
15,500.0	90.00	179.96	6,215.9	-1,656.01	-9,097.9	-365.3	9,105.2	0.00	0.00	0.00
15,600.0	90.00	179.96	6,215.9	-1,656.00	-9,197.9	-365.3	9,205.2	0.00	0.00	0.00
15,700.0	90.00	179.96	6,215.9	-1,656.00	-9,297.9	-365.2	9,305.1	0.00	0.00	0.00
15,800.0	90.00	179.96	6,215.9	-1,656.00	-9,397.9	-365.1	9,405.0	0.00	0.00	0.00
15,900.0	90.00	179.96	6,215.9	-1,656.00	-9,497.9	-365.0	9,504.9	0.00	0.00	0.00
16,000.0	90.00	179.96	6,215.9	-1,656.00	-9,597.9	-365.0	9,604.9	0.00	0.00	0.00
BHL: 470ft FSL & 660ft FWL Sec 1										
16,046.8	90.00	179.96	6,215.9	-1,656.00	-9,644.7	-364.9	9,651.6	0.00	0.00	0.00

Plan Annotations

MD (usft)	TVD (usft)	Local Coordinates		Comment
		+N-S (usft)	+E-W (usft)	
0.0	0.0	0.0	0.0	330ft FNL & 520ft FWL of Sec 36
2,200.0	2,200.0	0.0	0.0	START NUDGE (2°/100ft BUR)
2,699.8	2,697.3	30.6	-30.9	EOB TO 10° INC
5,226.2	5,185.3	339.5	-342.2	END OF TANGENT
5,726.0	5,682.6	370.1	-373.1	EOD TO VERTICAL
5,756.0	5,712.6	370.1	-373.1	KOP (12°/100ft BUR)
6,381.0	6,173.8	16.2	-372.8	START OF TANGENT
6,481.0	6,199.7	-80.4	-372.7	END OF TANGENT
6,606.0	6,215.9	-204.0	-372.6	ENTRY PNT: 531ft FNL & 150ft FWL Sec 36
16,046.8	6,215.9	-9,644.7	-364.9	BHL: 470ft FSL & 660ft FWL Sec 1