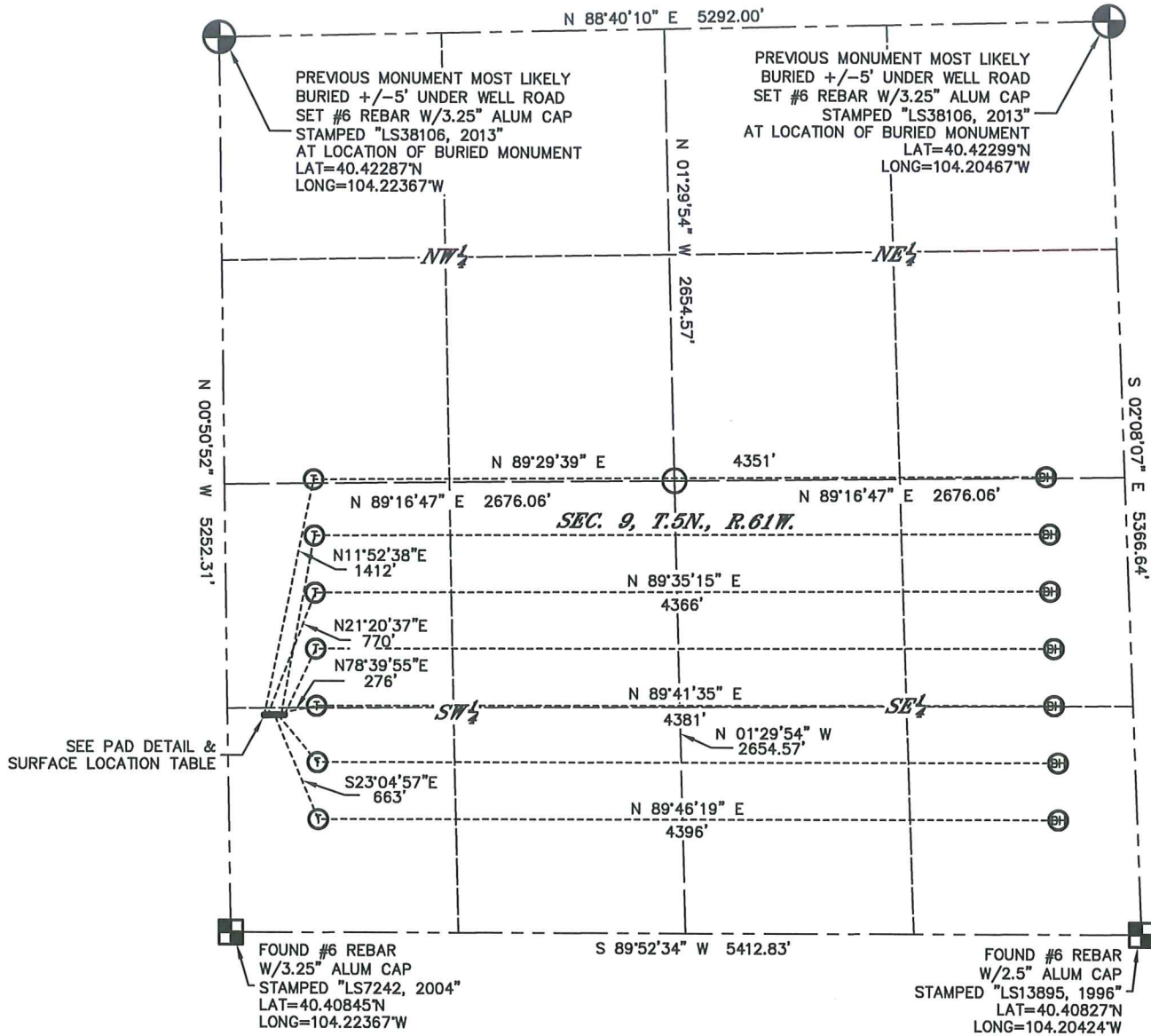


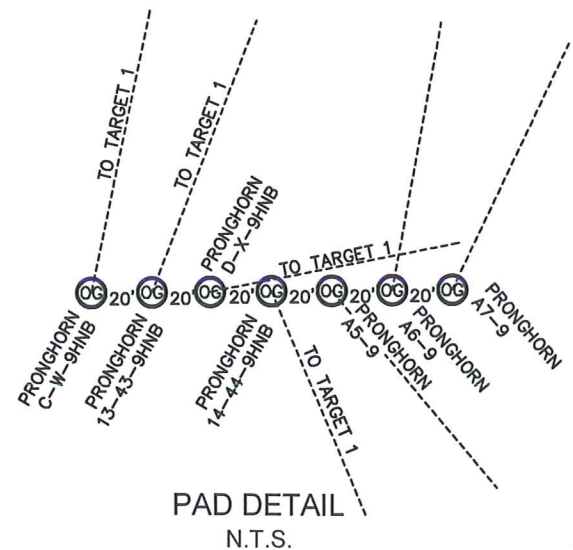
MULTI-WELL PLAN (1 of 2)

PRONGHORN D-9 PAD

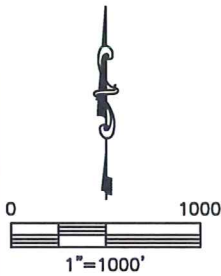
SECTION: 9  
TOWNSHIP: 5N  
RANGE: 61W



SEE PAD DETAIL & SURFACE LOCATION TABLE



PAD DETAIL  
N.T.S.



MULTI-WELL PLAN (2 of 2)

PRONGHORN D-9 PAD

SECTION: 9  
TOWNSHIP: 5N  
RANGE: 61W

SURFACE LOCATIONS

(WEST TO EAST)

PRONGHORN C-W-9HNB  
1273' FSL  
220' FWL  
LAT=40.41194°N  
LONG=104.22288°W

PRONGHORN 13-43-9HNB  
1273' FSL  
240' FWL  
LAT=40.41194°N  
LONG=104.22281°W

PRONGHORN D-X-9HNB  
1273' FSL  
260' FWL  
LAT=40.41194°N  
LONG=104.22273°W

PRONGHORN 14-44-9HNB  
1274' FSL  
280' FWL  
LAT=40.41194°N  
LONG=104.22266°W

PRONGHORN A5-9  
1274' FSL  
300' FWL  
LAT=40.41194°N  
LONG=104.22259°W

PRONGHORN A6-9  
1274' FSL  
320' FWL  
LAT=40.41194°N  
LONG=104.22252°W

PRONGHORN A7-9  
1274' FSL  
340' FWL  
LAT=40.41194°N  
LONG=104.22245°W

TARGET 1 LOCATIONS

(NORTH TO SOUTH)

PRONGHORN C-W-9HNB  
2654' FSL  
531' FWL  
LAT=40.41572°N  
LONG=104.22176°W

PRONGHORN 13-43-9HNB  
1990' FSL  
531' FWL  
LAT=40.41390°N  
LONG=104.22176°W

PRONGHORN D-X-9HNB  
1327' FSL  
531' FWL  
LAT=40.41208°N  
LONG=104.22176°W

PRONGHORN 14-44-9HNB  
663' FSL  
531' FWL  
LAT=40.41025°N  
LONG=104.22176°W

BOTTOM HOLE LOCATIONS

(NORTH TO SOUTH)

PRONGHORN C-W-9HNB  
2683' FSL  
470' FEL  
LAT=40.41565°N  
LONG=104.20614°W

PRONGHORN 13-43-9HNB  
2012' FSL  
470' FEL  
LAT=40.41381°N  
LONG=104.20609°W

PRONGHORN D-X-9HNB  
1341' FSL  
470' FEL  
LAT=40.41197°N  
LONG=104.20603°W

PRONGHORN 14-44-9HNB  
671' FSL  
470' FEL  
LAT=40.41013°N  
LONG=104.20598°W