

Location:	COLORADO	Slot:	SLOT#02 PRONGHORN 13-43-9HNB (1273'FSL & 240'FWL,SEC.9)
Field:	WELD COUNTY	Well:	PRONGHORN 13-43-9HNB
Facility:	SEC.09-T5N-R61W	Wellbore:	PRONGHORN 13-43-9HNB PWB

Location:	COLORADO	Slot:	SLOT#02 PRONGHORN 13-43-9HNB (1273'FSL & 240'FWL,SEC.9)
Field:	WELD COUNTY	Well:	PRONGHORN 13-43-9HNB
Facility:	SEC.09-T5N-R61W	Wellbore:	PRONGHORN 13-43-9HNB PWB

Plot reference wellpath is PRONGHORN 13-43-9HNB (REV-A.0) PWP

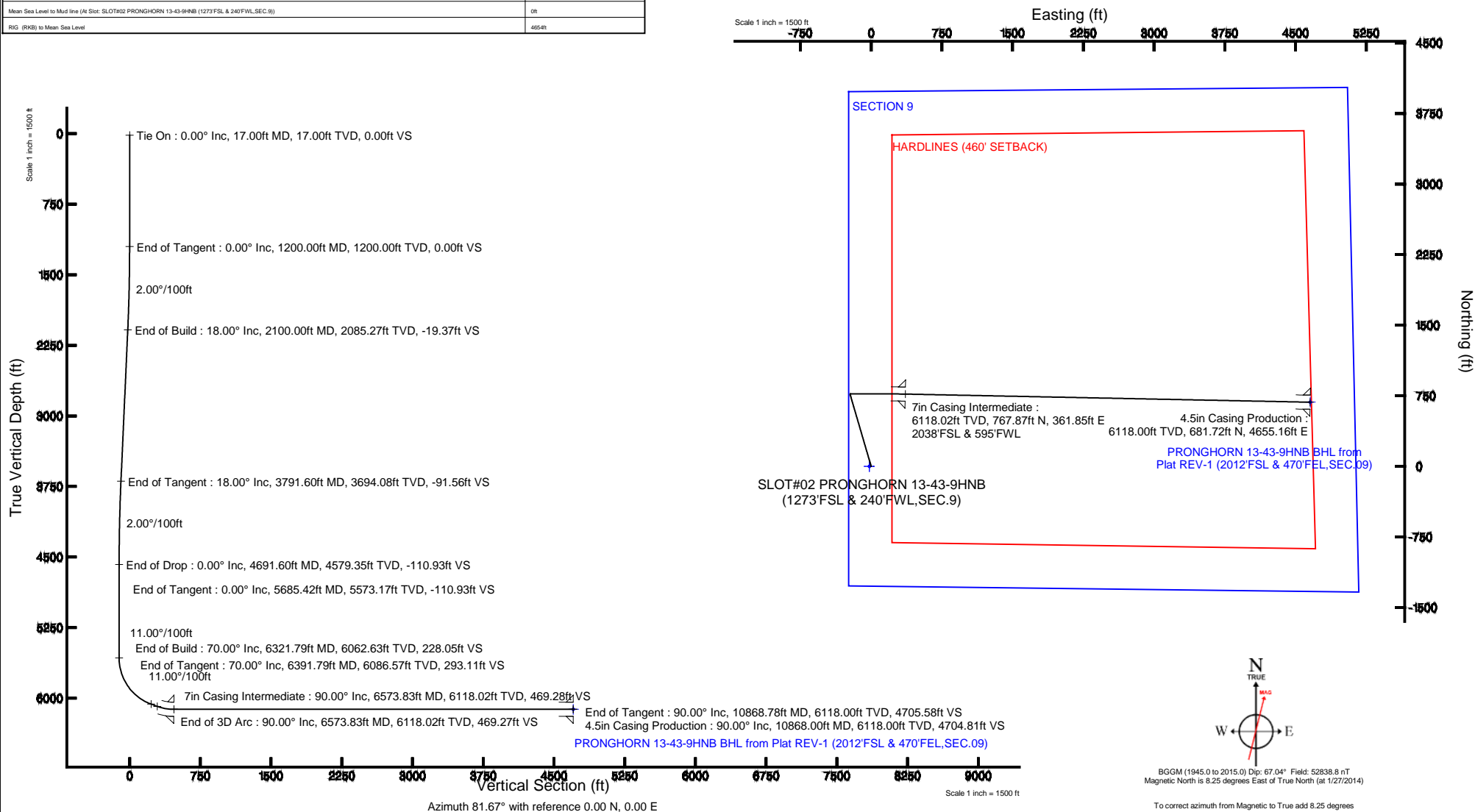
True vertical depths are referenced to RIG (RKB)	Grid System: NAD83 / Lambert Colorado SP, Northern Zone [501], US feet
Measured depths are referenced to RIG (RKB)	North Reference: True north
RIG (RKB) to Mean Sea Level: 4654 feet	Scale: True distance
Mean Sea Level to Mud line (At Slot: SLOT#02 PRONGHORN 13-43-9#NB (1273FSL & 240FVL;SEC.3)) 0 feet	Depths are in feet
Coordinates are in feet referenced to Slot	Created by: quaraner on 1/27/2014

Facility Name			Grid East (US ft)	Grid North (US ft)	Latitude	Longitude
SEC.09-TSN-R61W			3355616.206	1385470.987	40°24'42.984"N	104°13'22.368"W
Slot	Local N (ft)	Local E (ft)	Grid East (US ft)	Grid North (US ft)	Latitude	Longitude
SLOT#02 PRONGHORN 13-43-9#NB (1273FSL & 240FWL SEC.9)	0.00	19.49	3355635.696	1385471.268	40°24'42.984"N	104°13'22.116"W
RIG (R0K) to Mud line (At Slot: SLOT#02 PRONGHORN 13-43-9#NB (1273FSL & 240FWL SEC.9))					465-ft	
Mean Sea Level to Mud line (At Slot: SLOT#02 PRONGHORN 13-43-9#NB (1273FSL & 240FWL SEC.9))					0ft	
RIG (R0K) to Mean Sea Level					465-ft	

Design Comment	MD (ft)	Inc (°)	Az (°)	TVD (ft)	Local N (ft)	Local E (ft)	DLS (°/100ft)	VS (ft)
Tie On	17.00	0.000	343.731	17.00	0.00	0.00	0.00	0.00
End of Tangent	1200.00	0.000	343.731	1200.00	0.00	0.00	0.00	0.00
End of Build	2100.00	18.000	343.731	2085.27	134.60	-39.28	2.00	-19.37
End of Tangent	3791.60	18.000	343.731	3694.08	636.40	-185.72	0.00	-91.56
End of Drop	4691.60	0.000	90.149	4579.35	771.00	-225.00	2.00	-110.93
End of Tangent	5685.42	0.000	90.149	5573.17	771.00	-225.00	0.00	-110.93
End of Build	6321.79	70.000	90.149	6062.63	770.11	117.72	11.00	228.05
End of Tangent	6391.79	70.000	90.149	6086.57	769.94	183.50	0.00	293.11
End of 3D Arc	6573.83	90.000	91.150	6118.02	767.87	361.85	11.00	469.27
End of Tangent	10868.78	90.000	91.150	6118.00	681.70	4655.94	0.00	4705.58

Start MD (ft)	End MD (ft)	Tool	Model	Log Name/Comment	Wellbore
17.00	10868.78	NaviTrak	NaviTrak (MagCorr)		PRONGHORN 13-43-9HNB PWB

MD (ft)	Inc (°)	Az (°)	TVD (ft)	Local N (ft)	Local E (ft)	Grid East (US ft)	Grid North (US ft)	Latitude	Longitude
10868.78	90.000	91.150	6118.00	681.70	4655.04	3360281.14	1366219.93	40°24'40.716"N	104°12'21.924"W





Planned Wellpath Report

PRONGHORN 13-43-9HNB (REV-A.0) PWP

Page 1 of 7



REFERENCE WELLPATH IDENTIFICATION

Operator	BONANZA CREEK OIL COMPANY	Slot	SLOT#02 PRONGHORN 13-43-9HNB (1273'FSL & 240'FWL,SEC.9)
Area	COLORADO	Well	PRONGHORN 13-43-9HNB
Field	WELD COUNTY	Wellbore	PRONGHORN 13-43-9HNB PWB
Facility	SEC.09-T5N-R61W		

REPORT SETUP INFORMATION

Projection System	NAD83 / Lambert Colorado SP, Northern Zone (501), US feet	Software System	WellArchitect® 4.0.0
North Reference	True	User	Guenaler
Scale	0.999961	Report Generated	1/27/2014 at 5:42:40 PM
Convergence at slot	n/a	Database/Source file	WA_Denver/PRONGHORN_13-43-9HNB_PWB.xml

WELLPATH LOCATION

	Local coordinates		Grid coordinates		Geographic coordinates	
	North[ft]	East[ft]	Easting[US ft]	Northing[US ft]	Latitude	Longitude
Slot Location	0.00	19.49	3355635.70	1395471.27	40°24'42.984"N	104°13'22.116"W
Facility Reference Pt			3355616.21	1395470.99	40°24'42.984"N	104°13'22.368"W
Field Reference Pt			3327718.19	1377782.99	40°21'52.020"N	104°19'26.040"W

WELLPATH DATUM

Calculation method	Minimum curvature	RIG (RKB) to Facility Vertical Datum	4654.00ft
Horizontal Reference Pt	Slot	RIG (RKB) to Mean Sea Level	4654.00ft
Vertical Reference Pt	RIG (RKB)	RIG (RKB) to Mud Line at Slot (SLOT#02 PRONGHORN 13-43-9HNB (1273'FSL & 240'FWL,SEC.9))	4654.00ft
MD Reference Pt	RIG (RKB)	Section Origin	N 0.00, E 0.00 ft
Field Vertical Reference	Mean Sea Level	Section Azimuth	81.67°



Planned Wellpath Report

PRONGHORN 13-43-9HNB (REV-A.0) PWP

Page 2 of 7



REFERENCE WELLPATH IDENTIFICATION			
Operator	BONANZA CREEK OIL COMPANY	Slot	SLOT#02 PRONGHORN 13-43-9HNB (1273'FSL & 240'FWL,SEC.9)
Area	COLORADO	Well	PRONGHORN 13-43-9HNB
Field	WELD COUNTY	Wellbore	PRONGHORN 13-43-9HNB PWB
Facility	SEC.09-T5N-R61W		

WELLPATH DATA (119 stations) † = interpolated/extrapolated station										
MD [ft]	Inclination [°]	Azimuth [°]	TVD [ft]	Vert Sect [ft]	North [ft]	East [ft]	Latitude	Longitude	DLS [°/100ft]	Comments
0.00†	0.000	343.731	0.00	0.00	0.00	0.00	40°24'42.984"N	104°13'22.116"W	0.00	
17.00	0.000	343.731	17.00	0.00	0.00	0.00	40°24'42.984"N	104°13'22.116"W	0.00	Tie On
117.00†	0.000	343.731	117.00	0.00	0.00	0.00	40°24'42.984"N	104°13'22.116"W	0.00	
217.00†	0.000	343.731	217.00	0.00	0.00	0.00	40°24'42.984"N	104°13'22.116"W	0.00	
317.00†	0.000	343.731	317.00	0.00	0.00	0.00	40°24'42.984"N	104°13'22.116"W	0.00	
417.00†	0.000	343.731	417.00	0.00	0.00	0.00	40°24'42.984"N	104°13'22.116"W	0.00	
517.00†	0.000	343.731	517.00	0.00	0.00	0.00	40°24'42.984"N	104°13'22.116"W	0.00	
617.00†	0.000	343.731	617.00	0.00	0.00	0.00	40°24'42.984"N	104°13'22.116"W	0.00	
717.00†	0.000	343.731	717.00	0.00	0.00	0.00	40°24'42.984"N	104°13'22.116"W	0.00	
817.00†	0.000	343.731	817.00	0.00	0.00	0.00	40°24'42.984"N	104°13'22.116"W	0.00	
917.00†	0.000	343.731	917.00	0.00	0.00	0.00	40°24'42.984"N	104°13'22.116"W	0.00	
1017.00†	0.000	343.731	1017.00	0.00	0.00	0.00	40°24'42.984"N	104°13'22.116"W	0.00	
1117.00†	0.000	343.731	1117.00	0.00	0.00	0.00	40°24'42.984"N	104°13'22.116"W	0.00	
1200.00	0.000	343.731	1200.00	0.00	0.00	0.00	40°24'42.984"N	104°13'22.116"W	0.00	End of Tangent
1217.00†	0.340	343.731	1217.00	-0.01	0.05	-0.01	40°24'42.984"N	104°13'22.116"W	2.00	
1317.00†	2.340	343.731	1316.97	-0.33	2.29	-0.67	40°24'43.007"N	104°13'22.125"W	2.00	
1417.00†	4.340	343.731	1416.79	-1.13	7.89	-2.30	40°24'43.062"N	104°13'22.146"W	2.00	
1517.00†	6.340	343.731	1516.35	-2.42	16.82	-4.91	40°24'43.150"N	104°13'22.179"W	2.00	
1617.00†	8.340	343.731	1615.53	-4.18	29.08	-8.49	40°24'43.271"N	104°13'22.226"W	2.00	
1717.00†	10.340	343.731	1714.20	-6.43	44.66	-13.03	40°24'43.425"N	104°13'22.284"W	2.00	
1817.00†	12.340	343.731	1812.24	-9.14	63.54	-18.54	40°24'43.612"N	104°13'22.356"W	2.00	
1917.00†	14.340	343.731	1909.54	-12.33	85.68	-25.01	40°24'43.831"N	104°13'22.439"W	2.00	
2017.00†	16.340	343.731	2005.97	-15.98	111.08	-32.42	40°24'44.082"N	104°13'22.535"W	2.00	
2100.00	18.000	343.731	2085.27	-19.37	134.60	-39.28	40°24'44.314"N	104°13'22.624"W	2.00	End of Build
2117.00†	18.000	343.731	2101.44	-20.09	139.64	-40.75	40°24'44.364"N	104°13'22.643"W	0.00	
2217.00†	18.000	343.731	2196.54	-24.36	169.31	-49.41	40°24'44.657"N	104°13'22.755"W	0.00	
2317.00†	18.000	343.731	2291.65	-28.63	198.97	-58.07	40°24'44.950"N	104°13'22.867"W	0.00	
2417.00†	18.000	343.731	2386.75	-32.90	228.63	-66.72	40°24'45.243"N	104°13'22.979"W	0.00	
2517.00†	18.000	343.731	2481.86	-37.16	258.30	-75.38	40°24'45.536"N	104°13'23.090"W	0.00	
2617.00†	18.000	343.731	2576.96	-41.43	287.96	-84.04	40°24'45.830"N	104°13'23.202"W	0.00	



Planned Wellpath Report

PRONGHORN 13-43-9HNB (REV-A.0) PWP

Page 3 of 7



REFERENCE WELLPATH IDENTIFICATION

Operator	BONANZA CREEK OIL COMPANY	Slot	SLOT#02 PRONGHORN 13-43-9HNB (1273'FSL & 240'FWL,SEC.9)
Area	COLORADO	Well	PRONGHORN 13-43-9HNB
Field	WELD COUNTY	Wellbore	PRONGHORN 13-43-9HNB PWB
Facility	SEC.09-T5N-R61W		

WELLPATH DATA (119 stations) † = interpolated/extrapolated station

MD [ft]	Inclination [°]	Azimuth [°]	TVD [ft]	Vert Sect [ft]	North [ft]	East [ft]	Latitude	Longitude	DLS [°/100ft]	Comments
2717.00†	18.000	343.731	2672.07	-45.70	317.63	-92.69	40°24'46.123"N	104°13'23.314"W	0.00	
2817.00†	18.000	343.731	2767.18	-49.97	347.29	-101.35	40°24'46.416"N	104°13'23.426"W	0.00	
2917.00†	18.000	343.731	2862.28	-54.24	376.96	-110.01	40°24'46.709"N	104°13'23.538"W	0.00	
3017.00†	18.000	343.731	2957.39	-58.50	406.62	-118.66	40°24'47.002"N	104°13'23.650"W	0.00	
3117.00†	18.000	343.731	3052.49	-62.77	436.28	-127.32	40°24'47.295"N	104°13'23.762"W	0.00	
3217.00†	18.000	343.731	3147.60	-67.04	465.95	-135.98	40°24'47.588"N	104°13'23.874"W	0.00	
3317.00†	18.000	343.731	3242.70	-71.31	495.61	-144.63	40°24'47.881"N	104°13'23.986"W	0.00	
3417.00†	18.000	343.731	3337.81	-75.58	525.28	-153.29	40°24'48.175"N	104°13'24.098"W	0.00	
3517.00†	18.000	343.731	3432.92	-79.84	554.94	-161.95	40°24'48.468"N	104°13'24.210"W	0.00	
3617.00†	18.000	343.731	3528.02	-84.11	584.61	-170.60	40°24'48.761"N	104°13'24.322"W	0.00	
3717.00†	18.000	343.731	3623.13	-88.38	614.27	-179.26	40°24'49.054"N	104°13'24.433"W	0.00	
3791.60	18.000	343.731	3694.08	-91.56	636.40	-185.72	40°24'49.273"N	104°13'24.517"W	0.00	End of Tangent
3817.00†	17.492	343.731	3718.27	-92.63	643.83	-187.89	40°24'49.346"N	104°13'24.545"W	2.00	
3917.00†	15.492	343.731	3814.15	-96.55	671.08	-195.84	40°24'49.615"N	104°13'24.648"W	2.00	
4017.00†	13.492	343.731	3910.96	-100.01	695.10	-202.85	40°24'49.853"N	104°13'24.738"W	2.00	
4117.00†	11.492	343.731	4008.59	-103.00	715.87	-208.91	40°24'50.058"N	104°13'24.817"W	2.00	
4217.00†	9.492	343.731	4106.91	-105.51	733.35	-214.01	40°24'50.231"N	104°13'24.883"W	2.00	
4317.00†	7.492	343.731	4205.81	-107.55	747.52	-218.15	40°24'50.371"N	104°13'24.936"W	2.00	
4417.00†	5.492	343.731	4305.16	-109.11	758.38	-221.32	40°24'50.478"N	104°13'24.977"W	2.00	
4517.00†	3.492	343.731	4404.85	-110.20	765.89	-223.51	40°24'50.552"N	104°13'25.006"W	2.00	
4617.00†	1.492	343.731	4504.75	-110.80	770.07	-224.73	40°24'50.594"N	104°13'25.021"W	2.00	
4691.60	0.000	90.149	4579.35	-110.93	771.00	-225.00	40°24'50.603"N	104°13'25.025"W	2.00	End of Drop
4717.00†	0.000	90.149	4604.74	-110.93	771.00	-225.00	40°24'50.603"N	104°13'25.025"W	0.00	
4817.00†	0.000	90.149	4704.74	-110.93	771.00	-225.00	40°24'50.603"N	104°13'25.025"W	0.00	
4917.00†	0.000	90.149	4804.74	-110.93	771.00	-225.00	40°24'50.603"N	104°13'25.025"W	0.00	
5017.00†	0.000	90.149	4904.74	-110.93	771.00	-225.00	40°24'50.603"N	104°13'25.025"W	0.00	
5117.00†	0.000	90.149	5004.74	-110.93	771.00	-225.00	40°24'50.603"N	104°13'25.025"W	0.00	
5217.00†	0.000	90.149	5104.74	-110.93	771.00	-225.00	40°24'50.603"N	104°13'25.025"W	0.00	
5317.00†	0.000	90.149	5204.74	-110.93	771.00	-225.00	40°24'50.603"N	104°13'25.025"W	0.00	
5417.00†	0.000	90.149	5304.74	-110.93	771.00	-225.00	40°24'50.603"N	104°13'25.025"W	0.00	



Planned Wellpath Report

PRONGHORN 13-43-9HNB (REV-A.0) PWP

Page 4 of 7



REFERENCE WELLPATH IDENTIFICATION

Operator	BONANZA CREEK OIL COMPANY	Slot	SLOT#02 PRONGHORN 13-43-9HNB (1273'FSL & 240'FWL,SEC.9)
Area	COLORADO	Well	PRONGHORN 13-43-9HNB
Field	WELD COUNTY	Wellbore	PRONGHORN 13-43-9HNB PWB
Facility	SEC.09-T5N-R61W		

WELLPATH DATA (119 stations) † = interpolated/extrapolated station

MD [ft]	Inclination [°]	Azimuth [°]	TVD [ft]	Vert Sect [ft]	North [ft]	East [ft]	Latitude	Longitude	DLS [°/100ft]	Comments
5517.00†	0.000	90.149	5404.74	-110.93	771.00	-225.00	40°24'50.603"N	104°13'25.025"W	0.00	
5617.00†	0.000	90.149	5504.74	-110.93	771.00	-225.00	40°24'50.603"N	104°13'25.025"W	0.00	
5685.42	0.000	90.149	5573.17	-110.93	771.00	-225.00	40°24'50.603"N	104°13'25.025"W	0.00	End of Tangent
5717.00†	3.473	90.149	5604.72	-109.98	771.00	-224.04	40°24'50.603"N	104°13'25.012"W	11.00	
5817.00†	14.473	90.149	5703.35	-94.58	770.96	-208.47	40°24'50.602"N	104°13'24.811"W	11.00	
5917.00†	25.473	90.149	5797.19	-60.85	770.87	-174.36	40°24'50.601"N	104°13'24.370"W	11.00	
6017.00†	36.473	90.149	5882.80	-10.02	770.73	-122.98	40°24'50.600"N	104°13'23.706"W	11.00	
6117.00†	47.473	90.149	5957.03	56.02	770.56	-56.20	40°24'50.598"N	104°13'22.843"W	11.00	
6217.00†	58.473	90.149	6017.16	134.86	770.35	23.51	40°24'50.596"N	104°13'21.812"W	11.00	
6317.00†	69.473	90.149	6060.97	223.60	770.12	113.23	40°24'50.594"N	104°13'20.652"W	11.00	
6321.79	70.000	90.149	6062.63	228.05	770.11	117.72	40°24'50.594"N	104°13'20.594"W	11.00	End of Build
6391.79	70.000	90.149	6086.57	293.11	769.94	183.50	40°24'50.592"N	104°13'19.744"W	0.00	End of Tangent
6417.00†	72.770	90.297	6094.62	316.73	769.84	207.39	40°24'50.591"N	104°13'19.435"W	11.00	
6517.00†	83.757	90.849	6114.93	413.31	768.86	305.14	40°24'50.582"N	104°13'18.171"W	11.00	
6573.83	90.000	91.150	6118.02	469.27	767.87	361.85	40°24'50.572"N	104°13'17.438"W	11.00	End of 3D Arc
6617.00†	90.000	91.150	6118.02	511.86	767.00	405.01	40°24'50.563"N	104°13'16.880"W	0.00	
6717.00†	90.000	91.150	6118.02	610.49	765.00	504.99	40°24'50.543"N	104°13'15.587"W	0.00	
6817.00†	90.000	91.150	6118.02	709.13	762.99	604.97	40°24'50.523"N	104°13'14.295"W	0.00	
6917.00†	90.000	91.150	6118.02	807.76	760.98	704.95	40°24'50.504"N	104°13'13.002"W	0.00	
7017.00†	90.000	91.150	6118.02	906.40	758.98	804.93	40°24'50.484"N	104°13'11.710"W	0.00	
7117.00†	90.000	91.150	6118.02	1005.03	756.97	904.91	40°24'50.464"N	104°13'10.417"W	0.00	
7217.00†	90.000	91.150	6118.02	1103.67	754.96	1004.89	40°24'50.444"N	104°13'09.125"W	0.00	
7317.00†	90.000	91.150	6118.02	1202.30	752.96	1104.87	40°24'50.424"N	104°13'07.832"W	0.00	
7417.00†	90.000	91.150	6118.02	1300.93	750.95	1204.85	40°24'50.404"N	104°13'06.540"W	0.00	
7517.00†	90.000	91.150	6118.01	1399.57	748.95	1304.83	40°24'50.384"N	104°13'05.247"W	0.00	
7617.00†	90.000	91.150	6118.01	1498.20	746.94	1404.81	40°24'50.365"N	104°13'03.955"W	0.00	
7717.00†	90.000	91.150	6118.01	1596.84	744.93	1504.79	40°24'50.345"N	104°13'02.662"W	0.00	
7817.00†	90.000	91.150	6118.01	1695.47	742.93	1604.77	40°24'50.325"N	104°13'01.369"W	0.00	
7917.00†	90.000	91.150	6118.01	1794.11	740.92	1704.75	40°24'50.305"N	104°13'00.077"W	0.00	
8017.00†	90.000	91.150	6118.01	1892.74	738.92	1804.73	40°24'50.285"N	104°12'58.784"W	0.00	



Planned Wellpath Report

PRONGHORN 13-43-9HNB (REV-A.0) PWP

Page 5 of 7



REFERENCE WELLPATH IDENTIFICATION

Operator	BONANZA CREEK OIL COMPANY	Slot	SLOT#02 PRONGHORN 13-43-9HNB (1273'FSL & 240'FWL,SEC.9)
Area	COLORADO	Well	PRONGHORN 13-43-9HNB
Field	WELD COUNTY	Wellbore	PRONGHORN 13-43-9HNB PWB
Facility	SEC.09-T5N-R61W		

WELLPATH DATA (119 stations) † = interpolated/extrapolated station

MD [ft]	Inclination [°]	Azimuth [°]	TVD [ft]	Vert Sect [ft]	North [ft]	East [ft]	Latitude	Longitude	DLS [°/100ft]	Comments
8117.00†	90.000	91.150	6118.01	1991.38	736.91	1904.71	40°24'50.265"N	104°12'57.492"W	0.00	
8217.00†	90.000	91.150	6118.01	2090.01	734.90	2004.69	40°24'50.245"N	104°12'56.199"W	0.00	
8317.00†	90.000	91.150	6118.01	2188.64	732.90	2104.67	40°24'50.225"N	104°12'54.907"W	0.00	
8417.00†	90.000	91.150	6118.01	2287.28	730.89	2204.65	40°24'50.205"N	104°12'53.614"W	0.00	
8517.00†	90.000	91.150	6118.01	2385.91	728.88	2304.63	40°24'50.185"N	104°12'52.322"W	0.00	
8617.00†	90.000	91.150	6118.01	2484.55	726.88	2404.61	40°24'50.166"N	104°12'51.029"W	0.00	
8717.00†	90.000	91.150	6118.01	2583.18	724.87	2504.59	40°24'50.146"N	104°12'49.737"W	0.00	
8817.00†	90.000	91.150	6118.01	2681.82	722.87	2604.57	40°24'50.126"N	104°12'48.444"W	0.00	
8917.00†	90.000	91.150	6118.01	2780.45	720.86	2704.55	40°24'50.106"N	104°12'47.151"W	0.00	
9017.00†	90.000	91.150	6118.01	2879.09	718.85	2804.53	40°24'50.086"N	104°12'45.859"W	0.00	
9117.00†	90.000	91.150	6118.01	2977.72	716.85	2904.51	40°24'50.066"N	104°12'44.566"W	0.00	
9217.00†	90.000	91.150	6118.01	3076.36	714.84	3004.49	40°24'50.046"N	104°12'43.274"W	0.00	
9317.00†	90.000	91.150	6118.01	3174.99	712.84	3104.47	40°24'50.026"N	104°12'41.981"W	0.00	
9417.00†	90.000	91.150	6118.01	3273.62	710.83	3204.45	40°24'50.006"N	104°12'40.689"W	0.00	
9517.00†	90.000	91.150	6118.01	3372.26	708.82	3304.43	40°24'49.986"N	104°12'39.396"W	0.00	
9617.00†	90.000	91.150	6118.01	3470.89	706.82	3404.41	40°24'49.966"N	104°12'38.104"W	0.00	
9717.00†	90.000	91.150	6118.01	3569.53	704.81	3504.39	40°24'49.946"N	104°12'36.811"W	0.00	
9817.00†	90.000	91.150	6118.00	3668.16	702.80	3604.37	40°24'49.926"N	104°12'35.519"W	0.00	
9917.00†	90.000	91.150	6118.00	3766.80	700.80	3704.35	40°24'49.906"N	104°12'34.226"W	0.00	
10017.00†	90.000	91.150	6118.00	3865.43	698.79	3804.33	40°24'49.886"N	104°12'32.934"W	0.00	
10117.00†	90.000	91.150	6118.00	3964.07	696.79	3904.31	40°24'49.866"N	104°12'31.641"W	0.00	
10217.00†	90.000	91.150	6118.00	4062.70	694.78	4004.29	40°24'49.846"N	104°12'30.348"W	0.00	
10317.00†	90.000	91.150	6118.00	4161.33	692.77	4104.27	40°24'49.826"N	104°12'29.056"W	0.00	
10417.00†	90.000	91.150	6118.00	4259.97	690.77	4204.25	40°24'49.806"N	104°12'27.763"W	0.00	
10517.00†	90.000	91.150	6118.00	4358.60	688.76	4304.23	40°24'49.786"N	104°12'26.471"W	0.00	
10617.00†	90.000	91.150	6118.00	4457.24	686.76	4404.21	40°24'49.766"N	104°12'25.178"W	0.00	
10717.00†	90.000	91.150	6118.00	4555.87	684.75	4504.19	40°24'49.746"N	104°12'23.886"W	0.00	
10817.00†	90.000	91.150	6118.00	4654.51	682.74	4604.17	40°24'49.726"N	104°12'22.593"W	0.00	
10868.78	90.000	91.150	6118.00 ¹	4705.58	681.70	4655.94	40°24'49.716"N	104°12'21.924"W	0.00	End of Tangent



Planned Wellpath Report

PRONGHORN 13-43-9HNB (REV-A.0) PWP

Page 6 of 7



REFERENCE WELLPATH IDENTIFICATION			
Operator	BONANZA CREEK OIL COMPANY	Slot	SLOT#02 PRONGHORN 13-43-9HNB (1273'FSL & 240'FWL,SEC.9)
Area	COLORADO	Well	PRONGHORN 13-43-9HNB
Field	WELD COUNTY	Wellbore	PRONGHORN 13-43-9HNB PWB
Facility	SEC.09-T5N-R61W		

HOLE & CASING SECTIONS - Ref Wellbore: PRONGHORN 13-43-9HNB PWB Ref Wellpath: PRONGHORN 13-43-9HNB (REV-A.0) PWP									
String/Diameter	Start MD [ft]	End MD [ft]	Interval [ft]	Start TVD [ft]	End TVD [ft]	Start N/S [ft]	Start E/W [ft]	End N/S [ft]	End E/W [ft]
7in Casing Intermediate	17.00	6573.83	6556.83	17.00	6118.02	0.00	0.00	767.87	361.85
4.5in Casing Production	17.00	10868.00	10851.00	17.00	6118.00	0.00	0.00	681.72	4655.16

TARGETS									
Name	MD [ft]	TVD [ft]	North [ft]	East [ft]	Grid East [US ft]	Grid North [US ft]	Latitude	Longitude	Shape
PRONGHORN C-W-9HNB SECTION 9		0.00	0.00	-19.49	3355616.21	1395470.99	40°24'42.984"N	104°13'22.368"W	polygon
1) PRONGHORN 13-43-9HNB BHL from Plat REV-1 (2012'FSL & 470'FEL,SEC.09)	10868.78	6118.00	681.70	4655.94	3360281.14	1396219.93	40°24'49.716"N	104°12'21.924"W	point
PRONGHORN C-W-9HNB HARDLINES (460' SETBACK)		6118.00	0.00	-19.49	3355616.21	1395470.99	40°24'42.984"N	104°13'22.368"W	polygon

SURVEY PROGRAM - Ref Wellbore: PRONGHORN 13-43-9HNB PWB Ref Wellpath: PRONGHORN 13-43-9HNB (REV-A.0) PWP				
Start MD [ft]	End MD [ft]	Positional Uncertainty Model	Log Name/Comment	Wellbore
17.00	10868.78	NaviTrak (MagCorr)		PRONGHORN 13-43-9HNB PWB



Planned Wellpath Report
PRONGHORN 13-43-9HNB (REV-A.0) PWP
Page 7 of 7



REFERENCE WELLPATH IDENTIFICATION			
Operator	BONANZA CREEK OIL COMPANY	Slot	SLOT#02 PRONGHORN 13-43-9HNB (1273'FSL & 240'FWL,SEC.9)
Area	COLORADO	Well	PRONGHORN 13-43-9HNB
Field	WELD COUNTY	Wellbore	PRONGHORN 13-43-9HNB PWB
Facility	SEC.09-T5N-R61W		

DESIGN COMMENTS				
MD [ft]	Inclination [°]	Azimuth [°]	TVD [ft]	Comment
17.00	0.000	343.731	17.00	Tie On
1200.00	0.000	343.731	1200.00	End of Tangent
2100.00	18.000	343.731	2085.27	End of Build
3791.60	18.000	343.731	3694.08	End of Tangent
4691.60	0.000	90.149	4579.35	End of Drop
5685.42	0.000	90.149	5573.17	End of Tangent
6321.79	70.000	90.149	6062.63	End of Build
6391.79	70.000	90.149	6086.57	End of Tangent
6573.83	90.000	91.150	6118.02	End of 3D Arc
10868.78	90.000	91.150	6118.00	End of Tangent