



# Kerr-McGee Oil & Gas Onshore LP

A subsidiary of Anadarko Petroleum Corporation

1099 18<sup>th</sup> Street  
Denver, CO 80202  
720-929-6000

February 10, 2014

Department of Natural Resources  
Oil and Gas Conservation Commission  
The Chancery Building  
1120 Lincoln St., Suite 801  
Denver, CO 80203

Re: **30 Day Certification Letter - 318A.e**

NRC 4C-32HZ

Township 1 North, Range 67 West, Section 8: NW/4NW/4

Unit Spacing: 01N-67W-5 W/2

01N-67W-8 N/2NW/4

02N-67W-29 S/2SW/4

02N-67W-32 W/2

Weld County, Colorado

Ladies/Gentlemen:

Kerr-McGee Oil and Gas Onshore LP ("KMG") hereby certifies to the Director that a thirty (30) day notice has been given by certified mail to all owners in the proposed wellbore spacing unit. We have not received any objections to such well location, proposed spacing unit, or additional producing formation. KMG hereby requests the Director to approve the boundary well.

If you have any questions or issues regarding this permit, please contact Cheryl Light at (720) 929-6461.

Very truly yours,

**Kerr-McGee Oil and Gas Onshore LP**

A handwritten signature in blue ink that reads 'RPowers'.

**Ronett Powers**  
**Regulatory Analyst II**

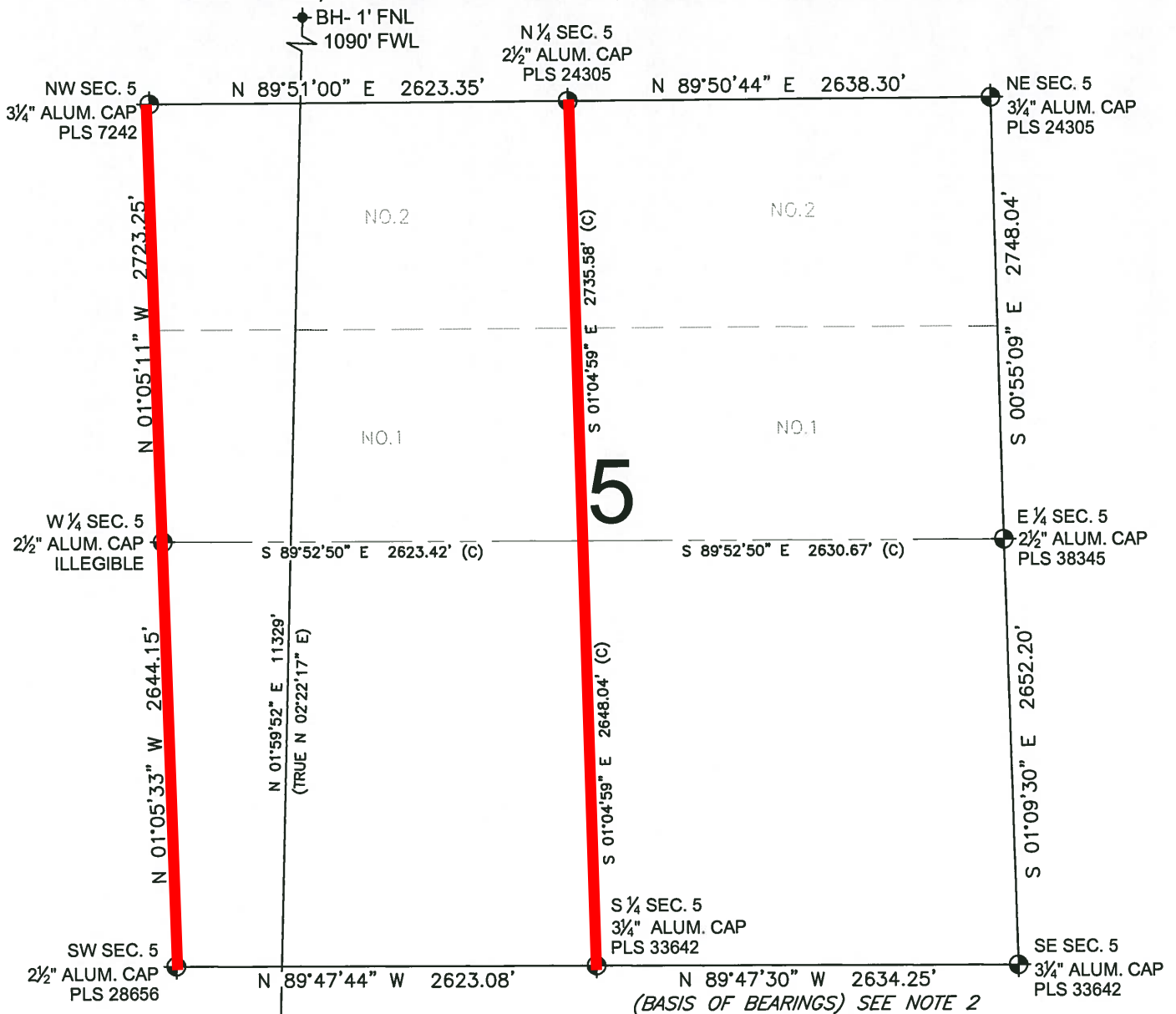
Enclosure



# PROPOSED SPACING UNIT

## WELL LOCATION CERTIFICATE: NRC 4C-32HZ

SECTION 5, TOWNSHIP 1 NORTH, RANGE 67 WEST, 6TH P.M.



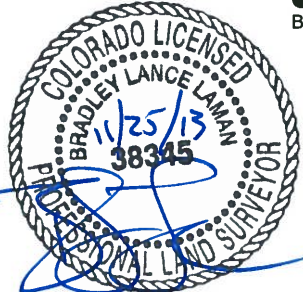
NRC  
4C-32HZ

### LEGEND

- ⊕ = EXISTING MONUMENT
- = PROPOSED WELL
- BH = BOTTOM HOLE
- ⬥ = BOTTOM HOLE
- ◆ = EXISTING WELL

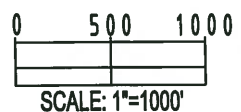
### NOTES:

1. THIS FIELD SURVEY CONFORMS TO THE MINIMUM STANDARDS SET BY THE C.O.G.C.C., RULE NO. 215
2. BEARINGS AND DISTANCE SHOWN HEREON ARE GRID AND BASED ON THE COLORADO STATE PLANE COORDINATE SYSTEM, NAD 83/2011 BETWEEN MONUMENTS AS LABELED HEREON AND ELEVATIONS SHOWN ARE NAVD 88, AS DERIVED BY GPS OBSERVATIONS.
3. GRID DISTANCES ARE SHOWN, AS MEASURED IN THE FIELD, WITH TIES TO WELLS MEASURED PERPENDICULAR TO SECTION LINES.



BRADLEY L. LAMAN, PLS 38345  
COLORADO LICENSED PROFESSIONAL LAND SURVEYOR  
FOR AND ON BEHALF OF P.F.S., LLC

SHEET 2 OF 3

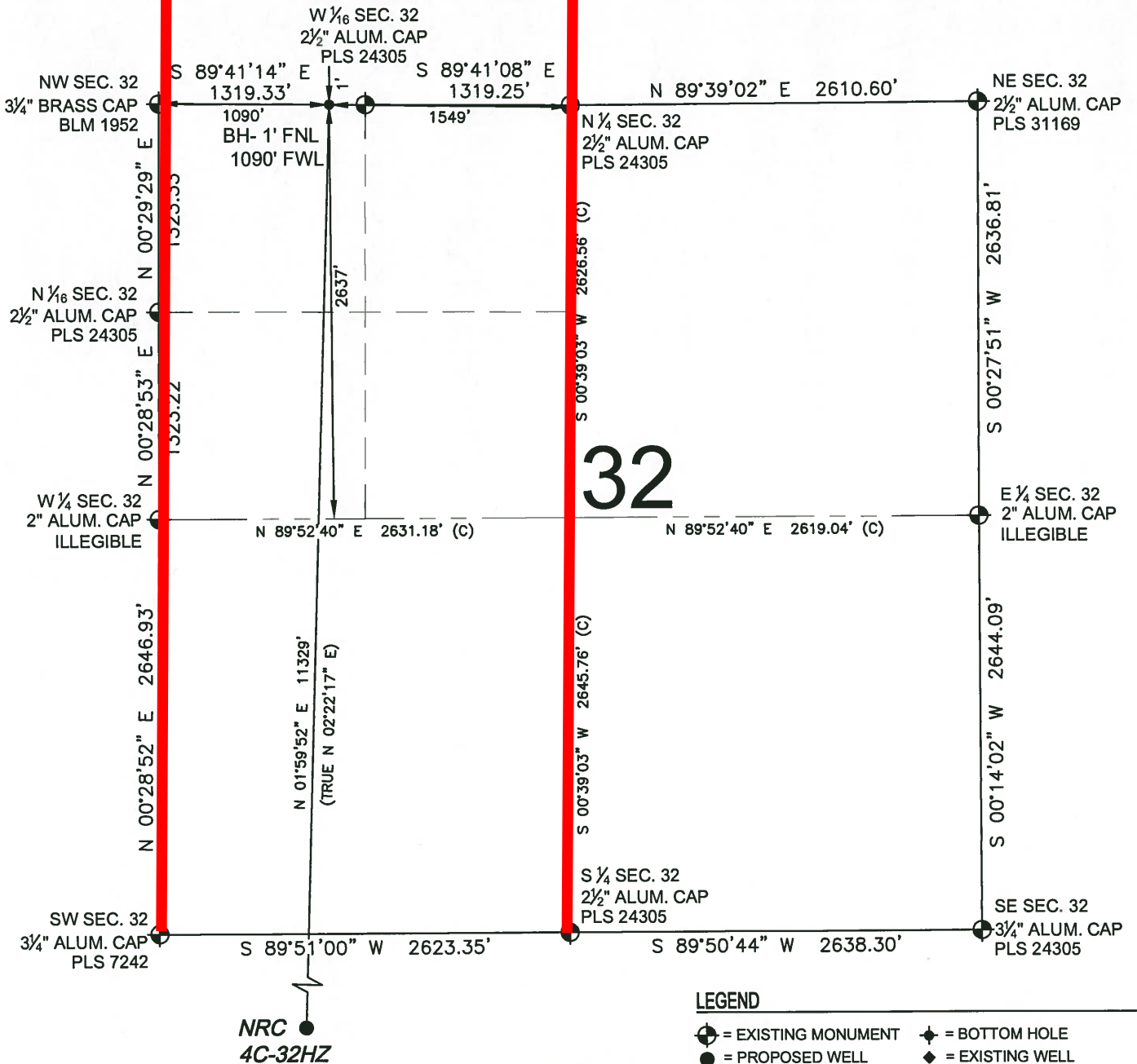


|   |                                  |  |
|---|----------------------------------|--|
| <b>PREPARED BY:</b><br><br>Petroleum Field Services, LLC<br>1801 W. 13th Ave.<br>Denver, CO 80204 | <b>FIELD DATE:</b><br>10-30-13   | <b>SURFACE LOCATION:</b><br>NW 1/4, NW 1/4,<br>SEC. 8, T1N, R67W, 6TH P.M. |
|   | <b>DRAWING DATE:</b><br>11-07-13 | WELD COUNTY, COLORADO  |
| <b>BY:</b><br>SMF   | <b>CHECKED:</b><br>JAH           |  |

NOTICE: ACCORDING TO COLORADO LAW YOU MUST COMMENCE ANY LEGAL ACTION BASED UPON ANY DEFECT IN THIS SURVEY WITHIN THREE YEARS AFTER YOU FIRST DISCOVER SUCH DEFECT. IN NO EVENT MAY ANY ACTION BASED UPON ANY DEFECT IN THIS SURVEY BE COMMENCED MORE THAN TEN YEARS FROM THIS SAID DATE OF THIS CERTIFICATION SHOWN HEREON.

# WELL LOCATION CERTIFICATE: NRC 4C-32HZ

SECTION 32, TOWNSHIP 2 NORTH, RANGE 67 WEST, 6TH P.M.

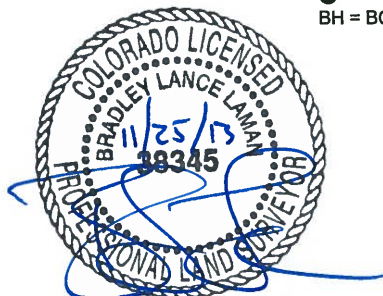


## LEGEND

- = EXISTING MONUMENT
- = PROPOSED WELL
- BH = BOTTOM HOLE
- ◆ = BOTTOM HOLE
- ◆ = EXISTING WELL

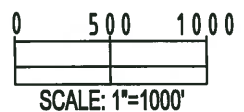
## NOTES:


- THIS FIELD SURVEY CONFORMS TO THE MINIMUM STANDARDS SET BY THE C.O.G.C.C., RULE NO. 215
- BEARINGS AND DISTANCE SHOWN HEREON ARE GRID AND BASED ON THE COLORADO STATE PLANE COORDINATE SYSTEM, NAD 83/2011 BETWEEN MONUMENTS AS LABELED HEREON AND ELEVATIONS SHOWN ARE NAVD 88, AS DERIVED BY GPS OBSERVATIONS.
- GRID DISTANCES ARE SHOWN, AS MEASURED IN THE FIELD, WITH TIES TO WELLS MEASURED PERPENDICULAR TO SECTION LINES.



BRADLEY L. LAMAN, PLS 38345  
COLORADO LICENSED PROFESSIONAL LAND SURVEYOR  
FOR AND ON BEHALF OF P.F.S., LLC

SHEET 3 OF 3



|   |  |  |
|---|--|--|
| <div>PREPARED BY:</div> <div><div>PFS<br/>Petroleum Field Services, LLC<br/>1801 W. 13th Ave.<br/>Denver, CO 80204</div></div> | <div>FIELD DATE:</div> <div>10-30-13</div>   | <div>SURFACE LOCATION:</div> <div>NW 1/4, NW 1/4,<br/>SEC. 8, T1N, R67W, 6TH P.M.<br/><br/>WELD COUNTY, COLORADO</div> |
|   | <div>DRAWING DATE:</div> <div>11-07-13</div> |  |
| <div>BY:</div> <div>SMF</div>   | <div>CHECKED:</div> <div>JAH</div>           |  |

NOTICE: ACCORDING TO COLORADO LAW YOU MUST COMMENCE ANY LEGAL ACTION BASED UPON ANY DEFECT IN THIS SURVEY WITHIN THREE YEARS AFTER YOU FIRST DISCOVER SUCH DEFECT. IN NO EVENT MAY ANY ACTION BASED UPON ANY DEFECT IN THIS SURVEY BE COMMENCED MORE THAN TEN YEARS FROM THIS SAID DATE OF THIS CERTIFICATION SHOWN HEREON.