

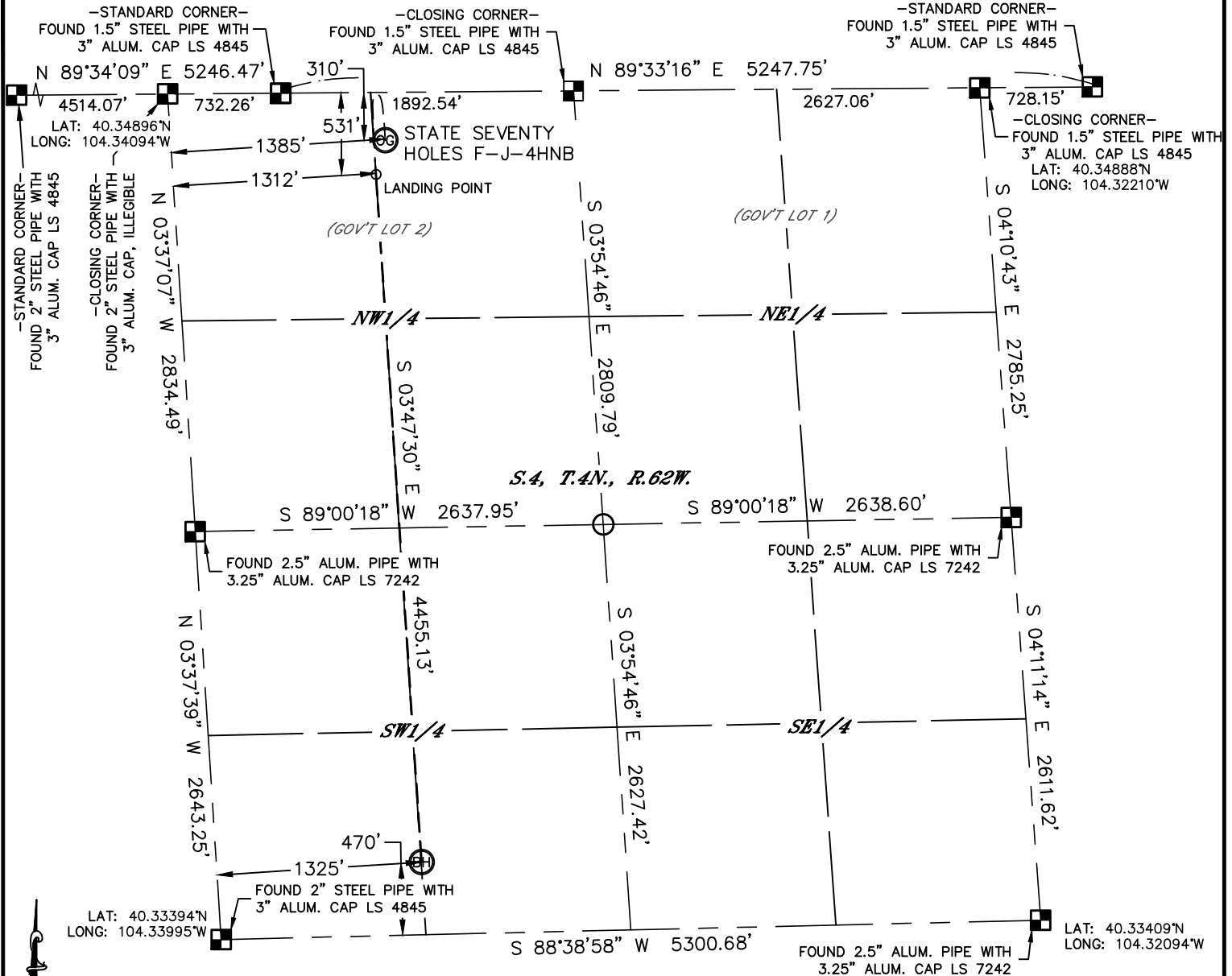


Lat40°, Inc. 1635 Foxtrail Drive, Suite 325 Loveland, CO 970-776-3321

# WELL LOCATION CERTIFICATE

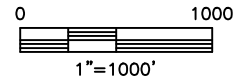
SECTION: 4  
TOWNSHIP: 4N  
RANGE: 62W

THIS MAP DOES NOT REPRESENT A BOUNDARY SURVEY



In accordance with a request from Keith Caplan with BONANZA CREEK ENERGY, INC. Lat40°, Inc. has determined the surface location of the STATE SEVENTY HOLES F-J-4HNB to be 310' from the NORTH line and 1385' from the WEST line and the bottom hole to be 470' from the SOUTH line and 1325' from the WEST line as measured at right angles from the section lines of Section 4, Township 4 North, Range 62 West of the Sixth Principal Meridian, County of Weld, State of Colorado.

I hereby state that this Well Location Certificate was prepared by me, or under my direct supervision, that the fieldwork was completed on 8/9/2013, for and on behalf of BONANZA CREEK ENERGY, INC. That this is not a Land Survey Plat or an Improvement Survey Plat, and that it is not to be relied upon for establishment of fence, building, or other future improvement lines.



NOTE:

- 1) Bearings shown are Grid Bearings of the Colorado State Plane Coordinate System, North Zone, North American Datum 1983/2007. The lineal dimensions as contained herein are based upon the "U.S. Survey Foot."
- 2) Ground elevations are based on an observed GPS elevation (NAVD 1988 DATUM).
- 3) IMPROVEMENTS: See LOCATION DRAWING for all visible improvements within 400' of disturbed area.
- 4) SURFACE USE: RANGELAND
- 5) INSTRUMENT OPERATOR: ADAM KELLY
- 6) NEAREST CULTURAL ITEMS:  
BUILDING: 5280'+  
BUILDING UNIT: 5280'+  
HIGH OCCUPANCY BUILDING UNIT: 5280'+  
DESIGNATED OUTSIDE ACTIVITY AREA: 5280'+  
PUBLIC ROAD 5280'+  
ABOVE GROUND UTILITY 5280'+  
RAILROAD 5280'+  
PROPERTY LINE 310' N

SURFACE LOCATION

LAT: 40.34808°N  
LONG: 104.33590°W  
PDOP: 1.6  
ELEV: 4551'  
1/41/4: NE1/4NW1/4

BOTTOM HOLE

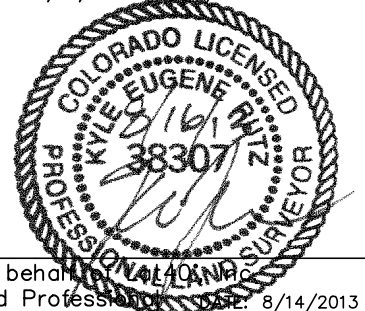
LAT: 40.33527°N  
LONG: 104.33528°W  
1/41/4: SE1/4SW1/4

LANDING POINT

LAT: 40.34748°N  
LONG: 104.33613°W  
1/41/4: NE1/4NW1/4

LEGEND

- = ALIQUOT MONUMENT AS DESCRIBED
- = CALCULATED POSITION



Kyle E. Rutz—On behalf of  
Colorado Licensed Professional Land Surveyor No. 38307  
DATE: 8/14/2013  
PROJECT#: 2012179