



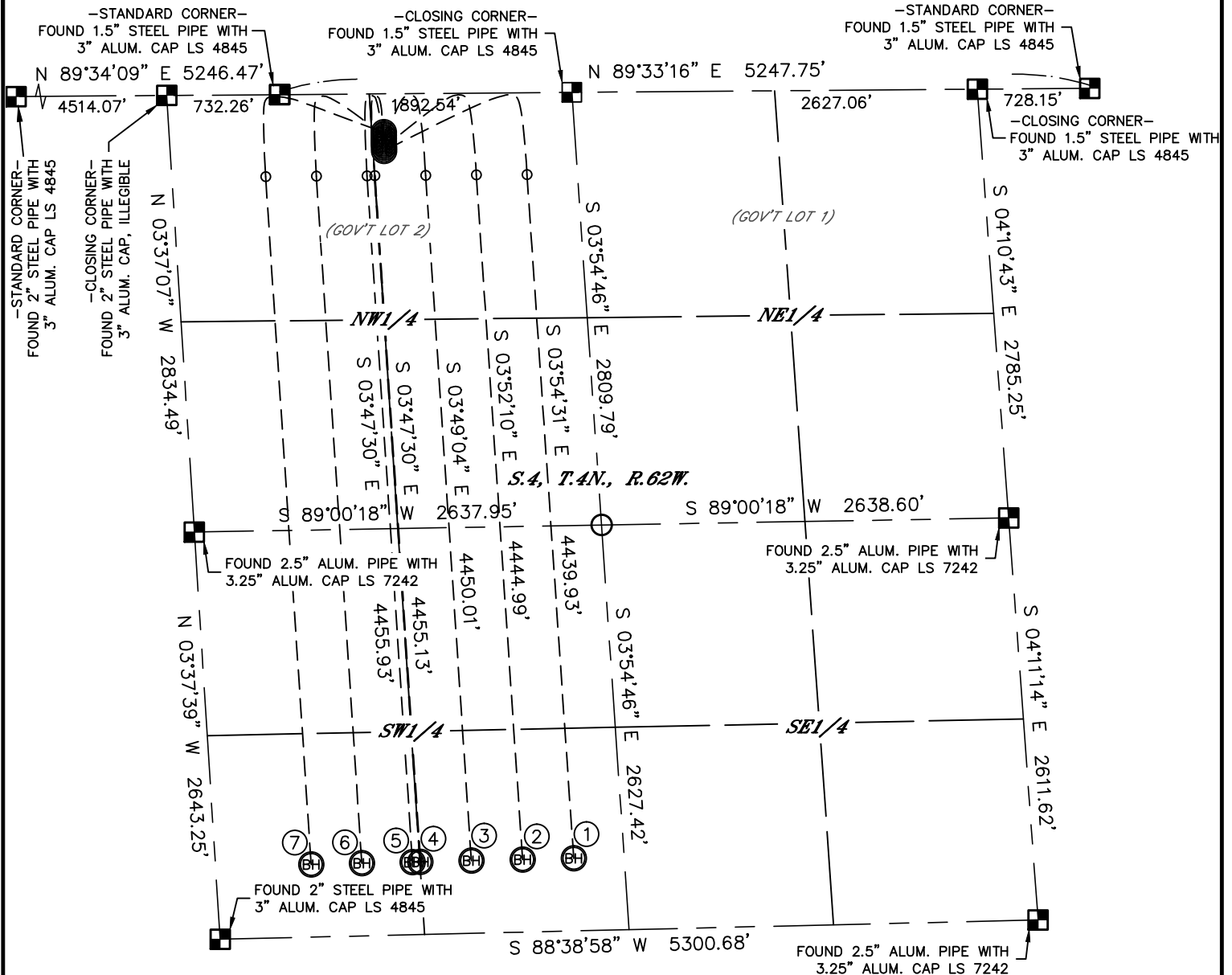
Lat40°, Inc. 1635 Foxtrail Drive, Suite 325 Loveland, CO 970-776-3321

MULTI-WELL PLAN

SECTION: 4
TOWNSHIP: 4N
RANGE: 62W

STATE SEVENTY HOLES F-4 PAD

THIS MAP DOES NOT REPRESENT A BOUNDARY SURVEY



①

-SURFACE LOCATION-
STATE SEVENTY HOLES
K21-024-4HNB
370' FNL
1382' FWL
LAT: 40.34792°N
LONG: 104.33591°W

②

-SURFACE LOCATION-
STATE SEVENTY HOLES
21-24-4HNB
350' FNL
1383' FWL
LAT: 40.34797°N
LONG: 104.33591°W

③

-SURFACE LOCATION-
STATE SEVENTY HOLES
F21-J24-4HNB
330' FNL
1384' FWL
LAT: 40.34803°N
LONG: 104.33591°W

④

-SURFACE LOCATION-
STATE SEVENTY HOLES
F-J-4HNB
310' FNL
1385' FWL
LAT: 40.34808°N
LONG: 104.33590°W

⑤

-SURFACE LOCATION-
STATE SEVENTY HOLES
F-J-4HC
290' FNL
1386' FWL
LAT: 40.34814°N
LONG: 104.33590°W

⑥

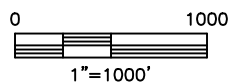
-SURFACE LOCATION-
STATE SEVENTY HOLES
A6-04
270' FNL
1387' FWL
LAT: 40.34819°N
LONG: 104.33590°W

⑦

-SURFACE LOCATION-
STATE SEVENTY HOLES
A7-04
250' FNL
1388' FWL
LAT: 40.34825°N
LONG: 104.33590°W

LEGEND

- = ALIQUOT MONUMENT AS DESCRIBED
- = CALCULATED POSITION



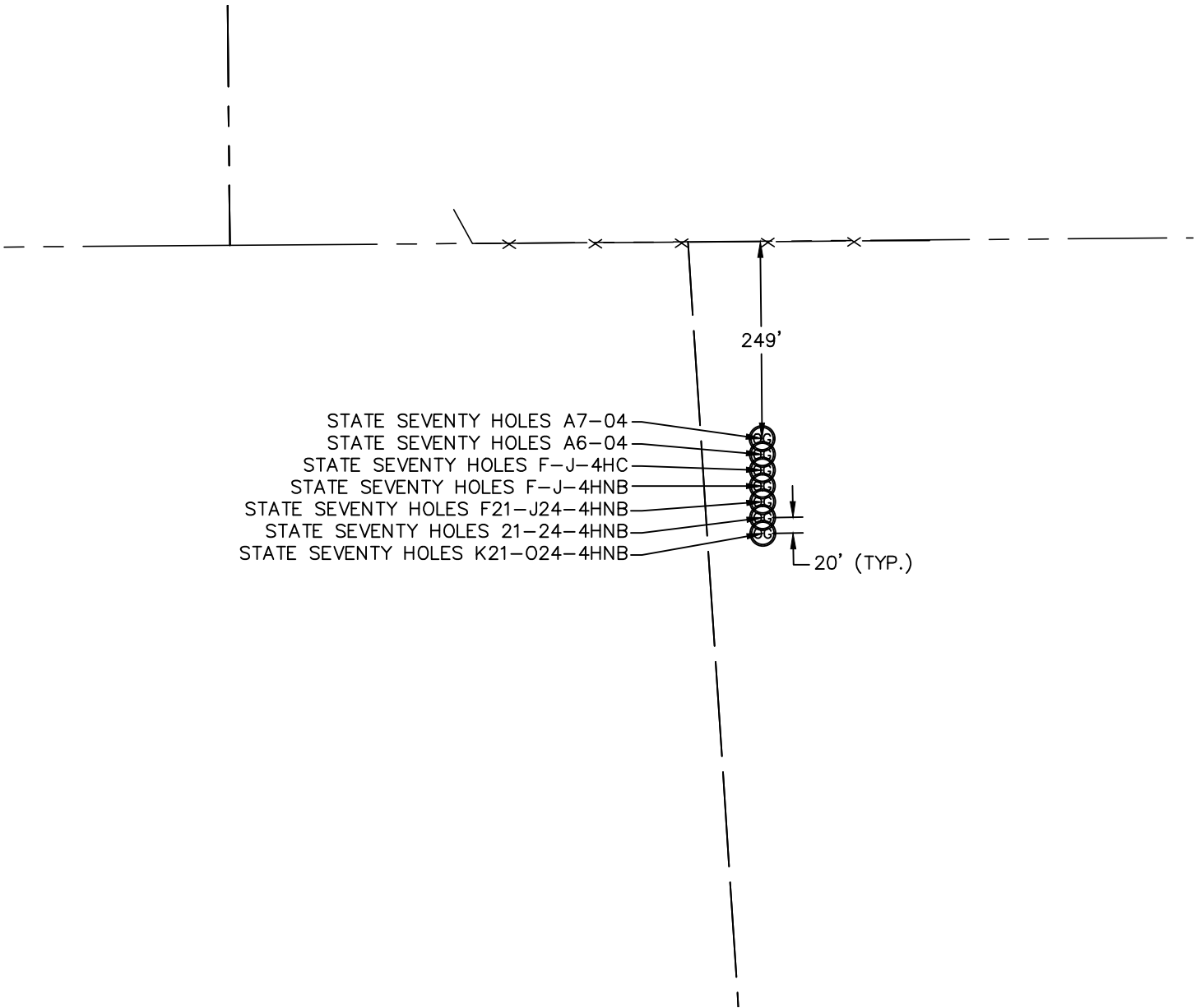
DATE: 8/14/2013
PROJECT#: 2012179



Lat40°, Inc. 1635 Foxtrail Drive, Suite 325 Loveland, CO 970-776-3321

MULTI-WELL PLAN
STATE SEVENTY HOLES F-4 PAD

SECTION: 4
TOWNSHIP: 4N
RANGE: 62W



DATE: 8/14/2013
PROJECT#: 2012179