

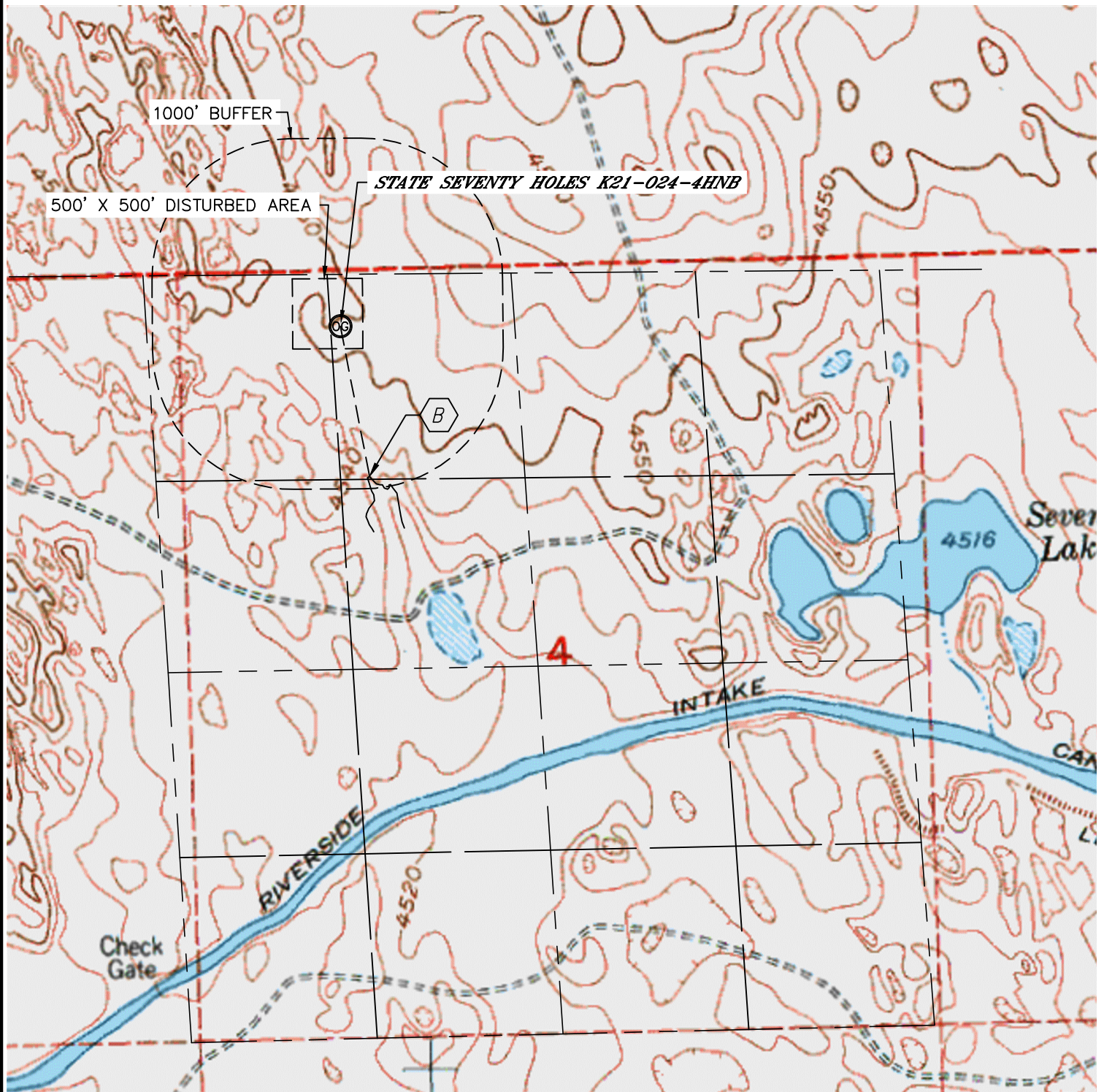


Lat40°, Inc. 1635 Foxtrail Drive, Suite 325 Loveland, CO 970-776-3321

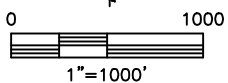
HYDROLOGY MAP

STATE SEVENTY HOLES F-4 PAD

SECTION: 4
TOWNSHIP: 4N
RANGE: 62W



LOW AREA 1090' SE



DATE: 8/14/2013
PROJECT#: 2012179