

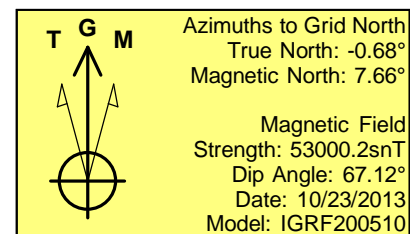
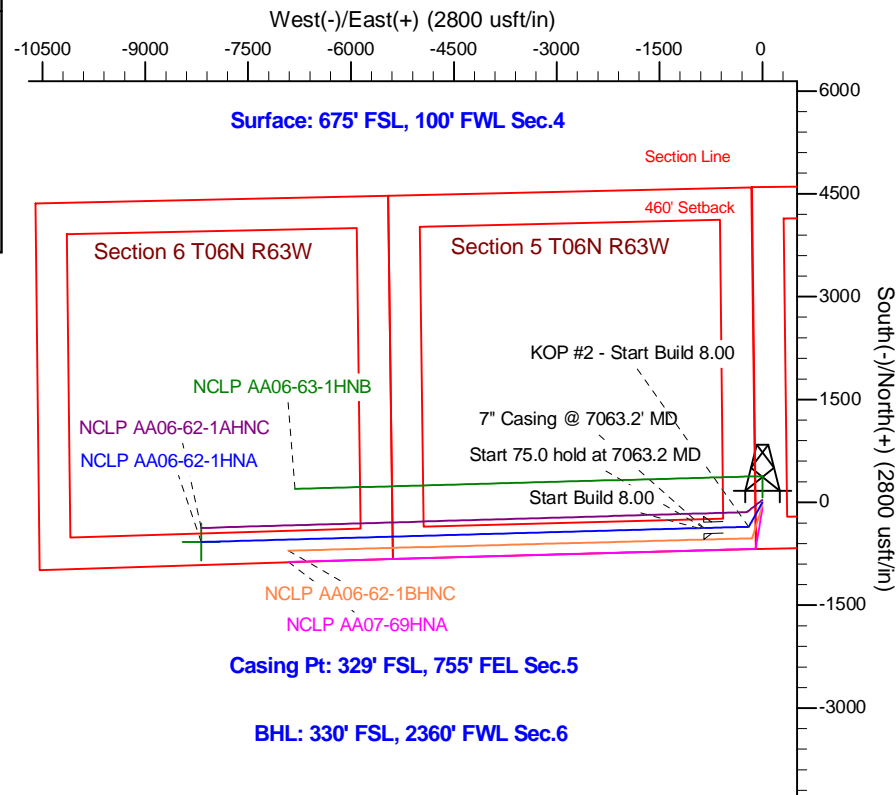
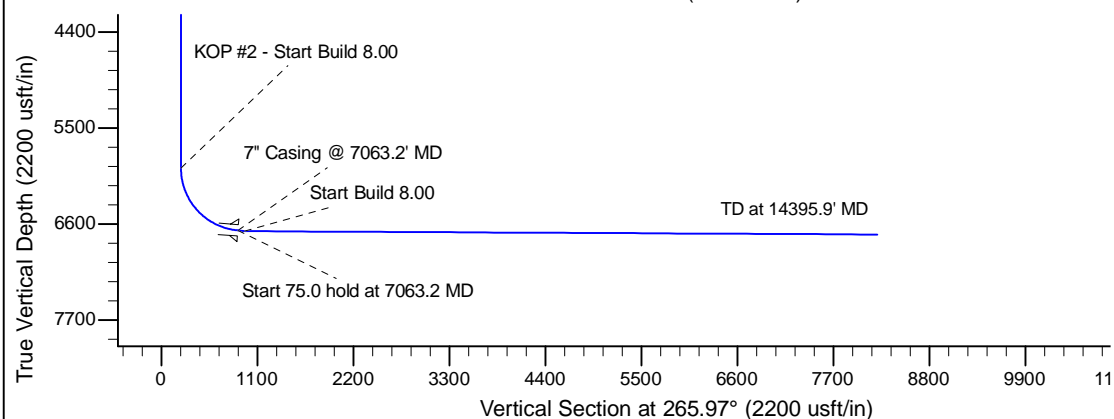
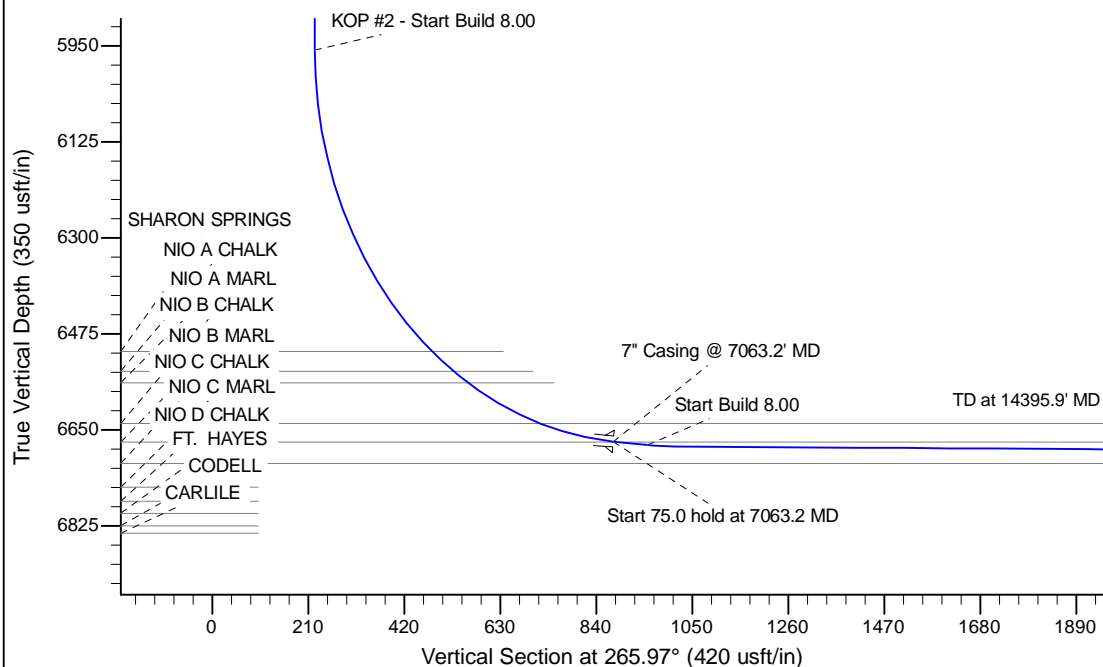
Project: Wattenberg Field
Site: AA (Sec.4-T06N-R63W) Weld County, CO
Well: NCLP AA06-62-1HNA
Wellbore: Original Drilling
Design: APD - Rev 0

Northern Region Drilling - Working

Geodetic System: US State Plane 1983
Datum: North American Datum 1983
Ellipsoid: GRS 1980
Zone: Colorado Northern Zone
System Datum: Mean Sea Level

SECTION DETAILS

Sec	MD	Inc	Azi	TVD	+N/-S	+E/-W	Dleg	TFace	VSec	Target
1	0.0	0.00	0.00	0.0	0.0	0.0	0.00	0.00	0.0	
2	1500.0	0.00	0.00	1500.0	0.0	0.0	0.00	0.00	0.0	
3	2201.9	14.04	209.40	2194.9	-74.6	-42.0	2.00	209.40	47.1	
4	3176.2	14.04	209.40	3140.1	-280.4	-158.0	0.00	0.00	177.3	
5	3878.1	0.00	0.00	3835.0	-355.0	-200.0	2.00	180.00	224.4	
6	6000.7	0.00	0.00	5957.6	-355.0	-200.0	0.00	0.00	224.4	
7	7063.2	85.00	268.41	6671.1	-373.1	-853.5	8.00	268.41	877.6	
8	7138.2	85.00	268.41	6677.6	-375.2	-928.2	0.00	0.00	952.3	
9	7196.9	89.70	268.41	6680.3	-376.8	-986.9	8.00	0.00	1010.9	
10	14395.9	89.70	268.41	6718.0	-576.4	-8183.0	0.00	0.00	8203.2	NCLP AA06-62-1HNA BHL 330'FSL, 2360'FWL



WELL DETAILS: NCLP AA06-62-1HNA

Ground Level: 4708.0			
0.0	0.0	Northings	Eastings
1430497.68	3291713.79	Latitude	Longitude
40.510380	-104.450860		

Plan: APD - Rev 0 (NCLP AA06-62-1HNA/Original Drilling)

Created By: Shailey Jewell Date: 13:17, December 05 2013

Checked: _____ Date: _____

Reviewed: _____ Date: _____

Approved: _____ Date: _____