

WPX Energy Rocky Mtn LLC

RWF 442-4

API #05-045-22083-00

420' FNL x 1679' FEL - (NWNE) - SHL

1520' FNL x 1299' FEL - (SENE) - BHL

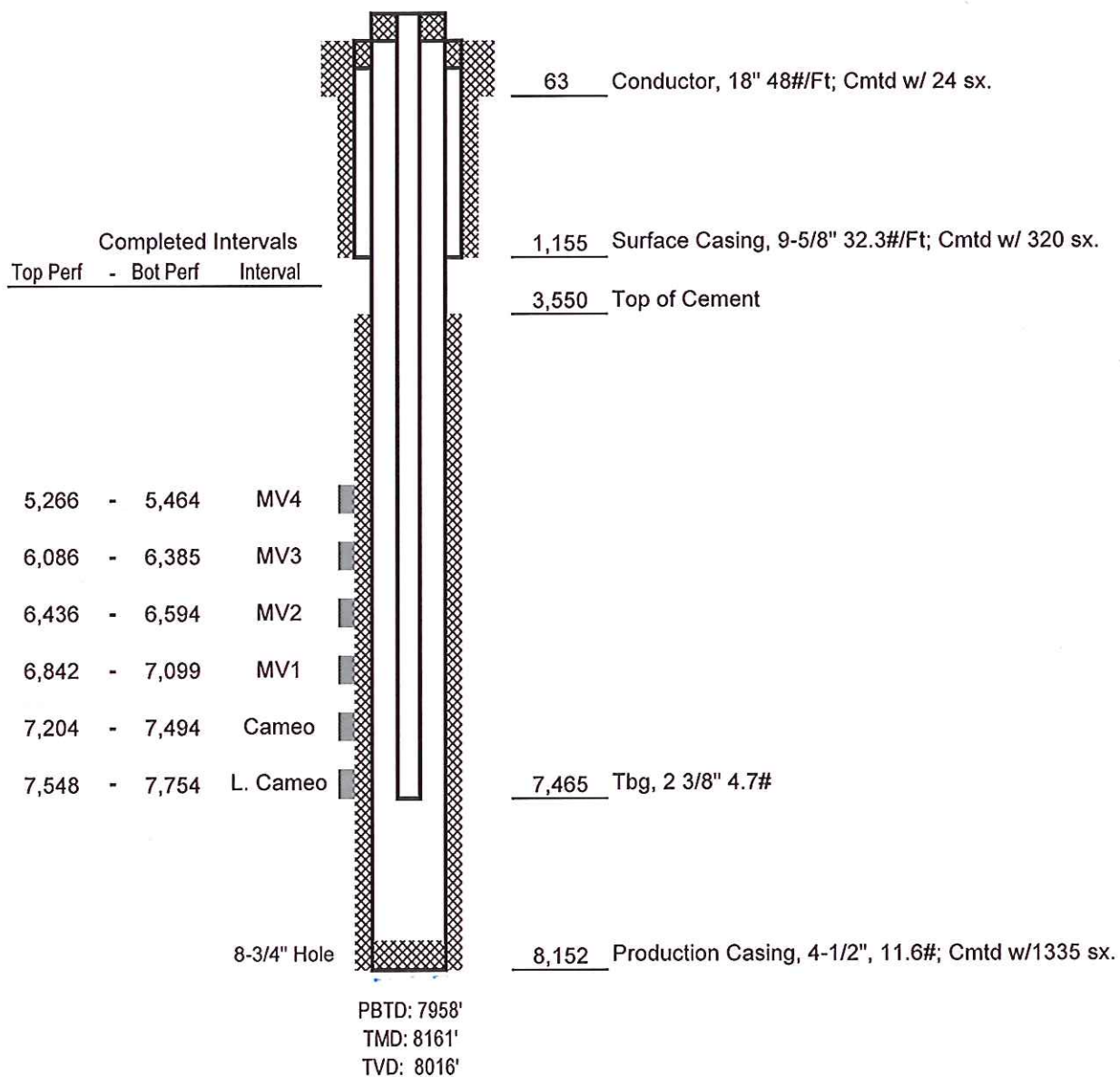
Sec. 4-T7S-R94W

Garfield County, Colorado

Rulison Prospect

FINAL

DATED 01-27-14



Not to Scale