

KERR-MCGEE OIL & GAS ONSHORE LP

Location: COLORADO Slot: SLOT#03 BURKHARDT 35N-3HZ (420'FNL & 1210'FWL, SEC.03)
 Field: WELD COUNTY (KERR MCGEE) Well: BURKHARDT 35N-3HZ
 Facility: SEC.03-T1N-R66W Wellbore: BURKHARDT 35N-3HZ PWB

Plot reference wellpath is BURKHARDT 35N-3HZ (PERMIT REV-1) PWB

True vertical depths are referenced to PERMIT (17RKB) (RKB)	Grid System: NAD83 / Lambert Colorado SP, Northern Zone (601), US feet
Measured depths are referenced to PERMIT (17RKB) (RKB)	North Reference: True north
PERMIT (17RKB) (RKB) to Mean Sea Level: 5036 feet	Scale: True distance
Mean Sea Level to Mud line (At Slot: SLOTR03 BURKHARDT 35N-3HZ (420'FNL & 1210'FWL, SEC.03)): 0 feet	Depths are in feet
Coordinates are in feet referenced to Slot	Created by: robiak01 on 14/Nov2013

Location Information

Facility Name	Grid East (US ft)	Grid North (US ft)	Latitude	Longitude		
SEC.03-T1N-R66W	3204647.315	1275079.541	40°05'10.203"N	104°46'06.906"W		
Slot	Local N (ft)	Local E (ft)	Grid East (US ft)	Grid North (US ft)	Latitude	Longitude
SLOTR03 BURKHARDT 35N-3HZ (420'FNL & 1210'FWL, SEC.03)	-0.20	59.85	3204707.161	1275079.832	40°05'10.201"N	104°46'06.136"W
PERMIT (17RKB) (RKB) to Mud line (At Slot: SLOTR03 BURKHARDT 35N-3HZ (420'FNL & 1210'FWL, SEC.03))						5036ft
Mean Sea Level to Mud line (At Slot: SLOTR03 BURKHARDT 35N-3HZ (420'FNL & 1210'FWL, SEC.03))						0ft
PERMIT (17RKB) (RKB) to Mean Sea Level						5036ft

Survey Program

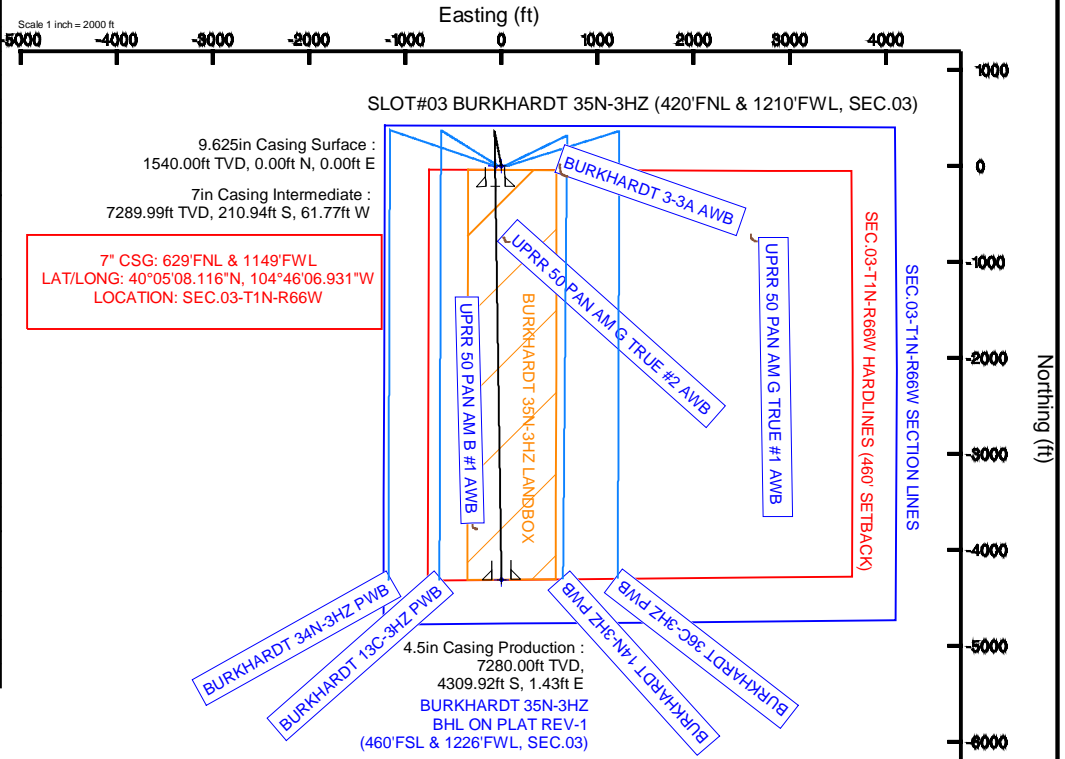
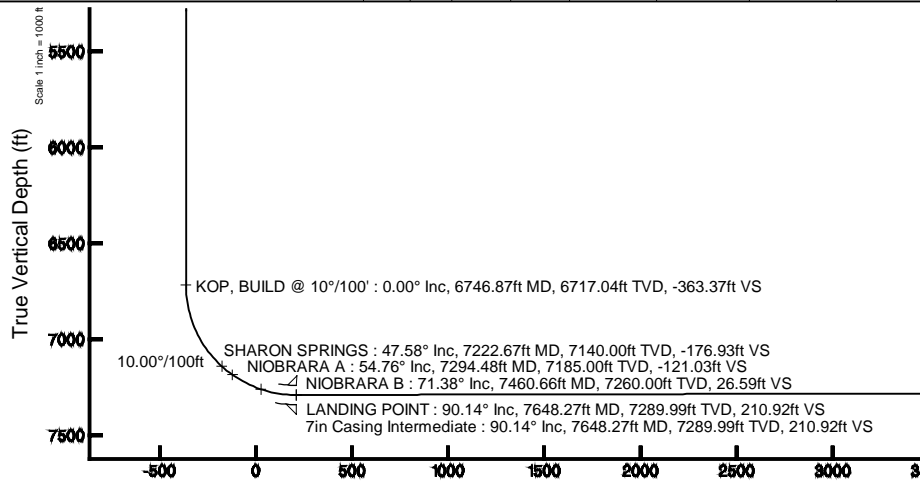
Start MD (ft)	End MD (ft)	Tool	Model	Log Name/Comment	Wellbore
17.00	11747.74	NaviTrak	NaviTrak (MAGCORR,IFR)		BURKHARDT 35N-3HZ PWB

Well Profile Data

Design Comment	MD (ft)	Inc (°)	Az (°)	TVD (ft)	Local N (ft)	Local E (ft)	DLS (°/100ft)	VS (ft)
TIE ON	17.00	0.000	349.000	17.00	0.00	0.00	0.00	0.00
BEGIN NUDGE	1650.00	0.000	349.000	1650.00	0.00	0.00	0.00	0.00
END NUDGE	2150.00	10.000	349.000	2147.47	42.72	-8.30	2.00	-42.73
BEGIN DROP	3780.30	10.000	349.000	3753.00	320.62	-62.32	0.00	-320.64
END DROP	4280.30	0.000	179.117	4250.47	363.34	-70.63	2.00	-363.37
KOP, BUILD @ 10°/100'	6746.87	0.000	179.117	6717.04	363.34	-70.63	0.00	-363.37
LANDING POINT	7648.27	90.140	179.117	7289.99	-210.94	-61.77	10.00	210.92
TOTAL DEPTH	11747.74	90.140	179.117	7280.00	-4309.92	1.43	0.00	4309.92

Targets

Name	MD (ft)	TVD (ft)	Local N (ft)	Local E (ft)	Grid East (US ft)	Grid North (US ft)	Latitude	Longitude
BURKHARDT 35N-3HZ BHL ON PLAT REV-1 (460'FSL & 1226'FWL, SEC.03)	11747.74	7280.00	-4309.92	1.43	3204744.15	1270770.25	40°04'27.610"N	104°46'06.118"W
BURKHARDT 35N-3HZ LANDBOX	7280.00	0.00	0.00	0.00	3204707.16	1275079.83	40°05'10.201"N	104°46'06.136"W
SEC.03-T1N-R66W HARDLINES (460' SETBACK)	7300.00	0.20	-59.85	3204647.31	1275079.54	40°05'10.203"N	104°46'06.906"W	
SEC.03-T1N-R66W SECTION LINES	7300.00	0.20	-59.85	3204647.31	1275079.54	40°05'10.203"N	104°46'06.906"W	



BURKHARDT 35N-3HZ BHL ON PLAT REV-1 (460'FSL & 1226'FWL, SEC.03)
 4.5in Casing Production : 90.14° Inc, 11747.74ft MD, 7280.00ft TVD, 4309.92ft VS
 TOTAL DEPTH : 90.14° Inc, 11747.74ft MD, 7280.00ft TVD, 4309.92ft VS



Planned Wellpath Report

BURKHARDT 35N-3HZ (PERMIT REV-1) PWP
Page 1 of 6



REFERENCE WELLPATH IDENTIFICATION

Operator	KERR-MCGEE OIL & GAS ONSHORE LP	Slot	SLOT#03 BURKHARDT 35N-3HZ (420'FNL & 1210'FWL, SEC.
Area	COLORADO	Well	BURKHARDT 35N-3HZ
Field	WELD COUNTY (KERR MCGEE)	Wellbore	BURKHARDT 35N-3HZ PWB
Facility	SEC.03-T1N-R66W		

REPORT SETUP INFORMATION

Projection System	NAD83 / Lambert Colorado SP, Northern Zone (501), US feet	Software System	WellArchitect® 4.0.0
North Reference	True	User	Robiale01
Scale	0.999961	Report Generated	13/Nov/2013 at 16:19
Convergence at slot	n/a	Database/Source file	WellArchitectDB/BURKHARDT_35N-3HZ_PWB.xml

WELLPATH LOCATION

	Local coordinates		Grid coordinates		Geographic coordinates	
	North[ft]	East[ft]	Easting[US ft]	Northing[US ft]	Latitude	Longitude
Slot Location	-0.20	59.85	3204707.16	1275079.83	40°05'10.201"N	104°46'06.136"W
Facility Reference Pt			3204647.32	1275079.54	40°05'10.203"N	104°46'06.906"W
Field Reference Pt			3197771.84	1268891.29	40°04'09.600"N	104°47'36.000"W

WELLPATH DATUM

Calculation method	Minimum curvature	PERMIT (17'RKB) (RKB) to Facility Vertical Datum	5036.00ft
Horizontal Reference Pt	Slot	PERMIT (17'RKB) (RKB) to Mean Sea Level	5036.00ft
Vertical Reference Pt	PERMIT (17'RKB) (RKB)	PERMIT (17'RKB) (RKB) to Mud Line at Slot (SLOT#03 BURKHARDT 35N-3HZ (420'FNL & 1210'FWL, SEC.03))	5036.00ft
MD Reference Pt	PERMIT (17'RKB) (RKB)	Section Origin	N 0.00, E 0.00 ft
Field Vertical Reference	Mean Sea Level	Section Azimuth	179.98°



Planned Wellpath Report

BURKHARDT 35N-3HZ (PERMIT REV-1) PWP

Page 2 of 6



REFERENCE WELLPATH IDENTIFICATION

Operator	KERR-MCGEE OIL & GAS ONSHORE LP	Slot	SLOT#03 BURKHARDT 35N-3HZ (420'FNL & 1210'FWL, SEC.
Area	COLORADO	Well	BURKHARDT 35N-3HZ
Field	WELD COUNTY (KERR MCGEE)	Wellbore	BURKHARDT 35N-3HZ PWB
Facility	SEC.03-T1N-R66W		

WELLPATH DATA (132 stations) † = interpolated/extrapolated station

MD [ft]	Inclination [°]	Azimuth [°]	TVD [ft]	Vert Sect [ft]	North [ft]	East [ft]	Latitude	Longitude	DLS [°/100ft]	Comments
0.00†	0.000	349.000	0.00	0.00	0.00	0.00	40°05'10.201"N	104°46'06.136"W	0.00	
17.00	0.000	349.000	17.00	0.00	0.00	0.00	40°05'10.201"N	104°46'06.136"W	0.00	TIE ON
117.00†	0.000	349.000	117.00	0.00	0.00	0.00	40°05'10.201"N	104°46'06.136"W	0.00	
217.00†	0.000	349.000	217.00	0.00	0.00	0.00	40°05'10.201"N	104°46'06.136"W	0.00	
317.00†	0.000	349.000	317.00	0.00	0.00	0.00	40°05'10.201"N	104°46'06.136"W	0.00	
417.00†	0.000	349.000	417.00	0.00	0.00	0.00	40°05'10.201"N	104°46'06.136"W	0.00	
517.00†	0.000	349.000	517.00	0.00	0.00	0.00	40°05'10.201"N	104°46'06.136"W	0.00	
617.00†	0.000	349.000	617.00	0.00	0.00	0.00	40°05'10.201"N	104°46'06.136"W	0.00	
717.00†	0.000	349.000	717.00	0.00	0.00	0.00	40°05'10.201"N	104°46'06.136"W	0.00	
817.00†	0.000	349.000	817.00	0.00	0.00	0.00	40°05'10.201"N	104°46'06.136"W	0.00	
917.00†	0.000	349.000	917.00	0.00	0.00	0.00	40°05'10.201"N	104°46'06.136"W	0.00	
1017.00†	0.000	349.000	1017.00	0.00	0.00	0.00	40°05'10.201"N	104°46'06.136"W	0.00	
1117.00†	0.000	349.000	1117.00	0.00	0.00	0.00	40°05'10.201"N	104°46'06.136"W	0.00	
1217.00†	0.000	349.000	1217.00	0.00	0.00	0.00	40°05'10.201"N	104°46'06.136"W	0.00	
1317.00†	0.000	349.000	1317.00	0.00	0.00	0.00	40°05'10.201"N	104°46'06.136"W	0.00	
1417.00†	0.000	349.000	1417.00	0.00	0.00	0.00	40°05'10.201"N	104°46'06.136"W	0.00	
1490.00†	0.000	349.000	1490.00	0.00	0.00	0.00	40°05'10.201"N	104°46'06.136"W	0.00	FOX HILLS MARKER
1517.00†	0.000	349.000	1517.00	0.00	0.00	0.00	40°05'10.201"N	104°46'06.136"W	0.00	
1617.00†	0.000	349.000	1617.00	0.00	0.00	0.00	40°05'10.201"N	104°46'06.136"W	0.00	
1650.00	0.000	349.000	1650.00	0.00	0.00	0.00	40°05'10.201"N	104°46'06.136"W	0.00	BEGIN NUDGE
1717.00†	1.340	349.000	1716.99	-0.77	0.77	-0.15	40°05'10.209"N	104°46'06.138"W	2.00	
1817.00†	3.340	349.000	1816.91	-4.78	4.78	-0.93	40°05'10.248"N	104°46'06.148"W	2.00	
1917.00†	5.340	349.000	1916.61	-12.21	12.20	-2.37	40°05'10.322"N	104°46'06.167"W	2.00	
2017.00†	7.340	349.000	2016.00	-23.05	23.04	-4.48	40°05'10.429"N	104°46'06.194"W	2.00	
2117.00†	9.340	349.000	2114.93	-37.28	37.28	-7.25	40°05'10.569"N	104°46'06.229"W	2.00	
2150.00	10.000	349.000	2147.47	-42.73	42.72	-8.30	40°05'10.623"N	104°46'06.243"W	2.00	END NUDGE
2217.00†	10.000	349.000	2213.45	-54.15	54.14	-10.52	40°05'10.736"N	104°46'06.271"W	0.00	
2317.00†	10.000	349.000	2311.93	-71.19	71.19	-13.84	40°05'10.905"N	104°46'06.314"W	0.00	
2417.00†	10.000	349.000	2410.41	-88.24	88.24	-17.15	40°05'11.073"N	104°46'06.357"W	0.00	
2517.00†	10.000	349.000	2508.89	-105.29	105.28	-20.46	40°05'11.241"N	104°46'06.399"W	0.00	
2617.00†	10.000	349.000	2607.37	-122.33	122.33	-23.78	40°05'11.410"N	104°46'06.442"W	0.00	
2717.00†	10.000	349.000	2705.85	-139.38	139.37	-27.09	40°05'11.578"N	104°46'06.485"W	0.00	
2817.00†	10.000	349.000	2804.33	-156.43	156.42	-30.40	40°05'11.747"N	104°46'06.527"W	0.00	
2917.00†	10.000	349.000	2902.81	-173.48	173.46	-33.72	40°05'11.915"N	104°46'06.570"W	0.00	
3017.00†	10.000	349.000	3001.29	-190.52	190.51	-37.03	40°05'12.084"N	104°46'06.612"W	0.00	
3117.00†	10.000	349.000	3099.77	-207.57	207.56	-40.34	40°05'12.252"N	104°46'06.655"W	0.00	
3217.00†	10.000	349.000	3198.26	-224.62	224.60	-43.66	40°05'12.421"N	104°46'06.698"W	0.00	
3317.00†	10.000	349.000	3296.74	-241.66	241.65	-46.97	40°05'12.589"N	104°46'06.740"W	0.00	
3417.00†	10.000	349.000	3395.22	-258.71	258.69	-50.28	40°05'12.757"N	104°46'06.783"W	0.00	
3517.00†	10.000	349.000	3493.70	-275.76	275.74	-53.60	40°05'12.926"N	104°46'06.826"W	0.00	
3617.00†	10.000	349.000	3592.18	-292.80	292.78	-56.91	40°05'13.094"N	104°46'06.868"W	0.00	
3717.00†	10.000	349.000	3690.66	-309.85	309.83	-60.22	40°05'13.263"N	104°46'06.911"W	0.00	
3780.30	10.000	349.000	3753.00	-320.64	320.62	-62.32	40°05'13.369"N	104°46'06.938"W	0.00	BEGIN DROP
3817.00†	9.266	349.000	3789.18	-326.67	326.65	-63.49	40°05'13.429"N	104°46'06.953"W	2.00	
3917.00†	7.266	349.000	3888.14	-340.78	340.76	-66.24	40°05'13.568"N	104°46'06.988"W	2.00	



Planned Wellpath Report

BURKHARDT 35N-3HZ (PERMIT REV-1) PWP

Page 3 of 6



REFERENCE WELLPATH IDENTIFICATION			
Operator	KERR-MCGEE OIL & GAS ONSHORE LP	Slot	SLOT#03 BURKHARDT 35N-3HZ (420'FNL & 1210'FWL, SEC.
Area	COLORADO	Well	BURKHARDT 35N-3HZ
Field	WELD COUNTY (KERR MCGEE)	Wellbore	BURKHARDT 35N-3HZ PWB
Facility	SEC.03-T1N-R66W		

WELLPATH DATA (132 stations) † = interpolated/extrapolated station										
MD [ft]	Inclination [°]	Azimuth [°]	TVD [ft]	Vert Sect [ft]	North [ft]	East [ft]	Latitude	Longitude	DLS [°/100ft]	Comments
4017.00†	5.266	349.000	3987.53	-351.50	351.47	-68.32	40°05'13.674"N	104°46'07.015"W	2.00	
4077.67†	4.053	349.000	4048.00	-356.33	356.31	-69.26	40°05'13.722"N	104°46'07.027"W	2.00	PARKMAN
4117.00†	3.266	349.000	4087.25	-358.80	358.78	-69.74	40°05'13.746"N	104°46'07.033"W	2.00	
4217.00†	1.266	349.000	4187.17	-362.68	362.66	-70.49	40°05'13.785"N	104°46'07.043"W	2.00	
4280.30	0.000	179.117	4250.47	-363.37	363.34	-70.63	40°05'13.792"N	104°46'07.045"W	2.00	END DROP
4317.00†	0.000	179.117	4287.16	-363.37	363.34	-70.63	40°05'13.792"N	104°46'07.045"W	0.00	
4417.00†	0.000	179.117	4387.16	-363.37	363.34	-70.63	40°05'13.792"N	104°46'07.045"W	0.00	
4517.00†	0.000	179.117	4487.16	-363.37	363.34	-70.63	40°05'13.792"N	104°46'07.045"W	0.00	
4617.00†	0.000	179.117	4587.16	-363.37	363.34	-70.63	40°05'13.792"N	104°46'07.045"W	0.00	
4617.84†	0.000	179.117	4588.00	-363.37	363.34	-70.63	40°05'13.792"N	104°46'07.045"W	0.00	SUSSEX
4717.00†	0.000	179.117	4687.16	-363.37	363.34	-70.63	40°05'13.792"N	104°46'07.045"W	0.00	
4817.00†	0.000	179.117	4787.16	-363.37	363.34	-70.63	40°05'13.792"N	104°46'07.045"W	0.00	
4917.00†	0.000	179.117	4887.16	-363.37	363.34	-70.63	40°05'13.792"N	104°46'07.045"W	0.00	
5017.00†	0.000	179.117	4987.16	-363.37	363.34	-70.63	40°05'13.792"N	104°46'07.045"W	0.00	
5117.00†	0.000	179.117	5087.16	-363.37	363.34	-70.63	40°05'13.792"N	104°46'07.045"W	0.00	
5217.00†	0.000	179.117	5187.16	-363.37	363.34	-70.63	40°05'13.792"N	104°46'07.045"W	0.00	
5317.00†	0.000	179.117	5287.16	-363.37	363.34	-70.63	40°05'13.792"N	104°46'07.045"W	0.00	
5417.00†	0.000	179.117	5387.16	-363.37	363.34	-70.63	40°05'13.792"N	104°46'07.045"W	0.00	
5517.00†	0.000	179.117	5487.16	-363.37	363.34	-70.63	40°05'13.792"N	104°46'07.045"W	0.00	
5617.00†	0.000	179.117	5587.16	-363.37	363.34	-70.63	40°05'13.792"N	104°46'07.045"W	0.00	
5717.00†	0.000	179.117	5687.16	-363.37	363.34	-70.63	40°05'13.792"N	104°46'07.045"W	0.00	
5817.00†	0.000	179.117	5787.16	-363.37	363.34	-70.63	40°05'13.792"N	104°46'07.045"W	0.00	
5917.00†	0.000	179.117	5887.16	-363.37	363.34	-70.63	40°05'13.792"N	104°46'07.045"W	0.00	
6017.00†	0.000	179.117	5987.16	-363.37	363.34	-70.63	40°05'13.792"N	104°46'07.045"W	0.00	
6117.00†	0.000	179.117	6087.16	-363.37	363.34	-70.63	40°05'13.792"N	104°46'07.045"W	0.00	
6217.00†	0.000	179.117	6187.16	-363.37	363.34	-70.63	40°05'13.792"N	104°46'07.045"W	0.00	
6317.00†	0.000	179.117	6287.16	-363.37	363.34	-70.63	40°05'13.792"N	104°46'07.045"W	0.00	
6417.00†	0.000	179.117	6387.16	-363.37	363.34	-70.63	40°05'13.792"N	104°46'07.045"W	0.00	
6517.00†	0.000	179.117	6487.16	-363.37	363.34	-70.63	40°05'13.792"N	104°46'07.045"W	0.00	
6617.00†	0.000	179.117	6587.16	-363.37	363.34	-70.63	40°05'13.792"N	104°46'07.045"W	0.00	
6717.00†	0.000	179.117	6687.16	-363.37	363.34	-70.63	40°05'13.792"N	104°46'07.045"W	0.00	
6746.87	0.000	179.117	6717.04	-363.37	363.34	-70.63	40°05'13.792"N	104°46'07.045"W	0.00	KOP, BUILD @ 10°/100'
6817.00†	7.013	179.117	6786.99	-359.08	359.06	-70.56	40°05'13.749"N	104°46'07.044"W	10.00	
6917.00†	17.013	179.117	6884.67	-338.30	338.27	-70.24	40°05'13.544"N	104°46'07.040"W	10.00	
7017.00†	27.013	179.117	6977.27	-300.87	300.84	-69.66	40°05'13.174"N	104°46'07.032"W	10.00	
7117.00†	37.013	179.117	7061.95	-247.93	247.91	-68.85	40°05'12.651"N	104°46'07.022"W	10.00	
7217.00†	47.013	179.117	7136.16	-181.09	181.07	-67.82	40°05'11.990"N	104°46'07.009"W	10.00	
7222.67†	47.579	179.117	7140.00	-176.93	176.91	-67.75	40°05'11.949"N	104°46'07.008"W	10.00	SHARON SPRINGS
7294.48†	54.761	179.117	7185.00	-121.03	121.00	-66.89	40°05'11.397"N	104°46'06.997"W	10.00	NIOBRARA A
7317.00†	57.013	179.117	7197.63	-102.39	102.37	-66.60	40°05'11.213"N	104°46'06.993"W	10.00	
7417.00†	67.013	179.117	7244.50	-14.20	14.18	-65.24	40°05'10.341"N	104°46'06.975"W	10.00	
7460.66†	71.379	179.117	7260.00	26.59	-26.62	-64.61	40°05'09.938"N	104°46'06.967"W	10.00	NIOBRARA B
7517.00†	77.013	179.117	7275.34	80.78	-80.80	-63.78	40°05'09.403"N	104°46'06.957"W	10.00	
7617.00†	87.013	179.117	7289.21	179.67	-179.69	-62.25	40°05'08.425"N	104°46'06.937"W	10.00	
7648.27	90.140	179.117	7289.99	210.92	-210.94	-61.77	40°05'08.116"N	104°46'06.931"W	10.00	LANDING POINT



Planned Wellpath Report

BURKHARDT 35N-3HZ (PERMIT REV-1) PWP

Page 4 of 6



REFERENCE WELLPATH IDENTIFICATION

Operator	KERR-MCGEE OIL & GAS ONSHORE LP	Slot	SLOT#03 BURKHARDT 35N-3HZ (420'FNL & 1210'FWL, SEC.
Area	COLORADO	Well	BURKHARDT 35N-3HZ
Field	WELD COUNTY (KERR MCGEE)	Wellbore	BURKHARDT 35N-3HZ PWB
Facility	SEC.03-T1N-R66W		

WELLPATH DATA (132 stations) † = interpolated/extrapolated station

MD [ft]	Inclination [°]	Azimuth [°]	TVD [ft]	Vert Sect [ft]	North [ft]	East [ft]	Latitude	Longitude	DLS [°/100ft]	Comments
7717.00†	90.140	179.117	7289.82	279.64	-279.66	-60.71	40°05'07.437"N	104°46'06.917"W	0.00	
7817.00†	90.140	179.117	7289.58	379.63	-379.65	-59.17	40°05'06.449"N	104°46'06.897"W	0.00	
7917.00†	90.140	179.117	7289.34	479.62	-479.64	-57.63	40°05'05.461"N	104°46'06.877"W	0.00	
8017.00†	90.140	179.117	7289.09	579.61	-579.63	-56.09	40°05'04.473"N	104°46'06.858"W	0.00	
8117.00†	90.140	179.117	7288.85	679.60	-679.62	-54.55	40°05'03.485"N	104°46'06.838"W	0.00	
8217.00†	90.140	179.117	7288.61	779.59	-779.60	-53.00	40°05'02.497"N	104°46'06.818"W	0.00	
8317.00†	90.140	179.117	7288.36	879.57	-879.59	-51.46	40°05'01.509"N	104°46'06.798"W	0.00	
8417.00†	90.140	179.117	7288.12	979.56	-979.58	-49.92	40°05'00.521"N	104°46'06.778"W	0.00	
8517.00†	90.140	179.117	7287.87	1079.55	-1079.57	-48.38	40°04'59.533"N	104°46'06.758"W	0.00	
8617.00†	90.140	179.117	7287.63	1179.54	-1179.56	-46.84	40°04'58.544"N	104°46'06.739"W	0.00	
8717.00†	90.140	179.117	7287.39	1279.53	-1279.54	-45.30	40°04'57.556"N	104°46'06.719"W	0.00	
8817.00†	90.140	179.117	7287.14	1379.52	-1379.53	-43.75	40°04'56.568"N	104°46'06.699"W	0.00	
8917.00†	90.140	179.117	7286.90	1479.50	-1479.52	-42.21	40°04'55.580"N	104°46'06.679"W	0.00	
9017.00†	90.140	179.117	7286.66	1579.49	-1579.51	-40.67	40°04'54.592"N	104°46'06.659"W	0.00	
9117.00†	90.140	179.117	7286.41	1679.48	-1679.49	-39.13	40°04'53.604"N	104°46'06.639"W	0.00	
9217.00†	90.140	179.117	7286.17	1779.47	-1779.48	-37.59	40°04'52.616"N	104°46'06.620"W	0.00	
9317.00†	90.140	179.117	7285.92	1879.46	-1879.47	-36.04	40°04'51.628"N	104°46'06.600"W	0.00	
9417.00†	90.140	179.117	7285.68	1979.45	-1979.46	-34.50	40°04'50.640"N	104°46'06.580"W	0.00	
9517.00†	90.140	179.117	7285.44	2079.43	-2079.45	-32.96	40°04'49.652"N	104°46'06.560"W	0.00	
9617.00†	90.140	179.117	7285.19	2179.42	-2179.43	-31.42	40°04'48.663"N	104°46'06.540"W	0.00	
9717.00†	90.140	179.117	7284.95	2279.41	-2279.42	-29.88	40°04'47.675"N	104°46'06.520"W	0.00	
9817.00†	90.140	179.117	7284.71	2379.40	-2379.41	-28.34	40°04'46.687"N	104°46'06.501"W	0.00	
9917.00†	90.140	179.117	7284.46	2479.39	-2479.40	-26.79	40°04'45.699"N	104°46'06.481"W	0.00	
10017.00†	90.140	179.117	7284.22	2579.38	-2579.38	-25.25	40°04'44.711"N	104°46'06.461"W	0.00	
10117.00†	90.140	179.117	7283.97	2679.36	-2679.37	-23.71	40°04'43.723"N	104°46'06.441"W	0.00	
10217.00†	90.140	179.117	7283.73	2779.35	-2779.36	-22.17	40°04'42.735"N	104°46'06.421"W	0.00	
10317.00†	90.140	179.117	7283.49	2879.34	-2879.35	-20.63	40°04'41.747"N	104°46'06.401"W	0.00	
10417.00†	90.140	179.117	7283.24	2979.33	-2979.34	-19.09	40°04'40.759"N	104°46'06.382"W	0.00	
10517.00†	90.140	179.117	7283.00	3079.32	-3079.32	-17.54	40°04'39.771"N	104°46'06.362"W	0.00	
10617.00†	90.140	179.117	7282.76	3179.31	-3179.31	-16.00	40°04'38.782"N	104°46'06.342"W	0.00	
10717.00†	90.140	179.117	7282.51	3279.29	-3279.30	-14.46	40°04'37.794"N	104°46'06.322"W	0.00	
10817.00†	90.140	179.117	7282.27	3379.28	-3379.29	-12.92	40°04'36.806"N	104°46'06.302"W	0.00	
10917.00†	90.140	179.117	7282.02	3479.27	-3479.28	-11.38	40°04'35.818"N	104°46'06.282"W	0.00	
11017.00†	90.140	179.117	7281.78	3579.26	-3579.26	-9.84	40°04'34.830"N	104°46'06.263"W	0.00	
11117.00†	90.140	179.117	7281.54	3679.25	-3679.25	-8.29	40°04'33.842"N	104°46'06.243"W	0.00	
11217.00†	90.140	179.117	7281.29	3779.24	-3779.24	-6.75	40°04'32.854"N	104°46'06.223"W	0.00	
11317.00†	90.140	179.117	7281.05	3879.22	-3879.23	-5.21	40°04'31.866"N	104°46'06.203"W	0.00	
11417.00†	90.140	179.117	7280.81	3979.21	-3979.21	-3.67	40°04'30.878"N	104°46'06.183"W	0.00	
11517.00†	90.140	179.117	7280.56	4079.20	-4079.20	-2.13	40°04'29.890"N	104°46'06.163"W	0.00	
11617.00†	90.140	179.117	7280.32	4179.19	-4179.19	-0.59	40°04'28.901"N	104°46'06.144"W	0.00	
11717.00†	90.140	179.117	7280.07	4279.18	-4279.18	0.96	40°04'27.913"N	104°46'06.124"W	0.00	
11747.74	90.140	179.117	7280.00 ¹	4309.92	-4309.92	1.43	40°04'27.610"N	104°46'06.118"W	0.00	TOTAL DEPTH



Planned Wellpath Report

BURKHARDT 35N-3HZ (PERMIT REV-1) PWP

Page 5 of 6



REFERENCE WELLPATH IDENTIFICATION

Operator	KERR-MCGEE OIL & GAS ONSHORE LP	Slot	SLOT#03 BURKHARDT 35N-3HZ (420'FNL & 1210'FWL, SEC.
Area	COLORADO	Well	BURKHARDT 35N-3HZ
Field	WELD COUNTY (KERR MCGEE)	Wellbore	BURKHARDT 35N-3HZ PWB
Facility	SEC.03-T1N-R66W		

HOLE & CASING SECTIONS -

Ref Wellbore: BURKHARDT 35N-3HZ PWB Ref Wellpath: BURKHARDT 35N-3HZ (PERMIT REV-1) PWP

String/Diameter	Start MD [ft]	End MD [ft]	Interval [ft]	Start TVD [ft]	End TVD [ft]	Start N/S [ft]	Start E/W [ft]	End N/S [ft]	End E/W [ft]
13.5in Open Hole	17.00	1540.00	1523.00	17.00	1540.00	0.00	0.00	0.00	0.00
9.625in Casing Surface	17.00	1540.00	1523.00	17.00	1540.00	0.00	0.00	0.00	0.00
8.75in Open Hole	1540.00	7648.27	6108.27	1540.00	7289.99	0.00	0.00	-210.94	-61.77
7in Casing Intermediate	17.00	7648.27	7631.27	17.00	7289.99	0.00	0.00	-210.94	-61.77
6.125in Open Hole	7648.27	11747.74	4099.47	7289.99	7280.00	-210.94	-61.77	-4309.92	1.43
4.5in Casing Production	17.00	11747.74	11730.74	17.00	7280.00	0.00	0.00	-4309.92	1.43

TARGETS

Name	MD [ft]	TVD [ft]	North [ft]	East [ft]	Grid East [US ft]	Grid North [US ft]	Latitude	Longitude	Shape
1) BURKHARDT 35N-3HZ BHL ON PLAT REV-1 (460'FSL & 1226'FWL, SEC.03)	11747.74	7280.00	-4309.92	1.43	3204744.15	1270770.25	40°04'27.610"N	104°46'06.118"W	point
BURKHARDT 35N-3HZ LANDBOX		7280.00	0.00	0.00	3204707.16	1275079.83	40°05'10.201"N	104°46'06.136"W	polygon
SEC.03-T1N-R66W HARDLINES (460' SETBACK)		7300.00	0.20	-59.85	3204647.31	1275079.54	40°05'10.203"N	104°46'06.906"W	polygon
SEC.03-T1N-R66W SECTION LINES		7300.00	0.20	-59.85	3204647.31	1275079.54	40°05'10.203"N	104°46'06.906"W	polygon

SURVEY PROGRAM -

Ref Wellbore: BURKHARDT 35N-3HZ PWB Ref Wellpath: BURKHARDT 35N-3HZ (PERMIT REV-1) PWP

Start MD [ft]	End MD [ft]	Positional Uncertainty Model	Log Name/Comment	Wellbore
17.00	11747.74	NaviTrak (MAGCORR,IFR)		BURKHARDT 35N-3HZ PWB



Planned Wellpath Report

BURKHARDT 35N-3HZ (PERMIT REV-1) PWP

Page 6 of 6



REFERENCE WELLPATH IDENTIFICATION

Operator	KERR-MCGEE OIL & GAS ONSHORE LP	Slot	SLOT#03 BURKHARDT 35N-3HZ (420'FNL & 1210'FWL, SEC.
Area	COLORADO	Well	BURKHARDT 35N-3HZ
Field	WELD COUNTY (KERR MCGEE)	Wellbore	BURKHARDT 35N-3HZ PWB
Facility	SEC.03-T1N-R66W		

WELLPATH COMMENTS

MD [ft]	Inclination [°]	Azimuth [°]	TVD [ft]	Comment
1490.00	0.000	349.000	1490.00	FOX HILLS MARKER
4077.67	4.053	349.000	4048.00	PARKMAN
4617.84	0.000	179.117	4588.00	SUSSEX
7222.67	47.579	179.117	7140.00	SHARON SPRINGS
7294.48	54.761	179.117	7185.00	NIOBRARA A
7460.66	71.379	179.117	7260.00	NIOBRARA B

DESIGN COMMENTS

MD [ft]	Inclination [°]	Azimuth [°]	TVD [ft]	Comment
17.00	0.000	349.000	17.00	TIE ON
1650.00	0.000	349.000	1650.00	BEGIN NUDGE
2150.00	10.000	349.000	2147.47	END NUDGE
3780.30	10.000	349.000	3753.00	BEGIN DROP
4280.30	0.000	179.117	4250.47	END DROP
6746.87	0.000	179.117	6717.04	KOP, BUILD @ 10°/100'
7648.27	90.140	179.117	7289.99	LANDING POINT
11747.74	90.140	179.117	7280.00	TOTAL DEPTH