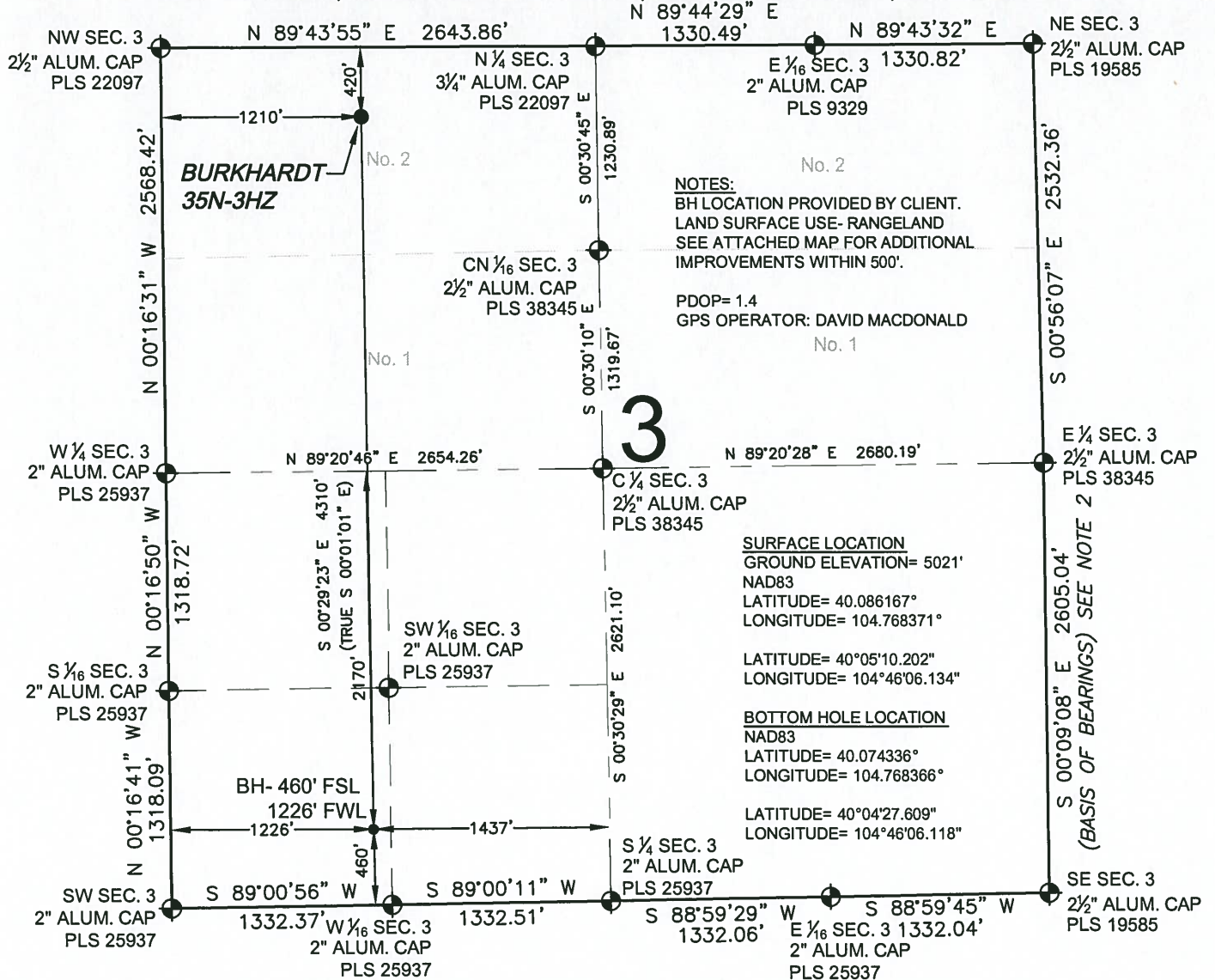


# WELL LOCATION CERTIFICATE: BURKHARDT 35N-3HZ

SECTION 3, TOWNSHIP 1 NORTH, RANGE 66 WEST, 6TH P.M.



**NOTES:**  
 BH LOCATION PROVIDED BY CLIENT.  
 LAND SURFACE USE- RANGELAND  
 SEE ATTACHED MAP FOR ADDITIONAL  
 IMPROVEMENTS WITHIN 500'.  
 PDOP= 1.4  
 GPS OPERATOR: DAVID MACDONALD

**SURFACE LOCATION**  
 GROUND ELEVATION= 5021'  
 NAD83  
 LATITUDE= 40.086167°  
 LONGITUDE= 104.768371°

**BOTTOM HOLE LOCATION**  
 NAD83  
 LATITUDE= 40.074336°  
 LONGITUDE= 104.768366°  
 LATITUDE= 40°04'27.609"  
 LONGITUDE= 104°46'06.118"

WELL BURKHARDT 35N-3HZ TO BE LOCATED 420' FNL AND 1210' FWL

**LEGEND**

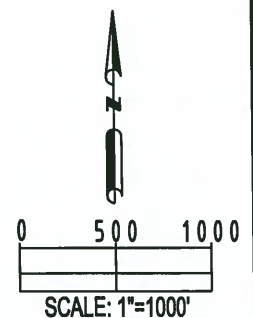
- ⊕ = EXISTING MONUMENT
- ⊙ = PROPOSED WELL
- BH = BOTTOM HOLE
- ⊕ = BOTTOM HOLE
- ⊙ = EXISTING WELL

**NOTES:**

1. THIS FIELD SURVEY CONFORMS TO THE MINIMUM STANDARDS SET BY THE C.O.G.C.C., RULE NO. 215
2. BEARINGS AND DISTANCE SHOWN HEREON ARE GRID AND BASED ON THE COLORADO STATE PLANE COORDINATE SYSTEM, NAD 83/2011 BETWEEN MONUMENTS AS LABELED HEREON AND ELEVATIONS SHOWN ARE NAVD 88, AS DERIVED BY GPS OBSERVATIONS.
3. GRID DISTANCES ARE SHOWN, AS MEASURED IN THE FIELD, WITH TIES TO WELLS MEASURED PERPENDICULAR TO SECTION LINES.

I, BRADLEY L. LAMAN, A LICENSED PROFESSIONAL LAND SURVEYOR IN THE STATE OF COLORADO DO HEREBY CERTIFY TO **KERR-MCGEE OIL & GAS ONSHORE LP**, THAT THE SURVEY AND WELL LOCATION CERTIFICATE SHOWN HEREON WERE DONE BY ME OR UNDER MY DIRECT SUPERVISION AND THAT THE DRAWING SHOWN HEREON ACCURATELY DEPICTS THE PROPOSED LOCATION OF THE WELL. THIS CERTIFICATE DOES NOT REPRESENT A LAND SURVEY PLAT OR IMPROVEMENT SURVEY PLAT AS DEFINED BY C.R.S. 38-51-102 AND CANNOT BE RELIED UPON TO DETERMINE OWNERSHIP.

BRADLEY L. LAMAN, PLS 38345  
 COLORADO LICENSED PROFESSIONAL LAND SURVEYOR  
 FOR AND ON BEHALF OF P.F.S., LLC



PREPARED BY: <b>PFS</b> Petroleum Field Services, LLC 7535 Hilltop Circle Denver, CO 80221	FIELD DATE: 09-11-13	SURFACE LOCATION: LOT 2, NW 1/4, SEC. 3, T1N, R66W, 6TH P.M. WELD COUNTY, COLORADO
	DRAWING DATE: 09-17-13	BY: SMF CHECKED: KAD

NOTICE: ACCORDING TO COLORADO LAW YOU MUST COMMENCE ANY LEGAL ACTION BASED UPON ANY DEFECT IN THIS SURVEY WITHIN THREE YEARS AFTER YOU FIRST DISCOVER SUCH DEFECT. IN NO EVENT MAY ANY ACTION BASED UPON ANY DEFECT IN THIS SURVEY BE COMMENCED MORE THAN TEN YEARS FROM THIS SAID DATE OF THIS CERTIFICATION SHOWN HEREON.