

KERR-MCGEE OIL & GAS ONSHORE LP

Location: COLORADO Slot: SLOT#29 NRC 26N-5HZ (500'FNL & 1230'FEL, SEC.08)
Field: WELD COUNTY (KERR MCGEE) Well: NRC 26N-5HZ
Facility: SEC.08-T1N-R67W Wellbore: NRC 26N-5HZ PWB

Plot reference wellpath is NRC 26N-5HZ (PERMIT REV-1) PWP

True vertical depths are referenced to Rig on SLOT#29 NRC 26N-5HZ (500'FNL & 1230'FEL, SEC.08) (RKB)	Grid System: NAD83 / Lambert Colorado SP, Northern Zone (501), US feet
Measured depths are referenced to Rig on SLOT#29 NRC 26N-5HZ (500'FNL & 1230'FEL, SEC.08) (RKB)	North Reference: True north
Rig on SLOT#29 NRC 26N-5HZ (500'FNL & 1230'FEL, SEC.08) (RKB) to Mean Sea Level: 5026 feet	Scale: True distance
Mean Sea Level to Mud line (At Slot: SLOT#29 NRC 26N-5HZ (500'FNL & 1230'FEL, SEC.08)): 0 feet	Depths are in feet
Coordinates are in feet referenced to Slot	Created by: wlljg02 on 12/20/2013

Location Information

Facility Name	Grid East (US ft)	Grid North (US ft)	Latitude	Longitude
SEC.08-T1N-R67W	3165100.027	1265676.420	40°03'40.190"N	104°54'36.529"W
Slot	Local N (ft)	Local E (ft)	Grid East (US ft)	Grid North (US ft)
SLOT#29 NRC 26N-5HZ (500'FNL & 1230'FEL, SEC.08)	3736.21	177.95	3165253.116	1269413.582
Rig on SLOT#29 NRC 26N-5HZ (500'FNL & 1230'FEL, SEC.08) (RKB) to Mud line (At Slot: SLOT#29 NRC 26N-5HZ (500'FNL & 1230'FEL, SEC.08))				5026ft
Mean Sea Level to Mud line (At Slot: SLOT#29 NRC 26N-5HZ (500'FNL & 1230'FEL, SEC.08))				0ft
Rig on SLOT#29 NRC 26N-5HZ (500'FNL & 1230'FEL, SEC.08) (RKB) to Mean Sea Level				5026ft

Survey Program

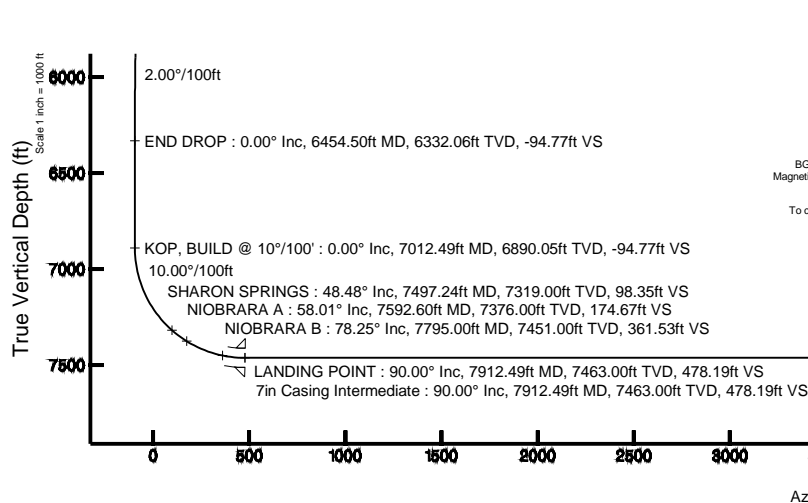
Start MD (ft)	End MD (ft)	Tool	Model	Log Name/Comment	Wellbore
17.00	7912.49	NaviTrak	NaviTrak (Standard)		NRC 26N-5HZ PWB
7912.49	12850.41	NaviTrak	NaviTrak (Standard)		NRC 26N-5HZ PWB

Well Profile Data

Design Comment	MD (ft)	Inc (°)	Az (°)	TVD (ft)	Local N (ft)	Local E (ft)	DLS (°/100ft)	VS (ft)
TIE-ON	17.00	0.000	94.490	17.00	0.00	0.00	0.00	0.00
BEGIN NUDGE	1400.00	0.000	94.490	1400.00	0.00	0.00	0.00	0.00
END NUDGE	2100.00	14.000	94.490	2093.06	-6.66	84.84	2.00	-7.65
BEGIN DROP	5754.50	14.000	94.490	5639.00	-75.87	966.23	0.00	-87.12
END DROP	6454.50	0.000	359.333	6332.06	-82.54	1051.06	2.00	-94.77
KOP, BUILD @ 10°/100'	7012.49	0.000	359.333	6890.05	-82.54	1051.06	0.00	-94.77
LANDING POINT	7912.49	90.000	359.333	7463.00	490.39	1044.39	10.00	478.19
TOTAL DEPTH	12850.41	90.000	359.333	7463.00	5427.97	986.92	0.00	5416.11

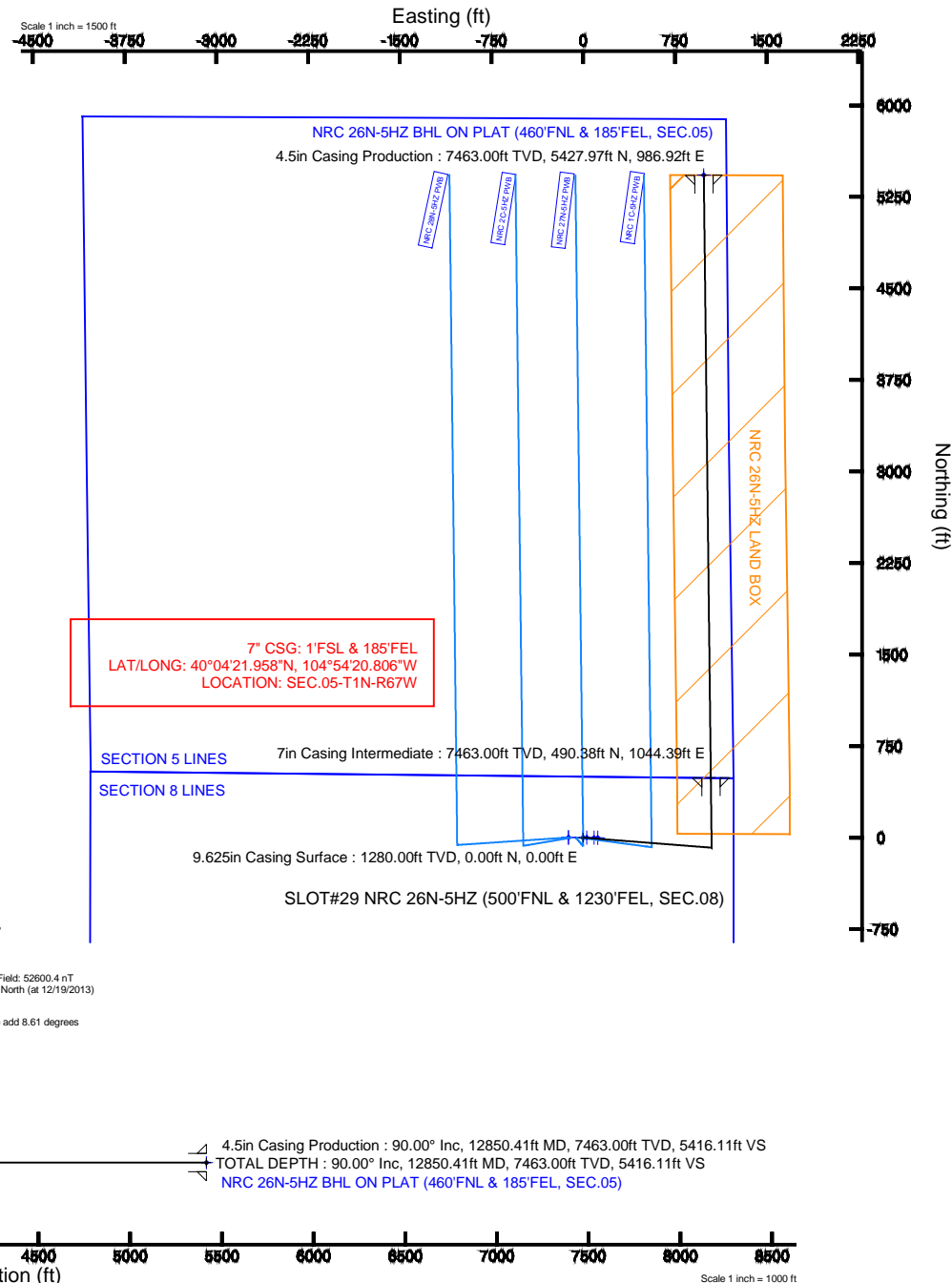
Targets

Name	MD (ft)	TVD (ft)	Local N (ft)	Local E (ft)	Grid East (US ft)	Grid North (US ft)	Latitude	Longitude
NRC 26N-5HZ BHL ON PLAT (460'FNL & 185'FEL, SEC.05)	12850.41	7463.00	5427.97	986.92	3165203.83	1274847.78	40°05'10.752"N	104°54'21.542"W
NRC 26N-5HZ LAND BOX		7500.00	0.00	0.00	3165253.12	1269413.58	40°04'17.112"N	104°54'34.240"W
NRC SECTION 5 LINES		7500.00	1.11	-120.03	3165913.08	1269413.90	40°04'17.123"N	104°54'35.784"W
NRC SECTION 8 LINES		7500.00	1.11	-120.03	3165913.08	1269413.90	40°04'17.123"N	104°54'35.784"W



BGGM (1945.0 to 2015.0) Dip: 66.66° Field: 52600.4 nT
Magnetic North is 8.61 degrees East of True North (at 12/19/2013)

To correct azimuth from Magnetic to True add 8.61 degrees





Planned Wellpath Report

NRC 26N-5HZ (PERMIT REV-1) PWP

Page 1 of 6



REFERENCE WELLPATH IDENTIFICATION

Operator	KERR-MCGEE OIL & GAS ONSHORE LP	Slot	SLOT#29 NRC 26N-5HZ (500'FNL & 1230'FEL, SEC.08)
Area	COLORADO	Well	NRC 26N-5HZ
Field	WELD COUNTY (KERR MCGEE)	Wellbore	NRC 26N-5HZ PWB
Facility	SEC.08-T1N-R67W		

REPORT SETUP INFORMATION

Projection System	NAD83 / Lambert Colorado SP, Northern Zone (501), US feet	Software System	WellArchitect® 4.0.0
North Reference	True	User	Wilsjef02
Scale	0.999962	Report Generated	12/20/2013 at 10:14:14
Convergence at slot	n/a	Database/Source file	WellArchitectDB/NRC_26N-5HZ_PWB.xml

WELLPATH LOCATION

	Local coordinates		Grid coordinates		Geographic coordinates	
	North[ft]	East[ft]	Easting[US ft]	Northing[US ft]	Latitude	Longitude
Slot Location	3736.21	177.95	3165253.12	1269413.58	40°04'17.112"N	104°54'34.240"W
Facility Reference Pt			3165100.03	1265676.42	40°03'40.190"N	104°54'36.529"W
Field Reference Pt			3197771.84	1268891.29	40°04'09.600"N	104°47'36.000"W

WELLPATH DATUM

Calculation method	Minimum curvature	Rig on SLOT#29 NRC 26N-5HZ (500'FNL & 1230'FEL, SEC.08) (RKB) to Facility Vertical Datum	5026.00ft
Horizontal Reference Pt	Slot	Rig on SLOT#29 NRC 26N-5HZ (500'FNL & 1230'FEL, SEC.08) (RKB) to Mean Sea Level	5026.00ft
Vertical Reference Pt	Rig on SLOT#29 NRC 26N-5HZ (500'FNL & 1230'FEL, SEC.08) (RKB)	Rig on SLOT#29 NRC 26N-5HZ (500'FNL & 1230'FEL, SEC.08) (RKB) to Mud Line at Slot (SLOT#29 NRC 26N-5HZ (500'FNL & 1230'FEL, SEC.08))	5026.00ft
MD Reference Pt	Rig on SLOT#29 NRC 26N-5HZ (500'FNL & 1230'FEL, SEC.08) (RKB)	Section Origin	N 0.00, E 0.00 ft
Field Vertical Reference	Mean Sea Level	Section Azimuth	359.33°



Planned Wellpath Report

NRC 26N-5HZ (PERMIT REV-1) PWP

Page 2 of 6



REFERENCE WELLPATH IDENTIFICATION

Operator	KERR-MCGEE OIL & GAS ONSHORE LP	Slot	SLOT#29 NRC 26N-5HZ (500'FNL & 1230'FEL, SEC.08)
Area	COLORADO	Well	NRC 26N-5HZ
Field	WELD COUNTY (KERR MCGEE)	Wellbore	NRC 26N-5HZ PWB
Facility	SEC.08-T1N-R67W		

WELLPATH DATA (142 stations) † = interpolated/extrapolated station

MD [ft]	Inclination [°]	Azimuth [°]	TVD [ft]	Vert Sect [ft]	North [ft]	East [ft]	Latitude	Longitude	DLS [°/100ft]	Comments
0.00†	0.000	94.490	0.00	0.00	0.00	0.00	40°04'17.112"N	104°54'34.240"W	0.00	
17.00	0.000	94.490	17.00	0.00	0.00	0.00	40°04'17.112"N	104°54'34.240"W	0.00	TIE-ON
117.00†	0.000	94.490	117.00	0.00	0.00	0.00	40°04'17.112"N	104°54'34.240"W	0.00	
217.00†	0.000	94.490	217.00	0.00	0.00	0.00	40°04'17.112"N	104°54'34.240"W	0.00	
317.00†	0.000	94.490	317.00	0.00	0.00	0.00	40°04'17.112"N	104°54'34.240"W	0.00	
417.00†	0.000	94.490	417.00	0.00	0.00	0.00	40°04'17.112"N	104°54'34.240"W	0.00	
517.00†	0.000	94.490	517.00	0.00	0.00	0.00	40°04'17.112"N	104°54'34.240"W	0.00	
617.00†	0.000	94.490	617.00	0.00	0.00	0.00	40°04'17.112"N	104°54'34.240"W	0.00	
717.00†	0.000	94.490	717.00	0.00	0.00	0.00	40°04'17.112"N	104°54'34.240"W	0.00	
817.00†	0.000	94.490	817.00	0.00	0.00	0.00	40°04'17.112"N	104°54'34.240"W	0.00	
917.00†	0.000	94.490	917.00	0.00	0.00	0.00	40°04'17.112"N	104°54'34.240"W	0.00	
1017.00†	0.000	94.490	1017.00	0.00	0.00	0.00	40°04'17.112"N	104°54'34.240"W	0.00	
1117.00†	0.000	94.490	1117.00	0.00	0.00	0.00	40°04'17.112"N	104°54'34.240"W	0.00	
1217.00†	0.000	94.490	1217.00	0.00	0.00	0.00	40°04'17.112"N	104°54'34.240"W	0.00	
1317.00†	0.000	94.490	1317.00	0.00	0.00	0.00	40°04'17.112"N	104°54'34.240"W	0.00	
1400.00	0.000	94.490	1400.00	0.00	0.00	0.00	40°04'17.112"N	104°54'34.240"W	0.00	BEGIN NUDGE
1417.00†	0.340	94.490	1417.00	0.00	0.00	0.05	40°04'17.112"N	104°54'34.239"W	2.00	
1517.00†	2.340	94.490	1516.97	-0.21	-0.19	2.38	40°04'17.110"N	104°54'34.209"W	2.00	
1617.00†	4.340	94.490	1616.79	-0.74	-0.64	8.19	40°04'17.106"N	104°54'34.135"W	2.00	
1717.00†	6.340	94.490	1716.35	-1.57	-1.37	17.47	40°04'17.098"N	104°54'34.015"W	2.00	
1817.00†	8.340	94.490	1815.53	-2.72	-2.37	30.20	40°04'17.089"N	104°54'33.851"W	2.00	
1917.00†	10.340	94.490	1914.20	-4.18	-3.64	46.38	40°04'17.076"N	104°54'33.643"W	2.00	
2017.00†	12.340	94.490	2012.24	-5.95	-5.18	65.98	40°04'17.061"N	104°54'33.391"W	2.00	
2100.00	14.000	94.490	2093.06	-7.65	-6.66	84.84	40°04'17.046"N	104°54'33.149"W	2.00	END NUDGE
2117.00†	14.000	94.490	2109.55	-8.02	-6.98	88.94	40°04'17.043"N	104°54'33.096"W	0.00	
2217.00†	14.000	94.490	2206.58	-10.19	-8.88	113.05	40°04'17.024"N	104°54'32.786"W	0.00	
2317.00†	14.000	94.490	2303.61	-12.37	-10.77	137.17	40°04'17.006"N	104°54'32.476"W	0.00	
2417.00†	14.000	94.490	2400.64	-14.54	-12.67	161.29	40°04'16.987"N	104°54'32.165"W	0.00	
2517.00†	14.000	94.490	2497.67	-16.72	-14.56	185.41	40°04'16.968"N	104°54'31.855"W	0.00	
2617.00†	14.000	94.490	2594.70	-18.89	-16.45	209.53	40°04'16.949"N	104°54'31.545"W	0.00	
2717.00†	14.000	94.490	2691.73	-21.07	-18.35	233.64	40°04'16.931"N	104°54'31.235"W	0.00	
2817.00†	14.000	94.490	2788.76	-23.24	-20.24	257.76	40°04'16.912"N	104°54'30.924"W	0.00	
2917.00†	14.000	94.490	2885.79	-25.41	-22.13	281.88	40°04'16.893"N	104°54'30.614"W	0.00	
3017.00†	14.000	94.490	2982.82	-27.59	-24.03	306.00	40°04'16.875"N	104°54'30.304"W	0.00	
3117.00†	14.000	94.490	3079.85	-29.76	-25.92	330.11	40°04'16.856"N	104°54'29.994"W	0.00	
3217.00†	14.000	94.490	3176.88	-31.94	-27.82	354.23	40°04'16.837"N	104°54'29.683"W	0.00	
3317.00†	14.000	94.490	3273.91	-34.11	-29.71	378.35	40°04'16.818"N	104°54'29.373"W	0.00	
3417.00†	14.000	94.490	3370.93	-36.29	-31.60	402.47	40°04'16.800"N	104°54'29.063"W	0.00	
3517.00†	14.000	94.490	3467.96	-38.46	-33.50	426.59	40°04'16.781"N	104°54'28.753"W	0.00	
3617.00†	14.000	94.490	3564.99	-40.64	-35.39	450.70	40°04'16.762"N	104°54'28.443"W	0.00	
3717.00†	14.000	94.490	3662.02	-42.81	-37.29	474.82	40°04'16.743"N	104°54'28.132"W	0.00	
3817.00†	14.000	94.490	3759.05	-44.99	-39.18	498.94	40°04'16.725"N	104°54'27.822"W	0.00	
3917.00†	14.000	94.490	3856.08	-47.16	-41.07	523.06	40°04'16.706"N	104°54'27.512"W	0.00	
4017.00†	14.000	94.490	3953.11	-49.33	-42.97	547.18	40°04'16.687"N	104°54'27.202"W	0.00	
4117.00†	14.000	94.490	4050.14	-51.51	-44.86	571.29	40°04'16.669"N	104°54'26.891"W	0.00	



Planned Wellpath Report

NRC 26N-5HZ (PERMIT REV-1) PWP

Page 3 of 6



REFERENCE WELLPATH IDENTIFICATION

Operator	KERR-MCGEE OIL & GAS ONSHORE LP	Slot	SLOT#29 NRC 26N-5HZ (500'FNL & 1230'FEL, SEC.08)
Area	COLORADO	Well	NRC 26N-5HZ
Field	WELD COUNTY (KERR MCGEE)	Wellbore	NRC 26N-5HZ PWB
Facility	SEC.08-T1N-R67W		

WELLPATH DATA (142 stations) † = interpolated/extrapolated station

MD [ft]	Inclination [°]	Azimuth [°]	TVD [ft]	Vert Sect [ft]	North [ft]	East [ft]	Latitude	Longitude	DLS [°/100ft]	Comments
4217.00†	14.000	94.490	4147.17	-53.68	-46.76	595.41	40°04'16.650"N	104°54'26.581"W	0.00	
4286.91†	14.000	94.490	4215.00	-55.20	-48.08	612.27	40°04'16.637"N	104°54'26.364"W	0.00	PARKMAN
4317.00†	14.000	94.490	4244.20	-55.86	-48.65	619.53	40°04'16.631"N	104°54'26.271"W	0.00	
4417.00†	14.000	94.490	4341.23	-58.03	-50.54	643.65	40°04'16.612"N	104°54'25.961"W	0.00	
4517.00†	14.000	94.490	4438.26	-60.21	-52.44	667.77	40°04'16.594"N	104°54'25.651"W	0.00	
4617.00†	14.000	94.490	4535.29	-62.38	-54.33	691.88	40°04'16.575"N	104°54'25.340"W	0.00	
4632.16†	14.000	94.490	4550.00	-62.71	-54.62	695.54	40°04'16.572"N	104°54'25.293"W	0.00	SUSSEX
4717.00†	14.000	94.490	4632.32	-64.56	-56.22	716.00	40°04'16.556"N	104°54'25.030"W	0.00	
4817.00†	14.000	94.490	4729.35	-66.73	-58.12	740.12	40°04'16.538"N	104°54'24.720"W	0.00	
4917.00†	14.000	94.490	4826.38	-68.91	-60.01	764.24	40°04'16.519"N	104°54'24.410"W	0.00	
5017.00†	14.000	94.490	4923.41	-71.08	-61.91	788.36	40°04'16.500"N	104°54'24.099"W	0.00	
5117.00†	14.000	94.490	5020.44	-73.25	-63.80	812.47	40°04'16.481"N	104°54'23.789"W	0.00	
5217.00†	14.000	94.490	5117.47	-75.43	-65.69	836.59	40°04'16.463"N	104°54'23.479"W	0.00	
5317.00†	14.000	94.490	5214.50	-77.60	-67.59	860.71	40°04'16.444"N	104°54'23.169"W	0.00	
5417.00†	14.000	94.490	5311.53	-79.78	-69.48	884.83	40°04'16.425"N	104°54'22.858"W	0.00	
5517.00†	14.000	94.490	5408.56	-81.95	-71.38	908.95	40°04'16.406"N	104°54'22.548"W	0.00	
5617.00†	14.000	94.490	5505.59	-84.13	-73.27	933.06	40°04'16.388"N	104°54'22.238"W	0.00	
5717.00†	14.000	94.490	5602.61	-86.30	-75.16	957.18	40°04'16.369"N	104°54'21.928"W	0.00	
5754.50	14.000	94.490	5639.00	-87.12	-75.87	966.23	40°04'16.362"N	104°54'21.811"W	0.00	BEGIN DROP
5817.00†	12.750	94.490	5699.80	-88.42	-77.01	980.64	40°04'16.351"N	104°54'21.626"W	2.00	
5917.00†	10.750	94.490	5797.70	-90.25	-78.60	1000.94	40°04'16.335"N	104°54'21.365"W	2.00	
6017.00†	8.750	94.490	5896.25	-91.77	-79.93	1017.82	40°04'16.322"N	104°54'21.148"W	2.00	
6117.00†	6.750	94.490	5995.34	-92.98	-80.98	1031.26	40°04'16.312"N	104°54'20.975"W	2.00	
6217.00†	4.750	94.490	6094.83	-93.88	-81.77	1041.25	40°04'16.304"N	104°54'20.846"W	2.00	
6317.00†	2.750	94.490	6194.61	-94.47	-82.28	1047.77	40°04'16.299"N	104°54'20.763"W	2.00	
6417.00†	0.750	94.490	6294.56	-94.74	-82.52	1050.82	40°04'16.296"N	104°54'20.723"W	2.00	
6454.50	0.000	359.333	6332.06	-94.77	-82.54	1051.06	40°04'16.296"N	104°54'20.720"W	2.00	END DROP
6517.00†	0.000	359.333	6394.56	-94.77	-82.54	1051.06	40°04'16.296"N	104°54'20.720"W	0.00	
6617.00†	0.000	359.333	6494.56	-94.77	-82.54	1051.06	40°04'16.296"N	104°54'20.720"W	0.00	
6717.00†	0.000	359.333	6594.56	-94.77	-82.54	1051.06	40°04'16.296"N	104°54'20.720"W	0.00	
6817.00†	0.000	359.333	6694.56	-94.77	-82.54	1051.06	40°04'16.296"N	104°54'20.720"W	0.00	
6917.00†	0.000	359.333	6794.56	-94.77	-82.54	1051.06	40°04'16.296"N	104°54'20.720"W	0.00	
7012.49	0.000	359.333	6890.05	-94.77	-82.54	1051.06	40°04'16.296"N	104°54'20.720"W	0.00	KOP, BUILD @ 10°/100'
7017.00†	0.451	359.333	6894.56	-94.75	-82.52	1051.06	40°04'16.296"N	104°54'20.720"W	10.00	
7117.00†	10.451	359.333	6993.98	-85.26	-73.03	1050.95	40°04'16.390"N	104°54'20.722"W	10.00	
7217.00†	20.451	359.333	7090.24	-58.65	-46.43	1050.64	40°04'16.653"N	104°54'20.726"W	10.00	
7317.00†	30.451	359.333	7180.42	-15.73	-3.51	1050.14	40°04'17.077"N	104°54'20.732"W	10.00	
7417.00†	40.451	359.333	7261.78	42.19	54.41	1049.47	40°04'17.650"N	104°54'20.741"W	10.00	
7497.24†	48.475	359.333	7319.00	98.35	110.57	1048.81	40°04'18.204"N	104°54'20.749"W	10.00	SHARON SPRINGS
7517.00†	50.451	359.333	7331.84	113.37	125.58	1048.64	40°04'18.353"N	104°54'20.751"W	10.00	
7592.60†	58.011	359.333	7376.00	174.67	186.88	1047.92	40°04'18.959"N	104°54'20.760"W	10.00	NIOBRARA A
7617.00†	60.451	359.333	7388.48	195.63	207.84	1047.68	40°04'19.166"N	104°54'20.764"W	10.00	
7717.00†	70.451	359.333	7429.98	286.47	298.68	1046.62	40°04'20.063"N	104°54'20.777"W	10.00	
7795.00†	78.252	359.333	7451.00	361.53	373.73	1045.75	40°04'20.805"N	104°54'20.788"W	10.00	NIOBRARA B
7817.00†	80.451	359.333	7455.06	383.14	395.34	1045.50	40°04'21.019"N	104°54'20.792"W	10.00	



Planned Wellpath Report

NRC 26N-5HZ (PERMIT REV-1) PWP

Page 4 of 6



REFERENCE WELLPATH IDENTIFICATION

Operator	KERR-MCGEE OIL & GAS ONSHORE LP	Slot	SLOT#29 NRC 26N-5HZ (500'FNL & 1230'FEL, SEC.08)
Area	COLORADO	Well	NRC 26N-5HZ
Field	WELD COUNTY (KERR MCGEE)	Wellbore	NRC 26N-5HZ PWB
Facility	SEC.08-T1N-R67W		

WELLPATH DATA (142 stations) † = interpolated/extrapolated station

MD [ft]	Inclination [°]	Azimuth [°]	TVD [ft]	Vert Sect [ft]	North [ft]	East [ft]	Latitude	Longitude	DLS [°/100ft]	Comments
7912.49	90.000	359.333	7463.00	478.19	490.39	1044.39	40°04'21.958"N	104°54'20.806"W	10.00	LANDING POINT
7917.00†	90.000	359.333	7463.00	482.70	494.89	1044.34	40°04'22.002"N	104°54'20.806"W	0.00	
8017.00†	90.000	359.333	7463.00	582.70	594.89	1043.17	40°04'22.991"N	104°54'20.821"W	0.00	
8117.00†	90.000	359.333	7463.00	682.70	694.88	1042.01	40°04'23.979"N	104°54'20.836"W	0.00	
8217.00†	90.000	359.333	7463.00	782.70	794.87	1040.85	40°04'24.967"N	104°54'20.851"W	0.00	
8317.00†	90.000	359.333	7463.00	882.70	894.87	1039.68	40°04'25.955"N	104°54'20.866"W	0.00	
8417.00†	90.000	359.333	7463.00	982.70	994.86	1038.52	40°04'26.943"N	104°54'20.881"W	0.00	
8517.00†	90.000	359.333	7463.00	1082.70	1094.85	1037.35	40°04'27.931"N	104°54'20.896"W	0.00	
8617.00†	90.000	359.333	7463.00	1182.70	1194.85	1036.19	40°04'28.919"N	104°54'20.911"W	0.00	
8717.00†	90.000	359.333	7463.00	1282.70	1294.84	1035.03	40°04'29.908"N	104°54'20.926"W	0.00	
8817.00†	90.000	359.333	7463.00	1382.70	1394.83	1033.86	40°04'30.896"N	104°54'20.941"W	0.00	
8917.00†	90.000	359.333	7463.00	1482.70	1494.83	1032.70	40°04'31.884"N	104°54'20.956"W	0.00	
9017.00†	90.000	359.333	7463.00	1582.70	1594.82	1031.53	40°04'32.872"N	104°54'20.970"W	0.00	
9117.00†	90.000	359.333	7463.00	1682.70	1694.81	1030.37	40°04'33.860"N	104°54'20.985"W	0.00	
9217.00†	90.000	359.333	7463.00	1782.70	1794.81	1029.21	40°04'34.848"N	104°54'21.000"W	0.00	
9317.00†	90.000	359.333	7463.00	1882.70	1894.80	1028.04	40°04'35.837"N	104°54'21.015"W	0.00	
9417.00†	90.000	359.333	7463.00	1982.70	1994.79	1026.88	40°04'36.825"N	104°54'21.030"W	0.00	
9517.00†	90.000	359.333	7463.00	2082.70	2094.79	1025.71	40°04'37.813"N	104°54'21.045"W	0.00	
9617.00†	90.000	359.333	7463.00	2182.70	2194.78	1024.55	40°04'38.801"N	104°54'21.060"W	0.00	
9717.00†	90.000	359.333	7463.00	2282.70	2294.77	1023.39	40°04'39.789"N	104°54'21.075"W	0.00	
9817.00†	90.000	359.333	7463.00	2382.70	2394.77	1022.22	40°04'40.777"N	104°54'21.090"W	0.00	
9917.00†	90.000	359.333	7463.00	2482.70	2494.76	1021.06	40°04'41.765"N	104°54'21.105"W	0.00	
10017.00†	90.000	359.333	7463.00	2582.70	2594.75	1019.89	40°04'42.754"N	104°54'21.120"W	0.00	
10117.00†	90.000	359.333	7463.00	2682.70	2694.74	1018.73	40°04'43.742"N	104°54'21.135"W	0.00	
10217.00†	90.000	359.333	7463.00	2782.70	2794.74	1017.57	40°04'44.730"N	104°54'21.150"W	0.00	
10317.00†	90.000	359.333	7463.00	2882.70	2894.73	1016.40	40°04'45.718"N	104°54'21.164"W	0.00	
10417.00†	90.000	359.333	7463.00	2982.70	2994.72	1015.24	40°04'46.706"N	104°54'21.179"W	0.00	
10517.00†	90.000	359.333	7463.00	3082.70	3094.72	1014.08	40°04'47.694"N	104°54'21.194"W	0.00	
10617.00†	90.000	359.333	7463.00	3182.70	3194.71	1012.91	40°04'48.683"N	104°54'21.209"W	0.00	
10717.00†	90.000	359.333	7463.00	3282.70	3294.70	1011.75	40°04'49.671"N	104°54'21.224"W	0.00	
10817.00†	90.000	359.333	7463.00	3382.70	3394.70	1010.58	40°04'50.659"N	104°54'21.239"W	0.00	
10917.00†	90.000	359.333	7463.00	3482.70	3494.69	1009.42	40°04'51.647"N	104°54'21.254"W	0.00	
11017.00†	90.000	359.333	7463.00	3582.70	3594.68	1008.26	40°04'52.635"N	104°54'21.269"W	0.00	
11117.00†	90.000	359.333	7463.00	3682.70	3694.68	1007.09	40°04'53.623"N	104°54'21.284"W	0.00	
11217.00†	90.000	359.333	7463.00	3782.70	3794.67	1005.93	40°04'54.611"N	104°54'21.299"W	0.00	
11317.00†	90.000	359.333	7463.00	3882.70	3894.66	1004.77	40°04'55.600"N	104°54'21.314"W	0.00	
11417.00†	90.000	359.333	7463.00	3982.70	3994.66	1003.60	40°04'56.588"N	104°54'21.329"W	0.00	
11517.00†	90.000	359.333	7463.00	4082.70	4094.65	1002.44	40°04'57.576"N	104°54'21.343"W	0.00	
11617.00†	90.000	359.333	7463.00	4182.70	4194.64	1001.27	40°04'58.564"N	104°54'21.358"W	0.00	
11717.00†	90.000	359.333	7463.00	4282.70	4294.64	1000.11	40°04'59.552"N	104°54'21.373"W	0.00	
11817.00†	90.000	359.333	7463.00	4382.70	4394.63	998.95	40°05'00.540"N	104°54'21.388"W	0.00	
11917.00†	90.000	359.333	7463.00	4482.70	4494.62	997.78	40°05'01.529"N	104°54'21.403"W	0.00	
12017.00†	90.000	359.333	7463.00	4582.70	4594.62	996.62	40°05'02.517"N	104°54'21.418"W	0.00	
12117.00†	90.000	359.333	7463.00	4682.70	4694.61	995.46	40°05'03.505"N	104°54'21.433"W	0.00	
12217.00†	90.000	359.333	7463.00	4782.70	4794.60	994.29	40°05'04.493"N	104°54'21.448"W	0.00	



Planned Wellpath Report

NRC 26N-5HZ (PERMIT REV-1) PWP

Page 5 of 6



REFERENCE WELLPATH IDENTIFICATION

Operator	KERR-MCGEE OIL & GAS ONSHORE LP	Slot	SLOT#29 NRC 26N-5HZ (500'FNL & 1230'FEL, SEC.08)
Area	COLORADO	Well	NRC 26N-5HZ
Field	WELD COUNTY (KERR MCGEE)	Wellbore	NRC 26N-5HZ PWB
Facility	SEC.08-T1N-R67W		

WELLPATH DATA (142 stations) † = interpolated/extrapolated station

MD [ft]	Inclination [°]	Azimuth [°]	TVD [ft]	Vert Sect [ft]	North [ft]	East [ft]	Latitude	Longitude	DLS [°/100ft]	Comments
12317.00†	90.000	359.333	7463.00	4882.70	4894.60	993.13	40°05'05.481"N	104°54'21.463"W	0.00	
12417.00†	90.000	359.333	7463.00	4982.70	4994.59	991.96	40°05'06.469"N	104°54'21.478"W	0.00	
12517.00†	90.000	359.333	7463.00	5082.70	5094.58	990.80	40°05'07.457"N	104°54'21.493"W	0.00	
12617.00†	90.000	359.333	7463.00	5182.70	5194.58	989.64	40°05'08.446"N	104°54'21.508"W	0.00	
12717.00†	90.000	359.333	7463.00	5282.70	5294.57	988.47	40°05'09.434"N	104°54'21.522"W	0.00	
12817.00†	90.000	359.333	7463.00	5382.70	5394.56	987.31	40°05'10.422"N	104°54'21.537"W	0.00	
12850.41	90.000	359.333	7463.00 ¹	5416.11	5427.97	986.92	40°05'10.752"N	104°54'21.542"W	0.00	TOTAL DEPTH

HOLE & CASING SECTIONS - Ref Wellbore: NRC 26N-5HZ PWB Ref Wellpath: NRC 26N-5HZ (PERMIT REV-1) PWP

String/Diameter	Start MD [ft]	End MD [ft]	Interval [ft]	Start TVD [ft]	End TVD [ft]	Start N/S [ft]	Start E/W [ft]	End N/S [ft]	End E/W [ft]
13.5in Open Hole	17.00	1280.00	1263.00	17.00	1280.00	0.00	0.00	0.00	0.00
9.625in Casing Surface	17.00	1280.00	1263.00	17.00	1280.00	0.00	0.00	0.00	0.00
8.75in Open Hole	1280.00	7912.49	6632.49	1280.00	7463.00	0.00	0.00	490.38	1044.39
7in Casing Intermediate	17.00	7912.49	7895.49	17.00	7463.00	0.00	0.00	490.38	1044.39
6.125in Open Hole	7912.49	12850.41	4937.92	7463.00	7463.00	490.38	1044.39	5427.97	986.92
4.5in Casing Production	17.00	12850.41	12833.41	17.00	7463.00	0.00	0.00	5427.97	986.92

TARGETS

Name	MD [ft]	TVD [ft]	North [ft]	East [ft]	Grid East [US ft]	Grid North [US ft]	Latitude	Longitude	Shape
1) NRC 26N-5HZ BHL ON PLAT (460'FNL & 185'FEL, SEC.05)	12850.41	7463.00	5427.97	986.92	3166203.83	1274847.78	40°05'10.752"N	104°54'21.542"W	point
NRC 26N-5HZ LAND BOX		7500.00	0.00	0.00	3165253.12	1269413.58	40°04'17.112"N	104°54'34.240"W	polygon
NRC SECTION 5 LINES		7500.00	1.11	-120.03	3165133.08	1269413.90	40°04'17.123"N	104°54'35.784"W	polygon
NRC SECTION 8 LINES		7500.00	1.11	-120.03	3165133.08	1269413.90	40°04'17.123"N	104°54'35.784"W	polygon

SURVEY PROGRAM - Ref Wellbore: NRC 26N-5HZ PWB Ref Wellpath: NRC 26N-5HZ (PERMIT REV-1) PWP

Start MD [ft]	End MD [ft]	Positional Uncertainty Model	Log Name/Comment	Wellbore
17.00	7912.49	NaviTrak (Standard)		NRC 26N-5HZ PWB
7912.49	12850.41	NaviTrak (Standard)		NRC 26N-5HZ PWB



Planned Wellpath Report

NRC 26N-5HZ (PERMIT REV-1) PWP

Page 6 of 6



REFERENCE WELLPATH IDENTIFICATION

Operator	KERR-MCGEE OIL & GAS ONSHORE LP	Slot	SLOT#29 NRC 26N-5HZ (500'FNL & 1230'FEL, SEC.08)
Area	COLORADO	Well	NRC 26N-5HZ
Field	WELD COUNTY (KERR MCGEE)	Wellbore	NRC 26N-5HZ PWB
Facility	SEC.08-T1N-R67W		

WELLPATH COMMENTS

MD [ft]	Inclination [°]	Azimuth [°]	TVD [ft]	Comment
4286.91	14.000	94.490	4215.00	PARKMAN
4632.16	14.000	94.490	4550.00	SUSSEX
7497.24	48.475	359.333	7319.00	SHARON SPRINGS
7592.60	58.011	359.333	7376.00	NIOBRARA A
7795.00	78.252	359.333	7451.00	NIOBRARA B