



Physical Address: 345 Comanche St.  
 Mail to: Box 384, Kiowa, CO 80117  
 Ph. 303-621-8672 - Fax 303-621-7749  
 www.highprairiesurvey.com

Job # 14025 Hanavan #15-1 (Re-Entry)

Inv # 2979

High Prairie Surveying of Kiowa, Colorado has in accordance with a request from Pronghorn Operating LLC has determined the location of Hanavan #15-1 (Re-Entry) to be 671 feet FSL, and 1984 feet FEL, (90° off Section lines) of SECTION 15, Township 13s, Range 44w of the 6th Principal Meridian, Cheyenne County, Colorado.

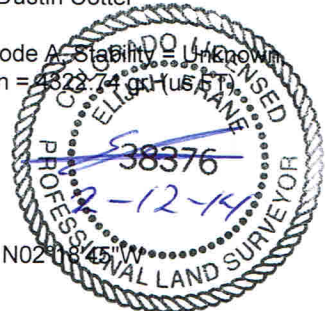
**Date:** Staked on 02/10/2014 drawn on 02/11/2014

**Re:** Staked by Elijah Frane

**Drawn:** Drawn by Dustin Cotter

**Basis of Elevation Spot:** USGS BM = H 12, PID = JJ0627, H-Order = Third, V-Order = Code A, Stability = Unknown, P-DOP = 2.6, Sats = 7 US NAD 83 CO-C, Lat. = 38.88446, Long. = W102.35200, Elevation = 4222.74 gr (US FT)

**Notes:** There are no apparent improvements within 500 ft of proposed well pad.  
 The ground elevation at staked location = 4216.75' gr.  
 This drawing does not represent a monumented survey or Land Survey Plat.



**Basis of Bearing:** Bearings were determined based on the East line of Section 15 to bear N02°18'45"W with all other bearings contained herein relative thereto.

