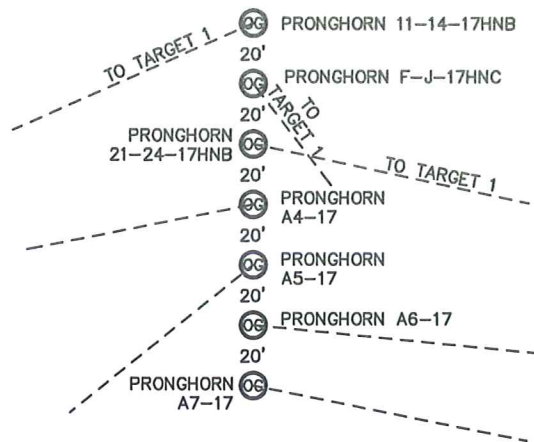
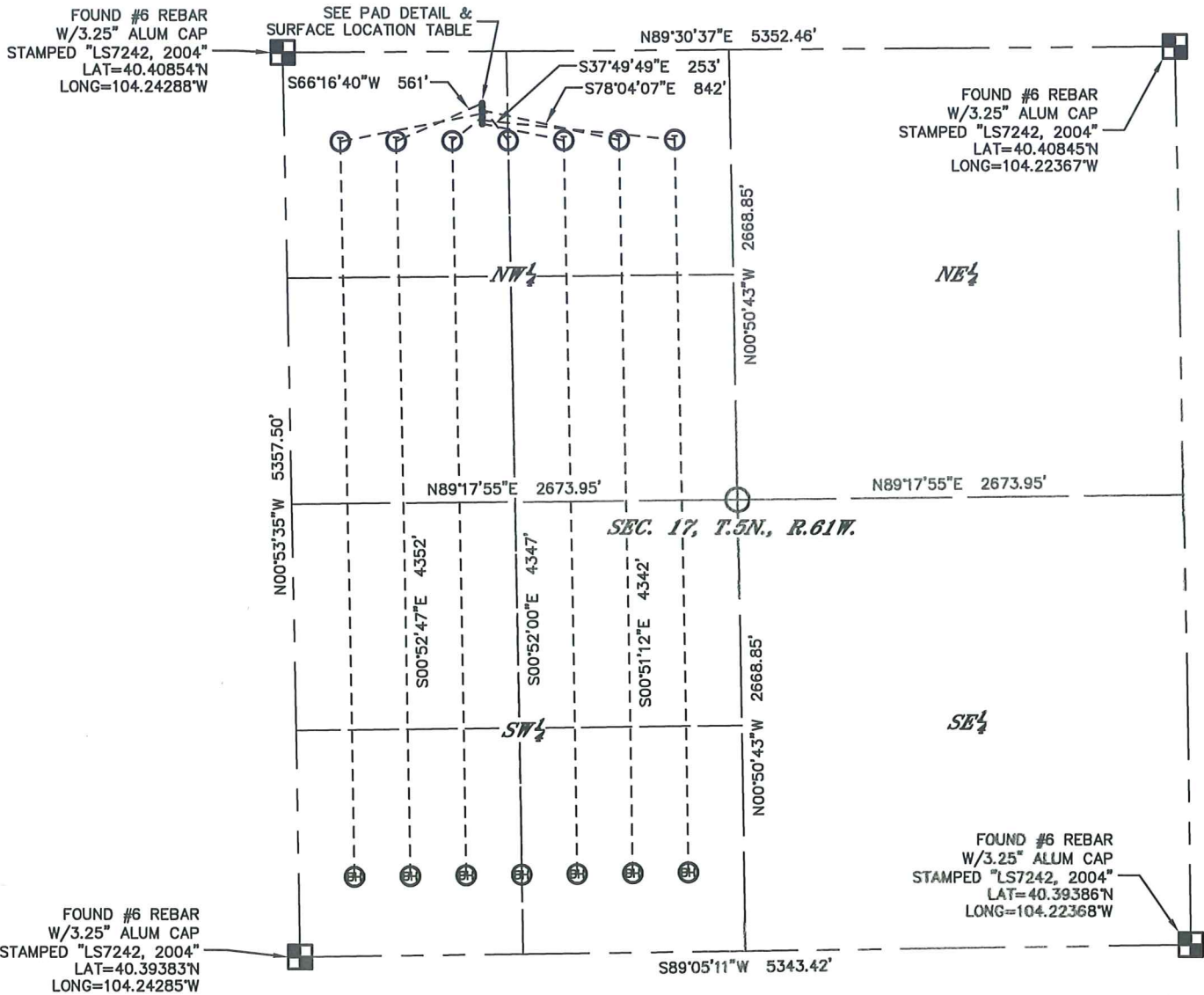
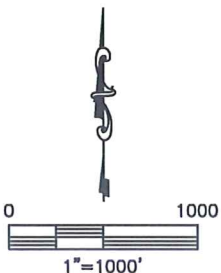


KING SURVEYORS 650 E. GARDEN DR. WINDSOR, CO 80550  
**MULTI-WELL PLAN (1 of 2)**  
**PRONGHORN F-17 PAD**

SECTION: 17  
 TOWNSHIP: 5N  
 RANGE: 61W



**PAD DETAIL**  
 N.T.S.



MULTI-WELL PLAN (2 of 2)

PRONGHORN F-17 PAD

SECTION: 17  
TOWNSHIP: 5N  
RANGE: 61W

SURFACE LOCATIONS

(NORTH TO SOUTH)

PRONGHORN 11-14-17HNB  
310' FNL  
1186' FWL  
LAT=40.40767°N  
LONG=104.23862°W

PRONGHORN F-J-17HNC  
330' FNL  
1186' FWL  
LAT=40.40761°N  
LONG=104.23862°W

PRONGHORN 21-24-17HNB  
350' FNL  
1186' FWL  
LAT=40.40756°N  
LONG=104.23862°W

PRONGHORN A4-17  
370' FNL  
1185' FWL  
LAT=40.40750°N  
LONG=104.23862°W

PRONGHORN A5-17  
390' FNL  
1185' FWL  
LAT=40.40745°N  
LONG=104.23862°W

PRONGHORN A6-17  
410' FNL  
1185' FWL  
LAT=40.40739°N  
LONG=104.23862°W

PRONGHORN A7-17  
430' FNL  
1185' FWL  
LAT=40.40734°N  
LONG=104.23862°W

TARGET 1 LOCATIONS

(WEST TO EAST)

PRONGHORN 11-14-17HNB  
531' FNL  
669' FWL  
LAT=40.40707°N  
LONG=104.24048°W

PRONGHORN F-J-17HNC  
531' FNL  
1338' FWL  
LAT=40.40706°N  
LONG=104.23808°W

PRONGHORN 21-24-17HNB  
531' FNL  
2007' FWL  
LAT=40.40705°N  
LONG=104.23567°W

BOTTOM HOLE LOCATIONS

(WEST TO EAST)

PRONGHORN 11-14-17HNB  
470' FSL  
668' FWL  
LAT=40.39513°N  
LONG=104.24046°W

PRONGHORN F-J-17HNC  
470' FSL  
1336' FWL  
LAT=40.39513°N  
LONG=104.23806°W

PRONGHORN 21-24-17HNB  
470' FSL  
2004' FWL  
LAT=40.39513°N  
LONG=104.23566°W