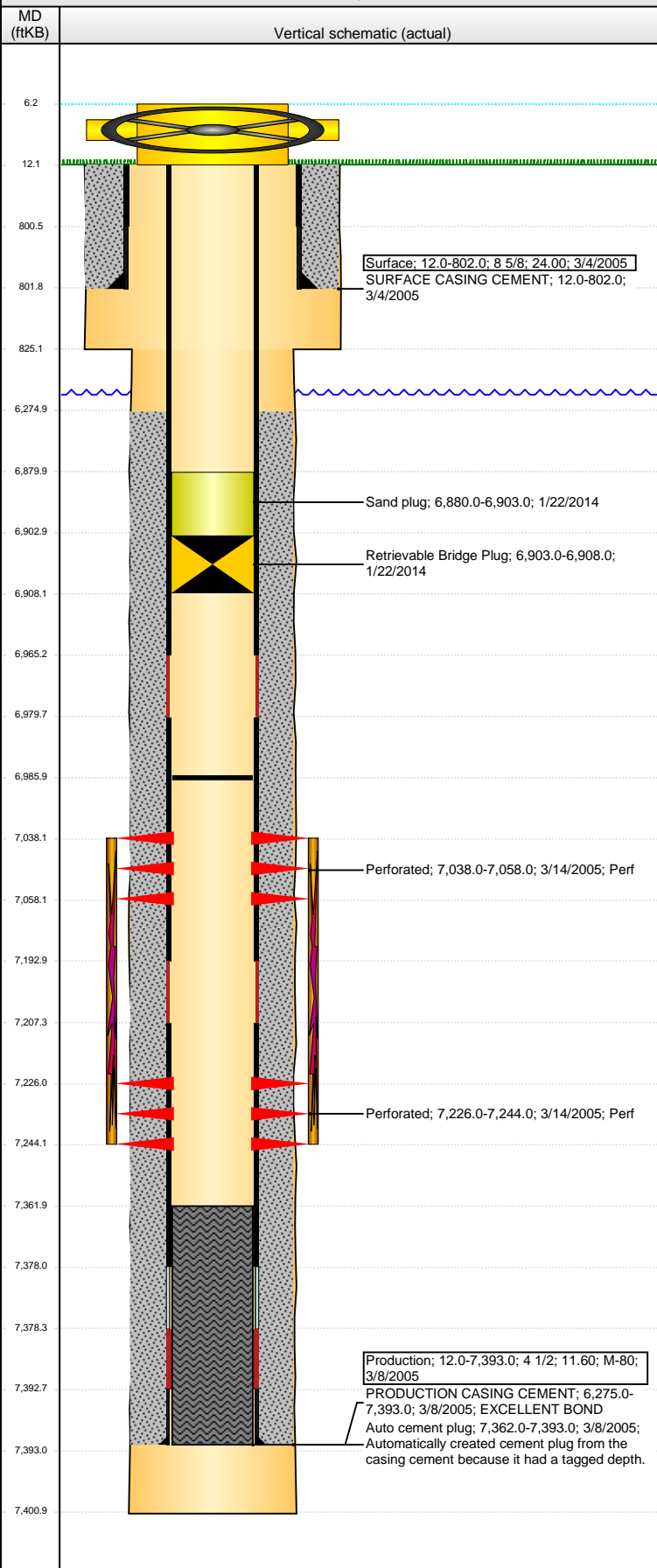


**Well Name: HERGERT 17-22**

VERTICAL - ORIGINAL HOLE, 2/13/2014 7:53:38 AM



## Well Header

API	Business Unit	District	Well Config
05-123-22715	WATTENBERG	15	VERTICAL
Original KB Elevation (ft)	KB - GL / MSL (ftKB)	Spud Date	P & A Date
4,840.00	12.00	3/3/2005	

## Comment

HOLES IN CASING BETWEEN 3141' & 4136'

## Directions To Well

## Congressional Location

Quarter 1	Quarter 2	Quarter 3	Quarter 4	Section	Township	Twnshp N...	Range	Rng E/W Dir
	SE	NW	NW	17	6	N	66	W

## Bottom Hole Location

North-South Distance (ft)	From N or S Line	East-West Distance (ft)	From E or W Line

## Plug Back Total Depths

Date	Depth (ftKB)	Method	Com
3/8/2005	7,377.8	CASING TALLY	FLOAT COLLAR
3/14/2005	7,362.0	TAG	CBL DEPTH LOGGER
11/2/2005	6,986.0	TAG	FILE SAYS CLEAN OUT TO PBTD = 6986'

## Wellbore Sections

Section Des	Size (in)	Act Top, MD (ftKB)	Act Btm, MD (ftKB)
SURFACE	12 1/4	12.0	825.0
PRODUCTION	7 7/8	825.0	7,401.0

## Zone Statuses

Zone Name	Status Date	Status	Job
CODELL	4/25/2005	PR	DRILLING/COMPLETION - ORIGINAL, 3/3/2005 00:00
NIOBRARA	4/25/2005	PR	DRILLING/COMPLETION - ORIGINAL, 3/3/2005 00:00

## Casing Strings

### Surface, 802.0ftKB

Casing Description	Run Date	OD (in)	Wt/Len (l...)	Grade	Top, MD (ft...)	MD (ftKB)
Surface	3/4/2005	8 5/8	24.00		12.0	802.0

### Production, 7,393.0ftKB

Casing Description	Run Date	OD (in)	Wt/Len (l...)	Grade	Top, MD (ft...)	MD (ftKB)
Production	3/8/2005	4 1/2	11.60	M-80	12.0	7,393.0

## Cement

Description	Top Depth (ftKB)	Bottom Depth (ftKB)
SURFACE CASING CEMENT	12.0	802.0
Description	Top Depth (ftKB)	Bottom Depth (ftKB)
PRODUCTION CASING CEMENT	6,275.0	7,393.0

## Tubing Components

Item Des	OD (in)	Wt (lb/ft)	Grade	Jts	Len (ft)	Btm (ftKB)	Btm (TVD) (ftKB)

## Perforation Data

Zone	Bnch/St g	Entered Shot Total	Top (ftKB)	Btm (ftKB)	Date
NIOBRARA, ORIGINAL HOLE	B	80	7,038.00	7,058.00	3/14/2005
CODELL, ORIGINAL HOLE		72	7,226.00	7,244.00	3/14/2005

## Stimulations & Treatments

Date	Zone	Primary Job Type	
3/17/2005	NIOBRARA-CODELL, ORIGINAL HOLE	DRILLING/COMPLETION - ORIGINAL	
Technical Result		Tech Result Details	Tech Result Note
Comment			

## Other In Hole

Run Date	Des	OD (in)	Top (ftKB)	Btm (ftKB)
1/22/2014	Retrievable Bridge Plug	3.99	6,903.0	6,908.0
1/22/2014	Sand plug	3.99	6,880.0	6,903.0

## Logs

Date	Type	Top, MD (ftKB)	Btm, MD (ftKB)
3/7/2005	COMPENSATED DENSITY	3,600.0	7,403.0
3/7/2005	INDUCTION	802.0	7,403.0
3/14/2005	CBL/CCL/GR	6,100.0	7,360.0