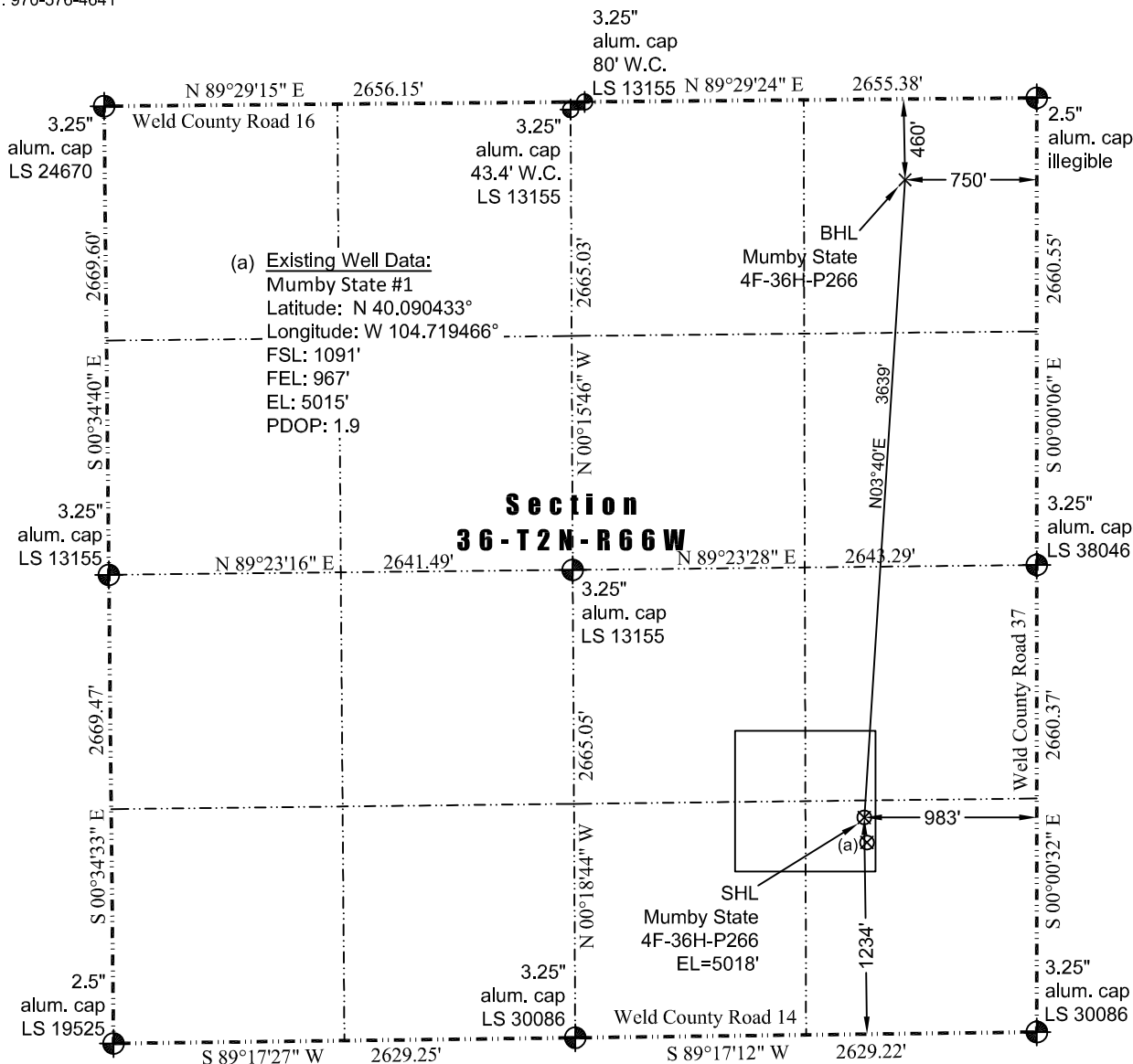


JR Land Surveying, LLC

8114 Northstar Drive
Windsor, Colorado 80528
P. 970-576-4641

WELL LOCATION CERTIFICATE

THIS MAP DOES NOT REPRESENT A BOUNDARY SURVEY



Scale 1" = 1000'
1000'
approximate scale

LEGEND
— found survey monument
— calculated dimension
(c)

In accordance with a request from Jay Knutson of EnCana Oil & Gas (USA) Inc., JR Land Surveying, LLC has determined the location of the **Mumby State 4F-36H-P266** well site to be SHL: 1234' FSL and 983' FEL, (BHL: 460' FNL and 750' FEL), as measured at ninety (90) degrees from the section lines of Section 36, Township 2 North, Range 66 West of the 6th Principal Meridian, Weld County Colorado.

Proposed Surface Hole Data:

Latitude: N 40.090826° (BHL: 40.100790°)
Longitude: W 104.719516° (BHL: 104.718571°)
PDOP: 2.1

Nearest:

Building Unit: 1,087' southwest
Building: 862' southeast
Public Road: 972' east
Property Line: 240' south
Existing Well: Mumby State #1, 144' southeast

Above Ground Utility: 948' northeast
Railroad: +5,280'
Well Window: SHL is 65' inside
High Occupancy Building Unit: +5,280'

Notes:

- 1) Bearings and distances based on NAD 83 Colorado North State Plane Coordinate, using RTK GPS observations taken 12/20/13 by operator John Rice.
- 2) Conversion factor to ground (1.0002810046).
- 3) Elevations based on NAVD 88 GPS heights and Geoid 2003 corrections.
- 4) See Location Drawing for visible improvements within 500 feet of Pad Site.
- 5) The surface use is a uncultivated field/pasture.

NOTICE: According to Colorado law you must commence any legal action based upon any defect in this W.L.C. within three years after you first discover such defect. In no event may any action based upon any defect in this W.L.C. be commenced more than ten years from this said date of the certification shown hereon.

I hereby certify that this Well Location Certificate was prepared by me or under my direct supervision on 1/22/2014 for and on behalf of EnCana Oil & Gas (USA) Inc. That it is not a Land Survey Plat or an Improvement Survey Plat and that it is not to be relied upon for establishment of fences, buildings, or other future improvement lines.

John Robert McGehee LS#38219
Well: Mumby State 4F-36H-P266 WLC