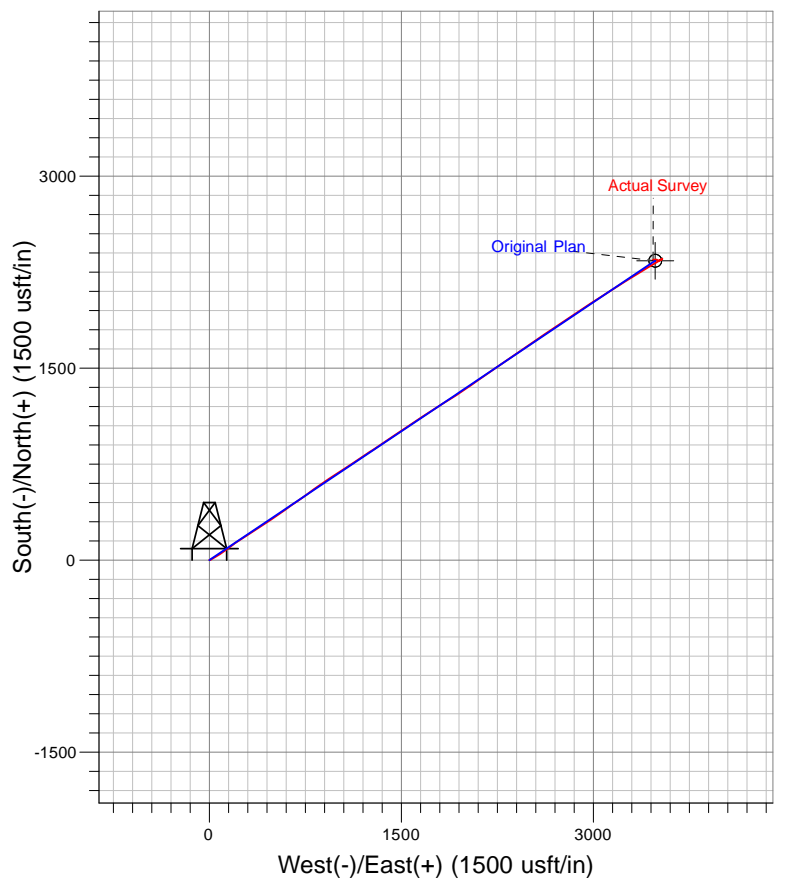
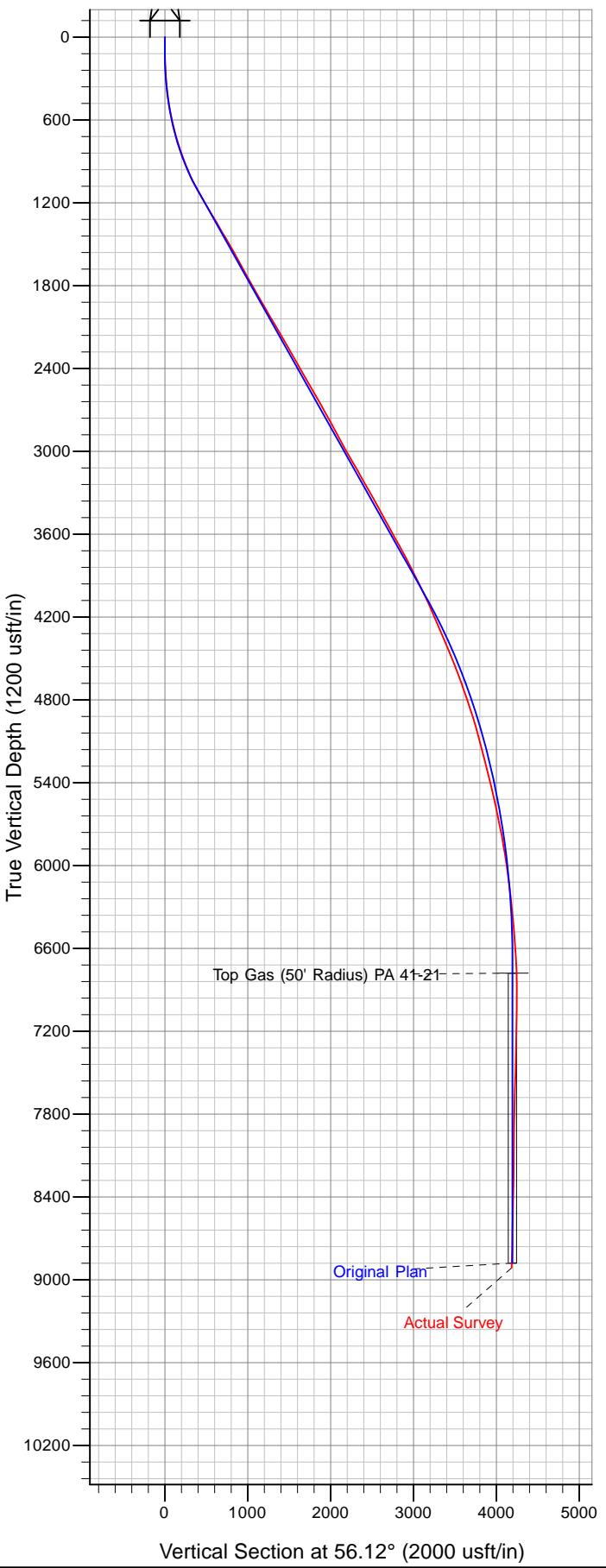
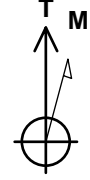




Well Name: PA 41-21
 Surface Location: PA 22-21 Pad
 North American Datum 1983 , US State Plane 1983. Colorado Central Zone
 Ground Elevation: 6030.00
 +N/-S +E/-W Northing Easting Latitude Longitude Slot
 0.00 0.00 1620599.20 2292509.50 39.51051 -108.00788 2A1
 RKB @ 6056.00usft (Nabors 573 (26' KB))





Azimuths to True North
 Magnetic North: 10.06°

Magnetic Field
 Strength: 52022.7snT
 Dip Angle: 65.69°
 Date: 10/7/2013
 Model: IGRF2010