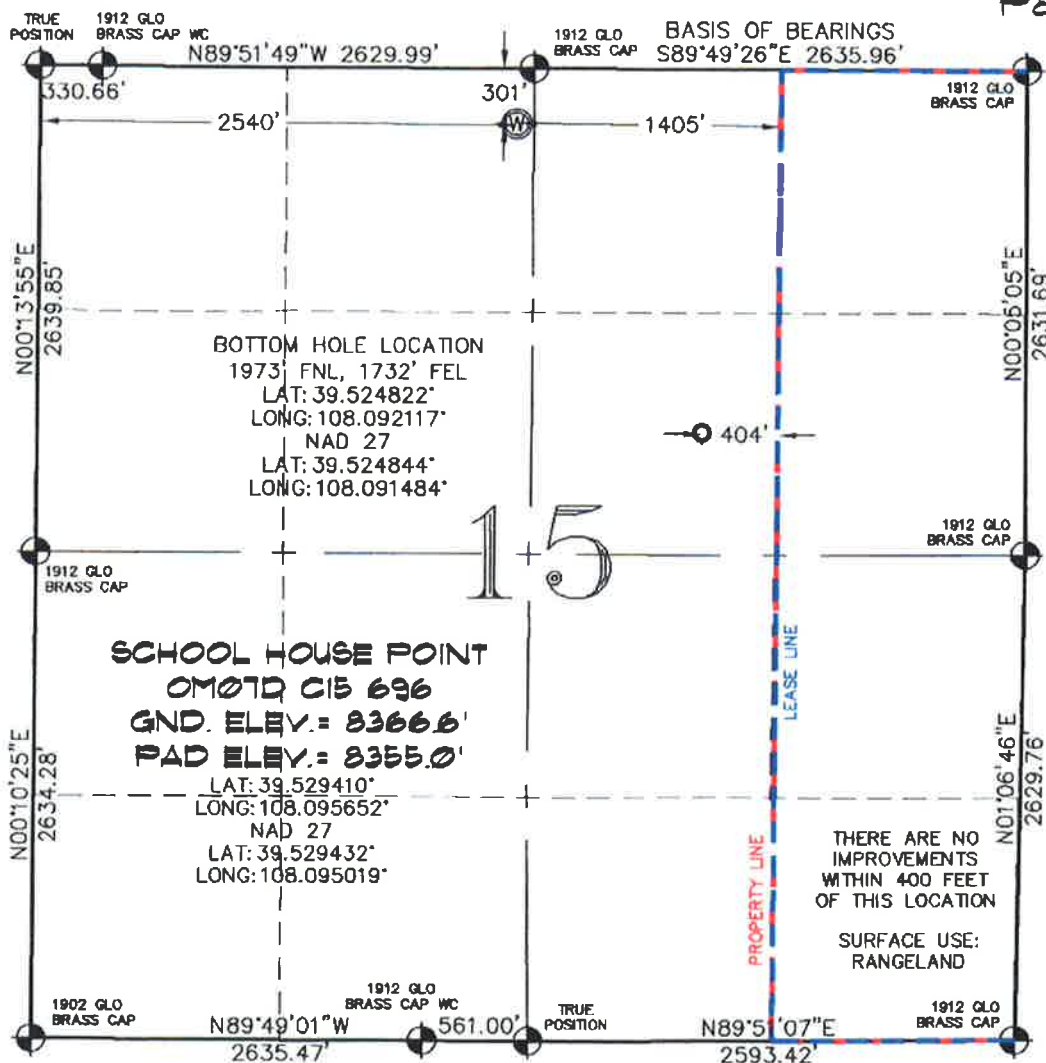


SEC. 15, T. 6 S., R. 96 W. OF THE 6TH P.M. Old Mountain C15-696
Pad Location



-LEGEND-

- SECTION CORNER LOCATION BASED ON GLO RECORD INFORMATION
- ⊙ FIELD SURVEYED SECTION CORNER LOCATIONS
- ⊙ FIELD SURVEYED WELL LOCATION
- CALCULATED BOTTOM HOLE LOCATION

THIS WELL LOCATION PLAT WAS PREPARED FOR BERRY PETROLEUM COMPANY TO LOCATE THE SCHOOL HOUSE POINT OMOTD C15 696 WELL, 301 FEET FROM THE NORTH LINE AND 2540 FEET FROM THE WEST LINE IN THE NE1/4 NW1/4 OF SECTION 15, T. 6 S., R. 96 W. OF THE 6TH P.M. GARFIELD COUNTY, COLORADO.

REFERENCE NOTES

- 1) T. 6 S., R. 96 W., 6TH P.M. GLO PLAT.
- 2) U.S.G.S. QUAD: FORKED GULCH, CO
- 3) ELEVATIONS BASED ON N.A.V.D. 1988
- 4) LATITUDES AND LONGITUDES ARE BASED ON NAD 83, COLORADO CENTRAL ZONE.
- 5) GPS OPERATOR IVAN MARTIN, OBSERVED A PDOP OF 2.3.
- 6) ALL GPS OBSERVATIONS ARE IN COMPLIANCE WITH COGCC RULE NO. 215.
- 7) SURFACE AND BOTTOM HOLE LOCATIONS ARE MEASURED 90° FROM SECTION LINES.

SURVEYOR'S CERTIFICATE

I, George R. Bauer, a Professional Land Surveyor in the State of Colorado do hereby certify that this Survey was made under my direct supervision, and that this Plat represents said Survey.

COLORADO P.L.S. 27925



CONSTRUCTION SURVEYS, INC.
0012 SUNRISE BLVD.
SILT, CO 81652
(970)876-5753

VIEW: 1P

SURVEYED: 05/30/12	SCALE: 1" = 1000'
DRAWN: 03/21/13	DWG: Berry/Old Mtn C15-696.dwg
CHECKED: 04/04/13	SHEET: 1 of 11