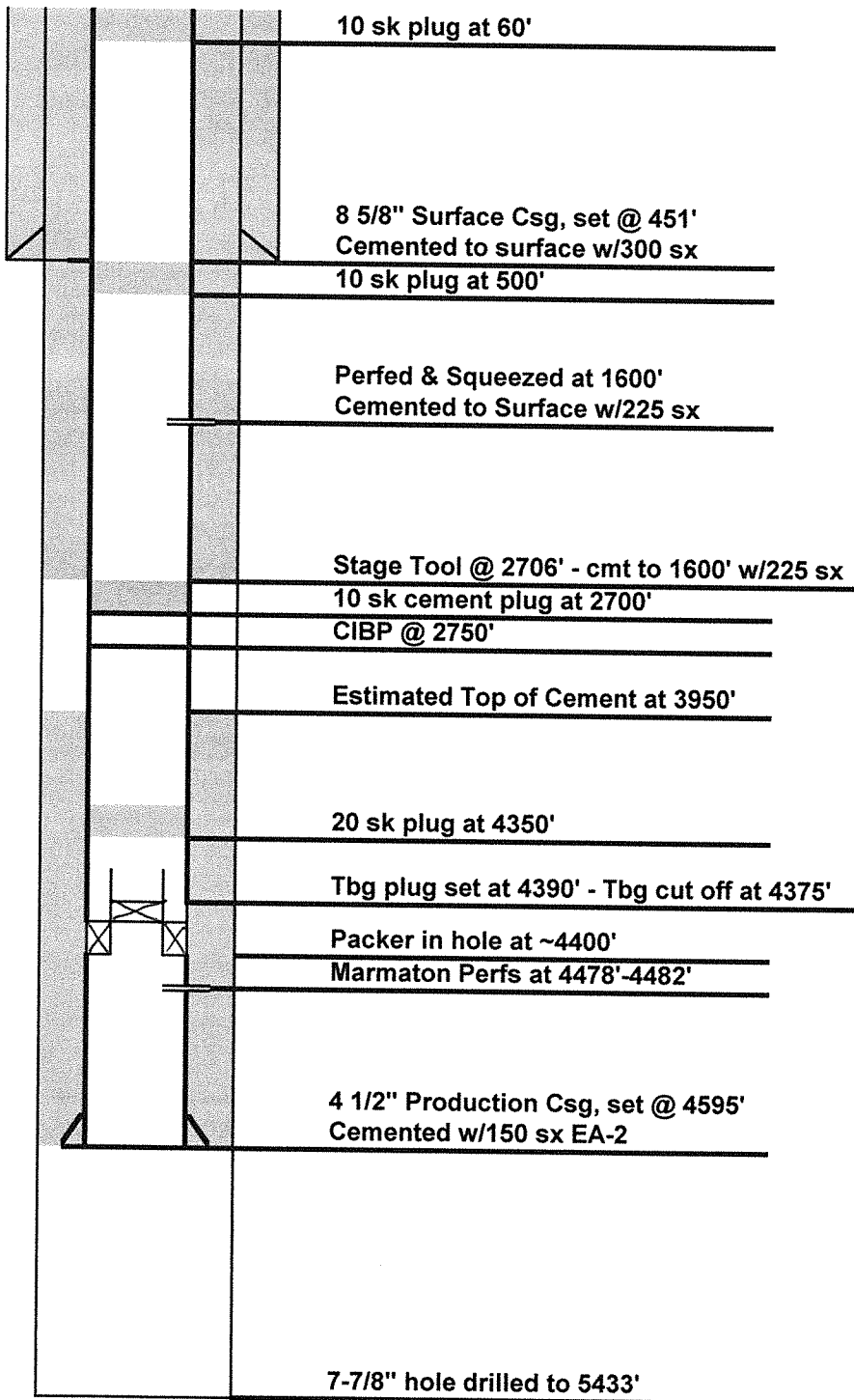




DRILLING COMPANY, INC.

WICHITA, KANSAS

CURRENT WELLBORE CONFIGURATION



Date: 2/12/2014
Well Name: *APC-Charlotte #2-3
*Originally drilled as Tallman Farms #1-3 by Dunne Equities Operating Inc.
Location: 2390' FNL & 718' FEL
Section 3-T16S-R45W
County: Cheyenne
State: Colorado
API: 05-061-06730-00
Spud Date: 7/2/1996
Hole Size: 12 1/4"
Surface Casing: Set @ 451' (8 5/8")
Cemented with: 300 sx
Production Csg: Set @ 4595' (4 1/2")
Cemented with: 150 sx EA-2
RTD: 5433'

RE-ENTRY PLANS

Drillout cement plugs at 60' & 2700'.
Drillout CIBP at 2750'.
Drillout cement plug at 4350'.
Circulate hole clean to 4375'.
Complete well in Lansing at 4272'-4278'.