

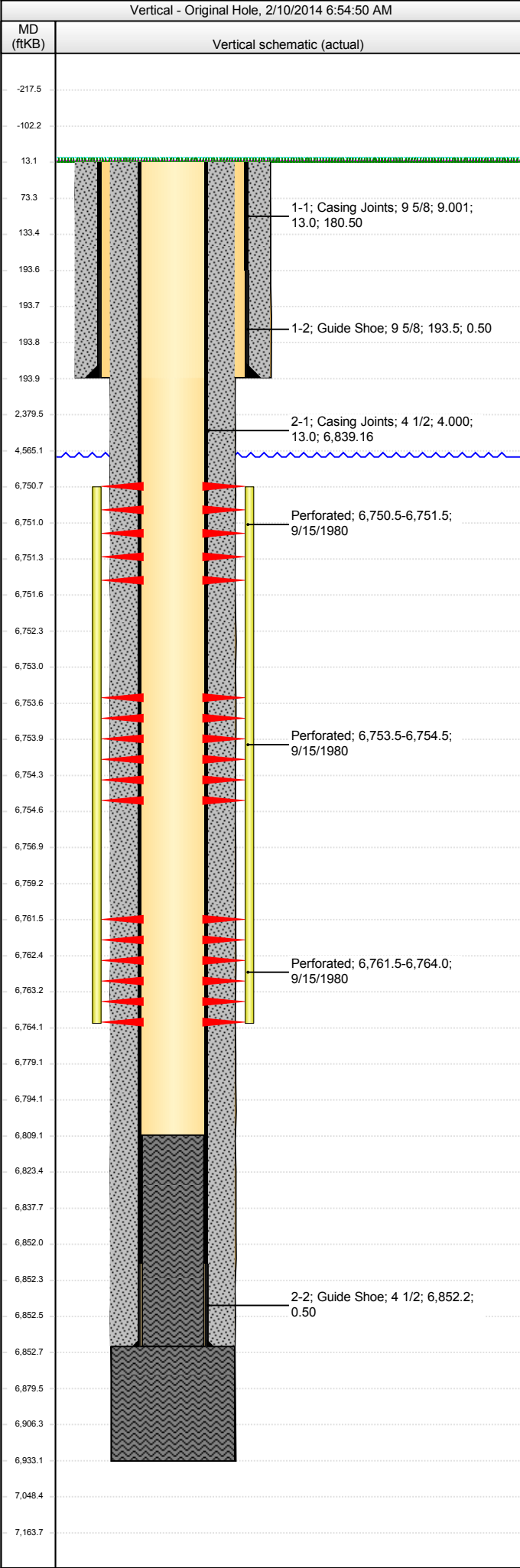


Whiting Oil & Gas Corp
1700 Broadway, Suite 2300
Denver, CO 80290
(303) 837-1661

WOGC Well History Schematic Report

Well Name: NELSON RANCHES 3

API Number 051231004800		WPC ID 1CO076805			Well Permit Number 19801133			Field Name Terrace			County Weld			State CO		
Well Configuration Type Vertical				Orig KB Elv (ft) 4,959.00		Ground Elevation (ft) 4,946.00		Casing Flange Elevation (ft) 4,947.00			Tubing Head Elevation (ft)		Total Depth (ftKB) 6,933.0			
Original Spud Date 8/22/1980		Completion Date 10/3/1980		Asset Group Redtail Asset Group				Responsible Engineer Gary Nordlander			N/S Dist (ft) 2,260.0		N/S Ref FSL	E/W Dist (ft) 1,340.0		E/W Ref FWL
Lot	Quarter 1 NE	Quarter 2 SW	Quarter 3	Quarter 4	Section 7	Section Suffix	Section Type	Township 10		Township N/S Dir N	Range 58		Range E/W Dir W		Meridian	



Jobs	
Job Type	Start Date
Drill & Complete	8/19/1980
Clean Out	5/12/1989
Reconfigure Tubing/Components	7/12/1989
Swabbing	2/26/1997
Swabbing	11/24/1997
Swabbing	6/16/2001
Equipment Pressure Integrity Test	7/2/2001
Swabbing	1/13/2005
Swabbing	2/2/2005
Swabbing	12/11/2009
Mechanical Integrity Test	1/2/2014

Perforations			
Type of Hole	Date	Top (ftKB)	Btm (ftKB)
Perforated	9/15/1980	6,750.5	6,751.5
Perforated	9/15/1980	6,753.5	6,754.5
Perforated	9/15/1980	6,761.5	6,764.0

Stim/Treat Stages					
Stage Type	Start Date	Top (ftKB)	Btm (ftKB)	Stim/Treat Fluid	Vol Clean Pump (bbl)
Frac	9/16/1980	6,750.5	6,764.0	1000 gals 7.5% HCl, 46950# 20/40 snd, Acid	

Wellbore Sections					
Section Des	Wellbore Name	Size (in)	Act Top (ftKB)	Act Btm (ftKB)	Start Date
Surface	Original Hole	12 1/4	13.0	194.0	8/22/1980
Production	Original Hole	7 7/8	194.0	6,933.0	8/23/1980

Surface Csg, 194.0ftKB						
Comment						
OD (in)	Wt (lb/ft)	Grade	Top (ftKB)	Btm (ftKB)	Len (ft)	Item Des
9 5/8	29.30		13.0	193.5	180.50	Casing Joints
9 5/8			193.5	194.0	0.50	Guide Shoe

Production Csg, 6,852.7ftKB						
Comment						
OD (in)	Wt (lb/ft)	Grade	Top (ftKB)	Btm (ftKB)	Len (ft)	Item Des
4 1/2	11.60		13.0	6,852.2	6,839.16	Casing Joints
4 1/2			6,852.2	6,852.7	0.50	Guide Shoe

Cement Stages				
Des	Top (ftKB)	Btm (ftKB)	Top Meas Meth	Pump Start Date
Surface Casing Cement	13.0	194.0		8/22/1980
Production Casing Cement	13.0	6,852.7		8/29/1980
Cement below shoe	6,852.7	6,933.0		8/29/1980
PB cmt	6,809.0	6,852.7		8/29/1980

Other In Hole					
Des	OD (in)	ID (in)	Run Date	Top (ftKB)	Btm (ftKB)

Tubing set at 6,738.8ftKB on 7/3/2001 06:00					
Set Depth (ftKB) 6,738.8	Comment Hydrotest to 6000#, found 3 holes in tbg	Run Date 7/3/2001		Pull Date 1/7/2014	
Item Des		OD (in)	Len (ft)	Top (ftKB)	Btm (ftKB)
Tubing Sub		2 3/8	6.15	13.0	19.2
Tubing Sub		2 3/8	6.15	19.2	25.3
Tubing		2 3/8	6,712.50	25.3	6,737.8
Seating Nipple		2 3/8	1.05	6,737.8	6,738.8

Rods on 7/15/1989 06:00					
Rod Description Rods				Run Date 7/15/1989	
Item Des		OD (in)	Len (ft)	Top (ftKB)	Btm (ftKB)
Rod		7/8	2,250.00	13.0	2,263.0
Rod		3/4	4,325.00	2,263.0	6,588.0
Depth Correction		3/4	6.00	6,588.0	6,594.0
Rod Insert Pump		3/4	6.00	6,594.0	6,600.0

Com