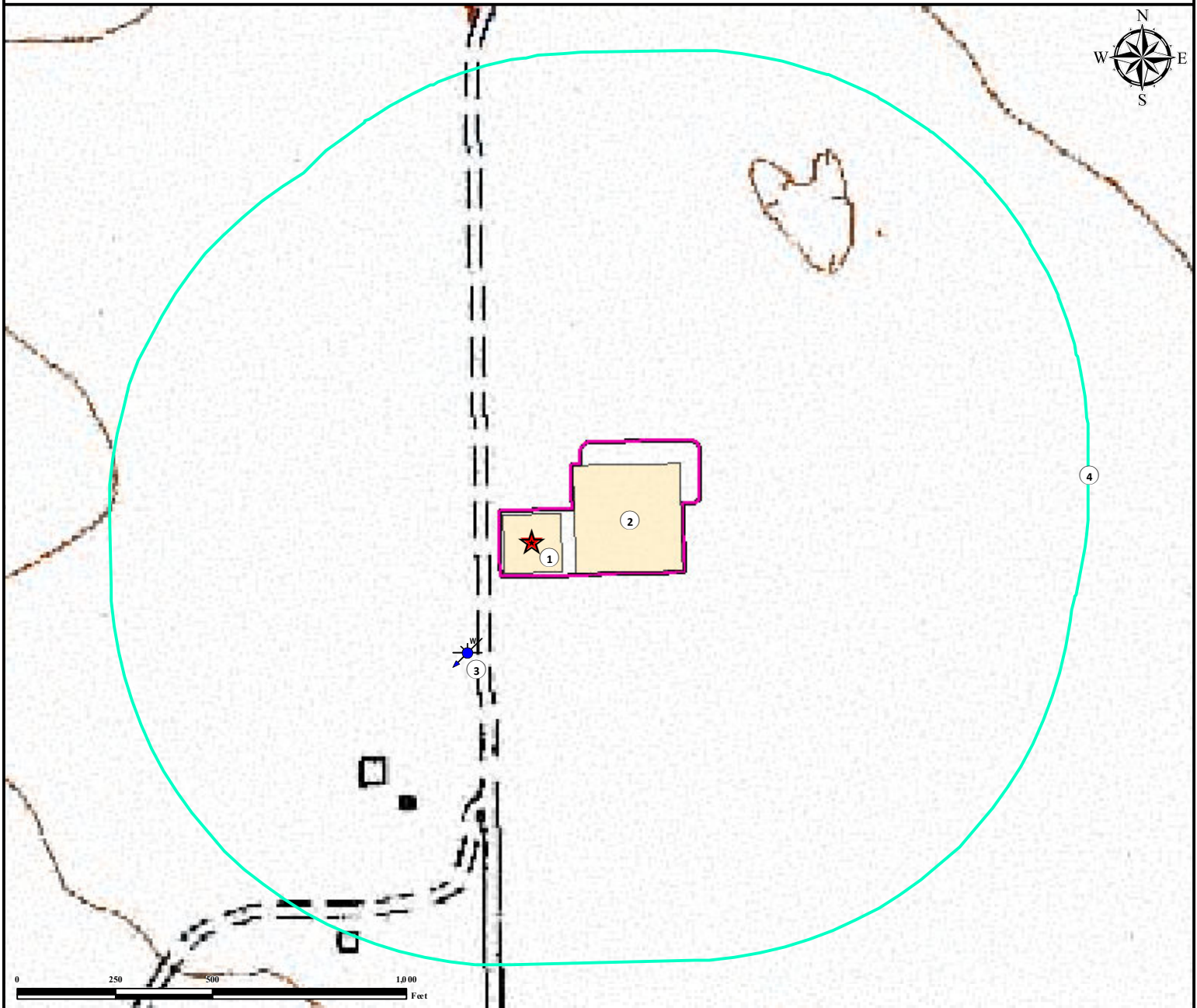


# Hydrology Map





## CRAIG 17-H FACILITY

SW¼ NW¼ SECTION 17, TOWNSHIP 4 SOUTH, RANGE 49 WEST OF THE 6TH PRINCIPAL MERIDIAN



1. Proposed CRAIG 17-H Facility.
2. Proposed CRAIG 17-H Evaporation Pond.
3. Water Well (Permit #286031) is  $\pm 333'$  SW.
4. 1000' Radius.

### Legend

- |  |                   |   |              |
|--|-------------------|---|--------------|
|  | Disturbance Area  |  | 1000' Radius |
|  | Proposed Facility |  | Water Well   |

### Reference Location

\*\* All measurements are made from  
★ Reference Point \*\*

Lat: 39.706678° Long:-102.896350° (NAD83)  
Elevation: 4477 Feet



Use our resources to find yours!  
[www.petro-fs.com](http://www.petro-fs.com)  
(303) 928-7128

Field Date: 10/30/2013  
Drafting Date: 1/15/2014  
Drafter: CSG  
Revision:

Data Sources:  
- Topo courtesy USGS  
- Water features courtesy of NHD

Prepared for:

