



410 17th Street, Suite 1400  
Denver, CO 80202  
(720) 440-6100 phone  
(720) 305-0804 fax

[Bonanza Creek.com](http://Bonanza Creek.com)

February 10, 2014

State Board of Land Commissioners  
North Central District Office  
Attn: Steve Freese  
360 Oak Avenue, Suite 110  
Eaton, Colorado 80615

**Re: Request to access State land  
State 1 well, 5N-62W-1**

Dear Mr. Freese,

Bonanza Creek Energy, Inc. ("Bonanza") would like to request permission to use the surface location of the State 1 ("Well") in order locate and plug said well.


Bonanza intends to re-enter and re-plug the State 1 well, in accordance with the DJ Basin Horizontal Offset Policy, as set forth by the Colorado Oil and Gas Conservation Commission ("COGCC"). The Well will be plugged in accordance with the lease rights granted by the State of Colorado. A 100' x 100' area surrounding the possible location of the Well, as represented on the attached plat, will be designated as the disturbance area. Once the Well is located a 150' x 150' pad will be designated as the pad location for plugging operations. The following procedures will be used to reclaim the location following completion of operations:

- Land will be re-contoured and stabilized to support vegetation, reduce erosion, and establish "bowls" in the general shape and vicinity as those pre-existing, documented by survey and photographs.
- In areas where topsoil was stockpiled the topsoil will be distributed evenly over the entire disturbed area.
- The seedbed will be prepared by disking to a depth of four (4) to six (6) inches, where feasible, following the contour. If the surface is not overly compacted it will not be ripped to hold seed.
- All disturbed areas will be seeded with a seed mixture representative of the surrounding vegetation, or a mixture specified by the surface owner.
- Seeds will be planted prior to ground frost or seed will be planted after the last frost in spring and before dry summer conditions. Seed will be planted to a depth of 0.5 inch. Stabilization using straw crimp or other approved method will be used to stabilize the seedbed to prevent soil loss. Certified seed will be used with a minimum germination rate of 80% and a purity of 90%.
- Prior to final reclamation, a joint inspection of the disturbed area will be held with the surface owner and operator.

Upon review of oil and gas lease no. OG 7905.3, Bonanza has determined that there are no additional stipulations associated with the mentioned lease. However, Bonanza intends to accommodate any timing or location issues that may affect its plugging operations.

Enclosed please find the surveyed plats for the State 1 well located in Section 1, 5N-62W. Please let us know if you would like to set up a consult to view the pad site. Should you find the location satisfactory, please sign and return the attached acknowledgement. If you have any questions, please do not hesitate to call or email me.

Sincerely,  
Bonanza Creek Energy, Inc.

  
Steve McPherson  
Landman III, Rocky Mountain Region  
720-440-6180  
[smcpherson@bonanzacrk.com](mailto:smcpherson@bonanzacrk.com)

**I hereby acknowledge receipt of the surveyed plats for the State 1 well in Section 1, 5N-62W. I find the location to be satisfactory and approve of the wells to be drilled.**

Steve Freese

By: 

Date: 2/12/14

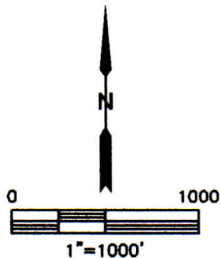
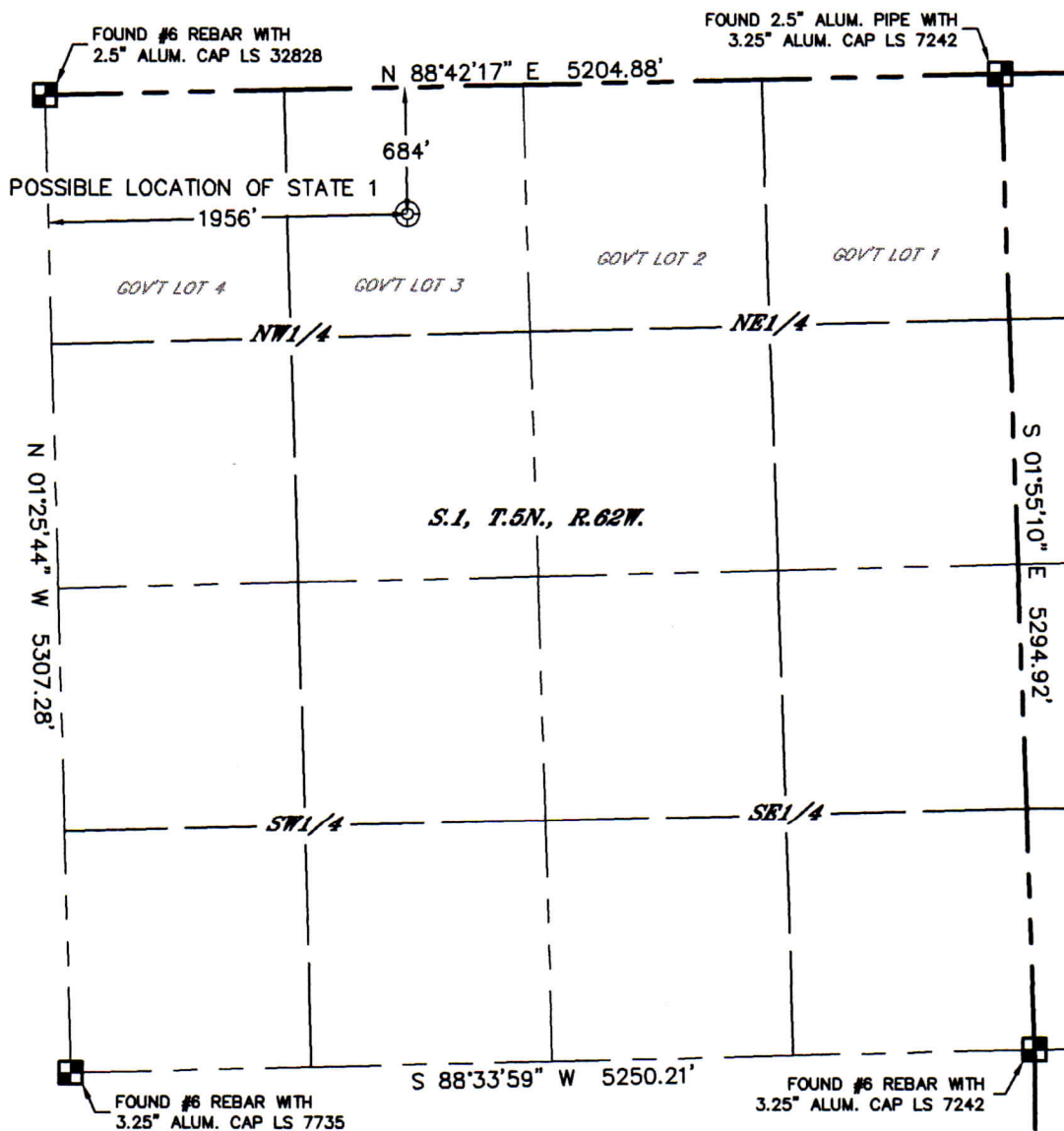


Lat40°, Inc. 1635 Foxtrail Drive, Suite 325 Loveland, CO 970-776-3321

## PLUGGED & ABANDONED WELL EXHIBIT

THIS MAP DOES NOT REPRESENT A BOUNDARY SURVEY

SECTION: 16  
TOWNSHIP: 5N  
RANGE: 62W



SURFACE LOCATION  
LAT: 40.43545N  
LONG: 104.27386W  
PDOP: 2.3  
ELEV: 4676'  
1/4, 1/4: NE1/4NW1/4

SURFACE DESCRIPTION  
FOUND 4' DIAMETER AREA WITH NO VEGETATION. STRONG METAL DETECTOR SIGNAL WITHIN 4' AREA. SET ORANGE LATHE WITH PINK FLAGGING

### LEGEND

- = ALIQUOT MONUMENT AS DESCRIBED
- = CALCULATED POSITION

DATE: 1/24/2014  
PROJECT#: 2013173





Lat40°, Inc. 1635 Foxtrail Drive, Suite 325 Loveland, CO 970-776-3321

## P&A WELL LOCATION PICTURES

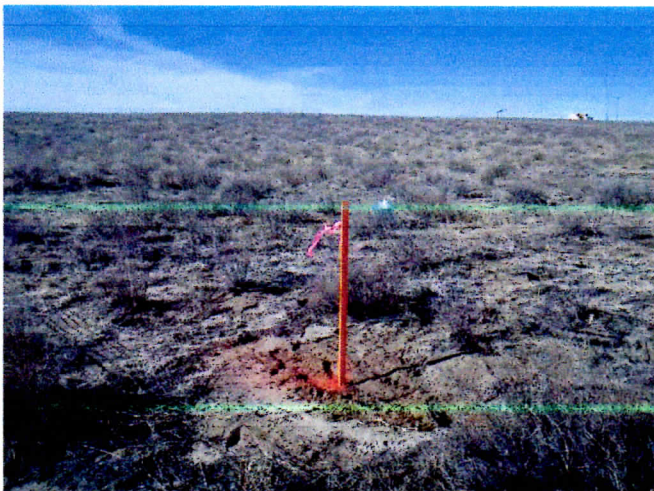
STATE 1

SECTION: 16  
TOWNSHIP: 5N  
RANGE: 62W

DATE: 1/22/2014



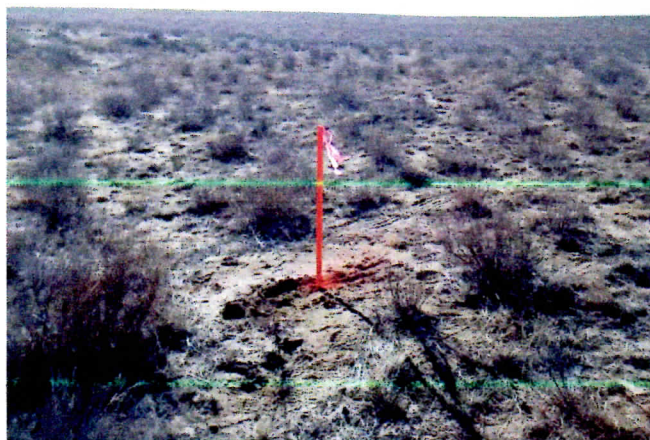
VIEW NORTH



VIEW WEST



VIEW EAST



VIEW SOUTH

DATE: 1/24/2014  
PROJECT#: 2013173