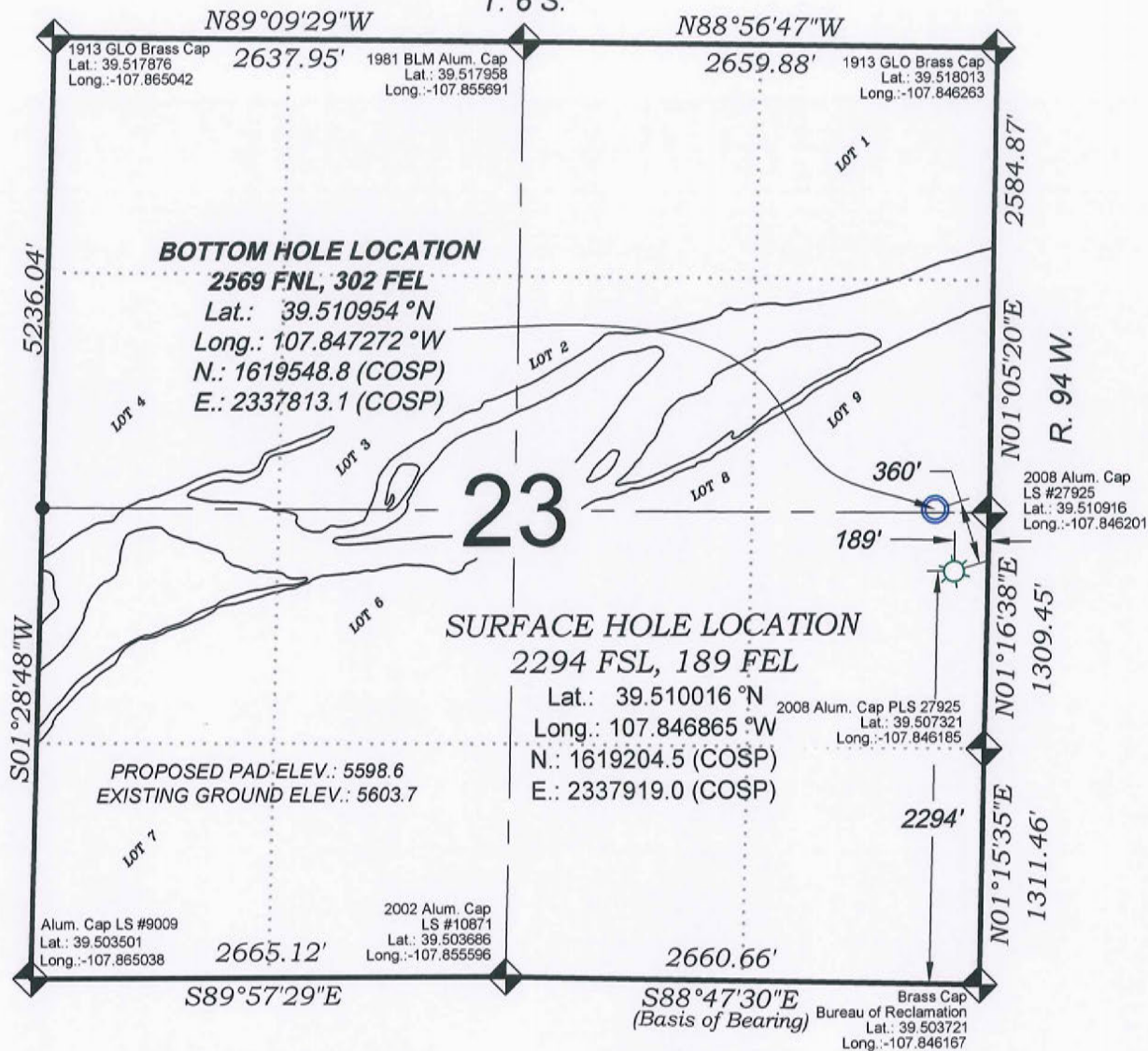
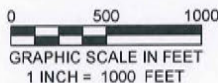


# Mead RWF 542-23

T. 6 S.



SEE CONSTRUCTION LAYOUT  
PLAT FOR VISIBLE IMPROVEMENTS  
WITHIN 500' OF THIS LOCATION



## - LEGEND -

FIELD LOCATED SECTION  
MONUMENTS AS DESCRIBED

FIELD SURVEYED  
WELL LOCATION

CALCULATED BOTTOM  
HOLE LOCATION

CALCULATED SECTION  
CORNER LOCATION

## SURVEYORS STATEMENT

I, MICHAEL J. LANGHORNE, A REGISTERED LAND SURVEYOR IN THE  
STATE OF COLORADO DO HEREBY CERTIFY THAT THE SURVEY SHOWN  
HEREON WAS PREPARED UNDER MY DIRECT SUPERVISION AND HAS  
BEEN STAKED ON THE GROUND AS SHOWN ON THE PLAT AND  
CHECKING THAT THIS MAP IS A TRUE REPRESENTATION THEREOF.

MICHAEL J. LANGHORNE, COLORADO REGISTRATION NO. 36572  
FOR AND ON BEHALF OF  
BOOKCLIFF SURVEY SERVICES, INC.

## REFERENCES

- 1) DEPENDENT RESURVEY AND SURVEY OF TRACT 38,  
T. 7 S., R. 95 W., 6th P.M. (GLO PLAT).
- 2) U.S.G.S. QUAD: RIFLE, CO

REVISED: 1/28/14

SURVEY DATE: 1/13/09

MAP DATE: 6/9/10

SCALE: 1" = 1000'

PLAT: 1 of 1

PROJECT: Valley

## NOTES

- 1) ELEVATIONS BASED ON N.A.V.D. 1988 PUBLISHED COORDINATES.
- 2) LATITUDES AND LONGITUDES ARE BASED ON NAD 83,  
PUBLISHED COORDINATES
- 3) STATE PLANE COORDINATES ARE BASED ON COLORADO  
CENTRAL ZONE, U.S. SURVEY FEET.
- 4) ELEVATION MASK SET TO 15'
- 5) GPS OPERATOR J. KIRKPATRICK, OBSERVED A PDOP 2.3 ON  
SURVEY POINT NUMBER 11182.
- 6) SURFACE AND BOTTOM HOLE LOCATIONS ARE MEASURED 90°  
FROM SECTION LINES.

**WELL LOCATION PLAT Prepared for:**  
**WPXENERGY** WPX Energy Rocky Mountain, LLC

**NE1/4 SE1/4, SECTION 23**  
**T. 6 S., R. 94 W. of the 6th P.M.**  
**GARFIELD COUNTY, COLORADO**

136 East Third Street  
Rifle, Colorado  
81650 Ph. (970)  
625-2720 Fax (970)  
625-2773

**BOOKCLIFF**  
Survey Services, Inc.