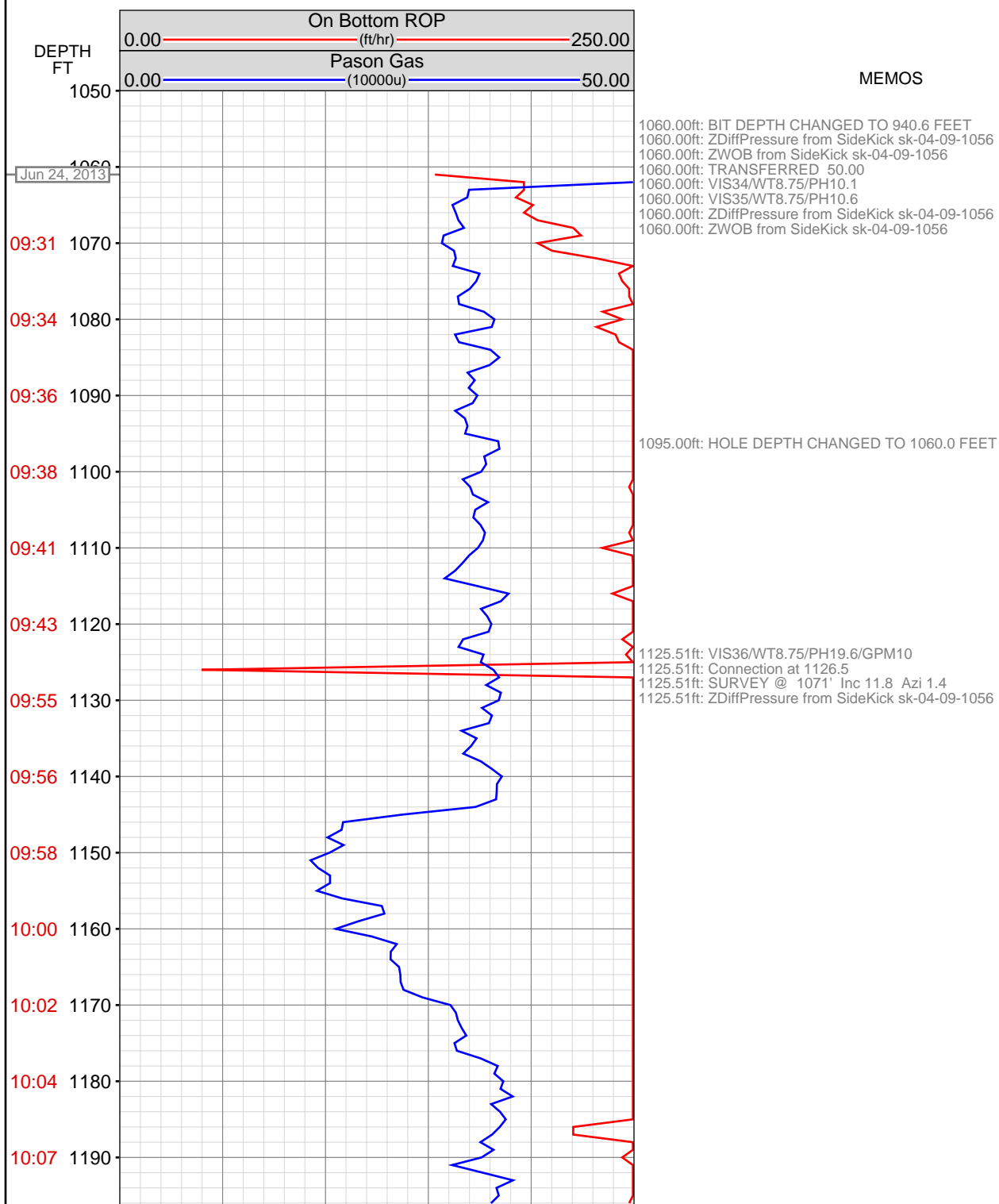
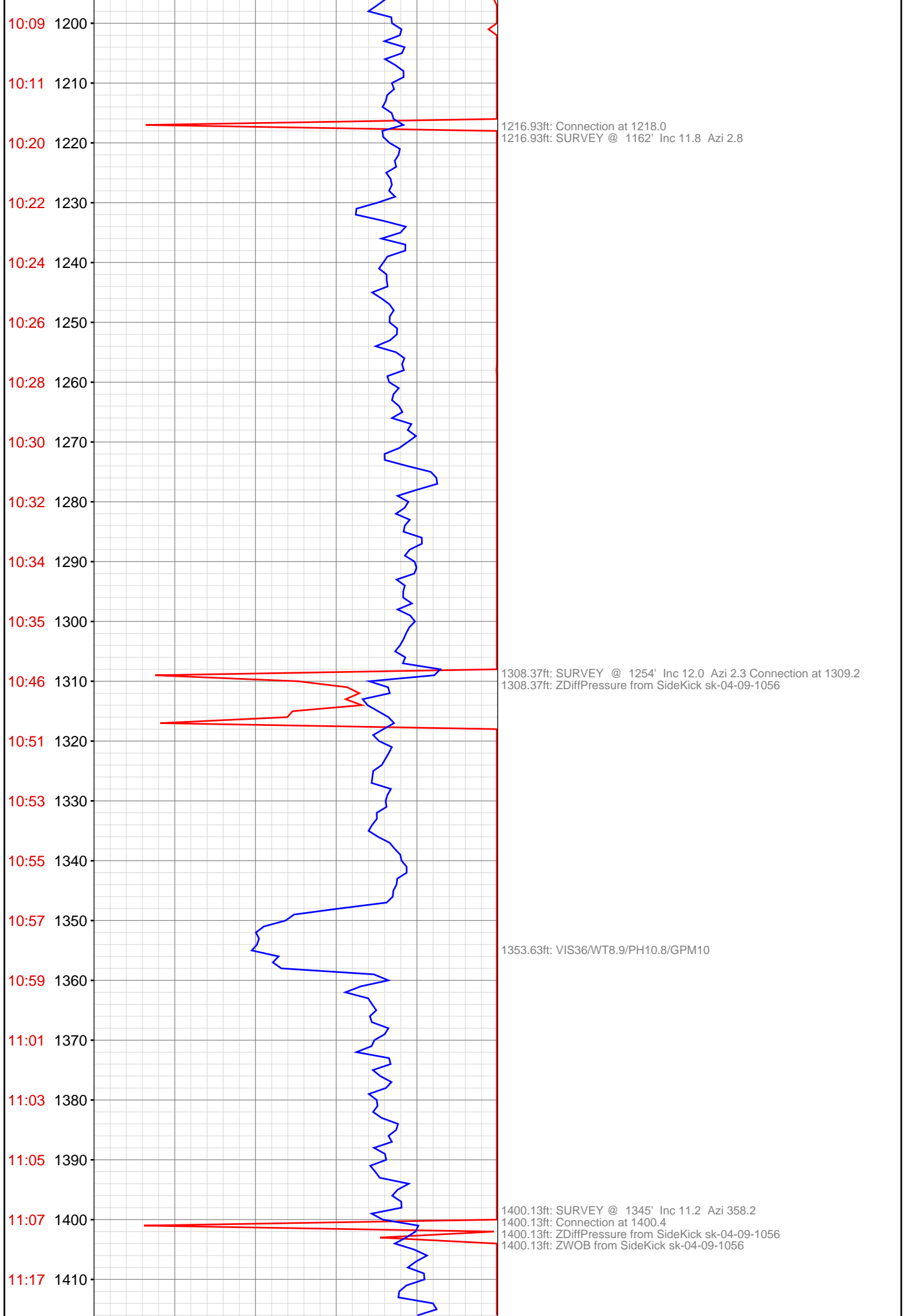
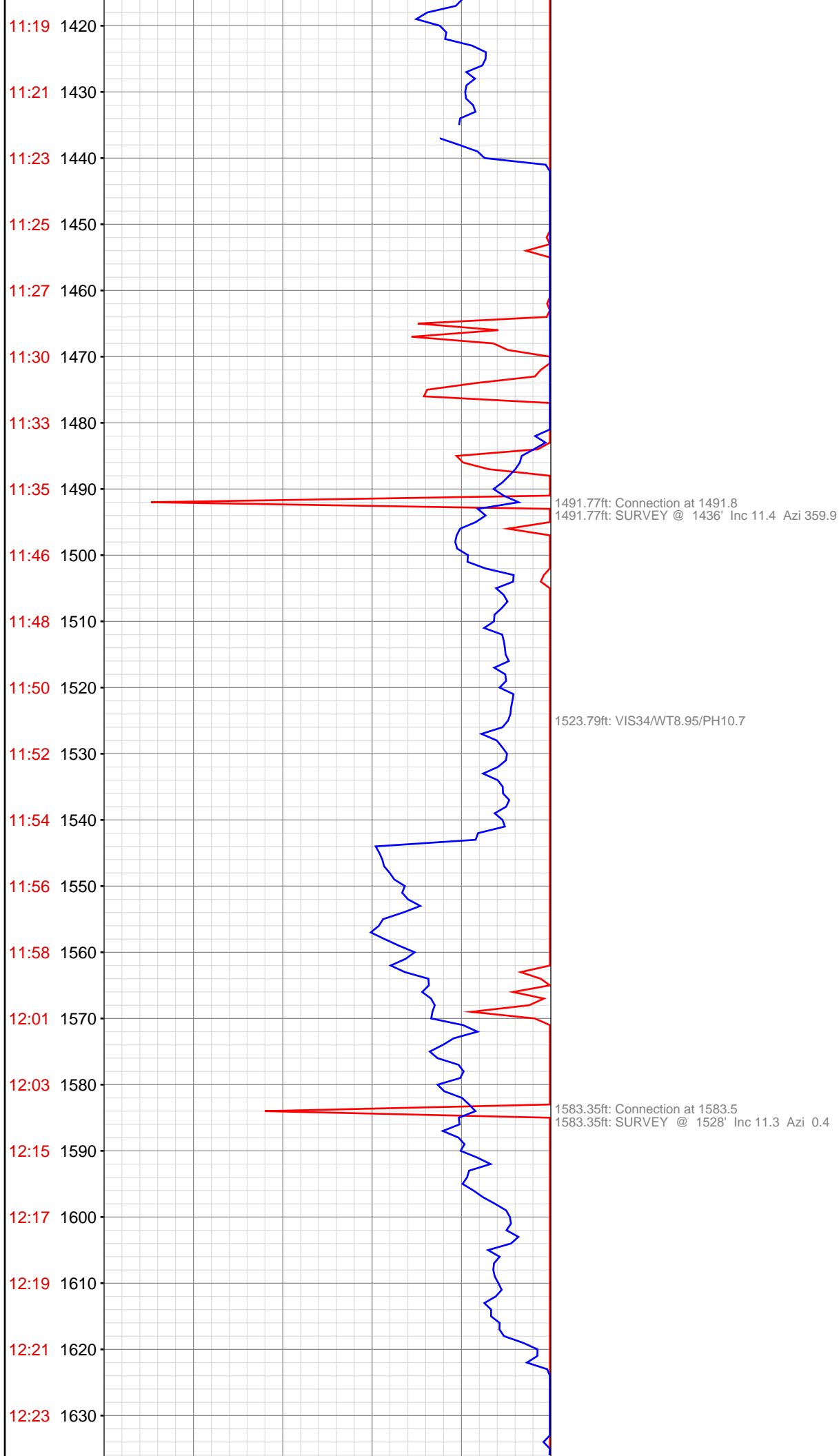


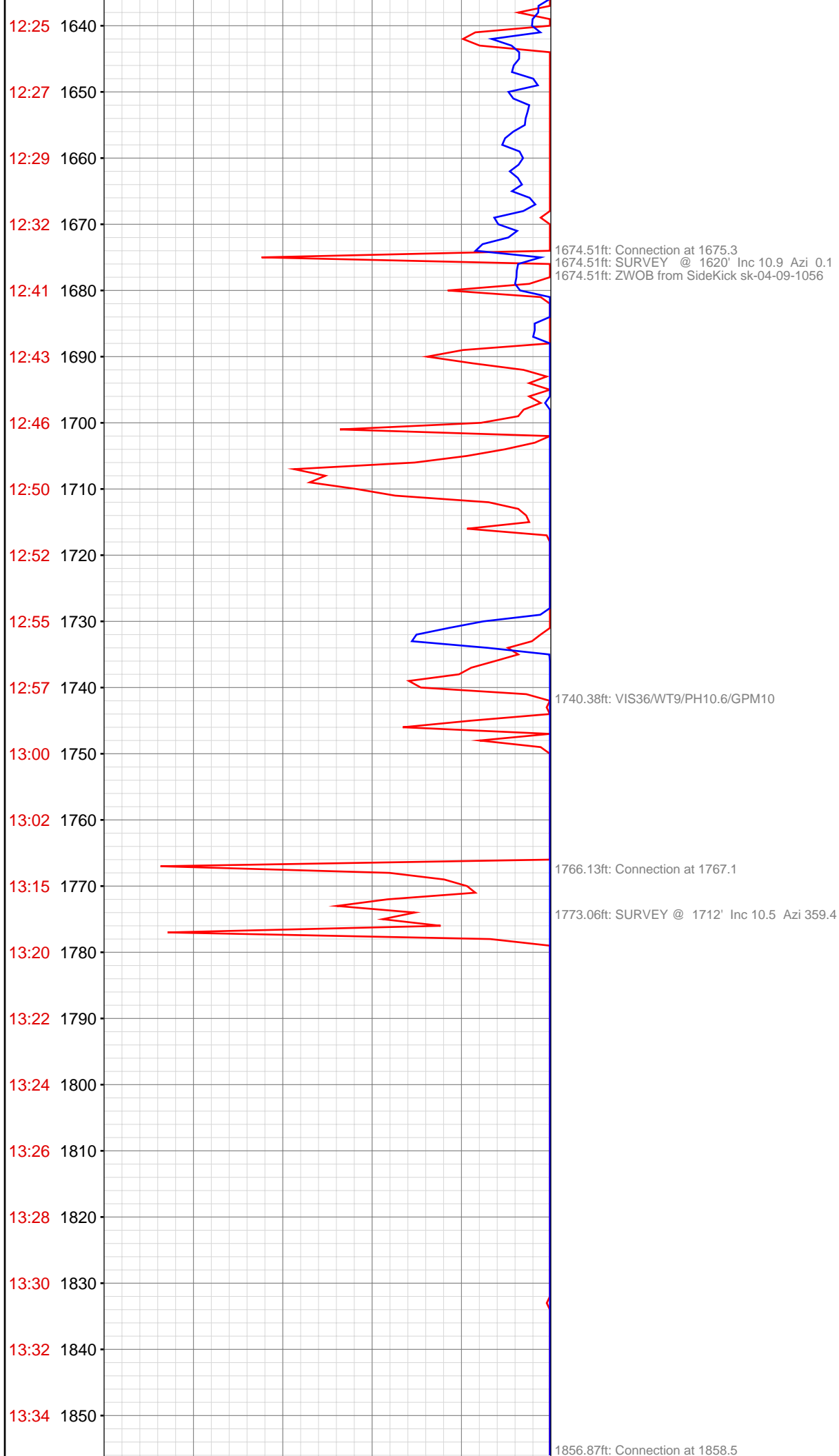
OPERATOR: EnCana Oil & Gas (USA), Inc.
WELL: Hagen 15-14C
FIELD:
LOCATION: NE NW SEC 22, T007S, R95W6
COUNTRY: USA
RIG: Pat-UTI 303

CONTRACTOR:	Patterson-UTI Drilling Company
UNIQUE WELL ID:	05-045-22021
SPUD DATE:	Jun 24, 2013 09:30
RELEASE DATE:	Jun 28, 2013 01:30





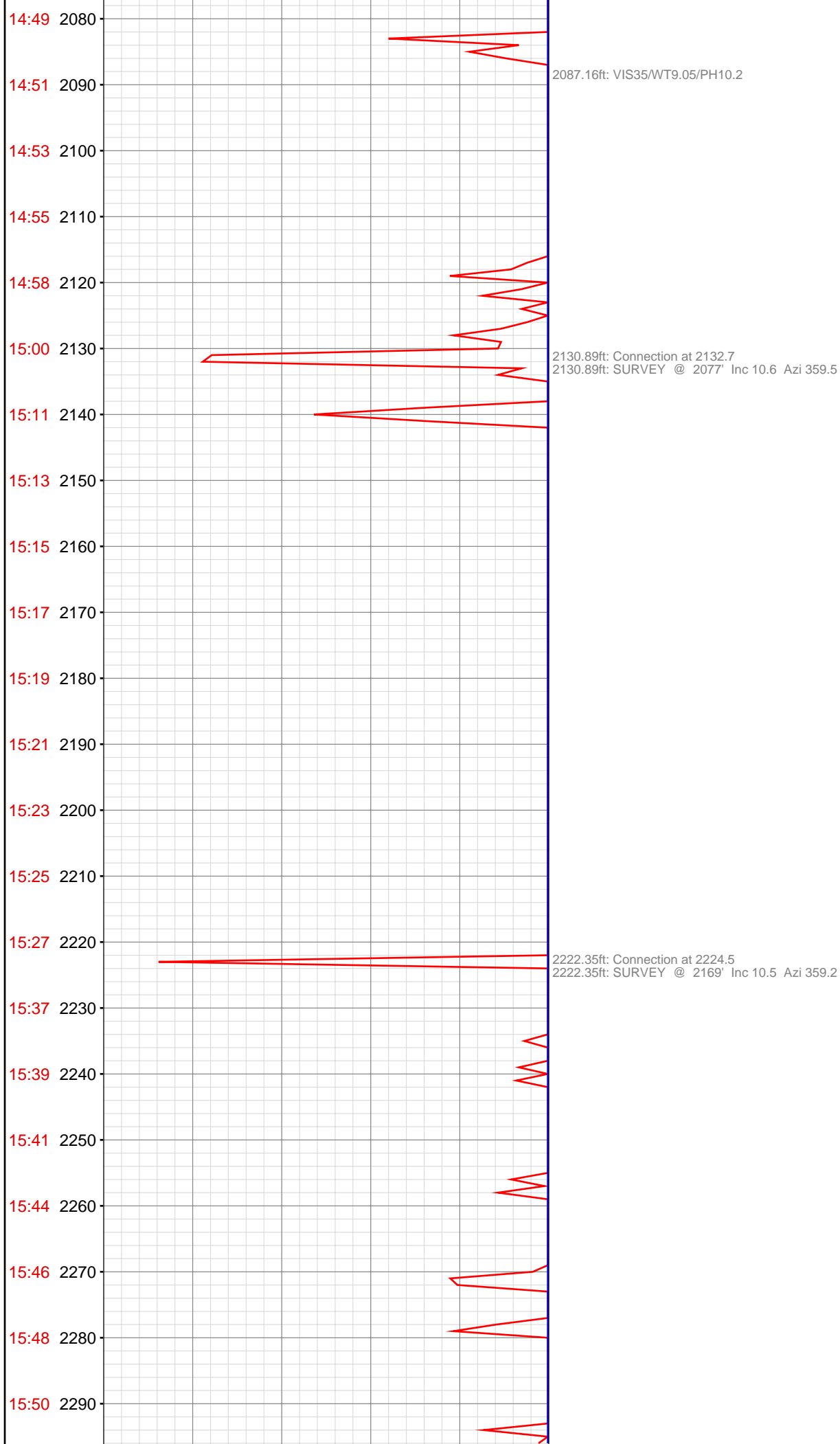


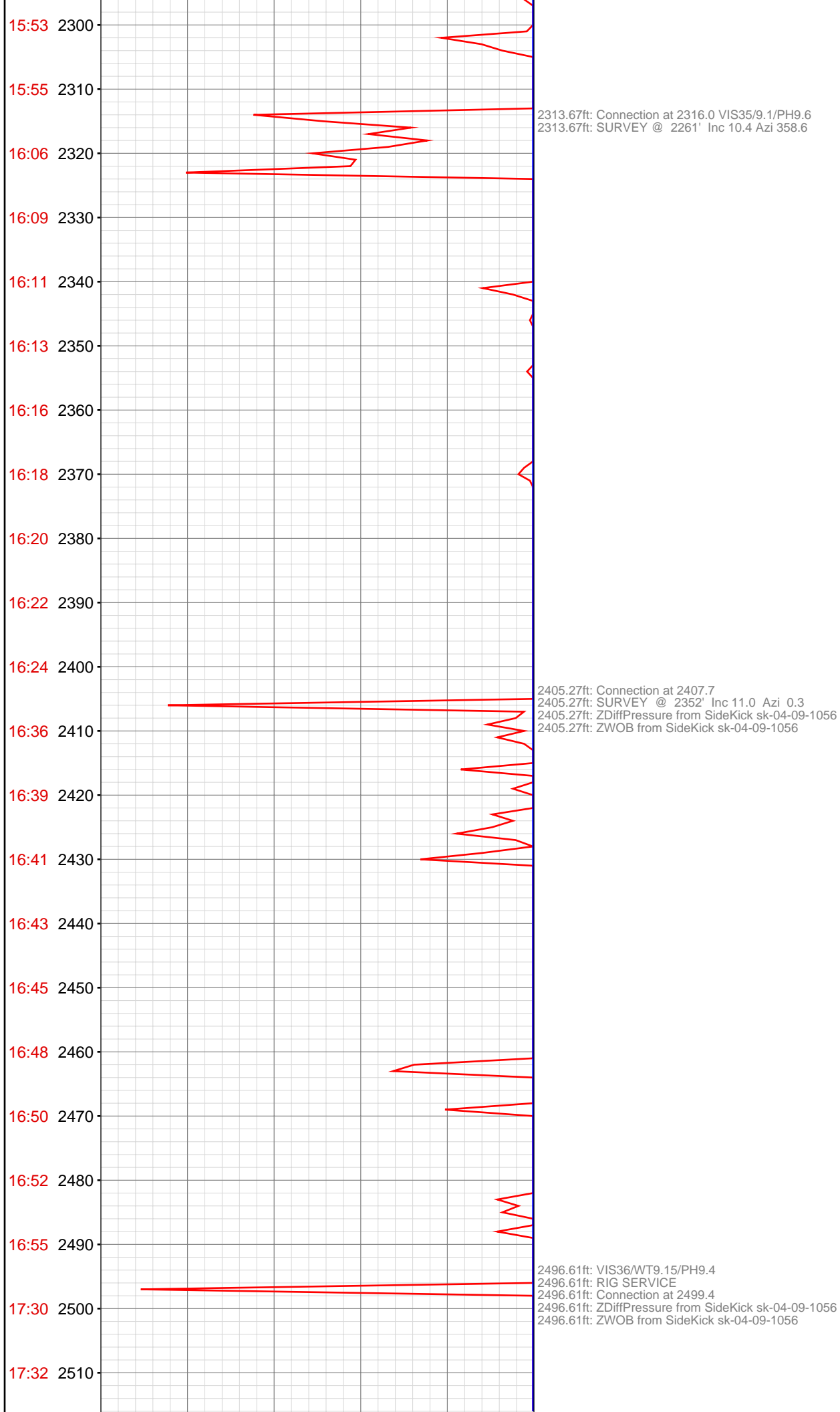


1856.87ft: ZWOB from SideKick sk-04-09-1056 SURVEY @ 1803' Inc 12.1
Azi 359.5
1856.87ft: ZDiffPressure from SideKick sk-04-09-1056

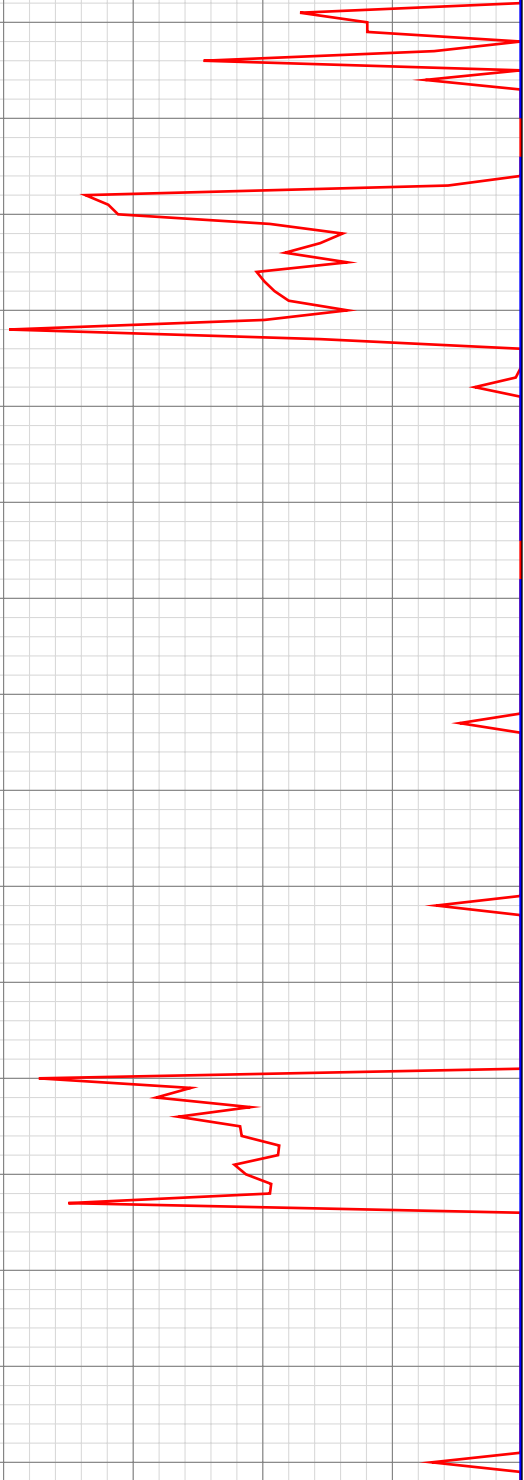
1947.73ft: VIS36/WT9/PH10.2/GPM12
1947.73ft: Connection at 1949.7
1947.73ft: SURVEY @ 359.9 Inc 11.8 Azi 359.9
1953.63ft: SURVEY Correction @ 1894' Inc 11.8 Azi 359.9

2039.31ft: SURVEY @ 1986' Inc 11.6 Azi 0.2 Connection at 2041.6





17:34 2520
17:36 2530
17:38 2540
17:40 2550
17:42 2560
17:44 2570
17:47 2580
17:57 2590
18:01 2600
18:04 2610
18:06 2620
18:08 2630
18:10 2640
18:12 2650
18:14 2660
18:16 2670
18:25 2680
18:29 2690
18:32 2700
18:34 2710
18:36 2720
18:38 2730

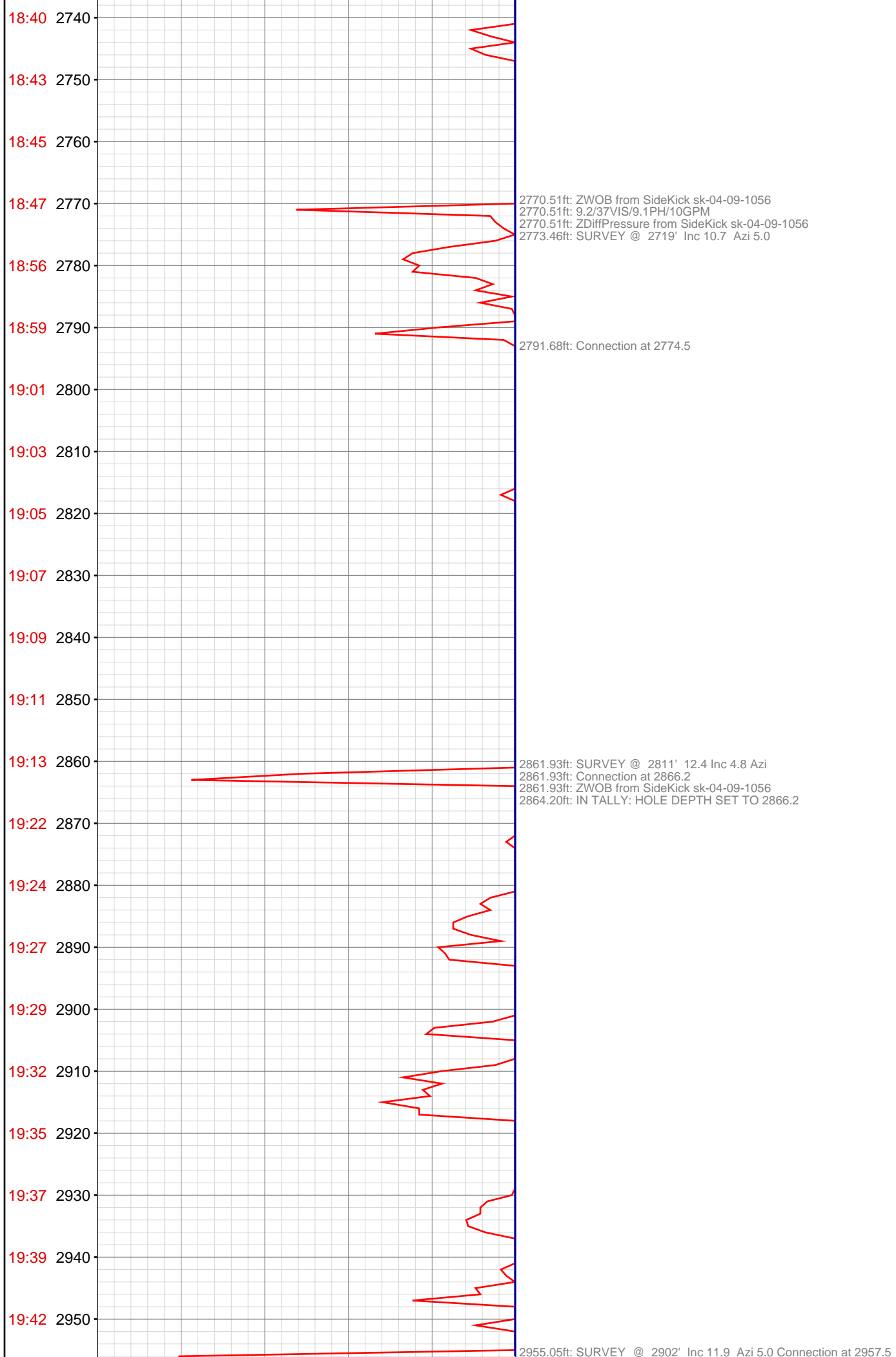


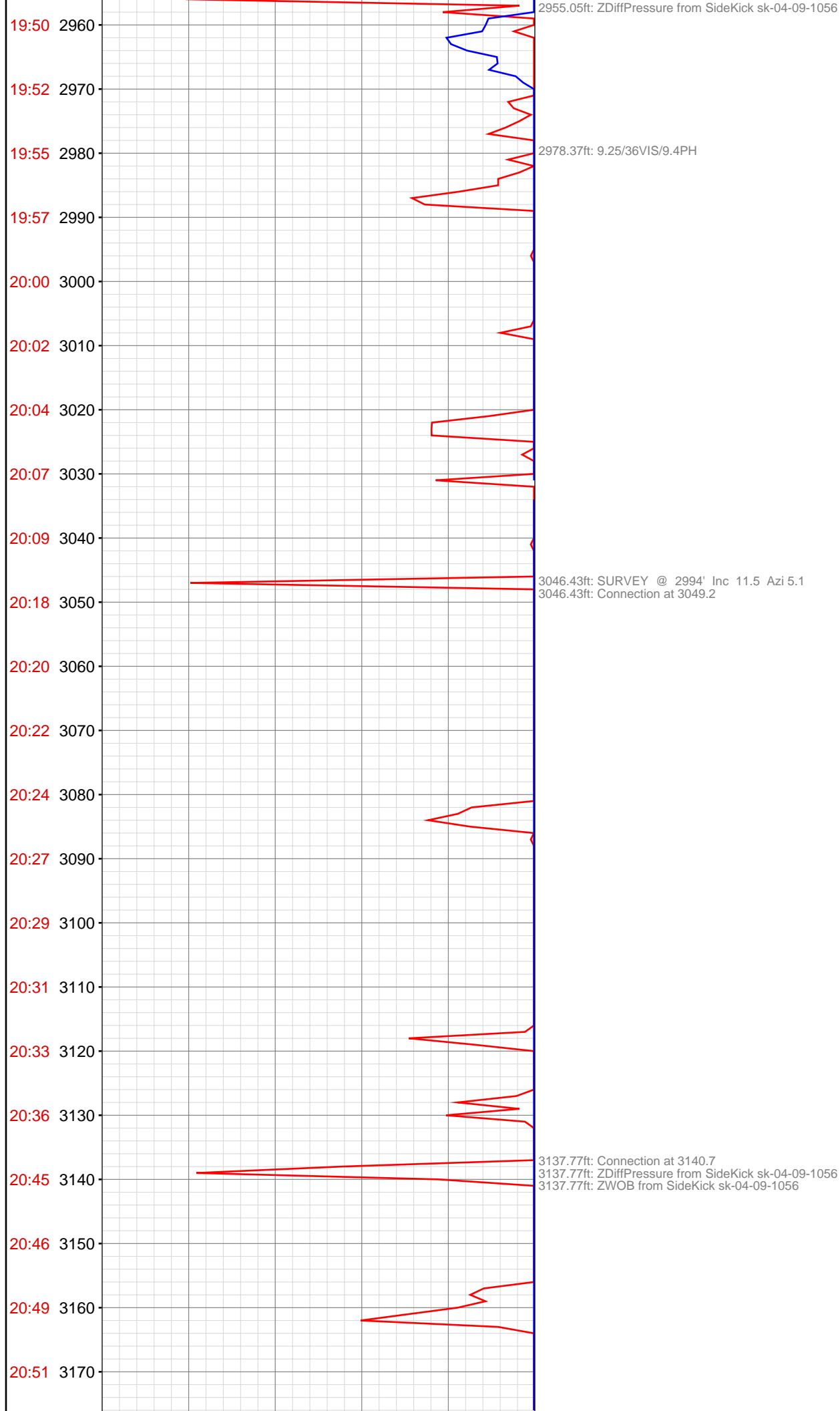
2587.97ft: SURVEY @ 2535 10.2 inc 357.4 azm
2587.97ft: ZDiffPressure from SideKick sk-04-09-1056
2590.50ft: 9.15/36VIS/9.3PH

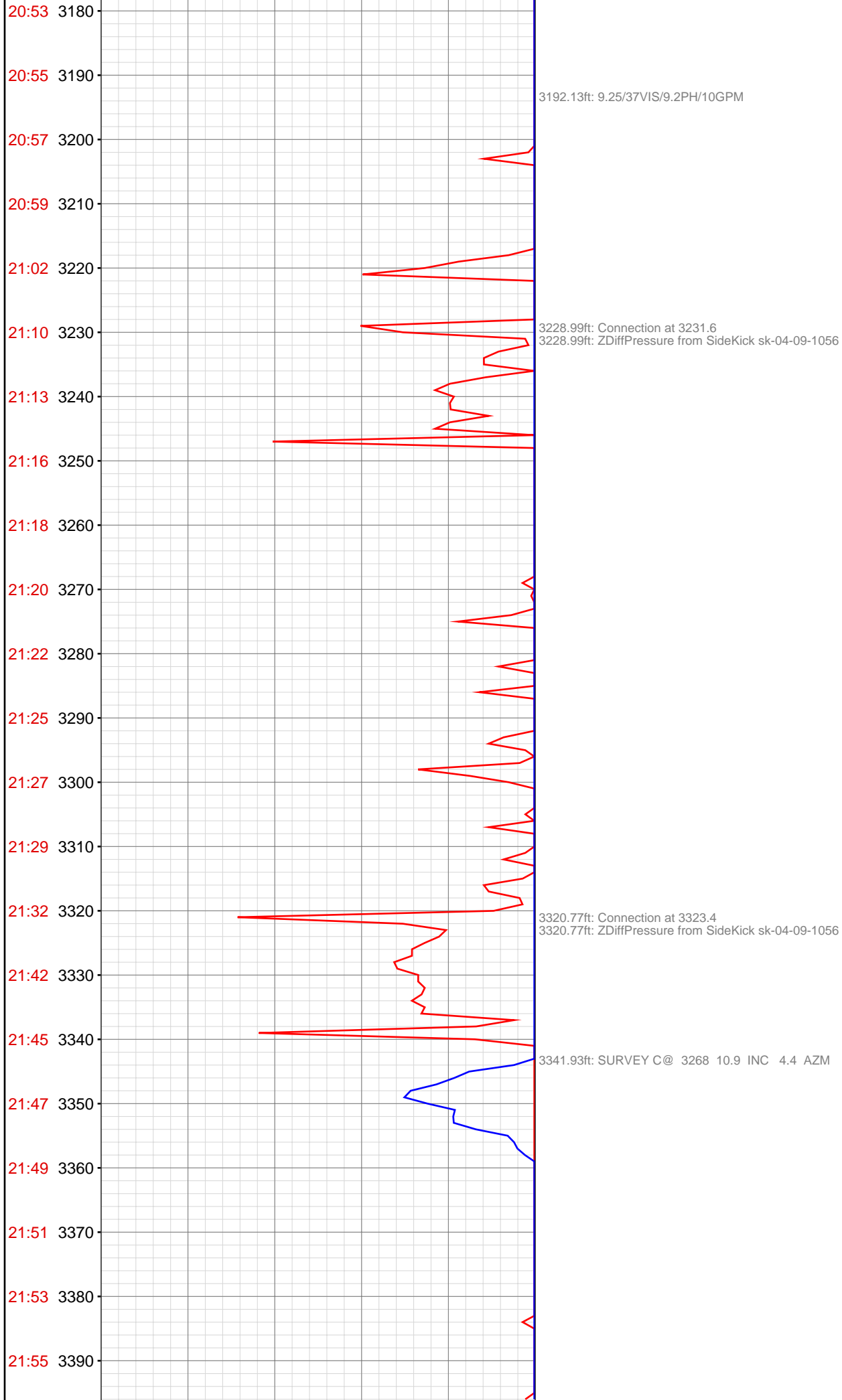
2596.12ft: Connection at 2590.9

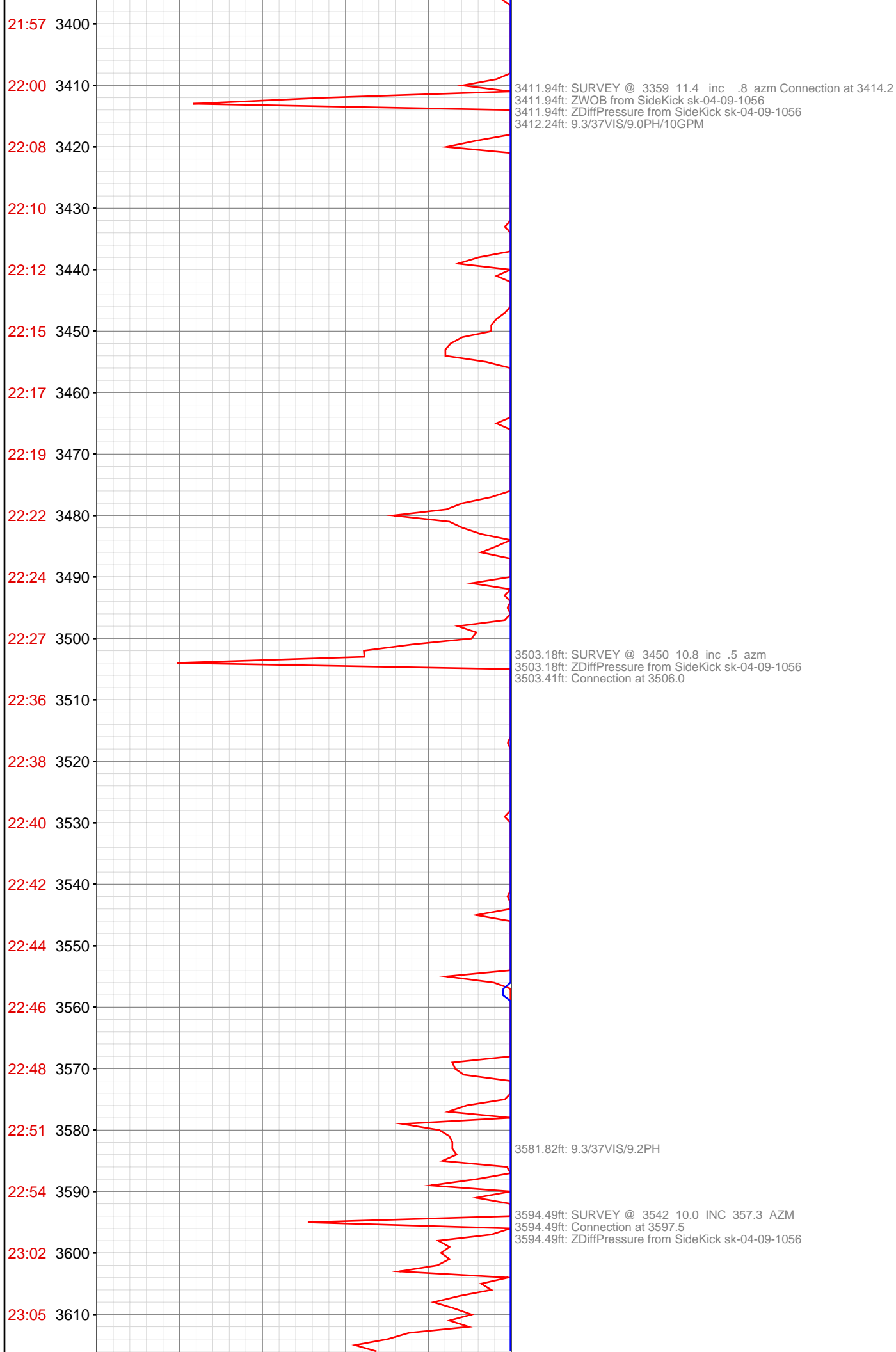
2679.09ft: Connection at 2682.6
2679.09ft: ZWOB from SideKick sk-04-09-1056

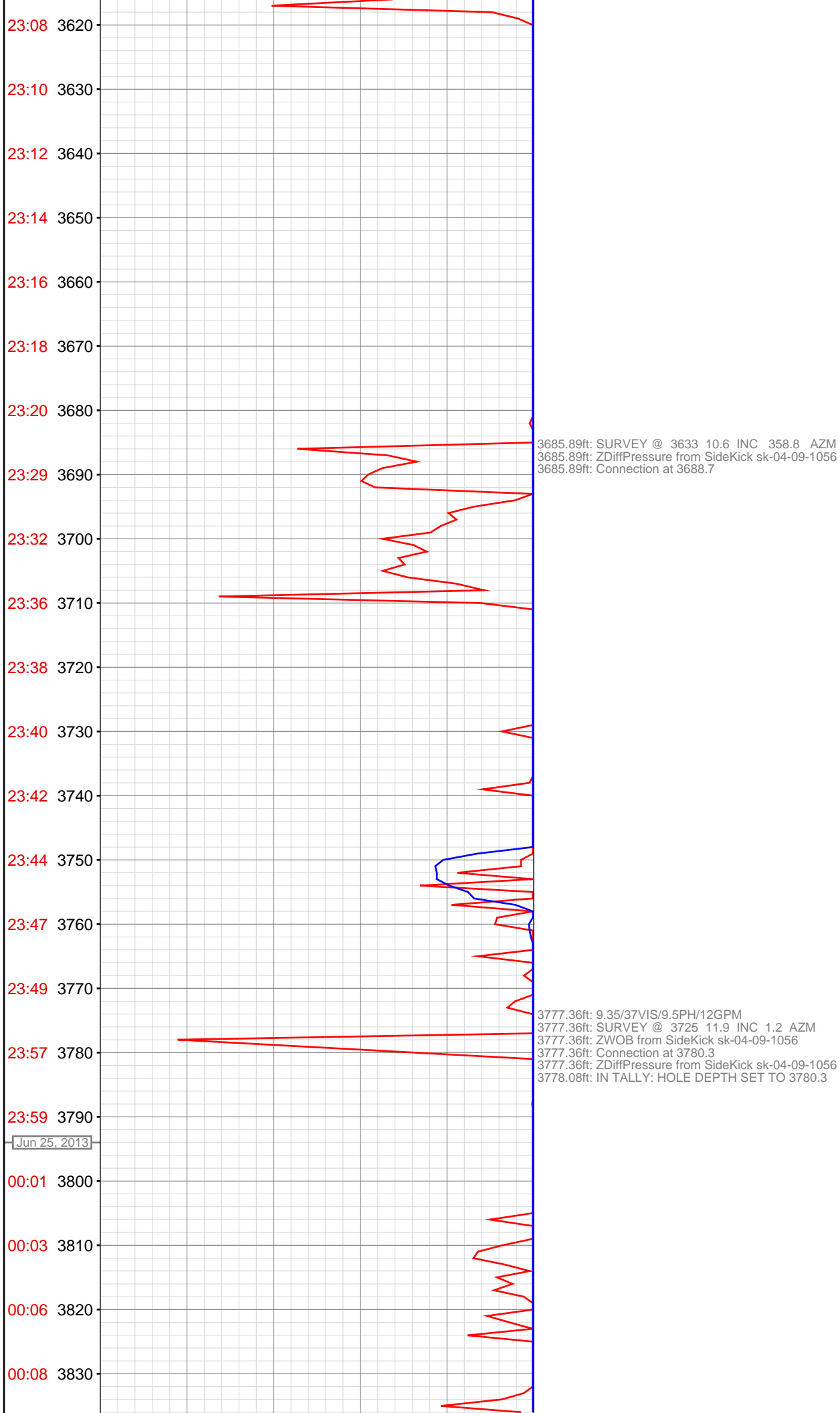
2686.44ft: SURVEY @ 2627' Inc 10.4 Azi 2.7

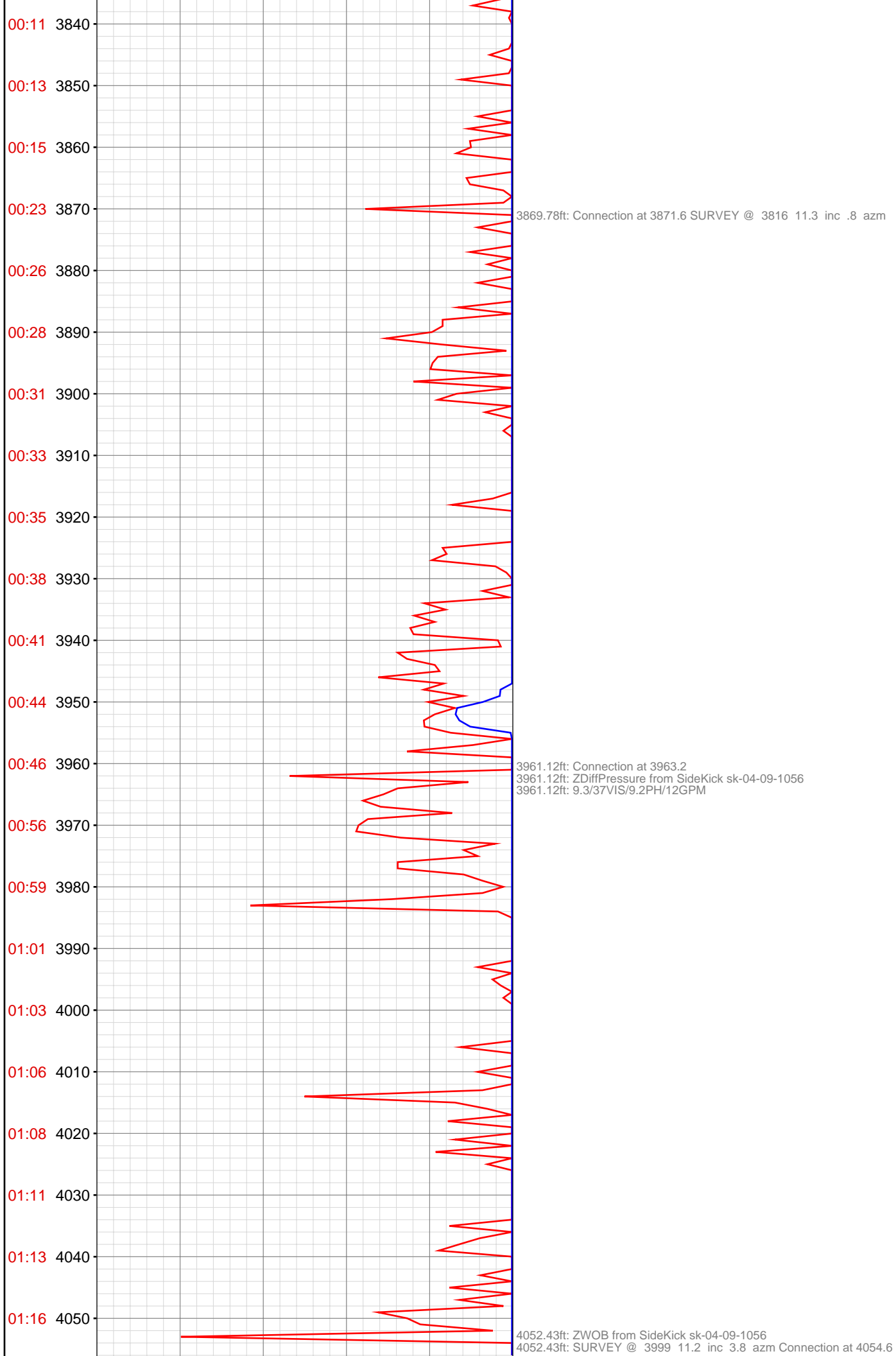


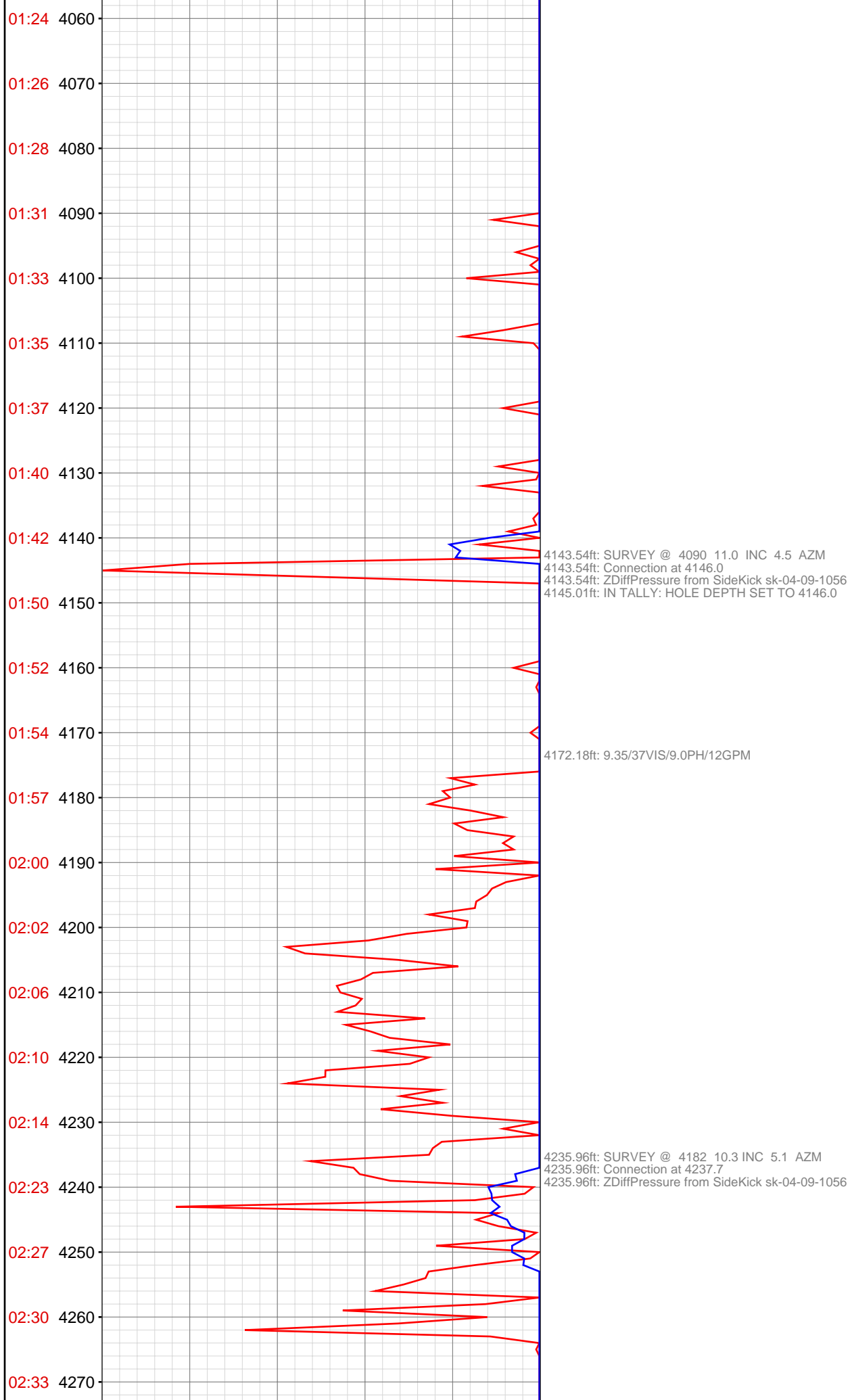


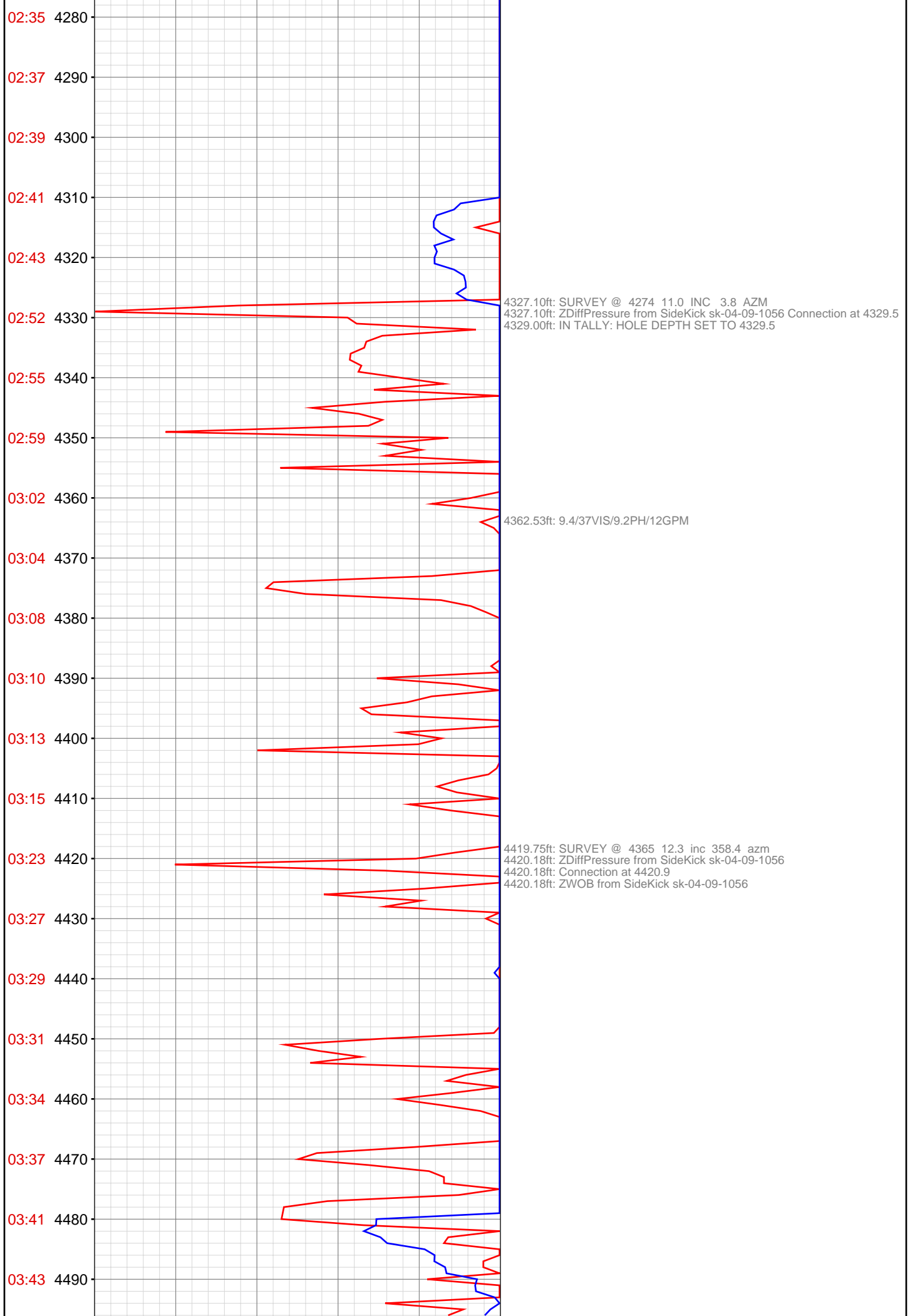


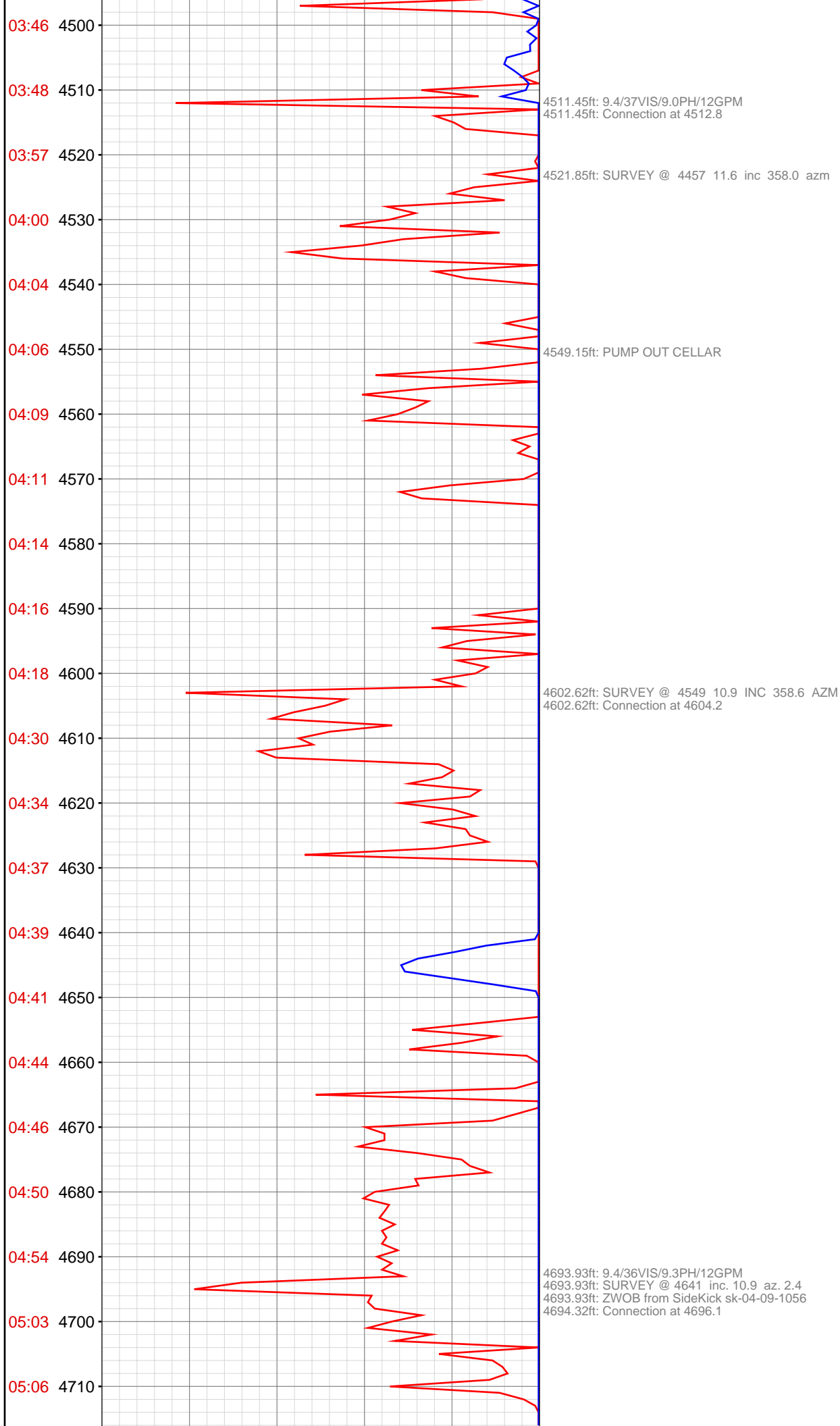


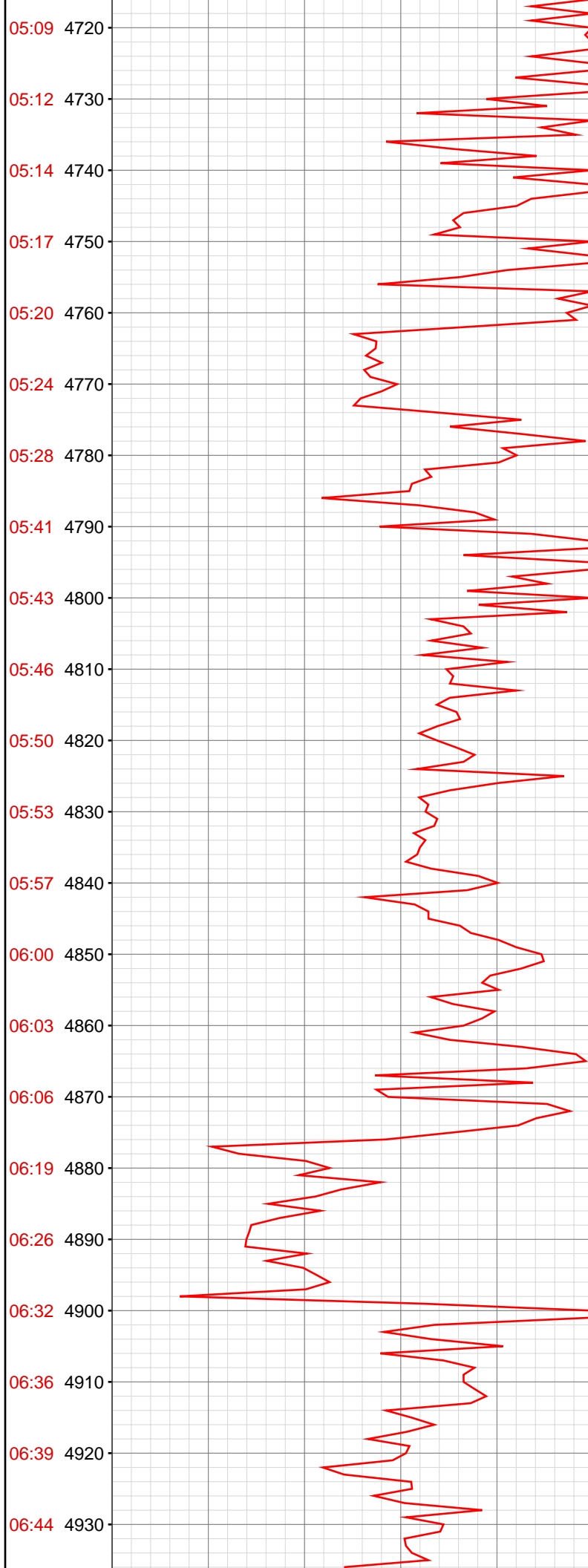








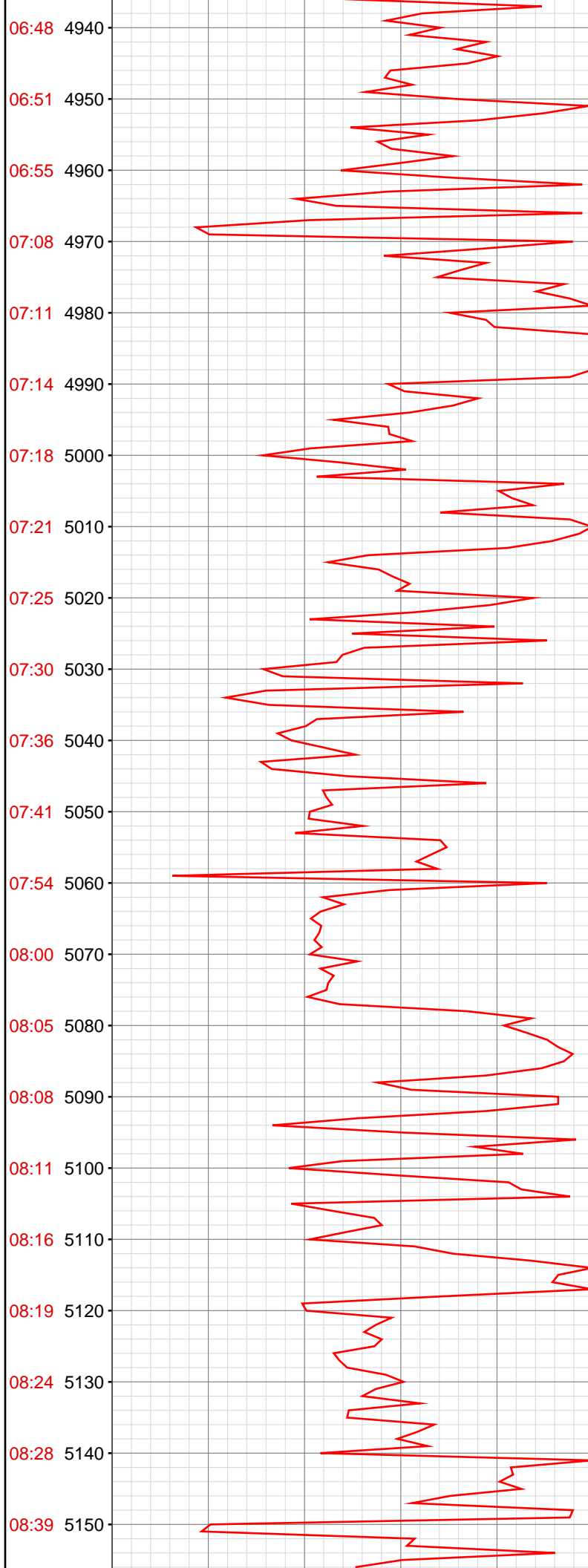




4785.37ft: SURVEY @ 4732 inc. 10.6 az. 1.3
4785.37ft: Connection at 4787.1

4842.55ft: VIS36/WT9.35/PH9.1/GPM12

4876.28ft: Connection at 4878.4
4876.28ft: SURVEY @ 4878 inc. 10.0 az. 359.8
4876.28ft: ZDiffPressure from SideKick sk-04-09-1056

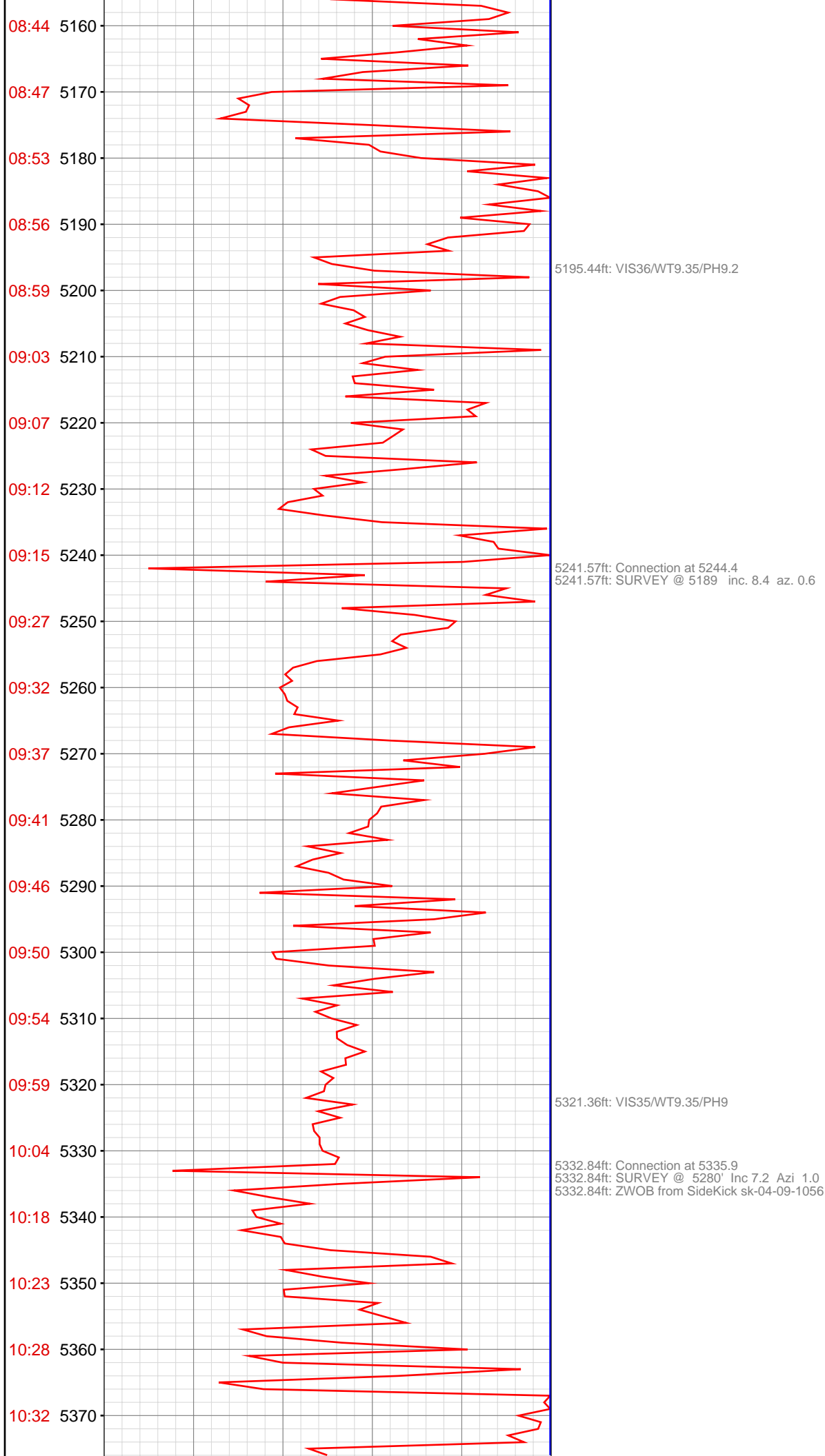


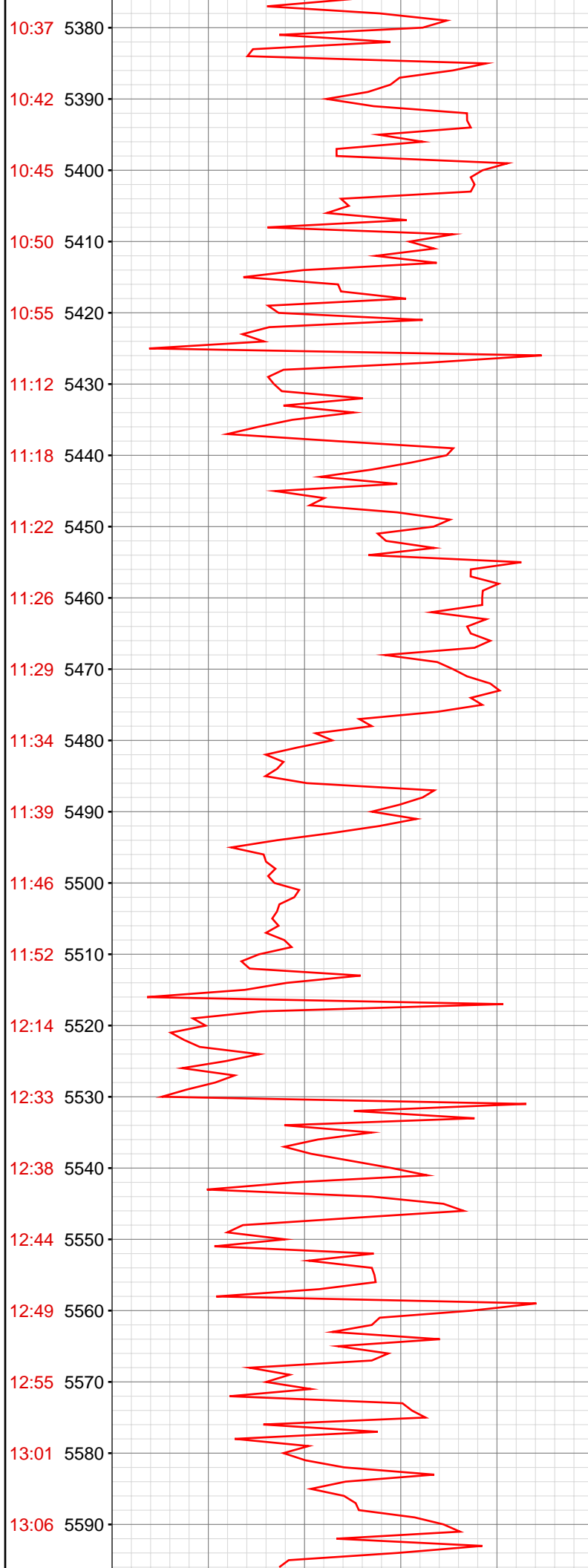
4967.55ft: Connection at 4970.1
4967.55ft: SURVEY @ 4915 inc. 10.8 az. 359.6
4967.55ft: VIS36/WT9.35/PH8.9/GPM12
4967.55ft: ZDiffPressure from SideKick sk-04-09-1056
4967.55ft: ZWOB from SideKick sk-04-09-1056

5058.66ft: TRANSFER 30BBLs FROM UPRIGHT
5058.66ft: Connection at 5061.2
5058.66ft: SURVEY @ 5006 inc. 10.2 az. 0.2
5058.66ft: ZWOB from SideKick sk-04-09-1056
5058.66ft: ZDiffPressure from SideKick sk-04-09-1056

5069.69ft: VIS37/WT9.4/PH9.4

5150.00ft: Connection at 5152.6
5150.00ft: SURVEY @ 5097' Inc 9.5 Azi 359.1





10:37 5380

10:42 5390

10:45 5400

10:50 5410

10:55 5420

11:12 5430

11:18 5440

11:22 5450

11:26 5460

11:29 5470

11:34 5480

11:39 5490

11:46 5500

11:52 5510

12:14 5520

12:33 5530

12:38 5540

12:44 5550

12:49 5560

12:55 5570

13:01 5580

13:06 5590

5412.01ft: TRANSFER 50BBLS FROM UPRIGHT

5424.57ft: Connection at 5427.6
5424.57ft: SURVEY @ 5372' Inc 6.6 Azi 355.1
5424.57ft: ZDiffPressure from SideKick sk-04-09-1056
5424.57ft: ZWOB from SideKick sk-04-09-1056

5507.22ft: VIS36/WT9.35/PH8.8

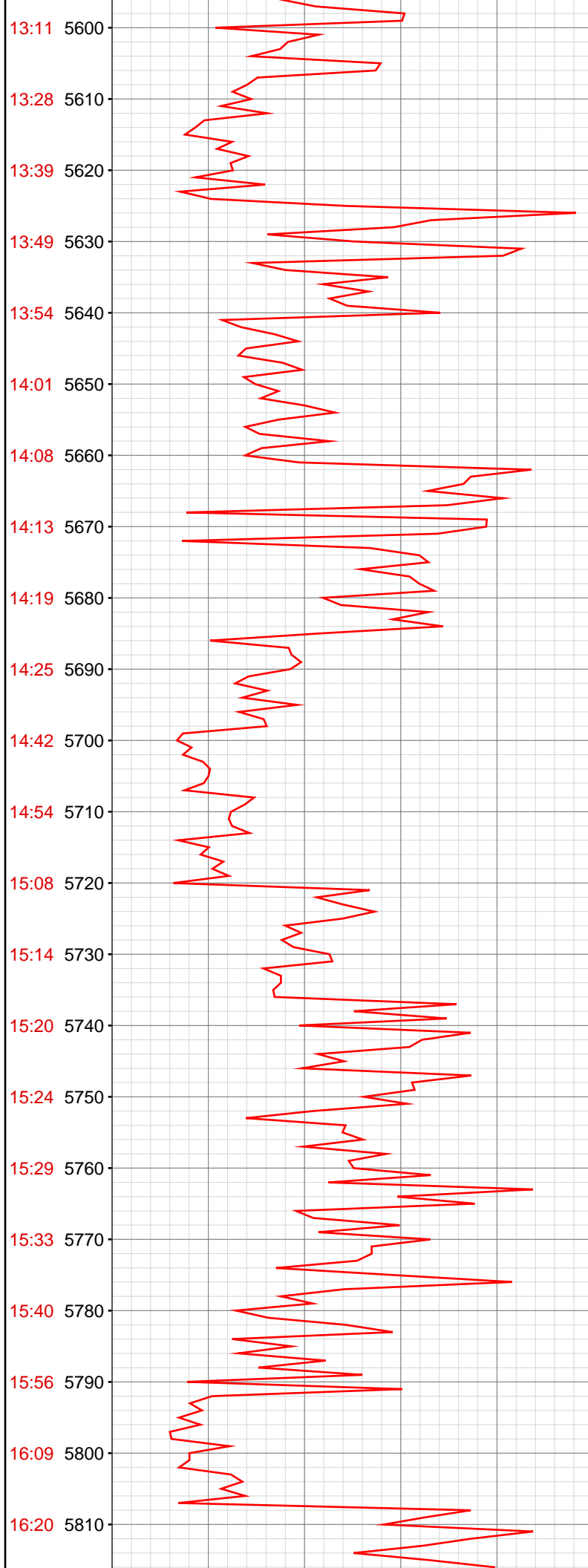
5515.95ft: Connection at 5519.5
5515.95ft: ZDiffPressure from SideKick sk-04-09-1056

5524.15ft: SURVEY @ 5464' Inc 6.0 Azi 351.8

5550.75ft: TRANSFER 50BBLS FROM UPRIGHT

5571.33ft: VIS35/WT9.45

5583.40ft: TRANSFER 50BBLS FROM UPRIGHT



5607.45ft: Connection at 5610.9
5607.45ft: SURVEY @ 5555' Inc 5.5 Azi 359.4

5651.84ft: VIS36/WT9.5/PH8.7/GPM6

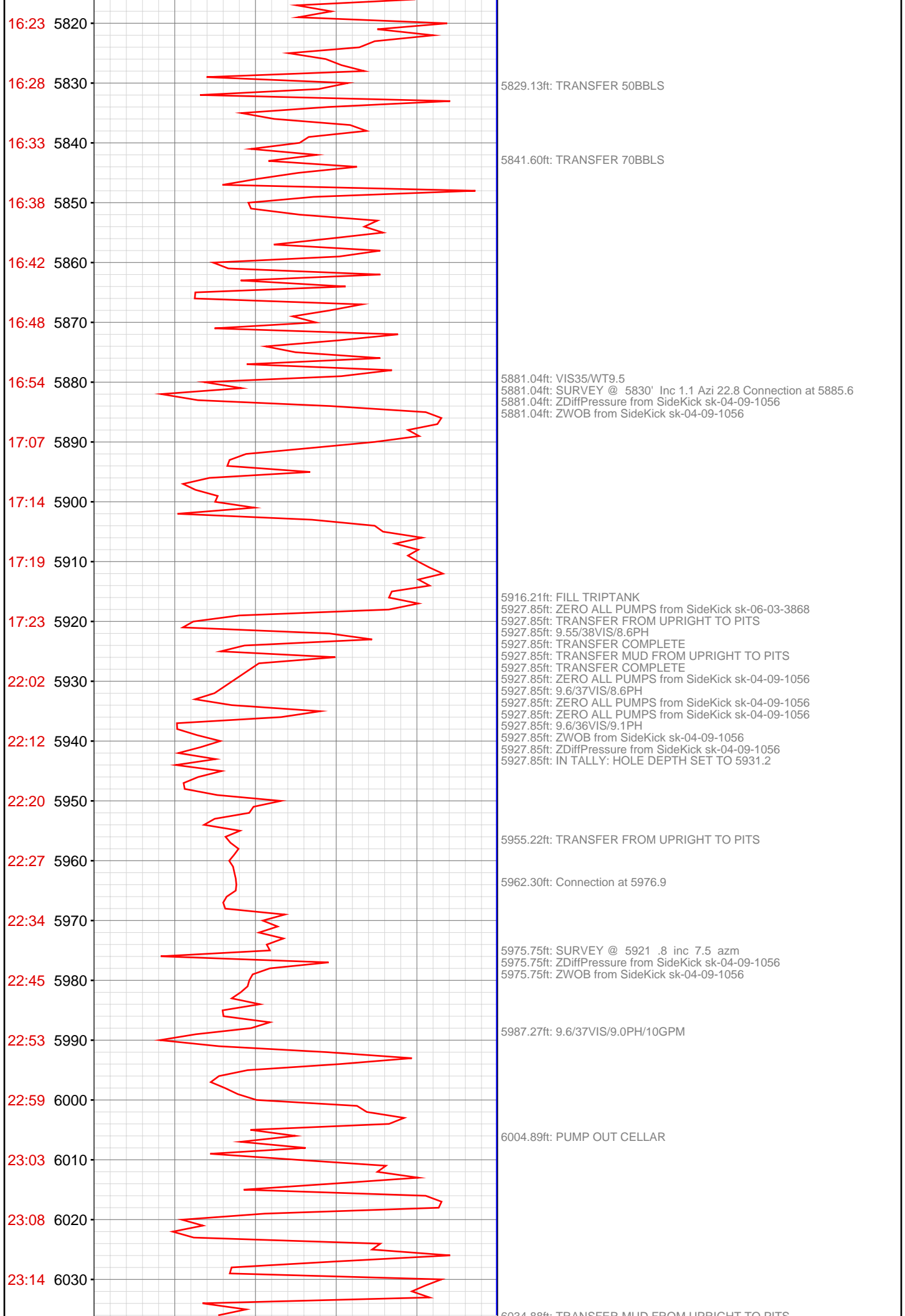
5698.79ft: Connection at 5702.6
5698.79ft: ZDiffPressure from SideKick sk-04-09-1056
5701.84ft: SURVEY @ 5647' Inc 4.7 Azi 12.8

5708.37ft: VIS37/WT9.5

5719.85ft: ZDiffPressure from SideKick sk-04-09-1056

5789.90ft: Connection at 5794.0
5789.90ft: ZDIFF from DHC
5792.13ft: SURVEY @ 5739 INC. 2.8 AZ. 20.8

5796.29ft: VIS36/WT9.5



6067.42ft: SURVEY @ 6013 .6 inc 330.3 azm
6067.42ft: ZDiffPressure from SideKick sk-04-09-1056
6068.08ft: Connection at 6068.3

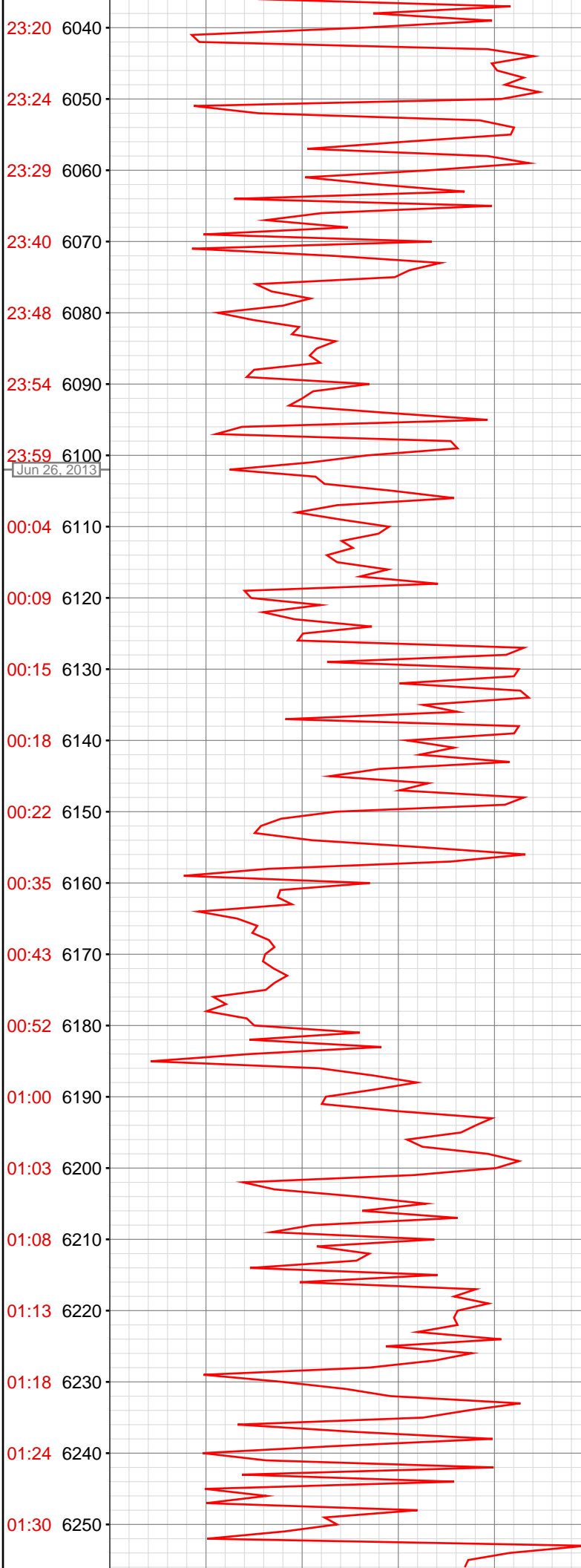
6075.72ft: TRANSFER COMPLETE

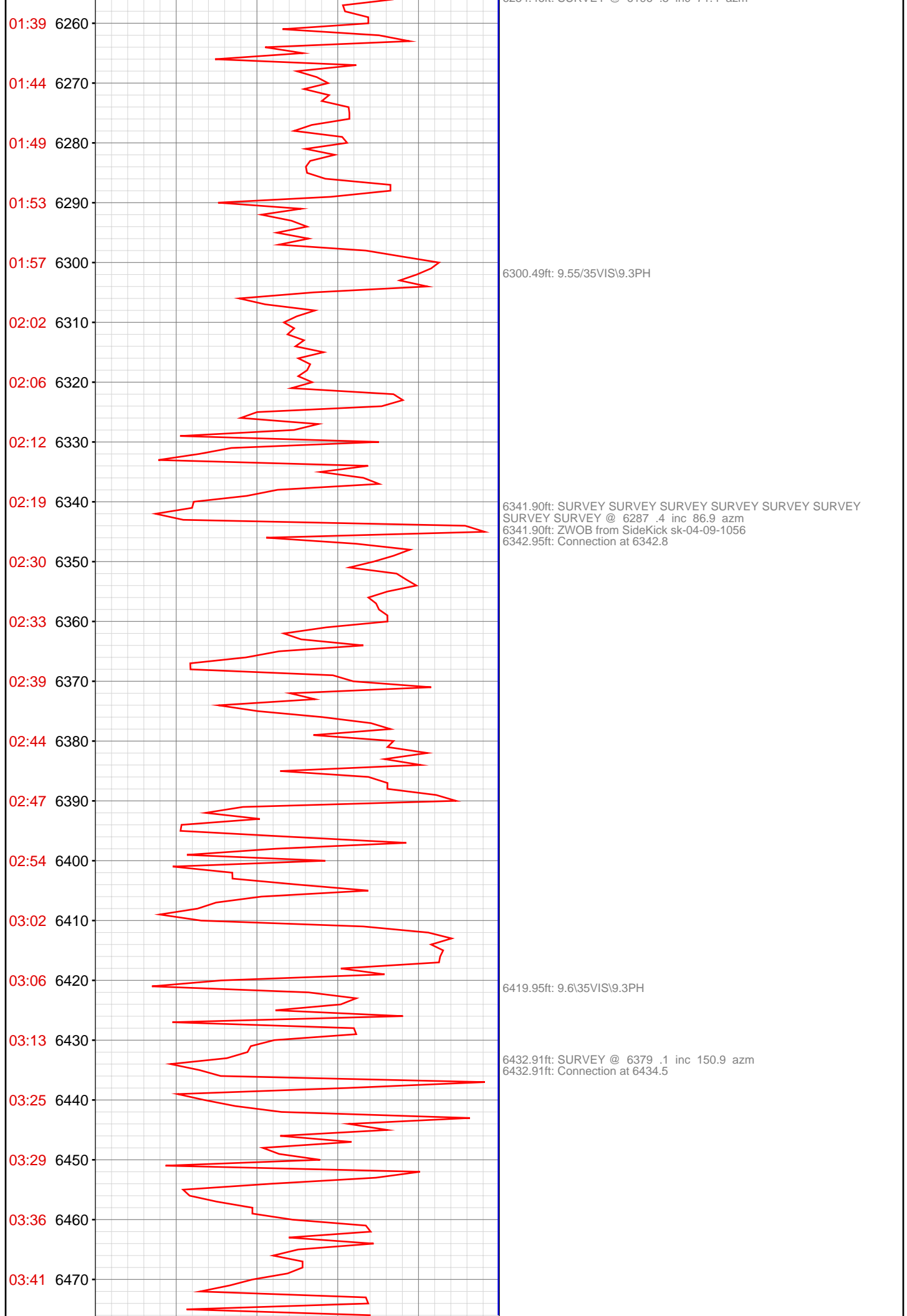
6106.86ft: 9.55/36VIS/9.2PH/10GPM

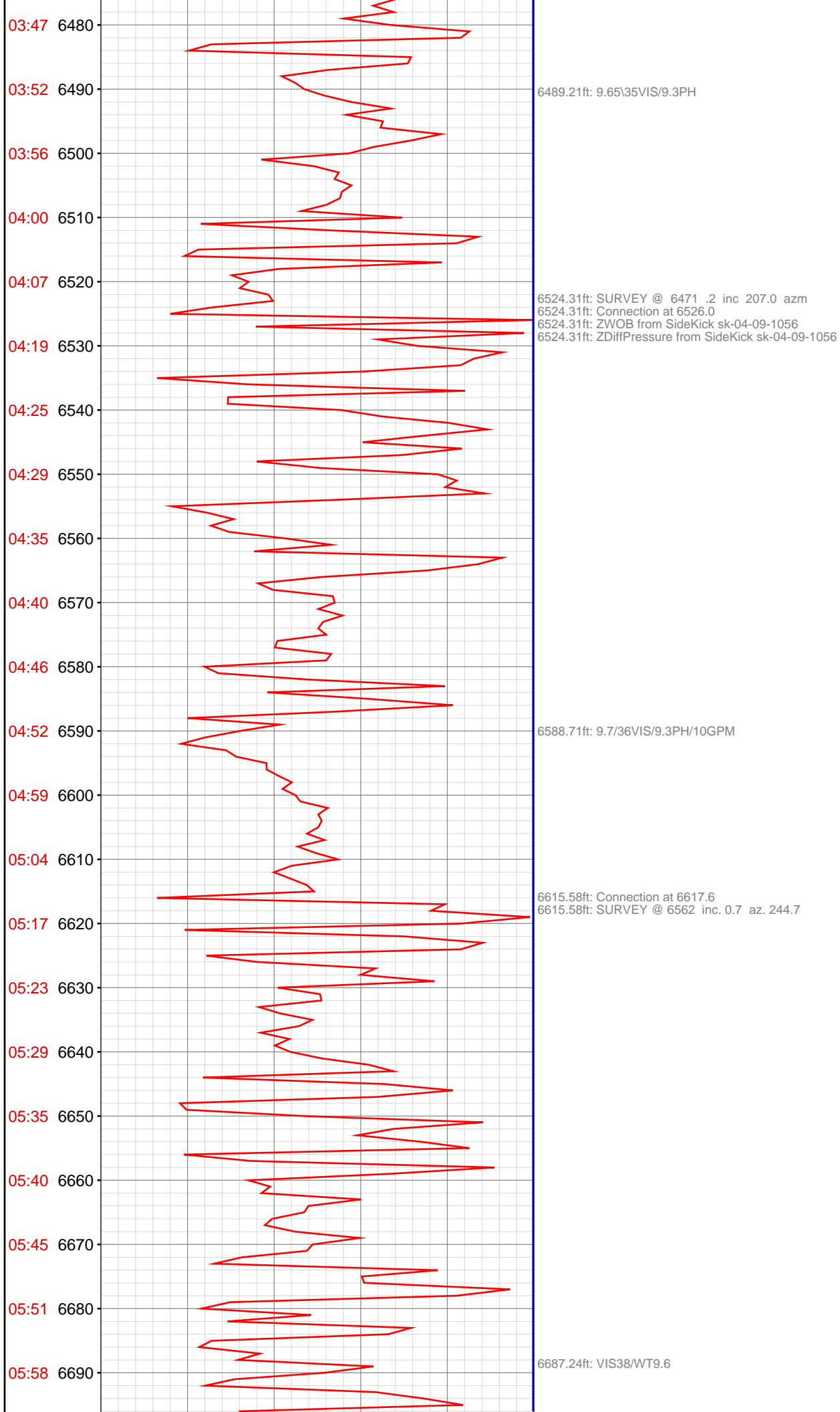
6158.92ft: SURVEY @ 6104 .8 INC 307.3 AZM
6162.80ft: Connection at 6159.9

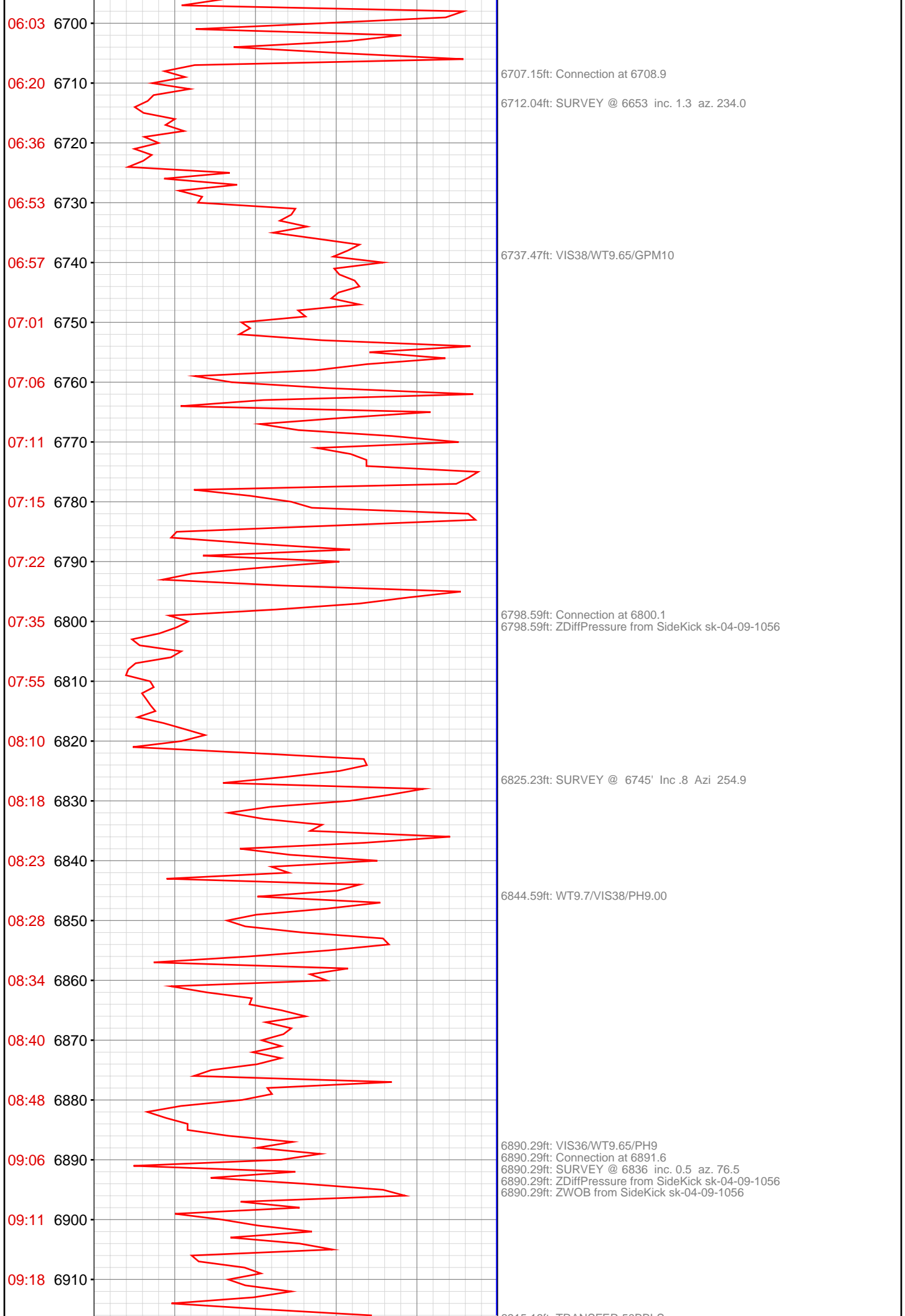
6182.25ft: 9.55/38VIS/9.3PH/10GPM
6184.55ft: ZWOB from SideKick sk-04-09-1056

6250.62ft: Connection at 6251.5
6250.62ft: Connection at 6342.8
6254.46ft: SURVEY @ 6196 .5 inc 71.4 azm









6915.16ft: TRANSFER SUBBLS

6968.11ft: VIS36/WT9.65/PH8.8

6981.53ft: Connection at 6982.8
6981.53ft: SURVEY @ 6927' Inc .5 Azi 67.4

7072.93ft: Connection at 7074.6 SURVEY @ 7019' Inc .1 Azi 318.1
7072.93ft: ZDiffPressure from SideKick sk-04-09-1056
7072.93ft: ZWOB from SideKick sk-04-09-1056

11:54 7140
11:59 7150
12:04 7160
12:16 7170
12:21 7180
12:28 7190
12:32 7200
12:38 7210
12:42 7220
12:50 7230
12:54 7240
12:57 7250
13:16 7260
13:21 7270
13:28 7280
13:33 7290
13:38 7300
13:44 7310
13:49 7320
13:56 7330
14:01 7340
14:14 7350

7139.14ft: VIS36/WT9.7/PH9

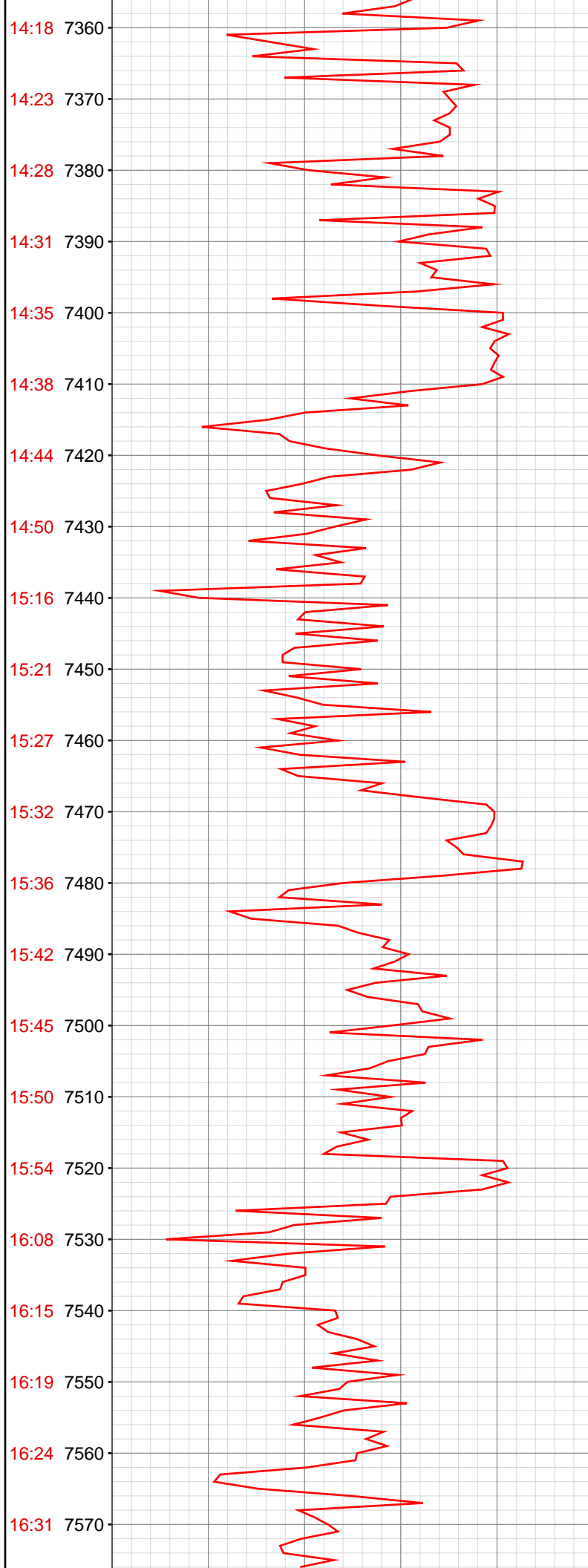
7164.27ft: Connection at 7166.3
7164.27ft: SURVEY @ 7111' Inc .2 Azi 253.7

7245.90ft: VIS37/WT9.75/PH9

7255.45ft: Connection at 7257.6
7255.45ft: SURVEY @ 7202' Inc .6 Azi 259.9
7255.45ft: ZDiffPressure from SideKick sk-04-09-1056
7255.45ft: ZWOB from SideKick sk-04-09-1056

7342.32ft: VIS36/WT9.8/PH9.4

7346.95ft: Connection at 7349.4
7346.95ft: SURVEY @ 7294' Inc 1.0 Azi 259.2



7438.42ft: VIS37/WT9.8/PH9.2
7438.42ft: Connection at 7441.0
7438.42ft: ZDiffPressure from SideKick sk-04-09-1056
7439.17ft: SURVEY @ 7385' Inc 1.4 Azi 266.4

7527.92ft: VIS38/WT9.85
7529.72ft: Connection at 7531.9
7529.72ft: SURVEY @ 7476' Inc 2.0 Azi 270.1

16:37 7580
16:41 7590
16:47 7600
16:51 7610
16:56 7620
17:32 7630
17:37 7640
17:42 7650
17:47 7660
17:52 7670
17:57 7680
18:02 7690
18:06 7700
18:12 7710
18:23 7720
18:29 7730
18:34 7740
18:40 7750
18:46 7760
18:52 7770
19:00 7780
19:09 7790



7620.96ft: RIG SERVICE
7620.96ft: Connection at 7622.9
7620.96ft: SURVEY @ 7567' Inc 2.2 Azi 263.9
7620.96ft: ZDiffPressure from SideKick sk-04-09-1056
7623.13ft: VIS36/WT9.85/PH9.1

7696.39ft: 9.95/35VIS/9.1PH/12GPM

7711.94ft: Connection at 7714.5
7711.94ft: ZDiffPressure from SideKick sk-04-09-1056
7711.94ft: ZWOB from SideKick sk-04-09-1056
7711.94ft: ZDiffPressure from SideKick sk-04-09-1056

7751.08ft: PUMP OUT CELLAR

7776.77ft: 9.9\36VIS\9.3PH/

