

VAL ENERGY, INC.

LOCATION DRAWING FOR

CHRISTINA #1-2
SECTION 2, T20S, R56W, 6th P.M.
1550' FNL 1010' FEL

FIGURE #5

SCALE: 1" = 200'

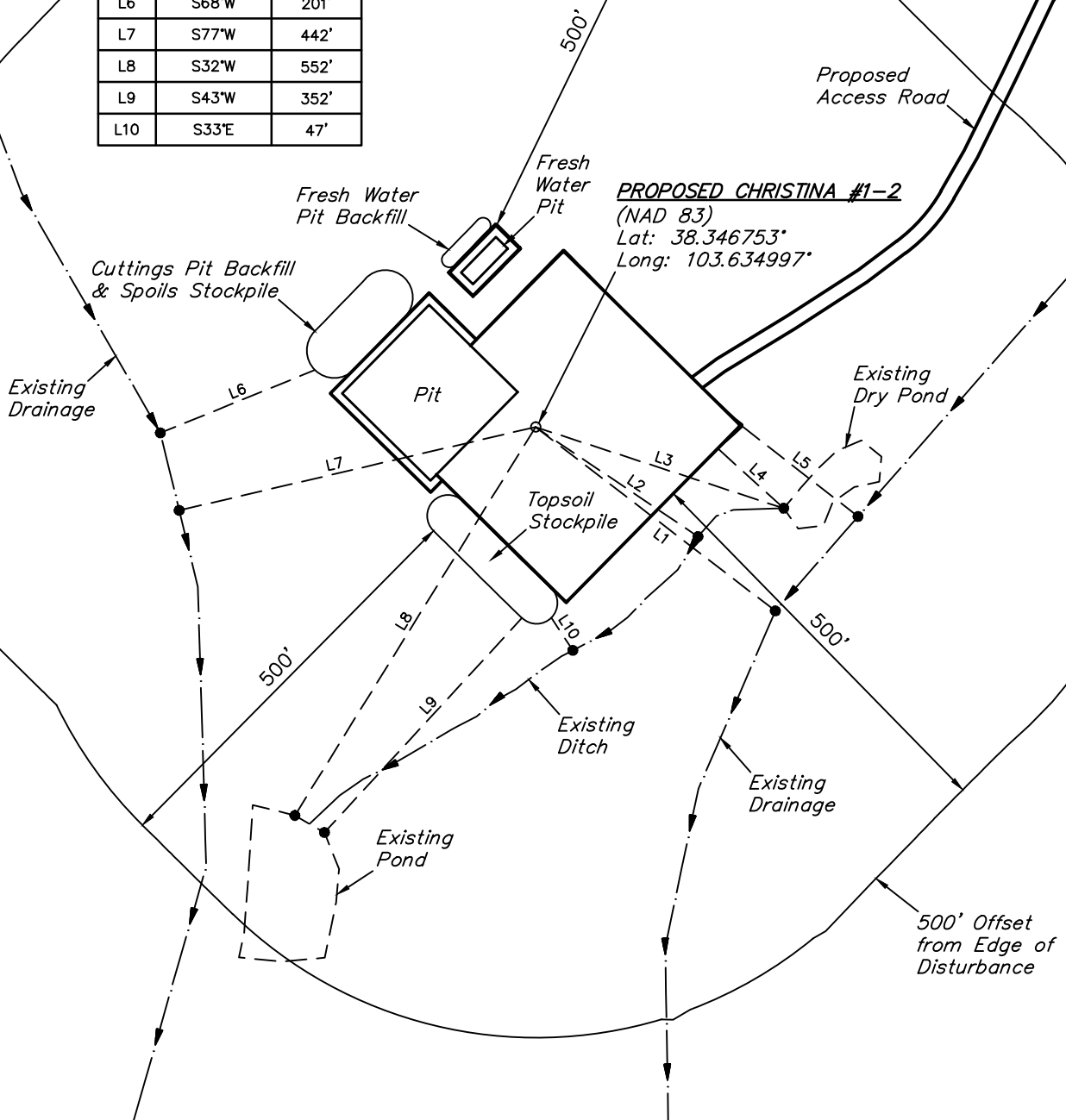
DATE SURVEYED: 10-30-13

SURVEYED BY: DALLAS NIELSEN

DATE DRAWN: 11-06-13

DRAWN BY: J.S.

LINE TABLE		
LINE	DIRECTION	LENGTH
L1	S53°E	365'
L2	S56°E	237'
L3	S72°E	315'
L4	S48°E	107'
L5	S52°E	177'
L6	S68°W	201'
L7	S77°W	442'
L8	S32°W	552'
L9	S43°W	352'
L10	S33°E	47'



UINTAH ENGINEERING & LAND SURVEYING

85 So. 200 East * Vernal, Utah 84078 * (435) 789-1017

VAL ENERGY, INC.

CHRISTINA #1-2

SECTION 2, T20S, R56W, 6th P.M.

DATE: 11-06-13

WELL NAME: CHRISTINA #1-2		
VISIBLE IMPROVEMENTS FROM PROPOSED WELL		
EXISTING FEATURE	DIRECTION	LENGTH
BUILDING	OVER 1 MILE	
BUILDING UNIT	OVER 1 MILE	
HIGH OCCUPANCY BUILDING UNIT	OVER 1 MILE	
DESIGNATED OUTSIDE ACTIVITY AREA	OVER 1 MILE	
PUBLIC ROAD	OVER 1 MILE	
ABOVE GROUND UTILITY	OVER 1 MILE	
RAILROAD	OVER 1 MILE	
PROPERTY LINE	S89°E	1010'