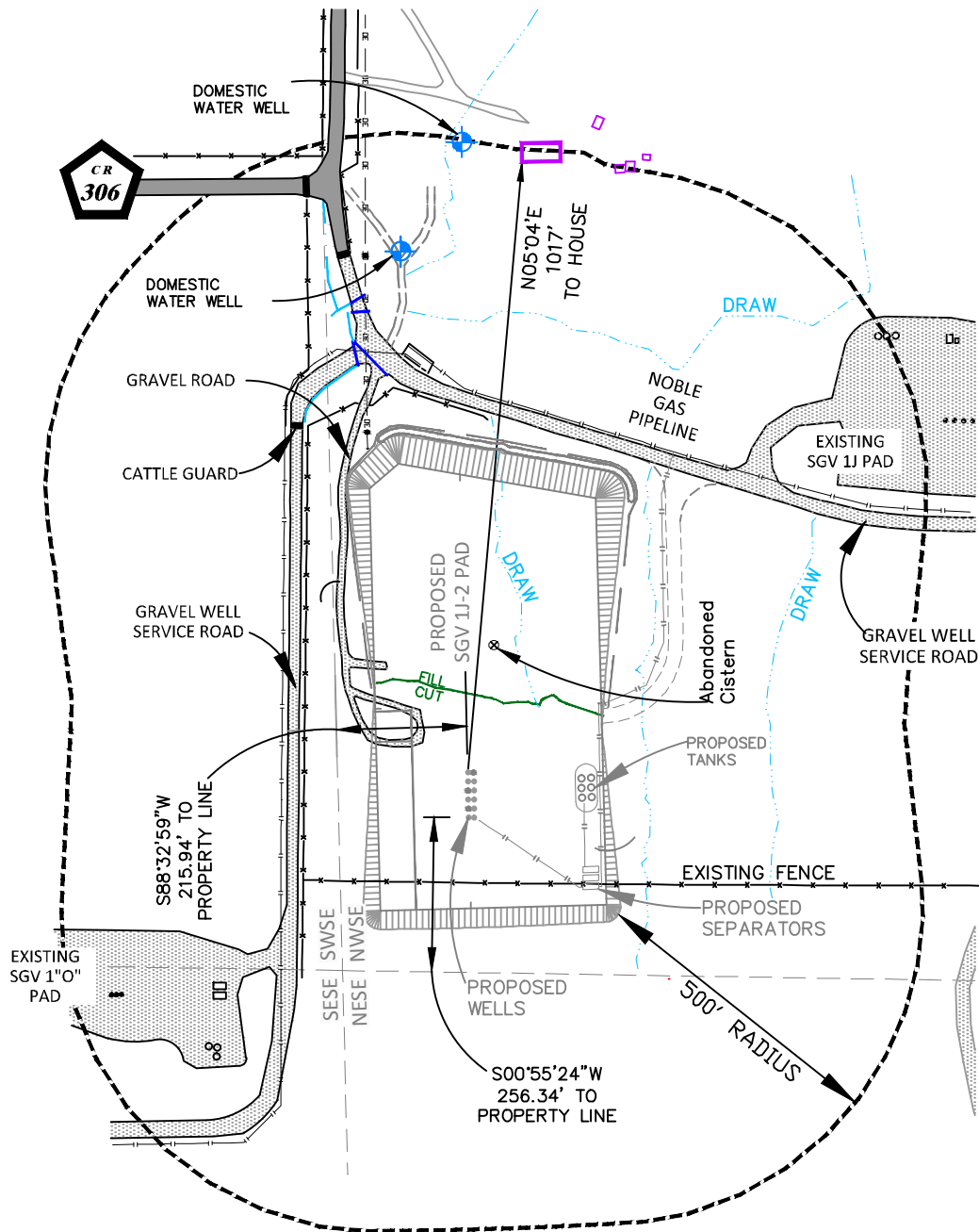
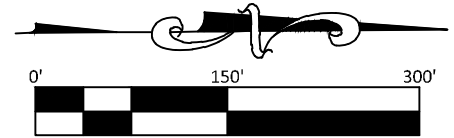


# NOBLE ENERGY, INC. SGV 1J-2 PAD

EXISTING IMPROVEMENTS WITHIN  
500' RADIUS FROM EDGE OF  
PROPOSED DISTURBANCE



## CONFIDENTIALITY NOTES:

The information contained in this plat is legally privileged and confidential information intended only for the use of the recipients. If you are not the intended recipients, you are hereby notified that any use, dissemination, distribution or copying of this information is strictly prohibited.

**SGV 1J-2 PAD**



**WILLIAM H. SMITH  
& ASSOCIATES P.C.**  
SURVEYING CONSULTANTS  
550 EAST SECOND NORTH  
GREEN RIVER, WY  
PHONE: 307-875-3638  
307-875-3639  
www.whsmithpc.com

DRAWN BY: RCR	CHECKED BY: RCR
PROJECT NO: 001	JOB NO: 2011700
REVISIONS: Increase radius to 500'. 1/22/2014 RR	

LOCATION DRAWING  
EXISTING IMPROVEMENTS  
WITHIN 400' RADIUS OF EDGE  
OF DISTURBANCE FOR  
PROPOSED SGV 1J-2 PAD

LOCATION:  
WITHIN NW4 SE4  
SECTION 1,  
T 8 S, R 96 W,  
6TH PM.  
GARFIELD COUNTY,  
COLORADO

## LOCATION DRAWING

NOBLE ENERGY, INC  
SGV DEEP UNIT 11-31H, 18-14H &  
18-24H

FOR NOBLE ENERGY, INC.

SCALE: 1"=300'	EXHIBIT 2
DATE: 10/31/2011	SHEET 1 OF 1