

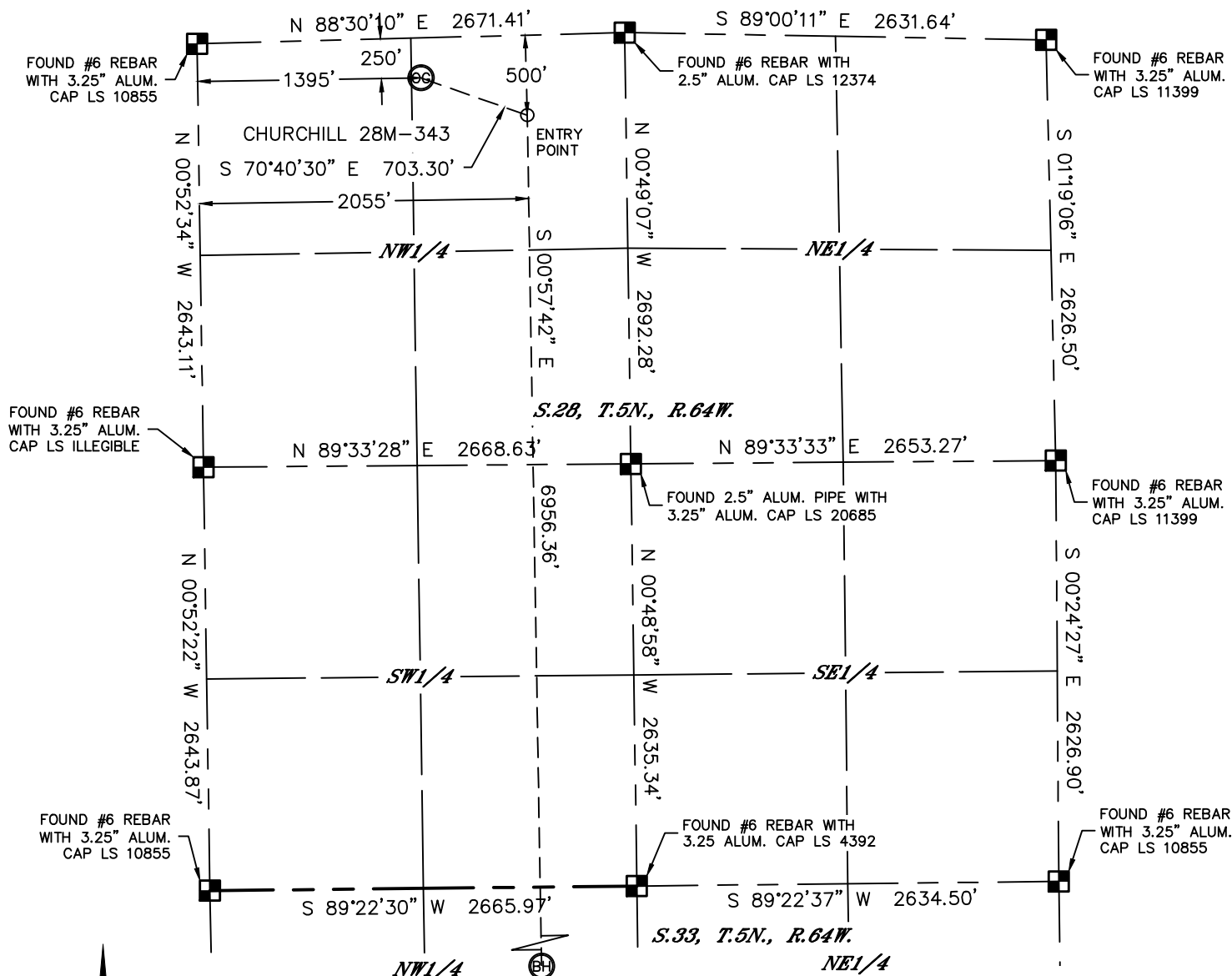


Lat40°, Inc. 1635 Foxtrail Drive, Suite 325 Loveland, CO 970-776-3321

# WELL LOCATION CERTIFICATE

THIS MAP DOES NOT REPRESENT A BOUNDARY SURVEY

SECTION: 28  
TOWNSHIP: 5N  
RANGE: 64W



In accordance with a request from Jake Bragg with PDC ENERGY Lat40°, Inc. has determined the surface location of the CHURCHILL 28M-343 to be 250' from the NORTH line and 1395' from the WEST line as measured at right angles from the section lines of Section 28, Township 5 North, Range 64 West and the bottom hole to be 2138' from the NORTH line and 2055' from the WEST line as measured at right angles from the section lines of Section 33, Township 5 North, Range 64 West of the Sixth Principal Meridian, County of Weld, State of Colorado.

I hereby state that this Well Location Certificate was prepared by me, or under my direct supervision, that the fieldwork was completed on 11/7/2013, for and on behalf of PDC ENERGY. That this is not a Land Survey Plat or an Improvement Survey Plat, and that it is not to be relied upon for establishment of fence, building, or other future improvement lines.

**SURFACE LOCATION**  
LAT: 40.37691°N  
LONG: 104.55928°W  
PDOP: 2.1  
ELEV: 4633'  
1/4,1/4: NE1/4NW1/4

**BOTTOM HOLE**  
LAT: 40.35716°N  
LONG: 104.55676°W

**ENTRY POINT**  
LAT: 40.37625°N  
LONG: 104.55691°W

## LEGEND

- = ALIQUOT MONUMENT AS DESCRIBED  
○ = CALCULATED POSITION

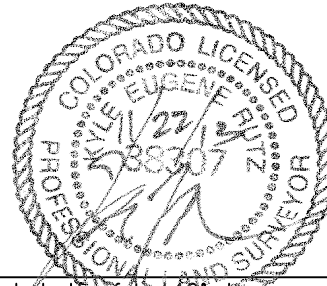
## SHEET 1 OF 2

Kyle E. Rutz—On behalf of Lat40°, Inc.  
Colorado Licensed Professional  
Land Surveyor No. 38307

DATE: 11/21/2013  
PROJECT#: 2013151

## NOTE:

- 1) Bearings shown are Grid Bearings of the Colorado State Plane Coordinate System, North Zone, North American Datum 1983/2007. The lineal dimensions as contained herein are based upon the "U.S. Survey Foot."
- 2) Ground elevations are based on an observed GPS elevation (NAVD 1988 DATUM).
- 3) IMPROVEMENTS: See LOCATION DRAWING for all visible improvements within 500' of disturbed area.
- 4) SURFACE USE: RANGELAND
- 5) INSTRUMENT OPERATOR: BRIAN ROTTINGHAUS
- 6) NEAREST CULTURAL ITEMS:  
BUILDING: ±643' NE  
BUILDING UNIT: ±740' N  
HIGH OCCUPANCY BUILDING UNIT: ±2180' NE  
DESIGNATED OUTSIDE ACTIVITY AREA: 5280'+  
PUBLIC ROAD: (RANGEVIEW DRIVE) 862' N  
ABOVEGROUND UTILITY: 287' N  
RAILROAD: ±2900' N  
PROPERTY LINE: 250' N





Lat40°, Inc. 1635 Foxtrail Drive, Suite 325 Loveland, CO 970-776-3321

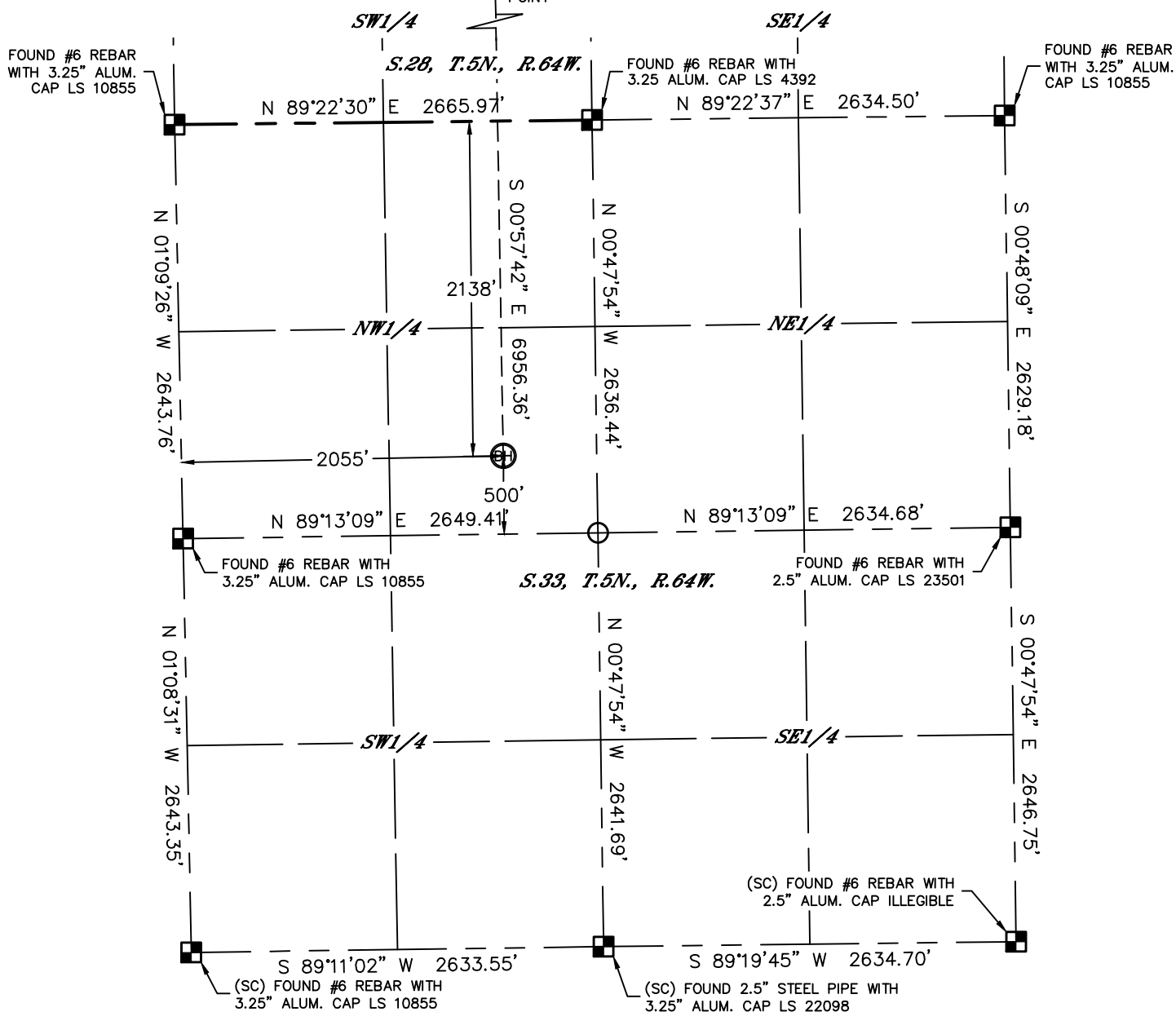
# WELL LOCATION CERTIFICATE

SECTION: 28  
TOWNSHIP: 5N  
RANGE: 64W

THIS MAP DOES NOT REPRESENT A BOUNDARY SURVEY

CHURCHILL 28M-343 S 70°40'30" E 703.30'

ENTRY POINT



0 1000  
1"=1000'

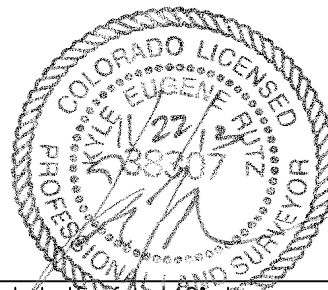
## LEGEND

- = ALIQUOT MONUMENT AS DESCRIBED
- = CALCULATED POSITION

## SHEET 2 OF 2

Kyle E. Rutz—On behalf of Lat40°, Inc.  
Colorado Licensed Professional  
Land Surveyor No. 38307

DATE: 11/21/2013  
PROJECT#: 2013151

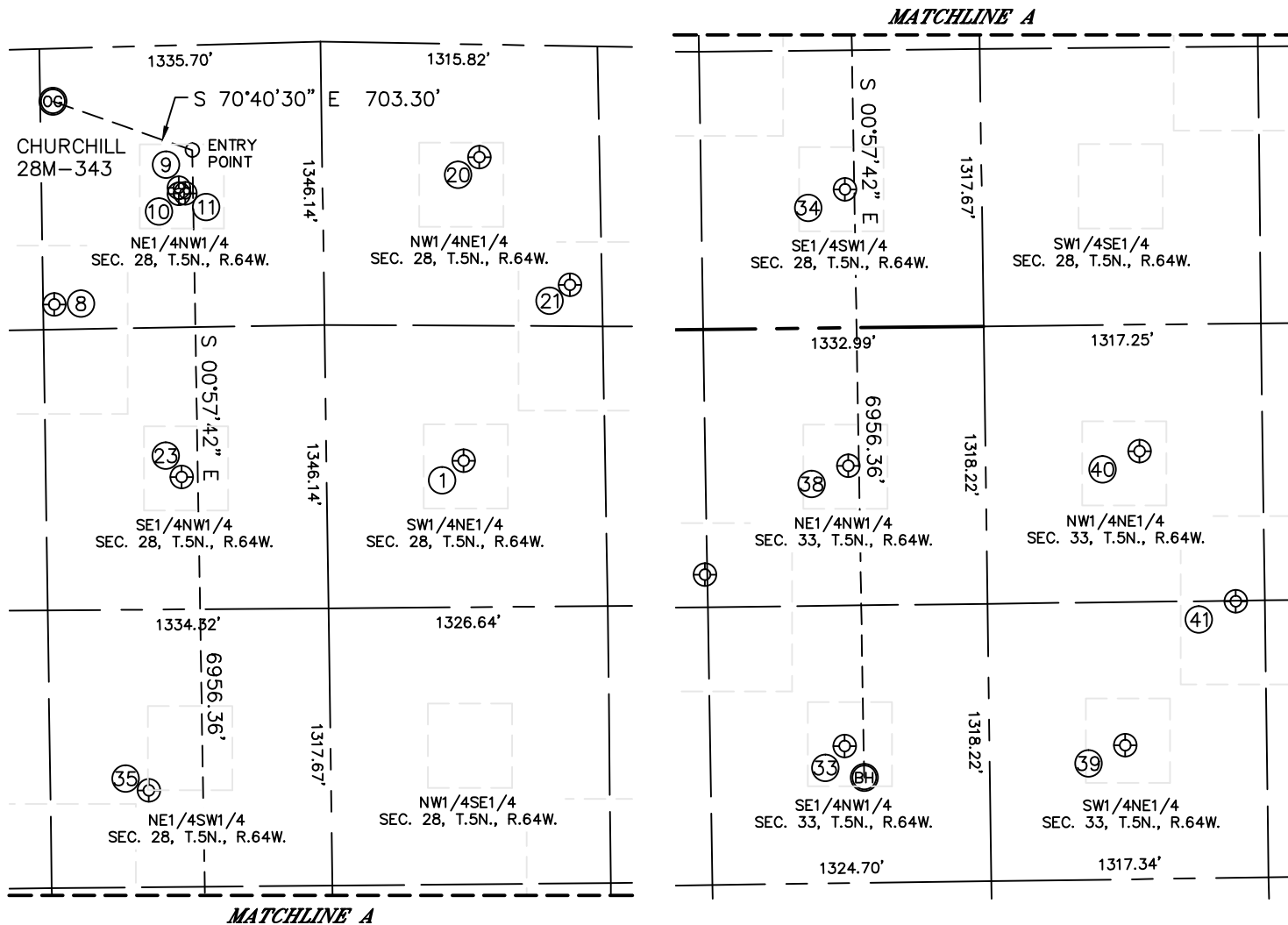


Lat40°, Inc. 1635 Foxtrail Drive, Suite 325 Loveland, CO 970-776-3321

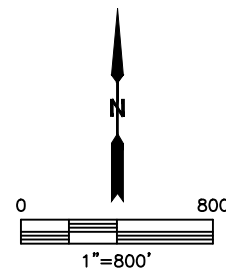
## SITE SKETCH

CHURCHILL 28M-343

SECTION: 28  
TOWNSHIP: 5N  
RANGE: 64W



WELL NO.	WELL NAME	SHL FOOTAGE				SHL LAT°	SHL LONG°	PDOP	ELEV (FT.)	1/4/1/4
1	HALL 28-3	1979	FNL	1996	FEL	40.37217	-104.55235	2.0	4625	SWNE
8	CHURCHILL 5	1215	FNL	1387	FWL	40.37426	-104.55929	1.9	4639	NENW
9	CHURCHILL 2-6B	676	FNL	1988	FWL	40.37577	-104.55715	1.9	4629	NENW
10	CHURCHILL 28-2	706	FNL	1987	FWL	40.37569	-104.55715	2.3	4629	NENW
11	CHURCHILL 2-7I	704	FNL	2018	FWL	40.37569	-104.55704	1.9	4629	NENW
20	HALL 28-4	536	FNL	1888	FEL	40.37612	-104.55202	1.8	4620	NWNE
21	HALL 28-5	1136	FNL	1471	FEL	40.37444	-104.55050	1.7	4620	NWNE
23	CHURCHILL 28-1	2051	FNL	1979	FWL	40.37199	-104.55715	2.8	4650	SENW
33	BAILEY 33-1	650	FSL	1965	FWL	40.35757	-104.55708	2.1	4687	SENW
34	WELSH 1	657	FSL	2017	FWL	40.36483	-104.55698	1.9	4648	SESW
35	WELCH B 28-11	1779	FSL	1801	FWL	40.36791	-104.55777	1.8	4641	NESW
38	WONENBERG B33-3	1982	FSL	2010	FWL	40.36123	-104.55697	1.5	4664	NENW
39	HENDRICKS 33-4	1998	FNL	1990	FEL	40.35755	-104.55230	1.5	4666	SWNE
40	HENDRICKS 33-2	601	FNL	1903	FEL	40.36138	-104.55201	3.4	4644	NWNE
41	HENDRICKS 5	1319	FNL	1456	FEL	40.35941	-104.55039	1.9	4646	SWNE



DATE: 11/21/2013  
PROJECT#: 2013151