

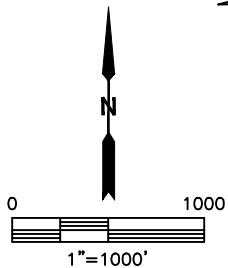
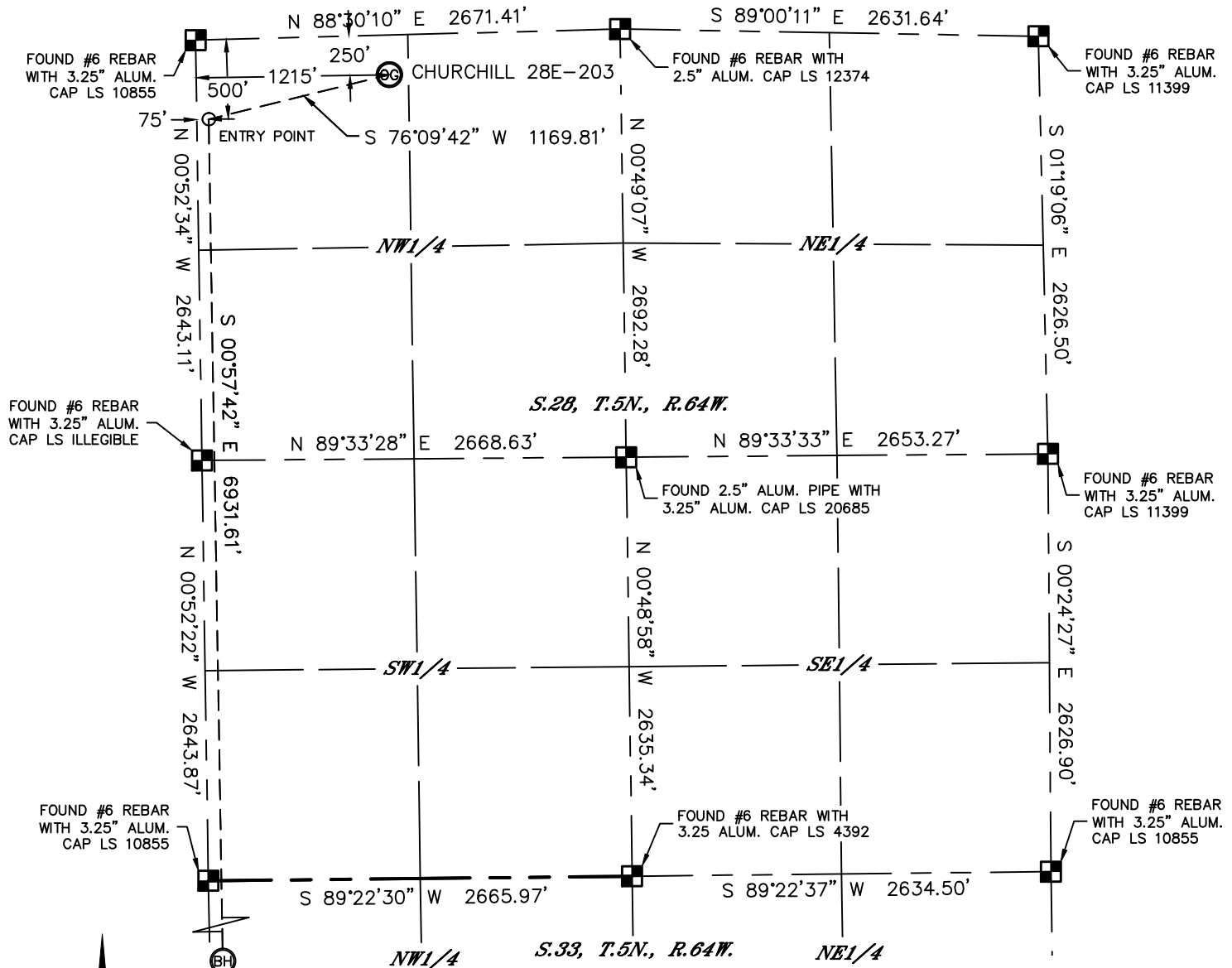


Lat40°, Inc. 1635 Foxtrail Drive, Suite 325 Loveland, CO 970-776-3321

WELL LOCATION CERTIFICATE

THIS MAP DOES NOT REPRESENT A BOUNDARY SURVEY

SECTION: 28
TOWNSHIP: 5N
RANGE: 64W



In accordance with a request from Jake Bragg with PDC ENERGY Lat40°, Inc. has determined the surface location of the CHURCHILL 28E-203 to be 250' from the NORTH line and 1215' from the WEST line as measured at right angles from the section lines of Section 28, Township 5 North, Range 64 West and the bottom hole to be 2143' from the NORTH line and 75' from the WEST line as measured at right angles from the section lines of Section 33, Township 5 North, Range 64 West of the Sixth Principal Meridian, County of Weld, State of Colorado.

I hereby state that this Well Location Certificate was prepared by me, or under my direct supervision, that the fieldwork was completed on 11/7/2013, for and on behalf of PDC ENERGY. That this is not a Land Survey Plat or an Improvement Survey Plat, and that it is not to be relied upon for establishment of fence, building, or other future improvement lines.

SURFACE LOCATION
LAT: 40.37690°N
LONG: 104.55993°W
PDOP: 2.7
ELEV: 4635'
1/4,1/4: NW1/4NW1/4

BOTTOM HOLE
LAT: 40.35715°N
LONG: 104.56386°W

ENTRY POINT
LAT: 40.37617°N
LONG: 104.56401°W

NOTE:

- 1) Bearings shown are Grid Bearings of the Colorado State Plane Coordinate System, North Zone, North American Datum 1983/2007. The lineal dimensions as contained herein are based upon the "U.S. Survey Foot."
- 2) Ground elevations are based on an observed GPS elevation (NAVD 1988 DATUM).
- 3) IMPROVEMENTS: See LOCATION DRAWING for all visible improvements within 500' of disturbed area.
- 4) SURFACE USE: RANGELAND
- 5) INSTRUMENT OPERATOR: BRIAN ROTTINGHAUS
- 6) NEAREST CULTURAL ITEMS:
BUILDING: ±641' NW
BUILDING UNIT: ±718' NW
HIGH OCCUPANCY BUILDING UNIT: ±2250' NE
DESIGNATED OUTSIDE ACTIVITY AREA: 5280'+
PUBLIC ROAD: (RANGEVIEW DRIVE) 860' N
ABOVEGROUND UTILITY: 285' N
RAILROAD: ±2900' N
PROPERTY LINE: 250' N

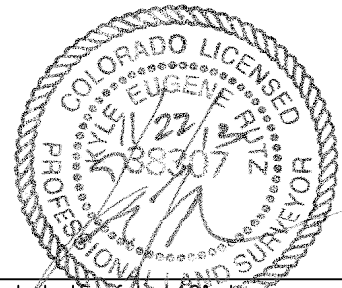
LEGEND

- = ALIQUOT MONUMENT AS DESCRIBED
- = CALCULATED POSITION

SHEET 1 OF 2

Kyle E. Rutz—On behalf of Lat40°, Inc.
Colorado Licensed Professional
Land Surveyor No. 38307

DATE: 11/21/2013
PROJECT#: 2013151



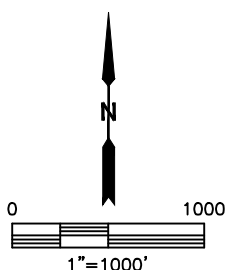
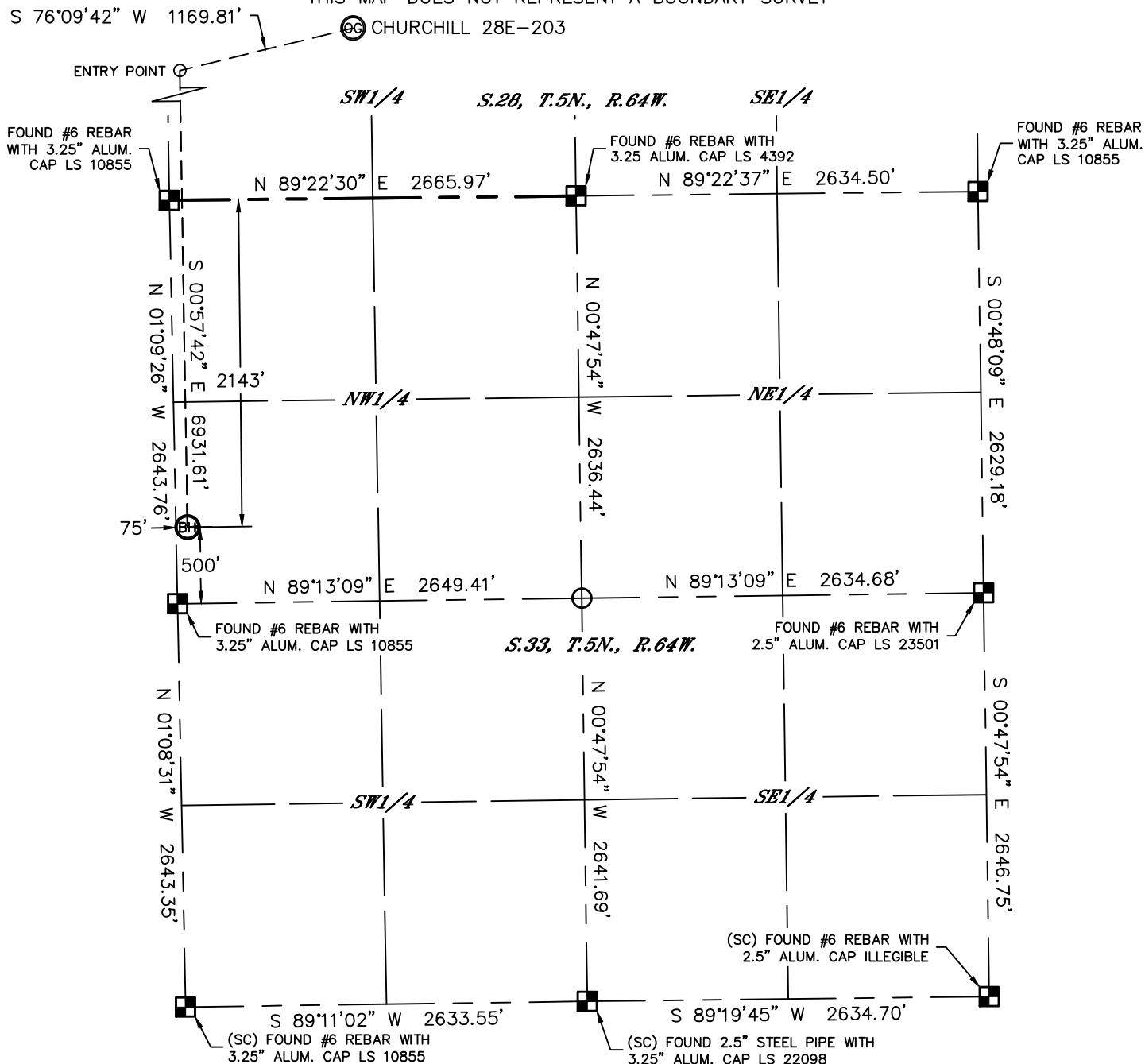


Lat40°, Inc. 1635 Foxtrail Drive, Suite 325 Loveland, CO 970-776-3321

WELL LOCATION CERTIFICATE

SECTION: 28
TOWNSHIP: 5N
RANGE: 64W

THIS MAP DOES NOT REPRESENT A BOUNDARY SURVEY



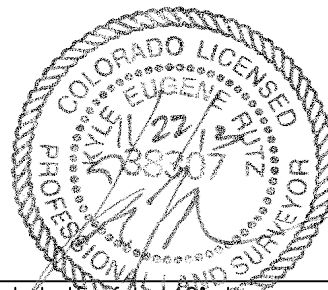
LEGEND

- = ALIQUOT MONUMENT AS DESCRIBED
- = CALCULATED POSITION

SHEET 2 OF 2

Kyle E. Rutz—On behalf of Lat40°, Inc.
Colorado Licensed Professional
Land Surveyor No. 38307

DATE: 11/21/2013
PROJECT#: 2013151



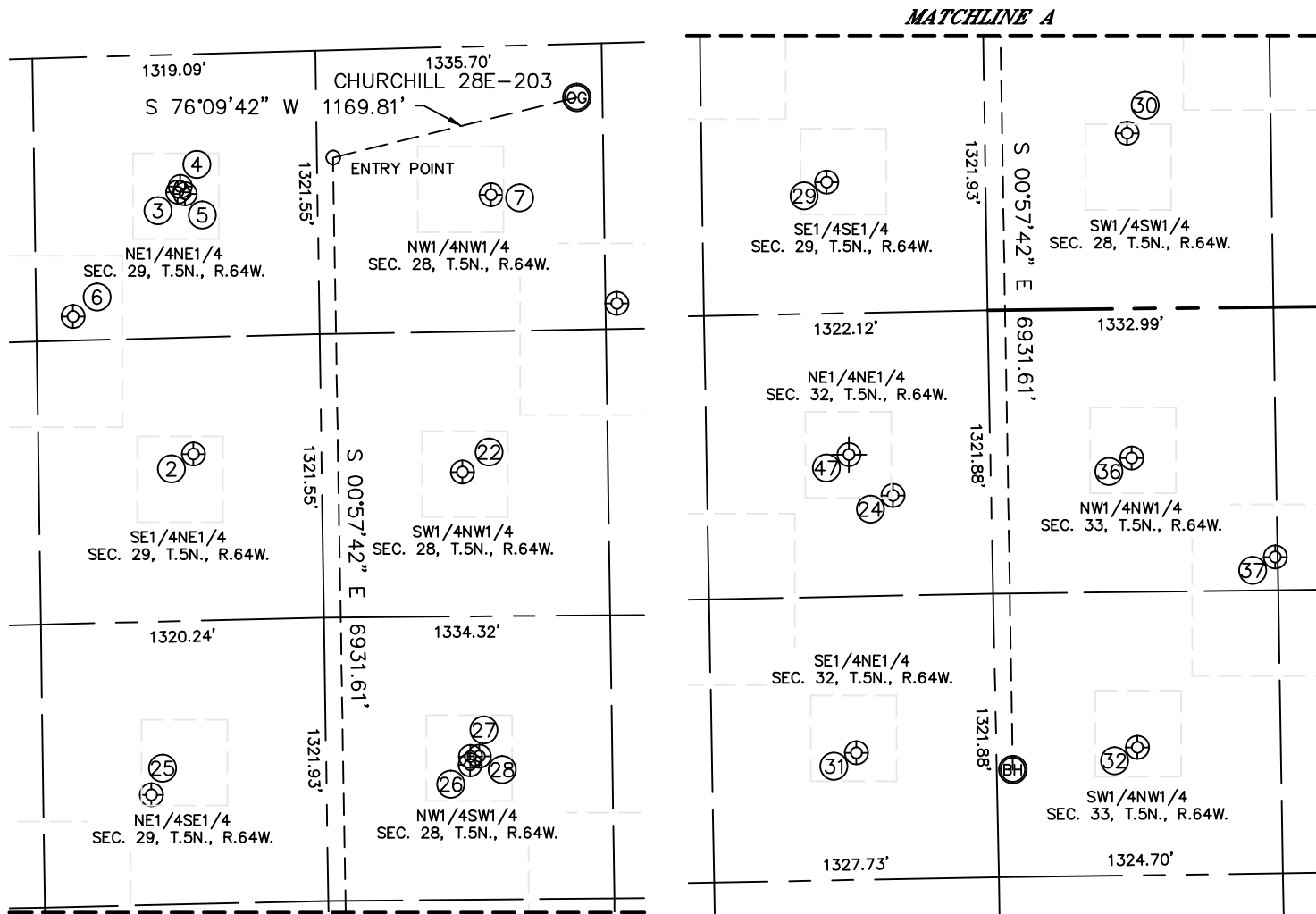


Lat40°, Inc. 1635 Foxtrail Drive, Suite 325 Loveland, CO 970-776-3321

SITE SKETCH

CHURCHILL 28E-203

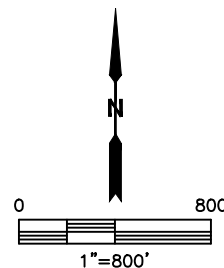
SECTION: 28
TOWNSHIP: 5N
RANGE: 64W



MATCHLINE A

WELL NO.	WELL NAME	SHL FOOTAGE				SHL LAT°	SHL LONG°	PDOP	ELEV. (FT.)	1/4/1/4
2	ROSKOP 29-1	1865	FNL	597	FEL	40.37239	-104.56640	2.1	4669	SENE
3	OTTENHOFF 41-29	642	FNL	652	FEL	40.37574	-104.56662	3.9	4659	NENE
4	OTTENHOFF 41-6B	616	FNL	639	FEL	40.37582	-104.56657	2.0	4658	NENE
5	OTTENHOFF 41-7B	651	FNL	618	FEL	40.37572	-104.56650	2.0	4658	NENE
6	CARLSON 5	1208	FNL	1148	FEL	40.37417	-104.56839	2.1	4671	NENE
7	CHURCHILL 28A-1	693	FNL	809	FWL	40.37567	-104.56138	2.0	4651	NWNW
22	CHURCHILL 2 28A	1982	FNL	656	FWL	40.37213	-104.56190	3.0	4657	SENW
24	CROSS 32-11A	855	FNL	458	FEL	40.36067	-104.56582	2.7	4711	NENE
25	BLAKE B 29-9	1834	FSL	817	FEL	40.36804	-104.56717	2.5	4681	NESE
26	ADAMSON 5	1949	FSL	671	FWL	40.36838	-104.56183	2.3	4674	NWSW
27	ADAMSON 28-1	1988	FSL	673	FWL	40.36848	-104.56182	2.3	4673	NWSW
28	ADAMSON 1-6I	1989	FSL	713	FWL	40.36849	-104.56168	2.3	4673	NWSW
29	BLAKE B29-16	612	FSL	741	FEL	40.36469	-104.56687	3.0	4704	SESE
30	ADAMSON 28-2	818	FSL	663	FWL	40.36527	-104.56184	3.1	4674	SWSW
31	DIC AMATO 42-32	2051	FNL	653	FEL	40.35738	-104.56647	1.9	4713	SENE
32	BAILEY 33-2	596	FSL	657	FWL	40.35742	-104.56177	1.8	4712	SWNW
36	WONENBERG 1	1945	FSL	658	FWL	40.36112	-104.56182	1.8	4699	NWNW
37	HOFFMAN B 33-19	1475	FSL	1318	FWL	40.35983	-104.55943	1.4	4691	NWNW
47	CROSS 32-11 (D&A)	660	FNL	660	FEL	40.36130	-104.56665	NA	4707	NENE

NOTE: THE ABANDONED
WELL DATA SHOWN IN RED
ABOVE WAS OBTAINED FROM
COGCC SCOUT CARDS.



DATE: 11/21/2013
PROJECT#: 2013151