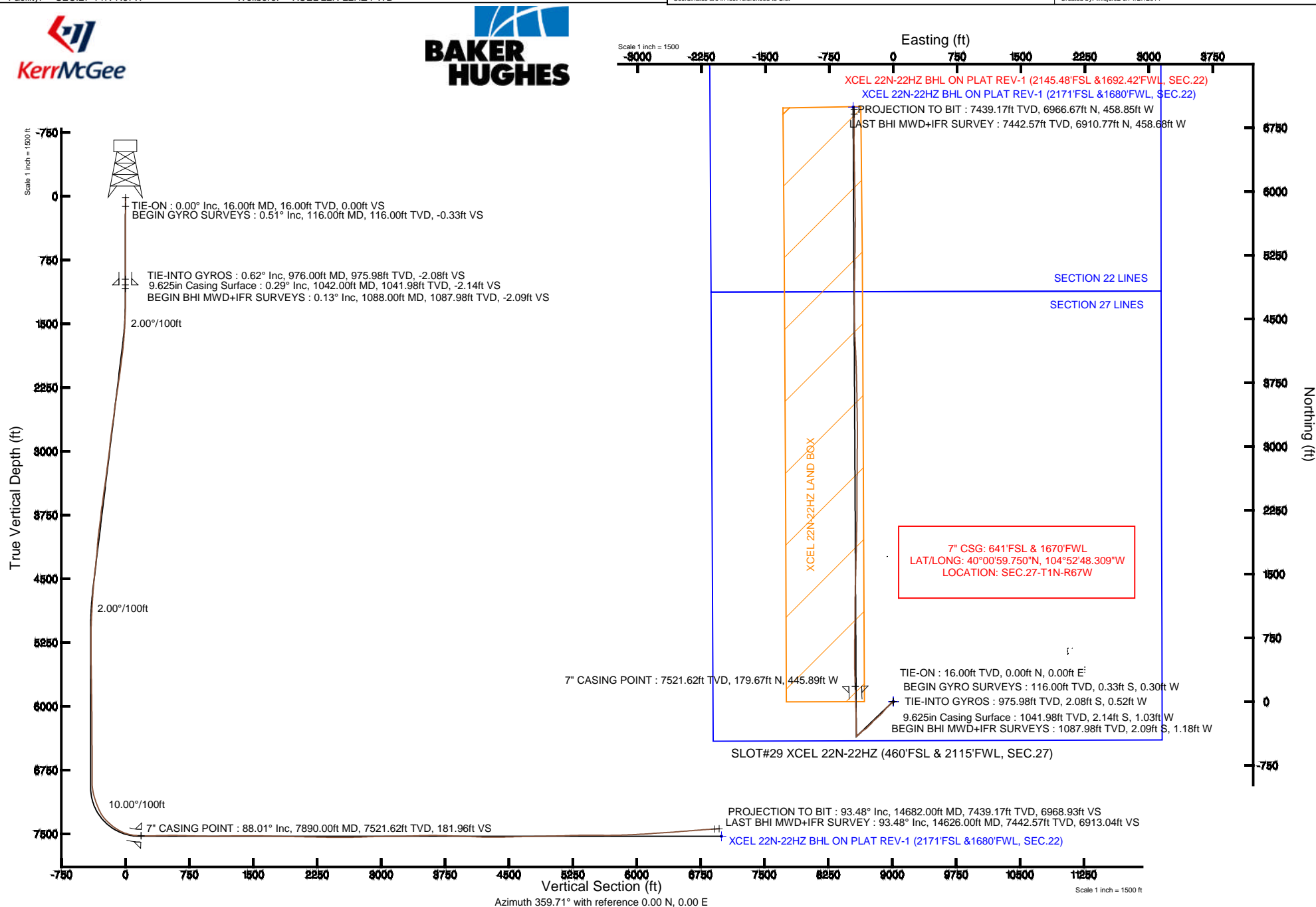


Location:	COLORADO	Slot:	SLOT#29 XCEL 22N-22HZ (460'FSL & 2115'FWL, SEC.27)
Field:	WELD COUNTY (KERR MCGEE)	Well:	XCEL 22N-22HZ
Facility:	SEC.27-T1N-R67W	Wellbore:	XCEL 22N-22HZ PWB

True vertical depths are referenced to XTREME 24 (16' RKB) (RKB)	Grid System: NAD83 / Lambert Colorado SP, Northern Zone (501), US feet
Measured depths are referenced to XTREME 24 (16' RKB) (RKB)	North Reference: True north
XTREME 24 (16' RKB) (RKB) to Mean Sea Level: 5053 feet	Scale: True distance
Mean Sea Level to Mud line (At Slot: SLOT#29 XCEL 22N-22HZ (460FSL & 2115FWL, SEC.27)): 0 feet	Depths are in feet
Coordinates are in feet referenced to Slot	Created by: wilsie02 on 1/27/2014





# Actual Wellpath Report

XCEL 22N-22HZ AWP

Page 1 of 6



## REFERENCE WELLPATH IDENTIFICATION

Operator	KERR-MCGEE OIL & GAS ONSHORE LP	Slot	SLOT#29 XCEL 22N-22HZ (460'FSL & 2115'FWL, SEC.27)
Area	COLORADO	Well	XCEL 22N-22HZ
Field	WELD COUNTY (KERR MCGEE)	Wellbore	XCEL 22N-22HZ AWB
Facility	SEC.27-T1N-R67W		

## REPORT SETUP INFORMATION

Projection System	NAD83 / Lambert Colorado SP, Northern Zone (501), US feet	Software System	WellArchitect® 4.0.0
North Reference	True	User	Wilsjef02
Scale	0.999965	Report Generated	1/27/2014 at 17:35:14
Convergence at slot	n/a	Database/Source file	WellArchitectDB/XCEL_22N-22HZ_AWB.xml

## WELLPATH LOCATION

	Local coordinates		Grid coordinates		Geographic coordinates	
	North[ft]	East[ft]	Easting[US ft]	Northing[US ft]	Latitude	Longitude
Slot Location	-3652.38	951.24	3174074.63	1249323.09	40°00'57.974"N	104°52'42.578"W
Facility Reference Pt			3173097.99	1252968.61	40°01'34.068"N	104°52'54.804"W
Field Reference Pt			3197771.84	1268891.29	40°04'09.600"N	104°47'36.000"W

## WELLPATH DATUM

Calculation method	Minimum curvature	XTREME 24 (16' RKB) (RKB) to Facility Vertical Datum	5053.00ft
Horizontal Reference Pt	Slot	XTREME 24 (16' RKB) (RKB) to Mean Sea Level	5053.00ft
Vertical Reference Pt	XTREME 24 (16' RKB) (RKB)	XTREME 24 (16' RKB) (RKB) to Mud Line at Slot (SLOT#29 XCEL 22N-22HZ (460'FSL & 2115'FWL, SEC.27))	5053.00ft
MD Reference Pt	XTREME 24 (16' RKB) (RKB)	Section Origin	N 0.00, E 0.00 ft
Field Vertical Reference	Mean Sea Level	Section Azimuth	356.23°



# Actual Wellpath Report

XCEL 22N-22HZ AWP

Page 2 of 6



## REFERENCE WELLPATH IDENTIFICATION

Operator	KERR-MCGEE OIL & GAS ONSHORE LP	Slot	SLOT#29 XCEL 22N-22HZ (460'FSL & 2115'FWL, SEC.27)
Area	COLORADO	Well	XCEL 22N-22HZ
Field	WELD COUNTY (KERR MCGEE)	Wellbore	XCEL 22N-22HZ AWB
Facility	SEC.27-T1N-R67W		

## WELLPATH DATA (129 stations) † = interpolated/extrapolated station

MD [ft]	Inclination [°]	Azimuth [°]	TVD [ft]	Vert Sect [ft]	North [ft]	East [ft]	Latitude	Longitude	DLS [°/100ft]	Comments
0.00†	0.000	222.440	0.00	0.00	0.00	0.00	40°00'57.974"N	104°52'42.578"W	0.00	
16.00	0.000	222.440	16.00	0.00	0.00	0.00	40°00'57.974"N	104°52'42.578"W	0.00	TIE-ON
116.00	0.510	222.440	116.00	-0.31	-0.33	-0.30	40°00'57.971"N	104°52'42.582"W	0.51	BEGIN GYRO SURVEYS
216.00	0.430	195.110	216.00	-0.97	-1.02	-0.70	40°00'57.964"N	104°52'42.587"W	0.24	
316.00	0.440	136.550	315.99	-1.62	-1.66	-0.53	40°00'57.958"N	104°52'42.585"W	0.43	
416.00	0.460	140.350	415.99	-2.24	-2.25	-0.01	40°00'57.952"N	104°52'42.578"W	0.04	
516.00	0.370	109.860	515.99	-2.70	-2.67	0.55	40°00'57.948"N	104°52'42.571"W	0.23	
616.00	0.190	70.380	615.99	-2.78	-2.72	1.01	40°00'57.947"N	104°52'42.565"W	0.25	
716.00	0.190	336.270	715.99	-2.58	-2.51	1.10	40°00'57.949"N	104°52'42.564"W	0.28	
816.00	0.360	296.730	815.98	-2.26	-2.22	0.75	40°00'57.952"N	104°52'42.568"W	0.25	
916.00	0.480	275.500	915.98	-2.04	-2.04	0.05	40°00'57.954"N	104°52'42.577"W	0.19	
976.00	0.620	258.670	975.98	-2.04	-2.08	-0.52	40°00'57.953"N	104°52'42.585"W	0.35	TIE-INTO GYROS
1088.00	0.130	326.350	1087.98	-2.01	-2.09	-1.18	40°00'57.953"N	104°52'42.593"W	0.52	BEGIN BHI MWD+IFR SURVEYS
1182.00	0.210	335.910	1181.98	-1.76	-1.85	-1.31	40°00'57.956"N	104°52'42.595"W	0.09	
1276.00	2.000	258.160	1275.96	-1.82	-2.03	-2.99	40°00'57.954"N	104°52'42.616"W	2.09	
1371.00	2.910	233.690	1370.87	-3.35	-3.79	-6.55	40°00'57.937"N	104°52'42.662"W	1.44	
1465.00	3.280	235.970	1464.73	-5.99	-6.71	-10.70	40°00'57.908"N	104°52'42.716"W	0.41	
1559.00	4.300	216.290	1558.53	-10.05	-11.06	-15.02	40°00'57.865"N	104°52'42.771"W	1.74	
1653.00	6.280	225.490	1652.13	-16.10	-17.50	-20.77	40°00'57.801"N	104°52'42.845"W	2.28	
1747.00	8.380	228.570	1745.35	-23.64	-25.64	-29.57	40°00'57.721"N	104°52'42.958"W	2.27	
1841.00	10.060	230.980	1838.14	-32.56	-35.34	-41.09	40°00'57.625"N	104°52'43.106"W	1.83	
1936.00	10.820	224.660	1931.57	-43.27	-46.91	-53.80	40°00'57.510"N	104°52'43.270"W	1.45	
2028.00	10.130	223.400	2022.03	-54.50	-58.93	-65.43	40°00'57.392"N	104°52'43.419"W	0.79	
2120.00	10.500	220.870	2112.55	-65.97	-71.15	-76.48	40°00'57.271"N	104°52'43.561"W	0.64	
2212.00	11.530	221.640	2202.85	-78.39	-84.36	-88.07	40°00'57.140"N	104°52'43.710"W	1.13	
2304.00	10.890	220.090	2293.10	-91.11	-97.88	-99.78	40°00'57.007"N	104°52'43.860"W	0.77	
2396.00	10.200	218.270	2383.54	-103.43	-110.92	-110.42	40°00'56.878"N	104°52'43.997"W	0.83	
2488.00	10.200	221.700	2474.09	-115.19	-123.40	-120.88	40°00'56.755"N	104°52'44.132"W	0.66	
2580.00	10.700	222.210	2564.56	-126.84	-135.81	-132.04	40°00'56.632"N	104°52'44.275"W	0.55	
2672.00	10.950	224.000	2654.92	-138.64	-148.42	-143.85	40°00'56.507"N	104°52'44.427"W	0.46	
2764.00	10.360	227.660	2745.34	-149.68	-160.28	-156.03	40°00'56.390"N	104°52'44.583"W	0.98	
2856.00	10.620	225.290	2835.80	-160.39	-171.81	-168.17	40°00'56.276"N	104°52'44.739"W	0.55	
2948.00	10.480	230.530	2926.25	-170.83	-183.10	-180.66	40°00'56.165"N	104°52'44.900"W	1.05	
3040.00	10.590	227.780	3016.70	-180.97	-194.09	-193.38	40°00'56.056"N	104°52'45.063"W	0.56	
3132.00	11.050	230.340	3107.06	-191.39	-205.40	-206.42	40°00'55.944"N	104°52'45.231"W	0.72	
3224.00	11.400	227.580	3197.30	-202.24	-217.16	-219.92	40°00'55.828"N	104°52'45.405"W	0.70	
3315.00	10.380	225.720	3286.66	-213.18	-228.95	-232.43	40°00'55.711"N	104°52'45.565"W	1.19	
3407.00	9.350	218.300	3377.31	-224.12	-240.61	-243.00	40°00'55.596"N	104°52'45.701"W	1.78	
3499.00	11.670	224.800	3467.76	-235.82	-253.08	-254.19	40°00'55.473"N	104°52'45.845"W	2.83	
3591.00	10.440	224.590	3558.05	-247.52	-265.61	-266.60	40°00'55.349"N	104°52'46.004"W	1.34	
3683.00	11.340	226.330	3648.39	-258.86	-277.80	-278.99	40°00'55.229"N	104°52'46.164"W	1.04	
3776.00	9.280	224.490	3739.89	-269.72	-289.46	-290.86	40°00'55.113"N	104°52'46.316"W	2.24	
3870.00	9.850	223.240	3832.58	-280.25	-300.72	-301.68	40°00'55.002"N	104°52'46.455"W	0.65	
3963.00	10.510	225.960	3924.12	-291.15	-312.42	-313.23	40°00'54.887"N	104°52'46.604"W	0.88	
4057.00	10.460	235.740	4016.55	-301.03	-323.18	-326.45	40°00'54.780"N	104°52'46.774"W	1.89	



# Actual Wellpath Report

XCEL 22N-22HZ AWP

Page 3 of 6



## REFERENCE WELLPATH IDENTIFICATION

Operator	KERR-MCGEE OIL & GAS ONSHORE LP	Slot	SLOT#29 XCEL 22N-22HZ (460'FSL & 2115'FWL, SEC.27)
Area	COLORADO	Well	XCEL 22N-22HZ
Field	WELD COUNTY (KERR MCGEE)	Wellbore	XCEL 22N-22HZ AWB
Facility	SEC.27-T1N-R67W		

## WELLPATH DATA (129 stations) † = interpolated/extrapolated station

MD [ft]	Inclination [°]	Azimuth [°]	TVD [ft]	Vert Sect [ft]	North [ft]	East [ft]	Latitude	Longitude	DLS [°/100ft]	Comments
4151.00	7.870	243.010	4109.35	-307.90	-330.91	-339.23	40°00'54.704"N	104°52'46.938"W	3.01	
4245.00	8.740	234.640	4202.37	-314.17	-337.96	-350.79	40°00'54.634"N	104°52'47.087"W	1.58	
4339.00	9.990	227.580	4295.11	-323.01	-347.59	-362.64	40°00'54.539"N	104°52'47.239"W	1.80	
4432.00	8.710	226.140	4386.88	-332.58	-357.91	-373.67	40°00'54.437"N	104°52'47.381"W	1.40	
4526.00	8.320	225.090	4479.84	-341.64	-367.65	-383.62	40°00'54.341"N	104°52'47.508"W	0.45	
4620.00	7.490	228.750	4572.95	-349.84	-376.49	-393.04	40°00'54.253"N	104°52'47.630"W	1.03	
4705.00	6.660	227.300	4657.30	-356.31	-383.48	-400.83	40°00'54.184"N	104°52'47.730"W	1.00	
4790.00	5.560	231.050	4741.82	-361.78	-389.42	-407.66	40°00'54.126"N	104°52'47.817"W	1.38	
4875.00	5.120	232.360	4826.45	-366.27	-394.32	-413.86	40°00'54.077"N	104°52'47.897"W	0.54	
4960.00	5.080	236.960	4911.11	-370.22	-398.69	-420.02	40°00'54.034"N	104°52'47.976"W	0.48	
5045.00	4.220	228.320	4995.83	-373.98	-402.82	-425.51	40°00'53.993"N	104°52'48.047"W	1.30	
5130.00	2.410	224.500	5080.69	-377.10	-406.17	-429.10	40°00'53.960"N	104°52'48.093"W	2.14	
5215.00	0.900	92.430	5165.66	-378.36	-407.48	-429.68	40°00'53.947"N	104°52'48.100"W	3.63	
5642.00	1.010	15.310	5592.62	-375.16	-403.99	-425.34	40°00'53.982"N	104°52'48.045"W	0.28	
6068.00	0.850	319.570	6018.57	-369.08	-397.96	-426.40	40°00'54.041"N	104°52'48.058"W	0.21	
6494.00	0.310	291.630	6444.55	-366.05	-395.13	-429.52	40°00'54.069"N	104°52'48.098"W	0.14	
6835.00	0.180	299.570	6785.54	-365.36	-394.53	-430.84	40°00'54.075"N	104°52'48.115"W	0.04	
6920.00	0.340	329.680	6870.54	-365.06	-394.25	-431.09	40°00'54.078"N	104°52'48.119"W	0.24	
6962.00	1.750	349.380	6912.54	-364.31	-393.51	-431.27	40°00'54.085"N	104°52'48.121"W	3.42	
7005.00	5.550	1.580	6955.44	-361.59	-390.78	-431.33	40°00'54.112"N	104°52'48.122"W	8.97	
7048.00	10.060	357.510	6998.03	-355.76	-384.95	-431.44	40°00'54.170"N	104°52'48.123"W	10.56	
7090.00	14.000	355.650	7039.10	-347.01	-376.22	-431.98	40°00'54.256"N	104°52'48.130"W	9.43	
7133.00	18.170	355.760	7080.41	-335.10	-364.34	-432.87	40°00'54.373"N	104°52'48.141"W	9.70	
7176.00	18.440	353.830	7121.23	-321.60	-350.89	-434.10	40°00'54.506"N	104°52'48.157"W	1.54	
7218.00	21.050	355.290	7160.76	-307.42	-336.77	-435.43	40°00'54.646"N	104°52'48.174"W	6.32	
7261.00	24.480	358.870	7200.41	-290.79	-320.16	-436.24	40°00'54.810"N	104°52'48.185"W	8.60	
7303.00	27.050	359.680	7238.23	-272.57	-301.90	-436.47	40°00'54.990"N	104°52'48.188"W	6.18	
7346.00	32.270	1.240	7275.58	-251.36	-280.63	-436.27	40°00'55.201"N	104°52'48.185"W	12.27	
7389.00	38.480	0.560	7310.63	-226.56	-255.76	-435.89	40°00'55.447"N	104°52'48.180"W	14.47	
7431.00	44.790	1.380	7342.00	-198.76	-227.87	-435.41	40°00'55.722"N	104°52'48.174"W	15.08	
7474.00	47.620	359.870	7371.76	-167.82	-196.84	-435.08	40°00'56.029"N	104°52'48.170"W	7.05	
7517.00	50.010	358.240	7400.07	-135.50	-164.49	-435.62	40°00'56.348"N	104°52'48.177"W	6.25	
7559.00	54.550	358.100	7425.76	-102.31	-131.29	-436.68	40°00'56.677"N	104°52'48.191"W	10.81	
7602.00	59.580	357.440	7449.13	-66.24	-95.24	-438.09	40°00'57.033"N	104°52'48.209"W	11.77	
7644.00	62.860	357.380	7469.35	-29.44	-58.47	-439.76	40°00'57.396"N	104°52'48.230"W	7.81	
7687.00	69.330	358.470	7486.77	9.83	-19.21	-441.17	40°00'57.784"N	104°52'48.248"W	15.22	
7729.00	74.200	359.470	7499.91	49.66	20.67	-441.88	40°00'58.178"N	104°52'48.257"W	11.81	
7772.00	78.650	358.860	7510.00	91.39	62.45	-442.49	40°00'58.591"N	104°52'48.265"W	10.44	
7815.00	83.210	358.240	7516.77	133.81	104.89	-443.57	40°00'59.010"N	104°52'48.279"W	10.70	
7842.00	86.300	358.170	7519.24	160.68	131.76	-444.41	40°00'59.276"N	104°52'48.290"W	11.45	
7890.00†	88.014	358.286	7521.62	208.59	179.67	-445.89	40°00'59.750"N	104°52'48.309"W	3.58	7" CASING POINT
7954.00	90.300	358.440	7522.56	272.53	243.64	-447.72	40°01'00.382"N	104°52'48.332"W	3.58	
8046.00	90.710	358.100	7521.75	364.47	335.59	-450.50	40°01'01.290"N	104°52'48.368"W	0.58	
8138.00	91.260	358.670	7520.17	456.39	427.54	-453.09	40°01'02.199"N	104°52'48.402"W	0.86	
8229.00	90.800	0.370	7518.53	547.22	518.52	-453.85	40°01'03.098"N	104°52'48.411"W	1.94	



# Actual Wellpath Report

XCEL 22N-22HZ AWP

Page 4 of 6



## REFERENCE WELLPATH IDENTIFICATION

Operator	KERR-MCGEE OIL & GAS ONSHORE LP	Slot	SLOT#29 XCEL 22N-22HZ (460'FSL & 2115'FWL, SEC.27)
Area	COLORADO	Well	XCEL 22N-22HZ
Field	WELD COUNTY (KERR MCGEE)	Wellbore	XCEL 22N-22HZ AWB
Facility	SEC.27-T1N-R67W		

## WELLPATH DATA (129 stations)

MD [ft]	Inclination [°]	Azimuth [°]	TVD [ft]	Vert Sect [ft]	North [ft]	East [ft]	Latitude	Longitude	DLS [°/100ft]	Comments
8321.00	88.670	0.480	7518.96	638.97	610.51	-453.17	40°01'04.007"N	104°52'48.403"W	2.32	
8597.00	88.700	0.900	7525.29	914.06	886.42	-449.85	40°01'06.734"N	104°52'48.360"W	0.15	
8877.00	91.350	0.150	7525.17	1193.25	1166.38	-447.28	40°01'09.500"N	104°52'48.327"W	0.98	
9065.00	90.430	1.420	7522.25	1380.63	1354.33	-444.71	40°01'11.358"N	104°52'48.294"W	0.83	
9346.00	88.670	1.470	7524.46	1660.45	1635.22	-437.62	40°01'14.134"N	104°52'48.203"W	0.63	
9619.00	88.880	1.240	7530.30	1932.29	1908.08	-431.17	40°01'16.830"N	104°52'48.120"W	0.11	
9874.00	88.940	1.010	7535.15	2186.32	2162.99	-426.16	40°01'19.349"N	104°52'48.056"W	0.09	
10044.00	88.760	359.760	7538.56	2355.83	2332.95	-425.02	40°01'21.029"N	104°52'48.041"W	0.74	
10300.00	90.460	0.310	7540.30	2611.25	2588.93	-424.86	40°01'23.559"N	104°52'48.039"W	0.70	
10556.00	92.440	0.480	7533.82	2866.48	2844.83	-423.10	40°01'26.087"N	104°52'48.017"W	0.78	
10641.00	91.630	0.420	7530.80	2951.20	2929.77	-422.43	40°01'26.927"N	104°52'48.008"W	0.96	
10726.00	90.740	1.010	7529.05	3035.92	3014.74	-421.37	40°01'27.767"N	104°52'47.994"W	1.26	
10812.00	89.660	0.310	7528.75	3121.66	3100.74	-420.38	40°01'28.616"N	104°52'47.982"W	1.50	
10982.00	91.570	359.010	7526.92	3291.34	3270.71	-421.39	40°01'30.296"N	104°52'47.995"W	1.36	
11152.00	92.060	359.160	7521.54	3461.04	3440.61	-424.10	40°01'31.975"N	104°52'48.030"W	0.30	
11237.00	90.950	358.840	7519.31	3545.91	3525.56	-425.59	40°01'32.815"N	104°52'48.049"W	1.36	
11323.00	89.870	359.550	7518.69	3631.79	3611.55	-426.79	40°01'33.664"N	104°52'48.064"W	1.50	
11493.00	88.020	358.480	7521.82	3801.55	3781.49	-429.72	40°01'35.344"N	104°52'48.102"W	1.26	
11663.00	88.150	358.280	7527.50	3971.34	3951.32	-434.52	40°01'37.022"N	104°52'48.164"W	0.14	
11834.00	87.250	356.880	7534.36	4142.15	4122.03	-441.73	40°01'38.709"N	104°52'48.256"W	0.97	
12004.00	89.810	357.880	7538.72	4312.04	4291.78	-449.50	40°01'40.387"N	104°52'48.356"W	1.62	
12175.00	91.810	358.820	7536.31	4482.89	4462.68	-454.42	40°01'42.075"N	104°52'48.420"W	1.29	
12431.00	90.920	0.120	7530.21	4738.41	4718.59	-456.79	40°01'44.604"N	104°52'48.450"W	0.62	
12686.00	91.140	1.110	7525.62	4992.61	4973.53	-454.05	40°01'47.124"N	104°52'48.415"W	0.40	
12942.00	91.980	0.760	7518.66	5247.66	5229.39	-449.88	40°01'49.652"N	104°52'48.361"W	0.36	
13196.00	89.590	0.130	7515.18	5500.93	5483.34	-447.90	40°01'52.162"N	104°52'48.336"W	0.97	
13281.00	89.280	1.200	7516.01	5585.67	5568.33	-446.92	40°01'53.002"N	104°52'48.323"W	1.31	
13366.00	90.030	359.380	7516.53	5670.45	5653.33	-446.49	40°01'53.842"N	104°52'48.318"W	2.32	
13452.00	90.800	359.260	7515.90	5756.32	5739.32	-447.51	40°01'54.692"N	104°52'48.331"W	0.91	
13537.00	91.900	359.420	7513.90	5841.17	5824.29	-448.49	40°01'55.531"N	104°52'48.344"W	1.31	
13706.00	93.050	359.270	7506.60	6009.76	5993.11	-450.42	40°01'57.200"N	104°52'48.368"W	0.69	
13792.00	93.360	359.190	7501.79	6095.51	6078.97	-451.57	40°01'58.048"N	104°52'48.383"W	0.37	
13962.00	94.420	358.550	7490.26	6264.93	6248.54	-454.92	40°01'59.724"N	104°52'48.426"W	0.73	
14046.00	93.260	359.260	7484.64	6348.65	6332.34	-456.52	40°02'00.552"N	104°52'48.447"W	1.62	
14216.00	94.600	359.200	7472.98	6518.02	6501.92	-458.80	40°02'02.228"N	104°52'48.476"W	0.79	
14386.00	94.630	0.490	7459.31	6687.12	6671.36	-459.25	40°02'03.902"N	104°52'48.482"W	0.76	
14471.00	94.110	0.210	7452.83	6771.66	6756.12	-458.74	40°02'04.740"N	104°52'48.476"W	0.69	
14626.00	93.480	359.830	7442.57	6925.98	6910.77	-458.68	40°02'06.268"N	104°52'48.475"W	0.47	LAST BHI MWD+IFR SURVEY
14682.00	93.480	359.830	7439.17	6981.76	6966.67	-458.85	40°02'06.821"N	104°52'48.477"W	0.00	PROJECTION TO BIT



# Actual Wellpath Report

XCEL 22N-22HZ AWP

Page 5 of 6



## REFERENCE WELLPATH IDENTIFICATION

Operator	KERR-MCGEE OIL & GAS ONSHORE LP	Slot	SLOT#29 XCEL 22N-22HZ (460'FSL & 2115'FWL, SEC.27)
Area	COLORADO	Well	XCEL 22N-22HZ
Field	WELD COUNTY (KERR MCGEE)	Wellbore	XCEL 22N-22HZ AWB
Facility	SEC.27-T1N-R67W		

## HOLE & CASING SECTIONS - Ref Wellbore: XCEL 22N-22HZ AWB Ref Wellpath: XCEL 22N-22HZ AWP

String/Diameter	Start MD [ft]	End MD [ft]	Interval [ft]	Start TVD [ft]	End TVD [ft]	Start N/S [ft]	Start E/W [ft]	End N/S [ft]	End E/W [ft]
13.5in Open Hole	16.00	1042.00	1026.00	16.00	1041.98	0.00	0.00	-2.14	-1.03
9.625in Casing Surface	16.00	1042.00	1026.00	16.00	1041.98	0.00	0.00	-2.14	-1.03
8.875in Open Hole	1042.00	7900.00	6858.00	1041.98	7521.94	-2.14	-1.03	189.66	-446.19
7in Casing Intermediate	16.00	7890.00	7874.00	16.00	7521.62	0.00	0.00	179.67	-445.89
6.125in Open Hole	7890.00	14682.00	6792.00	7521.62	7439.17	179.67	-445.89	6966.67	-458.85

## TARGETS

Name	MD [ft]	TVD [ft]	North [ft]	East [ft]	Grid East [US ft]	Grid North [US ft]	Latitude	Longitude	Shape
SEC.22-T1N-R67W SECTION LINES		0.00	0.00	0.00	3174074.63	1249323.09	40°00'57.974"N	104°52'42.578"W	polygon
SEC.27-T1N-R67W SECTION LINES		0.00	0.00	0.00	3174074.63	1249323.09	40°00'57.974"N	104°52'42.578"W	polygon
XCEL 22N-22HZ BHL ON PLAT REV-1 (2171'FSL & 1680'FWL, SEC.22)		7528.00	6992.19	-471.30	3173554.35	1256311.55	40°02'07.073"N	104°52'48.637"W	point
XCEL 22N-22HZ LAND BOX		7600.00	0.00	0.00	3174074.63	1249323.09	40°00'57.974"N	104°52'42.578"W	polygon

## WELLPATH COMPOSITION - Ref Wellbore: XCEL 22N-22HZ AWB Ref Wellpath: XCEL 22N-22HZ AWP

Start MD [ft]	End MD [ft]	Positional Uncertainty Model	Log Name/Comment	Wellbore
16.00	976.00	Generic gyro - continuous (Standard)	VES GYRODATA SURVEYS <100-976>	XCEL 22N-22HZ AWB
976.00	7842.00	NaviTrak (MAGCORR,IFR)	BHI MWD+IFR SURVEYS 8 3/4" HOLE <1088-7842>	XCEL 22N-22HZ AWB
7842.00	14626.00	NaviTrak (MAGCORR,IFR)	BHI MWD+IFR SURVEYS 6 1/8" HOLE <7954-14626>	XCEL 22N-22HZ AWB
14626.00	14682.00	Blind Drilling (std)	Projection to bit	XCEL 22N-22HZ AWB





# Actual Wellpath Report

XCEL 22N-22HZ AWP

Page 6 of 6



## REFERENCE WELLPATH IDENTIFICATION

Operator	KERR-MCGEE OIL & GAS ONSHORE LP	Slot	SLOT#29 XCEL 22N-22HZ (460'FSL & 2115'FWL, SEC.27)
Area	COLORADO	Well	XCEL 22N-22HZ
Field	WELD COUNTY (KERR MCGEE)	Wellbore	XCEL 22N-22HZ AWB
Facility	SEC.27-T1N-R67W		

## WELLPATH COMMENTS

MD [ft]	Inclination [°]	Azimuth [°]	TVD [ft]	Comment
16.00	0.000	222.440	16.00	TIE-ON
116.00	0.510	222.440	116.00	BEGIN GYRO SURVEYS
976.00	0.620	258.670	975.98	TIE-INTO GYROS
1088.00	0.130	326.350	1087.98	BEGIN BHI MWD+IFR SURVEYS
7890.00	88.014	358.286	7521.62	7" CASING POINT
14626.00	93.480	359.830	7442.57	LAST BHI MWD+IFR SURVEY
14682.00	93.480	359.830	7439.17	PROJECTION TO BIT