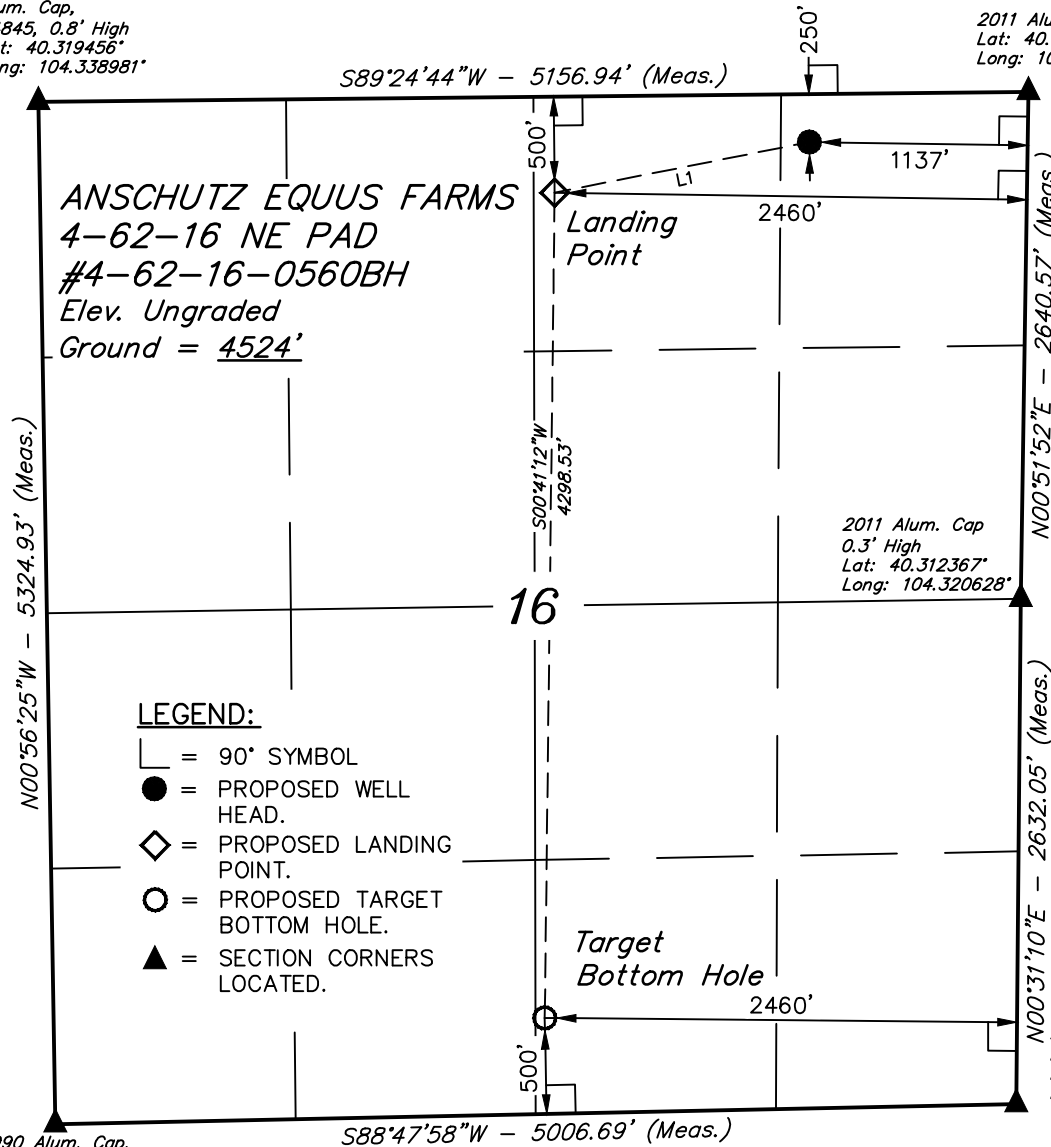


T4N, R62W, 6th P.M.

Alum. Cap,  
#4845, 0.8' High  
Lat: 40.319456°  
Long: 104.338981°

2011 Alum. Cap  
Lat: 40.319611°  
Long: 104.320492°



**LEGEND:**

- └─┘ = 90° SYMBOL
- = PROPOSED WELL HEAD.
- ◊ = PROPOSED LANDING POINT.
- = PROPOSED TARGET BOTTOM HOLE.
- ▲ = SECTION CORNERS LOCATED.

1990 Alum. Cap,  
#7242, 0.6' High  
Lat: 40.304844°  
Long: 104.338650°

2011 Alum. Cap  
Flush w/Ground  
Lat: 40.305144°  
Long: 104.320708°

PDOP = 2.3

NAD 83 (TARGET BOTTOM HOLE)	NAD 83 (LANDING POINT)	NAD 83 (SURFACE LOCATION)
LATITUDE = 40°18'22.93" (40.306369)	LATITUDE = 40°19'05.40" (40.318167)	LATITUDE = 40°19'08.01" (40.318892)
LONGITUDE = 104°19'46.25" (104.329514)	LONGITUDE = 104°19'45.62" (104.329339)	LONGITUDE = 104°19'28.50" (104.324583)
NAD 27 (TARGET BOTTOM HOLE)	NAD 27 (LANDING POINT)	NAD 27 (SURFACE LOCATION)
LATITUDE = 40°18'23.00" (40.306389)	LATITUDE = 40°19'05.46" (40.318183)	LATITUDE = 40°19'08.08" (40.318911)
LONGITUDE = 104°19'44.42" (104.329006)	LONGITUDE = 104°19'43.80" (104.328833)	LONGITUDE = 104°19'26.68" (104.324078)
STATE PLANE NAD 83	STATE PLANE NAD 83	STATE PLANE NAD 83
N: 1356606.01 E: 3326433.53	N: 1360903.41 E: 3326425.03	N: 1361185.47 E: 3327747.50
STATE PLANE NAD 27	STATE PLANE NAD 27	STATE PLANE NAD 27
N: 356608.45 E: 2326583.77	N: 360905.74 E: 2326575.23	N: 361187.81 E: 2327897.70

**BILL BARRETT CORPORATION**

Well location, ANSCHUTZ EQUUS FARMS 4-62-16 NE PAD #4-62-16-0560BH, located as shown in the NE 1/4 NE 1/4 of Section 16, T4N, R62W, 6th P.M., Weld County, Colorado.

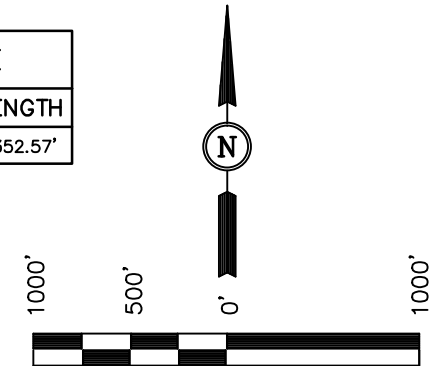
**BASIS OF ELEVATION**

SPOT ELEVATION LOCATED AT THE NORTHEAST CORNER OF SECTION 24, T5N, R62W, 6th P.M. TAKEN FROM THE POINT OF ROCKS, QUADRANGLE, COLORADO, WELD COUNTY, 7.5 MINUTE QUAD (TOPOGRAPHIC MAP) PUBLISHED BY THE UNITED STATES DEPARTMENT OF THE INTERIOR, GEOLOGICAL SURVEY. SAID ELEVATION IS MARKED AS BEING 4530 FEET.

**BASIS OF BEARINGS**

BASIS OF BEARINGS IS A G.P.S. OBSERVATION.

LINE TABLE		
LINE	DIRECTION	LENGTH
L1	S78°45'36"W	1352.57'



**CERTIFICATION**

THIS IS TO CERTIFY THAT THE ABOVE PLAT WAS PREPARED FROM FIELD NOTES OF ACTUAL SURVEYS MADE BY ME OR UNDER MY SUPERVISION AND THAT THE SAME ARE TRUE AND CORRECT TO THE BEST OF MY KNOWLEDGE AND BELIEF.

REGISTERED LAND SURVEYOR  
REGISTRATION NO. 28285  
STATE OF COLORADO 05-15-14

**UINTAH ENGINEERING & LAND SURVEYING**

85 SOUTH 200 EAST - VERNAL, UTAH 84078

(435) 789-1017

SCALE 1" = 1000'	DATE SURVEYED: 01-16-14	DATE DRAWN: 01-20-14
PARTY CALVIN BECKLER G.B. J.W.	REFERENCES G.L.O. PLAT	
WEATHER COLD	FILE BILL BARRETT CORPORATION	