

HALLIBURTON

DEJOUR ENERGY (USA) CORP

**Federal 6/7-14-21
MAMMCREEK
Garfield County , Colorado**

Cement Surface Casing
05-Apr-2013

Job Site Documents

The Road to Excellence Starts with Safety

Sold To #: 364491		Ship To #: 2989906		Quote #:		Sales Order #: 900343257	
Customer: DEJOUR ENERGY (USA) CORP				Customer Rep: Morris, John			
Well Name: Federal			Well #: 6/7-14-21		API/UWI #: 05-045-21180		
Field: MAMMCREEK		City (SAP): SILT		County/Parish: Garfield		State: Colorado	
Lat: N 39.509 deg. OR N 39 deg. 30 min. 30.816 secs.				Long: W 107.556 deg. OR W -108 deg. 26 min. 38.119 secs.			
Contractor: Patterson			Rig/Platform Name/Num: 313				
Job Purpose: Cement Surface Casing							
Well Type: Development Well			Job Type: Cement Surface Casing				
Sales Person: SCOTT, KYLE			Srv Supervisor: KUKUS, CHRISTOPHER			MBU ID Emp #: 413952	

Job Personnel

HES Emp Name	Exp Hrs	Emp #	HES Emp Name	Exp Hrs	Emp #	HES Emp Name	Exp Hrs	Emp #
GOWEN, WESLEY M	7.5	496205	KUKUS, CHRISTOPHER A	7.5	413952	ROMKEE, DALE Alan	7.5	488215
SIMINEO, JEROD M	7.5	479954						

Equipment

HES Unit #	Distance-1 way	HES Unit #	Distance-1 way	HES Unit #	Distance-1 way	HES Unit #	Distance-1 way
10296152C	75 mile	10297346	75 mile	10867423	75 mile	11071559	75 mile
11562538	75 mile	11583931	75 mile	11808849	75 mile		

Job Hours

Date	On Location Hours	Operating Hours	Date	On Location Hours	Operating Hours	Date	On Location Hours	Operating Hours
04/05/2013	7.5	3						

TOTAL Total is the sum of each column separately

Job

Formation Name	Formation Depth (MD)	Top	Bottom	Form Type	Job depth MD	Job Depth TVD	Water Depth	Perforation Depth (MD)	From	To
				BHST	1210. ft	1210. ft	Wk Ht Above Floor			
						5. ft				

Job Times

Date	Time	Time Zone
05 - Apr - 2013	04:45	MST
05 - Apr - 2013	09:30	MST
05 - Apr - 2013	14:44	MST
05 - Apr - 2013	15:50	MST
05 - Apr - 2013	17:00	MST

Well Data

Description	New / Used	Max pressure psig	Size in	ID in	Weight lbm/ft	Thread	Grade	Top MD ft	Bottom MD ft	Top TVD ft	Bottom TVD ft
OPEN HOLE				13.5					1210.		
SURFACE CASING	New		9.625	9.001	32.3		I-80		1209.3		

Sales/Rental/3rd Party (HES)

Description	Qty	Qty uom	Depth	Supplier
CTRZR ASSY,TURBO,API,9 5/8 CSG X 12 1/4	12	EA		
SHOE,GID,9-5/8 8RD	1	EA		
COLLAR-STOP-9 5/8"-FRICTION-HINGED	1	EA		
BASKET - CEMENT - 9-5/8 CSG X 12-1/4	2	EA		
CLR,FLT,TROPHY SEAL, 9-5/8 8RD	1	EA		
KIT,HALL WELD-A	1	EA		
PLUG,CMTG,TOP,9 5/8,HWE,8.16 MIN/9.06 MA	1	EA		

Tools and Accessories

Type	Size	Qty	Make	Depth	Type	Size	Qty	Make	Depth	Type	Size	Qty	Make
Guide Shoe					Packer					Top Plug	9 5/8	1	HES
Float Shoe	9 5/8	1		1209.28	Bridge Plug					Bottom Plug			
Float Collar	9 5/8	1		1166.53	Retainer					SSR plug set			
Insert Float										Plug Container	9 5/8	1	HES

HALLIBURTON

Cementing Job Summary

Stage Tool										Centralizers			
Miscellaneous Materials													
Gelling Agt		Conc		Surfactant		Conc		Acid Type		Qty		Conc	%
Treatment Fld		Conc		Inhibitor		Conc		Sand Type		Size		Qty	
Fluid Data													
Stage/Plug #: 1													
Fluid #	Stage Type	Fluid Name			Qty	Qty uom	Mixing Density lbm/gal	Yield ft ³ /sk	Mix Fluid Gal/sk	Rate bbl/min	Total Mix Fluid Gal/sk		
1	Gel Water				20.00	bbl	8.5	.0	.0	4			
	10 lbm/Mgal	HALLIBURTON GEL, 50 LB SK (100064040)											
2	VersaCem GJ1 Lead Cement	VERSACEM (TM) SYSTEM (452010)			170.0	sacks	12.3	2.38	13.75	7	13.75		
	13.75 Gal	FRESH WATER											
3	VariCem GJ1 Tail Cement	VERSACEM (TM) SYSTEM (452010)			165.0	sacks	12.8	2.11	11.75	7	11.75		
	11.75 Gal	FRESH WATER											
4	Displacement				91.00	bbl	8.33	.0	.0	10			
5	Top Out Cement	CMT - PREMIUM - CLASS G, 94 LB SK (100003685)				sacks	14.8	1.34	6.36		6.36		
	94 lbm	CMT - PREMIUM - CLASS G REG OR TYPE V, BULK (100003685)											
	2 %	CALCIUM CHLORIDE, PELLET, 50 LB (101509387)											
	6.36 Gal	FRESH WATER											
Calculated Values		Pressures			Volumes								
Displacement	91.8	Shut In: Instant			Lost Returns		0	Cement Slurry		134.1	Pad		
Top Of Cement	SURFACE	5 Min			Cement Returns		33	Actual Displacement		91.8	Treatment		
Frac Gradient		15 Min			Spacers		20	Load and Breakdown			Total Job		245.9
Rates													
Circulating		Mixing		7	Displacement		10	Avg. Job					
Cement Left In Pipe	Amount	42.7 ft	Reason	Shoe Joint									
Frac Ring # 1 @	ID	Frac ring # 2 @	ID	Frac Ring # 3 @	ID	Frac Ring # 4 @	ID						
The Information Stated Herein Is Correct				Customer Representative Signature									

The Road to Excellence Starts with Safety

Sold To #: 364491		Ship To #: 2989906		Quote #:		Sales Order #: 900343257	
Customer: DEJOUR ENERGY (USA) CORP				Customer Rep: Morris, John			
Well Name: Federal			Well #: 6/7-14-21		API/UWI #: 05-045-21180		
Field: MAMMCREEK		City (SAP): SILT		County/Parish: Garfield		State: Colorado	
Legal Description:							
Lat: N 39.509 deg. OR N 39 deg. 30 min. 30.816 secs.				Long: W 107.556 deg. OR W -108 deg. 26 min. 38.119 secs.			
Contractor: Patterson			Rig/Platform Name/Num: 313				
Job Purpose: Cement Surface Casing					Ticket Amount:		
Well Type: Development Well			Job Type: Cement Surface Casing				
Sales Person: SCOTT, KYLE			Srv Supervisor: KUKUS, CHRISTOPHER			MBU ID Emp #: 413952	

Activity Description	Date/Time	Cht #	Rate bbl/min	Volume bbl		Pressure psig		Comments
				Stage	Total	Tubing	Casing	
Call Out	04/05/2013 04:45							ELITE # 9
Depart Yard Safety Meeting	04/05/2013 07:00							ALL HES EMPLOYEES
Arrive At Loc	04/05/2013 09:30							RIG PULLING DRILL PIPE HES CREW ARRIVED 1 HOUR LATE HES CREW WAS SHORT CALLED HES CREW SPOTTED EQUIPMENT AND RIGGED UP
Assessment Of Location Safety Meeting	04/05/2013 09:35							ALL HES EMPLOYEES
Pre-Rig Up Safety Meeting	04/05/2013 09:40							ALL HES EMPLOYEES
Rig-Up Equipment	04/05/2013 09:45							1 F-550 PICKUP 1 HT-400 PUMP TRUCK 1 660 BULK TRUCK IRON TO RIG FLOOR, SUCTION HOSES TO FRESH WATER SUPPLY, BULK HOSE TO BULK TRUCK
Pre-Job Safety Meeting	04/05/2013 14:30							ALL HES EMPLOYEES AND RIG CREW
Start Job	04/05/2013 14:44							TD: 1210 TP: 1209.28 SJ: 42.75 CSG: 9 5/8 32.3# OH: 13 1/2 MUD WT 8.9 VISC: 70 RIG WILL CIRCULATE HOLE FOR 30 MINS BEFORE CEMENT JOB
Test Lines	04/05/2013 14:47					5083. 0		PRESSURE TEST OK

Sold To #: 364491

Ship To #: 2989906

Quote #:

Sales Order #: 900343257

SUMMIT Version: 7.3.0078

Friday, April 05, 2013 04:16:00

Cementing Job Log

Activity Description	Date/Time	Cht #	Rate bbl/ min	Volume bbl		Pressure psig		Comments
				Stage	Total	Tubing	Casing	
Pump Spacer	04/05/2013 14:54		4	20	20		110.0	GEL SPACER
Pump Lead Cement	04/05/2013 14:59		7	72.1	72.1		317.0	170 SKS 12.3 PPG 2.38 YEILD 13.75 GAL / SK LEAD CEMENT WEIGHT VERIFIED VIA MUD SCALES THROUGH OUT LEAD CEMENT
Pump Tail Cement	04/05/2013 15:10		7	62	62		340.0	165 SKS 12.8 PPG 2.11 YEILD 11.75 GAL / SK TAIL CEMENT WEIGHT VERIFIED VIA MUD SCALES THROUGH OUT TAIL CEMENT
Shutdown	04/05/2013 15:19							SHUTDOWN END OF CEMENT / READY TUB FOR DISPLACEMENT
Drop Plug	04/05/2013 15:20							PLUG AWAY NO PROBLEMS
Pump Displacement	04/05/2013 15:23		10	81.8	81.8		408.0	FRESH WATER DISPLACEMENT HES WASHED UP ON TOP OF PLUG PER CO-REP REQUEST @ 40BBLS GONE 4X4 LOST PRIME HES SLOW RATE TO FIX THE PROBLEM @ 55BBLS HES REGAINED RATE TO 6 BBLS MIN
Slow Rate	04/05/2013 15:39		2	10	10		275.0	SLOW RATE TO BUMP PLUG
Bump Plug	04/05/2013 15:43		2	91.8	91.8		300.0	BUMP PLUG @ 300 AND TOOK PRESSURE UP TO 890 PSI
Check Floats	04/05/2013 15:48							FLOATS HELD 1 BBL BACK TO DISPLACEMENT TANKS
Activity Description	Date/Time	Cht #	Rate bbl/ min	Volume bbl		Pressure psig		Comments
				Stage	Total	Tubing	Casing	

Sold To #: 364491

Ship To #: 2989906

Quote #:

Sales Order #: 900343257

SUMMIT Version: 7.3.0078

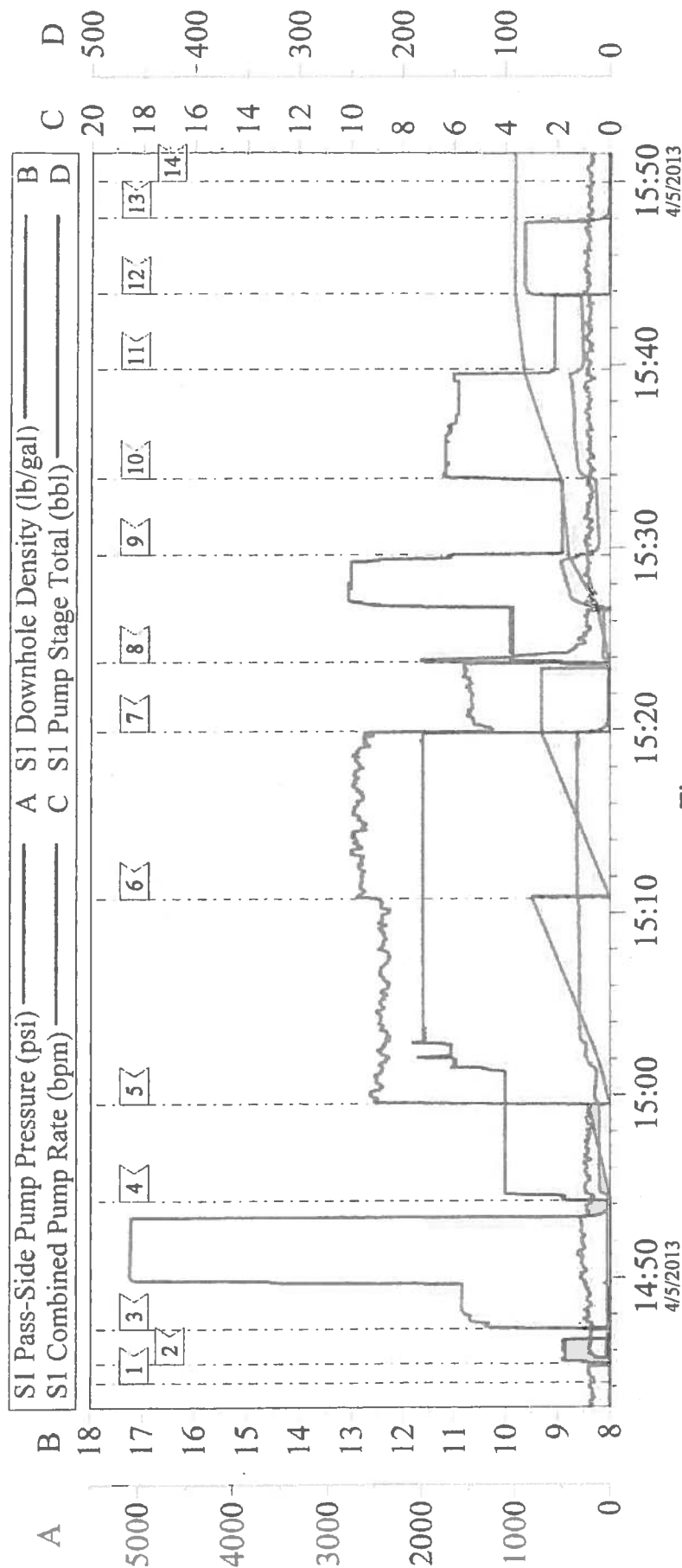
Friday, April 05, 2013 04:16:00

Cementing Job Log

End Job	04/05/2013 15:50							WELL HAD GOOD CIRCULATION THROUGH OUT CEMENT JOB GOT 33 BBL'S OF CEMENT TO SURFACE RIG USED 100LB'S OF SUGAR NO TICKET CHANGES HES LEFT TOP OUT TRUCK ON LOCATION
Pre-Rig Down Safety Meeting	04/05/2013 16:00							ALL HES EMPLOYEES
Rig-Down Equipment	04/05/2013 16:10							RIG FLOOR, IRON TO TRUCK, SUCTION HOSE, BULK HOSE, WASH UP PUMP
Pre-Convoy Safety Meeting	04/05/2013 16:50							ALL HES EMPLOYEES
Crew Leave Location	04/05/2013 17:00							THANKS FOR USING HALLIBURTON CEMENT CHRIS KUKUS AND CREW

DEJOUR ENERGY / FEDERAL 6/7-14-21

9 5/8 SURFACE



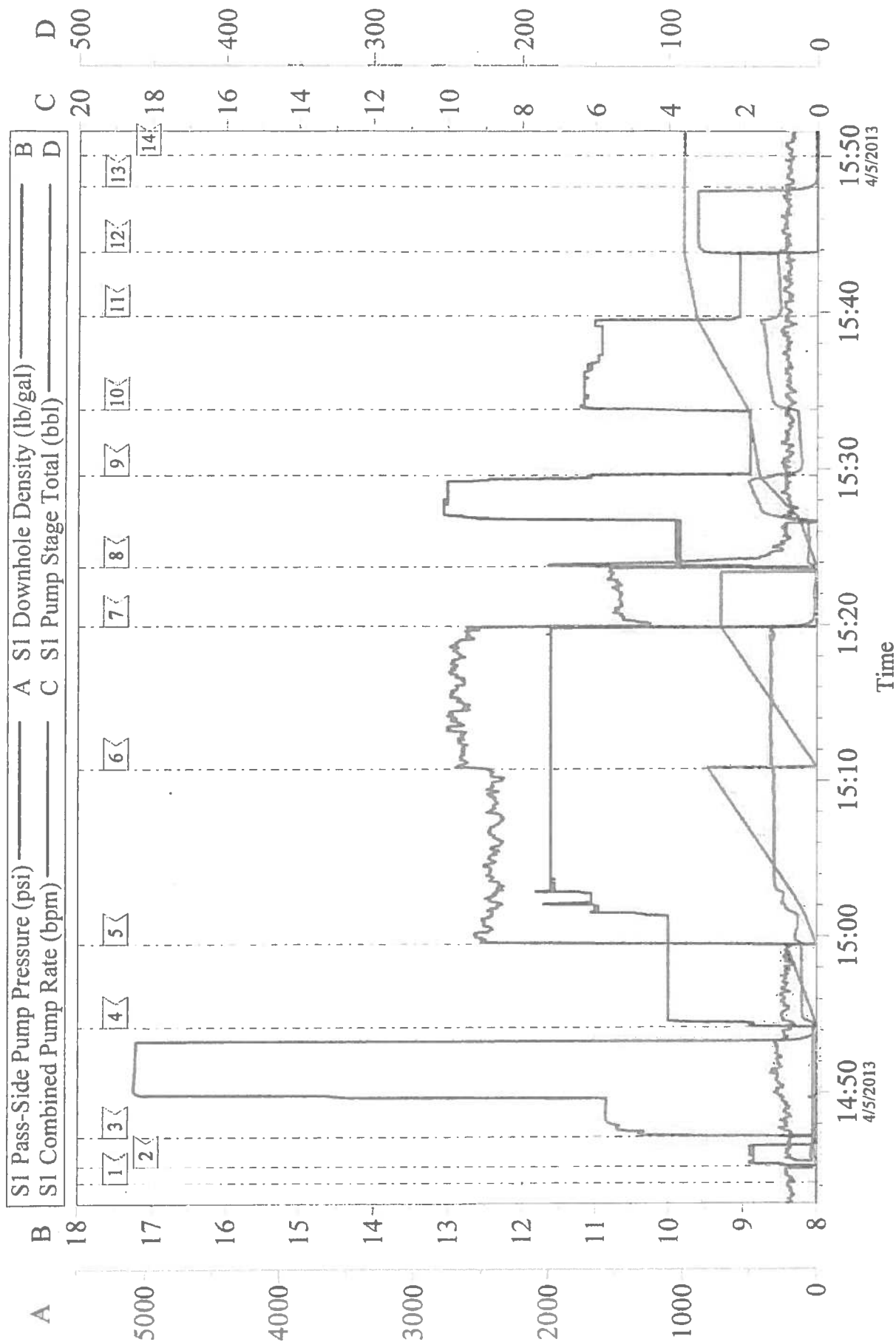
Local Event Log

1 START JOB	14:44:14	2 FILL LINES	14:45:18
3 TEST LINES	14:47:11	4 PUMP GET SPACER	14:54:12
5 PUMP LEAD CEMENT	14:59:32	6 PUMP TAIL CEMENT	15:10:47
7 SHUTDOWN / DROP PLUG	15:19:55	8 PUMP FRESH WATER DISPLACEMENT	15:23:43
9 LOST PRIME ON 4X4	15:29:36	10 RESUME DISPLACEMENT	15:33:48
11 SLOW RATE	15:39:45	12 BUMP PLUG	15:43:53
13 CHECK FLOATS	15:48:01	14 END JOB	15:50:01

Customer: DEJOUR ENERGY	Job Date: 05-Apr-2013	Sales Order #: 900343257
Well Description: FEDERAL 6/7-14-21	Job Type: SURFACE	ADC Used: YES
Company Rep: JOHN MORRIS	Cement Supervisor: CHRIS KUKUS	Elite # 9: WESLEY GOWEN

DEJOUR ENERGY / FEDERAL 6/7-14-21

9 5/8 SURFACE



Customer: DEJOUR ENERGY	Job Date: 05-Apr-2013	Sales Order #: 900343257
Well Description: FEDERAL 6/7-14-21	Job Type: SURFACE	ADC Used: YES
Company Rep: JOHN MORRIS	Cement Supervisor: CHRIS KUKUS	Elite # 9: WESLEY GOWEN

OptiCem v6.4.10
05-Apr-13 16:02