



Western Water & Land, Inc.

June 24, 2013

Mr. Brandon Danforth  
Environmental Specialist  
WPX Energy  
1058 County Road 215  
Parachute, Colorado 81635

**RE: RG 24-29-298 Drill Pad Baseline Water Quality Evaluation**

Dear Mr. Danforth,

Western Water & Land, Inc. (WWL) has completed a hydrologic water source evaluation for the WPX Energy Rocky Mountain LLC (WPX) RG 24-29-298 Drill Pad in accordance with COGCC Rule 609. Drill Pad RG 24-29-298 is located in SE1/4, SW1/4, Section 29, Township 2 S, Range 98 W, 6 PM. The evaluation considered all water sources as defined in Rule 609 within a 0.5-mile radius of the referenced drill pad. Water sources located on the basis of section quarters were included in the evaluation if the any portion of the section quarter(s) lies within the 0.5-mile radius area. A preliminary screening of the water sources was completed to identify the sources considered to be potentially available for sampling pending results of the owner questionnaire and field inspections to verify sampling feasibility and the consent of the structure owners. Each potentially available water source was then evaluated to identify the preferred sources for the baseline program. If the resulting number of potentially available sources was four or less, all of the sources were included in the list of preferred sources. If more than four sources were potentially available, the sources were prioritized based on WWL's hydrologic knowledge of the region, general hydrologic rationale, and in accordance with the guidelines specified in Rule 609.

**Water Sources**

Water sources as defined in Rule 609 include water wells registered with the Colorado Division of Water Resources (DWR), permitted or adjudicated springs, and monitoring wells installed for baseline sampling and monitoring under COGCC Rules 318A.e(4), 608, or 609. Water sources located within a 0.5-mile radius of the RG 24-29-298 Drill Pad are shown in Figure 1. No water sources were identified to fall within the 0.5-mile radius area.

If you have any questions or concerns, please contact me at (970) 242-0170.

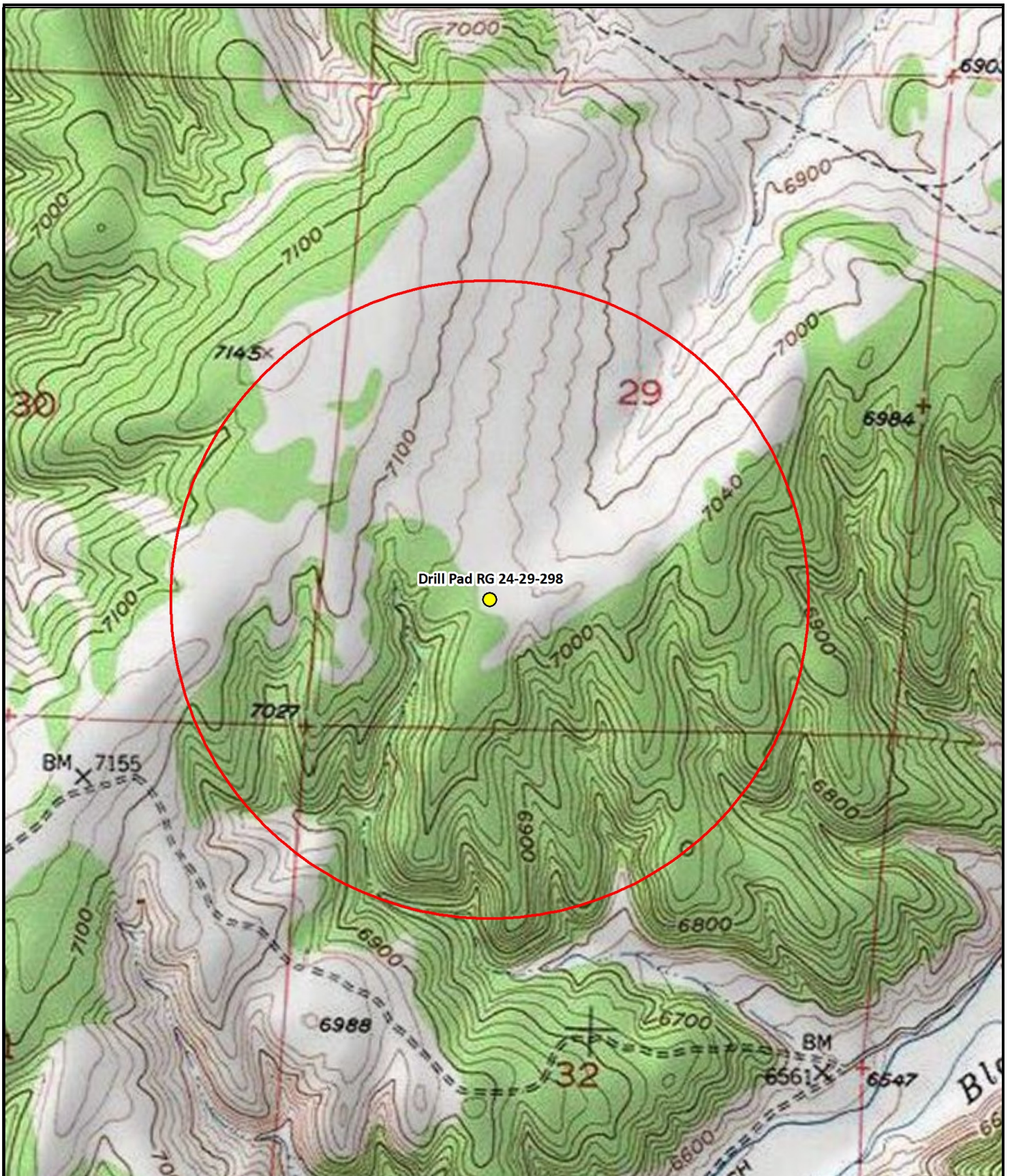
Sincerely,

Bruce D. Smith  
Principal Hydrogeologist  
WESTERN WATER & LAND, INC.

Mr. Brandon Danforth  
June 17, 2013  
Page 2

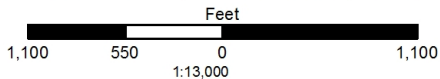
Attachments





**Legend**

- Decree
- Constructed well
- Monitoring hole
- Drill Pad RG 24-29-298
- 0.5-Mile Radius Evaluation Area
- No permit or not completed



**Figure 1: Drill Pad Location RG 24-29-298  
0.5 Mile Radius Water Source Evaluation  
SE1/4, SW1/4, S29, T2S, R98W, 6 PM**

Rio Blanco, Colorado

WPX Energy Rocky Mountain LLC

Basemap Source: Esri ArcGIS Online



Western Water & Land, Inc.  
Applications in Earth Science