

RT Scanner

Processed Result

Schlumberger Petro Technical Services

Processed Presentation

COMPANY: Whiting Oil and Gas Corporation		
WELL: Razor 26J-2633L		
FIELD: Wildcat		
COUNTY: Weld		
STATE: Colorado		
COUNTRY: USA		
API No: 05-123-37495-0000 PTS Job Number: -		
Location	Field Location: NWSE, Sec. 26, T 10N, R 58W, SHL: 2251' FSL X 2047' FEL Section 26 Township 10N Range 58W Latitude: 40.8086 Longitude: -103.823	Other Services:
Permanent Datum: GL Elev: 4728 ft		
Log Measured From: KB, 17.3ft above Permanent Datum		
Drilling Measured from: KB		
Date	07-Aug-2013	
Depth Driller	9397 ft	
Depth Logger (Schl)	9397 ft	
Bhn Log Interval	-999.25 ft	
Top Log Interval	-999.25 ft	
Casing-Driller	9.625 in @ 1600 ft	
Casing-Logger	1607 ft	
Bit Size	8.75 in	
Type Fluid in Hole	WATER	
Dens.	9.4 lbm/gal 48 s	
pH	-999.25 -999.25 in3	
Source of Sample	Active Tank	
Rm @ Meas. Temp.	0.64 ohmm @ 69.6 degF	
Rrf @ Meas. Temp.	0.48 ohmm @ 69.6 degF	
Rrc @ Meas. Temp.	0.96 ohmm @ 69.6 degF	
Source: Rrf	Calculated Calculated	
Rm @ BHT	0.199066 @ 240 degF	
Circulation Stopped	06:00:00	
Logger on Bottom	00:01:14	
Max Rec. Temp.	240 deg F	
Equipment	3022 Fort Morgan, CO	
Recorded by:	Heather Hoffman	
Witnessed by:	Brady Hansen	

FOLD HERE

The well name, location and borehole reference data were furnished by the customer

ANY INTERPRETATION, RESEARCH, ANALYSIS, DATA, RESULTS, ESTIMATES, OR RECOMMENDATION FURNISHED WITH THE SERVICES OR OTHERWISE COMMUNICATED BY SCHLUMBERGER TO CUSTOMER AT ANY TIME IN CONNECTION WITH THE SERVICES ARE OPINIONS BASED ON INFERENCES FROM MEASUREMENTS, EMPIRICAL RELATIONSHIPS AND/OR ASSUMPTIONS, WHICH INFERENCES, EMPIRICAL RELATIONSHIPS AND/OR ASSUMPTIONS ARE NOT INFALLIBLE, AND WITH RESPECT TO WHICH PROFESSIONALS IN THE INDUSTRY MAY DIFFER. ACCORDINGLY, SCHLUMBERGER CANNOT AND DOES NOT WARRANT THE ACCURACY, CORRECTNESS OR COMPLETENESS OF ANY SUCH INTERPRETATION, RESEARCH, ANALYSIS, DATA, RESULTS, ESTIMATES OR RECOMMENDATION. CUSTOMER ACKNOWLEDGES THAT IT IS ACCEPTING THE SERVICES "AS IS", THAT SCHLUMBERGER MAKES NO REPRESENTATION OR WARRANTY, EXPRESS OR IMPLIED, OF ANY KIND OR DESCRIPTION IN RESPECT THERETO. SPECIFICALLY, CUSTOMER ACKNOWLEDGES THAT SCHLUMBERGER DOES NOT WARRANT THAT ANY INTERPRETATION, RESEARCH, ANALYSIS, DATA, RESULTS, ESTIMATES, OR RECOMMENDATION IS FIT FOR A PARTICULAR PURPOSE, INCLUDING BUT NOT LIMITED TO COMPLIANCE WITH ANY GOVERNMENT REQUEST OR REGULATORY REQUIREMENT. CUSTOMER FURTHER ACKNOWLEDGES THAT SUCH SERVICES ARE DELIVERED WITH THE EXPLICIT UNDERSTANDING AND AGREEMENT THAT ANY ACTION TAKEN BASED ON THE SERVICES RECEIVED SHALL BE AT ITS OWN RISK AND RESPONSIBILITY AND NO CLAIM SHALL BE MADE AGAINST SCHLUMBERGER AS A CONSEQUENCE THEREOF.

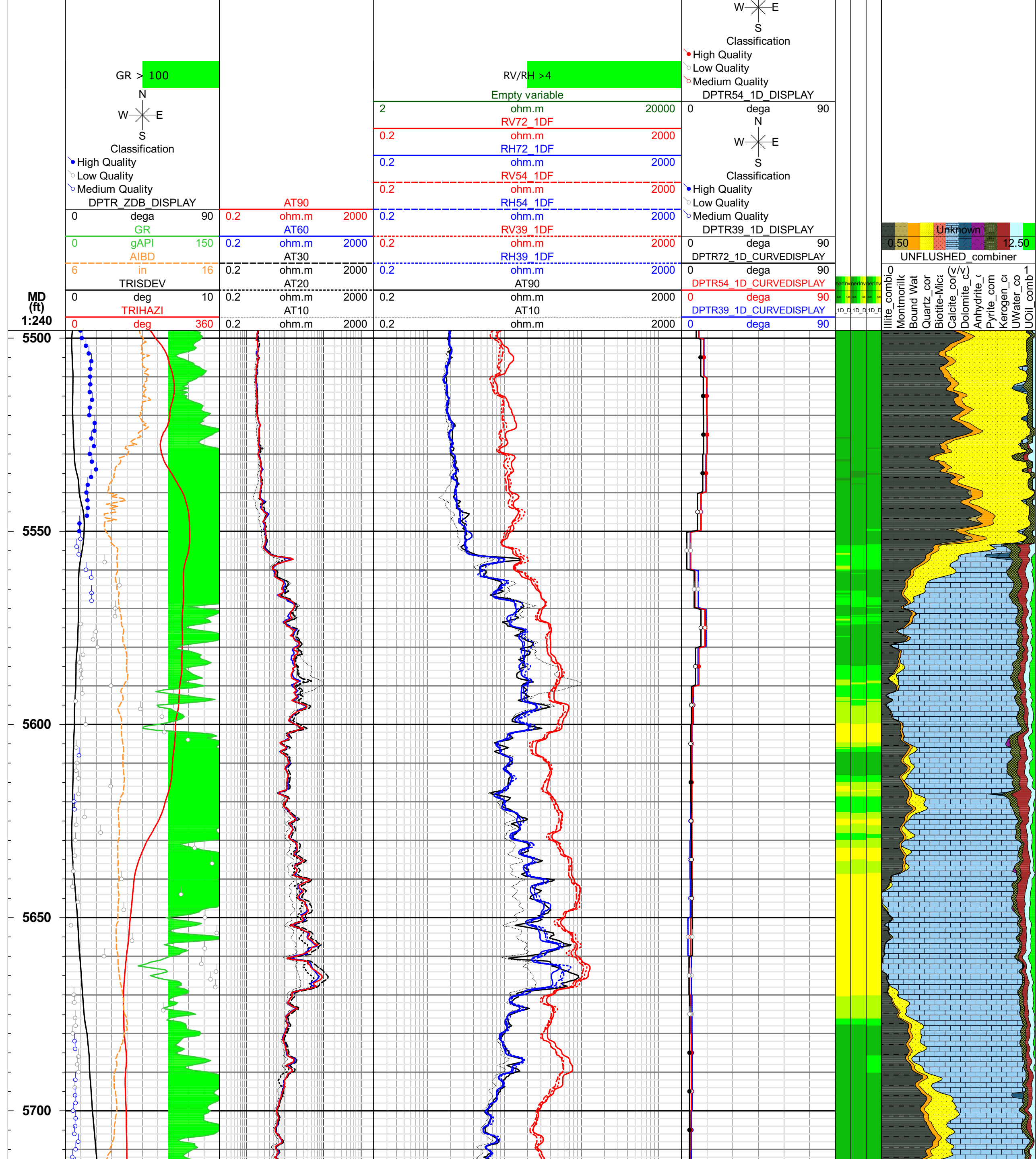
WL Ser. Order # BHDJ-00208	OP Vers.:	Process Date: Aug 15, 2013	Center: Denver Data Services	Baseline: Techlog 2013.1.0	Log Analyst: S. Richards
----------------------------	-----------	----------------------------	------------------------------	----------------------------	--------------------------

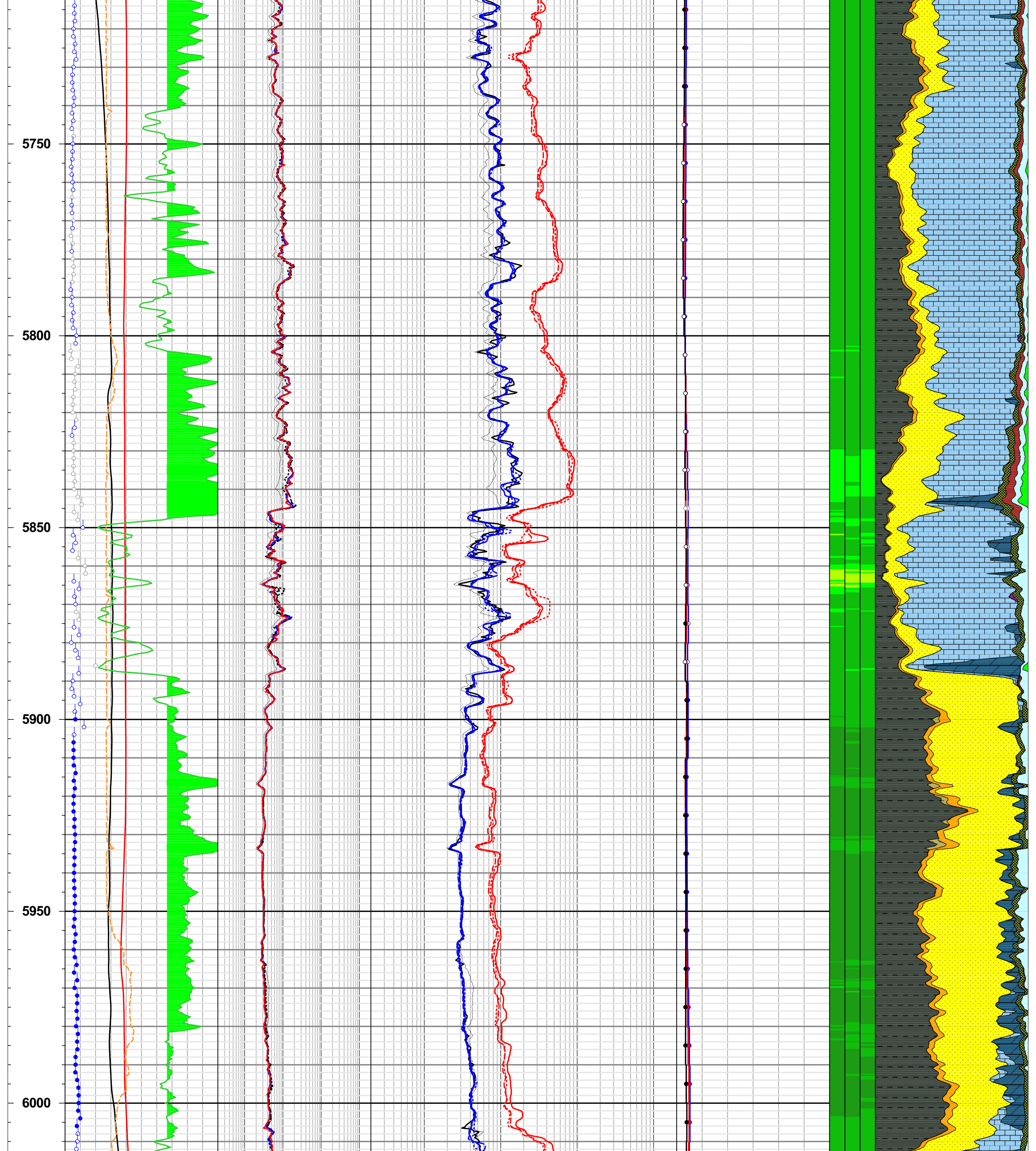
Remarks:

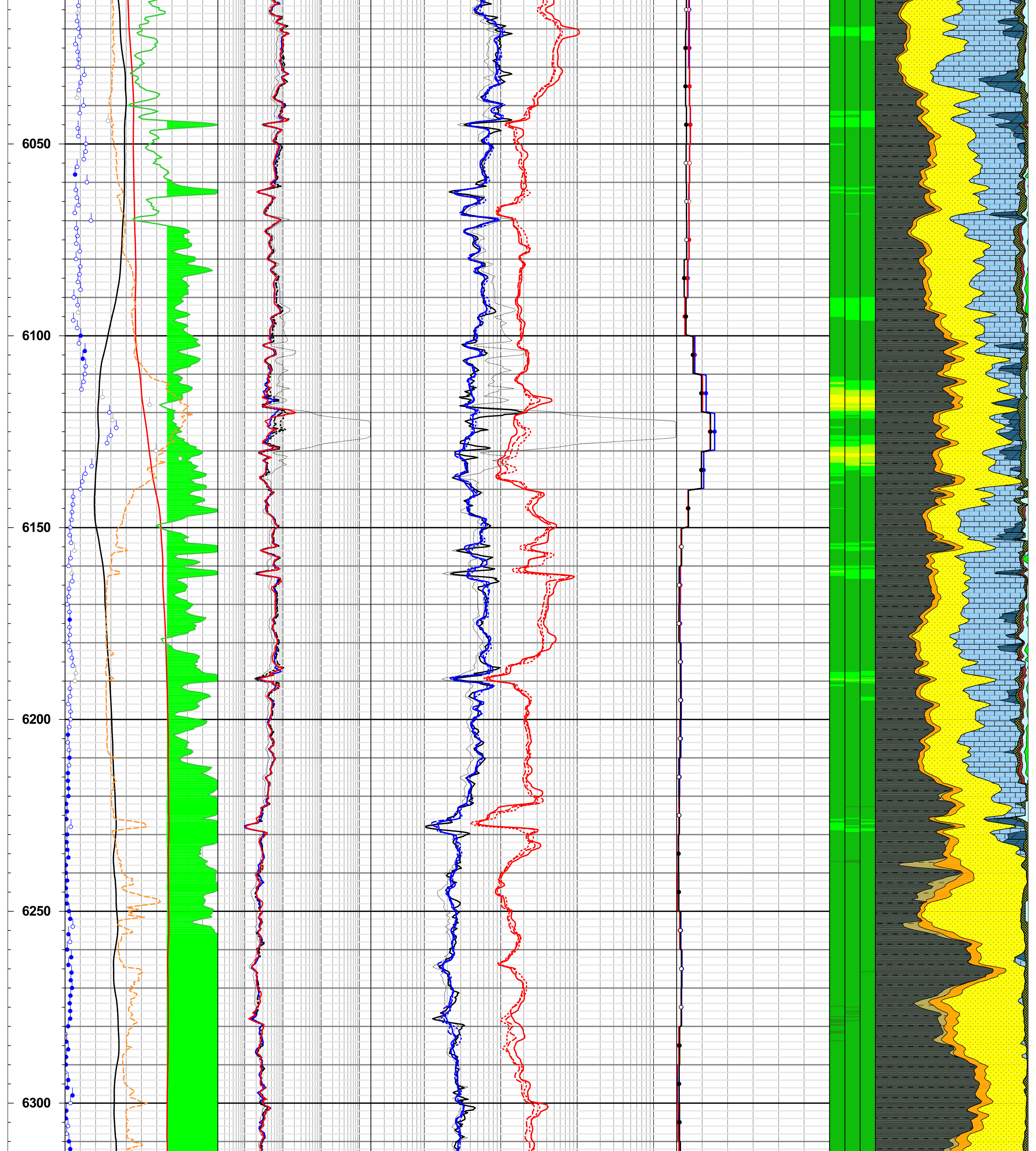
Elan calculated using Dual Water ELAN sturation equation with m=n=2.
Salinities used were 110kppm over Mississippian, ramping down to 45Kppm over the Niobrara.
RW at FT is shown in the ELAN volume summary as a number readout.
Significant washout and poor hole conditions exist over many portions of the well. Pad device readings are adversely affected over these intervals.
Thank you for choosing Schlumberger.

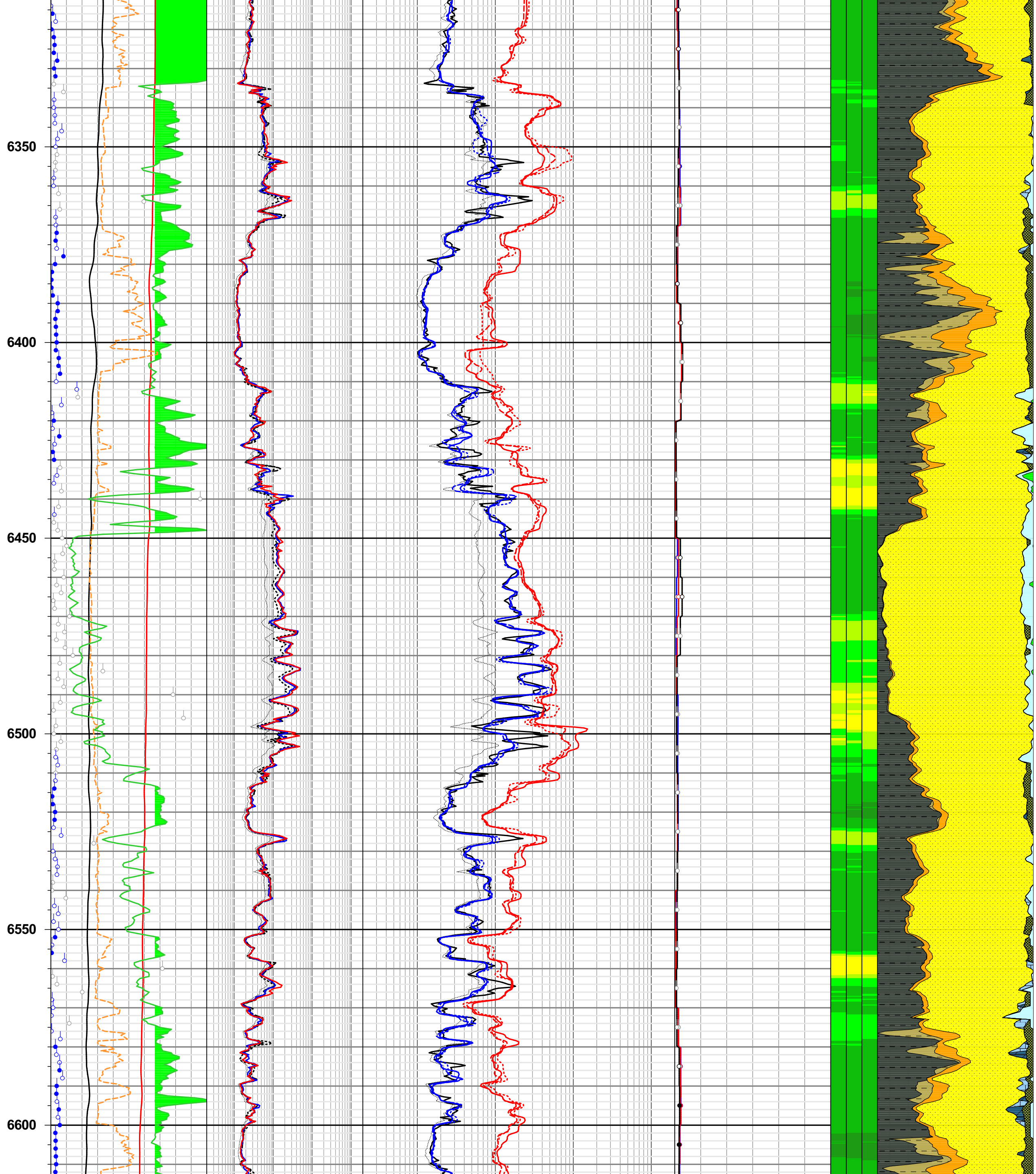
PRELIMINARY PRESENTATION

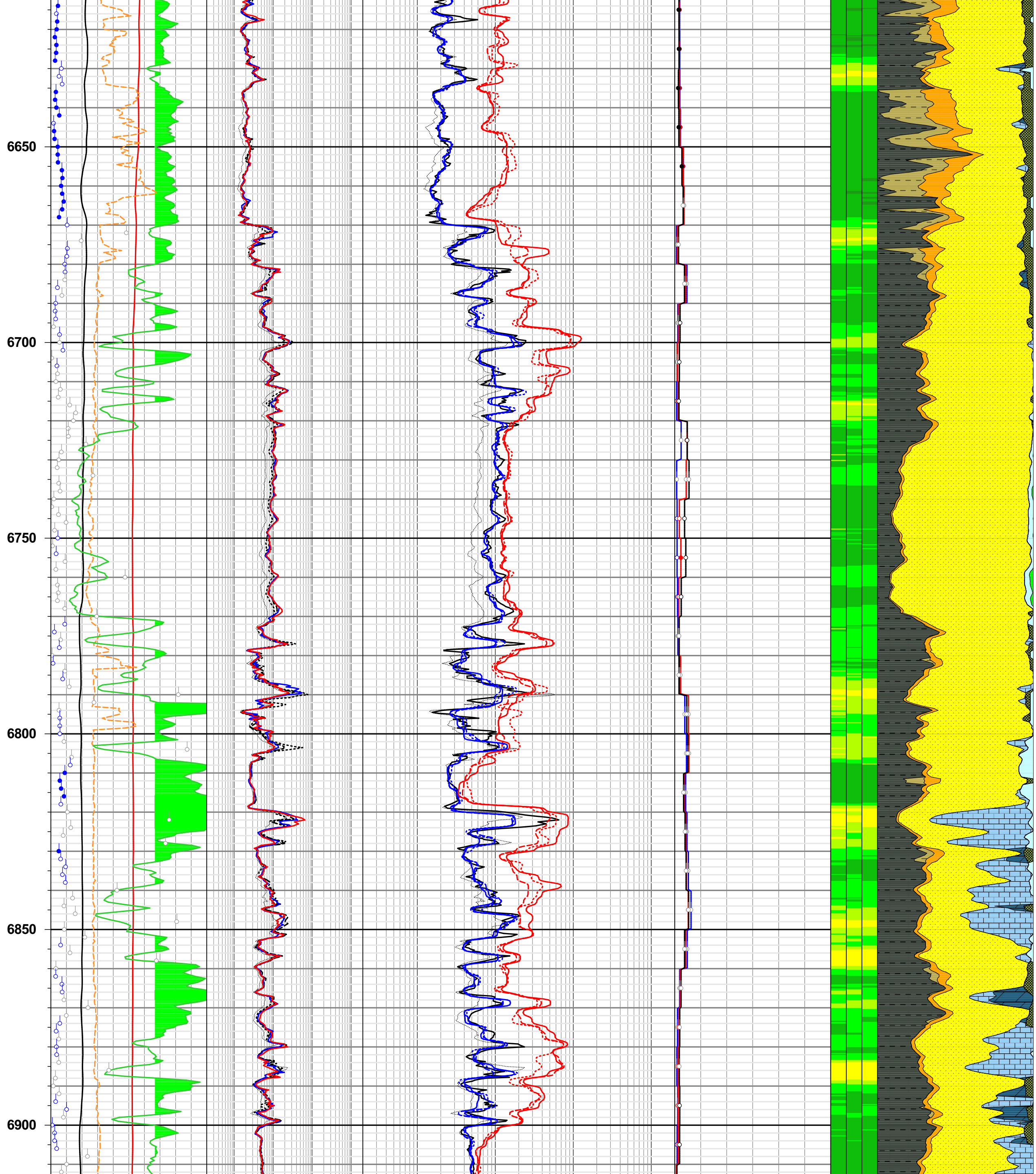


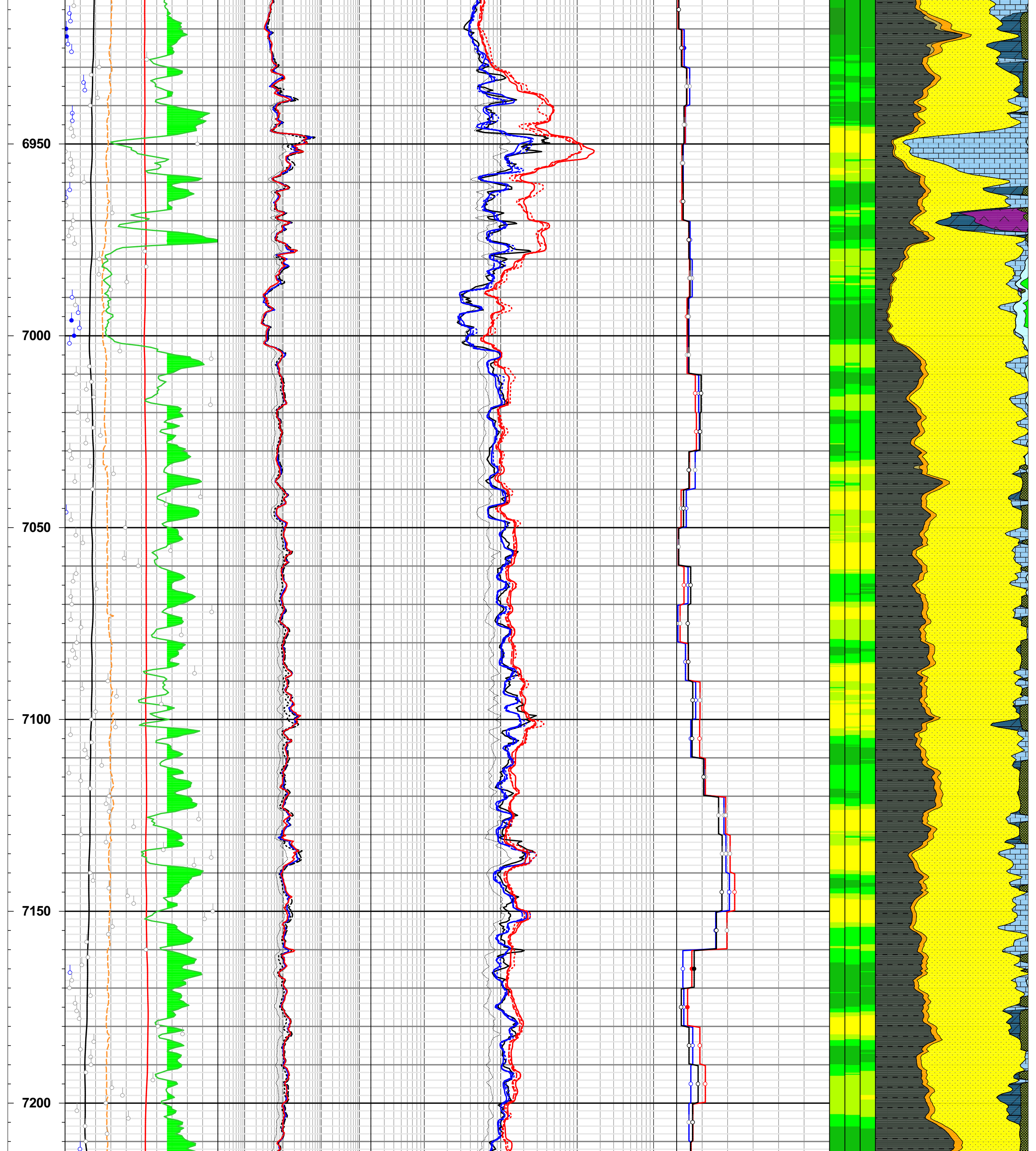


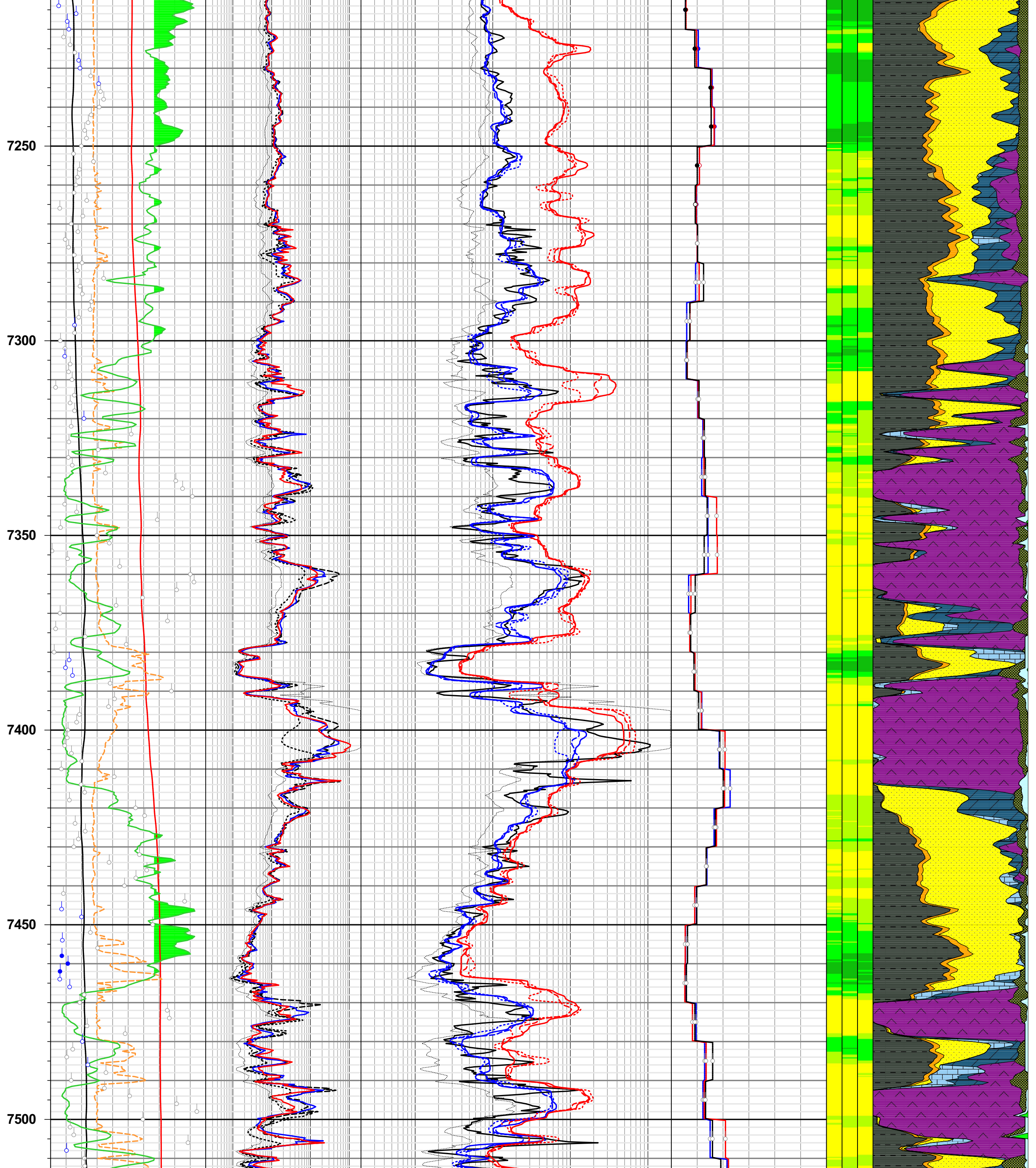


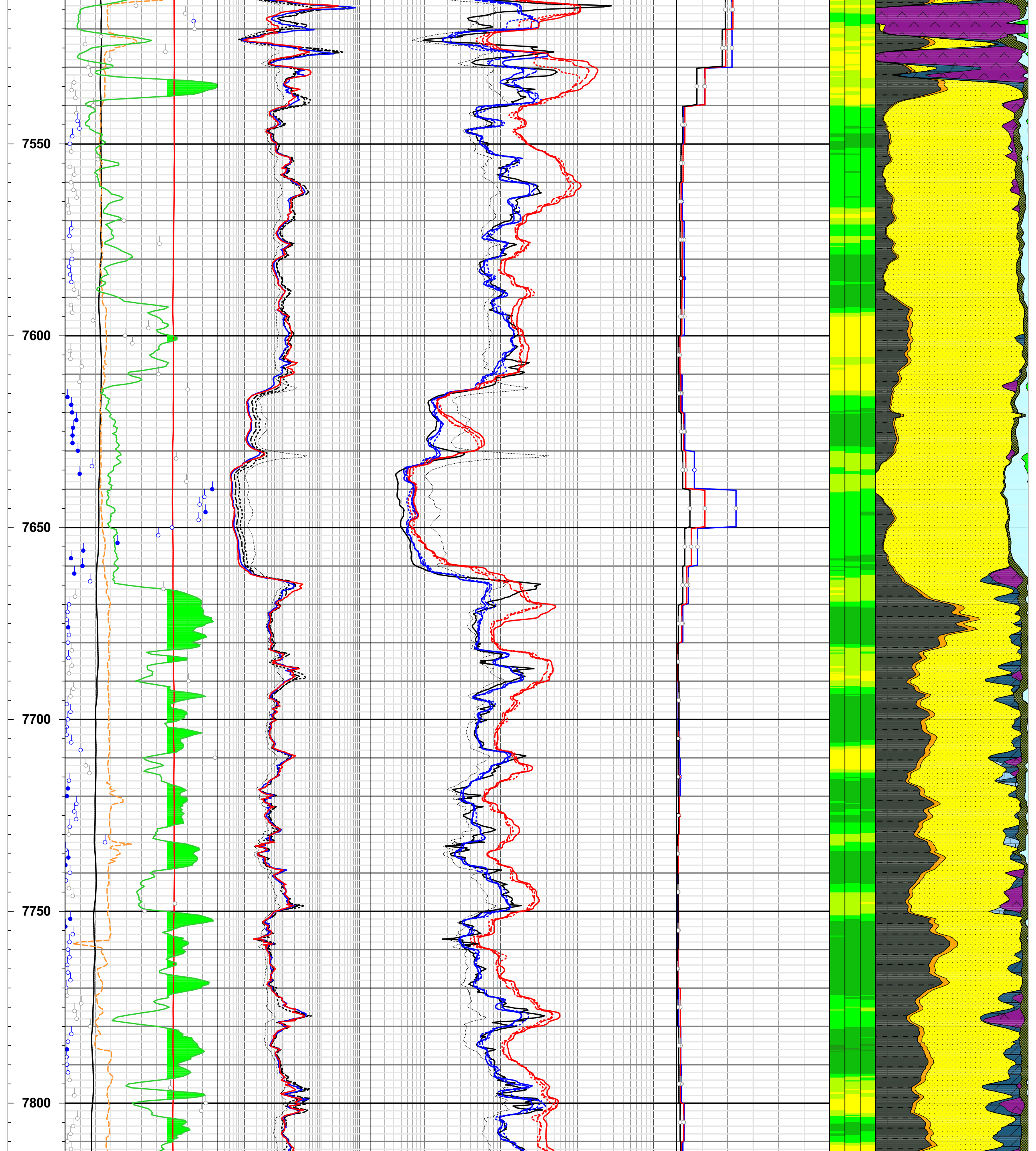


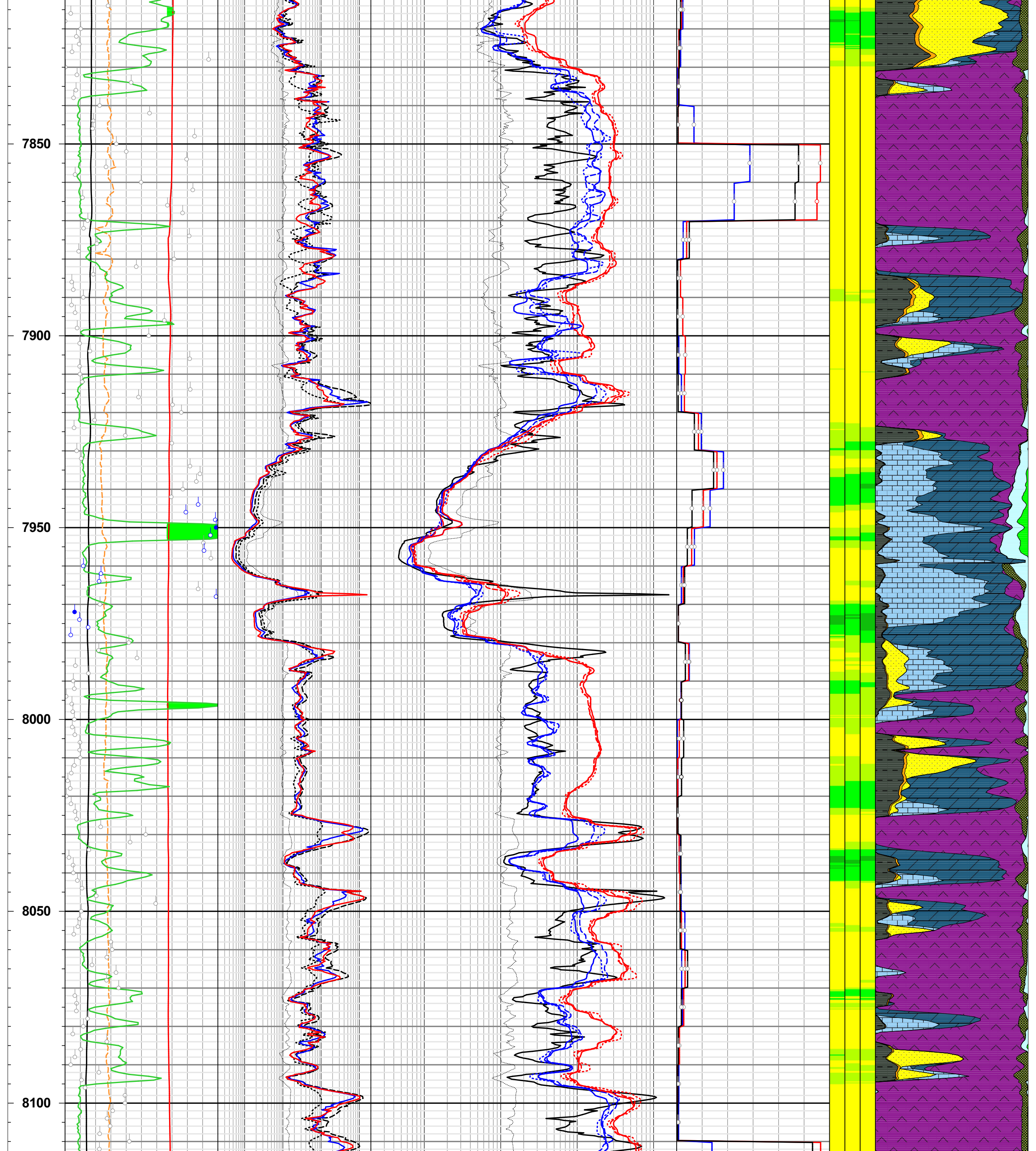


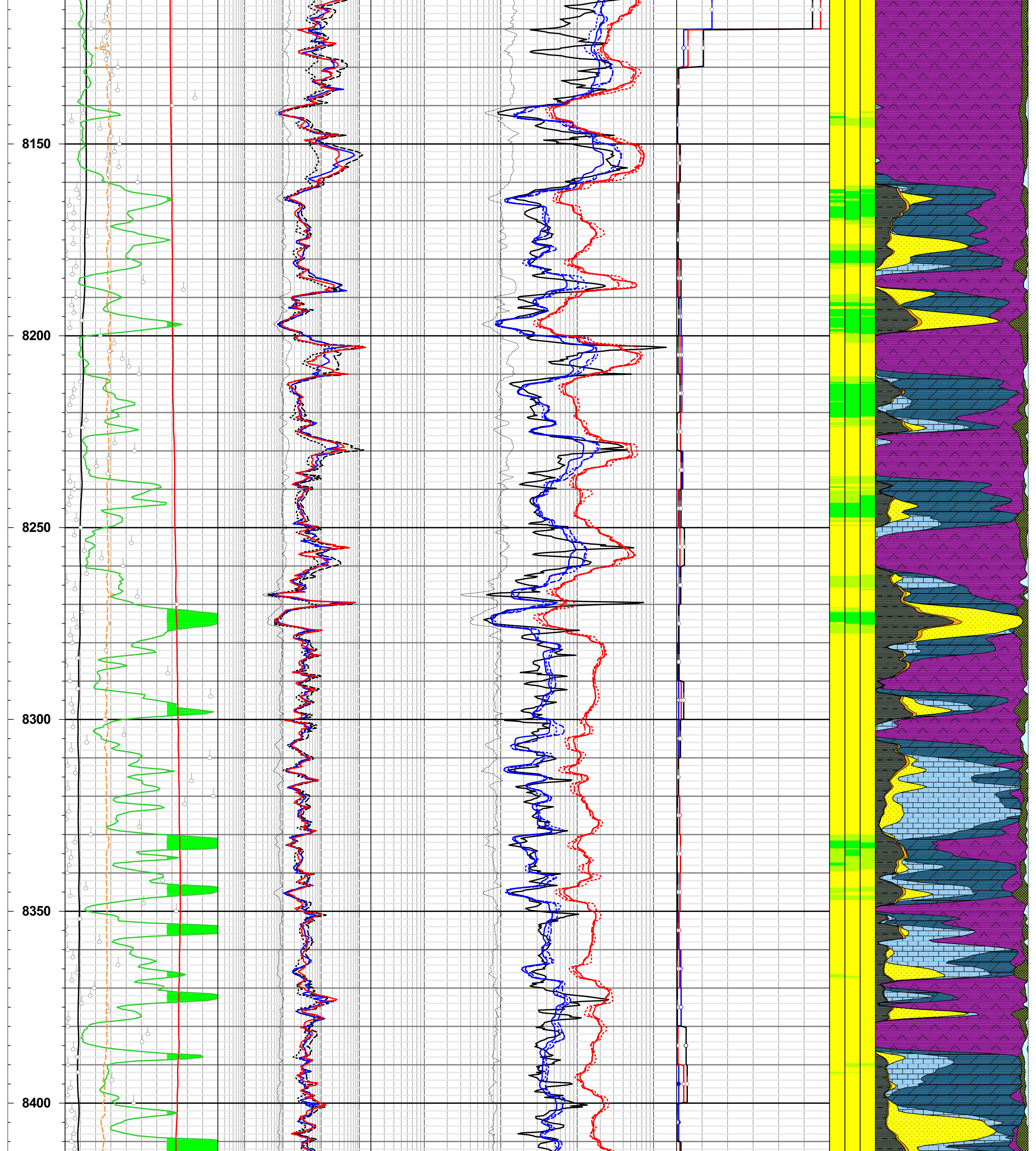


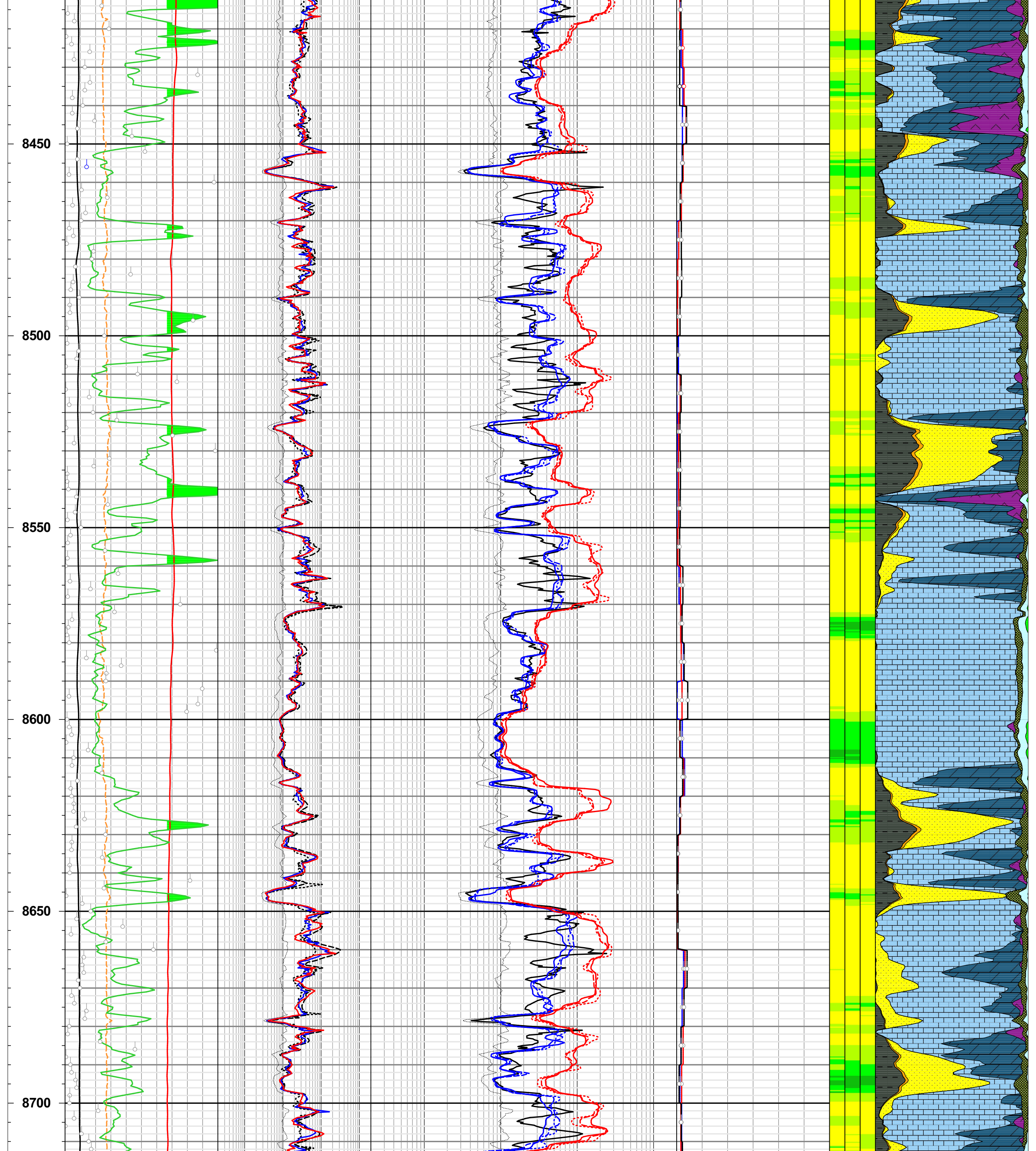


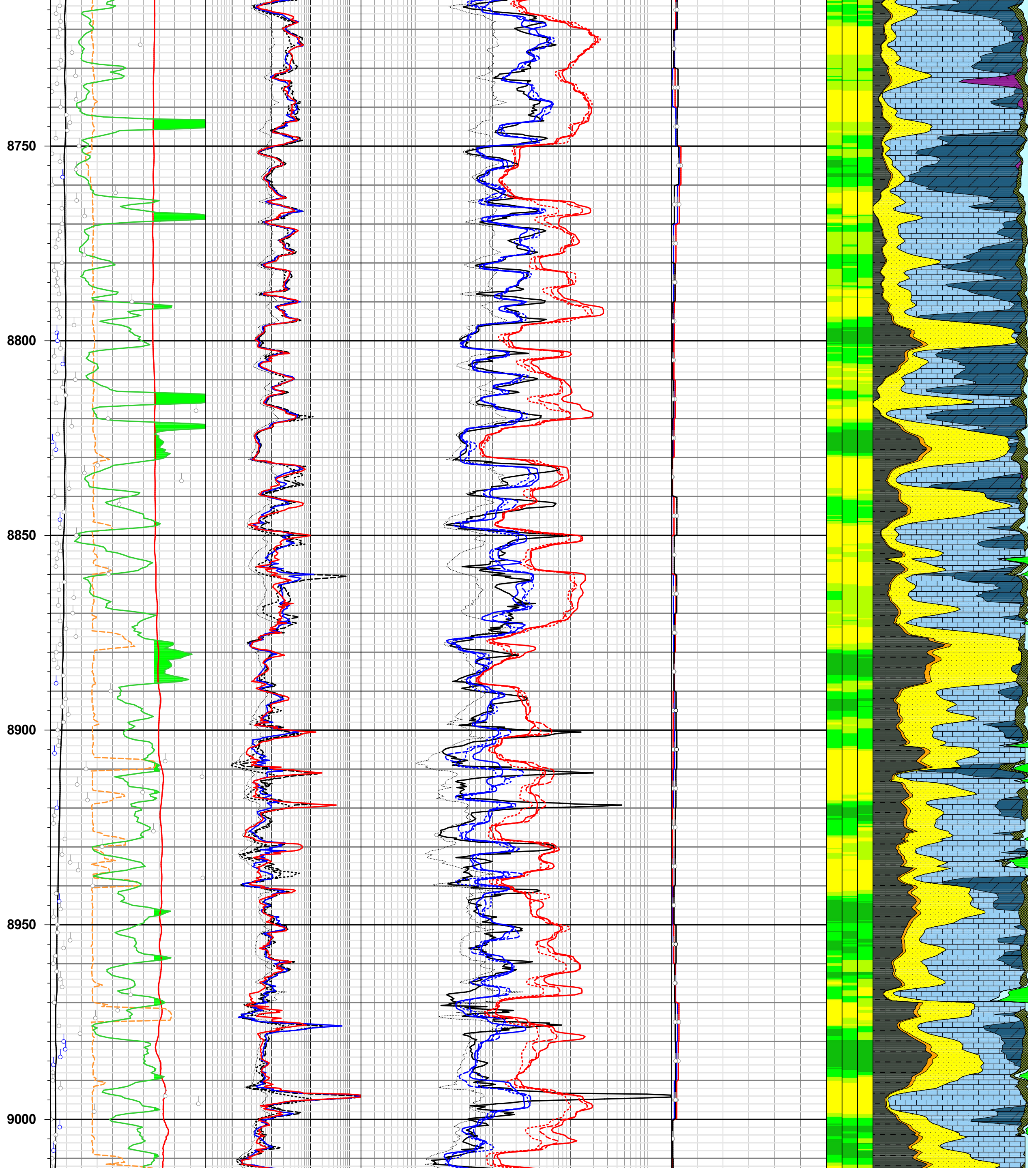


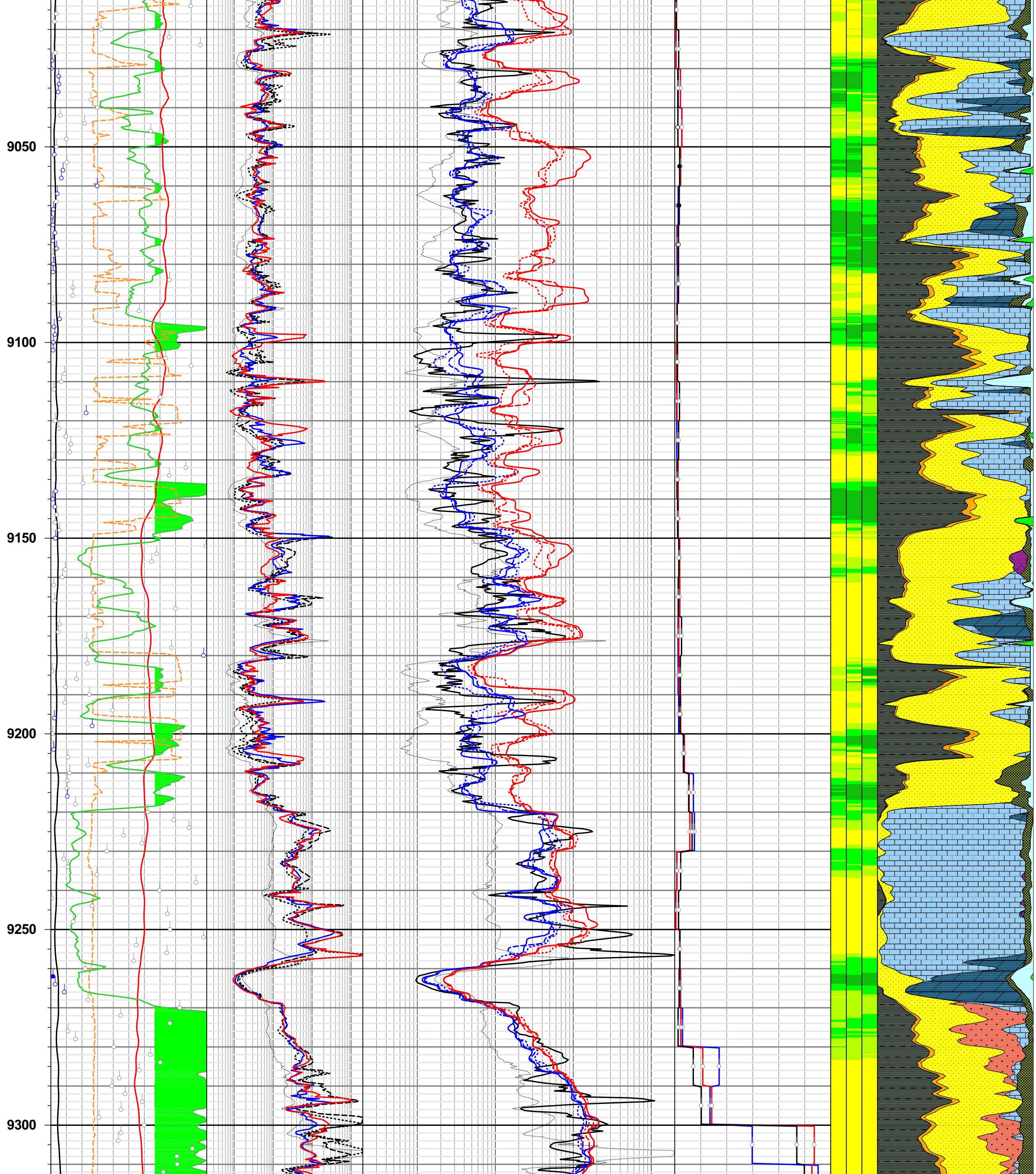












RT Scanner Discussion:

- Processing parameters as per standard.
- Tool LQC shows some zones of high resistivity (yellow) where confidence of calculated result is low.
- Significant resistivity anisotropy is evident in several zones.
- Recommend Thin Bed Advisor to evaluate saturation effects from RV measurement.

COMPANY: Whiting Oil and Gas Corporation
WELL: Razor 26J-2633L
FIELD: Wildcat
COUNTY: Weld
STATE: Colorado
COUNTRY: USA



API No.: 05-123-37495-0000

Date Processed: Aug 15, 2013