



**Scale 1:240 (5"=100') Imperial
Measured Depth Log**

Well Name: Razor 26J-2633L

Location: 26-T10N-R58W Weld County, Colorado

License Number: 05-123-37495

Spud Date: 7/22/2013

Region: Redtail

Drilling Completed:

Surface Coordinates: Lat.: 40.808564 Long.: -103.829478

Bottom Hole Coordinates: Lat.: 40.808564 Long.: -103.829478

Ground Elevation (ft): 4728

K.B. Elevation (ft): 4746

Logged Interval (ft): 5000

To:

Total Depth (ft):

Formation: Pierre, Hygiene, Nlobrara, Bridge Creek, Entrada, Lyons and Cherokee

Type of Drilling Fluid: Water Based Mud

Printed by STRIP.LOG from WellSight Systems 1-800-447-1534 www.WellSight.com

OPERATOR

Company: Whiting Oil & Gas Corporation

Address: 1700 Broadway Suite 2300

Denver, CO 80290

303-837-1661

GEOLOGIST

Name: Craig Dreiling, and Brian Reddick

Company: Acme Geologic Consulting

Address: 108 Berry Street

Little Rock, AR 72205

www.acmegeo.com

Drilling Company

CADE Drilling rig #21

Comments

Lithologies and tops at drilled depths, not corrected to elogs. Where the well bore gas is 100% methane, the C1 line is moved to 85% for graphical purposes only.

ROCK TYPES

Anhy
Bent
Brec
Cht
Clyst
Coal

Congl
Dol
Gyp
Igne
Lmst
Meta

Mrlst
Salt
Shale
Shcol
Shgy
Sltst

Ss
Till
Cyan mrlst
Cyan chk
Grnt wsh

ACCESSORIES

MINERAL

Anhy
Arggrn
Arg
Bent
Bit
Brecfrag
Calc
Carb
Chtdk
Chtlt
Dol
Feldspar
Ferrpel
Ferr
Glau
Gyp
Hvymin
Kaol
Marl

Minxl
Nodule
Phos
Pyr
Salt
Sandy
Silt
Sil
Sulphur
Tuff

FOSSIL

Algae
Amph
Belm
Bioclst
Brach
Bryozoa
Cephal
Coral

Crin
Echin
Fish
Foram
Fossil
Gastro
Oolite
Ostra
Pelec
Pellet
Pisolite
Plant
Strom

STRINGER

Anhy
Shstrg
Bent
Coal
Dol

Gyp
Ls
Mrst
Sltstrg
Ssstrg

TEXTURE

Boundst
Chalky
Cryxln
Earthy
Finexln
Grainst
Lithogr
Microxln
Mudst
Packst
Wackest

OTHER SYMBOLS

POROSITY TYPE

Earthy
Fenest
Fracture
Inter
Moldic
Organic
Pinpoint
Vuggy

SORTING

Well
Moderate
Poor

ROUNDING

Rounded
Subrnd
Subang
Angular

OIL SHOWS

Good
Fair
Poor
Dead

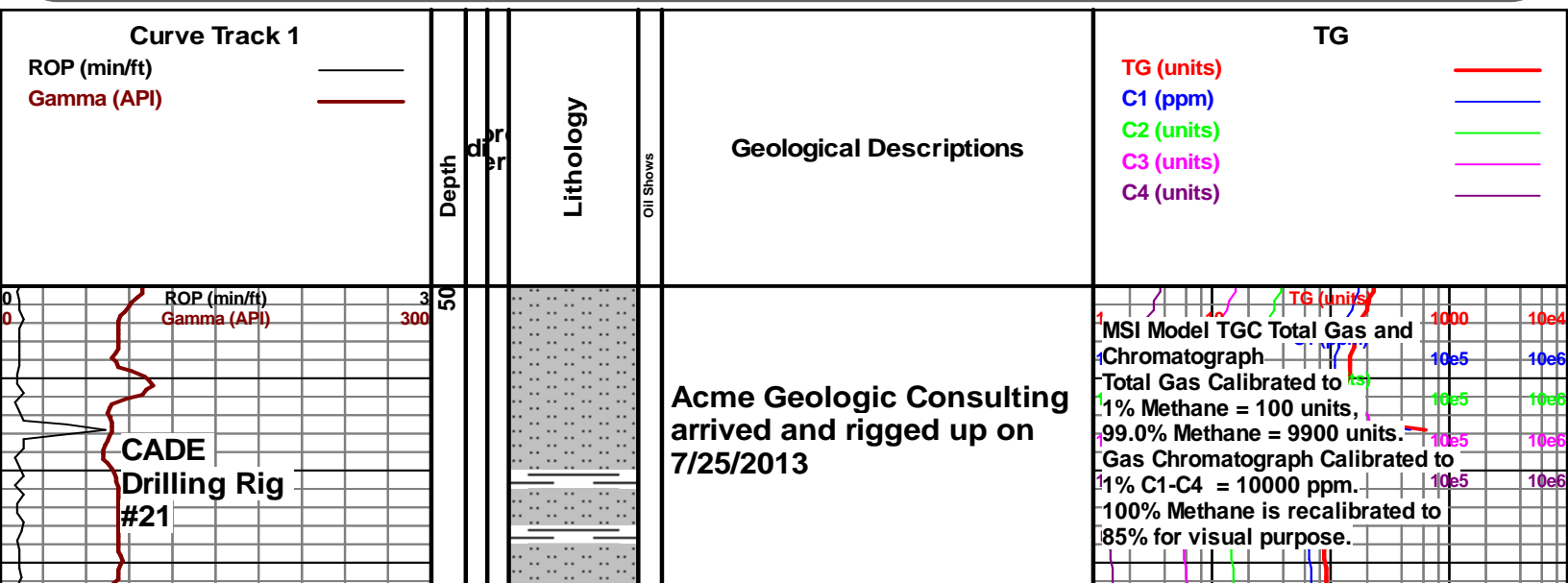
INTERVALS

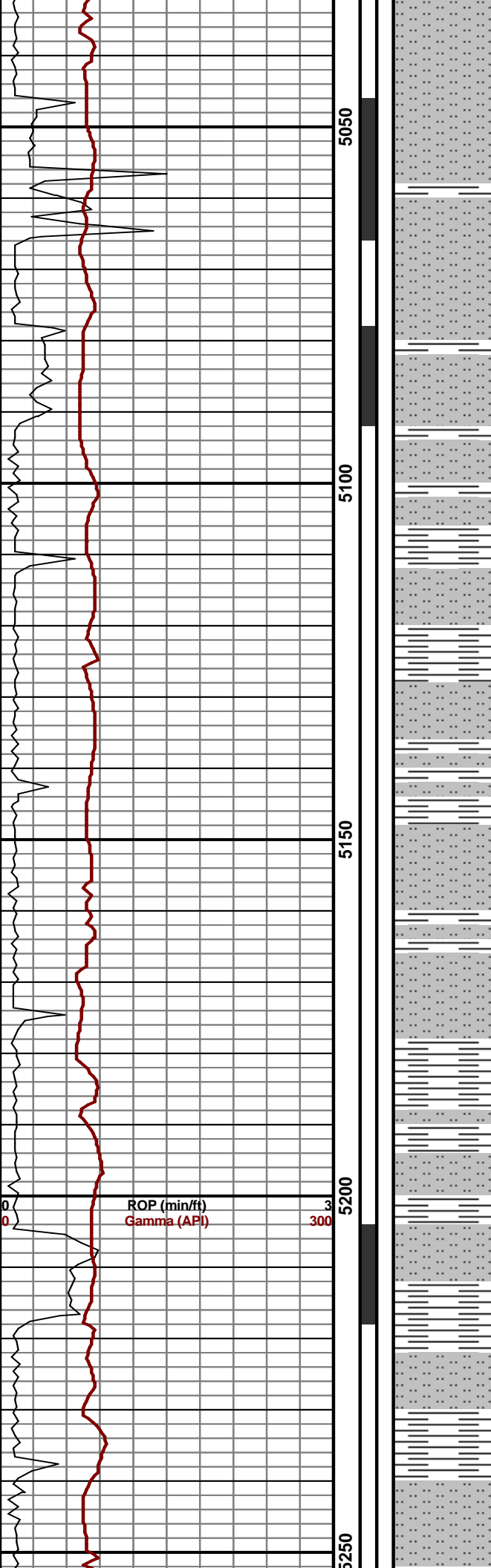
Core
Dst
Srfcsg

Cv-v
Cv-c
Conductor

EVENTS

Rft
Sidewall
Srfcsg

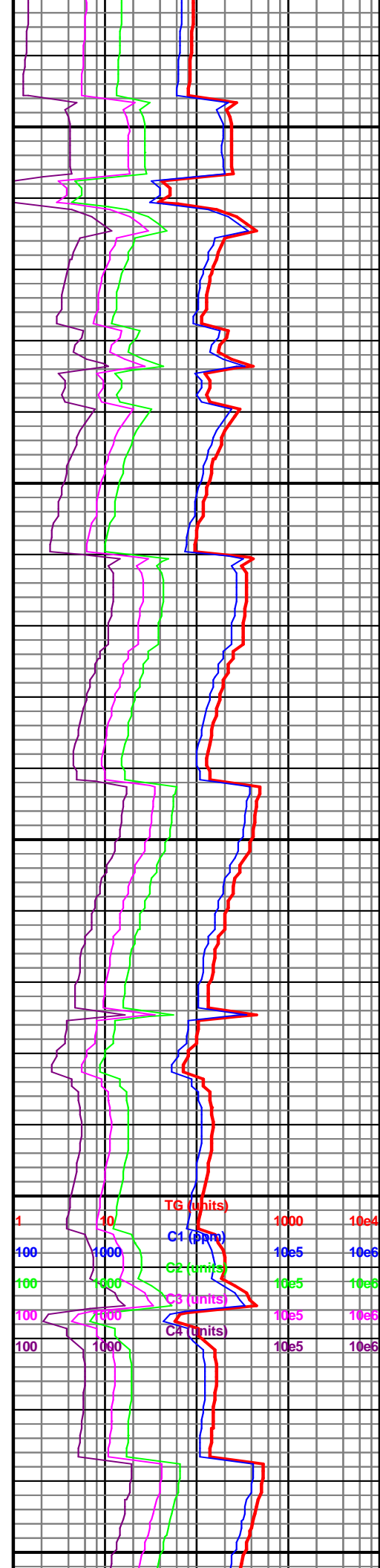


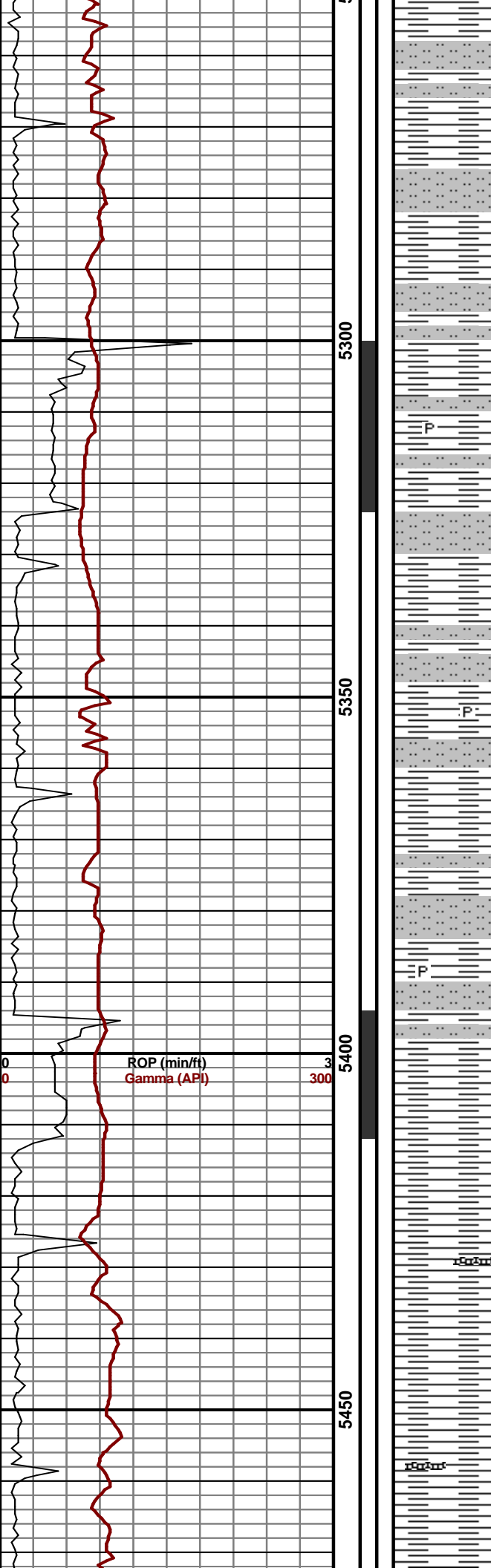


5000-5100 Slstst med gy, sb blkyl-pty,
frm-sl sft, non calc, tr lt gy bent, tr dk
gy sh, nsfoc 90% slstst, 10% sh

5100-5200 Sh med-dk gy, sb blkyl-sb
pty, frm, slty, non calc, abnt slstst cont
a/a, 60% sh, 40% slstst

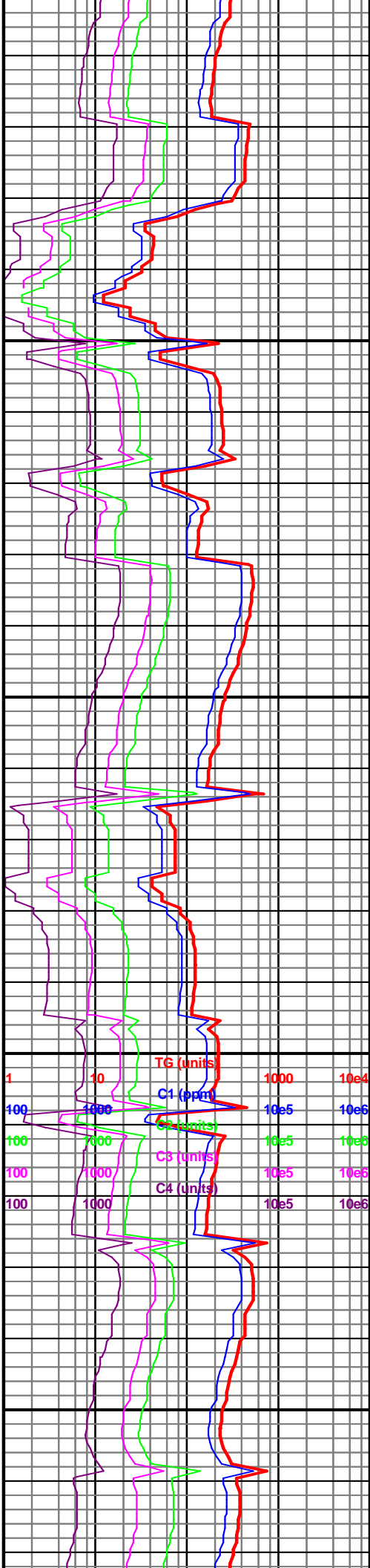
5200-5300 Slstst med-dk gy, v arg, grdg
to slty sh, non calc, sb blkyl-sb pty,
frm of nsfoc 60% slstst, 40% sh



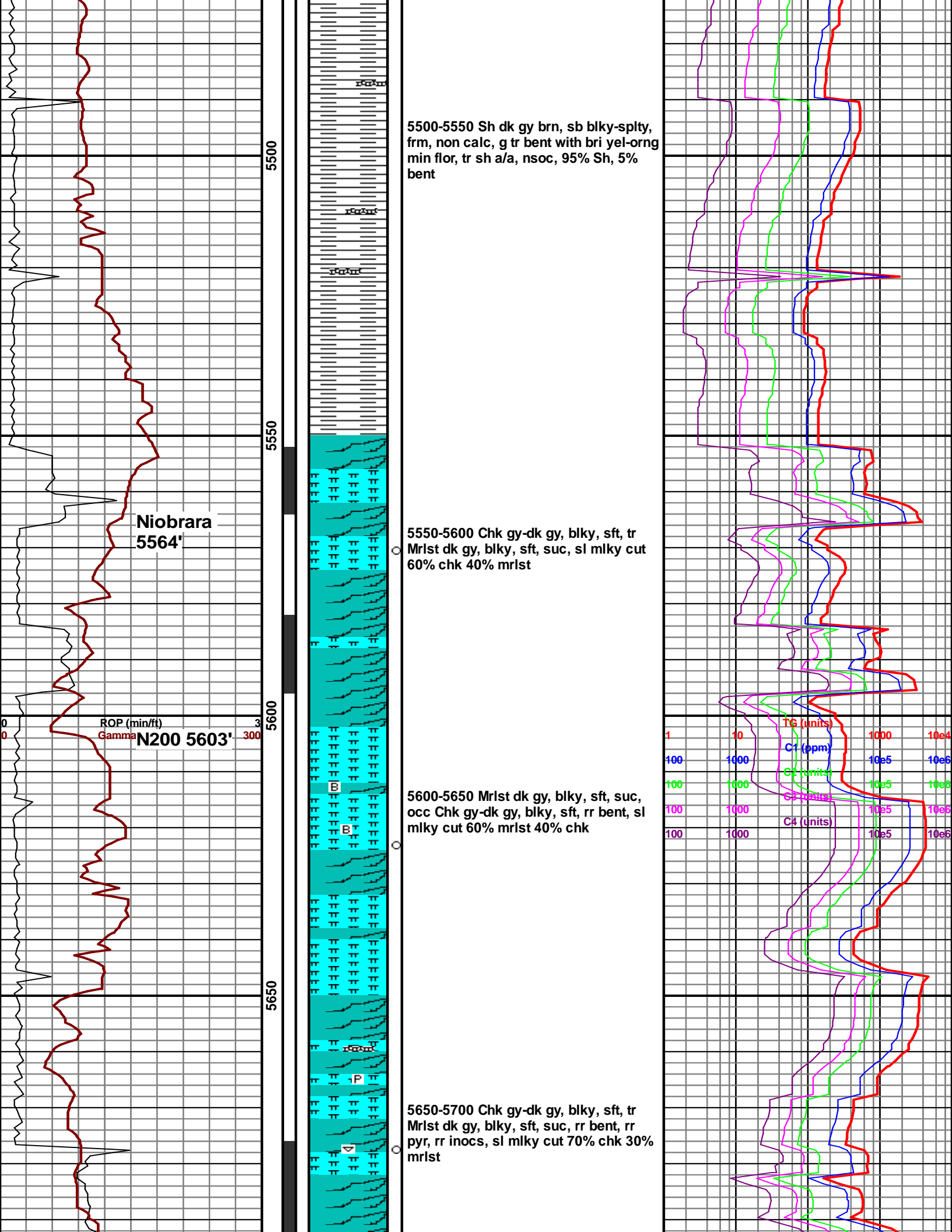


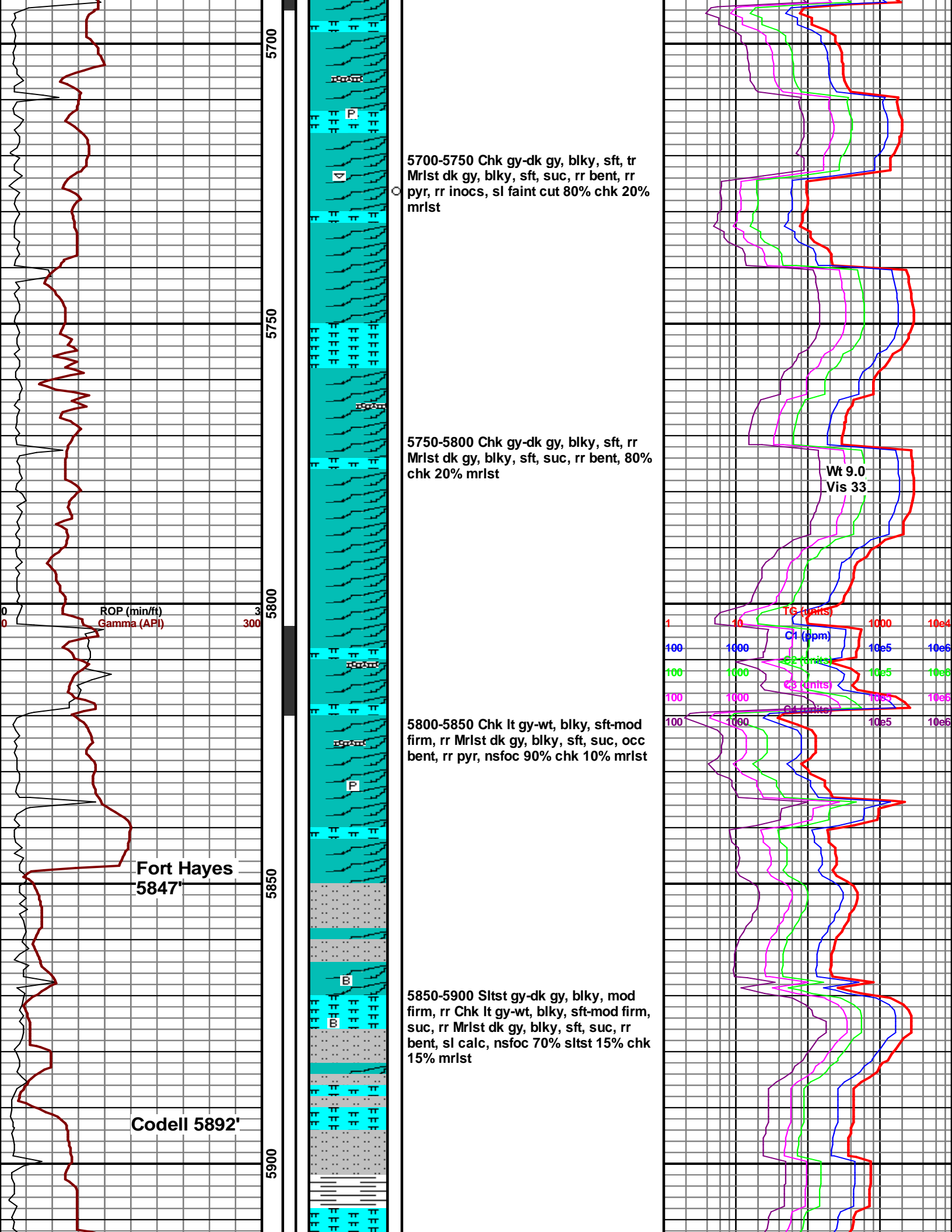
frm-slt, nsroc, 60% sltst 40% sh

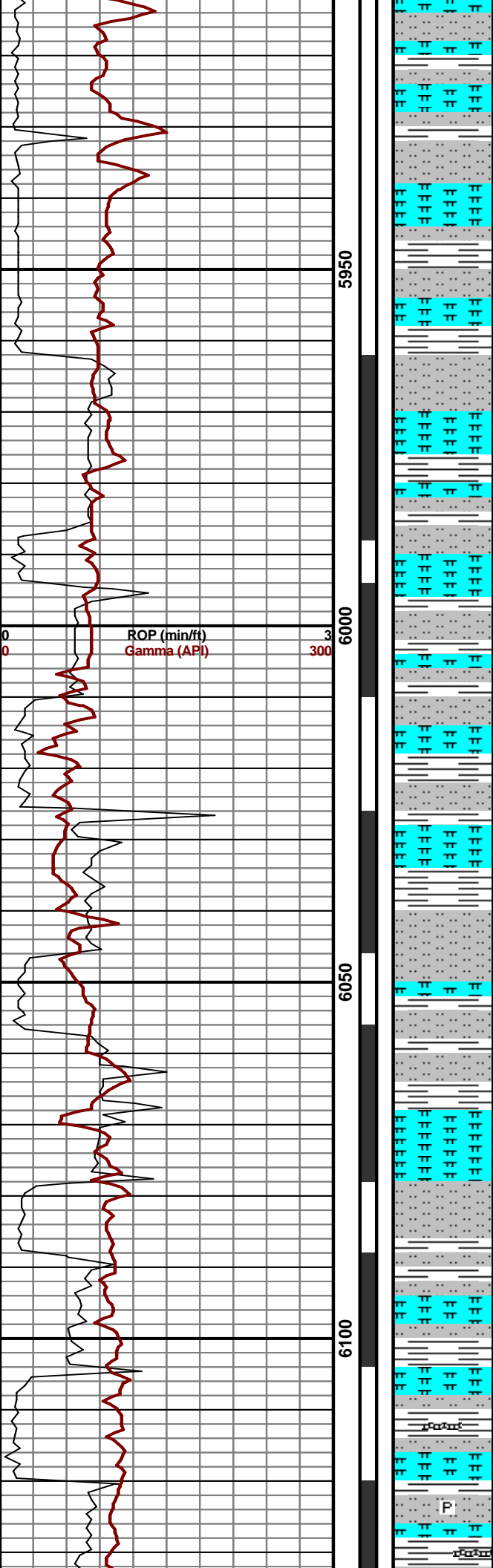
5300-5400 Sh med-dk gy, slty ip, non calc, grdg to sltst ip, rr pyr lams, nsfoc 80% sh, 20% sltst



5400-5500 Sh dk gy brn, sb blk-y-splty, frm, non calc, g tr bent with bri yel-orng min flor, tr sh a/a, nsoc, 95% Sh, 5% bent







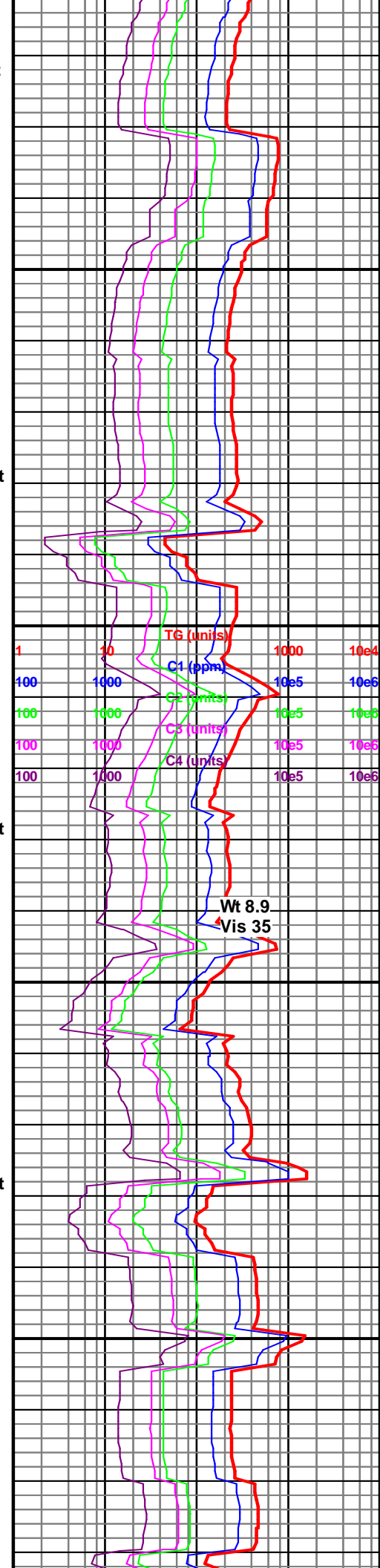
5900-5950 Slstst gy-dk gy, blk, mod
firm, rr Sh dk gy, blk, sft, suc, rr Mrst
dk gy, blk, sft, suc, sl slty, sl calc,
nsfoc 70% sltst 15% sh 15% mrlst

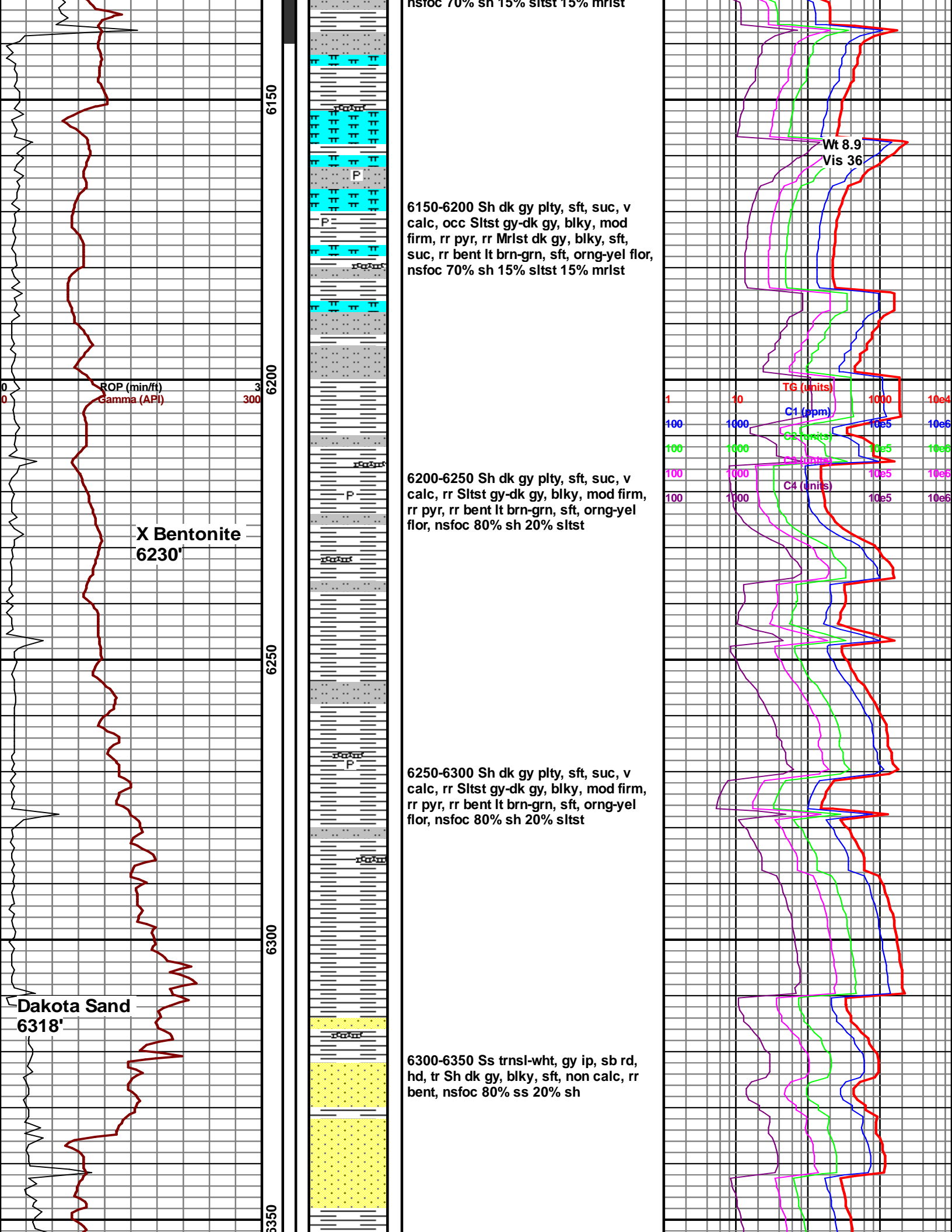
5950-6000 Slstst gy-dk gy, blk, mod
firm, occ Sh dk gy, blk, sft, suc, sl
slty, sl calc, rr Mrst dk gy, blk, sft,
suc, nsfoc 70% sltst 20% sh 10% mrlst

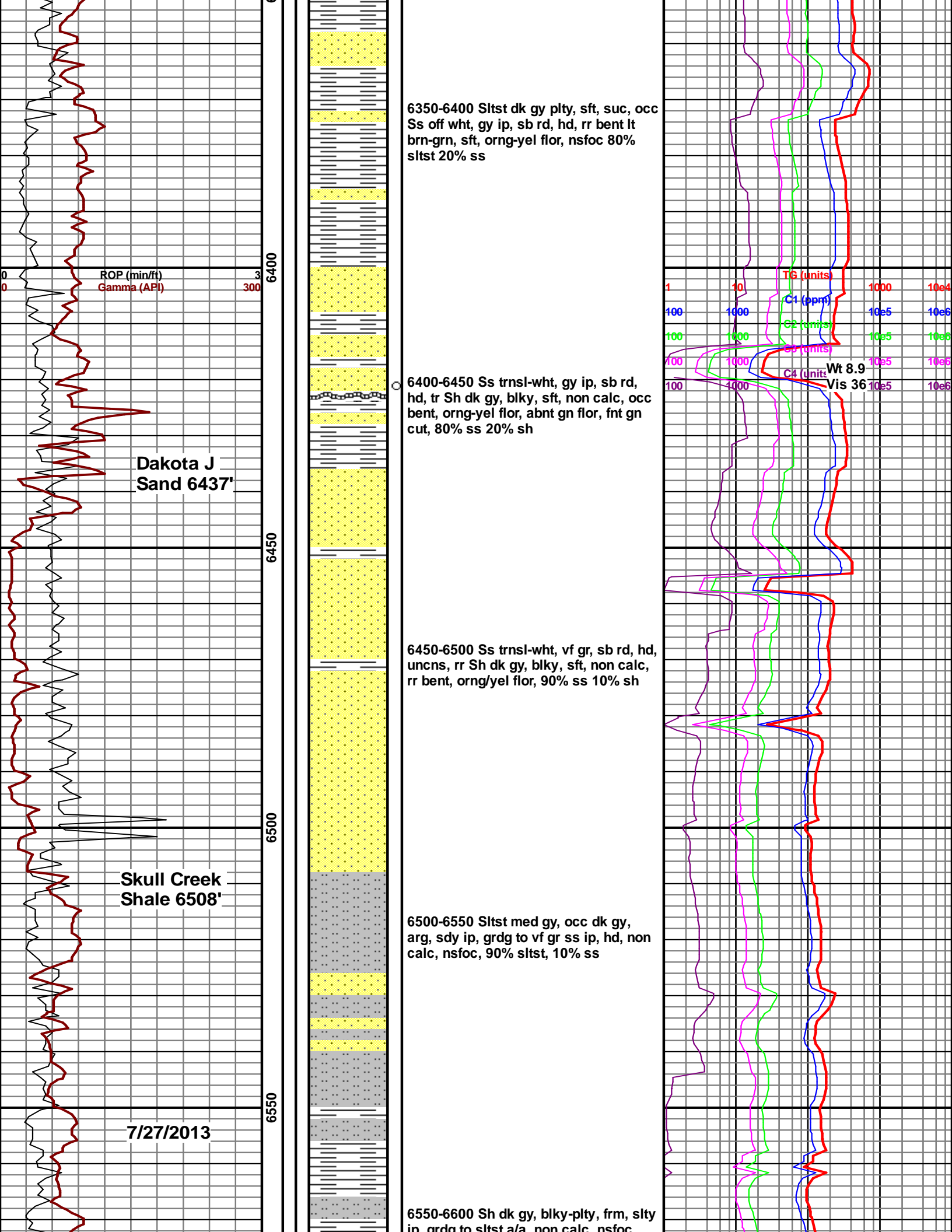
6000-6050 Slstst gy-dk gy, blk, mod
firm, occ Sh dk gy, blk, sft, suc, sl
slty, v calc, rr Mrst dk gy, blk, sft,
suc, nsfoc 70% sltst 15% sh 15% mrlst

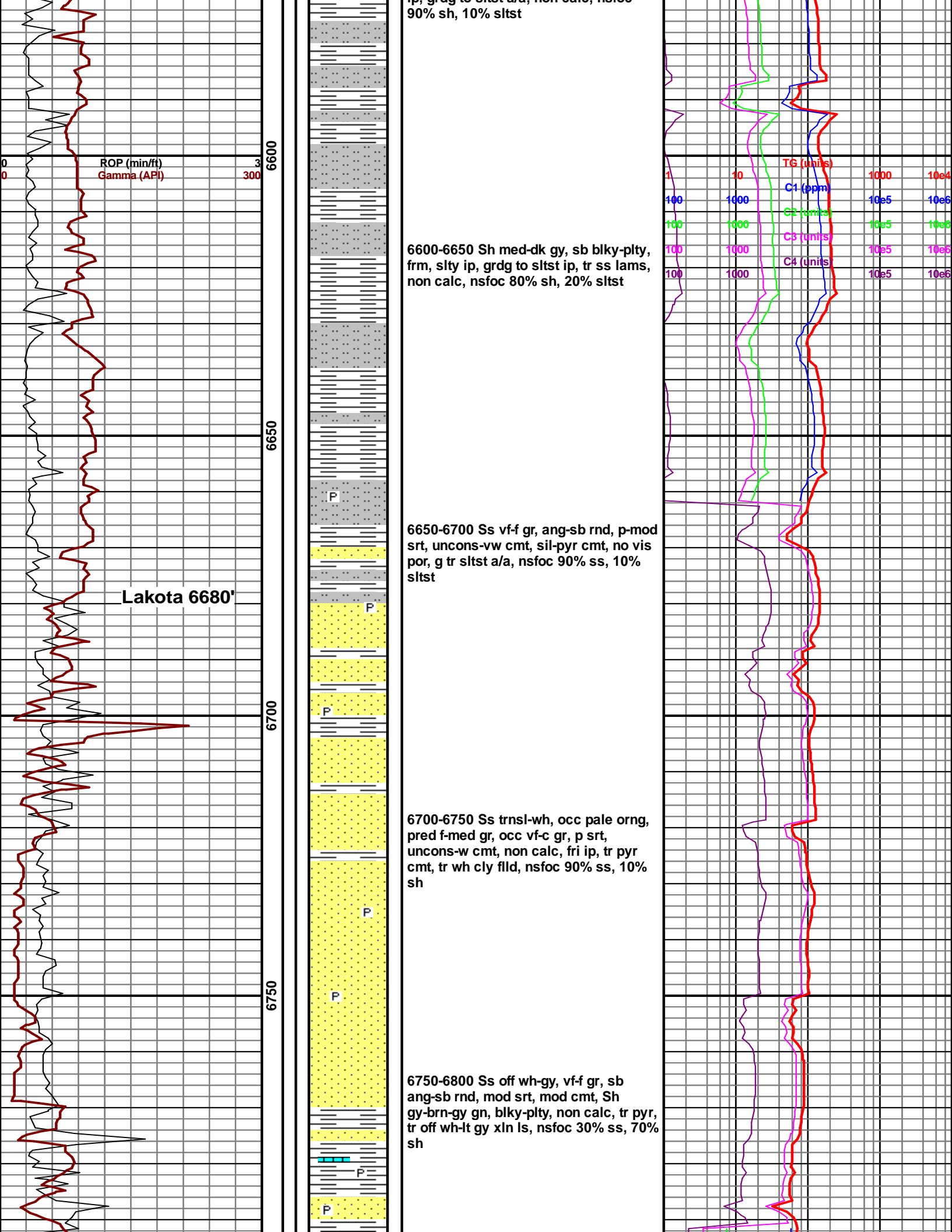
6050-6100 Slstst gy-dk gy, blk, mod
firm, occ Sh dk gy, blk, sft, suc, sl
slty, v calc, rr Mrst dk gy, blk, sft,
suc, nsfoc 70% sltst 15% sh 15% mrlst

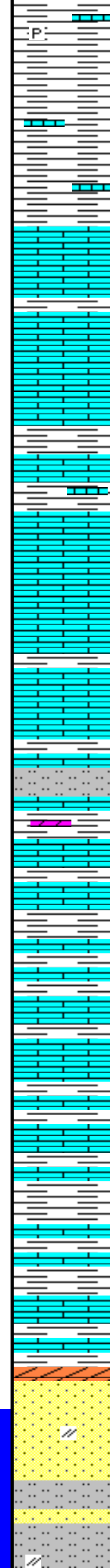
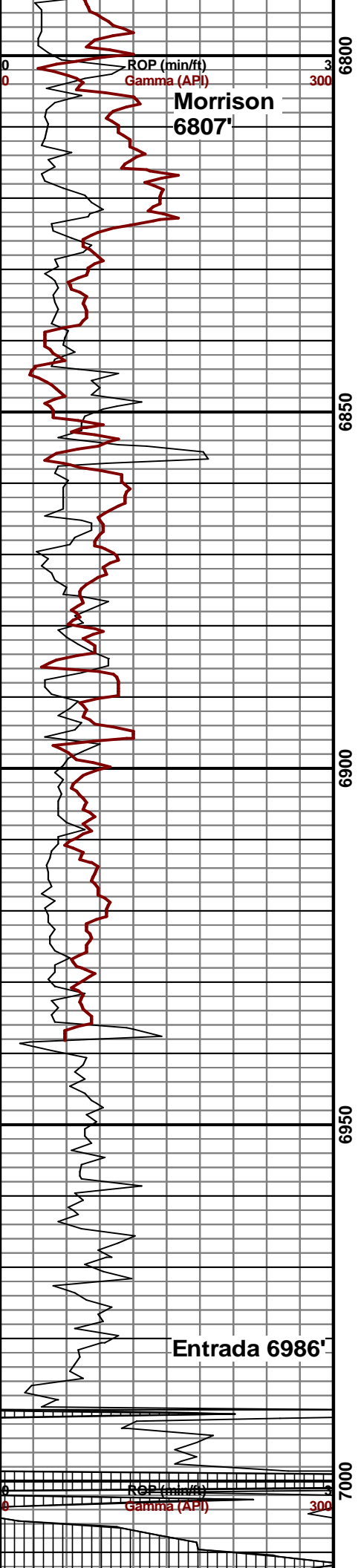
6100-6150 Sh dk gy plty, sft, suc, v
calc, occ Slstst gy-dk gy, blk, mod
firm, rr pyr, rr Mrst dk gy, blk, sft,
suc, rr bent lt brn-grn, sft, orng-yel flor,
nsfoc 70% sh 15% sltst 15% mrlst











6800-6850 Ls tan-brn-off wh, occ gy, hd, microIn, pred cln, occ gy gn sh, occ gy sltst, rr vf gr ss, no vis por, tr dull orng min flor, nsoc 90% ls 10% sh

6850-6900 Ls tan-lt gy-off wh, hd, microIn-vf xln, mottled ip, pred cln, tr sltst & sh a/a, tr dull orng-yel min flor, nsoc 90% ls, 10% sh

6900-6910 Siltst med gy-brn, sb blk-pty, grdg to slty sh ip, abnt ls cont a/a, tr lt gy-tan dol, nsfoc

6910-6920 Sh med gy gn-tan-off wh, sl calc, occ ls, tr sltst a/a,

6920-6930 Ls off wh-tan, blk, frm, arg, grdg to calc sltst ip, abnt slty sh, no vis por, nsfoc

6930-6940 Ls off wh-tan, blk, frm, arg, vf xln, grdg to calc sltst ip, abnt slty sh, no vis por, nsfoc

6940-6950 Ls tan-off wh-med gy, hd, mod-sl arg, mottled, oo ip, micro-crpxln, nsfoc

6950-6960 Ls off wh-lt gy-tan, sb blk-pty, frm-hd, arg ip, abnt lt gy-off wh sh, calc, tr pyr, rr wh-trnsl chrt, nsfoc

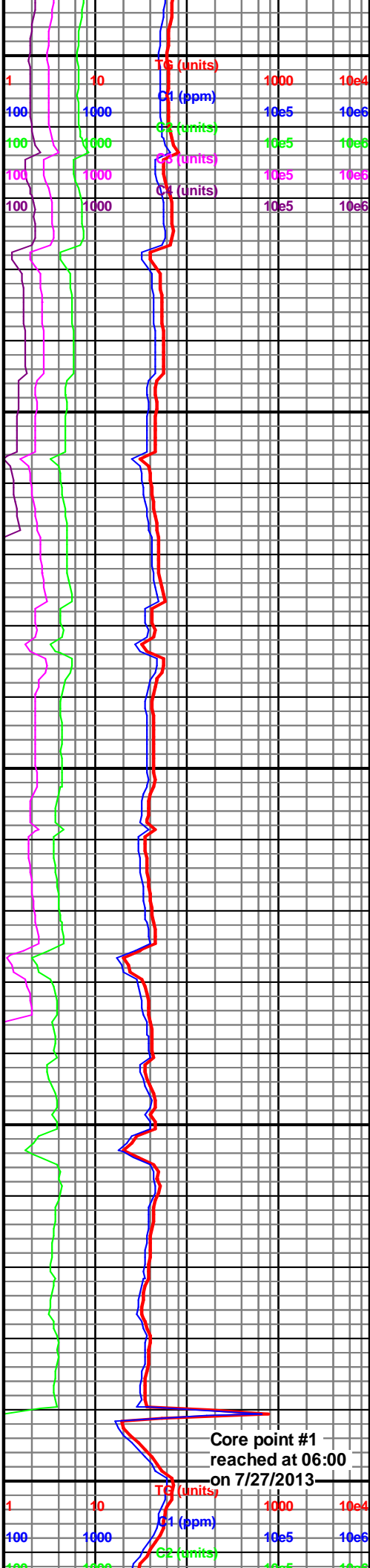
6960-6970 Sh lt gy-off wh sh, calc, tr pyr, sb blk-pty, occ splty, abnt ls cont a/a, nsfoc

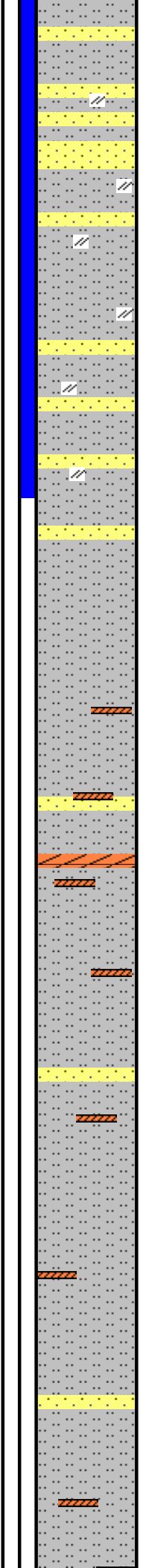
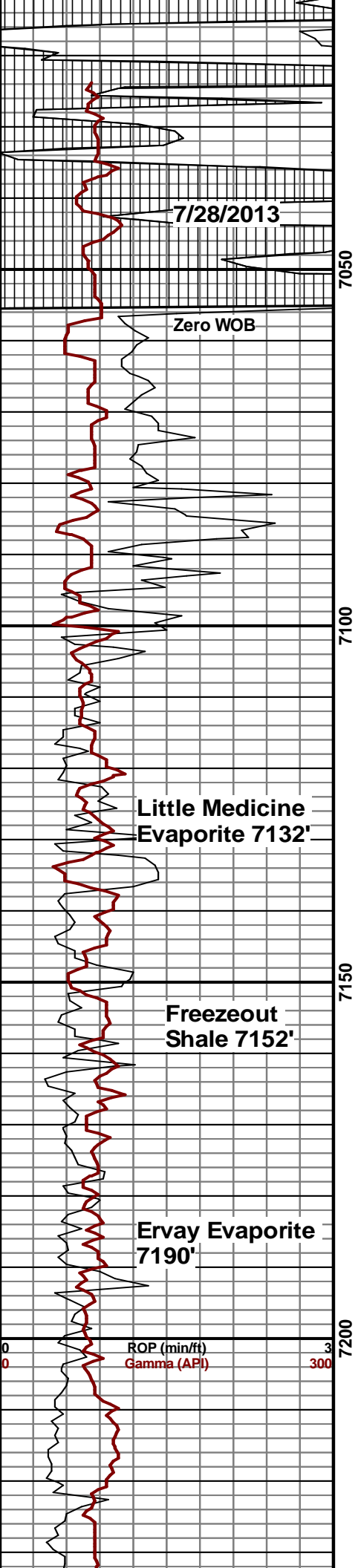
6970-6980 Ls off wh-lt gy-tan, sb blk-pty, frm-hd, arg ip, abnt lt gy-off wh sh, calc, tr pyr, rr wh-trnsl chrt, nsfoc

6980-6990 Ss trnsl-v pale orng, med-vf gr, p srt, rnd-sb ang, pred f-med gr rnd unconsd, occ p cmt, g tr off wh chky anhyd, nsfoc

6990-7000 Ss trnsl-pale orng, med-vf gr, occ c gr, p srt, rnd-sb ang, pred f-med gr rnd unconsd, occ p cmt, nsfoc

7000-7010 Siltst red orng, grdg to vf gr ss, blk-sb blk, non calc, tr anhyd, abnt f-med gr rnd unconsd, nsfoc





7010-7020 Siltst red orng-brick, grdg to vf gr ss, blkly-sb blkly, non calc, abnt f-med gr rnd unconcs sd, nsfoc

7020-7030 Siltst red-orng-brick, sb blkly-plty, frm, g tr vf gr ss a/a, occ red brn-gy sh, anhydrite ip, non calc, nsfoc

7030-7040 Siltst red orng, grdg to vf gr ss, blkly-sb blkly, non calc, tr anhyd, abnt f-med gr rnd unconcs sd, nsfoc

7040-7050 Siltst red orng, grdg to vf gr ss, blkly-sb blkly, non calc, tr anhyd, occ f-med gr rnd unconcs sd, nsfoc

7050-7060 Siltst brick-red orng, sdy ip, sb blkly-blky, arg, grdg to vf gr ss ip, anhyd, non calc, nsfoc

7060-7070 Siltst brick-red orng, sb blkly-sb plty, frm-sl fria, non calc, anhyd, occ vf gr ss, nsfoc

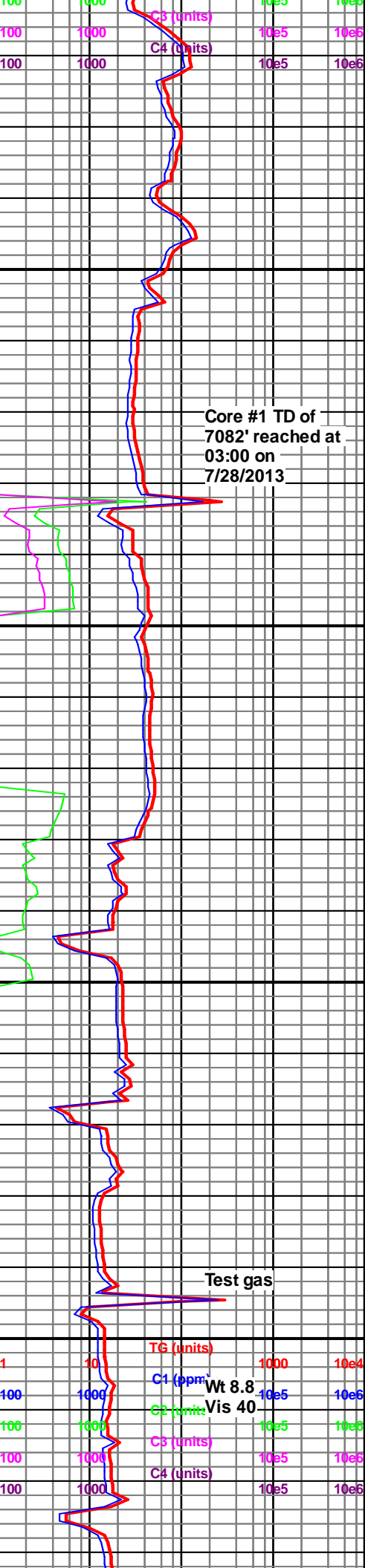
7070-7080 Siltst brick, sb blkly-blky, frm, non calc, anhyd, tr dk gy siltst, tr vf gr ss, nsfoc

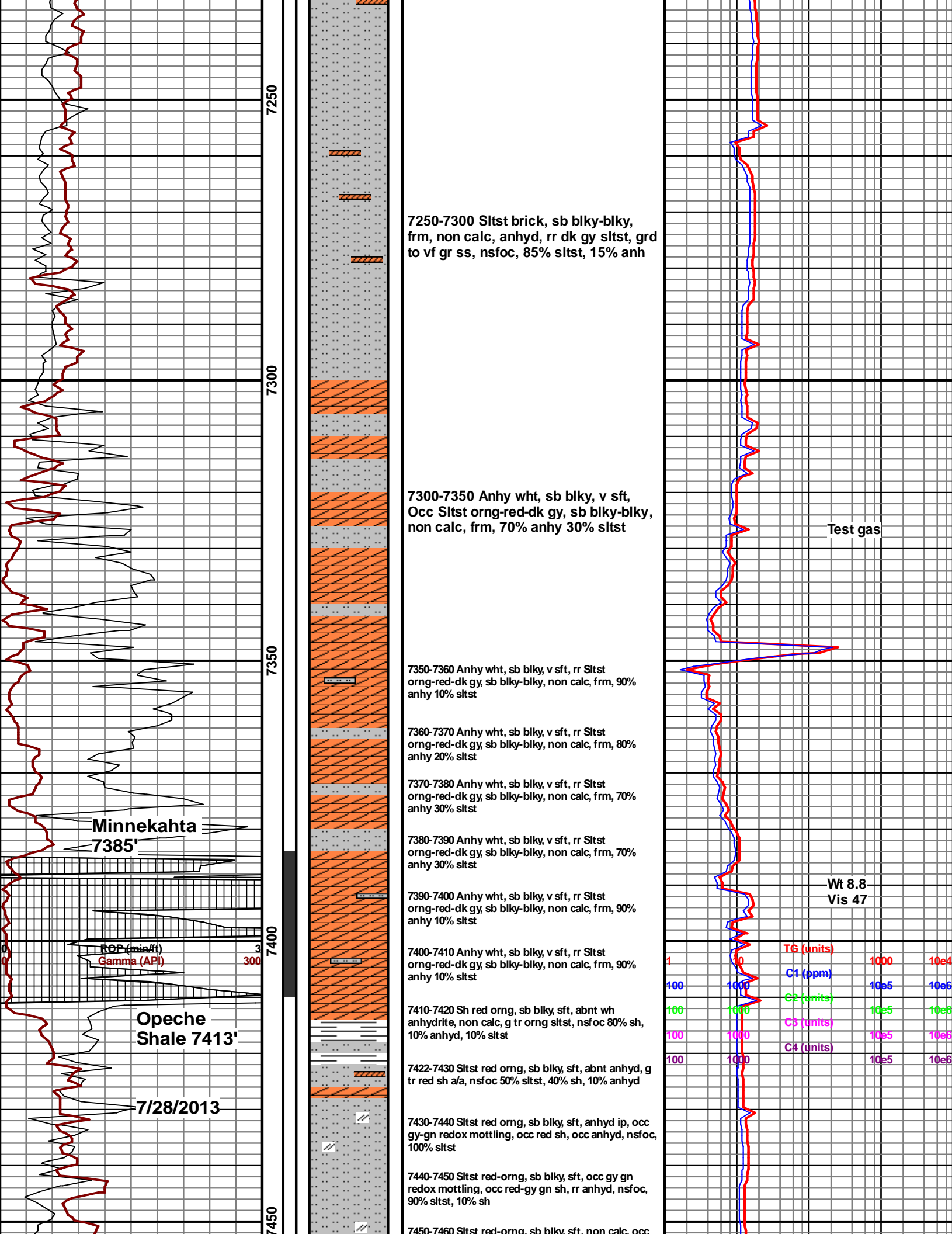
7080-7100 Siltst brick, sb blkly-blky, frm, non calc, anhyd, tr dk gy siltst, tr vf gr ss, nsfoc, 90% siltst, 10% anh

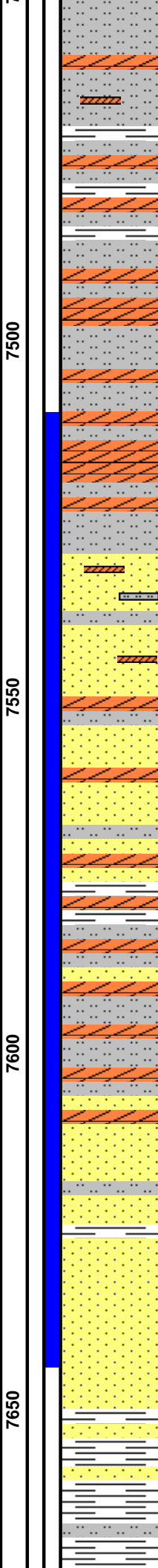
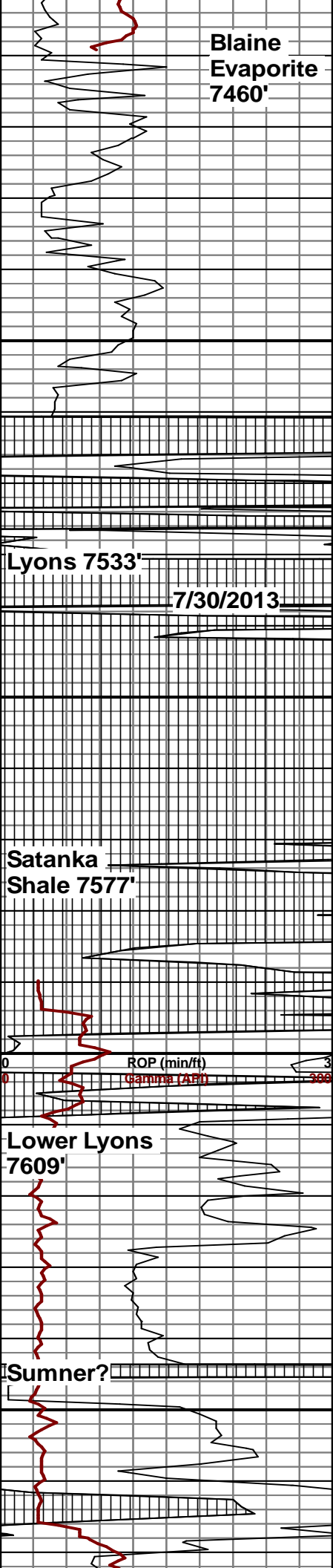
7100-7150 Siltst brick, sb blkly-blky, frm, non calc, anhyd, rr dk gy siltst, grd to vf gr ss, nsfoc, 90% siltst, 10% anh

7150-7200 Siltst brick, sb blkly-blky, frm, non calc, anhyd, rr dk gy siltst, grd to vf gr ss, nsfoc, 90% siltst, 10% anh

7200-7250 Siltst brick, sb blkly-blky, frm, non calc, anhyd, rr dk gy siltst, grd to vf gr ss, nsfoc, 90% siltst, 10% anh







gy gn sh, rr anhyd, nsfoc 90% sltst 10% sh

7460-7470 Siltst red orng, sb blkly-blky, sft, non calc, abnt wh anhyd, sb blkly, sft, cln, nsfoc 90% sltst, 10% anhyd

7470-7480 Siltst red orng, sb blkly-blky, sft, non calc, abnt wh anhyd, g tr red orng sh, nsfoc 80% sltst, 10% anhyd, 10% sh

7480-7490 Siltst red orng, sb blkly-blky, sft, non calc, abnt wh anhyd, g tr red orng sh, nsfoc 80% sltst, 10% anhyd, 10% sh

7490-7500 Siltst red-orng, sb blkly-blky, sft, non calc, abnt wh anhyd, occ red-gn sh, nsfoc 60% sltst 40% anhyd

7500-7510 Siltst red orng, sb blkly-blky, sft, non calc, abnt wh anhyd, g tr red orng sh, nsfoc 80% sltst, 20% anhyd

7510-7520 Anhy wht-orng, sb blkly, v sft, rr Siltst orng-red-dk gy, sb blkly-blky, non calc, frm, 70% anhy 30% sltst

7520-7530 Siltst red orng, sb blkly-blky, sft, non calc, abnt wh anhyd, g tr red orng sh, nsfoc 80% sltst, 20% anhyd

7530-7540 Ss off wht trnsl pale orng, f gr, rnd, w srt, mod cmt, non calc, rr Siltst orng-dk gy, sb blkly, arg, rr anhy wht, nsfoc 80% ss 10% sltst 10% anh

7540-7550 Ss off wht trnsl pale orng, f gr, rnd, w srt, mod cmt, non calc, rr Siltst orng-dk gy, sb blkly, arg, rr anhy wht, nsfoc 60% ss 30% sltst 10% anh

7550-7560 Ss off wht trnsl pale orng, f gr, rnd, w srt, mod cmt, non calc, rr Siltst orng-dk gy, sb blkly, arg, rr anhy wht, nsfoc 60% ss 20% sltst 20% anh

7560-7570 Ss off wht trnsl pale orng, f gr, rnd, w srt, mod cmt, non calc, rr Siltst orng-dk gy, sb blkly, arg, rr anhy wht, nsfoc 60% ss 20% sltst 20% anh

7570-7580 Sh red-brick, slty, grdg to sltst, non calc, abnt anhyd, tr gy gn, frm-sft, sb blkly-blky, nsfoc 60% sh, 20% sltst 10% anhyd, 10% ss

7580-7590 Siltst orng-med gy, sb blkly, sdy, grdg to vf gr ss ip, g tr sh a/a, tr anhyd, nsfoc 50% sltst 20% sh, 20% ss, 10% anhyd

7590-7600 Siltst red-orng, sft, non calc, abnt anhyd, occ grdg to vf gr ss, nsfoc 80% sltst, 10% sh, 10% anhyd

7600-7610 Anhyd orng, sft, with abnt sltst & sh a/a, g tr uncns vf-f gr rnd sd, 20% anhyd, 40% sltst 30% sh, 10% sd

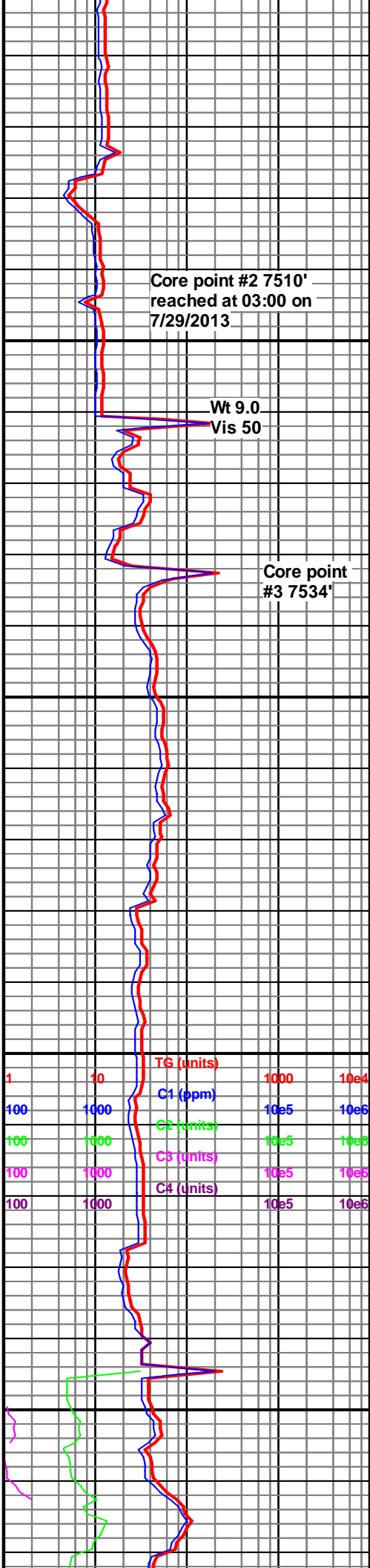
7610-7620 Ss orng, vf-f gr, rnd-sb rnd, w srt, uncns, Fe stn, non calc, abnt anhyd& sltst a/a, nsfoc 80% ss, 20% sltst

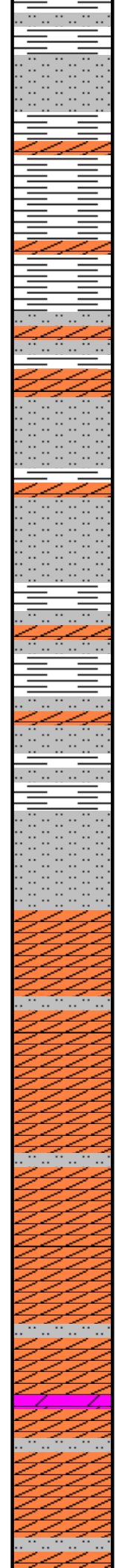
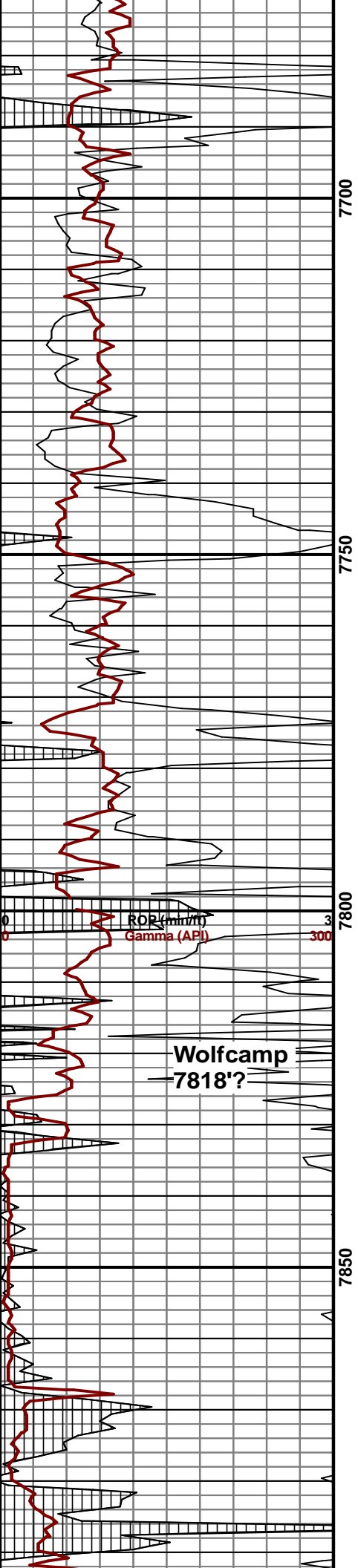
7620-7630 Ss orng, vf-f gr, rnd-sb ang, wsrt, uncon, fri ip, non calc, rr dk gy sltst, g tr sh & anhyd cavings, nsfoc 100% ss

7630-7640 Ss orng, f-vf gr, rnd-sb rnd, w srt, uncns-p cmt, fri ip, pred uncns, non calc, nsfoc 100% ss

7640-7650 Poor sample mostly cavings, Ss orng-red, f-vf gr, rnd-sb rnd, w srt, uncns-p cmt, fri ip, pred uncns, non calc, nsfoc

7650-7700 Sh orng-red, sb blkly-plty, v





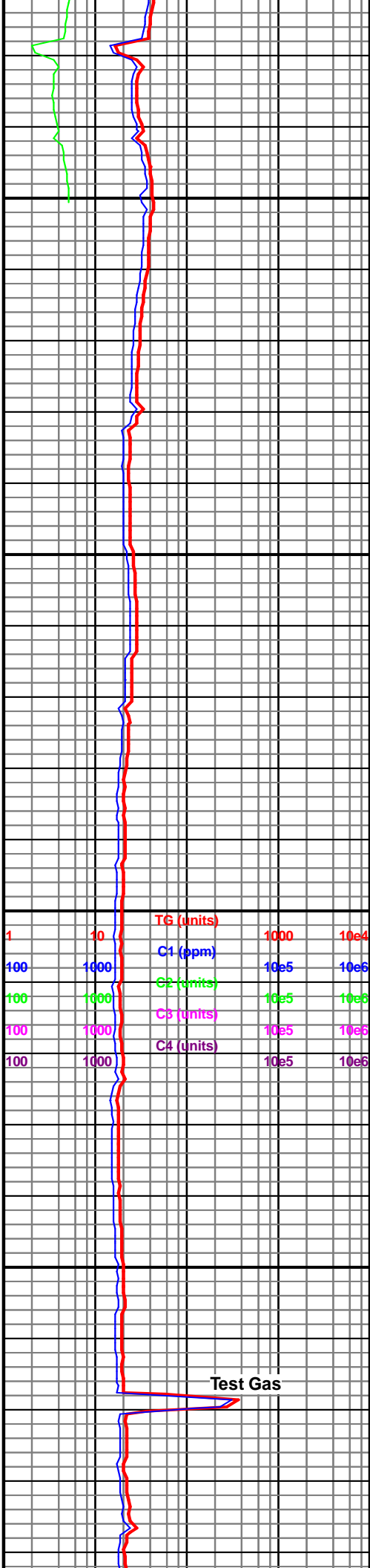
sft, slty ip, rr sltst blkly grdg to sh ip, nsfoc, 60% Sh 40% sltst

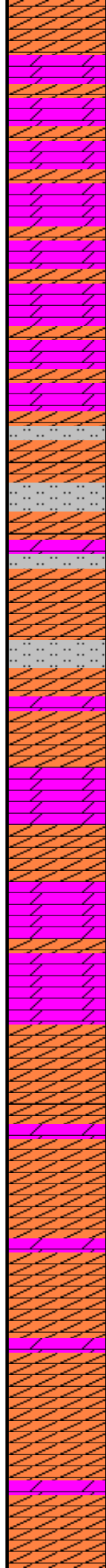
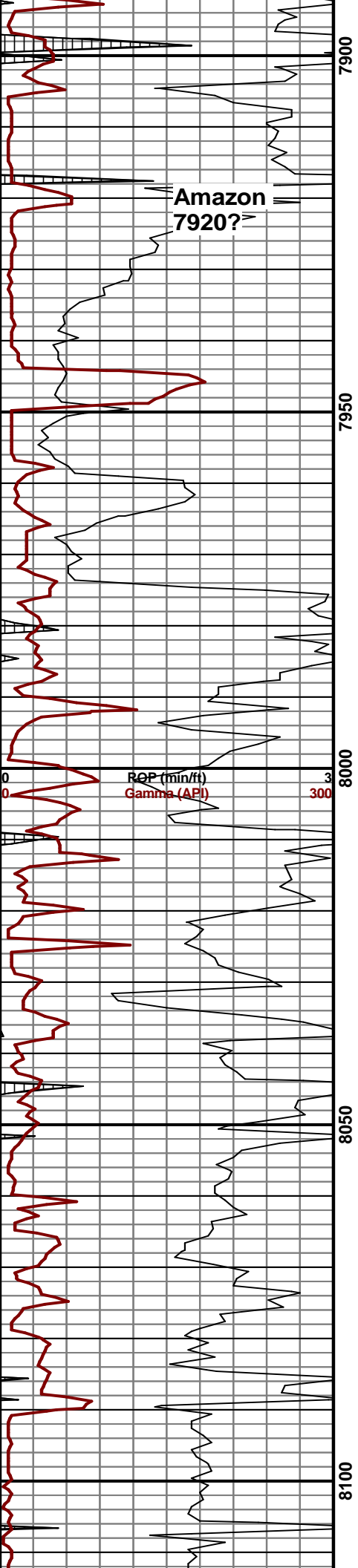
7700-7750 Sh orng-red, sb blkly-plty, v sft, slty ip, abnt sltst blkly grdg to sh ip, rr anhyd, wt, sft, nsfoc, 45% Sh 45% sltst 10% anh

7750-7800 Sh orng-red, sb blkly-plty, v sft, slty ip, abnt sltst blkly grdg to sh ip, rr anhyd, wt, sft, nsfoc, 45% Sh 45% sltst 10% anh

7800-7850 Anhyd wht, sb blkly, v sft, rr orng-red sltst, sb blkly, sft, nsfoc, 95% anhy, 5% sltst

7850-7900 Anhyd wht-pale orng, sb blkly, v sft, tr sltst, orng-red, sb blkly, mod frm, rr dol off wht, suc, nsfoc, 85% anhy, 10% sltst, 5% dol



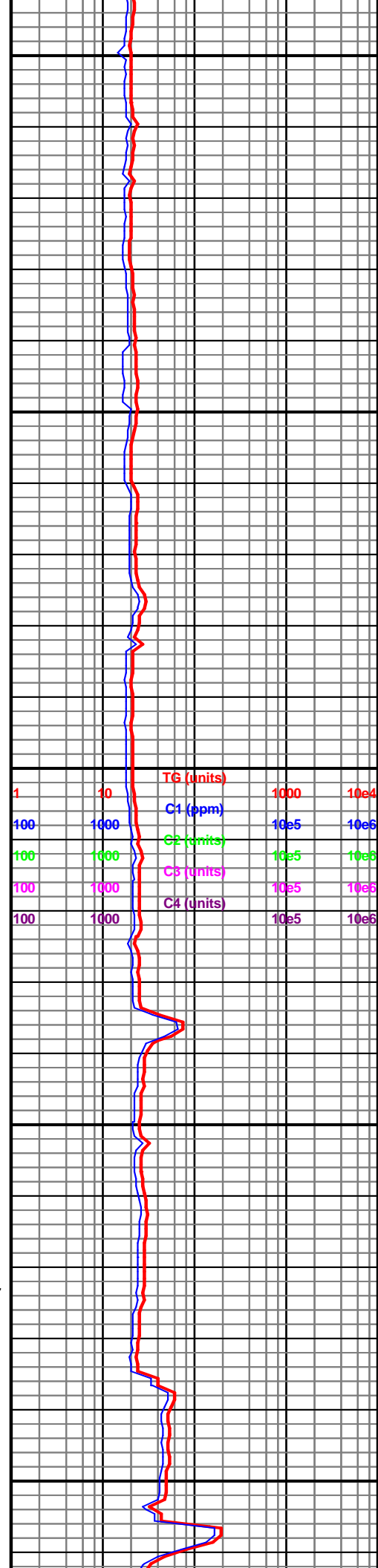


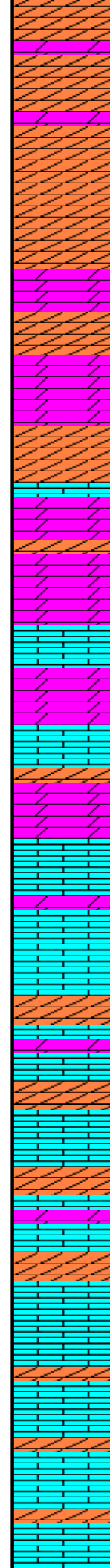
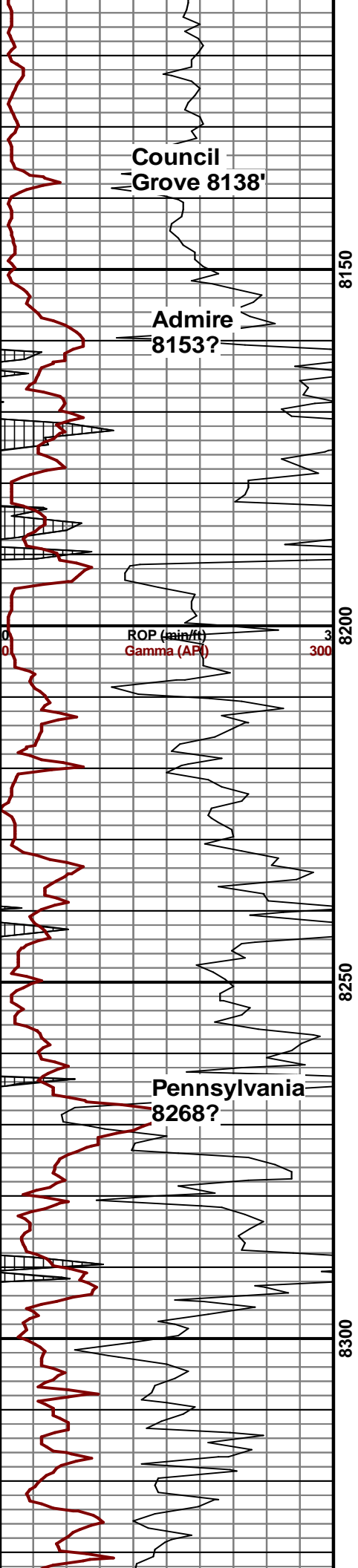
7900-7950 Dol lt gy-tan, suc, frm, sb blky, occ anhyd wht, sb blky, v sft, nsfoc, 65% dol, 35% anhy, good pale yel min flor, nsoc

7950-8000 Anhyd wht, sb blky, v sft, tr sltst, bro-red, sb blky, mod frm, tr dol off wht-tan, suc, nsfoc, 60% anhy, 30% sltst, 10% dol

8000-8050 Anhyd wht, sb blky, v sft, tr dol off wht-tan, suc, nsfoc, 60% anhy, 40% dol

8050-8100 Anhyd wht, sb blky, v sft, rr dol off wht-tan, suc, nsfoc, 90% anhy, 10% dol





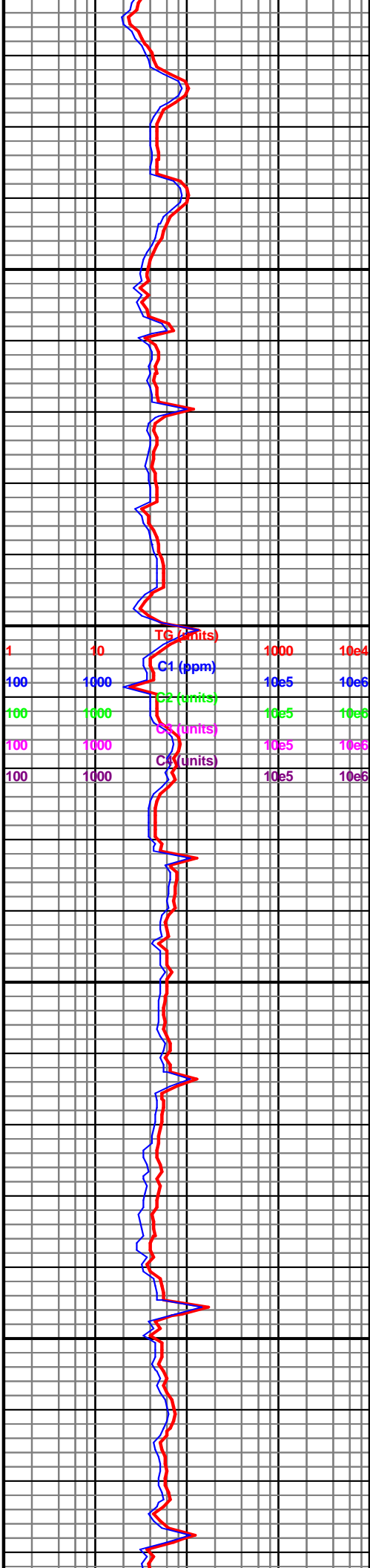
8100-8150 Anhyd wht, sb blk, v sft, rr dol off wht-tan, suc, nsfoc, 90% anhy, 10% dol

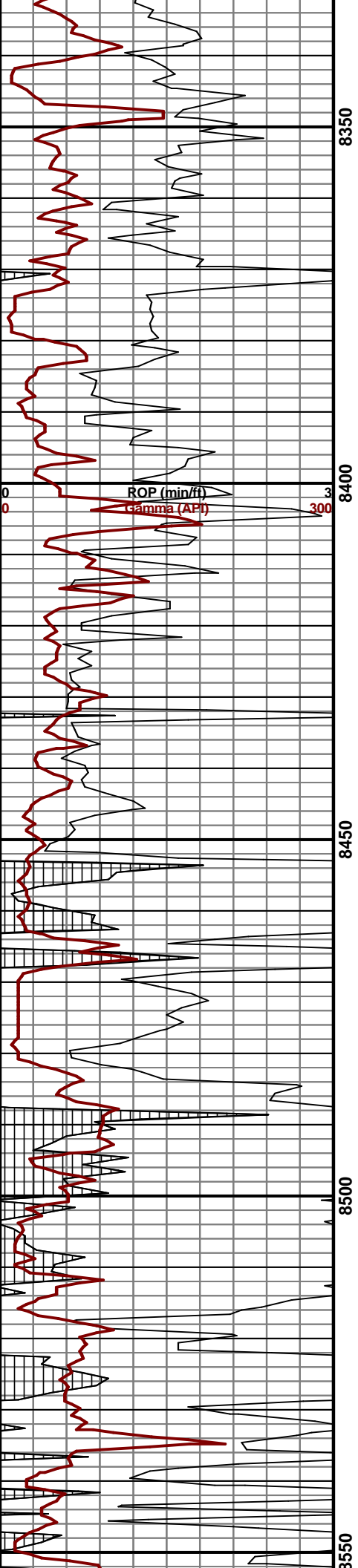
8150-8200 Dol off wh-lt tan, vf suc, cln, abnt anhyd wh, sb blk, v sft, rr lmst grn-gy, sl frm, nsfoc 60% dol, 30% anhy, 10% lmst

8200-8250 Lmst lt brn-gy-lt grn, blk, frm, occ Dol off wh-lt gy-tan, vf suc, cln, rr anhyd a/a, nsoc 70% lmst, 20% dol, 10% anhyd

8250-8300 Lmst lt brn-gy-med gy, blk-mod frm-frm, abnt anhyd wh, sb blk, sft, rr dol tan, vf suc, rr dull yel min flor, nsoc, 60% lmst, 35% anhy, 5% dol

8300-8350 Lmst lt brn-gy-med gy, blk, frm, occ anhyd wh, sb blk, sft, rr dull yel min flor, nsoc, 80% lmst, 20% anhyd



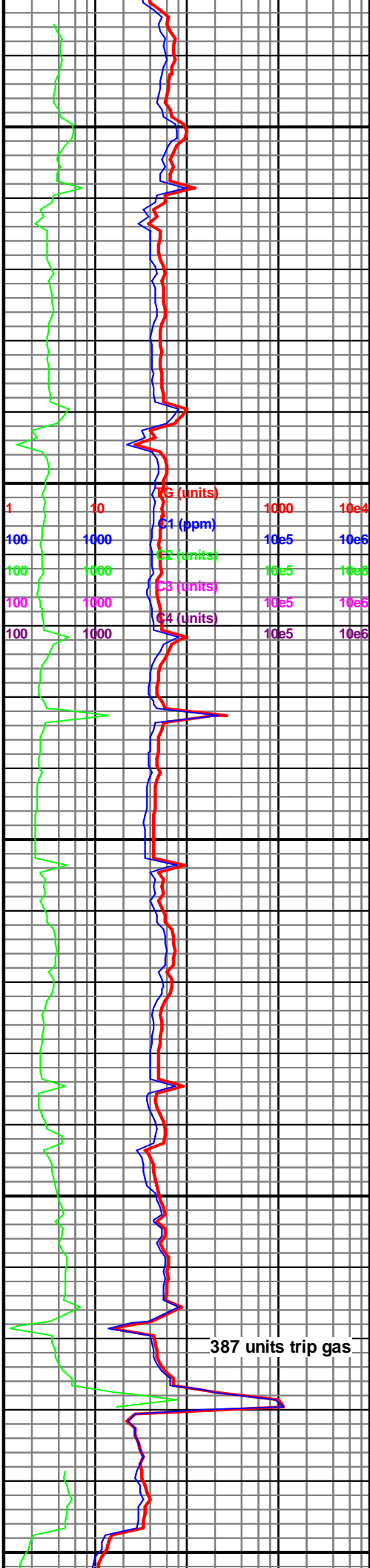


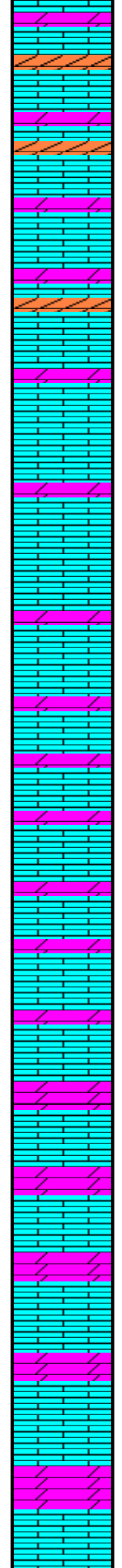
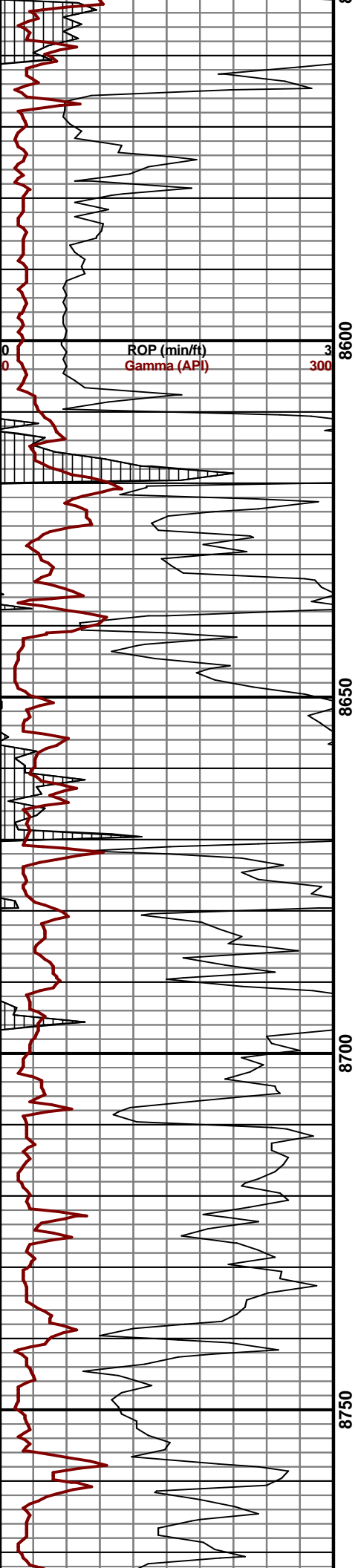
8350-8400 Lmst lt brn-gy, blk, frm,
abnt tan-off wh suc dol, occ wh anhyd
aa, rr pale yel min flr, nsoc, 60% lmst,
30% dol, 10% anhyd

8400-8450 Lmst lt-med gy, blk, frm, tr
anhyd wht, sb blk, sft, nsoc, 95%
lmst, 5% anhyd

8450-8500 Lmst lt-med gy, sft-mod frm,
sb blk-plt, suc ip, nsoc 100% lmst

8500-8550 Lmst tan-lt-med gy, sft-mod
frm, sb blk-blk, g tr dol lt gy-tan, sb
blk-blk, mod frm, vf suc, g tr anhyd
tan-off wht, sft, sb blk, rr pale yel min
flr, nsoc, 75% lmst, 15% dol, 10%
anhyd





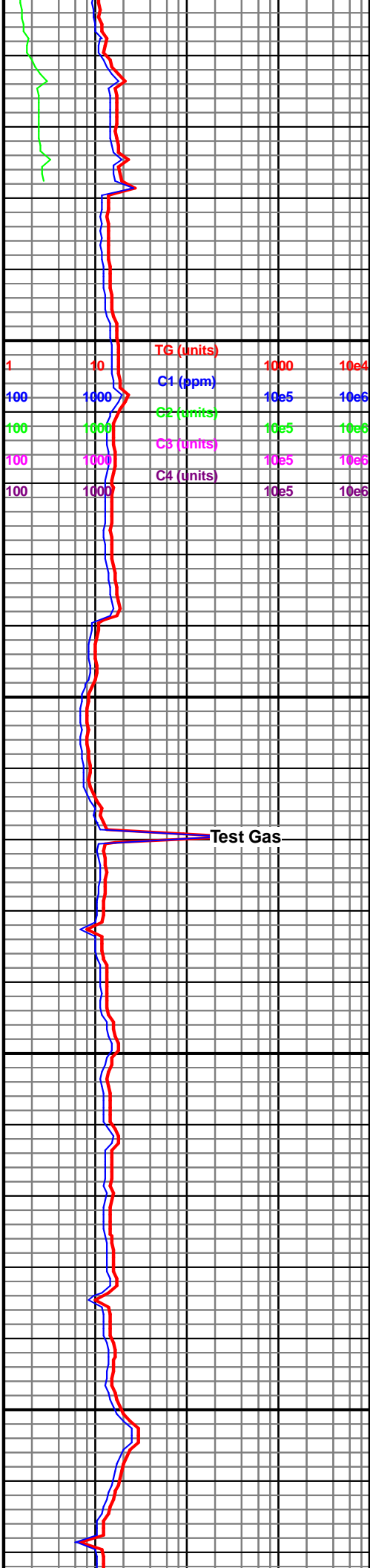
8550-8600 Lmst tan-lt gy-med gy, sft-mod frm, sb blk, g tr lt gy dol aa, tr anhyd aa, nsoc, 75% lmst, 15% dol, 10% anhyd

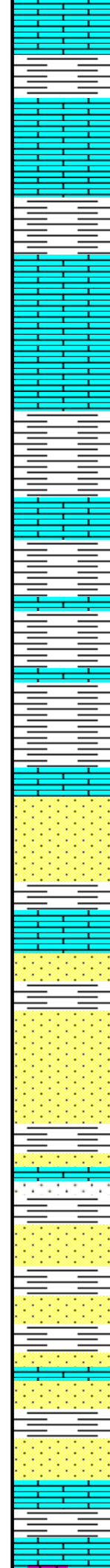
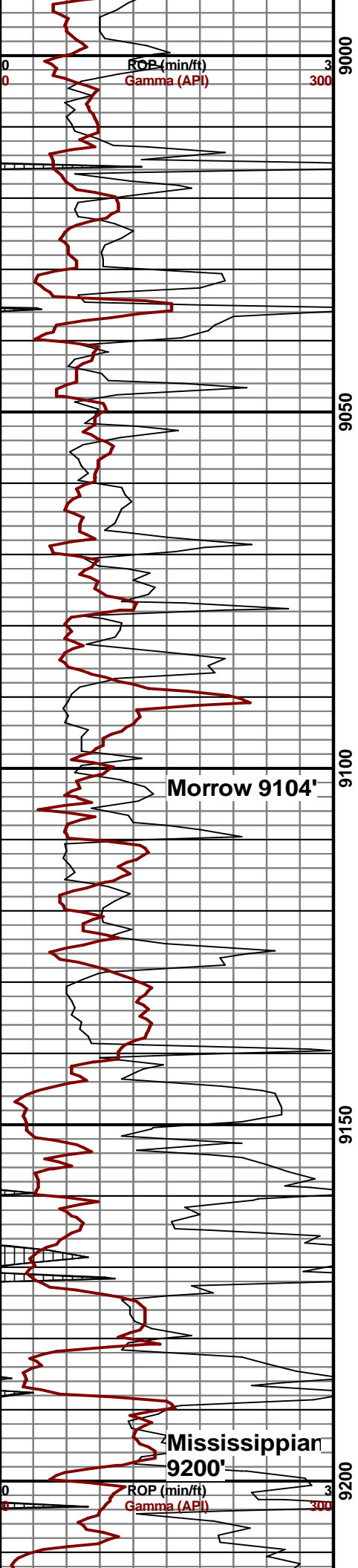
8600-8650 Lmst tan-lt gy-med gy, mod frm-frm, sb blk-blk, dolc ip, tr gy dol, nsoc 90% lmst, 10% dol

8650-8700 Lmst tan-lt gy, mod frm-frm, sb blk-blk, dolc, occ gy dol, nsoc, 75% lmst, 25% dol

8700-8750 Lmst tan-lt gy, sft-mod frm, sb blk, dolc, occ gy dol, tr bri yel min flor, nsoc 70% lmst, 30% dol

8750-8800 Lmst tan-lt gy, sft-mod frm,



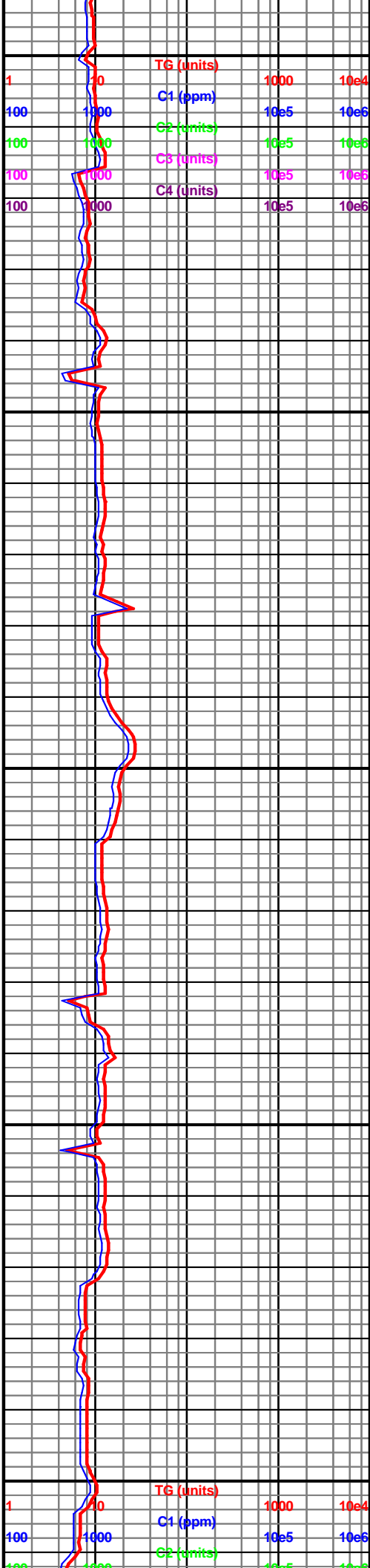


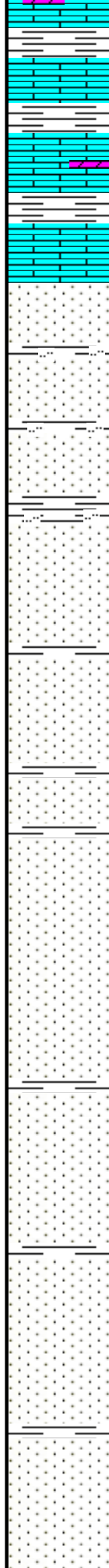
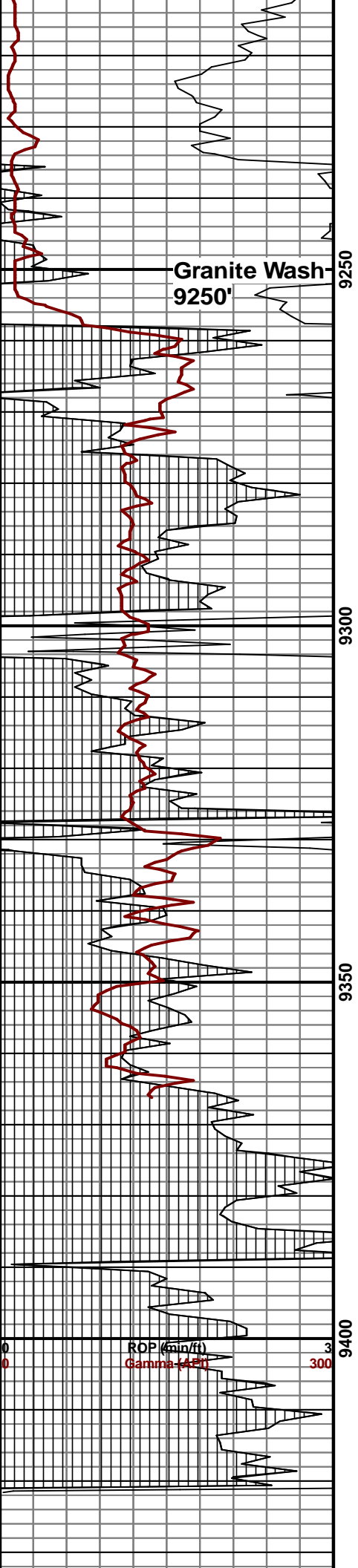
9000-9050 Lmst tan-lt gy-wt, sft-mod frm, sb blk, dolc, occ sh, bro-dk gy, sb plty, sft, slty ip, nsoc 60% lmst, 40% sh

9050-9100 Sh, bro-dk gy, sb plty, sft, slty ip, occ lmst tan-lt gy-wt, sft-mod frm, sb blk, dolc, nsoc 70% sh, 30% lmst

9100-9150 Ss off wt-lt bro, f-med gr, ang-sb ang, p srt, uncon, occ Sh, bro-dk gy, sb plty, sft, slty ip, occ lmst tan-lt gy-wt, sft-mod frm, sb blk, dolc, nsoc, 60% ss 20% sh, 20% lmst

9150-9200 Ss trnsf-off wht-lt brn, f gr, ang-sb ang, p srt. p-uncons, abnt Sh, brn-dk gy-gn, plty-sb plty, mod frm, slty ip, rr lmst aa, nsoc, 50% ss 45% sh, 5% lmst





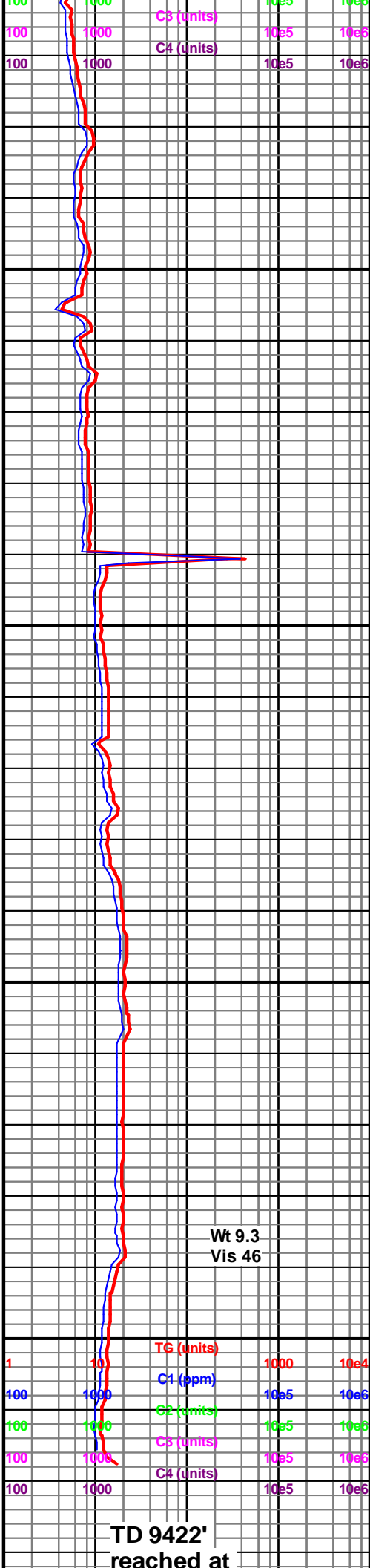
9200-9250 Lmst tan-lt gy, sb blkyl-blky, frm, dolc ip, Sh med gy-lt brn, slty ip, plty-sb blkyl, rr dol off wht, blkyl, mod frm, nsoc, 55% lmst, 40% sh, <5% dol

9250-9300 Ss trnsf-off wh-pink, vf-med gr, sb ang-rnd, p srt, p mt-uncons, tr pink-wht-blk granite pebbles, occ Sh med gy, frm, plty, v slty, nsfoc, 60% ss, 40% sh

9300-9350 Ss trnsf-off wh-pink, vf-med gr, sb ang-rnd, p srt, p mt-uncons, tr pink-wht-blk granite pebbles, occ Sh med gy, frm, plty, v slty, nsfoc, 70% ss, 30% sh

9350-9400 Ss trnsf-off wh-pink, vf-med gr, sb ang-rnd, p srt, p mt-uncons, tr pink-wht-blk granite pebbles, rr Sh med gy, frm, plty, v slty, nsfoc, 80% ss, 20% sh

9400-9422 Ss trnsf-off wh-pink, vf-med gr, sb ang-rnd, p srt, p mt-uncons qrts, tr pink-wht-blk granite pebbles, rr biotite, rr Sh med gy, frm, plty, v slty, nsfoc, 90% ss, 10% sh



18:00 on
8/4/2013