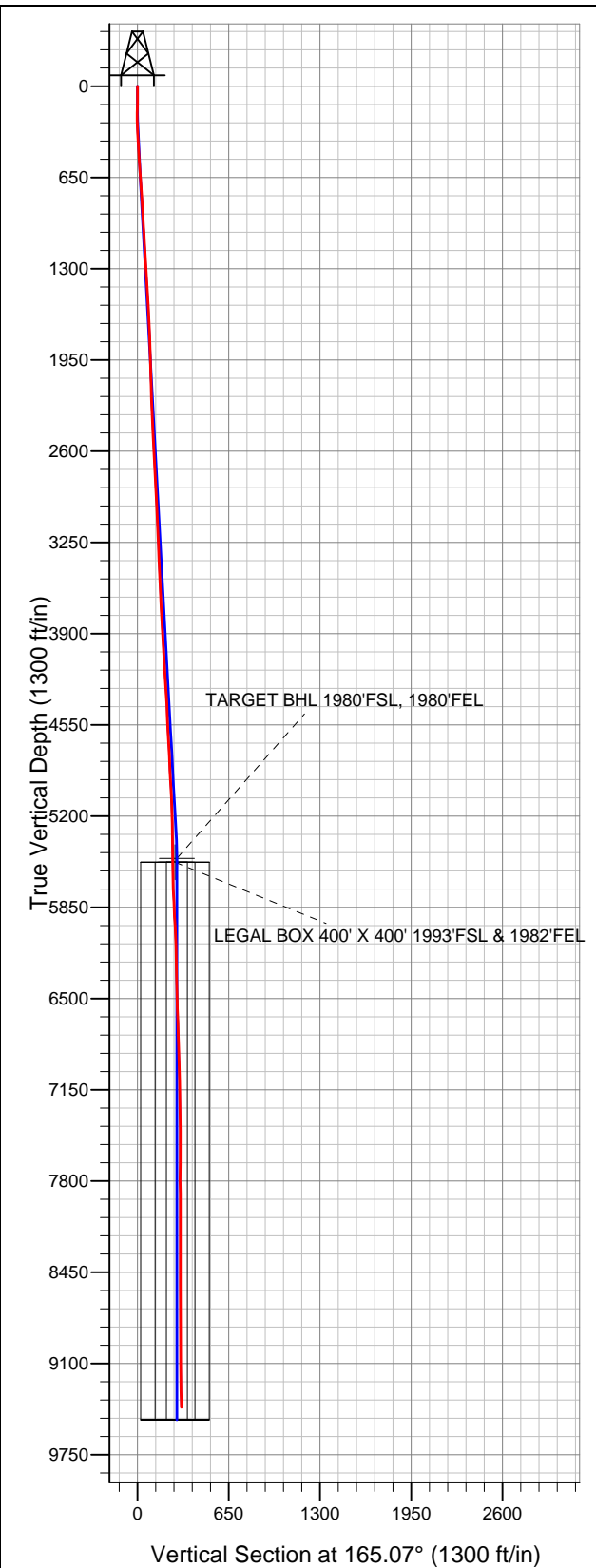
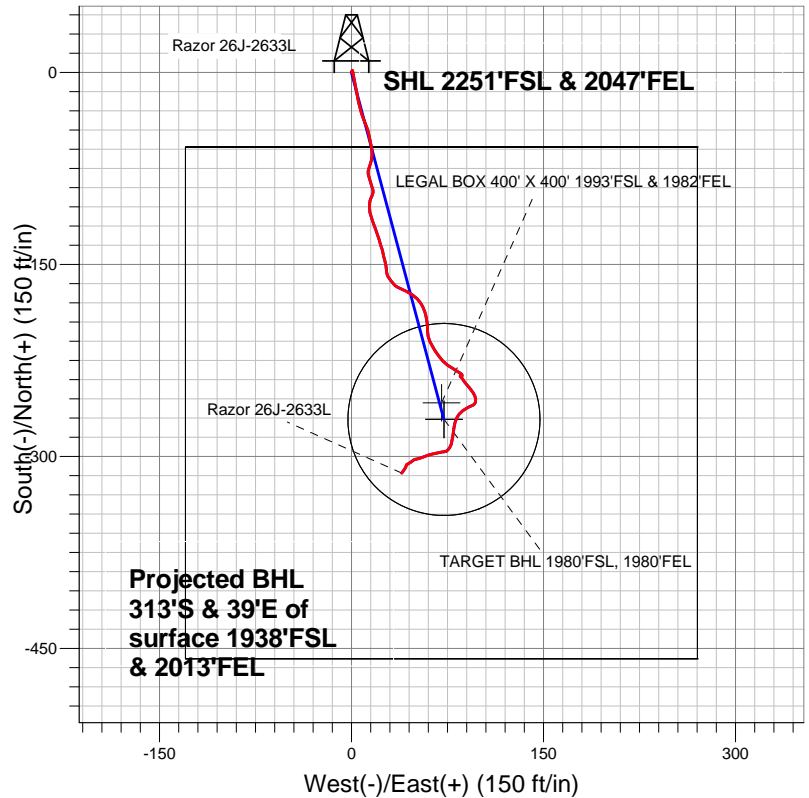


Well Name: Razor 26J-2633L

Surface Location: Razor 26J-2633L Pad Sec.26-T10-R58W
North American Datum 1983 US State Plane 1983 Colorado Northern Zone
Ground Elevation: 4725.6
+N/-S +E/-W Northing Easting Latitude Longitude Slot
0.0 0.0 1541755.08 3462287.95 40.808550 -103.829978
Original Well Elev WELL @ 4742.1ft (Original Well Elev)



Whiting Oil & Gas



LEGEND

- △ Razor 26J-2633L, Wellbore #1, Plan #1 (4-19-13) V0
- Wellbore #1
- Survey #1

Final Survey Plot

Projected Final Survey -
9422'MD & 9412'TVD @ 313'VS
2.70 deg Inc 212.00 deg AZ

Project: SEC.26-T10N-R58W
Site: Razor 26J-2633L Pad Sec.26-T10-R58W
Well: Razor 26J-2633L
Plan: Wellbore #1



Whiting Oil & Gas

SEC.26-T10N-R58W

Razor 26J-2633L Pad Sec.26-T10-R58W

Razor 26J-2633L

Wellbore #1

Survey: Survey #1

Standard Survey Report

05 August, 2013

Company:	Whiting Oil & Gas	Local Co-ordinate Reference:	Well Razor 26J-2633L
Project:	SEC.26-T10N-R58W	TVD Reference:	WELL @ 4742.1ft (Original Well Elev)
Site:	Razor 26J-2633L Pad Sec.26-T10-R58W	MD Reference:	WELL @ 4742.1ft (Original Well Elev)
Well:	Razor 26J-2633L	North Reference:	True
Wellbore:	Wellbore #1	Survey Calculation Method:	Minimum Curvature
Design:	Wellbore #1	Database:	Landmark

Project	SEC.26-T10N-R58W, Weld County, Colorado		
Map System:	US State Plane 1983	System Datum:	Mean Sea Level
Geo Datum:	North American Datum 1983		Using Well Reference Point
Map Zone:	Colorado Northern Zone		Using geodetic scale factor

Site		Razor 26J-2633L Pad Sec.26-T10-R58W			
Site Position:		Northing:		1,541,755.09ft	
From:	Lat/Long	Easting:		Longitude:	
		3,462,287.95ft		-103.829978	
Position Uncertainty:		Slot Radius:		Grid Convergence:	
0.0 ft		"		1.08 °	

Well	Razor 26J-2633L					
Well Position	+N/-S	0.0 ft	Northing:	1,541,755.08 ft	Latitude:	40.808550
	+E/-W	0.0 ft	Easting:	3,462,287.95 ft	Longitude:	-103.829978
Position Uncertainty		0.0 ft	Wellhead Elevation:	ft	Ground Level:	4,725.6 ft

Wellbore	Wellbore #1				
Magnetics	Model Name	Sample Date	Declination (°)	Dip Angle (°)	Field Strength (nT)
	IGRF2010	4/24/2013	8.13	67.46	53,244

Design	Wellbore #1				
Audit Notes:					
Version:	1.0	Phase:	ACTUAL	Tie On Depth:	0.0
Vertical Section:	Depth From (TVD) (ft)	+N/-S (ft)	+E/-W (ft)	Direction (°)	
	5,500.0	0.0	0.0	165.07	

Survey Program		Date	8/5/2013		
From (ft)	To (ft)	Survey (Wellbore)	Tool Name	Description	
128.0	9,422.0	Survey #1 (Wellbore #1)	MWD	MWD - Standard	

Survey									
Measured Depth (ft)	Inclination (°)	Azimuth (°)	Vertical Depth (ft)	+N/-S (ft)	+E/-W (ft)	Vertical Section (ft)	Dogleg Rate (°/100ft)	Build Rate (°/100ft)	Turn Rate (°/100ft)
0.0	0.00	0.00	0.0	0.0	0.0	0.0	0.00	0.00	0.00
128.0	0.90	25.40	128.0	0.9	0.4	-0.8	0.70	0.70	0.00
187.0	0.60	355.60	187.0	1.6	0.6	-1.4	0.82	-0.51	-50.51
273.0	1.60	165.50	273.0	0.9	0.9	-0.7	2.55	1.16	197.56
359.0	2.80	169.10	358.9	-2.3	1.6	2.6	1.40	1.40	4.19
449.0	4.00	168.30	448.8	-7.5	2.6	8.0	1.33	1.33	-0.89
536.0	3.50	173.20	535.6	-13.1	3.6	13.6	0.68	-0.57	5.63
630.0	3.60	167.00	629.4	-18.9	4.6	19.4	0.42	0.11	-6.60
723.0	4.00	167.90	722.2	-24.9	5.9	25.6	0.43	0.43	0.97
817.0	3.30	160.70	816.0	-30.6	7.5	31.5	0.89	-0.74	-7.66
912.0	3.60	160.70	910.8	-36.0	9.4	37.2	0.32	0.32	0.00
1,006.0	4.00	157.40	1,004.6	-41.9	11.6	43.4	0.48	0.43	-3.51
1,100.0	2.80	168.40	1,098.4	-47.1	13.3	49.0	1.45	-1.28	11.70

Company:	Whiting Oil & Gas	Local Co-ordinate Reference:	Well Razor 26J-2633L
Project:	SEC.26-T10N-R58W	TVD Reference:	WELL @ 4742.1ft (Original Well Elev)
Site:	Razor 26J-2633L Pad Sec.26-T10-R58W	MD Reference:	WELL @ 4742.1ft (Original Well Elev)
Well:	Razor 26J-2633L	North Reference:	True
Wellbore:	Wellbore #1	Survey Calculation Method:	Minimum Curvature
Design:	Wellbore #1	Database:	Landmark

Survey

Measured Depth (ft)	Inclination (°)	Azimuth (°)	Vertical Depth (ft)	+N/-S (ft)	+E/-W (ft)	Vertical Section (ft)	Dogleg Rate (°/100ft)	Build Rate (°/100ft)	Turn Rate (°/100ft)
1,195.0	3.00	169.80	1,193.3	-51.8	14.2	53.8	0.22	0.21	1.47
1,290.0	3.70	166.70	1,288.2	-57.3	15.4	59.3	0.76	0.74	-3.26
1,384.0	3.70	177.90	1,382.0	-63.3	16.2	65.3	0.77	0.00	11.91
1,478.0	3.70	196.90	1,475.8	-69.2	15.4	70.8	1.30	0.00	20.21
1,565.0	4.10	197.60	1,562.6	-74.8	13.7	75.8	0.46	0.46	0.80
1,666.0	2.80	161.90	1,663.4	-80.6	13.3	81.3	2.43	-1.29	-35.35
1,761.0	2.80	164.20	1,758.3	-85.1	14.7	86.0	0.12	0.00	2.42
1,856.0	1.80	159.50	1,853.2	-88.7	15.8	89.8	1.07	-1.05	-4.95
1,951.0	1.40	162.60	1,948.2	-91.2	16.7	92.4	0.43	-0.42	3.26
2,045.0	1.50	184.80	2,042.1	-93.5	16.9	94.7	0.60	0.11	23.62
2,140.0	1.80	203.80	2,137.1	-96.1	16.2	97.1	0.65	0.32	20.00
2,233.0	1.90	207.10	2,230.1	-98.8	14.9	99.4	0.16	0.11	3.55
2,327.0	2.70	181.60	2,324.0	-102.4	14.2	102.6	1.36	0.85	-27.13
2,422.0	3.60	175.80	2,418.8	-107.7	14.3	107.7	1.00	0.95	-6.11
2,516.0	3.00	161.60	2,512.7	-112.9	15.3	113.1	1.07	-0.64	-15.11
2,611.0	3.20	158.40	2,607.5	-117.8	17.1	118.2	0.28	0.21	-3.37
2,706.0	2.80	161.20	2,702.4	-122.4	18.8	123.1	0.45	-0.42	2.95
2,800.0	2.70	160.90	2,796.3	-126.7	20.3	127.6	0.11	-0.11	-0.32
2,893.0	2.60	164.00	2,889.2	-130.8	21.6	131.9	0.19	-0.11	3.33
2,988.0	2.50	159.30	2,984.1	-134.8	22.9	136.1	0.24	-0.11	-4.95
3,083.0	2.70	167.40	3,079.0	-138.9	24.1	140.4	0.44	0.21	8.53
3,178.0	2.60	166.00	3,173.9	-143.2	25.1	144.8	0.13	-0.11	-1.47
3,273.0	2.60	165.80	3,268.8	-147.4	26.2	149.1	0.01	0.00	-0.21
3,367.0	2.60	170.20	3,362.7	-151.5	27.1	153.4	0.21	0.00	4.68
3,459.0	2.50	179.50	3,454.6	-155.6	27.4	157.4	0.46	-0.11	10.11
3,554.0	3.30	147.50	3,549.5	-160.0	28.9	162.0	1.87	0.84	-33.68
3,649.0	3.30	140.10	3,644.4	-164.4	32.1	167.1	0.45	0.00	-7.79
3,743.0	2.90	121.70	3,738.2	-167.7	35.9	171.3	1.13	-0.43	-19.57
3,838.0	2.90	110.30	3,833.1	-169.8	40.2	174.4	0.61	0.00	-12.00
3,933.0	4.60	119.90	3,927.9	-172.5	45.8	178.5	1.90	1.79	10.11
4,027.0	4.70	136.60	4,021.6	-177.2	51.7	184.5	1.44	0.11	17.77
4,121.0	4.70	155.40	4,115.3	-183.5	55.9	191.7	1.63	0.00	20.00
4,216.0	3.80	168.60	4,210.0	-190.1	58.2	198.7	1.39	-0.95	13.89
4,311.0	3.40	172.10	4,304.8	-196.0	59.2	204.6	0.48	-0.42	3.68
4,405.0	1.80	182.50	4,398.7	-200.2	59.5	208.8	1.77	-1.70	11.06
4,499.0	2.50	175.10	4,492.7	-203.8	59.6	212.2	0.80	0.74	-7.87
4,594.0	2.60	163.00	4,587.6	-207.9	60.4	216.4	0.58	0.11	-12.74
4,687.0	3.40	150.50	4,680.4	-212.3	62.4	221.2	1.11	0.86	-13.44
4,782.0	3.30	150.50	4,775.3	-217.1	65.1	226.6	0.11	-0.11	0.00
4,876.0	3.20	139.80	4,869.1	-221.5	68.1	231.6	0.65	-0.11	-11.38
4,971.0	3.20	137.90	4,964.0	-225.5	71.6	236.3	0.11	0.00	-2.00
5,065.0	2.90	124.50	5,057.9	-228.8	75.4	240.5	0.82	-0.32	-14.26
5,160.0	3.00	119.80	5,152.7	-231.4	79.5	244.0	0.28	0.11	-4.95
5,254.0	2.80	125.40	5,246.6	-233.9	83.5	247.5	0.37	-0.21	5.96
5,349.0	0.70	116.60	5,341.6	-235.5	85.9	249.7	2.22	-2.21	-9.26
5,444.0	1.00	173.50	5,436.5	-236.6	86.5	250.9	0.90	0.32	59.89
5,507.8	0.87	268.39	5,500.3	-237.2	86.1	251.4	2.16	-0.21	148.78
TARGET BHL 1980'FSL, 1980'FEL									
5,534.7	1.34	286.72	5,527.2	-237.1	85.6	251.1	2.16	1.74	68.14
LEGAL BOX 400' X 400' 1993'FSL & 1982'FEL									
5,534.8	1.34	286.76	5,527.3	-237.1	85.6	251.1	2.16	1.91	43.40
TARGET CIRCLE 1980'FSL & 1980'FEL									
5,538.0	1.40	288.10	5,530.5	-237.1	85.5	251.1	2.16	1.92	41.43
5,633.0	1.50	136.80	5,625.5	-237.6	85.3	251.6	2.96	0.11	-159.26

Company:	Whiting Oil & Gas	Local Co-ordinate Reference:	Well Razor 26J-2633L
Project:	SEC.26-T10N-R58W	TVD Reference:	WELL @ 4742.1ft (Original Well Elev)
Site:	Razor 26J-2633L Pad Sec.26-T10-R58W	MD Reference:	WELL @ 4742.1ft (Original Well Elev)
Well:	Razor 26J-2633L	North Reference:	True
Wellbore:	Wellbore #1	Survey Calculation Method:	Minimum Curvature
Design:	Wellbore #1	Database:	Landmark

Survey

Measured Depth (ft)	Inclination (°)	Azimuth (°)	Vertical Depth (ft)	+N/-S (ft)	+E/-W (ft)	Vertical Section (ft)	Dogleg Rate (°/100ft)	Build Rate (°/100ft)	Turn Rate (°/100ft)
5,727.0	2.80	145.60	5,719.5	-240.4	87.4	254.8	1.42	1.38	9.36
5,821.0	3.10	142.10	5,813.3	-244.3	90.3	259.3	0.37	0.32	-3.72
5,917.0	2.90	134.70	5,909.2	-248.1	93.6	263.8	0.45	-0.21	-7.71
6,011.0	4.10	161.90	6,003.0	-252.9	96.3	269.2	2.15	1.28	28.94
6,106.0	2.00	196.60	6,097.9	-257.8	96.9	274.0	2.85	-2.21	36.53
6,200.0	3.70	247.00	6,191.8	-260.5	93.6	275.8	3.06	1.81	53.62
6,295.0	3.30	238.60	6,286.6	-263.1	88.5	277.1	0.68	-0.42	-8.84
6,389.0	2.60	220.00	6,380.5	-266.2	84.8	279.0	1.25	-0.74	-19.79
6,484.0	2.40	209.00	6,475.4	-269.6	82.5	281.7	0.55	-0.21	-11.58
6,579.0	2.20	197.30	6,570.3	-273.1	81.0	284.7	0.54	-0.21	-12.32
6,673.0	2.10	187.60	6,664.3	-276.5	80.2	287.8	0.40	-0.11	-10.32
6,768.0	1.80	187.40	6,759.2	-279.7	79.8	290.8	0.32	-0.32	-0.21
6,863.0	1.70	187.80	6,854.2	-282.6	79.4	293.5	0.11	-0.11	0.42
6,945.0	1.70	189.20	6,936.1	-285.0	79.0	295.7	0.05	0.00	1.71
7,053.0	1.60	190.00	7,044.1	-288.0	78.5	298.5	0.10	-0.09	0.74
7,146.0	1.20	197.40	7,137.0	-290.2	78.0	300.5	0.47	-0.43	7.96
7,240.0	1.40	206.20	7,231.0	-292.2	77.2	302.2	0.30	0.21	9.36
7,334.0	2.40	219.40	7,325.0	-294.8	75.4	304.2	1.15	1.06	14.04
7,428.0	2.10	268.10	7,418.9	-296.3	72.5	305.0	1.99	-0.32	51.81
7,465.0	2.40	262.10	7,455.9	-296.5	71.0	304.8	1.03	0.81	-16.22
7,617.0	1.80	253.70	7,607.8	-297.6	65.6	304.4	0.44	-0.39	-5.53
7,709.0	1.80	261.10	7,699.7	-298.2	62.8	304.3	0.25	0.00	8.04
7,804.0	1.70	252.30	7,794.7	-298.9	59.9	304.2	0.30	-0.11	-9.26
7,898.0	1.40	243.70	7,888.7	-299.8	57.6	304.5	0.40	-0.32	-9.15
7,992.0	1.20	251.90	7,982.6	-300.6	55.6	304.8	0.29	-0.21	8.72
8,087.0	1.10	252.30	8,077.6	-301.2	53.8	304.9	0.11	-0.11	0.42
8,181.0	1.00	254.90	8,171.6	-301.7	52.2	304.9	0.12	-0.11	2.77
8,275.0	0.70	259.30	8,265.6	-302.0	50.8	304.9	0.33	-0.32	4.68
8,370.0	0.70	257.00	8,360.6	-302.2	49.7	304.8	0.03	0.00	-2.42
8,465.0	0.90	231.40	8,455.6	-302.8	48.5	305.1	0.43	0.21	-26.95
8,558.0	0.60	244.40	8,548.6	-303.5	47.5	305.5	0.37	-0.32	13.98
8,652.0	0.70	227.90	8,642.6	-304.1	46.6	305.9	0.22	0.11	-17.55
8,745.0	1.00	236.10	8,735.5	-304.9	45.5	306.4	0.35	0.32	8.82
8,839.0	0.70	237.00	8,829.5	-305.7	44.4	306.8	0.32	-0.32	0.96
8,933.0	0.40	260.20	8,923.5	-306.1	43.6	307.0	0.39	-0.32	24.68
9,027.0	0.40	221.40	9,017.5	-306.4	43.0	307.1	0.28	0.00	-41.28
9,121.0	0.60	192.00	9,111.5	-307.1	42.7	307.7	0.34	0.21	-31.28
9,214.0	0.70	190.60	9,204.5	-308.1	42.5	308.7	0.11	0.11	-1.51
9,308.0	1.40	220.50	9,298.5	-309.6	41.7	309.9	0.92	0.74	31.81
9,372.0	2.20	212.20	9,362.5	-311.2	40.5	311.1	1.31	1.25	-12.97
9,422.0	2.70	212.00	9,412.4	-313.0	39.4	312.6	1.00	1.00	-0.40

Checked By: _____ Approved By: _____ Date: _____