

WPX ENERGY ROCKY MOUNTAIN, LLC

EXISTING: GM 342-20, GM 642-20, GM 42-20, GM 542-20, GM 442-20, PROPOSED: GM 11-21,
GM 12-21, GM 311-21, GM 411-21, GM 312-21, GM 412-21, GM 512-21

LOCATED IN GARFIELD COUNTY, COLORADO
SECTION 20, T6S, R96W, 6th P.M.

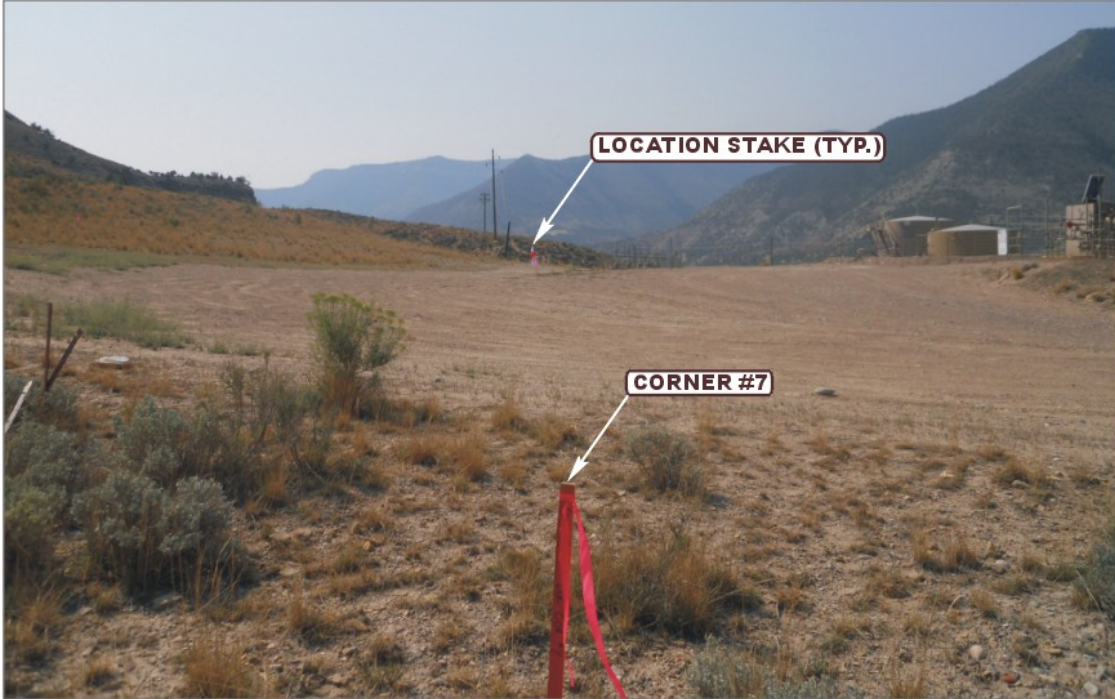


PHOTO: VIEW FROM CORNER #7 TO LOCATION STAKE

CAMERA ANGLE: SOUTHERLY



PHOTO: VIEW OF EXISTING ACCESS

CAMERA ANGLE: EASTERLY



UELS Uintah Engineering & Land Surveying
85 South 200 East Vernal, Utah 84078
435-789-1017 - FAX 435-789-1813

LOCATION PHOTOS

08 20 12
MONTH DAY YEAR

PHOTO
P1

TAKEN BY: B.E.B. DRAWN BY: J.L.G. REVISED: 00-00-00

WPX ENERGY ROCKY MOUNTAIN, LLC

EXISTING: GM 342-20, GM 642-20, GM 42-20, GM 542-20, GM 442-20, PROPOSED: GM 11-21,
GM 12-21, GM 311-21, GM 411-21, GM 312-21, GM 412-21, GM 512-21

LOCATED IN GARFIELD COUNTY, COLORADO
SECTION 20, T6S, R96W, 6th P.M.



PHOTO: VIEW OF LOCATION STAKE

CAMERA ANGLE: NORTHERLY



PHOTO: VIEW OF LOCATION STAKE

CAMERA ANGLE: SOUTHERLY



U **E** **L** **S** Uintah Engineering & Land Surveying
85 South 200 East Vernal, Utah 84078
435-789-1017 - FAX 435-789-1813

LOCATION PHOTOS	08	20	12	PHOTO P2
	MONTH	DAY	YEAR	
TAKEN BY: B.E.B.	DRAWN BY: J.L.G.		REVISED: 00-00-00	

WPX ENERGY ROCKY MOUNTAIN, LLC

EXISTING: GM 342-20, GM 642-20, GM 42-20, GM 542-20, GM 442-20, PROPOSED: GM 11-21,
GM 12-21, GM 311-21, GM 411-21, GM 312-21, GM 412-21, GM 512-21

LOCATED IN GARFIELD COUNTY, COLORADO
SECTION 20, T6S, R96W, 6th P.M.



PHOTO: VIEW OF LOCATION STAKE

CAMERA ANGLE: EASTERLY



PHOTO: VIEW OF LOCATION STAKE

CAMERA ANGLE: WESTERLY



U **E** **L** **S** Uintah Engineering & Land Surveying
85 South 200 East Vernal, Utah 84078
435-789-1017 - FAX 435-789-1813

- Since 1964 -

LOCATION PHOTOS

08 20 12
MONTH DAY YEAR

PHOTO

P3

TAKEN BY: B.E.B. DRAWN BY: J.L.G. REVISED: 00-00-00