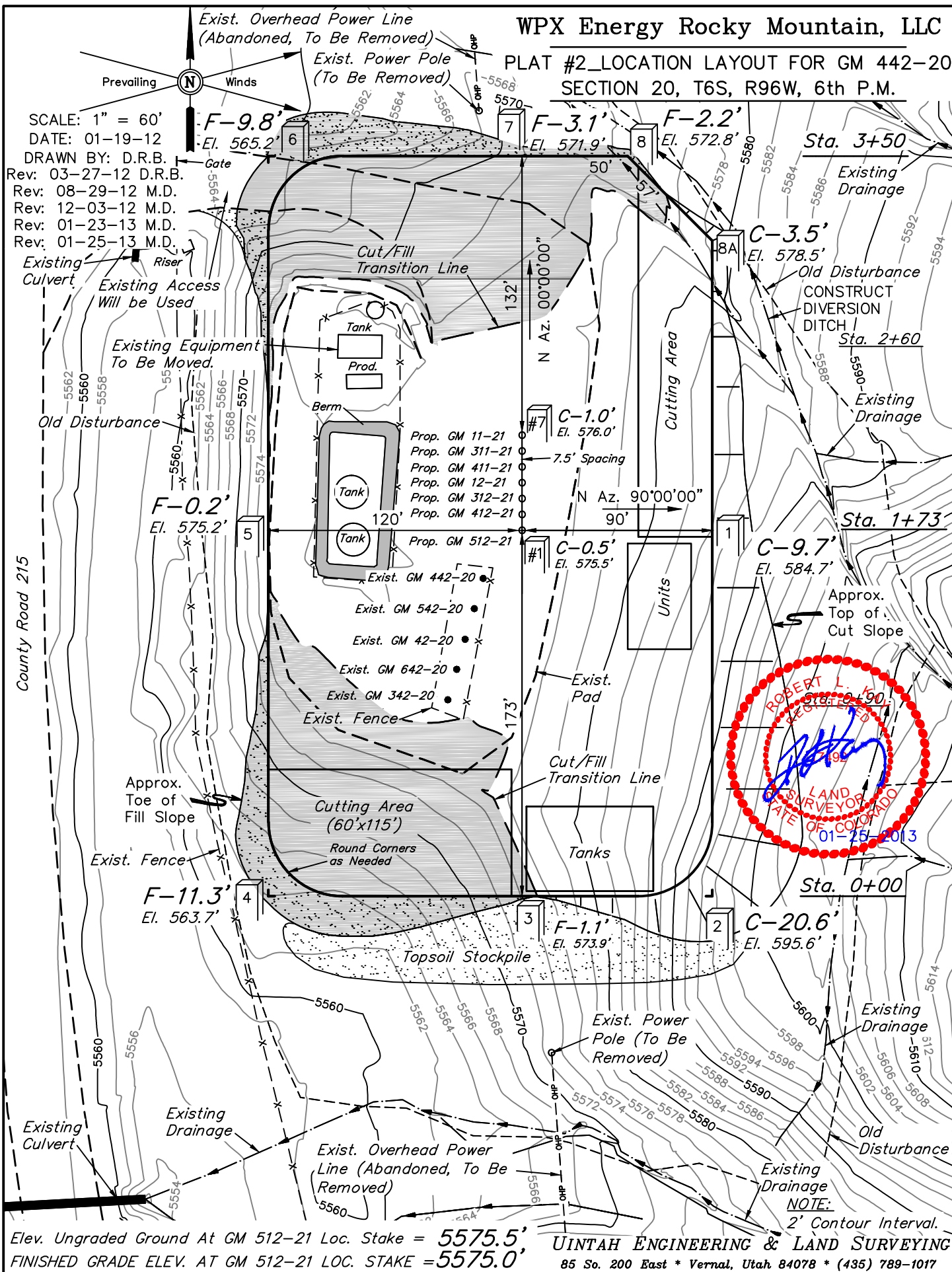


PLAT #2_LOCATION LAYOUT FOR GM 442-20
SECTION 20, T6S, R96W, 6th P.M.

FINISHED GRADE ELEV. AT GM 5

UINTAH ENGINEERING & LAND SURVEYING
85 So. 200 East * Vernal, Utah 84078 * (435) 789-1017



WPX Energy Rocky Mountain, LLC

PLAT #3_TYPICAL CROSS SECTION FOR GM 442-20
SECTION 20, T6S, R96W, 6th P.M.

1" = 40'
X-Section
Scale
1" = 100'

DATE: 01-19-12

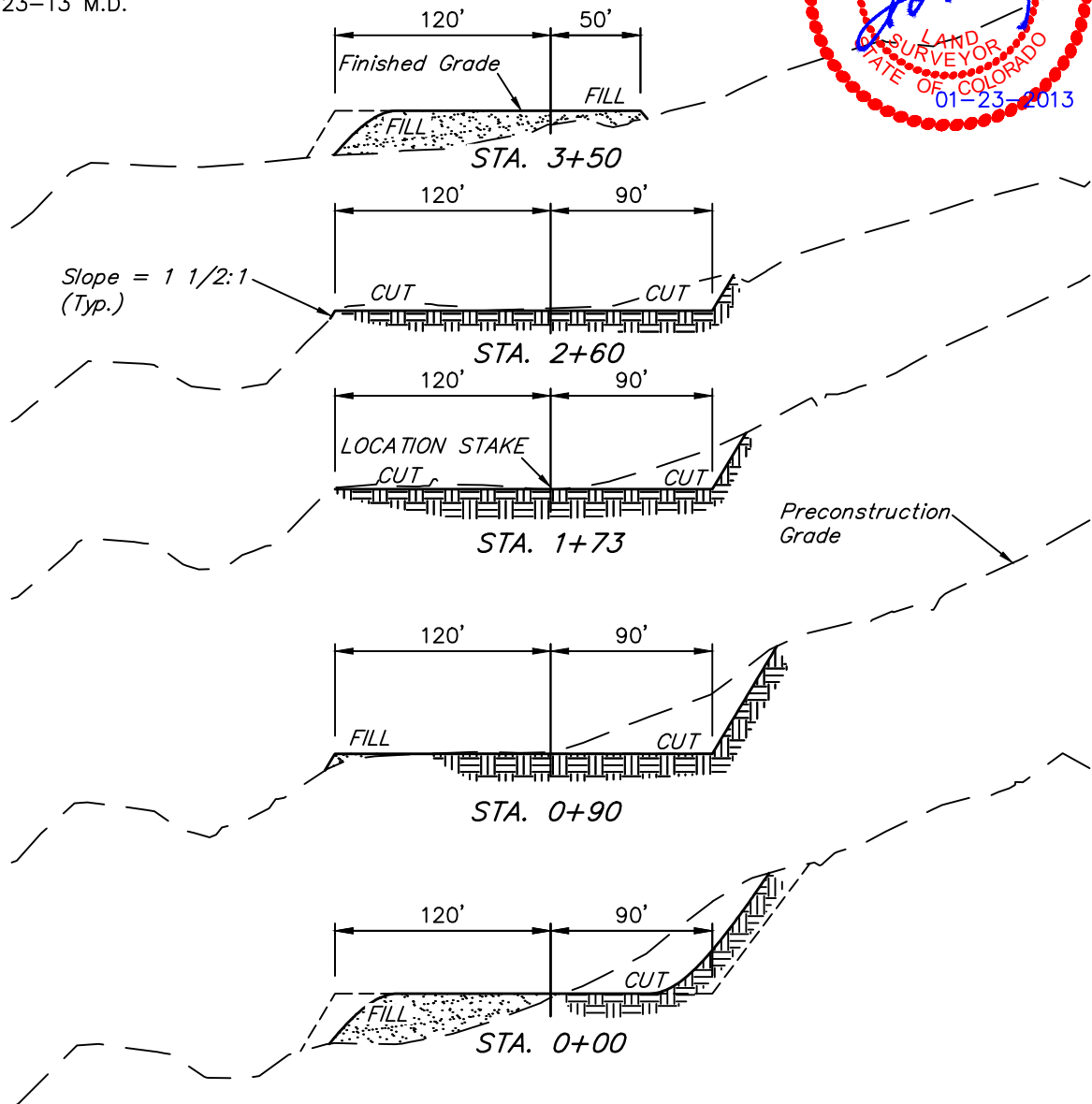
DRAWN BY: D.R.B.

Revised: 01-20-12 D.R.B.

Revised: 03-27-12 D.R.B.

Revised: 08-29-12 M.D.

Revised: 01-23-13 M.D.



NOTE:

Topsoil should not be Stripped Below Finished Grade on Substructure Area.

* NOTE:

FILL QUANTITY INCLUDES 5% FOR COMPACTION

NOTE:

CUT AND FILL SLOPES ARE DESIGNED TO BE 1 1/2:1.

APPROXIMATE YARDAGES

(6") Topsoil Stripping	=	1,090 Cu. Yds.
(New Construction Only)		
Remaining Location	=	7,000 Cu. Yds.
TOTAL CUT	=	8,090 CU.YDS.
FILL	=	4,250 CU.YDS.

EXCESS MATERIAL	=	3,840 Cu. Yds.
Topsoil	=	1,090 Cu. Yds.
EXCESS UNBALANCE	=	2,750 Cu. Yds.
(After Interim Rehabilitation)		

UINTAH ENGINEERING & LAND SURVEYING
85 So. 200 East * Vernal, Utah 84078 * (435) 789-1017