

# KERR-MCGEE OIL & GAS ONSHORE LP

Location: COLORADO Slot: SLOT#03 BARCLAY 28C-11HZ (577'FSL & 2163'FEL, SEC.14)  
 Field: WELD COUNTY (KERR MCGEE) Well: BARCLAY 28C-11HZ  
 Facility: SEC.14-T2N-R67W Wellbore: BARCLAY 28C-11HZ PWB

Plot reference wellpath is BARCLAY 28C-11HZ (PERMIT REV-1) PWB

|   |  |
|---|--|
| True vertical depths are referenced to PERMIT (17 KB) (RKB)   | Grid System: NAD83 / Lambert Colorado SP, Northern Zone (501), US feet |
| Measured depths are referenced to PERMIT (17 KB) (RKB)  | North Reference: True north  |
| PERMIT (17 KB) (RKB) to Mean Sea Level: 4949 feet   | Scale: True distance   |
| Mean Sea Level to Mud line (At Slot: SLOT#03 BARCLAY 28C-11HZ (577'FSL & 2163'FEL, SEC.14)): 0 feet | Depths are in feet   |
| Coordinates are in feet referenced to Slot  | Created by: robie01 on 21/Aug/2013                                     |

## Location Information

| Facility Name   |              |              |                   | Grid East (US ft)  | Grid North (US ft) | Latitude        | Longitude       |
|---|--------------|--------------|-------------------|--------------------|--------------------|-----------------|-----------------|
| SEC.14-T2N-R67W   |              |              |                   | 3179914.426        | 1291732.032        | 40°07'56.662"N  | 104°51'23.565"W |
| Slot  | Local N (ft) | Local E (ft) | Grid East (US ft) | Grid North (US ft) | Latitude           | Longitude       |                 |
| SLOT#03 BARCLAY 28C-11HZ (577'FSL & 2163'FEL, SEC.14)   | -0.40        | 60.04        | 3179974.465       | 1291732.063        | 40°07'56.658"N     | 104°51'22.792"W |                 |
| PERMIT (17 KB) (RKB) to Mud line (At Slot: SLOT#03 BARCLAY 28C-11HZ (577'FSL & 2163'FEL, SEC.14)) |              |              |                   |                    |                    | 4949ft          |                 |
| Mean Sea Level to Mud line (At Slot: SLOT#03 BARCLAY 28C-11HZ (577'FSL & 2163'FEL, SEC.14))       |              |              |                   |                    |                    | 0ft             |                 |
| PERMIT (17 KB) (RKB) to Mean Sea Level  |              |              |                   |                    |                    | 4949ft          |                 |

## Survey Program

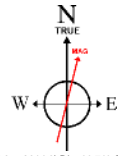
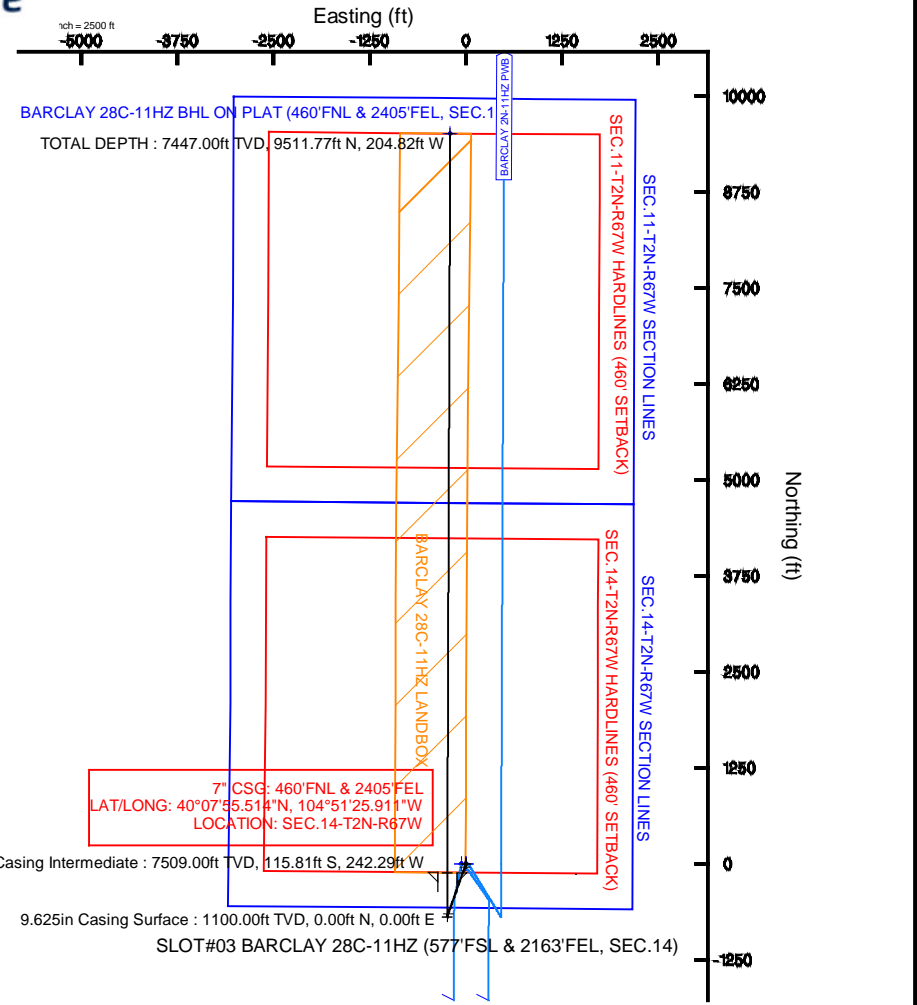
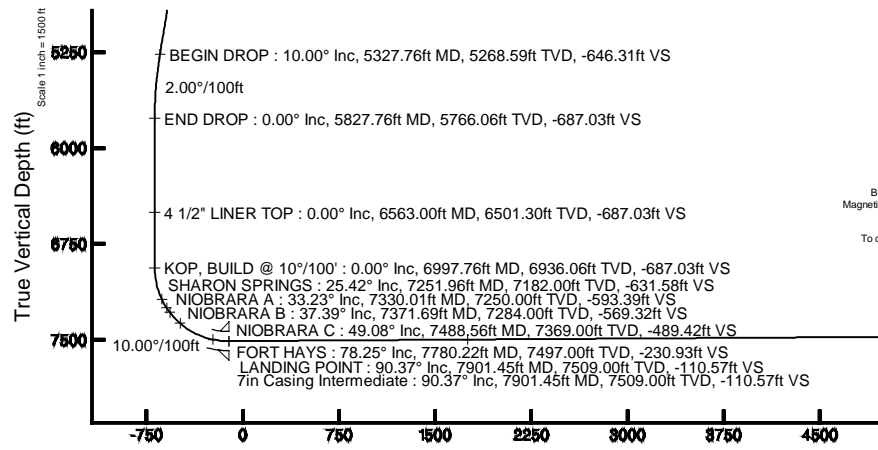
| Start MD (ft) | End MD (ft) | Tool     | Model               | Log Name/Comment | Wellbore             |
|---------------|-------------|----------|---------------------|------------------|----------------------|
| 17.00         | 7901.45     | NaviTrak | NaviTrak (Standard) |                  | BARCLAY 28C-11HZ PWB |
| 7901.45       | 17529.30    | OnTrak   | OnTrak (Standard)   |                  | BARCLAY 28C-11HZ PWB |

## Targets

| Name  | MD (ft)  | TVD (ft) | Local N (ft) | Local E (ft) | Grid East (US ft) | Grid North (US ft) | Latitude       | Longitude       |
|---|----------|----------|--------------|--------------|-------------------|--------------------|----------------|-----------------|
| SEC.11-T2N-R67W SECTION LINES                             |          | 0.00     | 0.00         | 0.00         | 3179974.47        | 1291732.06         | 40°07'56.658"N | 104°51'22.792"W |
| SEC.14-T2N-R67W SECTION LINES                             |          | 0.00     | 0.40         | -60.04       | 3179914.43        | 1291732.03         | 40°07'56.662"N | 104°51'23.565"W |
| SEC.11-T2N-R67W HARDLINES (460' SETBACK)                  |          | 7503.00  | 0.00         | 0.00         | 3179974.47        | 1291732.06         | 40°07'56.658"N | 104°51'22.792"W |
| SEC.14-T2N-R67W HARDLINES (460' SETBACK)                  |          | 7503.00  | 0.40         | -60.04       | 3179914.43        | 1291732.03         | 40°07'56.662"N | 104°51'23.565"W |
| BARCLAY 28C-11HZ BHL ON PLAT (460'FNL & 2405'FEL, SEC.11) | 17529.30 | 7447.00  | 9511.77      | -204.82      | 3179700.62        | 1301241.68         | 40°07'30.654"N | 104°51'25.430"W |
| BARCLAY 28C-11HZ LANDBOX                                  |          | 7447.00  | 0.00         | 0.00         | 3179974.47        | 1291732.06         | 40°07'56.658"N | 104°51'22.792"W |

## Well Profile Data

| Design Comment        | MD (ft)  | Inc (°) | Az (°)  | TVD (ft) | Local N (ft) | Local E (ft) | DLS (°/100ft) | VS (ft) |
|-----------------------|----------|---------|---------|----------|--------------|--------------|---------------|---------|
| TIE ON                | 17.00    | 0.000   | 199.450 | 17.00    | 0.00         | 0.00         | 0.00          | 0.00    |
| BEGIN NUDGE           | 1100.00  | 0.000   | 199.450 | 1100.00  | 0.00         | 0.00         | 0.00          | 0.00    |
| END NUDGE             | 1600.00  | 10.000  | 199.450 | 1597.47  | -41.04       | -14.49       | 2.00          | -40.72  |
| BEGIN DROP            | 5327.76  | 10.000  | 199.450 | 5268.59  | -651.42      | -230.04      | 0.00          | -646.31 |
| END DROP              | 5827.76  | 0.000   | 0.223   | 5766.06  | -692.46      | -244.53      | 2.00          | -687.03 |
| KOP, BUILD @ 10°/100' | 6997.76  | 0.000   | 0.223   | 6936.06  | -692.46      | -244.53      | 0.00          | -687.03 |
| LANDING POINT         | 7901.45  | 90.369  | 0.223   | 7509.00  | -115.81      | -242.29      | 10.00         | -110.57 |
| TOTAL DEPTH           | 17529.30 | 90.369  | 0.223   | 7447.00  | 9511.77      | -204.82      | 0.00          | 9513.97 |



BGGM (1945.0 to 2014.0) Dip: 66.71° Field: 52644 nT  
 Magnetic North is 8.65 degrees East of True North (at 16/Aug/2013)

To correct azimuth from Magnetic to True add 8.65 degrees

Vertical Section (ft)

Azimuth 358.77° with reference 0.00 N, 0.00 E

Scale 1 inch = 1500 ft



# Planned Wellpath Report

## BARCLAY 28C-11HZ (PERMIT REV-1) PWP

Page 1 of 8



### REFERENCE WELLPATH IDENTIFICATION

|          |                                 |          |   |
|----------|---------------------------------|----------|---|
| Operator | KERR-MCGEE OIL & GAS ONSHORE LP | Slot     | SLOT#03 BARCLAY 28C-11HZ (577'FSL & 2163'FEL, SEC.14) |
| Area     | COLORADO                        | Well     | BARCLAY 28C-11HZ                                      |
| Field    | WELD COUNTY (KERR MCGEE)        | Wellbore | BARCLAY 28C-11HZ PWB                                  |
| Facility | SEC.14-T2N-R67W                 |          |   |

### REPORT SETUP INFORMATION

|                     |   |                      |                                      |
|---------------------|---|----------------------|--------------------------------------|
| Projection System   | NAD83 / Lambert Colorado SP, Northern Zone (501), US feet | Software System      | WellArchitect® 4.0.0                 |
| North Reference     | True  | User                 | Robiale01                            |
| Scale               | 0.999959  | Report Generated     | 20/Aug/2013 at 15:43                 |
| Convergence at slot | n/a   | Database/Source file | WA_ANADARKO/BARCLAY_28C-11HZ_PWB.xml |

### WELLPATH LOCATION

|                       | Local coordinates |          | Grid coordinates  |                   | Geographic coordinates |                 |
|-----------------------|-------------------|----------|-------------------|-------------------|------------------------|-----------------|
|                       | North[ft]         | East[ft] | Easting[US ft]    | Northing[US ft]   | Latitude               | Longitude       |
| Slot Location         | -0.40             | 60.04    | 3179974.47        | 1291732.06        | 40°07'56.658"N         | 104°51'22.792"W |
| Facility Reference Pt |                   |          | 3179914.43        | 1291732.03        | 40°07'56.662"N         | 104°51'23.565"W |
| Field Reference Pt    |                   |          | <b>3197771.84</b> | <b>1268891.29</b> | 40°04'09.600"N         | 104°47'36.000"W |

### WELLPATH DATUM

|                          |                       |   |                   |
|--------------------------|-----------------------|---|-------------------|
| Calculation method       | Minimum curvature     | PERMIT (17' KB) (RKB) to Facility Vertical Datum  | 4949.00ft         |
| Horizontal Reference Pt  | Slot                  | PERMIT (17' KB) (RKB) to Mean Sea Level   | 4949.00ft         |
| Vertical Reference Pt    | PERMIT (17' KB) (RKB) | PERMIT (17' KB) (RKB) to Mud Line at Slot (SLOT#03 BARCLAY 28C-11HZ (577'FSL & 2163'FEL, SEC.14)) | 4949.00ft         |
| MD Reference Pt          | PERMIT (17' KB) (RKB) | Section Origin  | N 0.00, E 0.00 ft |
| Field Vertical Reference | Mean Sea Level        | Section Azimuth   | 358.77°           |



# Planned Wellpath Report

## BARCLAY 28C-11HZ (PERMIT REV-1) PWP

Page 2 of 8



### REFERENCE WELLPATH IDENTIFICATION

|          |                                 |          |   |
|----------|---------------------------------|----------|---|
| Operator | KERR-MCGEE OIL & GAS ONSHORE LP | Slot     | SLOT#03 BARCLAY 28C-11HZ (577'FSL & 2163'FEL, SEC.14) |
| Area     | COLORADO                        | Well     | BARCLAY 28C-11HZ                                      |
| Field    | WELD COUNTY (KERR MCGEE)        | Wellbore | BARCLAY 28C-11HZ PWB                                  |
| Facility | SEC.14-T2N-R67W                 |          |   |

### WELLPATH DATA (194 stations) † = interpolated/extrapolated station

| MD [ft]  | Inclination [°] | Azimuth [°] | TVD [ft] | Vert Sect [ft] | North [ft] | East [ft] | Latitude       | Longitude       | DLS [°/100ft] | Comments       |
|----------|-----------------|-------------|----------|----------------|------------|-----------|----------------|-----------------|---------------|----------------|
| 0.00†    | 0.000           | 199.450     | 0.00     | 0.00           | 0.00       | 0.00      | 40°07'56.658"N | 104°51'22.792"W | 0.00          |                |
| 17.00    | 0.000           | 199.450     | 17.00    | 0.00           | 0.00       | 0.00      | 40°07'56.658"N | 104°51'22.792"W | 0.00          | TIE ON         |
| 117.00†  | 0.000           | 199.450     | 117.00   | 0.00           | 0.00       | 0.00      | 40°07'56.658"N | 104°51'22.792"W | 0.00          |                |
| 217.00†  | 0.000           | 199.450     | 217.00   | 0.00           | 0.00       | 0.00      | 40°07'56.658"N | 104°51'22.792"W | 0.00          |                |
| 317.00†  | 0.000           | 199.450     | 317.00   | 0.00           | 0.00       | 0.00      | 40°07'56.658"N | 104°51'22.792"W | 0.00          |                |
| 417.00†  | 0.000           | 199.450     | 417.00   | 0.00           | 0.00       | 0.00      | 40°07'56.658"N | 104°51'22.792"W | 0.00          |                |
| 517.00†  | 0.000           | 199.450     | 517.00   | 0.00           | 0.00       | 0.00      | 40°07'56.658"N | 104°51'22.792"W | 0.00          |                |
| 617.00†  | 0.000           | 199.450     | 617.00   | 0.00           | 0.00       | 0.00      | 40°07'56.658"N | 104°51'22.792"W | 0.00          |                |
| 717.00†  | 0.000           | 199.450     | 717.00   | 0.00           | 0.00       | 0.00      | 40°07'56.658"N | 104°51'22.792"W | 0.00          |                |
| 817.00†  | 0.000           | 199.450     | 817.00   | 0.00           | 0.00       | 0.00      | 40°07'56.658"N | 104°51'22.792"W | 0.00          |                |
| 917.00†  | 0.000           | 199.450     | 917.00   | 0.00           | 0.00       | 0.00      | 40°07'56.658"N | 104°51'22.792"W | 0.00          |                |
| 991.00†  | 0.000           | 199.450     | 991.00   | 0.00           | 0.00       | 0.00      | 40°07'56.658"N | 104°51'22.792"W | 0.00          | FOX HILLS BASE |
| 1017.00† | 0.000           | 199.450     | 1017.00  | 0.00           | 0.00       | 0.00      | 40°07'56.658"N | 104°51'22.792"W | 0.00          |                |
| 1100.00  | 0.000           | 199.450     | 1100.00  | 0.00           | 0.00       | 0.00      | 40°07'56.658"N | 104°51'22.792"W | 0.00          | BEGIN NUDGE    |
| 1117.00† | 0.340           | 199.450     | 1117.00  | -0.05          | -0.05      | -0.02     | 40°07'56.658"N | 104°51'22.792"W | 2.00          |                |
| 1217.00† | 2.340           | 199.450     | 1216.97  | -2.23          | -2.25      | -0.80     | 40°07'56.636"N | 104°51'22.802"W | 2.00          |                |
| 1317.00† | 4.340           | 199.450     | 1316.79  | -7.69          | -7.75      | -2.74     | 40°07'56.581"N | 104°51'22.827"W | 2.00          |                |
| 1417.00† | 6.340           | 199.450     | 1416.35  | -16.39         | -16.52     | -5.83     | 40°07'56.495"N | 104°51'22.867"W | 2.00          |                |
| 1517.00† | 8.340           | 199.450     | 1515.53  | -28.34         | -28.57     | -10.09    | 40°07'56.376"N | 104°51'22.922"W | 2.00          |                |
| 1600.00  | 10.000          | 199.450     | 1597.47  | -40.72         | -41.04     | -14.49    | 40°07'56.252"N | 104°51'22.979"W | 2.00          | END NUDGE      |
| 1617.00† | 10.000          | 199.450     | 1614.21  | -43.48         | -43.82     | -15.48    | 40°07'56.225"N | 104°51'22.991"W | 0.00          |                |
| 1717.00† | 10.000          | 199.450     | 1712.69  | -59.72         | -60.20     | -21.26    | 40°07'56.063"N | 104°51'23.066"W | 0.00          |                |
| 1817.00† | 10.000          | 199.450     | 1811.17  | -75.97         | -76.57     | -27.04    | 40°07'55.901"N | 104°51'23.140"W | 0.00          |                |
| 1917.00† | 10.000          | 199.450     | 1909.65  | -92.22         | -92.94     | -32.82    | 40°07'55.740"N | 104°51'23.215"W | 0.00          |                |
| 2017.00† | 10.000          | 199.450     | 2008.13  | -108.46        | -109.32    | -38.60    | 40°07'55.578"N | 104°51'23.289"W | 0.00          |                |
| 2117.00† | 10.000          | 199.450     | 2106.61  | -124.71        | -125.69    | -44.39    | 40°07'55.416"N | 104°51'23.363"W | 0.00          |                |
| 2217.00† | 10.000          | 199.450     | 2205.09  | -140.95        | -142.07    | -50.17    | 40°07'55.254"N | 104°51'23.438"W | 0.00          |                |
| 2317.00† | 10.000          | 199.450     | 2303.57  | -157.20        | -158.44    | -55.95    | 40°07'55.092"N | 104°51'23.512"W | 0.00          |                |
| 2417.00† | 10.000          | 199.450     | 2402.05  | -173.44        | -174.81    | -61.73    | 40°07'54.930"N | 104°51'23.587"W | 0.00          |                |
| 2517.00† | 10.000          | 199.450     | 2500.53  | -189.69        | -191.19    | -67.52    | 40°07'54.769"N | 104°51'23.661"W | 0.00          |                |
| 2617.00† | 10.000          | 199.450     | 2599.01  | -205.93        | -207.56    | -73.30    | 40°07'54.607"N | 104°51'23.736"W | 0.00          |                |
| 2717.00† | 10.000          | 199.450     | 2697.50  | -222.18        | -223.93    | -79.08    | 40°07'54.445"N | 104°51'23.810"W | 0.00          |                |
| 2817.00† | 10.000          | 199.450     | 2795.98  | -238.43        | -240.31    | -84.86    | 40°07'54.283"N | 104°51'23.885"W | 0.00          |                |
| 2917.00† | 10.000          | 199.450     | 2894.46  | -254.67        | -256.68    | -90.64    | 40°07'54.121"N | 104°51'23.959"W | 0.00          |                |
| 3017.00† | 10.000          | 199.450     | 2992.94  | -270.92        | -273.06    | -96.43    | 40°07'53.960"N | 104°51'24.033"W | 0.00          |                |
| 3117.00† | 10.000          | 199.450     | 3091.42  | -287.16        | -289.43    | -102.21   | 40°07'53.798"N | 104°51'24.108"W | 0.00          |                |
| 3217.00† | 10.000          | 199.450     | 3189.90  | -303.41        | -305.80    | -107.99   | 40°07'53.636"N | 104°51'24.182"W | 0.00          |                |
| 3317.00† | 10.000          | 199.450     | 3288.38  | -319.65        | -322.18    | -113.77   | 40°07'53.474"N | 104°51'24.257"W | 0.00          |                |
| 3417.00† | 10.000          | 199.450     | 3386.86  | -335.90        | -338.55    | -119.56   | 40°07'53.312"N | 104°51'24.331"W | 0.00          |                |
| 3517.00† | 10.000          | 199.450     | 3485.34  | -352.14        | -354.93    | -125.34   | 40°07'53.151"N | 104°51'24.406"W | 0.00          |                |
| 3617.00† | 10.000          | 199.450     | 3583.82  | -368.39        | -371.30    | -131.12   | 40°07'52.989"N | 104°51'24.480"W | 0.00          |                |
| 3717.00† | 10.000          | 199.450     | 3682.30  | -384.64        | -387.67    | -136.90   | 40°07'52.827"N | 104°51'24.555"W | 0.00          |                |
| 3817.00† | 10.000          | 199.450     | 3780.78  | -400.88        | -404.05    | -142.68   | 40°07'52.665"N | 104°51'24.629"W | 0.00          |                |
| 3917.00† | 10.000          | 199.450     | 3879.26  | -417.13        | -420.42    | -148.47   | 40°07'52.503"N | 104°51'24.703"W | 0.00          |                |
| 4017.00† | 10.000          | 199.450     | 3977.75  | -433.37        | -436.79    | -154.25   | 40°07'52.342"N | 104°51'24.778"W | 0.00          |                |



# Planned Wellpath Report

## BARCLAY 28C-11HZ (PERMIT REV-1) PWP

Page 3 of 8



| REFERENCE WELLPATH IDENTIFICATION |                                 |          |   |
|-----------------------------------|---------------------------------|----------|---|
| Operator                          | KERR-MCGEE OIL & GAS ONSHORE LP | Slot     | SLOT#03 BARCLAY 28C-11HZ (577'FSL & 2163'FEL, SEC.14) |
| Area                              | COLORADO                        | Well     | BARCLAY 28C-11HZ                                      |
| Field                             | WELD COUNTY (KERR MCGEE)        | Wellbore | BARCLAY 28C-11HZ PWB                                  |
| Facility                          | SEC.14-T2N-R67W                 |          |   |

| WELLPATH DATA (194 stations) † = interpolated/extrapolated station |                 |             |          |                |            |           |                |                 |               |                       |
|--|-----------------|-------------|----------|----------------|------------|-----------|----------------|-----------------|---------------|-----------------------|
| MD [ft]  | Inclination [°] | Azimuth [°] | TVD [ft] | Vert Sect [ft] | North [ft] | East [ft] | Latitude       | Longitude       | DLS [°/100ft] | Comments              |
| 4078.18†   | 10.000          | 199.450     | 4038.00  | -443.31        | -446.81    | -157.79   | 40°07'52.243"N | 104°51'24.823"W | 0.00          | PARKMAN               |
| 4117.00†   | 10.000          | 199.450     | 4076.23  | -449.62        | -453.17    | -160.03   | 40°07'52.180"N | 104°51'24.852"W | 0.00          |                       |
| 4217.00†   | 10.000          | 199.450     | 4174.71  | -465.86        | -469.54    | -165.81   | 40°07'52.018"N | 104°51'24.927"W | 0.00          |                       |
| 4317.00†   | 10.000          | 199.450     | 4273.19  | -482.11        | -485.92    | -171.59   | 40°07'51.856"N | 104°51'25.001"W | 0.00          |                       |
| 4417.00†   | 10.000          | 199.450     | 4371.67  | -498.36        | -502.29    | -177.38   | 40°07'51.694"N | 104°51'25.076"W | 0.00          |                       |
| 4501.62†   | 10.000          | 199.450     | 4455.00  | -512.10        | -516.15    | -182.27   | 40°07'51.557"N | 104°51'25.139"W | 0.00          | SUSSEX                |
| 4517.00†   | 10.000          | 199.450     | 4470.15  | -514.60        | -518.66    | -183.16   | 40°07'51.533"N | 104°51'25.150"W | 0.00          |                       |
| 4617.00†   | 10.000          | 199.450     | 4568.63  | -530.85        | -535.04    | -188.94   | 40°07'51.371"N | 104°51'25.224"W | 0.00          |                       |
| 4717.00†   | 10.000          | 199.450     | 4667.11  | -547.09        | -551.41    | -194.72   | 40°07'51.209"N | 104°51'25.299"W | 0.00          |                       |
| 4817.00†   | 10.000          | 199.450     | 4765.59  | -563.34        | -567.79    | -200.51   | 40°07'51.047"N | 104°51'25.373"W | 0.00          |                       |
| 4917.00†   | 10.000          | 199.450     | 4864.07  | -579.58        | -584.16    | -206.29   | 40°07'50.885"N | 104°51'25.448"W | 0.00          |                       |
| 5017.00†   | 10.000          | 199.450     | 4962.55  | -595.83        | -600.53    | -212.07   | 40°07'50.723"N | 104°51'25.522"W | 0.00          |                       |
| 5117.00†   | 10.000          | 199.450     | 5061.03  | -612.07        | -616.91    | -217.85   | 40°07'50.562"N | 104°51'25.597"W | 0.00          |                       |
| 5217.00†   | 10.000          | 199.450     | 5159.52  | -628.32        | -633.28    | -223.63   | 40°07'50.400"N | 104°51'25.671"W | 0.00          |                       |
| 5317.00†   | 10.000          | 199.450     | 5258.00  | -644.57        | -649.65    | -229.42   | 40°07'50.238"N | 104°51'25.746"W | 0.00          |                       |
| 5327.76  | 10.000          | 199.450     | 5268.59  | -646.31        | -651.42    | -230.04   | 40°07'50.221"N | 104°51'25.754"W | 0.00          | BEGIN DROP            |
| 5417.00†   | 8.215           | 199.450     | 5356.70  | -659.53        | -664.74    | -234.74   | 40°07'50.089"N | 104°51'25.814"W | 2.00          |                       |
| 5517.00†   | 6.215           | 199.450     | 5455.91  | -671.28        | -676.58    | -238.92   | 40°07'49.972"N | 104°51'25.868"W | 2.00          |                       |
| 5617.00†   | 4.215           | 199.450     | 5555.49  | -679.78        | -685.15    | -241.95   | 40°07'49.887"N | 104°51'25.907"W | 2.00          |                       |
| 5717.00†   | 2.215           | 199.450     | 5655.33  | -685.03        | -690.44    | -243.82   | 40°07'49.835"N | 104°51'25.931"W | 2.00          |                       |
| 5817.00†   | 0.215           | 199.450     | 5755.30  | -687.01        | -692.44    | -244.52   | 40°07'49.815"N | 104°51'25.940"W | 2.00          |                       |
| 5827.76  | 0.000           | 0.223       | 5766.06  | -687.03        | -692.46    | -244.53   | 40°07'49.815"N | 104°51'25.940"W | 2.00          | END DROP              |
| 5917.00†   | 0.000           | 0.223       | 5855.30  | -687.03        | -692.46    | -244.53   | 40°07'49.815"N | 104°51'25.940"W | 0.00          |                       |
| 6017.00†   | 0.000           | 0.223       | 5955.30  | -687.03        | -692.46    | -244.53   | 40°07'49.815"N | 104°51'25.940"W | 0.00          |                       |
| 6117.00†   | 0.000           | 0.223       | 6055.30  | -687.03        | -692.46    | -244.53   | 40°07'49.815"N | 104°51'25.940"W | 0.00          |                       |
| 6217.00†   | 0.000           | 0.223       | 6155.30  | -687.03        | -692.46    | -244.53   | 40°07'49.815"N | 104°51'25.940"W | 0.00          |                       |
| 6317.00†   | 0.000           | 0.223       | 6255.30  | -687.03        | -692.46    | -244.53   | 40°07'49.815"N | 104°51'25.940"W | 0.00          |                       |
| 6417.00†   | 0.000           | 0.223       | 6355.30  | -687.03        | -692.46    | -244.53   | 40°07'49.815"N | 104°51'25.940"W | 0.00          |                       |
| 6517.00†   | 0.000           | 0.223       | 6455.30  | -687.03        | -692.46    | -244.53   | 40°07'49.815"N | 104°51'25.940"W | 0.00          |                       |
| 6563.00†   | 0.000           | 0.223       | 6501.30  | -687.03        | -692.46    | -244.53   | 40°07'49.815"N | 104°51'25.940"W | 0.00          | 4 1/2" LINER TOP      |
| 6617.00†   | 0.000           | 0.223       | 6555.30  | -687.03        | -692.46    | -244.53   | 40°07'49.815"N | 104°51'25.940"W | 0.00          |                       |
| 6717.00†   | 0.000           | 0.223       | 6655.30  | -687.03        | -692.46    | -244.53   | 40°07'49.815"N | 104°51'25.940"W | 0.00          |                       |
| 6817.00†   | 0.000           | 0.223       | 6755.30  | -687.03        | -692.46    | -244.53   | 40°07'49.815"N | 104°51'25.940"W | 0.00          |                       |
| 6917.00†   | 0.000           | 0.223       | 6855.30  | -687.03        | -692.46    | -244.53   | 40°07'49.815"N | 104°51'25.940"W | 0.00          |                       |
| 6997.76  | 0.000           | 0.223       | 6936.06  | -687.03        | -692.46    | -244.53   | 40°07'49.815"N | 104°51'25.940"W | 0.00          | KOP, BUILD @ 10°/100' |
| 7017.00†   | 1.924           | 0.223       | 6955.29  | -686.71        | -692.13    | -244.53   | 40°07'49.818"N | 104°51'25.940"W | 10.00         |                       |
| 7117.00†   | 11.924          | 0.223       | 7054.44  | -674.67        | -680.09    | -244.48   | 40°07'49.937"N | 104°51'25.940"W | 10.00         |                       |
| 7217.00†   | 21.924          | 0.223       | 7149.99  | -645.61        | -651.02    | -244.37   | 40°07'50.225"N | 104°51'25.938"W | 10.00         |                       |
| 7251.96†   | 25.420          | 0.223       | 7182.00  | -631.58        | -636.98    | -244.32   | 40°07'50.363"N | 104°51'25.937"W | 10.00         | SHARON SPRINGS        |
| 7317.00†   | 31.924          | 0.223       | 7239.03  | -600.40        | -605.79    | -244.19   | 40°07'50.671"N | 104°51'25.936"W | 10.00         |                       |
| 7330.01†   | 33.226          | 0.223       | 7250.00  | -593.39        | -598.79    | -244.17   | 40°07'50.741"N | 104°51'25.935"W | 10.00         | NIOBRARA A            |
| 7371.69†   | 37.393          | 0.223       | 7284.00  | -569.32        | -574.71    | -244.07   | 40°07'50.979"N | 104°51'25.934"W | 10.00         | NIOBRARA B            |
| 7417.00†   | 41.924          | 0.223       | 7318.88  | -540.42        | -545.80    | -243.96   | 40°07'51.264"N | 104°51'25.933"W | 10.00         |                       |
| 7488.56†   | 49.081          | 0.223       | 7369.00  | -489.42        | -494.78    | -243.76   | 40°07'51.768"N | 104°51'25.930"W | 10.00         | NIOBRARA C            |
| 7517.00†   | 51.924          | 0.223       | 7387.09  | -467.49        | -472.84    | -243.68   | 40°07'51.985"N | 104°51'25.929"W | 10.00         |                       |



# Planned Wellpath Report

## BARCLAY 28C-11HZ (PERMIT REV-1) PWP

Page 4 of 8



| REFERENCE WELLPATH IDENTIFICATION |                                 |          |   |
|-----------------------------------|---------------------------------|----------|---|
| Operator                          | KERR-MCGEE OIL & GAS ONSHORE LP | Slot     | SLOT#03 BARCLAY 28C-11HZ (577'FSL & 2163'FEL, SEC.14) |
| Area                              | COLORADO                        | Well     | BARCLAY 28C-11HZ                                      |
| Field                             | WELD COUNTY (KERR MCGEE)        | Wellbore | BARCLAY 28C-11HZ PWB                                  |
| Facility                          | SEC.14-T2N-R67W                 |          |   |

| WELLPATH DATA (194 stations) † = interpolated/extrapolated station |                 |             |          |                |            |           |                |                 |               |               |
|--|-----------------|-------------|----------|----------------|------------|-----------|----------------|-----------------|---------------|---------------|
| MD [ft]  | Inclination [°] | Azimuth [°] | TVD [ft] | Vert Sect [ft] | North [ft] | East [ft] | Latitude       | Longitude       | DLS [°/100ft] | Comments      |
| 7617.00†   | 61.924          | 0.223       | 7441.59  | -383.83        | -389.16    | -243.35   | 40°07'52.812"N | 104°51'25.925"W | 10.00         |               |
| 7717.00†   | 71.924          | 0.223       | 7480.74  | -291.97        | -297.27    | -242.99   | 40°07'53.720"N | 104°51'25.920"W | 10.00         |               |
| 7780.22†   | 78.247          | 0.223       | 7497.00  | -230.93        | -236.21    | -242.76   | 40°07'54.324"N | 104°51'25.917"W | 10.00         | FORT HAYS     |
| 7817.00†   | 81.924          | 0.223       | 7503.33  | -194.72        | -199.99    | -242.61   | 40°07'54.682"N | 104°51'25.916"W | 10.00         |               |
| 7901.45  | 90.369          | 0.223       | 7509.00  | -110.57        | -115.81    | -242.29   | 40°07'55.514"N | 104°51'25.911"W | 10.00         | LANDING POINT |
| 7917.00†   | 90.369          | 0.223       | 7508.90  | -95.02         | -100.26    | -242.23   | 40°07'55.667"N | 104°51'25.911"W | 0.00          |               |
| 8017.00†   | 90.369          | 0.223       | 7508.26  | 4.94           | -0.26      | -241.84   | 40°07'56.655"N | 104°51'25.906"W | 0.00          |               |
| 8117.00†   | 90.369          | 0.223       | 7507.61  | 104.91         | 99.73      | -241.45   | 40°07'57.644"N | 104°51'25.901"W | 0.00          |               |
| 8217.00†   | 90.369          | 0.223       | 7506.97  | 204.88         | 199.73     | -241.06   | 40°07'58.632"N | 104°51'25.896"W | 0.00          |               |
| 8317.00†   | 90.369          | 0.223       | 7506.33  | 304.84         | 299.73     | -240.67   | 40°07'59.620"N | 104°51'25.891"W | 0.00          |               |
| 8417.00†   | 90.369          | 0.223       | 7505.68  | 404.81         | 399.73     | -240.28   | 40°08'00.608"N | 104°51'25.886"W | 0.00          |               |
| 8517.00†   | 90.369          | 0.223       | 7505.04  | 504.77         | 499.72     | -239.89   | 40°08'01.596"N | 104°51'25.881"W | 0.00          |               |
| 8617.00†   | 90.369          | 0.223       | 7504.39  | 604.74         | 599.72     | -239.50   | 40°08'02.584"N | 104°51'25.876"W | 0.00          |               |
| 8717.00†   | 90.369          | 0.223       | 7503.75  | 704.70         | 699.72     | -239.11   | 40°08'03.573"N | 104°51'25.871"W | 0.00          |               |
| 8817.00†   | 90.369          | 0.223       | 7503.11  | 804.67         | 799.71     | -238.72   | 40°08'04.561"N | 104°51'25.866"W | 0.00          |               |
| 8917.00†   | 90.369          | 0.223       | 7502.46  | 904.63         | 899.71     | -238.34   | 40°08'05.549"N | 104°51'25.861"W | 0.00          |               |
| 9017.00†   | 90.369          | 0.223       | 7501.82  | 1004.60        | 999.71     | -237.95   | 40°08'06.537"N | 104°51'25.856"W | 0.00          |               |
| 9117.00†   | 90.369          | 0.223       | 7501.17  | 1104.57        | 1099.71    | -237.56   | 40°08'07.525"N | 104°51'25.851"W | 0.00          |               |
| 9217.00†   | 90.369          | 0.223       | 7500.53  | 1204.53        | 1199.70    | -237.17   | 40°08'08.514"N | 104°51'25.846"W | 0.00          |               |
| 9317.00†   | 90.369          | 0.223       | 7499.89  | 1304.50        | 1299.70    | -236.78   | 40°08'09.502"N | 104°51'25.841"W | 0.00          |               |
| 9417.00†   | 90.369          | 0.223       | 7499.24  | 1404.46        | 1399.70    | -236.39   | 40°08'10.490"N | 104°51'25.836"W | 0.00          |               |
| 9517.00†   | 90.369          | 0.223       | 7498.60  | 1504.43        | 1499.69    | -236.00   | 40°08'11.478"N | 104°51'25.831"W | 0.00          |               |
| 9617.00†   | 90.369          | 0.223       | 7497.95  | 1604.39        | 1599.69    | -235.61   | 40°08'12.466"N | 104°51'25.826"W | 0.00          |               |
| 9717.00†   | 90.369          | 0.223       | 7497.31  | 1704.36        | 1699.69    | -235.22   | 40°08'13.454"N | 104°51'25.821"W | 0.00          |               |
| 9765.07†   | 90.369          | 0.223       | 7497.00  | 1752.41        | 1747.75    | -235.04   | 40°08'13.929"N | 104°51'25.818"W | 0.00          | FORT HAYS     |
| 9817.00†   | 90.369          | 0.223       | 7496.67  | 1804.32        | 1799.69    | -234.83   | 40°08'14.443"N | 104°51'25.816"W | 0.00          |               |
| 9917.00†   | 90.369          | 0.223       | 7496.02  | 1904.29        | 1899.68    | -234.44   | 40°08'15.431"N | 104°51'25.811"W | 0.00          |               |
| 10017.00†  | 90.369          | 0.223       | 7495.38  | 2004.26        | 1999.68    | -234.06   | 40°08'16.419"N | 104°51'25.806"W | 0.00          |               |
| 10117.00†  | 90.369          | 0.223       | 7494.73  | 2104.22        | 2099.68    | -233.67   | 40°08'17.407"N | 104°51'25.801"W | 0.00          |               |
| 10217.00†  | 90.369          | 0.223       | 7494.09  | 2204.19        | 2199.68    | -233.28   | 40°08'18.395"N | 104°51'25.796"W | 0.00          |               |
| 10317.00†  | 90.369          | 0.223       | 7493.45  | 2304.15        | 2299.67    | -232.89   | 40°08'19.384"N | 104°51'25.791"W | 0.00          |               |
| 10417.00†  | 90.369          | 0.223       | 7492.80  | 2404.12        | 2399.67    | -232.50   | 40°08'20.372"N | 104°51'25.786"W | 0.00          |               |
| 10517.00†  | 90.369          | 0.223       | 7492.16  | 2504.08        | 2499.67    | -232.11   | 40°08'21.360"N | 104°51'25.781"W | 0.00          |               |
| 10617.00†  | 90.369          | 0.223       | 7491.51  | 2604.05        | 2599.66    | -231.72   | 40°08'22.348"N | 104°51'25.776"W | 0.00          |               |
| 10717.00†  | 90.369          | 0.223       | 7490.87  | 2704.02        | 2699.66    | -231.33   | 40°08'23.336"N | 104°51'25.771"W | 0.00          |               |
| 10817.00†  | 90.369          | 0.223       | 7490.23  | 2803.98        | 2799.66    | -230.94   | 40°08'24.324"N | 104°51'25.766"W | 0.00          |               |
| 10917.00†  | 90.369          | 0.223       | 7489.58  | 2903.95        | 2899.66    | -230.55   | 40°08'25.313"N | 104°51'25.761"W | 0.00          |               |
| 11017.00†  | 90.369          | 0.223       | 7488.94  | 3003.91        | 2999.65    | -230.16   | 40°08'26.301"N | 104°51'25.756"W | 0.00          |               |
| 11117.00†  | 90.369          | 0.223       | 7488.29  | 3103.88        | 3099.65    | -229.77   | 40°08'27.289"N | 104°51'25.751"W | 0.00          |               |
| 11217.00†  | 90.369          | 0.223       | 7487.65  | 3203.84        | 3199.65    | -229.39   | 40°08'28.277"N | 104°51'25.746"W | 0.00          |               |
| 11317.00†  | 90.369          | 0.223       | 7487.01  | 3303.81        | 3299.64    | -229.00   | 40°08'29.265"N | 104°51'25.741"W | 0.00          |               |
| 11417.00†  | 90.369          | 0.223       | 7486.36  | 3403.77        | 3399.64    | -228.61   | 40°08'30.254"N | 104°51'25.736"W | 0.00          |               |
| 11517.00†  | 90.369          | 0.223       | 7485.72  | 3503.74        | 3499.64    | -228.22   | 40°08'31.242"N | 104°51'25.731"W | 0.00          |               |
| 11617.00†  | 90.369          | 0.223       | 7485.07  | 3603.71        | 3599.64    | -227.83   | 40°08'32.230"N | 104°51'25.726"W | 0.00          |               |
| 11717.00†  | 90.369          | 0.223       | 7484.43  | 3703.67        | 3699.63    | -227.44   | 40°08'33.218"N | 104°51'25.721"W | 0.00          |               |



# Planned Wellpath Report

## BARCLAY 28C-11HZ (PERMIT REV-1) PWP

Page 5 of 8



### REFERENCE WELLPATH IDENTIFICATION

|          |                                 |          |   |
|----------|---------------------------------|----------|---|
| Operator | KERR-MCGEE OIL & GAS ONSHORE LP | Slot     | SLOT#03 BARCLAY 28C-11HZ (577'FSL & 2163'FEL, SEC.14) |
| Area     | COLORADO                        | Well     | BARCLAY 28C-11HZ                                      |
| Field    | WELD COUNTY (KERR MCGEE)        | Wellbore | BARCLAY 28C-11HZ PWB                                  |
| Facility | SEC.14-T2N-R67W                 |          |   |

### WELLPATH DATA (194 stations) † = interpolated/extrapolated station

| MD [ft]   | Inclination [°] | Azimuth [°] | TVD [ft] | Vert Sect [ft] | North [ft] | East [ft] | Latitude       | Longitude       | DLS [°/100ft] | Comments |
|-----------|-----------------|-------------|----------|----------------|------------|-----------|----------------|-----------------|---------------|----------|
| 11817.00† | 90.369          | 0.223       | 7483.79  | 3803.64        | 3799.63    | -227.05   | 40°08'34.206"N | 104°51'25.716"W | 0.00          |          |
| 11917.00† | 90.369          | 0.223       | 7483.14  | 3903.60        | 3899.63    | -226.66   | 40°08'35.194"N | 104°51'25.711"W | 0.00          |          |
| 12017.00† | 90.369          | 0.223       | 7482.50  | 4003.57        | 3999.62    | -226.27   | 40°08'36.183"N | 104°51'25.706"W | 0.00          |          |
| 12117.00† | 90.369          | 0.223       | 7481.85  | 4103.53        | 4099.62    | -225.88   | 40°08'37.171"N | 104°51'25.701"W | 0.00          |          |
| 12217.00† | 90.369          | 0.223       | 7481.21  | 4203.50        | 4199.62    | -225.49   | 40°08'38.159"N | 104°51'25.696"W | 0.00          |          |
| 12317.00† | 90.369          | 0.223       | 7480.57  | 4303.47        | 4299.62    | -225.10   | 40°08'39.147"N | 104°51'25.691"W | 0.00          |          |
| 12417.00† | 90.369          | 0.223       | 7479.92  | 4403.43        | 4399.61    | -224.72   | 40°08'40.135"N | 104°51'25.686"W | 0.00          |          |
| 12517.00† | 90.369          | 0.223       | 7479.28  | 4503.40        | 4499.61    | -224.33   | 40°08'41.124"N | 104°51'25.681"W | 0.00          |          |
| 12617.00† | 90.369          | 0.223       | 7478.63  | 4603.36        | 4599.61    | -223.94   | 40°08'42.112"N | 104°51'25.676"W | 0.00          |          |
| 12717.00† | 90.369          | 0.223       | 7477.99  | 4703.33        | 4699.60    | -223.55   | 40°08'43.100"N | 104°51'25.671"W | 0.00          |          |
| 12817.00† | 90.369          | 0.223       | 7477.35  | 4803.29        | 4799.60    | -223.16   | 40°08'44.088"N | 104°51'25.666"W | 0.00          |          |
| 12917.00† | 90.369          | 0.223       | 7476.70  | 4903.26        | 4899.60    | -222.77   | 40°08'45.076"N | 104°51'25.661"W | 0.00          |          |
| 13017.00† | 90.369          | 0.223       | 7476.06  | 5003.22        | 4999.60    | -222.38   | 40°08'46.064"N | 104°51'25.656"W | 0.00          |          |
| 13117.00† | 90.369          | 0.223       | 7475.41  | 5103.19        | 5099.59    | -221.99   | 40°08'47.053"N | 104°51'25.651"W | 0.00          |          |
| 13217.00† | 90.369          | 0.223       | 7474.77  | 5203.16        | 5199.59    | -221.60   | 40°08'48.041"N | 104°51'25.646"W | 0.00          |          |
| 13317.00† | 90.369          | 0.223       | 7474.13  | 5303.12        | 5299.59    | -221.21   | 40°08'49.029"N | 104°51'25.641"W | 0.00          |          |
| 13417.00† | 90.369          | 0.223       | 7473.48  | 5403.09        | 5399.58    | -220.82   | 40°08'50.017"N | 104°51'25.636"W | 0.00          |          |
| 13517.00† | 90.369          | 0.223       | 7472.84  | 5503.05        | 5499.58    | -220.44   | 40°08'51.005"N | 104°51'25.631"W | 0.00          |          |
| 13617.00† | 90.369          | 0.223       | 7472.19  | 5603.02        | 5599.58    | -220.05   | 40°08'51.994"N | 104°51'25.626"W | 0.00          |          |
| 13717.00† | 90.369          | 0.223       | 7471.55  | 5702.98        | 5699.58    | -219.66   | 40°08'52.982"N | 104°51'25.621"W | 0.00          |          |
| 13817.00† | 90.369          | 0.223       | 7470.91  | 5802.95        | 5799.57    | -219.27   | 40°08'53.970"N | 104°51'25.616"W | 0.00          |          |
| 13917.00† | 90.369          | 0.223       | 7470.26  | 5902.92        | 5899.57    | -218.88   | 40°08'54.958"N | 104°51'25.611"W | 0.00          |          |
| 14017.00† | 90.369          | 0.223       | 7469.62  | 6002.88        | 5999.57    | -218.49   | 40°08'55.946"N | 104°51'25.606"W | 0.00          |          |
| 14117.00† | 90.369          | 0.223       | 7468.97  | 6102.85        | 6099.56    | -218.10   | 40°08'56.934"N | 104°51'25.601"W | 0.00          |          |
| 14217.00† | 90.369          | 0.223       | 7468.33  | 6202.81        | 6199.56    | -217.71   | 40°08'57.923"N | 104°51'25.596"W | 0.00          |          |
| 14317.00† | 90.369          | 0.223       | 7467.69  | 6302.78        | 6299.56    | -217.32   | 40°08'58.911"N | 104°51'25.591"W | 0.00          |          |
| 14417.00† | 90.369          | 0.223       | 7467.04  | 6402.74        | 6399.56    | -216.93   | 40°08'59.899"N | 104°51'25.586"W | 0.00          |          |
| 14517.00† | 90.369          | 0.223       | 7466.40  | 6502.71        | 6499.55    | -216.54   | 40°09'00.887"N | 104°51'25.581"W | 0.00          |          |
| 14617.00† | 90.369          | 0.223       | 7465.75  | 6602.67        | 6599.55    | -216.15   | 40°09'01.875"N | 104°51'25.576"W | 0.00          |          |
| 14717.00† | 90.369          | 0.223       | 7465.11  | 6702.64        | 6699.55    | -215.77   | 40°09'02.863"N | 104°51'25.571"W | 0.00          |          |
| 14817.00† | 90.369          | 0.223       | 7464.47  | 6802.61        | 6799.54    | -215.38   | 40°09'03.852"N | 104°51'25.566"W | 0.00          |          |
| 14917.00† | 90.369          | 0.223       | 7463.82  | 6902.57        | 6899.54    | -214.99   | 40°09'04.840"N | 104°51'25.561"W | 0.00          |          |
| 15017.00† | 90.369          | 0.223       | 7463.18  | 7002.54        | 6999.54    | -214.60   | 40°09'05.828"N | 104°51'25.556"W | 0.00          |          |
| 15117.00† | 90.369          | 0.223       | 7462.53  | 7102.50        | 7099.54    | -214.21   | 40°09'06.816"N | 104°51'25.551"W | 0.00          |          |
| 15217.00† | 90.369          | 0.223       | 7461.89  | 7202.47        | 7199.53    | -213.82   | 40°09'07.804"N | 104°51'25.546"W | 0.00          |          |
| 15317.00† | 90.369          | 0.223       | 7461.25  | 7302.43        | 7299.53    | -213.43   | 40°09'08.793"N | 104°51'25.541"W | 0.00          |          |
| 15417.00† | 90.369          | 0.223       | 7460.60  | 7402.40        | 7399.53    | -213.04   | 40°09'09.781"N | 104°51'25.536"W | 0.00          |          |
| 15517.00† | 90.369          | 0.223       | 7459.96  | 7502.37        | 7499.53    | -212.65   | 40°09'10.769"N | 104°51'25.531"W | 0.00          |          |
| 15617.00† | 90.369          | 0.223       | 7459.31  | 7602.33        | 7599.52    | -212.26   | 40°09'11.757"N | 104°51'25.526"W | 0.00          |          |
| 15717.00† | 90.369          | 0.223       | 7458.67  | 7702.30        | 7699.52    | -211.87   | 40°09'12.745"N | 104°51'25.521"W | 0.00          |          |
| 15817.00† | 90.369          | 0.223       | 7458.03  | 7802.26        | 7799.52    | -211.49   | 40°09'13.733"N | 104°51'25.516"W | 0.00          |          |
| 15917.00† | 90.369          | 0.223       | 7457.38  | 7902.23        | 7899.51    | -211.10   | 40°09'14.722"N | 104°51'25.511"W | 0.00          |          |
| 16017.00† | 90.369          | 0.223       | 7456.74  | 8002.19        | 7999.51    | -210.71   | 40°09'15.710"N | 104°51'25.506"W | 0.00          |          |
| 16117.00† | 90.369          | 0.223       | 7456.09  | 8102.16        | 8099.51    | -210.32   | 40°09'16.698"N | 104°51'25.501"W | 0.00          |          |
| 16217.00† | 90.369          | 0.223       | 7455.45  | 8202.12        | 8199.51    | -209.93   | 40°09'17.686"N | 104°51'25.496"W | 0.00          |          |



# Planned Wellpath Report

## BARCLAY 28C-11HZ (PERMIT REV-1) PWP

Page 6 of 8



### REFERENCE WELLPATH IDENTIFICATION

|          |                                 |          |   |
|----------|---------------------------------|----------|---|
| Operator | KERR-MCGEE OIL & GAS ONSHORE LP | Slot     | SLOT#03 BARCLAY 28C-11HZ (577'FSL & 2163'FEL, SEC.14) |
| Area     | COLORADO                        | Well     | BARCLAY 28C-11HZ                                      |
| Field    | WELD COUNTY (KERR MCGEE)        | Wellbore | BARCLAY 28C-11HZ PWB                                  |
| Facility | SEC.14-T2N-R67W                 |          |   |

### WELLPATH DATA (194 stations) † = interpolated/extrapolated station

| MD [ft]   | Inclination [°] | Azimuth [°] | TVD [ft]             | Vert Sect [ft] | North [ft] | East [ft] | Latitude       | Longitude       | DLS [°/100ft] | Comments    |
|-----------|-----------------|-------------|----------------------|----------------|------------|-----------|----------------|-----------------|---------------|-------------|
| 16317.00† | 90.369          | 0.223       | 7454.81              | 8302.09        | 8299.50    | -209.54   | 40°09'18.674"N | 104°51'25.491"W | 0.00          |             |
| 16417.00† | 90.369          | 0.223       | 7454.16              | 8402.06        | 8399.50    | -209.15   | 40°09'19.663"N | 104°51'25.486"W | 0.00          |             |
| 16517.00† | 90.369          | 0.223       | 7453.52              | 8502.02        | 8499.50    | -208.76   | 40°09'20.651"N | 104°51'25.481"W | 0.00          |             |
| 16617.00† | 90.369          | 0.223       | 7452.88              | 8601.99        | 8599.49    | -208.37   | 40°09'21.639"N | 104°51'25.476"W | 0.00          |             |
| 16717.00† | 90.369          | 0.223       | 7452.23              | 8701.95        | 8699.49    | -207.98   | 40°09'22.627"N | 104°51'25.471"W | 0.00          |             |
| 16817.00† | 90.369          | 0.223       | 7451.59              | 8801.92        | 8799.49    | -207.59   | 40°09'23.615"N | 104°51'25.466"W | 0.00          |             |
| 16917.00† | 90.369          | 0.223       | 7450.94              | 8901.88        | 8899.49    | -207.20   | 40°09'24.603"N | 104°51'25.461"W | 0.00          |             |
| 17017.00† | 90.369          | 0.223       | 7450.30              | 9001.85        | 8999.48    | -206.82   | 40°09'25.592"N | 104°51'25.456"W | 0.00          |             |
| 17117.00† | 90.369          | 0.223       | 7449.66              | 9101.81        | 9099.48    | -206.43   | 40°09'26.580"N | 104°51'25.451"W | 0.00          |             |
| 17217.00† | 90.369          | 0.223       | 7449.01              | 9201.78        | 9199.48    | -206.04   | 40°09'27.568"N | 104°51'25.446"W | 0.00          |             |
| 17317.00† | 90.369          | 0.223       | 7448.37              | 9301.75        | 9299.47    | -205.65   | 40°09'28.556"N | 104°51'25.441"W | 0.00          |             |
| 17417.00† | 90.369          | 0.223       | 7447.72              | 9401.71        | 9399.47    | -205.26   | 40°09'29.544"N | 104°51'25.436"W | 0.00          |             |
| 17517.00† | 90.369          | 0.223       | 7447.08              | 9501.68        | 9499.47    | -204.87   | 40°09'30.532"N | 104°51'25.431"W | 0.00          |             |
| 17529.30  | 90.369          | 0.223       | 7447.00 <sup>†</sup> | 9513.97        | 9511.77    | -204.82   | 40°09'30.654"N | 104°51'25.430"W | 0.00          | TOTAL DEPTH |

### HOLE & CASING SECTIONS - Ref Wellbore: BARCLAY 28C-11HZ PWB    Ref Wellpath: BARCLAY 28C-11HZ (PERMIT REV-1) PWP

| String/Diameter         | Start MD [ft] | End MD [ft] | Interval [ft] | Start TVD [ft] | End TVD [ft] | Start N/S [ft] | Start E/W [ft] | End N/S [ft] | End E/W [ft] |
|-------------------------|---------------|-------------|---------------|----------------|--------------|----------------|----------------|--------------|--------------|
| 13.5in Open Hole        | 17.00         | 1100.00     | 1083.00       | 17.00          | 1100.00      | 0.00           | 0.00           | 0.00         | 0.00         |
| 9.625in Casing Surface  | 17.00         | 1100.00     | 1083.00       | 17.00          | 1100.00      | 0.00           | 0.00           | 0.00         | 0.00         |
| 8.75in Open Hole        | 1100.00       | 7901.45     | 6801.45       | 1100.00        | 7509.00      | 0.00           | 0.00           | -115.81      | -242.29      |
| 7in Casing Intermediate | 17.00         | 7901.45     | 7884.45       | 17.00          | 7509.00      | 0.00           | 0.00           | -115.81      | -242.29      |
| 6.125in Open Hole       | 7901.45       | 17529.30    | 9627.85       | 7509.00        | 7447.00      | -115.81        | -242.29        | 9511.77      | -204.82      |
| 4.5in Casing Production | 17.00         | 17529.30    | 17512.30      | 17.00          | 7447.00      | 0.00           | 0.00           | 9511.77      | -204.82      |



# Planned Wellpath Report

## BARCLAY 28C-11HZ (PERMIT REV-1) PWP

Page 7 of 8



### REFERENCE WELLPATH IDENTIFICATION

|          |                                 |          |   |
|----------|---------------------------------|----------|---|
| Operator | KERR-MCGEE OIL & GAS ONSHORE LP | Slot     | SLOT#03 BARCLAY 28C-11HZ (577'FSL & 2163'FEL, SEC.14) |
| Area     | COLORADO                        | Well     | BARCLAY 28C-11HZ                                      |
| Field    | WELD COUNTY (KERR MCGEE)        | Wellbore | BARCLAY 28C-11HZ PWB                                  |
| Facility | SEC.14-T2N-R67W                 |          |   |

### TARGETS

| Name   | MD [ft]  | TVD [ft] | North [ft] | East [ft] | Grid East [US ft] | Grid North [US ft] | Latitude       | Longitude       | Shape   |
|--|----------|----------|------------|-----------|-------------------|--------------------|----------------|-----------------|---------|
| SEC.11-T2N-R67W SECTION LINES                                |          | 0.00     | 0.00       | 0.00      | 3179974.47        | 1291732.06         | 40°07'56.658"N | 104°51'22.792"W | polygon |
| SEC.14-T2N-R67W SECTION LINES                                |          | 0.00     | -3.13      | 454.00    | 3180428.45        | 1291732.23         | 40°07'56.627"N | 104°51'16.947"W | polygon |
| SEC.11-T2N-R67W HARDLINES (460' SETBACK)                     |          | 7353.00  | 0.00       | 0.00      | 3179974.47        | 1291732.06         | 40°07'56.658"N | 104°51'22.792"W | polygon |
| SEC.14-T2N-R67W HARDLINES (460' SETBACK)                     |          | 7353.00  | -3.13      | 454.00    | 3180428.45        | 1291732.23         | 40°07'56.627"N | 104°51'16.947"W | polygon |
| 1) BARCLAY 28C-11HZ BHL ON PLAT (460'FNL & 2405'FEL, SEC.11) | 17529.30 | 7447.00  | 9511.77    | -204.82   | 3179700.62        | 1301241.68         | 40°09'30.654"N | 104°51'25.430"W | point   |
| BARCLAY 28C-11HZ LANDBOX                                     |          | 7447.00  | 0.00       | 0.00      | 3179974.47        | 1291732.06         | 40°07'56.658"N | 104°51'22.792"W | polygon |

### SURVEY PROGRAM - Ref Wellbore: BARCLAY 28C-11HZ PWB    Ref Wellpath: BARCLAY 28C-11HZ (PERMIT REV-1) PWP

| Start MD [ft] | End MD [ft] | Positional Uncertainty Model | Log Name/Comment | Wellbore             |
|---------------|-------------|------------------------------|------------------|----------------------|
| 17.00         | 7901.45     | NaviTrak (Standard)          |                  | BARCLAY 28C-11HZ PWB |
| 7901.45       | 17529.30    | OnTrak (Standard)            |                  | BARCLAY 28C-11HZ PWB |



# Planned Wellpath Report

## BARCLAY 28C-11HZ (PERMIT REV-1) PWP

Page 8 of 8



### REFERENCE WELLPATH IDENTIFICATION

|          |                                 |          |   |
|----------|---------------------------------|----------|---|
| Operator | KERR-MCGEE OIL & GAS ONSHORE LP | Slot     | SLOT#03 BARCLAY 28C-11HZ (577'FSL & 2163'FEL, SEC.14) |
| Area     | COLORADO                        | Well     | BARCLAY 28C-11HZ                                      |
| Field    | WELD COUNTY (KERR MCGEE)        | Wellbore | BARCLAY 28C-11HZ PWB                                  |
| Facility | SEC.14-T2N-R67W                 |          |   |

### WELLPATH COMMENTS

| MD [ft] | Inclination [°] | Azimuth [°] | TVD [ft] | Comment          |
|---------|-----------------|-------------|----------|------------------|
| 991.00  | 0.000           | 199.450     | 991.00   | FOX HILLS BASE   |
| 4078.18 | 10.000          | 199.450     | 4038.00  | PARKMAN          |
| 4501.62 | 10.000          | 199.450     | 4455.00  | SUSSEX           |
| 6563.00 | 0.000           | 0.223       | 6501.30  | 4 1/2" LINER TOP |
| 7251.96 | 25.420          | 0.223       | 7182.00  | SHARON SPRINGS   |
| 7330.01 | 33.226          | 0.223       | 7250.00  | NIOBRARA A       |
| 7371.69 | 37.393          | 0.223       | 7284.00  | NIOBRARA B       |
| 7488.56 | 49.081          | 0.223       | 7369.00  | NIOBRARA C       |
| 7780.22 | 78.247          | 0.223       | 7497.00  | FORT HAYS        |
| 9765.07 | 90.369          | 0.223       | 7497.00  | FORT HAYS        |

### DESIGN COMMENTS

| MD [ft]  | Inclination [°] | Azimuth [°] | TVD [ft] | Comment               |
|----------|-----------------|-------------|----------|-----------------------|
| 17.00    | 0.000           | 199.450     | 17.00    | TIE ON                |
| 1100.00  | 0.000           | 199.450     | 1100.00  | BEGIN NUDGE           |
| 1600.00  | 10.000          | 199.450     | 1597.47  | END NUDGE             |
| 5327.76  | 10.000          | 199.450     | 5268.59  | BEGIN DROP            |
| 5827.76  | 0.000           | 0.223       | 5766.06  | END DROP              |
| 6997.76  | 0.000           | 0.223       | 6936.06  | KOP, BUILD @ 10°/100' |
| 7901.45  | 90.369          | 0.223       | 7509.00  | LANDING POINT         |
| 17529.30 | 90.369          | 0.223       | 7447.00  | TOTAL DEPTH           |