

# WPX Energy Rocky Mountain, LLC

## T6S, R96W, 6th P.M.

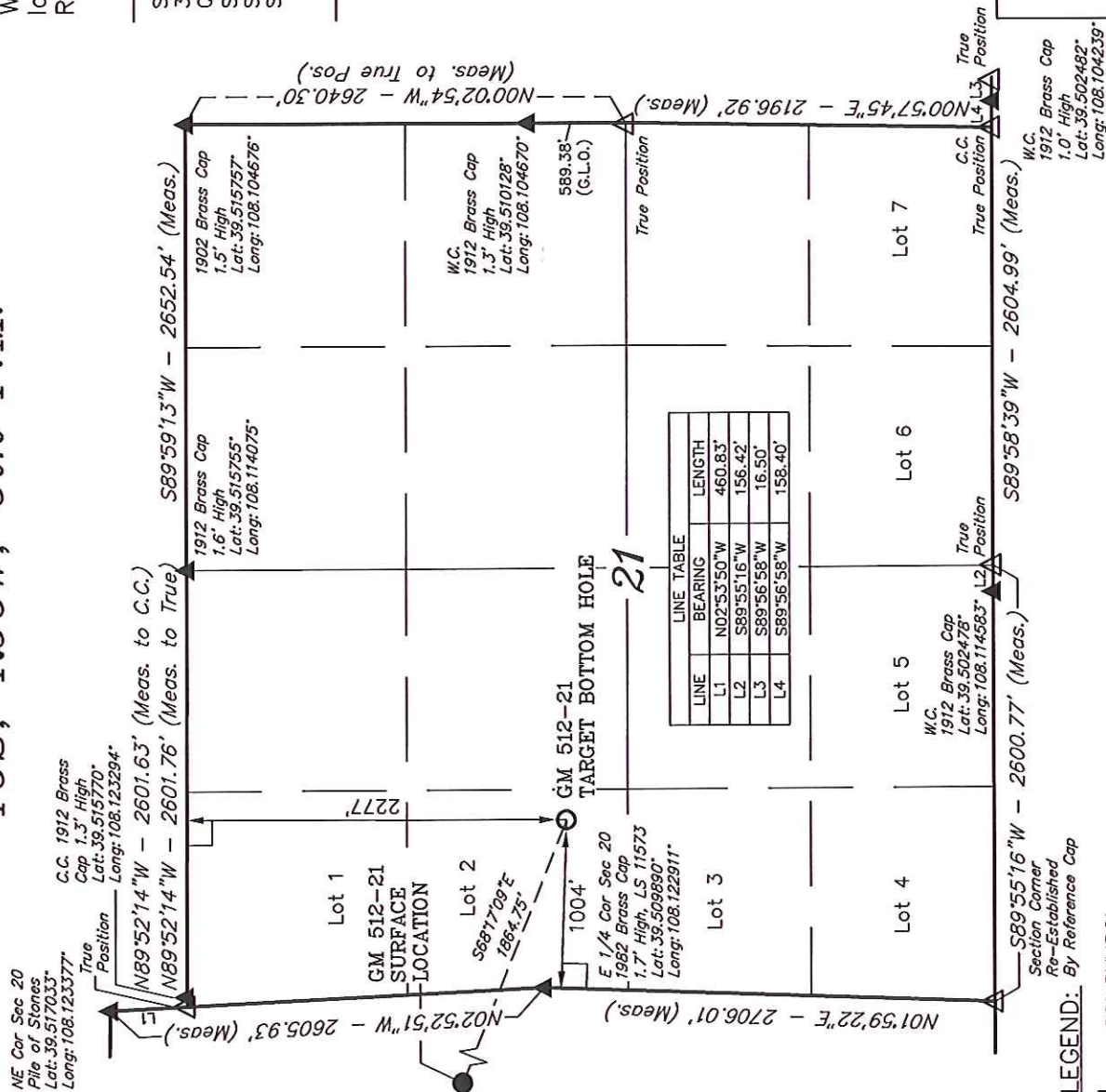
Well location, GM 512-21 (TARGET BOTTOM HOLE), located as shown in Lot 2 of Section 21, T6S, R96W, 6th P.M., Garfield County, Colorado.

### BASIS OF ELEVATION

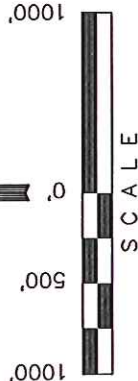
SPOT ELEVATION AT THE NORTHWEST CORNER OF SECTION 30, T5S, R95W, 6th P.M. TAKEN FROM THE FORKED GULCH QUADRANGLE, COLORADO, GARFIELD COUNTY, 7.5 MINUTE SERIES (TOPOGRAPHICAL MAP) PUBLISHED BY THE UNITED STATES DEPARTMENT OF THE INTERIOR, GEOLOGICAL SURVEY. SAID ELEVATION IS MARKED AS BEING 5966 FEET.

### BASIS OF BEARINGS

BASIS OF BEARINGS IS A G.P.S. OBSERVATION.



LINE	BEARING	LENGTH
L1	N02°53'50\"W	460.83'
L2	S89°55'16\"W	156.42'
L3	S89°56'58\"W	16.50'
L4	S89°56'58\"W	158.40'



### CERTIFICATE

THIS IS TO CERTIFY THAT THE ABOVE PLAT WAS PREPARED AND LOCATION AS SHOWN WAS STAKED ON THE GROUND FROM FIELD NOTES OF ACTUAL SURVEYS MADE BY ME OR UNDER MY SUPERVISION AND THAT THE SAME ARE TRUE AND CORRECT TO THE BEST OF MY KNOWLEDGE AND BELIEF.

REGISTERED LAND SURVEYOR  
REGISTRATION NO. 17492  
STATE OF COLORADO  
08-29-2012

UNTAH ENGINEERING & LAND SURVEYING  
85 SOUTH 200 EAST - VERNAL, UTAH 84078  
(435) 789-1017

SCALE 1" = 1000'	DATE SURVEYED: 08-15-12	DATE DRAWN: 08-29-12
PARTY B.B. R.B. M.D.	REFERENCES G.L.O. PLAT	
WEATHER WARM	FILE	
		WPX ENERGY ROCKY MOUNTAIN, LLC

NAD 83 (TARGET BOTTOM HOLE)
LATITUDE = 39°30'34.25" (39.509514)
LONGITUDE = 108°07'09.73" (108.119369)
STATE PLANE - (COLO. CENTRAL - NAD83)
N = 1621122.848
E = 2261057.029

### LEGEND:

- = 90° SYMBOL
- = PROPOSED WELL HEAD.
- ▲ = SECTION CORNERS LOCATED.
- △ = SECTION CORNERS RE-EST.
- (Not Set on Ground)