

# WPX Energy Rocky Mountain, LLC

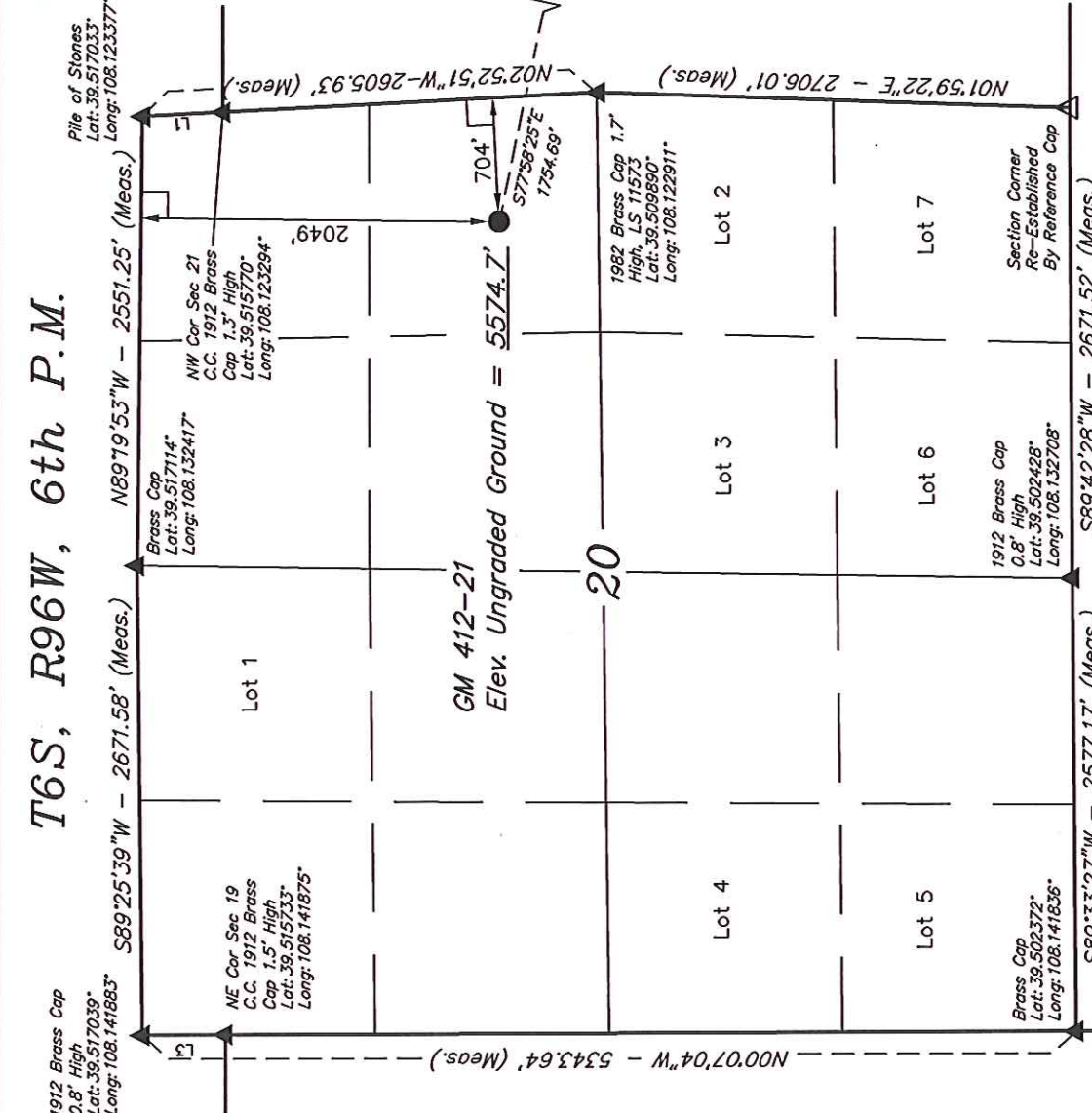
Well location, GM 412-21 (SURFACE LOCATION), located as shown in the SE 1/4 NE 1/4 of Section 20, T6S, R96W, 6th P.M., Garfield County, Colorado.

## BASIS OF ELEVATION

SPOT ELEVATION AT THE NORTHWEST CORNER OF SECTION 30, T5S, R95W, 6th P.M. TAKEN FROM THE FORKED GULCH QUADRANGLE, COLORADO, GARFIELD COUNTY, 7.5 MINUTE SERIES (TOPOGRAPHICAL MAP) PUBLISHED BY THE UNITED STATES DEPARTMENT OF THE INTERIOR, GEOLOGICAL SURVEY. SAID ELEVATION IS MARKED AS BEING 5966 FEET.

## BASIS OF BEARINGS

BASIS OF BEARINGS IS A G.P.S. OBSERVATION.



**CERTIFICATE**

THIS IS TO CERTIFY THAT THE ABOVE PLAT WAS PREPARED AND LOCATION AS SHOWN WAS STAKED ON THE GROUND FROM FIELD NOTES OF ACTUAL SURVEYS MADE BY ME OR UNDER MY CLOSE SUPERVISION AND THAT THE SAME ARE TRUE AND CORRECT TO THE BEST OF MY KNOWLEDGE AND BELIEF.

*[Signature]*

REGISTERED LAND SURVEYOR  
REGISTRATION NO. 172492  
STATE OF COLORADO  
08-19-13

REVISED: 10-14-13

**UNTAH ENGINEERING & LAND SURVEYING**

85 SOUTH 200 EAST - VERNAL, UTAH 84078  
(435) 789-1017

DATE SURVEYED: 08-15-12  
DATE DRAWN: 08-29-12

SCALE: 1" = 1000'  
PARTY: B.B. R.B. M.D.  
REFERENCES: G.L.O. PLAT  
WEATHER: WARM  
FILE: WPX ENERGY ROCKY MOUNTAIN, LLC

NOTE: SEE CURRENT FOOTAGE PLAT #6 FOR EXISTING IMPROVEMENT WITHIN 500' OF THE PROPOSED WELL HEAD.

LINE TABLE		
LINE	DIRECTION	LENGTH
L1	N02°53'50"W	460.83'
L2	N00°13'35"E	402.06'
L3	N00°16'05"W	475.52'

- LEGEND:**
- └─ = 90° SYMBOL
  - = PROPOSED WELL HEAD.
  - ▲ = SECTION CORNERS LOCATED.
  - △ = SECTION CORNERS RE-EST. (Not Set on Ground)

PDOP = 1.2

NAD 83 (SURFACE LOCATION)  
LATITUDE = 39°30'41.14" (39.511428)  
LONGITUDE = 108°07'31.83" (108.125508)  
STATE PLANE - (GOLD. CENTRAL-NAD83)  
N = 1621869.656  
E = 2259345.830

# WPX Energy Rocky Mountain, LLC

## T6S, R96W, 6th P.M.

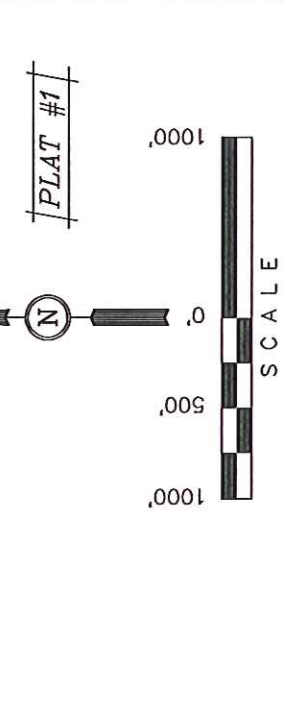
Well location, GM 412-21 (TARGET BOTTOM HOLE), located as shown in Lot 2 of Section 21, T6S, R96W, 6th P.M., Garfield County, Colorado.

**BASIS OF ELEVATION**

SPOT ELEVATION AT THE NORTHWEST CORNER OF SECTION 30, T5S, R95W, 6th P.M. TAKEN FROM THE FORKED GULCH QUADRANGLE, COLORADO, GARFIELD COUNTY, 7.5 MINUTE SERIES (TOPOGRAPHICAL MAP) PUBLISHED BY THE UNITED STATES DEPARTMENT OF THE INTERIOR, GEOLOGICAL SURVEY. SAID ELEVATION IS MARKED AS BEING 5966 FEET.

**BASIS OF BEARINGS**

BASIS OF BEARINGS IS A G.P.S. OBSERVATION.



**CERTIFICATE**

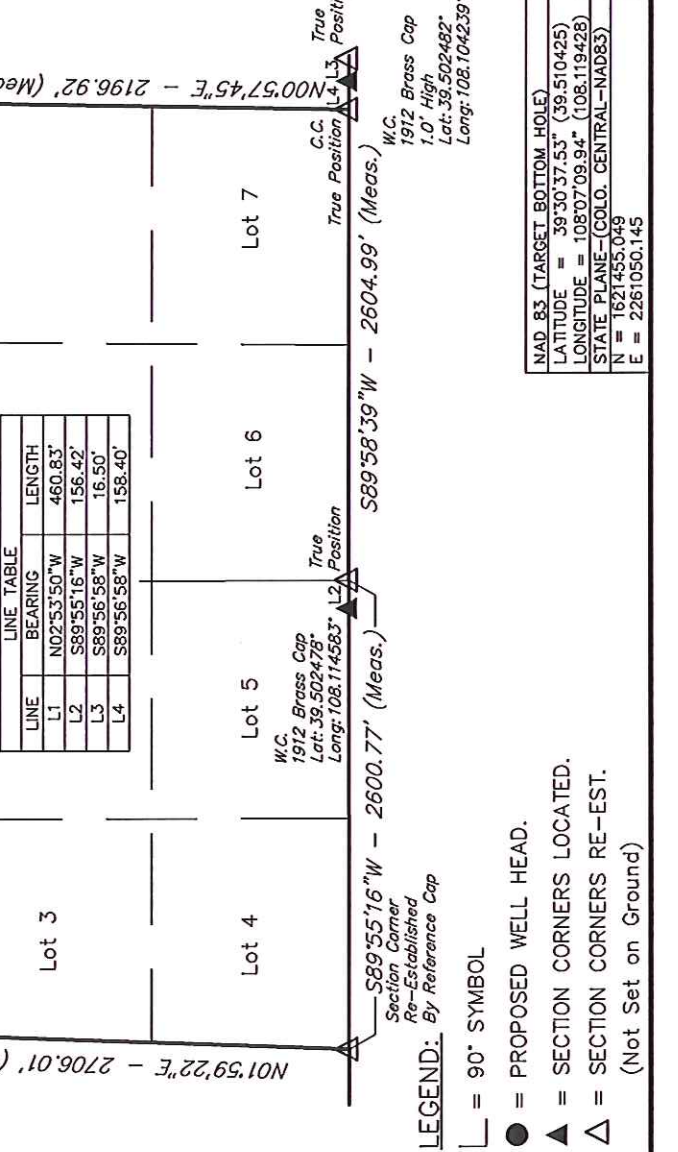
THIS IS TO CERTIFY THAT THE ABOVE PLAT WAS PREPARED AND LOCATION AS SHOWN WAS STAKED ON THE GROUND FROM FIELD NOTES OF ACTUAL SURVEYS MADE BY ME OR UNDER MY SUPERVISION AND THAT THE SAME ARE TRUE AND CORRECT TO THE BEST OF MY KNOWLEDGE AND BELIEF.

*[Signature]*  
 REGISTERED LAND SURVEYOR  
 REGISTRATION NO. 17492  
 STATE OF COLORADO  
 08-29-2012

**UINTAH ENGINEERING & LAND SURVEYING**  
 85 SOUTH 200 EAST - VERNAL, UTAH 84078  
 (435) 789-1017

SCALE: 1" = 1000'  
 DATE SURVEYED: 08-15-12  
 DATE DRAWN: 08-29-12

PARTY: B.B. R.B. M.D. G.L.O. PLAT  
 WEATHER: WARM  
 FILE: WPX ENERGY ROCKY MOUNTAIN, LLC



NE Cor Sec 20  
 Pile of Stones  
 Lat: 39.517033°  
 Long: 108.123377°

True Position  
 N89°52'14"W - 2601.63' (Meas. to C.C.)  
 N89°52'14"W - 2601.76' (Meas. to True)

1912 Brass Cap  
 1.6' High  
 Lat: 39.515755°  
 Long: 108.114075°

1902 Brass Cap  
 1.5' High  
 Lat: 39.515757°  
 Long: 108.104676°

W.C.  
 1912 Brass Cap  
 1.3' High  
 Lat: 39.510128°  
 Long: 108.104670°

589.38' (G.L.O.)

True Position

N00°57'45"E - 2196.92' (Meas.)

True Position

N00°57'45"E - 2640.30' (Meas. to True Pos.)

W.C.  
 1912 Brass Cap  
 1.0' High  
 Lat: 39.502492°  
 Long: 108.104239°

True Position

W.C.  
 1912 Brass Cap  
 Lat: 39.502478°  
 Long: 108.114583°

True Position

S89°55'16"W - 2600.77' (Meas.)

S89°58'39"W - 2604.99' (Meas.)

W.C.  
 1912 Brass Cap  
 Lat: 39.502478°  
 Long: 108.114583°

True Position

N01°59'22"E - 2706.01' (Meas.)

Section Corner  
 Re-Established  
 By Reference Cap

Legend:  
 L = 90° SYMBOL  
 ● = PROPOSED WELL HEAD.  
 ▲ = SECTION CORNERS LOCATED.  
 △ = SECTION CORNERS RE-EST.  
 (Not Set on Ground)

NAD 83 (TARGET BOTTOM HOLE)  
 LATITUDE = 39°30'37.53" (39.510425)  
 LONGITUDE = 108°07'09.94" (108.119428)  
 STATE PLANE - (COLO. CENTRAL - NAD83)  
 N = 1821455.049  
 E = 2261050.145