

# WPX Energy Rocky Mountain, LLC

# T6S, R96W, 6th P.M.

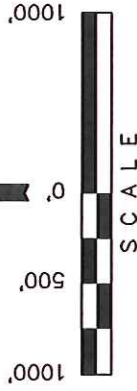
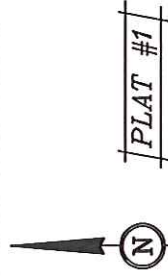
Well location, GM 411-21 (SURFACE LOCATION), located as shown in the SE 1/4 NE 1/4 of Section 20, T6S, R96W, 6th P.M., Garfield County, Colorado.

**BASIS OF ELEVATION**  
SPOT ELEVATION AT THE NORTHWEST CORNER OF SECTION 30, T5S, R95W, 6th P.M. TAKEN FROM THE FORKED GULCH QUADRANGLE, COLORADO, GARFIELD COUNTY, 7.5 MINUTE SERIES (TOPOGRAPHICAL MAP) PUBLISHED BY THE UNITED STATES DEPARTMENT OF THE INTERIOR, GEOLOGICAL SURVEY. SAID ELEVATION IS MARKED AS BEING 5966 FEET.

### BASIS OF BEARINGS

BASIS OF BEARINGS IS A G.P.S. OBSERVATION.

GM 411-21  
TARGET BOTTOM  
HOLE



### CERTIFICATE

THIS IS TO CERTIFY THAT THE ABOVE PLAT WAS PREPARED AND LOCATION AS SHOWN WAS STAKED ON THE GROUND FROM FIELD NOTES OF ACTUAL SURVEYS MADE BY ME OR UNDER MY CLOSE SUPERVISION AND THAT THE SAME ARE TRUE AND CORRECT TO THE BEST OF MY KNOWLEDGE AND BELIEF.

REGISTERED LAND SURVEYOR  
REGISTRATION NO. 17492  
STATE OF COLORADO  
OF 90-14-13

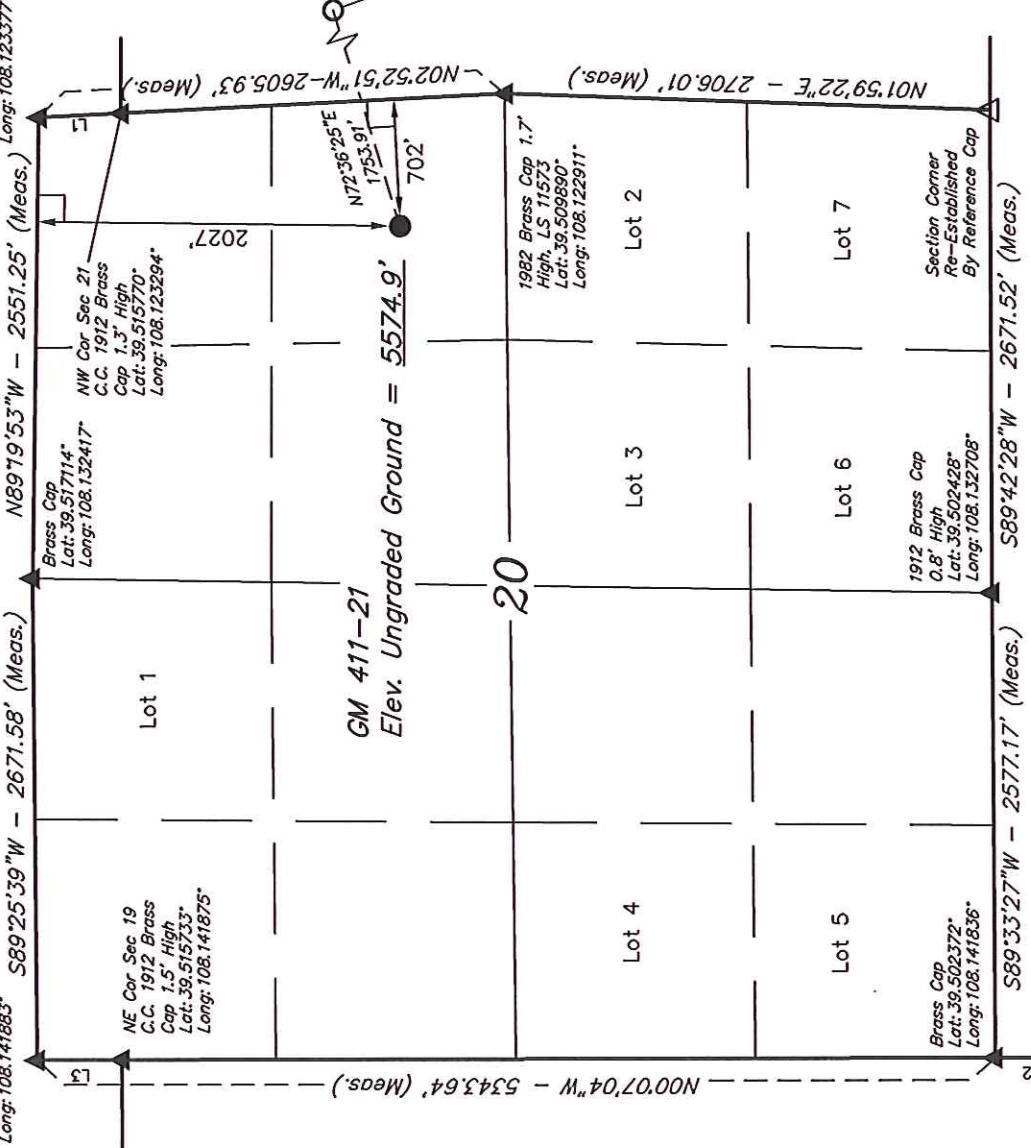
REVISED: 10-14-13

## UNTAH ENGINEERING & LAND SURVEYING

85 SOUTH 200 EAST - VERNAL, UTAH 84078  
(435) 789-1017

SCALE 1" = 1000'	DATE SURVEYED: 08-15-12	DATE DRAWN: 08-29-12
PARTY B.B. R.B. M.D.	REFERENCES G.L.O. PLAT	
WEATHER WARM	FILE	

Pile of Stones  
Lat: 39.517033°  
Long: 108.123377°



NOTE:  
SEE CURRENT FOOTAGE PLAT #6 FOR  
EXISTING IMPROVEMENT WITHIN 500'  
OF THE PROPOSED WELL HEAD.

LINE	DIRECTION	LENGTH
L1	N02°53'50"W	460.83'
L2	N00°13'35"E	402.06'
L3	N00°16'05"W	475.52'

### LEGEND:

- ┌ = 90° SYMBOL
- = PROPOSED WELL HEAD.
- ▲ = SECTION CORNERS LOCATED.
- △ = SECTION CORNERS RE-EST.  
(Not Set on Ground)

PDOP = 1.3  
NAD 83 (SURFACE LOCATION)  
LATITUDE = 39°30'41.36" (39.511489)  
LONGITUDE = 108°07'31.83" (108.125508)  
STATE PLANE - (COLO. CENTRAL - NAD83)  
N = 1621891.916  
E = 2259346.474

# WPX Energy Rocky Mountain, LLC

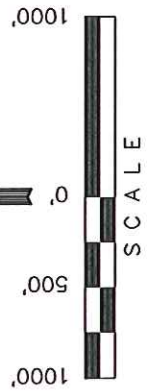
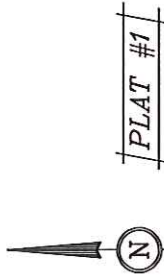
Well location, GM 411-21 (TARGET BOTTOM HOLE), located as shown in Lot 1 of Section 21, T6S, R96W, 6th P.M., Garfield County, Colorado.

## BASIS OF ELEVATION

SPOT ELEVATION AT THE NORTHWEST CORNER OF SECTION 30, T5S, R95W, 6th P.M. TAKEN FROM THE FORKED GULCH QUADRANGLE, COLORADO, GARFIELD COUNTY, 7.5 MINUTE SERIES (TOPOGRAPHICAL MAP) PUBLISHED BY THE UNITED STATES DEPARTMENT OF THE INTERIOR, GEOLOGICAL SURVEY. SAID ELEVATION IS MARKED AS BEING 5966 FEET.

## BASIS OF BEARINGS

BASIS OF BEARINGS IS A G.P.S. OBSERVATION.



## CERTIFICATE

THIS IS TO CERTIFY THAT THE ABOVE PLAT WAS PREPARED AND LOCATION AS SHOWN WAS STAKED ON THE GROUND FROM FIELD NOTES OF ACTUAL SURVEYS MADE BY ME OR UNDER MY SUPERVISION AND THAT THE SAME ARE TRUE AND CORRECT TO THE BEST OF MY KNOWLEDGE AND BELIEF.

*[Signature]*  
 REGISTERED LAND SURVEYOR  
 REGISTRATION NO. 172422  
 STATE OF COLORADO  
 08-29-2012

## UINTAH ENGINEERING & LAND SURVEYING

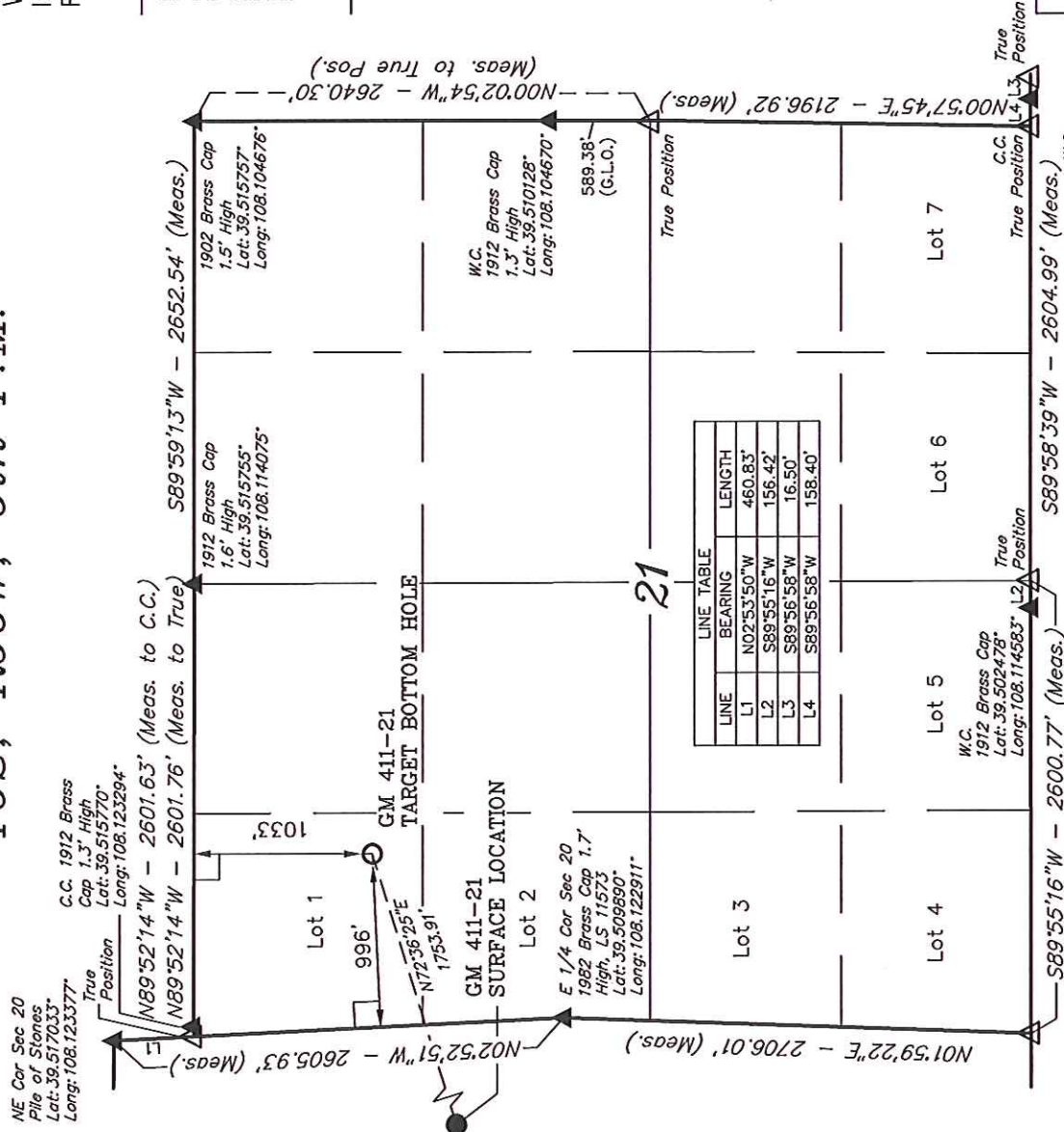
85 SOUTH 200 EAST - VERNAL, UTAH 84078  
 (435) 789-1017

SCALE 1" = 1000' DATE SURVEYED: 08-15-12 DATE DRAWN: 08-29-12

PARTY B.B. R.B. M.D. REFERENCES G.L.O. PLAT

WEATHER WARM FILE WPX ENERGY ROCKY MOUNTAIN, LLC

# T6S, R96W, 6th P.M.



- LEGEND:** By Reference Cap
- = 90° SYMBOL
  - = PROPOSED WELL HEAD.
  - ▲ = SECTION CORNERS LOCATED.
  - △ = SECTION CORNERS RE-EST. (Not Set on Ground)

NAD 83 (TARGET BOTTOM HOLE)  
 LATITUDE = 39°30'46.54" (39.512928)  
 LONGITUDE = 108°07'10.48" (108.119578)  
 STATE PLANE—(COLO. CENTRAL—NAD83)  
 N = 1822367.505  
 E = 2261034.124