

WPX Energy Rocky Mountain, LLC

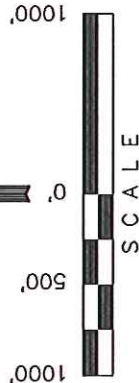
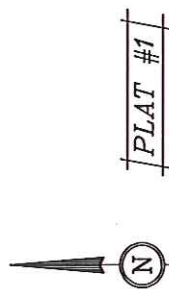
Well location, GM 312-21 (TARGET BOTTOM HOLE), located as shown in Lot 2 of Section 21, T6S, R96W, 6th P.M., Garfield County, Colorado.

BASIS OF ELEVATION

SPOT ELEVATION AT THE NORTHWEST CORNER OF SECTION 30, T5S, R95W, 6th P.M. TAKEN FROM THE FORKED GULCH QUADRANGLE, COLORADO, GARFIELD COUNTY, 7.5 MINUTE SERIES (TOPOGRAPHICAL MAP) PUBLISHED BY THE UNITED STATES DEPARTMENT OF THE INTERIOR, GEOLOGICAL SURVEY. SAID ELEVATION IS MARKED AS BEING 5966 FEET.

BASIS OF BEARINGS

BASIS OF BEARINGS IS A G.P.S. OBSERVATION.



CERTIFICATE

THIS IS TO CERTIFY THAT THE ABOVE PLAT WAS PREPARED AND LOCATION AS SHOWN WAS STAKED ON THE GROUND FROM FIELD NOTES OF ACTUAL SURVEYS MADE BY ME OR UNDER MY CLOSE SUPERVISION AND THAT THE SAME ARE TRUE AND CORRECT TO THE BEST OF MY KNOWLEDGE AND BELIEF.

REGISTERED AND SURVEYOR
REGISTRATION NO. 17492
STATE OF COLORADO
08-29-2012

UNTAN ENGINEERING & LAND SURVEYING

85 SOUTH 200 EAST - VERNAL, UTAH 84078

(435) 789-1017

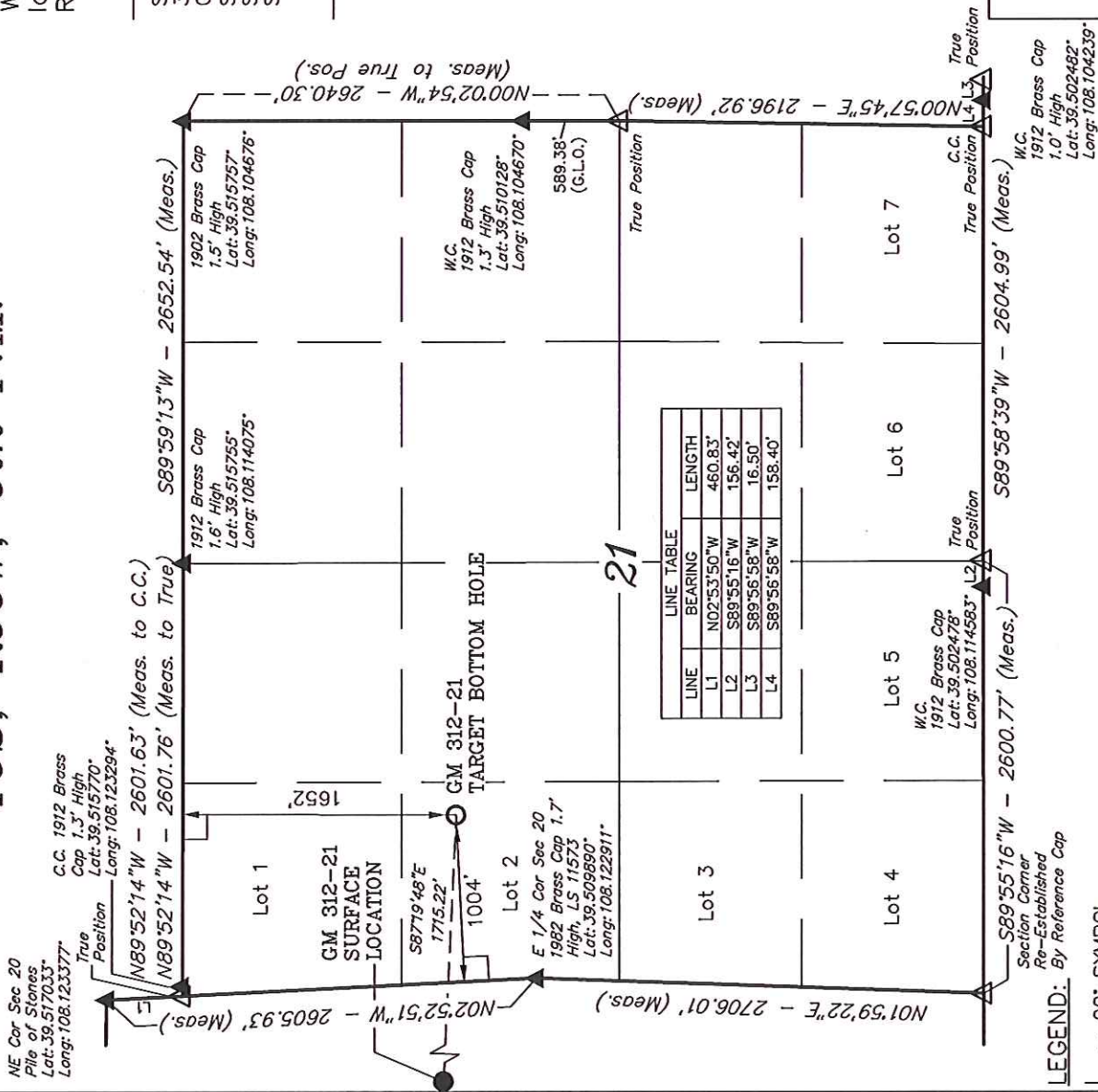
SCALE 1" = 1000' DATE SURVEYED: 08-15-12 DATE DRAWN: 08-29-12

PARTY B.B. R.B. M.D. REFERENCES G.L.O. PLAT

WEATHER WARM FILE

WPX ENERGY ROCKY MOUNTAIN, LLC

T6S, R96W, 6th P.M.



LEGEND: By Reference Cap

- = 90° SYMBOL
- = PROPOSED WELL HEAD.
- ▲ = SECTION CORNERS LOCATED.
- △ = SECTION CORNERS RE-EST.

(Not Set on Ground)

NAD 83 (TARGET BOTTOM HOLE)
LATITUDE = 39°30'40.43" (39.511231)
LONGITUDE = 108°07'09.97" (108.119436)
STATE PLANE - (COLO. CENTRAL - NAD83)
N = 1621748.411
E = 2261056.254