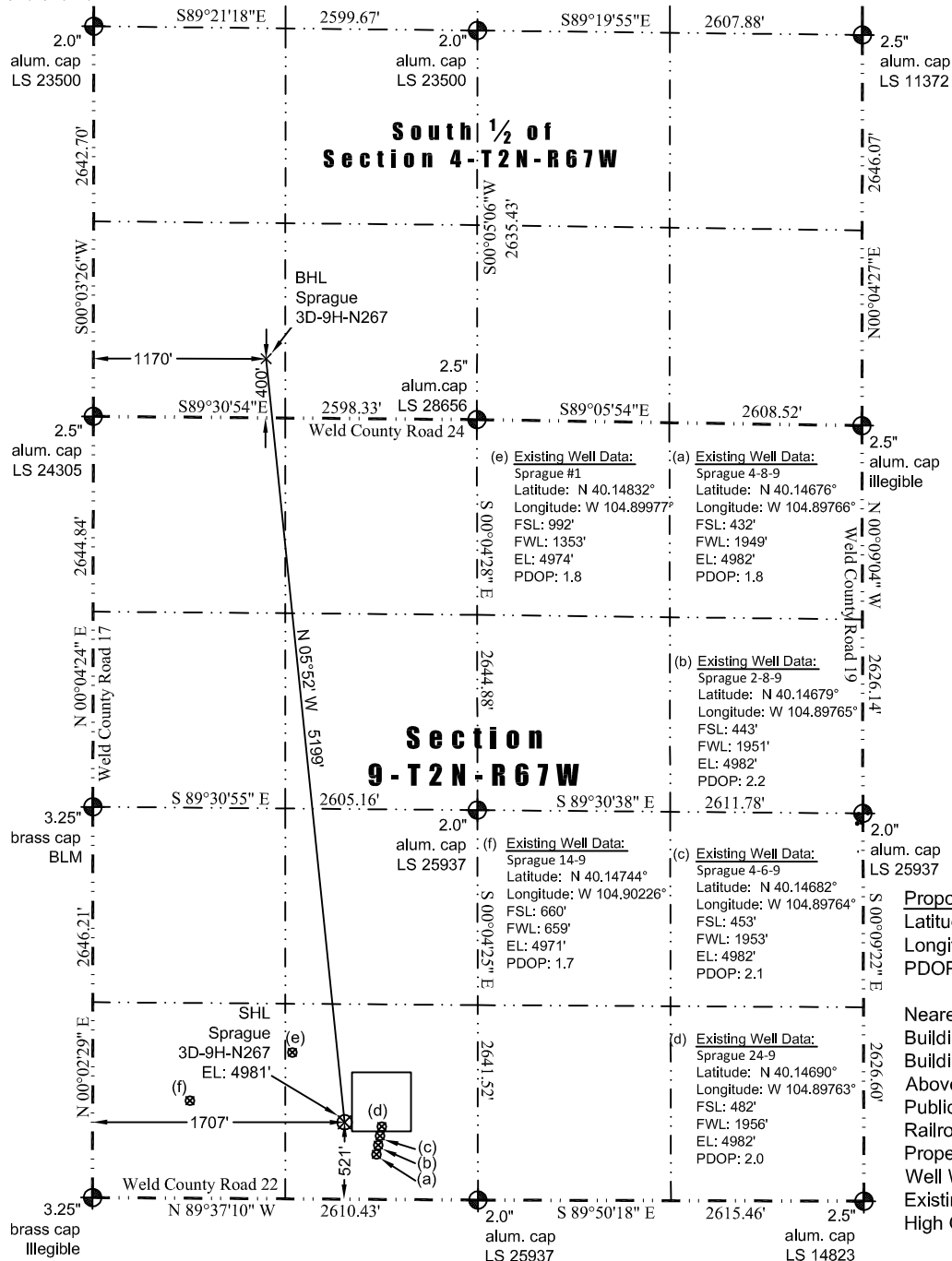


# JR Land Surveying, LLC

8114 Northstar Drive  
Windsor, Colorado 80528  
P. 970-576-4641

## WELL LOCATION CERTIFICATE

THIS MAP DOES NOT REPRESENT A BOUNDARY SURVEY



Scale 1" = 1200'

0 1200

approximate scale

**LEGEND**

- found survey monument
- calculated dimension

(c)

In accordance with a request from Jay Knutson of EnCana Oil & Gas (USA) Inc., JR Land Surveying, LLC has determined the location of the **Sprague 3D-9H-N267** well site to be SHL: 521' FSL and 1707' FWL, (BHL: 400' FSL and 1170' FWL), as measured at ninety (90) degrees from the section lines of Sections 4 and 9, Township 2 North, Range 67 West of the 6th Principal Meridian, Weld County Colorado.

### Notes:

- 1) Bearings and distances based on NAD 83 Colorado North State Plane Coordinates using RTK GPS observations taken 9/26/2013 by operator John Rice.
- 2) Conversion factor to ground (1.000271871).
- 3) Elevations based on NAVD 88 GPS heights and Geoid 2003 corrections.
- 4) See Location Drawing for visible improvements within 500 feet of pad site.
- 5) The surface use is cultivated field.

**NOTICE:** According to Colorado law you must commence any legal action based upon any defect in this W.L.C. within three years after you first discover such defect. In no event may any action based upon any defect in this W.L.C. be commenced more than ten years from this said date of the certification shown hereon.

I hereby certify that this Well Location Certificate was prepared by me or under my direct supervision on 10/9/2013 for and on behalf of EnCana Oil & Gas (USA) Inc. That it is not a Land Survey Plat or an Improvement Survey Plat and that it is not to be relied upon for establishment of fences, buildings, or other future improvement lines.

38219  
10-9-2013  
John Robert McGehee LS#38219  
Well: Sprague 3D-9H-N267 WLC