



Scale: 5" / 100'  
Measured Depth Log

Well Name Wells Ranch AA26-64-1HN(HORZ)

Location SEC25 T6N R63W

State COLORADO

Country USA

API Number 05-123-37565

Region DJ BASIN

Spud Date OCTOBER 7TH, 2013

Surface Coordinates

1749' FSL  
153' FWL  
LAT: 40.45495°N  
LONG: 104.39410°W

Bottom Hole Coordinates

1650' FSL  
150' FWL  
LAT: 40.45477°N  
LONG: 104.41314°W

Ground Elevation 4790'

K.B. Elevation 4814'

Logged Interval 1000' To 11483'

Total Depth 11483'

Formation PIERRE;NIOBRARA

Type of Drilling Fluid MUD;WATER;POLY

County WELD

Rig Number H&P 322

Field WATTENBERG

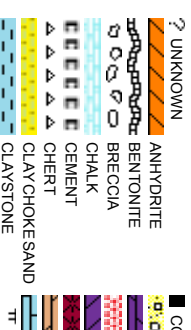
Drilling Completed 10/1/0003

Company NOBLE ENERGY

Address 1625 BROADWAY  
DENVER, CO 80202  
(303) 228-4000

Name JOHN READY;

Company COLUMBINE LOGGING  
Address 2385 S. LIPAN  
DENVER, CO 80202  
(303) 289-7764



# Operator

SY INC.

MAY  
2022

## Accessories

## Fossils

[illegible]

## Minerals

# Geologist
















MIKE GREENE

OGGING INC.

CRADO 80223

## Other Symbols

## Oil Show

-  MOLDIC
-  ORGANIC
-  PINPOINT
-  DEAD
-  EVEN
-  VUGVY
-  FAULT
-  FORMATION TOP
-  GAS SHOW
-  MN DEPTH
-  WIRELINE TESTED - LEFT
-  WIRELINE TESTED - RT
-  E EARTHLY
-  FINELY XLN
-  GRAINSTONE
-  L LITHOGRAPHIC

## Rounding

# Engineering

- QUESTIONABLE
- SPOTTED STAINING
- Engineering
- BIT
- CONNECTION (LEFT)
- Porosity
- NORMAL FAULT
- OIL SHOW
- OVERTURNED STRATA
- REVERSE FAULT
- ANGULAR
- R ROUNDED
- S SUBANG
- SUBRID
- WACKESTONE
- MIX MICROLYN
- MUDSTONE
- PACKSTONE
- WACKESTONE

## Porosity

-  E EARTHY
-  F FRACTURE
-  X INTERCRYSTALLINE
-  Q INTEROOLITIC
-  C CONNECTION (RIGHT)
-  CS CONNECTION GAS
-  C CORE - LOST
-  CR CORE - RECOVERED
-  DST INTERVAL
-  S SIDEWALL CORE (LEFT)
-  SS SIDEWALL CORE (RIGHT)
-  SL SLIDE
-  S SURVEY
-  TG TRIP GAS
-  BS BOUNDSTONE
-  C CHALKY
-  C CRYPTOXLN
-  M MODERATE
-  P POOR
-  W WELL

## Textures

## Sorting

## Rock Types

Legend	Rock Type	Legend	Rock Type
	METAMORPHIC		SHALY SLT STONE
	NOSAMPLE		SILTY SHALE
	SALT		SILTSTONE
	SANDSTONE		TILL
	SALT-PEPPER SAND		TUFF
	SHALE		WELDED TUFF
	SHALE COLORED		
	SHALE GRAY		
	SHALY SANDSTONE		
	LIMESTONE		
	MARLSTONE		
	GRANITE		
	GNEISS		
	GYPSUM		
	GRANITE		
	DOLomite		
	CONGLOMERATE		
	DAL		

ROP  
ROF  
GAMMA

Began Build @ 5978' MD  
@ 08:07 hrs, 10/09/2013

Total Gas & Chromatograph

GAS  
C1  
C2  
C3  
C4

MUD WT 9.4 VIS 37

BEGIN 50' SAMPLE  
INTERVALS at 6,000'

COLUMBINE LOGGING INC. RIGGED UP ON  
10/07/2013 MANNED 2-PERSON LOGGING  
WITH BLOODHOUND GAS CHROMATOGRAPH  
UNIT #0315

Depth Labels

% Lith

Well Bore  
TVD

Oil Show

Images

BHA # 2  
Bit Size: 8.750  
Manufacturer: Schlumberger/Smith  
Model: SDI611  
Serial Number: JH1601  
Nozzles: 6x14

Motor Number: 2  
Manufacturer: Sperry Drilling  
Model: VS: 224.69'  
Serial Number: 675-0001  
Bend: 2.0

MD: 6,027'  
TVD: 6,002.62'  
Inclination: 0.57 °  
Azimuth: 61.59 °

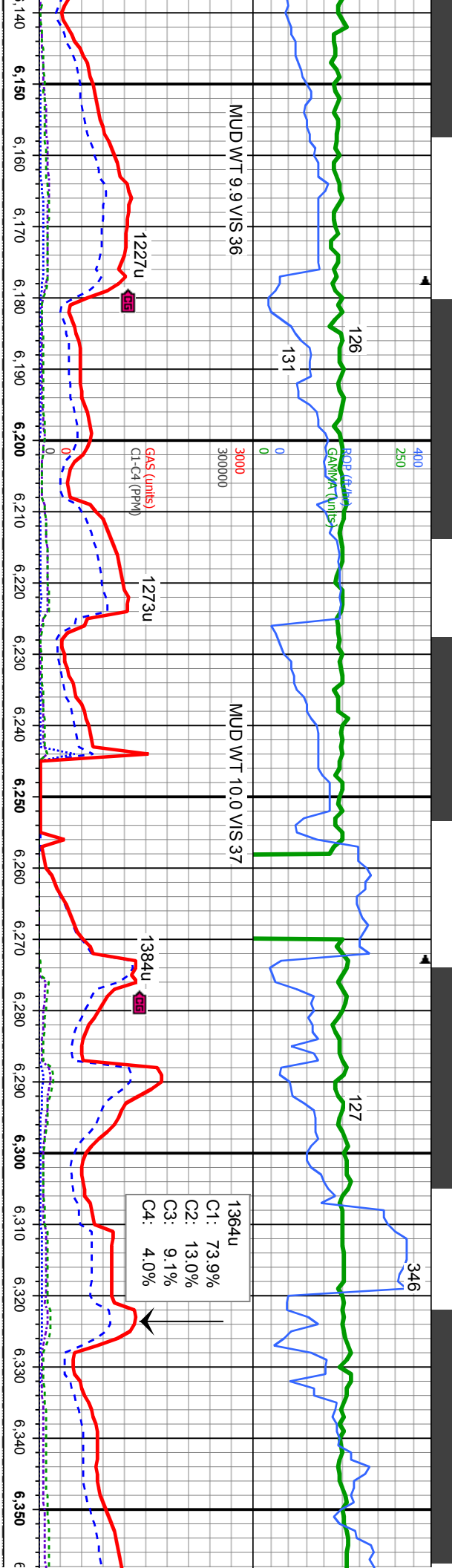
MD: 6,121'  
TVD: 6,096.3'  
Inclination: 8.6 °  
Azimuth: 274.23 °  
VS: 230.99'

85% SLTY SH: med gy - gy, occ dk gy, mod  
sft - mod firm, sb pty - sb blk, shy - silty tex,  
non calc  
15% SHY SS: wh - lt gy sme s&p, f gr, sb rd-  
sb ang, fr srt, fri, mod por, arg cnt, occ biot

100% SLTY SH: med gy - gy, occ dk gy,  
mod sft - mod firm, sb pty - sb blk, shy -  
silty tex, non calc

80% SLTY SH: med gy - gy, occ d  
sft - mod firm, sb pty - sb blk, shy  
non calc  
20% SHY SS: wh - lt gy sme s&p,  
rd - sb ang, fr srt, fri, mod por, arg  
biot

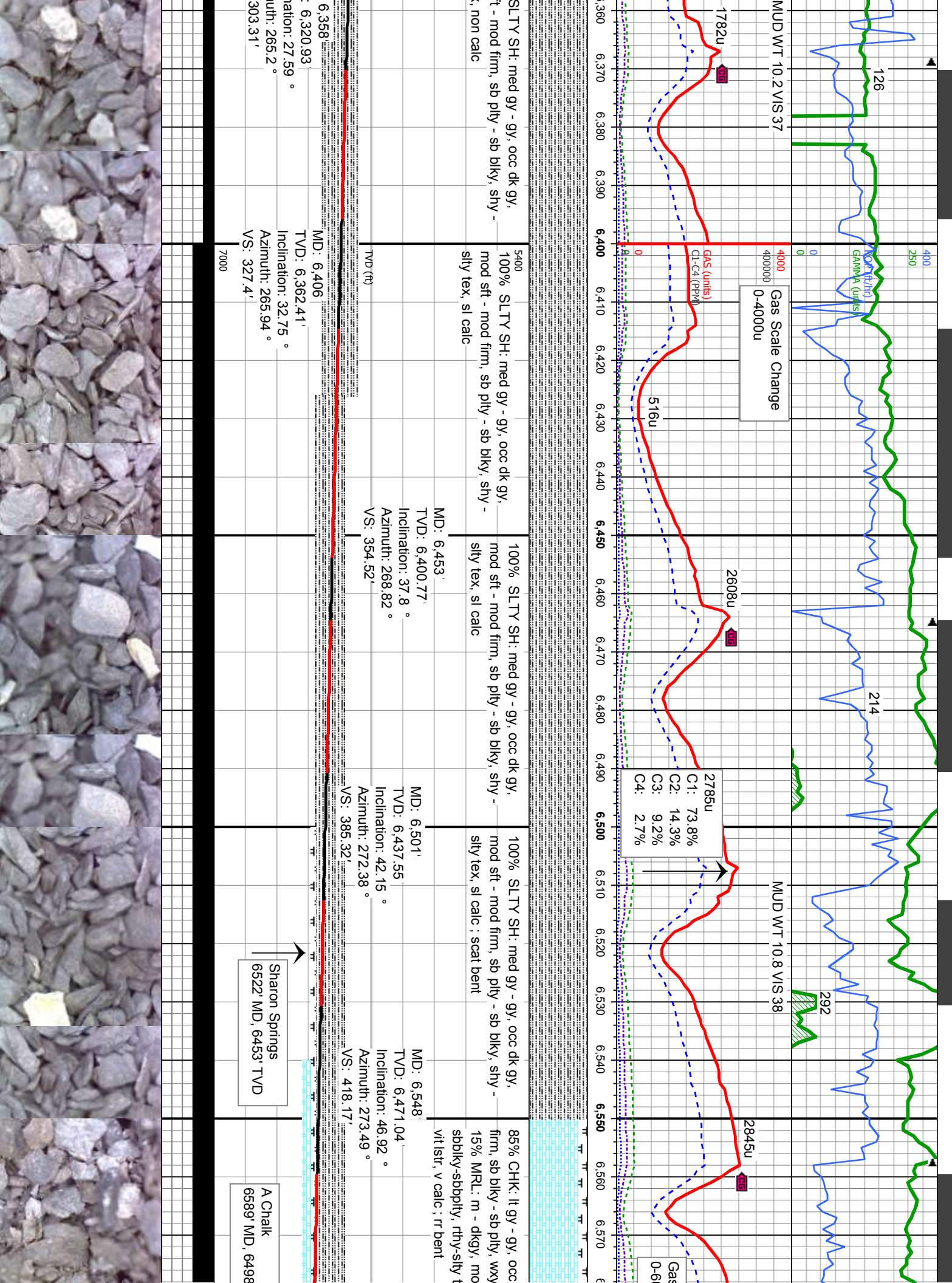




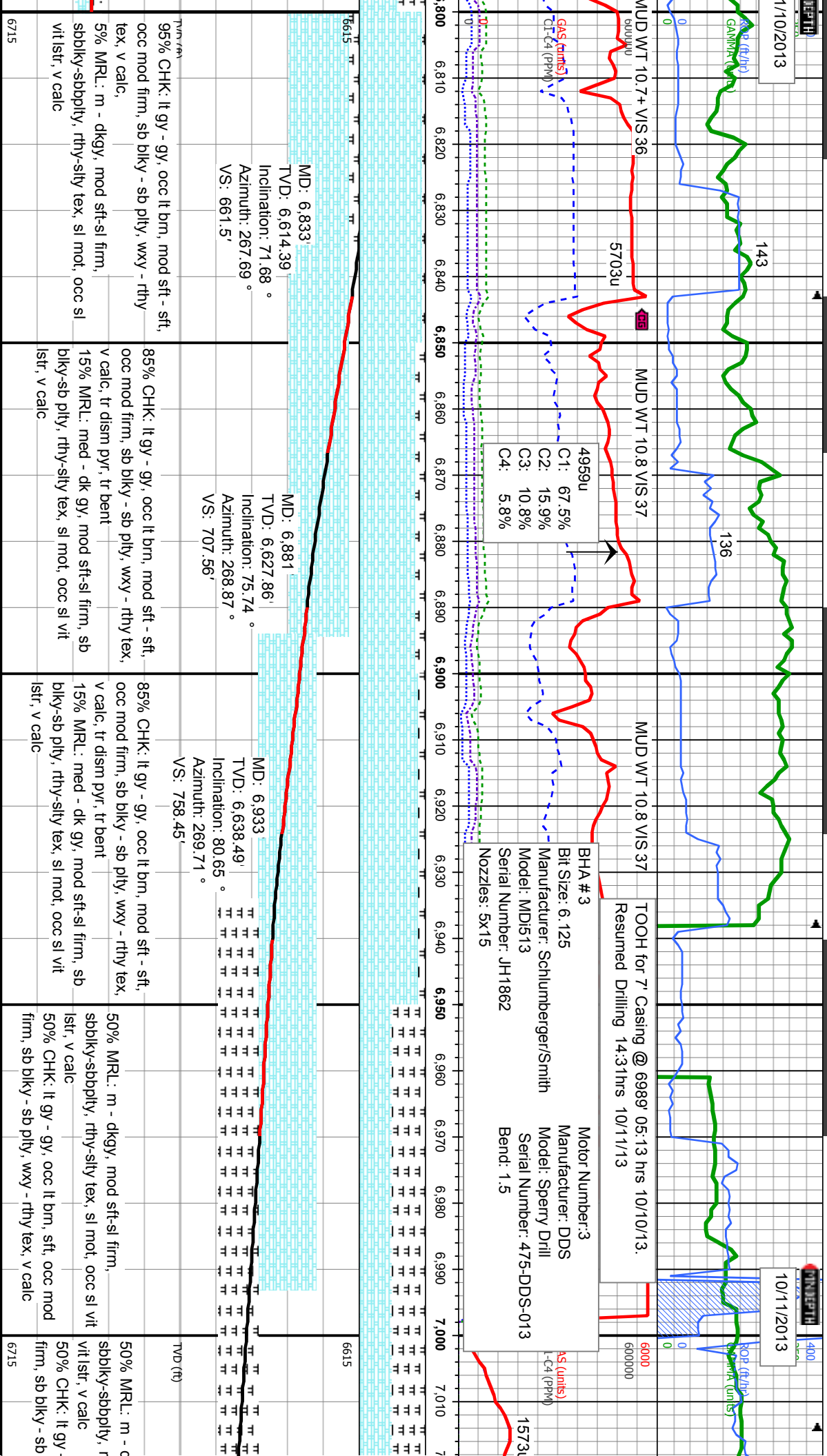
k gy, mod /- - silty tex, f gr, sb cnt, occ	100% SLTY SH: med gy - gy, occ dk gy, mod sft - mod firm, sb pty - sb blk, shy - silty tex, non calc	5400 100% SLTY SH: med gy - gy, occ dk gy, mod sft - mod firm, sb pty - sb blk, shy - silty tex, non calc	100% SLTY SH: med gy - gy, occ dk gy, mod sft - mod firm, sb pty - sb blk, shy - silty tex, non calc	100% SLTY SH: med gy - gy, occ dk gy, mod sft - mod firm, sb pty - sb blk, shy - silty tex, non calc	100% mod sft silty tex
--	--	--	--	--	------------------------------

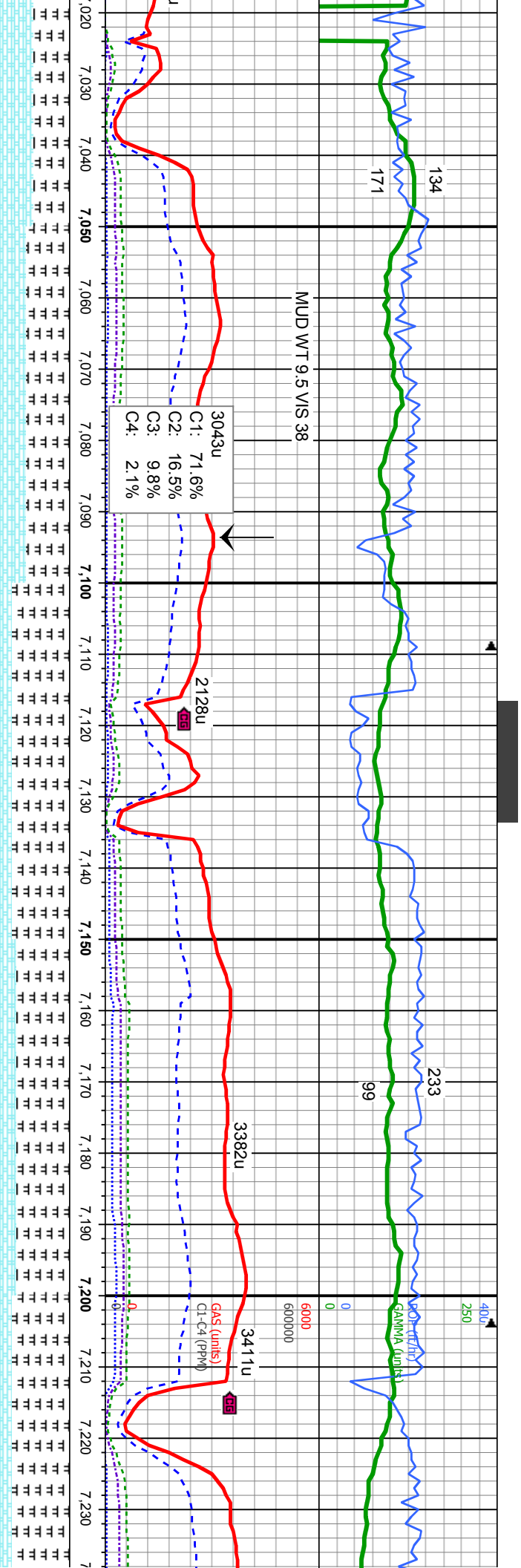
MD: 6,169 TVD: 6,143.47' Inclination: 12.61 ° Azimuth: 270.36 ° VS: 239.8'	MD: 6,216 TVD: 6,188.99' Inclination: 16.14 ° Azimuth: 270.52 ° VS: 251.46'	MD: 6,263 TVD: 6,233.73' Inclination: 19.51 ° Azimuth: 269.03 ° VS: 265.84'	MD: 6,311 TVD: 6,278.45' Inclination: 23.04 ° Azimuth: 266.13 ° VS: 283.25'	MD: TVD: Inclir: Azim: VS:
--	---	---	---	--







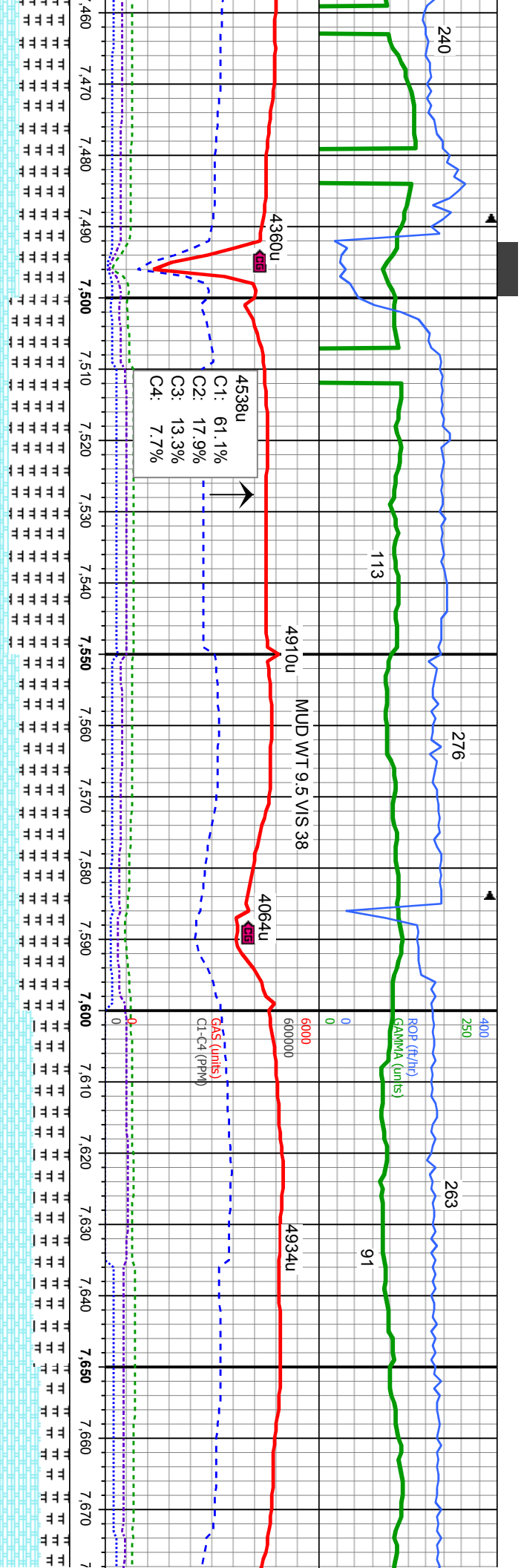




MD: 7.046' TVD: 6.652.3' Inclination: 85.31 ° Azimuth: 272.27 ° VS: 870.46'		60% MRL: m - dkgy, mod sft-sl firm, sbbkly-sbbply, rthy-slty tex, sl mot, occ sl lstr, v calc 40% CHK: lt gy - gy, occ lt brn, sft, occ mod firm, sb blkly - sb ply, wxy - rthy tex, v calc; tr bent	80% MRL: m - dkgy, mod sft-sl firm, sbbkly-sbbply, rthy-slty tex, sl mot, occ sl lstr, v calc 20% CHK: lt gy - gy, occ lt brn, sft, occ mod firm, sb blkly - sb ply, wxy, v calc, tr bent	75% MRL: m - dkgy, mod sft-sl firm, sbbkly-sbbply, rthy-slty tex, sl mot, occ sl vit lstr, v calc 25% CHK: lt gy - gy, occ lt brn, sft, occ mod firm, sb blkly - sb ply, wxy - rthy tex, v calc; tr bent	MD: 7.141' TVD: 6.657.69' Inclination: 88.18 ° Azimuth: 270.93 ° VS: 965.16'	180% MRL: m - dkgy, mod sft-sl firm, sbbkly-sbbply, rthy-slty tex, sl mot vit lstr, v calc 20% CHK: lt gy - gy, occ lt brn, sft, firm, sb blkly - sb ply, wxy - rthy tex tr bent	MD: 7.222' TVD: 6.663.10' Inclination: 85.31 ° Azimuth: 272.27 ° VS: 1.06'
---	--	---	--	---	--	---	--







RL: m - dkgy, mod sft-sl firm,  
sbblpy, rthy-slty tex, sl mot, v calc  
HK: lt gy - gy, occ lt brn, sft, occ mod  
biky - sb plty, wxy - rthy tex, v calc ; tr

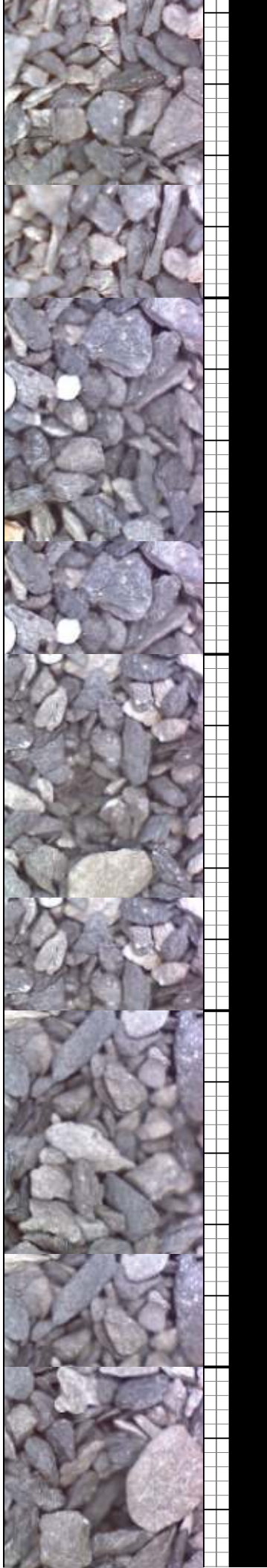
85% MRL: m - dkgy, mod sft-sl firm,  
sbblky-sbblpy, rthy-slty tex, sl mot, occ sl vit  
15% CHK: lt gy - gy, occ lt brn, sft, occ mod  
firm, sb biky - sb plty, wxy - rthy tex, v calc ; tr  
bent

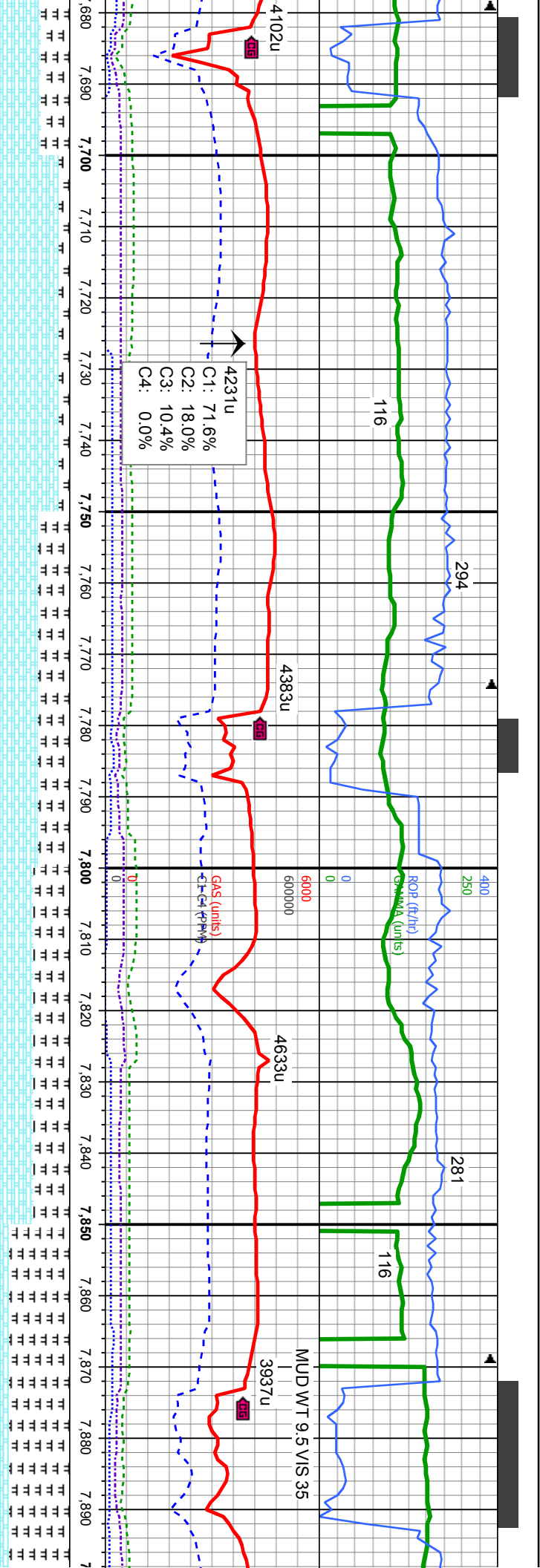
70% MRL: m - dkgy, mod sft-sl firm,  
sbblky-sbblpy, rthy-slty tex, sl mot, occ sl  
vit lstr, v calc  
30% CHK: lt gy - gy, occ lt brn, sft, occ mod  
firm, sb biky - sb plty, wxy - rthy tex, v calc

50% CHK: lt gy - gy, occ lt brn, sft, occ mod  
firm, sb biky - sb plty, wxy - rthy tex, v calc  
50% MRL: m - dkgy, mod sft-sl firm,  
sbblky-sbblpy, rthy-slty tex, sl mot

60% CHK: lt gy - gy, occ lt brn, sft, occ mod  
firm, sb biky - sb plty, wxy - rthy tex, v calc  
40% MRL: m - dkgy, mod sft-sl firm,  
sbblky-sbblpy, rthy-slty tex, sl mot

MD: 7,521'	MD: 7,616'
TVD: 6,659.24'	TVD: 6,663.55'
Inclination: 87.94 °	Inclination: 86.86 °
Azimuth: 269.41 °	Azimuth: 267.59 °
VS: 1,344.9'	VS: 1,439.8'





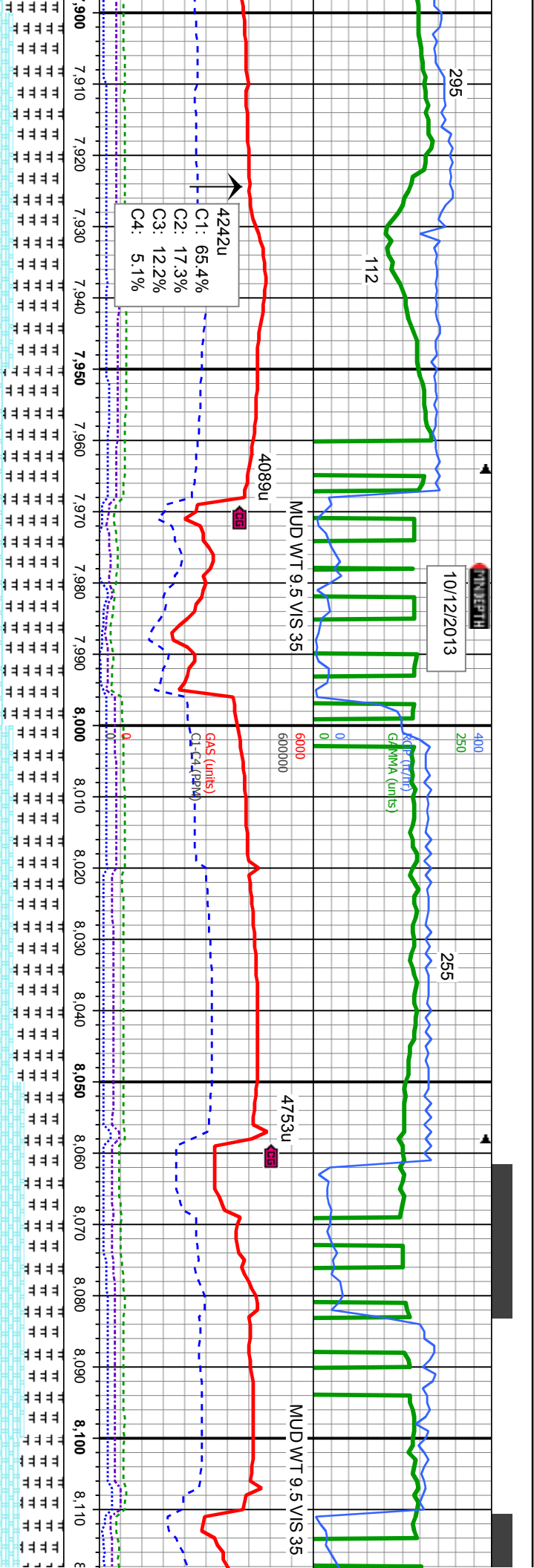
Depth (ft)	85% CHK: lt gy - gy, occ lt brn, sft, occ mod firm, sb blk - sb pty, wxy - rthy tex, v calc	55% CHK: lt gy - gy, occ lt brn, sft, occ mod firm, sb blk - sb pty, wxy - rthy tex, v calc	50% MRL: m - dkgy, mod sft-sl firm, sbblk-sbpty, rthy-sily tex, sl mot, occ sl vit	85% MRL: m - dkgy, mod sft-sl firm, sbblk-sbpty, rthy-sily tex, sl mot, occ sl vit
7680	.. ..	.. ..	.. ..	.. ..
7690	.. ..	.. ..	.. ..	.. ..
7700	.. ..	.. ..	.. ..	.. ..
7710	.. ..	.. ..	.. ..	.. ..
7720	.. ..	.. ..	.. ..	.. ..
7730	.. ..	.. ..	.. ..	.. ..
7740	.. ..	.. ..	.. ..	.. ..
7750	.. ..	.. ..	.. ..	.. ..
7760	.. ..	.. ..	.. ..	.. ..
7770	.. ..	.. ..	.. ..	.. ..
7780	.. ..	.. ..	.. ..	.. ..
7790	.. ..	.. ..	.. ..	.. ..
7800	.. ..	.. ..	.. ..	.. ..
7810	.. ..	.. ..	.. ..	.. ..
7820	.. ..	.. ..	.. ..	.. ..
7830	.. ..	.. ..	.. ..	.. ..
7840	.. ..	.. ..	.. ..	.. ..
7850	.. ..	.. ..	.. ..	.. ..
7860	.. ..	.. ..	.. ..	.. ..
7870	.. ..	.. ..	.. ..	.. ..
7880	.. ..	.. ..	.. ..	.. ..
7890	.. ..	.. ..	.. ..	.. ..

Parameter	Value
TVD: 6,668.12'	
MD: 7,711'	
Inclination: 87.62 °	
Azimuth: 267.65 °	
VS: 1,534.67'	

Parameter	Value
TVD: 6,672.14'	
MD: 7,806'	
Inclination: 87.53 °	
Azimuth: 266.87 °	
VS: 1,629.56'	

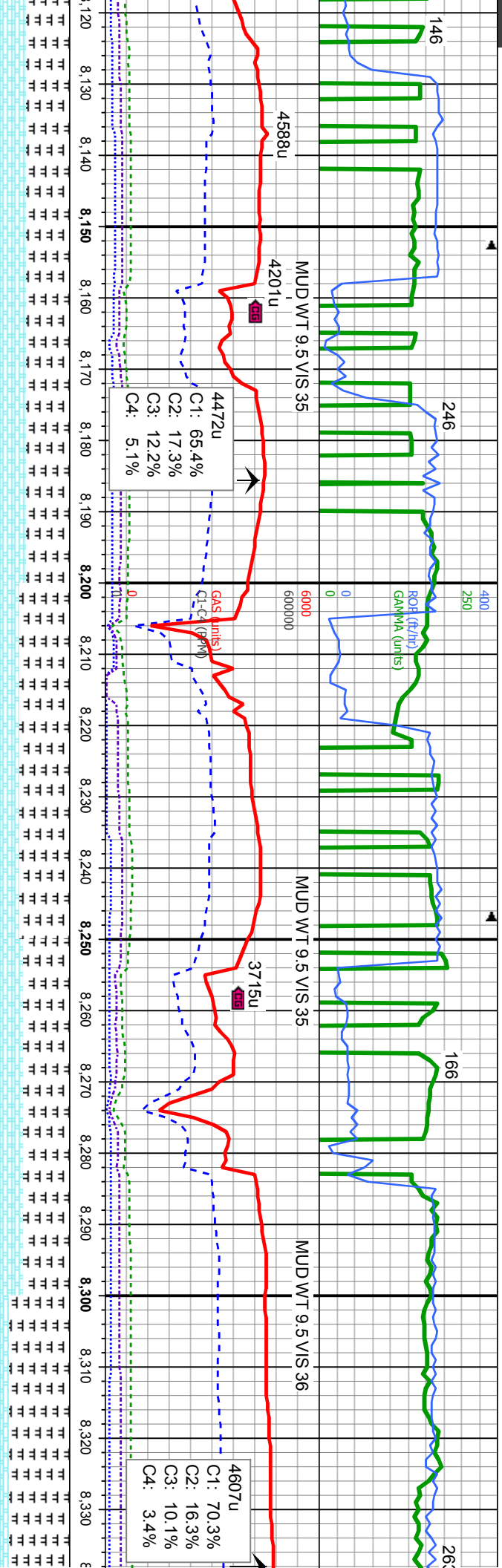




70% MRL: m - dkgy, mod sft-sl firm, sbblky-sbbply, rthy-slty tex, sl mot, occ sl vit lsfr, v calc 30% CHK: lt gy - gy, occ lt brn, sft, occ mod firm, sb blky - sb ply, wxy - rthy tex, v calc MD: 7.901' TVD: 6.677.23' Inclination: 86.33 ° Azimuth: 265.81 ° VS: 1.724.35'	85% MRL: m - dkgy, mod sft-sl firm, sbblky-sbbply, rthy-slty tex, sl mot, occ sl vit lsfr, v calc 15% CHK: lt gy - gy, occ lt brn, sft, occ mod firm, sb blky - sb ply, wxy - rthy tex, v calc MD: 7.995' TVD: 6.681.45' Inclination: 88.52 ° Azimuth: 265.65 °(ft) VS: 1.818.14'	6615 70% MRL: m - dkgy, mod sft-sl firm, sbblky-sbbply, rthy-slty tex, sl mot, occ sl vit lsfr, v calc 30% CHK: lt gy - gy, occ lt brn, sft, occ mod firm, sb blky - sb ply, wxy - rthy tex, v calc	55% MRL: m - dkgy, mod sft-sl firm, sbblky-sbbply, rthy-slty tex, sl mot, occ sl vit lsfr, v calc 45% CHK: lt gy - gy, occ lt brn, sft, occ mod firm, sb blky - sb ply, wxy - rthy tex, v calc MD: 8.090' TVD: 6.683.55' Inclination: 88.95 ° Azimuth: 266.04 ° VS: 1.912.87'	60% MRL: m - sbblky-sbbply, vit lsfr, v calc 40% CHK: lt gy firm, sb blky - st
--	--	--	--	---

6715

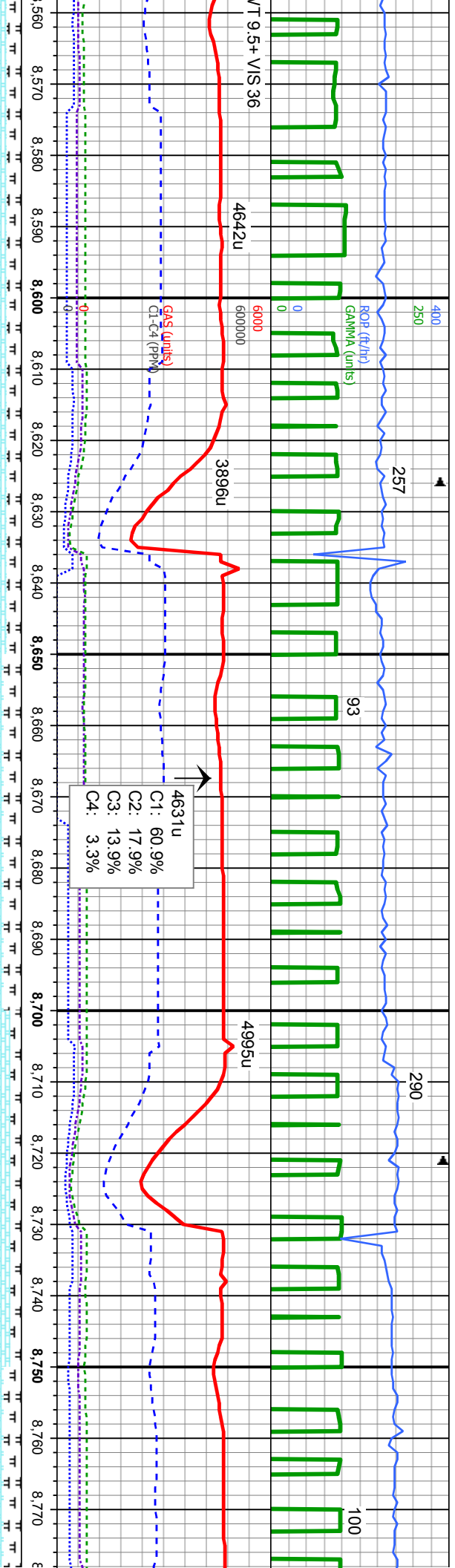




dkgy, mod sft-sl firm, rthy-silty tex, sl mot, occ sl	60% MRL: m - dkgy, mod sft-sl firm, sbblky-sbply, rthy-silty tex, sl mot, occ sl vit istr, v calc	6615	70% MRL: m - dkgy, mod sft-sl firm, sbblky-sbply, rthy-silty tex, sl mot, occ sl vit istr, v calc	65% MRL: m - dkgy, mod sft-sl firm, sbblky-sbply, rthy-silty tex, sl mot, occ sl vit istr, v calc	85% MRL: m - dkgy, mod sft-sl firm, sbblky-sbply, rthy-silty tex, sl mot, lstr, v calc
- gy, occ lt brn, sft, occ mod p pty, wxy - rthy tex, v calc	40% CHK: lt gy - gy, occ lt brn, sft, occ mod firm, sb blky - sb pty, wxy - rthy tex, v calc MD: 8,185		30% CHK: lt gy - gy, occ lt brn, sft, occ mod firm, sb blky - sb pty, wxy - rthy tex, v calc MD: 8,280	35% CHK: lt gy - gy, occ lt brn, sft, occ mod firm, sb blky - sb pty, wxy - rthy tex, v calc MD: 8,280	15% CHK: lt gy - gy, occ lt brn, sft, firm, sb blky - sb pty, wxy - rthy tex,
	TVD: 6,681.91' Inclination: 93.03 ° Azimuth: 267.54 ° VS: 2,007.79'	TVD (ft)		TVD: 6,676.76' Inclination: 93.18 ° Azimuth: 271.15 ° VS: 2,102.63'	
		6715			







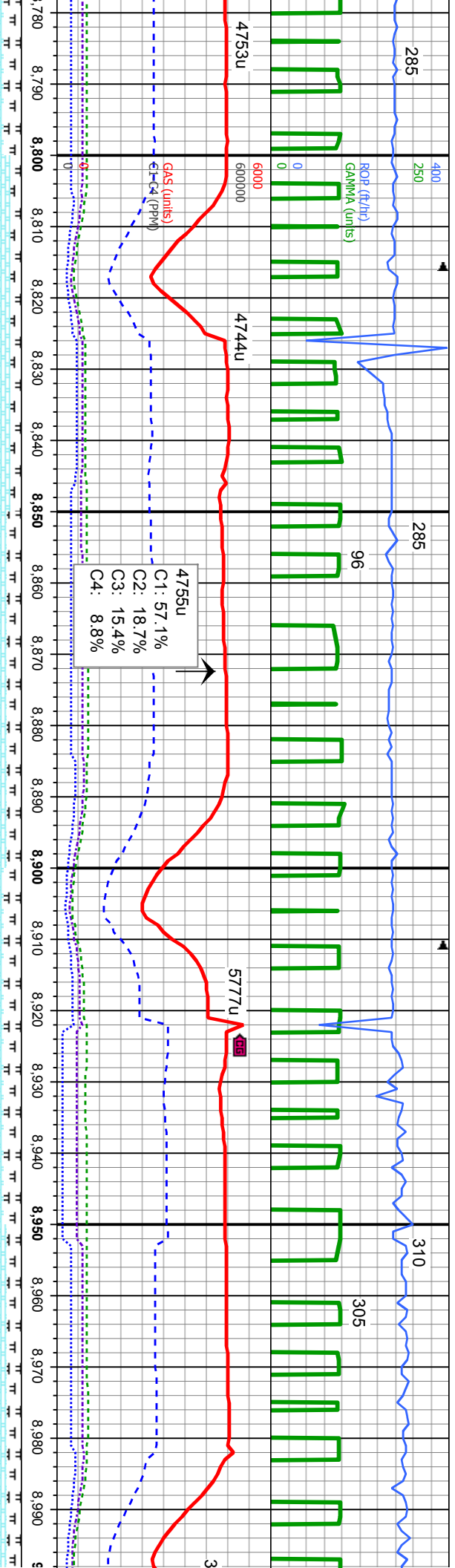
HK: lt gy - gy, occ lt brn, sft, occ mod blkly - sb plty, wxy - rthy tex, v calc	6615	80% CHK: lt gy - gy, occ lt brn, sft, occ mod firm, sb blkly - sb plty, wxy - rthy tex, v calc 20% MRL: m - dkgy, mod sft-sl firm, sbblkly-sbplty, rthy-slty tex, sl mot, occ sl vit lstr, v calc
MD: 8.564'		
TVD: 6,675.04'		
Inclination: 89.08 °		
Azimuth: 271.41 °		
VS: 2,386.1'		

MD: 8.659'		
TVD: 6,676.18'		
Inclination: 89.54 °		
Azimuth: 272.33 °		
VS: 2,480.94'		

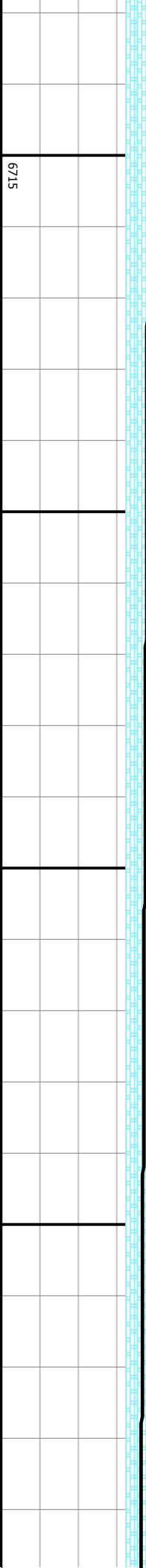
6715

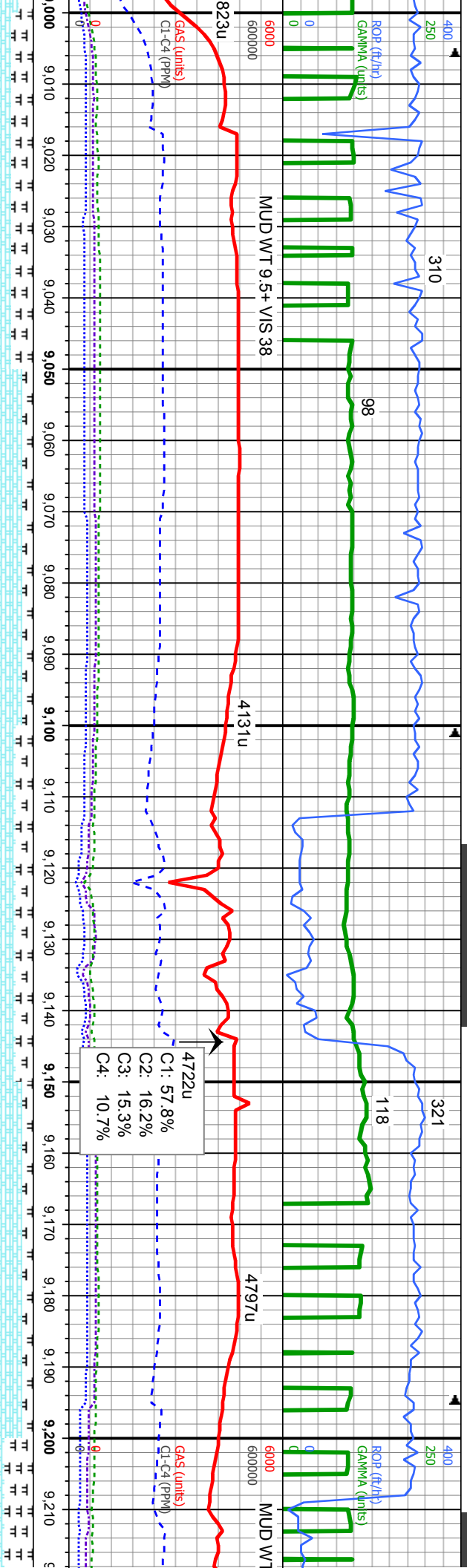
MD: 8.754'		
TVD: 6,676.75'		
Inclination: 89.78 °		
Azimuth: 273.53 °		
VS: 2,575.66'		



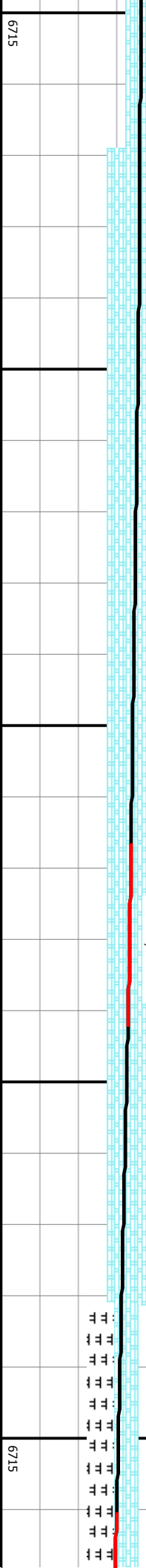


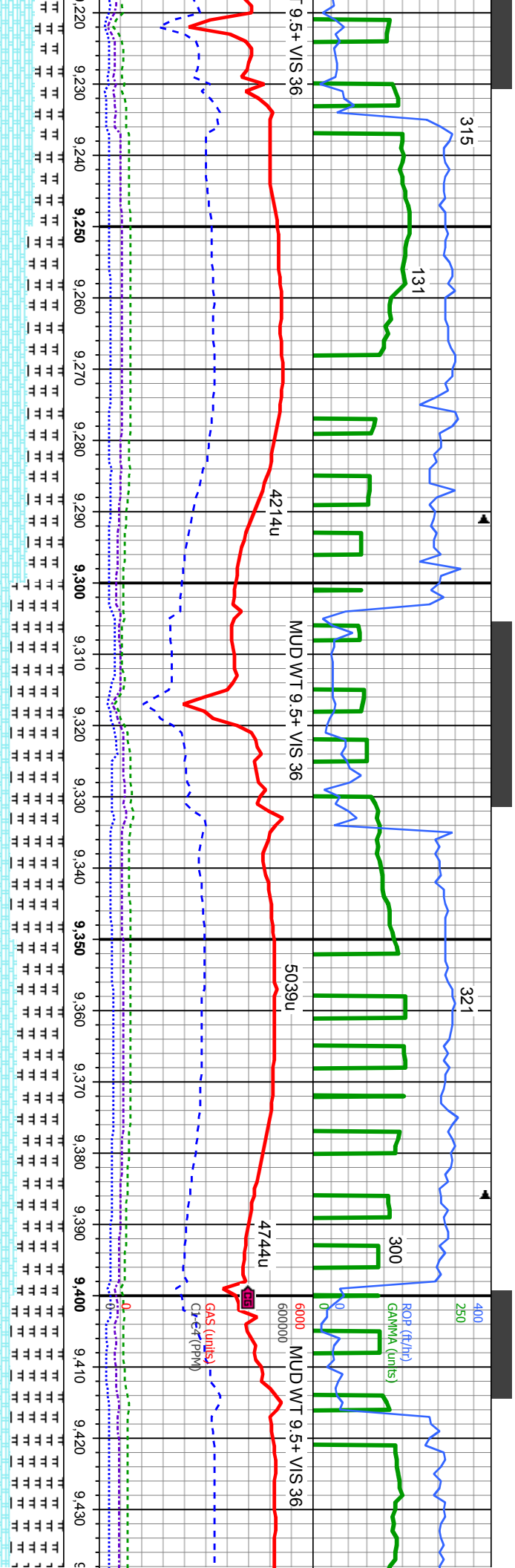
It brn, sft, occ mod - rthy tex, v calc d sft-sl firm, x, sl mot, occ sl vit	6615 85% CHK: It gy - gy, occ It brn, sft, occ mod firm, sb blkly - sb plty, wxy - rthy tex, v calc 15% MRL: m - dkgy, mod sft-sl firm, sbbkly-sboply, rthy-slty tex, sl mot, occ sl vit lstr, v calc MD: 8,849' TVD: 6,677.4' Inclination: 89.44 ° Azimuth: 274.34 ° VS: 2,670.24'	80% CHK: It gy - gy, occ It brn, sft, occ mod firm, sb blkly - sb plty, wxy - rthy tex, v calc 20% MRL: m - dkgy, mod sft-sl firm, sbbkly-sboply, rthy-slty tex, sl mot, occ sl vit lstr, v calc	75% CHK: It gy - gy, occ It brn, sft, occ mod firm, sb blkly - sb plty, wxy - rthy tex, v calc 25% MRL: m - dkgy, mod sft-sl firm, sbbkly-sboply, rthy-slty tex, sl mot, occ sl vit lstr, v calc	80% CHK: It gy - gy, occ It brn, sft, occ mod firm, sb blkly - sb plty, wxy - rthy tex, v calc 20% MRL: m - dkgy, mod sft-sl firm, sbbkly-sboply, rthy-slty tex, sl mot, occ sl vit lstr, v calc
TVD (ft)				



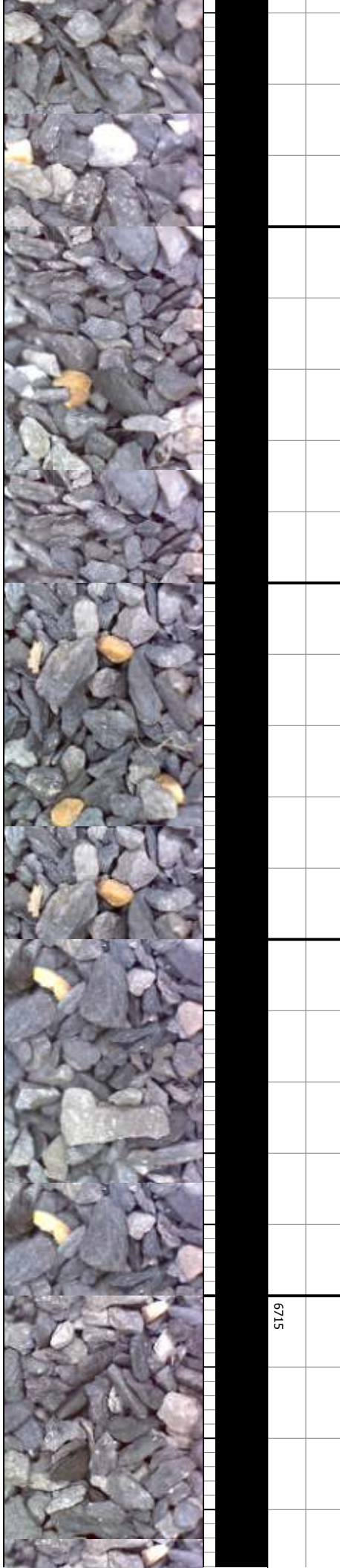


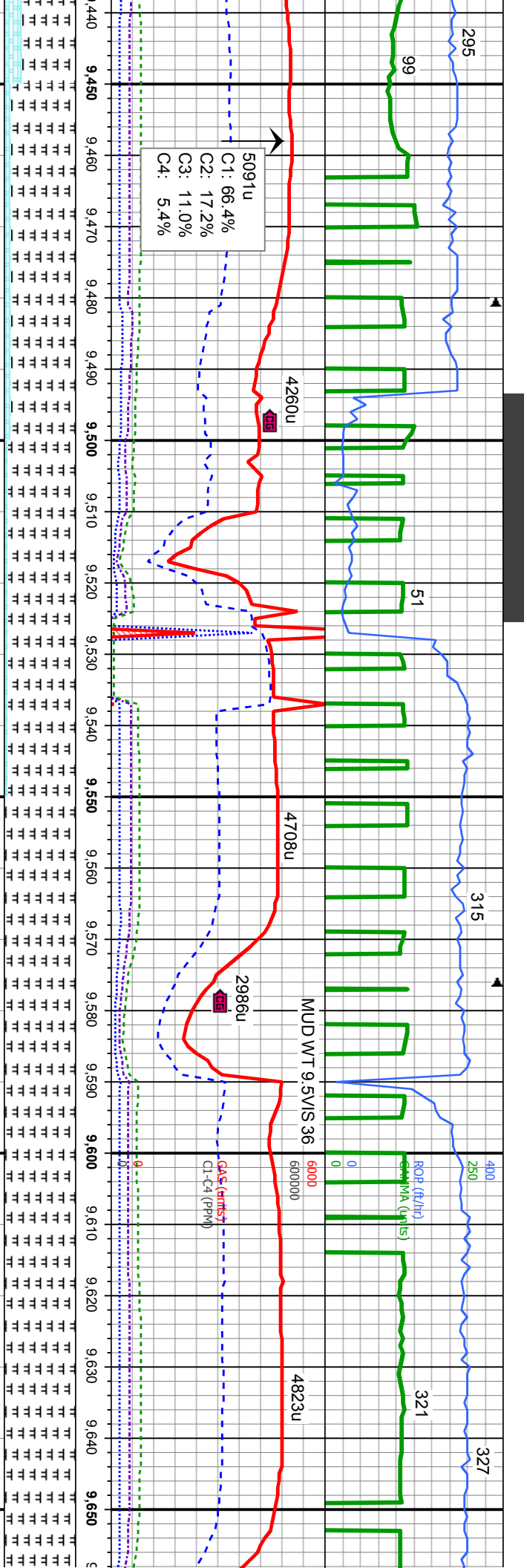
6615	70% CHK: It gy - gy, occ It brn, sft, occ mod firm, sb blkly - sb plty, wxy - rthy tex, v calc 30% MRL: m - dkgy, mod sft-sl firm, sbblkly-sbplty, rthy-slty tex, sl mot, occ sl vit lsir, v calc	85% CHK: It gy - gy, occ It brn, sft, occ mod firm, sb blkly - sb plty, wxy - rthy tex, v calc 15% MRL: m - dkgy, mod sft-sl firm, sbblkly-sbplty, rthy-slty tex, sl mot, occ sl vit lsir, v calc	75% CHK: It gy - gy, occ It brn, sft, occ mod firm, sb blkly - sb plty, wxy - rthy tex, v calc 25% MRL: m - dkgy, mod sft-sl firm, sbblkly-sbplty, rthy-slty tex, sl mot, occ sl vit lsir, v calc	85% CHK: It gy - gy, occ It brn, sft, occ mod firm, sb blkly - sb plty, wxy - rthy tex, v calc 15% MRL: m - dkgy, mod sft-sl firm, sbblkly-sbplty, rthy-slty tex, sl mot, occ sl vit lsir, v calc	60% CHK: It gy - gy, occ It brn, sft, occ mod firm, sb blkly - sb plty, wxy - rthy tex, v calc 40% MRL: m - dkgy, mod sft-sl firm, sbblkly-sbplty, rthy-slty tex, sl mot, occ sl vit lsir, v calc
	MD: 9,038' TVD: 6,679.34' Inclination: 89.38 ° Azimuth: 276.61 ° VS: 2,857.92'		MD: 9,133' TVD: 6,681.9' Inclination: 87.53 ° Azimuth: 274.95 ° VS: 2,952.13'		
TVD (ft)					TVD (ft)



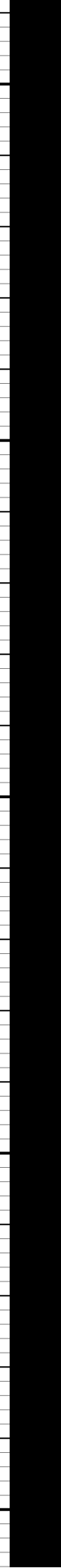


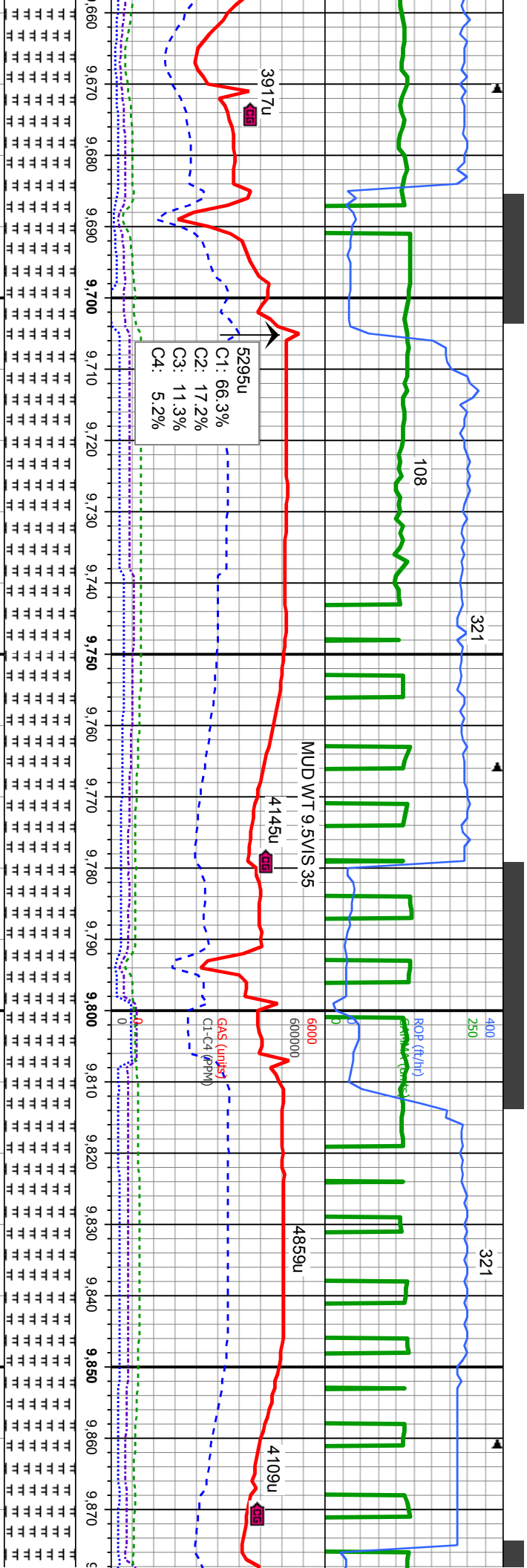
- gy, occ lt brn, sft, occ mod pty, wxy - rthy tex, v calc dkgy, mod sft-sl firm, rthy-sily tex, sl mot, occ sl vit	50% MRL: m - dkgy, mod sft-sl firm, sbblky-sbbpty, rthy-sily tex, sl mot, occ sl vit	75% MRL: m - dkgy, mod sft-sl firm, sbblky-sbbpty, rthy-sily tex, sl mot, occ sl vit	65% MRL: m - dkgy, mod sft-sl firm, sbblky-sbbpty, rthy-sily tex, sl mot, occ sl vit	675% MRL: m - dkgy, mod sft-sl firm, sbblky-sbbpty, rthy-sily tex, sl mot, occ sl vit
MD: 9,228'	MD: 9,323'	MD: 9,418'		
VD: 6,685.97'	TVD: 6,687.36'	TVD: 6,684.78'		
Inclination: 87.56 °	Inclination: 90.77 °	Inclination: 92.34 °		
Azimuth: 272.25 °	Azimuth: 268.24 °	Azimuth: 269.89 °		
VS: 3,046.67'	VS: 3,141.58'	VS: 3,236.54'		





m, t, occ sl, v calc	90% MRL: m - dkgy, mod sft-sl firm, sbblky-sboply, rthy-slty tex, sl mot, occ sl vit lstr, v calc	95% MRL: m - dkgy, mod sft-sl firm, sbblky-sboply, rthy-slty tex, sl mot, occ sl vit lstr, v calc	100% MRL: m - dkgy, mod sft-sl firm, sbblky-sboply, rthy-slty tex, sl mot, occ sl vit lstr, v calc	6" 100% MRL: m - dkgy, mod sft-sl firm, sbblky-sboply, rthy-slty tex, sl mot, occ sl vit lstr, v calc	100% MRL: m - dkgy, mod sft-sl firm, sbblky-sboply, rthy-slty tex, sl mot, occ sl vit lstr, v calc
occ mod	10% CHK: lt gy - gy, occ lt brn, sft, occ mod	5% CHK: lt gy - gy, occ lt brn, sft, occ mod firm, sb blky - s			
	firm, sb blky - sb ply, wxy - rthy tex, v calc				
		MD: 9.513 TVD: 6,683.25' Inclination: 89.51 ° Azimuth: 270.73 ° VS: 3,331.47'		MD: 9.608 TVD: 6,684.12' Inclination: 89.44 ° Azimuth: 273.97 ° VS: 3,426.25'	
					6715



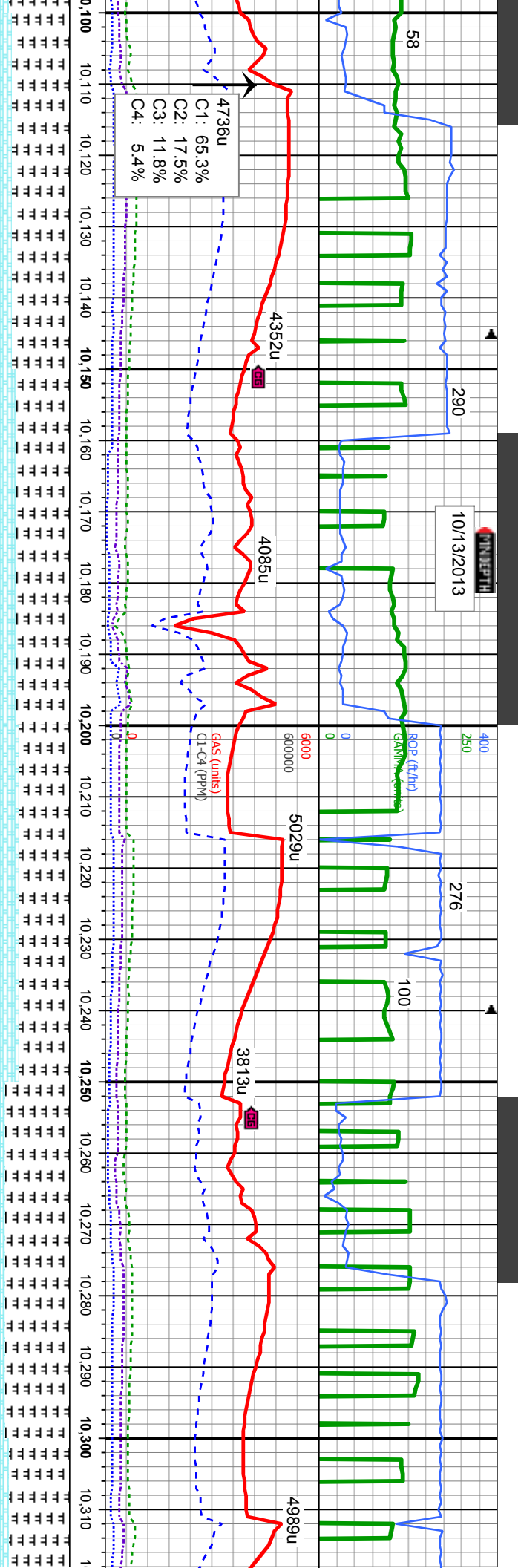


C1: 66.3%  
C2: 17.2%  
C3: 11.3%  
C4: 5.2%

MRL: m - dkgy, mod sft-sl firm, sbbiky-sbbply, rthy-slty tex, sl mot, occ sl vit	100% MRL: m - dkgy, mod sft-sl firm, sbbiky-sbbply, rthy-slty tex, sl mot, occ sl vit	100% MRL: m - dkgy, mod sft-sl firm, sbbiky-sbbply, rthy-slty tex, sl mot, occ vit	66% 100% MRL: m - dkgy, mod sft-sl firm, sbbiky-sbbply, rthy-slty tex, sl mot, occ vit	100% MRL: m - dkgy, mod sft-sl firm, sbbiky-sbbply, rthy-slty tex, sl mot, occ vit
calc	lstr, v calc	sl vit lstr, v calc	vit lstr, v calc	vit lstr, v calc
MD: 9,703 TVD: 6,686.42' Inclination: 87.78 ° Azimuth: 274.21 ° VS: 3,520.78'				
MD: 9,798 TVD: 6,687.98' Inclination: 90.34 ° Azimuth: 271.83 ° VS: 3,615.47'				
6715				

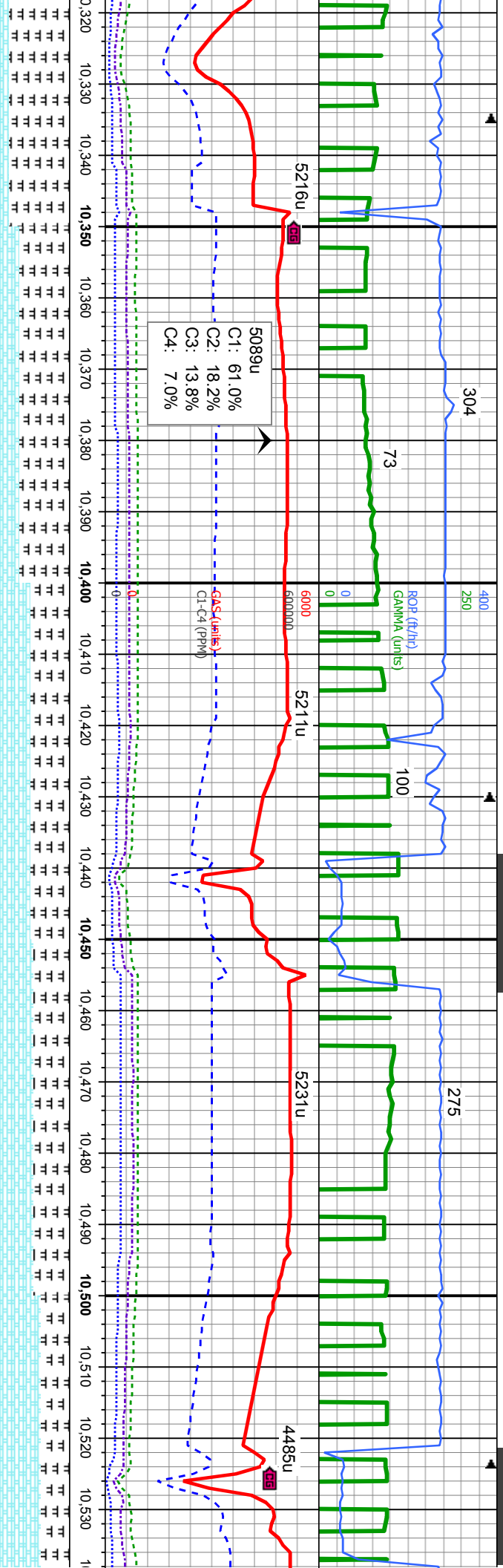






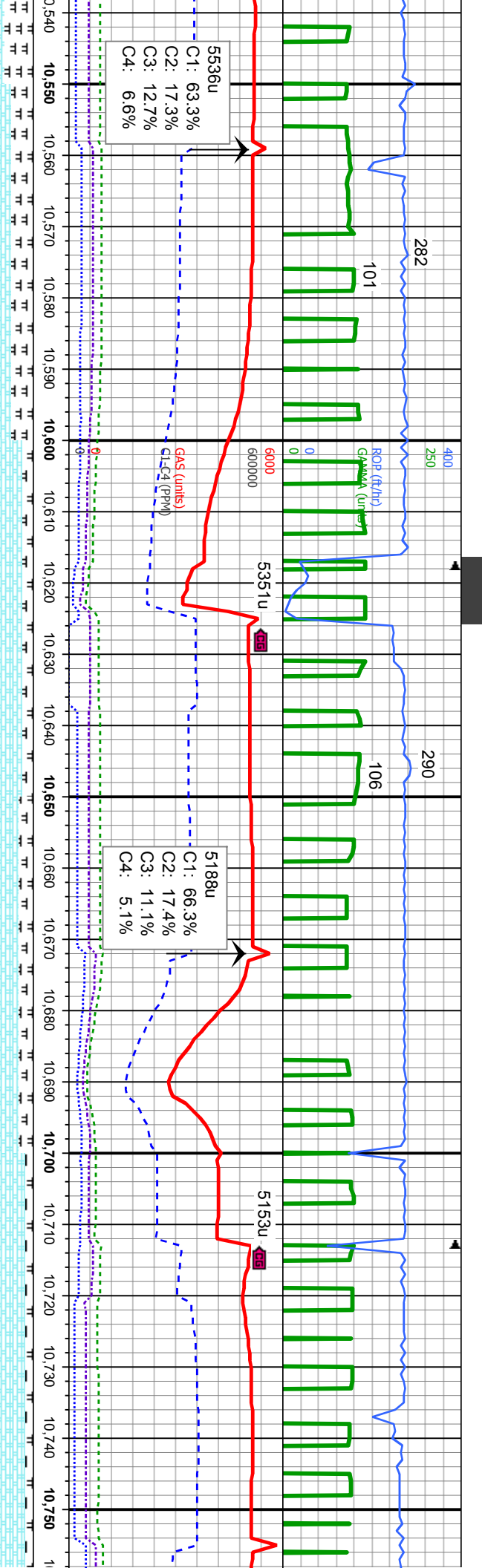
80% MRL: m - dkgy, mod sft-sl firm, sbblky-sbply, rthy-slty tex, sl mot, occ sl vit lstr, v calc 20% CHK: lt gy - gy, occ lt brn, sft, occ mod firm, sb blkly - sb ply, wxy - rthy tex, v calc	75% MRL: m - dkgy, mod sft-sl firm, sbblky-sbply, rthy-slty tex, sl mot, occ sl vit lstr, v calc 25% CHK: lt gy - gy, occ lt brn, sft, occ mod firm, sb blkly - sb ply, wxy - rthy tex, v calc	70% MRL: m - dkgy, mod sft-sl firm, sbblky-sbply, rthy-slty tex, sl mot, occ sl vit lstr, v calc 30% CHK: lt gy - gy, occ lt brn, sft, occ mod firm, sb blkly - sb ply, wxy - rthy tex, v calc	90% MRL: m - dkgy, mod sft-sl firm, sbblky-sbply, rthy-slty tex, sl mot, occ sl vit lstr, v calc 10% CHK: lt gy - gy, occ lt brn, sft, occ mod firm, sb blkly - sb ply, wxy - rthy tex, v calc	85% MRL: m - dkgy, mod sft-sl firm, sbblky-sbply, rthy-slty tex, sl mot, occ sl vit lstr, v calc 15% CHK: lt gy - gy, occ lt brn, sft, occ mod firm, sb blkly - sb ply, wxy - rthy tex, v calc
MD: 10,177 TVD: 6,690.78' Inclination: 87.56 ° Azimuth: 269.39 ° VS: 3,993.32'	MD: 10,272 TVD: 6,694 Inclination: 88.55 ° Azimuth: 266 ° VS: 4,088.24'	MD: 10,272 TVD: 6,694 Inclination: 88.55 ° Azimuth: 266 ° VS: 4,088.24'	MD: 10,272 TVD: 6,694 Inclination: 88.55 ° Azimuth: 266 ° VS: 4,088.24'	MD: 10,272 TVD: 6,694 Inclination: 88.55 ° Azimuth: 266 ° VS: 4,088.24'
6715	6715	6715	6715	6715





dkgy, mod sft-sl firm, rthy-silty tex, sl mot, occ sl vit	70% MRL: m - dkgy, mod sft-sl firm, sbbkly-sbply, rthy-silty tex, sl mot, occ sl vit lstr, v calc 30% CHK: lt gy - gy, occ lt bm, sft, occ mod firm, sb blkly - sb ply, wxy - rthy tex, v calc	6615	55% MRL: m - dkgy, mod sft-sl firm, sbbkly-sbply, rthy-silty tex, sl mot, occ sl vit lstr, v calc 45% CHK: lt gy - gy, occ lt bm, sft, occ mod firm, sb blkly - sb ply, wxy - rthy tex, v calc	MD: 10,367' TVD: 6,695.13' Inclination: 90.09 ° Azimuth: 264.65 ° VS: 4,183.07'
dkgy, mod sft-sl firm, rthy-silty tex, sl mot, occ sl vit	50% MRL: m - dkgy, mod sft-sl firm, sbbkly-sbply, rthy-silty tex, sl mot, occ sl vit lstr, v calc 50% CHK: lt gy - gy, occ lt bm, sft, occ mod firm, sb blkly - sb ply, wxy - rthy tex, v calc	6715	60% CHK: lt gy - gy, occ lt bm, sft, firm, sb blkly - sb ply, wxy - rthy tex, 40% MRL: m - dkgy, mod sft-sl firm, sbbkly-sbply, rthy-silty tex, sl mot, occ sl vit lstr, v calc	MD: 10,461' TVD: 6,695.51' Inclination: 89.45 ° Azimuth: 266.56 ° VS: 4,276.94'



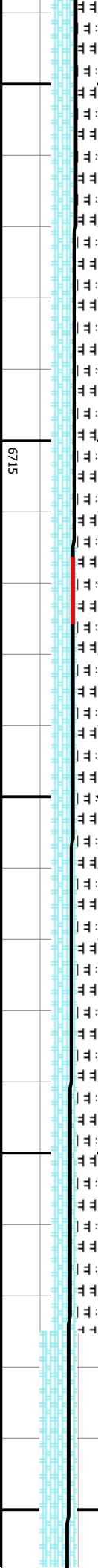


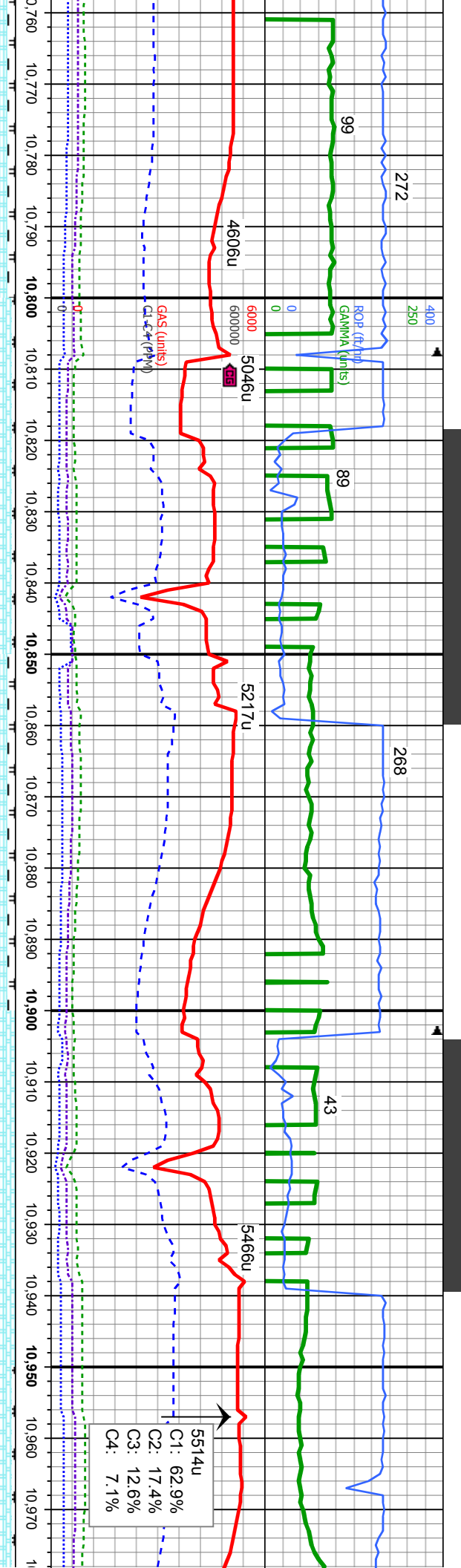
occ mod v calc	70% CHK: lt gy - gy, occ lt bm, sft, occ mod firm, sb blkly - sb ply, wxy - rthy tex, v calc 30% MRL: m - dkgy, mod sft-sl firm, sbblkly-sbply, rthy-sily tex, sl mot, occ sl vit lstr, v calc	6615	80% CHK: lt gy - gy, occ lt bm, sft, occ mod firm, sb blkly - sb ply, wxy - rthy tex, v calc 20% MRL: m - dkgy, mod sft-sl firm, sbblkly-sbply, rthy-sily tex, sl mot, occ sl vit lstr, v calc	90% CHK: lt gy - gy, occ lt bm, sft, occ mod firm, sb blkly - sb ply, wxy - rthy tex, v calc 10% MRL: m - dkgy, mod sft-sl firm, sbblkly-sbply, rthy-sily tex, sl mot, occ sl vit lstr, v calc	90% C
----------------	--	------	--	--	-------

MD: 10,556'  
TVD: 6,695.99'  
Inclination: 89.97 °  
Azimuth: 270.84 °  
VS: 4,371.92'

MD: 10,651'  
TVD: 6,696.79'  
Inclination: 89.07 °  
Azimuth: 271.21 °  
VS: 4,466.82'

MD: 10,746'  
TVD: 6,697.84'  
Inclination: 89.66 °  
Azimuth: 275.13 °  
VS: 4,561.5'





CHK: It gy - gy, occ It brn, sft, occ mod  
b blkly - sb plty, wxy - rthy tex, v calc  
MR: m - dkgy, mod sft-sl firm,  
-sbply, rthy-sily tex, sl mot, occ sl vit  
calc

6615  
95% CHK: It gy - gy, occ It brn, sft, occ mod  
firm, sb blkly - sb plty, wxy - rthy tex, v calc  
5% MR: m - dkgy, mod sft-sl firm,  
sbbkly-sbply, rthy-sily tex, sl mot, occ sl vit  
lstr, v calc

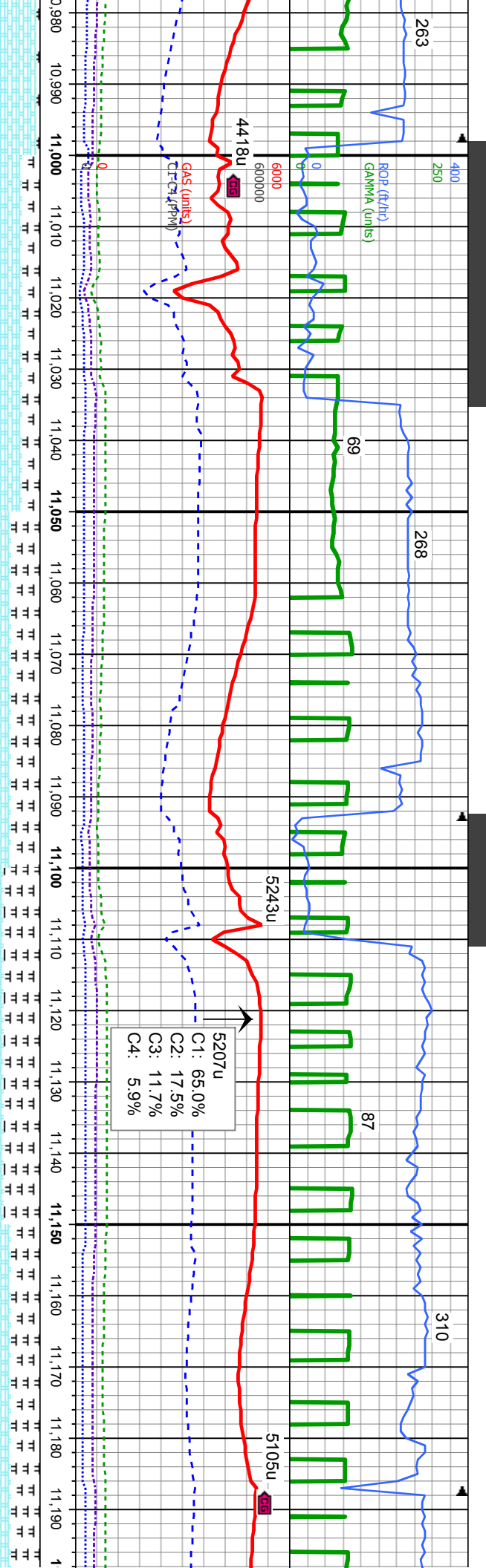
90% CHK: It gy - gy, occ It brn, sft, occ mod  
firm, sb blkly - sb plty, wxy - rthy tex, v calc  
10% MR: m - dkgy, mod sft-sl firm,  
sbbkly-sbply, rthy-sily tex, sl mot, occ sl vit  
lstr, v calc

100% CHK: It gy - gy, occ It brn, sft, occ  
mod firm, sb blkly - sb plty, wxy - rthy tex, v  
calc

95% CHK: It gy - gy, occ  
firm, sb blkly - sb plty, wxy  
5% MR: m - dkgy, mod  
sbbkly-sbply, rthy-sily tex  
lstr, v calc

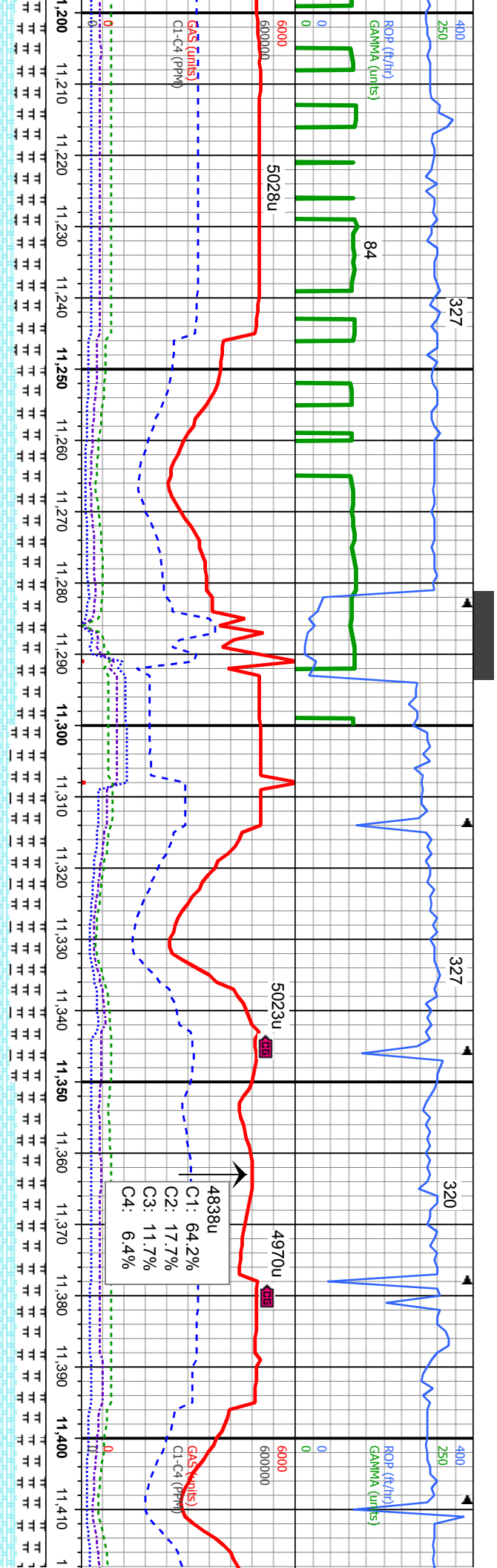
TVD (ft)	MD: 10,841' TVD: 6,699.99' Inclination: 87.75 ° Azimuth: 274.94 ° VS: 4,655.86'
6715	MD: 10,936' TVD: 6,704.64' Inclination: 86.64 ° Azimuth: 270.7 ° VS: 4,750.47'





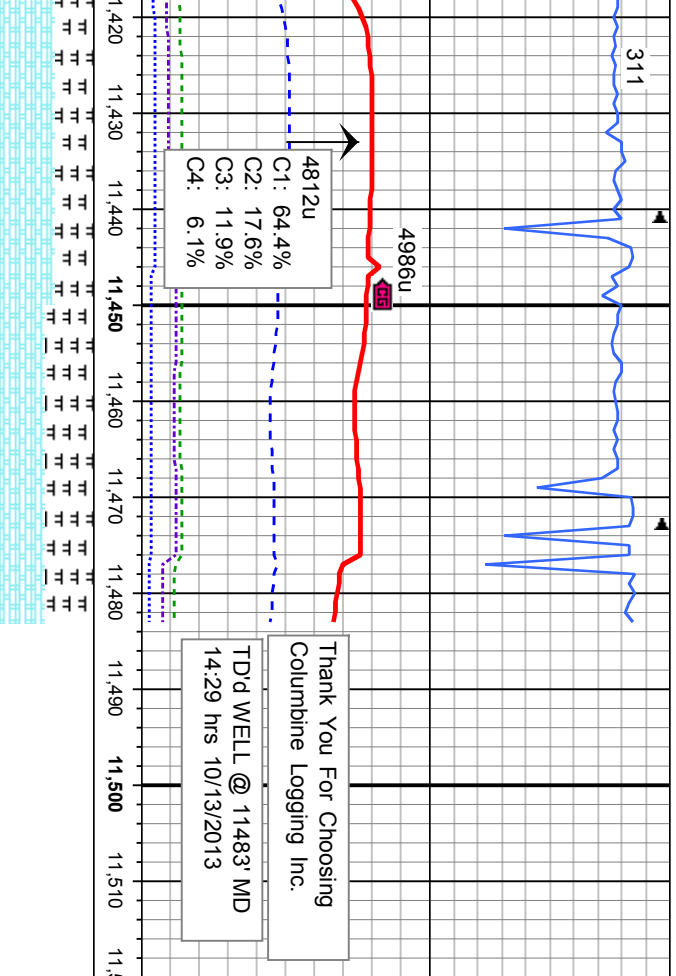
It bm, sft, occ mod - rthy tex, v calc sft-sl firm, sblm, sl mot, occ sl vit	6615 75% CHK: It gy - gy, occ It bm, sft, occ mod firm, sb blkly - sb pily, wxy - rthy tex, v calc 25% MRL: m - dkgy, mod sft-sl firm, sblm-sbply, rthy-sily tex, sl mot, occ sl vit lsr, v calc	60% CHK: It gy - gy, occ It bm, sft, occ mod firm, sb blkly - sb pily, wxy - rthy tex, v calc 40% MRL: m - dkgy, mod sft-sl firm, sblm-sbply, rthy-sily tex, sl mot, occ sl vit lsr, v calc	50% CHK: It gy - gy, occ It bm, sft, occ mod firm, sb blkly - sb pily, wxy - rthy tex, v calc 50% MRL: m - dkgy, mod sft-sl firm, sblm-sbply, rthy-sily tex, sl mot, occ sl vit lsr, v calc; r inoc fos frag	60% CHK: It gy - gy, occ It bm, sft, occ mod firm, sb blkly - sb pily, wxy - rthy tex, v calc 40% MRL: m - dkgy, mod sft-sl firm, sblm-sbply, rthy-sily tex, sl mot, occ sl vit lsr, v calc; r inoc fos frag
TVD (ft)	MD: 11,031' TVD: 6,708.57' Inclination: 88.61 ° Azimuth: 267.7 ° VS: 4,845.36'		MD: 11,126' TVD: 6,709.32' Inclination: 90.49 ° Azimuth: 267.32 ° VS: 4,940.34'	
6715				





6615	55% CHK: lt gy - gy, occ lt brn, sft, occ mod firm, sb blkly - sb ply, wxy - rthy tex, v calc 45% MRL: m - dkgy, mod sft-sl firm, sbblkly-sbply, rthy-sily tex, sl mot, occ sl vit lstr, v calc ; rr inoc fos frag	60% CHK: lt gy - gy, occ lt brn, sft, occ mod firm, sb blkly - sb ply, wxy - rthy tex, v calc 40% MRL: m - dkgy, mod sft-sl firm, sbblkly-sbply, rthy-sily tex, sl mot, occ sl vit lstr, v calc ; rr inoc fos frag	50% CHK: lt gy - gy, occ lt brn, sft, occ mod firm, sb blkly - sb ply, wxy - rthy tex, v calc 50% MRL: m - dkgy, mod sft-sl firm, sbblkly-sbply, rthy-sily tex, sl mot, occ sl vit lstr, v calc	60% CHK: lt gy - gy, occ lt brn, sft, occ mod firm, sb blkly - sb ply, wxy - rthy tex, v calc 40% MRL: m - dkgy, mod sft-sl firm, sbblkly-sbply, rthy-sily tex, sl mot, occ sl vit lstr, v calc	6615	60% CHK: lt gy firm, sb blkly - sb 40% MRL: m - sbblkly-sbply, r
TVD (ft)	MD: 11,221' TVD: 6,709.22' Inclination: 89.63 ° Azimuth: 268.09 ° VS: 5,035.33'		MD: 11,316' TVD: 6,710.3' Inclination: 89.07 ° Azimuth: 267.51'		TVD (ft)	MD: 11 TVD: 6 Inclinat Azimuth VS: 5,2





- gy, occ lt brn, sft, occ mod ply, wxy - rthy tex, v calc dkgy, mod sft-sl firm, rthy-slty tex, sl mot, occ sl vit	50% CHK: lt gy - gy, occ lt brn, sft, occ mod firm, sb blkly - sb ply, wxy - rthy tex, v calc 50% MRL: m - dkgy, mod sft-sl firm, sbbkly-sbply, rthy-slty tex, sl mot, occ sl vit lstr, v calc	Projection MD: 11,483' TVD: 6,711.65' Inclination: 89.75 ° Azimuth: 270.14 ° N/S: 5,297.27'
--	--	--

