

T1N, R65W, 6th P.M.

GREAT WESTERN OIL & GAS COMPANY

Well location, TAOKA KF 01-029HN, located as shown in the SE 1/4 SW 1/4 of Section 1, T1N, R65W, 6th P.M., Weld County, Colorado.

BASIS OF ELEVATION

HUBBS TRIANGULATION STATION LOCATED IN THE NE 1/4 OF SECTION 21, T1N, R64W, 6th P.M., TAKEN FROM THE KEENESBURG, QUADRANGLE, COLORADO, WELD COUNTY, 7.5 MINUTE QUAD (TOPOGRAPHIC MAP) PUBLISHED BY THE UNITED STATES DEPARTMENT OF THE INTERIOR, GEOLOGICAL SURVEY. SAID ELEVATION IS MARKED AS BEING 5168 FEET.

BASIS OF BEARINGS

BASIS OF BEARINGS IS A G.P.S. OBSERVATION.

LEGEND:

- 90° SYMBOL
- PROPOSED WELL HEAD.
- PROPOSED ENTRY POINT.
- PROPOSED TARGET BOTTOM HOLE.
- SECTION CORNERS LOCATED.
- SECTION CORNERS RE-ESTABLISHED.
- (Not Set on Ground.)

LINE TABLE		
LINE	DIRECTION	LENGTH
L1	N75°03'13"E	856.61'



SCALE
CERTIFICATE

THIS IS TO CERTIFY THAT THE ABOVE PLAT WAS PREPARED FROM FIELD NOTES OF ACTUAL SURVEYS MADE BY ME OR UNDER MY SUPERVISION AND THAT THE SAME ARE TRUE AND CORRECT TO THE BEST OF MY KNOWLEDGE AND BELIEF.

REGISTERED AND SIGNATORY
REGISTRATION NO. 12345
STATE OF COLORADO
9-1-13

UTAH ENGINEERING & LAND SURVEYING
86 SOUTH 200 EAST - VERNAL, UTAH 84078
(436) 789-1017

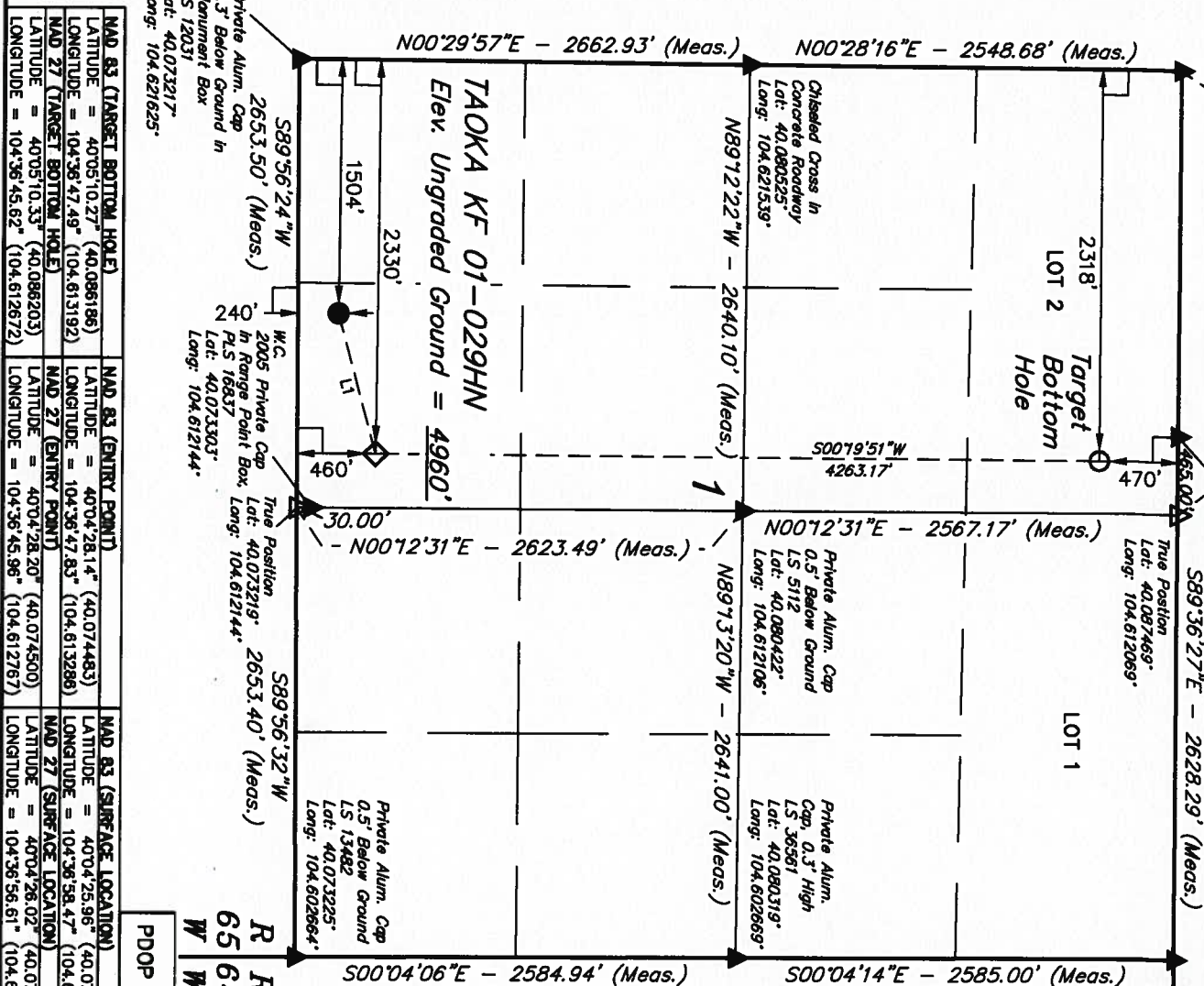
PDOP = 1.9

SCALE 1" = 1000'

DATE SURVEYED: 10-17-13 DATE DRAWN: 10-22-13

PARTY D.N. G.W. J.W. REFERENCES G.L.O. PLAT

WEATHER COOL FILE GREAT WESTERN OIL & GAS COMPANY



MAD 83 (TARGET BOTTOM HOLE)		MAD 83 (ENTRY POINT)		MAD 83 (SURFACE LOCATION)	
LATITUDE = 40°05'10.27" (40.086186)	LATITUDE = 40°04'28.14" (40.074483)	LATITUDE = 40°04'25.96" (40.073878)	LATITUDE = 40°04'25.96" (40.073878)	LATITUDE = 40°04'25.96" (40.073878)	LATITUDE = 40°04'25.96" (40.073878)
LONGITUDE = 104°36'47.49" (104.613192)	LONGITUDE = 104°36'47.83" (104.613288)	LONGITUDE = 104°36'47.83" (104.613288)	LONGITUDE = 104°36'47.83" (104.613288)	LONGITUDE = 104°36'47.83" (104.613288)	LONGITUDE = 104°36'47.83" (104.613288)
MAD 27 (TARGET BOTTOM HOLE)		MAD 27 (ENTRY POINT)		MAD 27 (SURFACE LOCATION)	
LATITUDE = 40°05'10.33" (40.086203)	LATITUDE = 40°04'28.20" (40.074500)	LATITUDE = 40°04'28.20" (40.074500)	LATITUDE = 40°04'28.20" (40.074500)	LATITUDE = 40°04'28.20" (40.074500)	LATITUDE = 40°04'28.20" (40.074500)
LONGITUDE = 104°36'45.62" (104.612672)	LONGITUDE = 104°36'45.96" (104.612767)	LONGITUDE = 104°36'45.96" (104.612767)	LONGITUDE = 104°36'45.96" (104.612767)	LONGITUDE = 104°36'45.96" (104.612767)	LONGITUDE = 104°36'45.96" (104.612767)