

T1N, R65W, 6th P.M.

Private Alum. Cap
0.3' Below Ground
LS 16408
Lat: 40.087322°
Long: 104.621461°

S89°36'27"E - 2628.29' (Meas.)

W.C.
2012 Private Alum. Cap,
0.2' Below Ground, PLS 28285
Lat: 40.087478°
Long: 104.613731°

S89°36'27"E - 2628.29' (Meas.)

Private Alum. Cap
0.2' Below Ground
LS 25837
Lat: 40.087417°
Long: 104.602675°

T1N
T2N

GREAT WESTERN OIL & GAS COMPANY
Well location, TAOKA KF 01-025HN, located as shown in the SE 1/4 SW 1/4 of Section 1, T1N, R65W, 6th P.M., Weld County, Colorado.

BASIS OF ELEVATION

HUBBS TRIANGULATION STATION LOCATED IN THE NE 1/4 OF SECTION 21, T1N, R64W, 6th P.M., TAKEN FROM THE KEENESBURG, QUADRANGLE, COLORADO, WELD COUNTY, 7.5 MINUTE QUAD (TOPOGRAPHIC MAP) PUBLISHED BY THE UNITED STATES DEPARTMENT OF THE INTERIOR, GEOLOGICAL SURVEY. SAID ELEVATION IS MARKED AS BEING 5168 FEET.

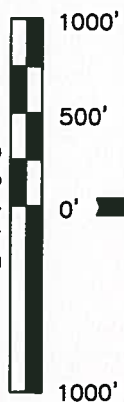
BASIS OF BEARINGS

BASIS OF BEARINGS IS A G.P.S. OBSERVATION.

LEGEND:

- 90° SYMBOL
- PROPOSED WELL HEAD.
- PROPOSED ENTRY POINT.
- PROPOSED TARGET BOTTOM HOLE.
- SECTION CORNERS LOCATED.
- SECTION CORNERS RE-ESTABLISHED.
- (Not Set on Ground.)

LINE TABLE		
LINE	DIRECTION	LENGTH
L1	N55°43'49"W	390.28'



SCALE

CERTIFICATE

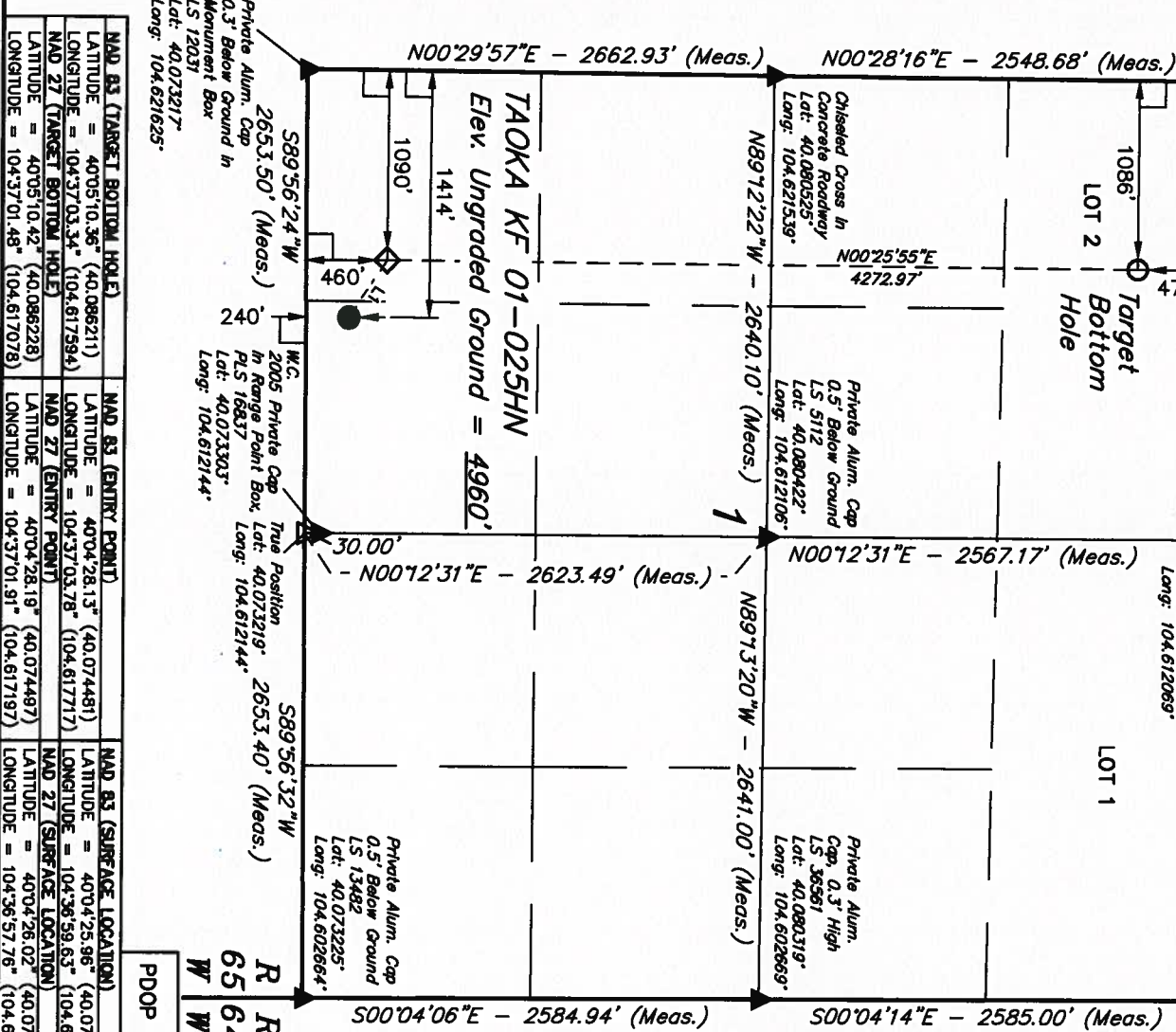
THIS IS TO CERTIFY THAT THE ABOVE PLAT WAS PREPARED FROM FIELD NOTES OF ACTUAL SURVEYS MADE BY ME OR UNDER MY SUPERVISION AND THAT THE SAME ARE TRUE AND CORRECT TO THE BEST OF MY KNOWLEDGE AND BELIEF.

REVISED: 10-22-13 J.W.
REVISED: 05-28-13 A.D.
REVISED: 05-02-13

UNTARH ENGINEERING & LAND SURVEYING
86 SOUTH 200 EAST - VERNAL, UTAH 84078
(435) 789-1017

SCALE 1" = 1000'
DATE SURVEYED: 02-22-13
DATE DRAWN: 02-25-13

PARTY Z.B. A.G. J.W.
REFERENCES C.L.O. PLAT
WEATHER COOL
FILE GREAT WESTERN OIL & GAS COMPANY



PDOP = 1.6