

Great Western

Well Name: **Taoka KF 01-025HN**

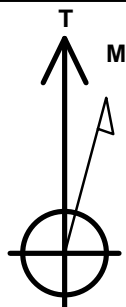
Surface Location: Taoka West Pad Sec.1-T1N-R65W
North American Datum 1983 , US State Plane 1983 , Colorado Northern Zone

Ground Elevation: 4959.7

+N/-S	+E/-W	Northing	Easting	Latitude	Longitude	Slot
0.0	0.0	1270990.23	3247225.56	40.073878	-104.616564	
RKB - 16.5' WELL @ 4976.2ft (RKB - 16.5')						

WELLBORE TARGET DETAILS

Name	TVD	+N/-S	+E/-W	Shape
SHL 240'FSL & 1414'FWL	1.0	0.0	0.0	Point
BHL 470'FNL & 1086'FWL	6966.2	4492.9	-288.2	Point
Entry Pt. 460'FSL & 1090'FWL	6966.2	219.7	-322.7	Point



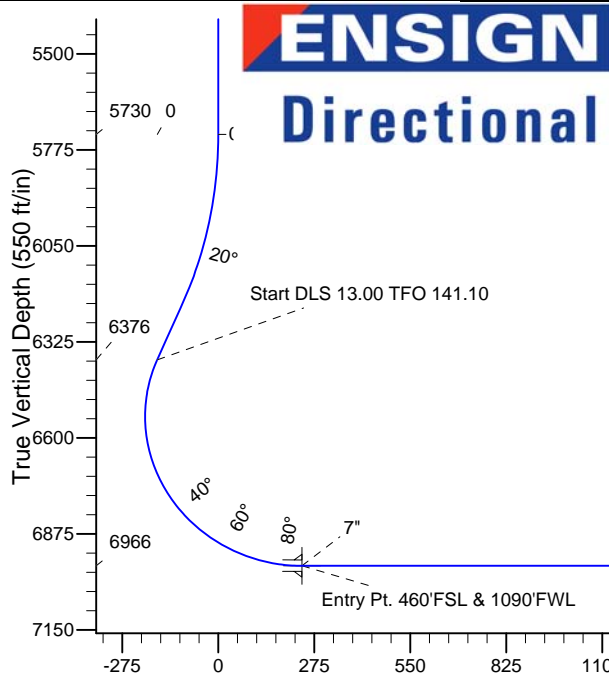
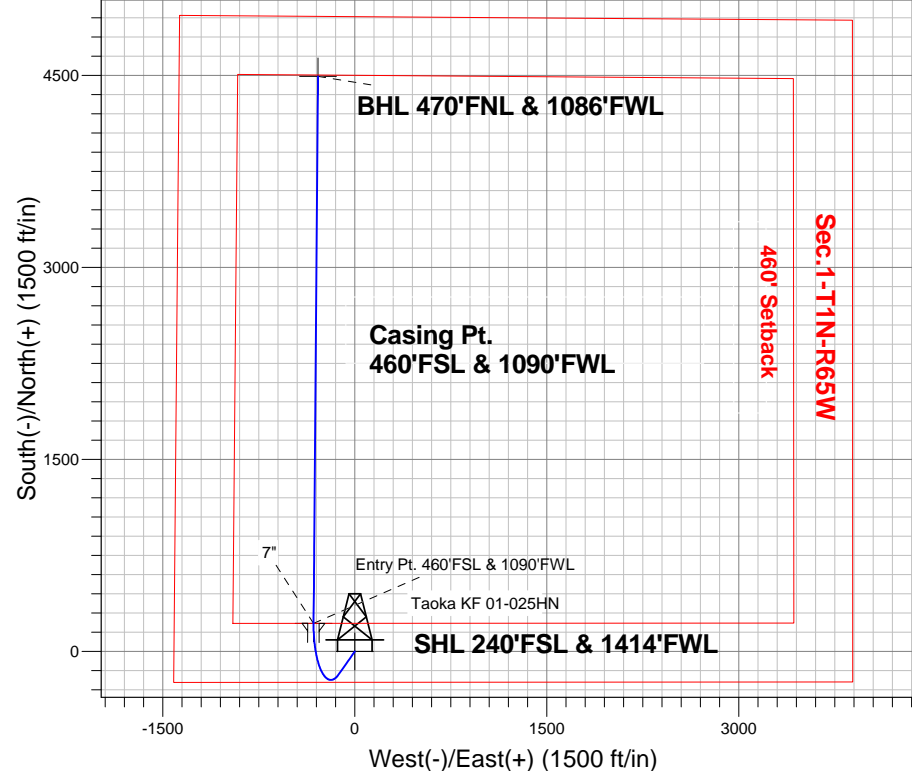
Azimuths to True North
Magnetic North: 8.43°

Magnetic Field
Strength: 52719.6snT
Dip Angle: 66.73°
Date: 11/15/2013
Model: IGRF2010

Taoka West Pad Sec.1-T1N-R65W
Taoka KF 01-025HN
Plan #1 (11-15-13)
11:09, November 19 2013

ANNOTATIONS

TVD	MD	Annotation
5730.0	5730.0	KOP - Start Build 6.00
6376.2	6424.9	Start DLS 13.00 TFO 141.10
6966.2	11576.7	TD at 11576.7



SECTION DETAILS

Sec	MD	Inc	Azi	TVD	+N/-S	+E/-W	DLeg	TFace	VSec	Target
1	0.0	0.00	0.00	0.0	0.0	0.0	0.00	0.00	0.0	
2	5730.0	0.00	0.00	5730.0	0.0	0.0	0.00	0.00	0.0	
3	6230.3	30.02	215.39	6207.8	-104.4	-74.2	6.00	215.39	-99.5	
4	6424.9	30.02	215.39	6376.2	-183.8	-130.6	0.00	0.00	-175.0	
5	7303.4	90.00	0.45	6966.2	219.7	-322.7	13.00	141.10	239.9	Entry Pt. 460'FSL & 1090'FWL
6	7304.6	90.00	0.46	6966.2	220.9	-322.7	1.00	90.00	241.1	
7	11576.7	90.00	0.46	6966.2	4492.9	-288.2	0.00	0.00	4502.1	BHL 470'FNL & 1086'FWL

Vertical Section at 356.33° (550 ft/in)



Great Western

SEC.1-T1N-R65W

Taoka West Pad Sec.1-T1N-R65W

Taoka KF 01-025HN

Wellbore #1

Plan: Plan #1 (11-15-13)

Standard Planning Report

19 November, 2013

Database:	Landmark	Local Co-ordinate Reference:	Well Taoka KF 01-025HN
Company:	Great Western	TVD Reference:	WELL @ 4976.2ft (RKB - 16.5')
Project:	SEC.1-T1N-R65W	MD Reference:	WELL @ 4976.2ft (RKB - 16.5')
Site:	Taoka West Pad Sec.1-T1N-R65W	North Reference:	True
Well:	Taoka KF 01-025HN	Survey Calculation Method:	Minimum Curvature
Wellbore:	Wellbore #1		
Design:	Plan #1 (11-15-13)		

Project	SEC.1-T1N-R65W, Weld County, CO		
Map System:	US State Plane 1983	System Datum:	Mean Sea Level
Geo Datum:	North American Datum 1983		Using Well Reference Point
Map Zone:	Colorado Northern Zone		Using geodetic scale factor

Site		Taoka West Pad Sec.1-T1N-R65W			
Site Position: From: Position Uncertainty:		Northing:	1,270,989.38 ft	Latitude:	40.073878
	Lat/Long	Easting:	3,247,135.46 ft	Longitude:	-104.616886
	0.0 ft	Slot Radius:	"	Grid Convergence:	0.57 °

Well	Taoka KF 01-025HN					
Well Position	+N-S	-0.1 ft	Northing:	1,270,990.23 ft	Latitude:	40.073878
	+E-W	90.1 ft	Easting:	3,247,225.56 ft	Longitude:	-104.616564
Position Uncertainty		0.0 ft	Wellhead Elevation:	ft	Ground Level:	4,959.7 ft

Wellbore	Wellbore #1				
Magnetics	Model Name	Sample Date	Declination (°)	Dip Angle (°)	Field Strength (nT)
	IGRF2010	11/15/2013	8.43	66.73	52,720

Design	Plan #1 (11-15-13)			
Audit Notes:				
Version:	Phase:	PROTOTYPE	Tie On Depth:	0.0
Vertical Section:	Depth From (TVD) (ft)	+N/-S (ft)	+E/-W (ft)	Direction (°)
	0.0	0.0	0.0	356.33

Plan Sections										
Measured Depth (ft)	Inclination (°)	Azimuth (°)	Vertical Depth (ft)	+N/-S (ft)	+E/-W (ft)	Dogleg Rate (°/100ft)	Build Rate (°/100ft)	Turn Rate (°/100ft)	TFO (°)	Target
0.0	0.00	0.00	0.0	0.0	0.0	0.00	0.00	0.00	0.00	
5,730.0	0.00	0.00	5,730.0	0.0	0.0	0.00	0.00	0.00	0.00	
6,230.3	30.02	215.39	6,207.8	-104.4	-74.2	6.00	6.00	0.00	215.39	
6,424.9	30.02	215.39	6,376.2	-183.8	-130.6	0.00	0.00	0.00	0.00	
7,303.4	90.00	0.45	6,966.2	219.7	-322.7	13.00	6.83	16.51	141.10	Entry Pt. 460'FSL &
7,304.6	90.00	0.46	6,966.2	220.9	-322.7	1.00	0.00	1.00	90.00	
11,576.7	90.00	0.46	6,966.2	4,492.9	-288.2	0.00	0.00	0.00	0.00	BHL 470'FNL & 10E

Database:	Landmark	Local Co-ordinate Reference:	Well Taoka KF 01-025HN
Company:	Great Western	TVD Reference:	WELL @ 4976.2ft (RKB - 16.5')
Project:	SEC.1-T1N-R65W	MD Reference:	WELL @ 4976.2ft (RKB - 16.5')
Site:	Taoka West Pad Sec.1-T1N-R65W	North Reference:	True
Well:	Taoka KF 01-025HN	Survey Calculation Method:	Minimum Curvature
Wellbore:	Wellbore #1		
Design:	Plan #1 (11-15-13)		

Planned Survey									
Measured Depth (ft)	Inclination (°)	Azimuth (°)	Vertical Depth (ft)	+N/-S (ft)	+E/-W (ft)	Vertical Section (ft)	Dogleg Rate (°/100ft)	Build Rate (°/100ft)	Turn Rate (°/100ft)
0.0	0.00	0.00	0.0	0.0	0.0	0.0	0.00	0.00	0.00
1.0	0.00	0.00	1.0	0.0	0.0	0.0	0.00	0.00	0.00
SHL 240'FSL & 1414'FWL									
100.0	0.00	0.00	100.0	0.0	0.0	0.0	0.00	0.00	0.00
200.0	0.00	0.00	200.0	0.0	0.0	0.0	0.00	0.00	0.00
300.0	0.00	0.00	300.0	0.0	0.0	0.0	0.00	0.00	0.00
400.0	0.00	0.00	400.0	0.0	0.0	0.0	0.00	0.00	0.00
500.0	0.00	0.00	500.0	0.0	0.0	0.0	0.00	0.00	0.00
600.0	0.00	0.00	600.0	0.0	0.0	0.0	0.00	0.00	0.00
700.0	0.00	0.00	700.0	0.0	0.0	0.0	0.00	0.00	0.00
800.0	0.00	0.00	800.0	0.0	0.0	0.0	0.00	0.00	0.00
900.0	0.00	0.00	900.0	0.0	0.0	0.0	0.00	0.00	0.00
1,000.0	0.00	0.00	1,000.0	0.0	0.0	0.0	0.00	0.00	0.00
1,100.0	0.00	0.00	1,100.0	0.0	0.0	0.0	0.00	0.00	0.00
1,200.0	0.00	0.00	1,200.0	0.0	0.0	0.0	0.00	0.00	0.00
1,300.0	0.00	0.00	1,300.0	0.0	0.0	0.0	0.00	0.00	0.00
1,400.0	0.00	0.00	1,400.0	0.0	0.0	0.0	0.00	0.00	0.00
1,500.0	0.00	0.00	1,500.0	0.0	0.0	0.0	0.00	0.00	0.00
1,600.0	0.00	0.00	1,600.0	0.0	0.0	0.0	0.00	0.00	0.00
1,700.0	0.00	0.00	1,700.0	0.0	0.0	0.0	0.00	0.00	0.00
1,800.0	0.00	0.00	1,800.0	0.0	0.0	0.0	0.00	0.00	0.00
1,900.0	0.00	0.00	1,900.0	0.0	0.0	0.0	0.00	0.00	0.00
2,000.0	0.00	0.00	2,000.0	0.0	0.0	0.0	0.00	0.00	0.00
2,100.0	0.00	0.00	2,100.0	0.0	0.0	0.0	0.00	0.00	0.00
2,200.0	0.00	0.00	2,200.0	0.0	0.0	0.0	0.00	0.00	0.00
2,300.0	0.00	0.00	2,300.0	0.0	0.0	0.0	0.00	0.00	0.00
2,400.0	0.00	0.00	2,400.0	0.0	0.0	0.0	0.00	0.00	0.00
2,500.0	0.00	0.00	2,500.0	0.0	0.0	0.0	0.00	0.00	0.00
2,600.0	0.00	0.00	2,600.0	0.0	0.0	0.0	0.00	0.00	0.00
2,700.0	0.00	0.00	2,700.0	0.0	0.0	0.0	0.00	0.00	0.00
2,800.0	0.00	0.00	2,800.0	0.0	0.0	0.0	0.00	0.00	0.00
2,900.0	0.00	0.00	2,900.0	0.0	0.0	0.0	0.00	0.00	0.00
3,000.0	0.00	0.00	3,000.0	0.0	0.0	0.0	0.00	0.00	0.00
3,100.0	0.00	0.00	3,100.0	0.0	0.0	0.0	0.00	0.00	0.00
3,200.0	0.00	0.00	3,200.0	0.0	0.0	0.0	0.00	0.00	0.00
3,300.0	0.00	0.00	3,300.0	0.0	0.0	0.0	0.00	0.00	0.00
3,400.0	0.00	0.00	3,400.0	0.0	0.0	0.0	0.00	0.00	0.00
3,500.0	0.00	0.00	3,500.0	0.0	0.0	0.0	0.00	0.00	0.00
3,600.0	0.00	0.00	3,600.0	0.0	0.0	0.0	0.00	0.00	0.00
3,700.0	0.00	0.00	3,700.0	0.0	0.0	0.0	0.00	0.00	0.00
3,800.0	0.00	0.00	3,800.0	0.0	0.0	0.0	0.00	0.00	0.00
3,900.0	0.00	0.00	3,900.0	0.0	0.0	0.0	0.00	0.00	0.00
4,000.0	0.00	0.00	4,000.0	0.0	0.0	0.0	0.00	0.00	0.00
4,100.0	0.00	0.00	4,100.0	0.0	0.0	0.0	0.00	0.00	0.00
4,200.0	0.00	0.00	4,200.0	0.0	0.0	0.0	0.00	0.00	0.00
4,300.0	0.00	0.00	4,300.0	0.0	0.0	0.0	0.00	0.00	0.00
4,400.0	0.00	0.00	4,400.0	0.0	0.0	0.0	0.00	0.00	0.00
4,500.0	0.00	0.00	4,500.0	0.0	0.0	0.0	0.00	0.00	0.00
4,600.0	0.00	0.00	4,600.0	0.0	0.0	0.0	0.00	0.00	0.00
4,700.0	0.00	0.00	4,700.0	0.0	0.0	0.0	0.00	0.00	0.00
4,800.0	0.00	0.00	4,800.0	0.0	0.0	0.0	0.00	0.00	0.00
4,900.0	0.00	0.00	4,900.0	0.0	0.0	0.0	0.00	0.00	0.00
5,000.0	0.00	0.00	5,000.0	0.0	0.0	0.0	0.00	0.00	0.00
5,100.0	0.00	0.00	5,100.0	0.0	0.0	0.0	0.00	0.00	0.00

Database:	Landmark	Local Co-ordinate Reference:	Well Taoka KF 01-025HN
Company:	Great Western	TVD Reference:	WELL @ 4976.2ft (RKB - 16.5')
Project:	SEC.1-T1N-R65W	MD Reference:	WELL @ 4976.2ft (RKB - 16.5')
Site:	Taoka West Pad Sec.1-T1N-R65W	North Reference:	True
Well:	Taoka KF 01-025HN	Survey Calculation Method:	Minimum Curvature
Wellbore:	Wellbore #1		
Design:	Plan #1 (11-15-13)		

Planned Survey									
Measured Depth (ft)	Inclination (°)	Azimuth (°)	Vertical Depth (ft)	+N/-S (ft)	+E/-W (ft)	Vertical Section (ft)	Dogleg Rate (°/100ft)	Build Rate (°/100ft)	Turn Rate (°/100ft)
5,200.0	0.00	0.00	5,200.0	0.0	0.0	0.0	0.00	0.00	0.00
5,300.0	0.00	0.00	5,300.0	0.0	0.0	0.0	0.00	0.00	0.00
5,400.0	0.00	0.00	5,400.0	0.0	0.0	0.0	0.00	0.00	0.00
5,500.0	0.00	0.00	5,500.0	0.0	0.0	0.0	0.00	0.00	0.00
5,600.0	0.00	0.00	5,600.0	0.0	0.0	0.0	0.00	0.00	0.00
5,700.0	0.00	0.00	5,700.0	0.0	0.0	0.0	0.00	0.00	0.00
5,730.0	0.00	0.00	5,730.0	0.0	0.0	0.0	0.00	0.00	0.00
KOP - Start Build 6.00									
5,800.0	4.20	215.39	5,799.9	-2.1	-1.5	-2.0	6.00	6.00	0.00
5,900.0	10.20	215.39	5,899.1	-12.3	-8.7	-11.7	6.00	6.00	0.00
6,000.0	16.20	215.39	5,996.4	-30.9	-22.0	-29.4	6.00	6.00	0.00
6,100.0	22.20	215.39	6,090.8	-57.7	-41.0	-55.0	6.00	6.00	0.00
6,200.0	28.20	215.39	6,181.3	-92.4	-65.6	-88.0	6.00	6.00	0.00
6,230.3	30.02	215.39	6,207.8	-104.4	-74.2	-99.5	6.00	6.00	0.00
6,300.0	30.02	215.39	6,268.1	-132.8	-94.4	-126.5	0.00	0.00	0.00
6,400.0	30.02	215.39	6,354.7	-173.6	-123.4	-165.4	0.00	0.00	0.00
6,424.9	30.02	215.39	6,376.2	-183.8	-130.6	-175.0	0.00	0.00	0.00
Start DLS 13.00 TFO 141.10									
6,500.0	23.17	231.11	6,443.4	-208.4	-153.0	-198.2	13.01	-9.12	20.92
6,600.0	18.37	265.86	6,537.2	-222.0	-184.2	-209.7	13.00	-4.80	34.76
6,700.0	21.55	303.50	6,631.6	-212.9	-215.3	-198.7	13.00	3.18	37.64
6,800.0	30.29	325.93	6,721.7	-181.8	-244.9	-165.7	13.00	8.74	22.43
6,900.0	41.18	338.22	6,802.8	-130.1	-271.4	-112.5	13.00	10.89	12.29
7,000.0	52.90	345.96	6,870.9	-60.5	-293.3	-41.6	13.00	11.72	7.73
7,100.0	64.99	351.57	6,922.4	23.3	-309.7	43.1	13.00	12.09	5.61
7,200.0	77.25	356.15	6,954.7	117.2	-319.7	137.4	13.00	12.26	4.59
7,300.0	89.58	0.31	6,966.2	216.3	-322.7	236.5	13.00	12.33	4.16
7,303.4	90.00	0.45	6,966.2	219.7	-322.7	239.9	12.93	12.28	4.06
7" - Entry Pt. 460'FSL & 1090'FWL									
7,304.6	90.00	0.46	6,966.2	220.9	-322.7	241.1	1.08	0.18	1.06
7,400.0	90.00	0.46	6,966.2	316.3	-321.9	336.3	0.00	0.00	0.00
7,500.0	90.00	0.46	6,966.2	416.3	-321.1	436.0	0.00	0.00	0.00
7,600.0	90.00	0.46	6,966.2	516.3	-320.3	535.7	0.00	0.00	0.00
7,700.0	90.00	0.46	6,966.2	616.3	-319.5	635.5	0.00	0.00	0.00
7,800.0	90.00	0.46	6,966.2	716.3	-318.7	735.2	0.00	0.00	0.00
7,900.0	90.00	0.46	6,966.2	816.3	-317.9	835.0	0.00	0.00	0.00
8,000.0	90.00	0.46	6,966.2	916.3	-317.1	934.7	0.00	0.00	0.00
8,100.0	90.00	0.46	6,966.2	1,016.3	-316.3	1,034.4	0.00	0.00	0.00
8,200.0	90.00	0.46	6,966.2	1,116.3	-315.4	1,134.2	0.00	0.00	0.00
8,300.0	90.00	0.46	6,966.2	1,216.3	-314.6	1,233.9	0.00	0.00	0.00
8,400.0	90.00	0.46	6,966.2	1,316.3	-313.8	1,333.7	0.00	0.00	0.00
8,500.0	90.00	0.46	6,966.2	1,416.3	-313.0	1,433.4	0.00	0.00	0.00
8,600.0	90.00	0.46	6,966.2	1,516.3	-312.2	1,533.1	0.00	0.00	0.00
8,700.0	90.00	0.46	6,966.2	1,616.3	-311.4	1,632.9	0.00	0.00	0.00
8,800.0	90.00	0.46	6,966.2	1,716.3	-310.6	1,732.6	0.00	0.00	0.00
8,900.0	90.00	0.46	6,966.2	1,816.3	-309.8	1,832.4	0.00	0.00	0.00
9,000.0	90.00	0.46	6,966.2	1,916.2	-309.0	1,932.1	0.00	0.00	0.00
9,100.0	90.00	0.46	6,966.2	2,016.2	-308.2	2,031.8	0.00	0.00	0.00
9,200.0	90.00	0.46	6,966.2	2,116.2	-307.4	2,131.6	0.00	0.00	0.00
9,300.0	90.00	0.46	6,966.2	2,216.2	-306.6	2,231.3	0.00	0.00	0.00
9,400.0	90.00	0.46	6,966.2	2,316.2	-305.8	2,331.1	0.00	0.00	0.00
9,500.0	90.00	0.46	6,966.2	2,416.2	-305.0	2,430.8	0.00	0.00	0.00
9,600.0	90.00	0.46	6,966.2	2,516.2	-304.2	2,530.5	0.00	0.00	0.00

Database:	Landmark	Local Co-ordinate Reference:	Well Taoka KF 01-025HN
Company:	Great Western	TVD Reference:	WELL @ 4976.2ft (RKB - 16.5')
Project:	SEC.1-T1N-R65W	MD Reference:	WELL @ 4976.2ft (RKB - 16.5')
Site:	Taoka West Pad Sec.1-T1N-R65W	North Reference:	True
Well:	Taoka KF 01-025HN	Survey Calculation Method:	Minimum Curvature
Wellbore:	Wellbore #1		
Design:	Plan #1 (11-15-13)		

Planned Survey										
Measured Depth (ft)	Inclination (°)	Azimuth (°)	Vertical Depth (ft)	+N/-S (ft)	+E/-W (ft)	Vertical Section (ft)	Dogleg Rate (°/100ft)	Build Rate (°/100ft)	Turn Rate (°/100ft)	
9,700.0	90.00	0.46	6,966.2	2,616.2	-303.3	2,630.3	0.00	0.00	0.00	
9,800.0	90.00	0.46	6,966.2	2,716.2	-302.5	2,730.0	0.00	0.00	0.00	
9,900.0	90.00	0.46	6,966.2	2,816.2	-301.7	2,829.8	0.00	0.00	0.00	
10,000.0	90.00	0.46	6,966.2	2,916.2	-300.9	2,929.5	0.00	0.00	0.00	
10,100.0	90.00	0.46	6,966.2	3,016.2	-300.1	3,029.2	0.00	0.00	0.00	
10,200.0	90.00	0.46	6,966.2	3,116.2	-299.3	3,129.0	0.00	0.00	0.00	
10,300.0	90.00	0.46	6,966.2	3,216.2	-298.5	3,228.7	0.00	0.00	0.00	
10,400.0	90.00	0.46	6,966.2	3,316.2	-297.7	3,328.5	0.00	0.00	0.00	
10,500.0	90.00	0.46	6,966.2	3,416.2	-296.9	3,428.2	0.00	0.00	0.00	
10,600.0	90.00	0.46	6,966.2	3,516.2	-296.1	3,527.9	0.00	0.00	0.00	
10,700.0	90.00	0.46	6,966.2	3,616.2	-295.3	3,627.7	0.00	0.00	0.00	
10,800.0	90.00	0.46	6,966.2	3,716.2	-294.5	3,727.4	0.00	0.00	0.00	
10,900.0	90.00	0.46	6,966.2	3,816.2	-293.7	3,827.2	0.00	0.00	0.00	
11,000.0	90.00	0.46	6,966.2	3,916.2	-292.9	3,926.9	0.00	0.00	0.00	
11,100.0	90.00	0.46	6,966.2	4,016.2	-292.1	4,026.6	0.00	0.00	0.00	
11,200.0	90.00	0.46	6,966.2	4,116.2	-291.2	4,126.4	0.00	0.00	0.00	
11,300.0	90.00	0.46	6,966.2	4,216.2	-290.4	4,226.1	0.00	0.00	0.00	
11,400.0	90.00	0.46	6,966.2	4,316.2	-289.6	4,325.9	0.00	0.00	0.00	
11,500.0	90.00	0.46	6,966.2	4,416.2	-288.8	4,425.6	0.00	0.00	0.00	
11,576.7	90.00	0.46	6,966.2	4,492.9	-288.2	4,502.1	0.00	0.00	0.00	
BHL 470'FNL & 1086'FWL										

Casing Points					
Measured Depth (ft)	Vertical Depth (ft)	Name	Casing Diameter (")	Hole Diameter (")	
7,303.4	6,966.2	7"	7	7-1/2	

Plan Annotations				
Measured Depth (ft)	Vertical Depth (ft)	+N/-S (ft)	+E/-W (ft)	Comment
5,730.0	5,730.0	0.0	0.0	KOP - Start Build 6.00
6,424.9	6,376.2	-183.8	-130.6	Start DLS 13.00 TFO 141.10
11,576.7	6,966.2	4,492.9	-288.2	TD at 11576.7



Great Western

SEC.1-T1N-R65W

Taoka West Pad Sec.1-T1N-R65W

Taoka KF 01-025HN

Wellbore #1

Plan #1 (11-15-13)

Anticollision Report

19 November, 2013

Company:	Great Western	Local Co-ordinate Reference:	Well Taoka KF 01-025HN
Project:	SEC.1-T1N-R65W	TVD Reference:	WELL @ 4976.2ft (RKB - 16.5')
Reference Site:	Taoka West Pad Sec.1-T1N-R65W	MD Reference:	WELL @ 4976.2ft (RKB - 16.5')
Site Error:	0.0ft	North Reference:	True
Reference Well:	Taoka KF 01-025HN	Survey Calculation Method:	Minimum Curvature
Well Error:	0.0ft	Output errors are at	2.00 sigma
Reference Wellbore	Wellbore #1	Database:	Landmark
Reference Design:	Plan #1 (11-15-13)	Offset TVD Reference:	Offset Datum

Reference	Plan #1 (11-15-13)		
Filter type:	NO GLOBAL FILTER: Using user defined selection & filtering criteria		
Interpolation Method:	MD Interval 100.0ft	Error Model:	ISCWSA
Depth Range:	Unlimited	Scan Method:	Closest Approach 3D
Results Limited by:	Maximum center-center distance of 1,000.0ft	Error Surface:	Elliptical Conic
Warning Levels Evaluated at:	2.00 Sigma		

Survey Tool Program	Date 11/18/2013			
From (ft)	To (ft)	Survey (Wellbore)	Tool Name	Description
0.0	11,576.7	Plan #1 (11-15-13) (Wellbore #1)	MWD	MWD - Standard

Summary						
Site Name	Reference Measured Depth (ft)	Offset Measured Depth (ft)	Distance Between Centres (ft)	Distance Between Ellipses (ft)	Separation Factor	Warning
Offset Well - Wellbore - Design						
Taoka West Pad Sec.1-T1N-R65W						
Taoka KF 01-021HN - Wellbore #1 - Plan #1 (11-15-13)	4,133.3	4,133.3	90.1	71.8	4.909	CC, ES
Taoka KF 01-021HN - Wellbore #1 - Plan #1 (11-15-13)	4,200.0	4,197.8	90.7	72.1	4.867	SF
Taoka KF 01-022HN - Wellbore #1 - Plan #1 (11-15-13)	4,833.4	4,833.4	59.9	38.4	2.785	CC, ES
Taoka KF 01-022HN - Wellbore #1 - Plan #1 (11-15-13)	4,900.0	4,898.5	60.5	38.7	2.776	SF
Taoka KF 01-023HC - Wellbore #1 - Plan #1 (11-15-13)	5,500.0	5,500.0	30.2	5.7	1.234	Level 2, CC, ES, SF
Taoka KF 01-027HN - Wellbore #1 - Plan #1 (11-15-13)	5,600.0	5,600.0	29.7	4.7	1.189	Level 2, CC, ES, SF
Taoka KF 01-028HC - Wellbore #1 - Plan #1 (11-18-13)	5,264.9	5,264.9	59.9	36.4	2.555	CC
Taoka KF 01-028HC - Wellbore #1 - Plan #1 (11-18-13)	5,300.0	5,299.9	59.9	36.3	2.538	ES, SF

Offset Design		Taoka West Pad Sec.1-T1N-R65W - Taoka KF 01-021HN - Wellbore #1 - Plan #1 (11-15-13)										Offset Site Error:		0.0 ft		
Survey Program: 0-MWD														Offset Well Error:		0.0 ft
Reference		Offset		Semi Major Axis			Distance									
Measured Depth	Vertical Depth	Measured Depth	Vertical Depth	Reference	Offset	Highside Toolface	Offset Wellbore Centre		Between Centres	Between Ellipses	Minimum Separation	Separation Factor	Warning			
Depth (ft)	Depth (ft)	Depth (ft)	Depth (ft)	(ft)	(ft)	(°)	+N/-S (ft)	+E/-W (ft)	(ft)	(ft)	(ft)					
0.0	0.0	0.0	0.0	0.0	0.0	-89.98	0.0	-90.1	90.1							
100.0	100.0	100.0	100.0	0.1	0.1	-89.98	0.0	-90.1	90.1	89.9	0.22	400.930				
200.0	200.0	200.0	200.0	0.3	0.3	-89.98	0.0	-90.1	90.1	89.4	0.67	133.643				
300.0	300.0	300.0	300.0	0.6	0.6	-89.98	0.0	-90.1	90.1	89.0	1.12	80.186				
400.0	400.0	400.0	400.0	0.8	0.8	-89.98	0.0	-90.1	90.1	88.5	1.57	57.276				
500.0	500.0	500.0	500.0	1.0	1.0	-89.98	0.0	-90.1	90.1	88.1	2.02	44.548				
600.0	600.0	600.0	600.0	1.2	1.2	-89.98	0.0	-90.1	90.1	87.6	2.47	36.448				
700.0	700.0	700.0	700.0	1.5	1.5	-89.98	0.0	-90.1	90.1	87.2	2.92	30.841				
800.0	800.0	800.0	800.0	1.7	1.7	-89.98	0.0	-90.1	90.1	86.7	3.37	26.729				
900.0	900.0	900.0	900.0	1.9	1.9	-89.98	0.0	-90.1	90.1	86.3	3.82	23.584				
1,000.0	1,000.0	1,000.0	1,000.0	2.1	2.1	-89.98	0.0	-90.1	90.1	85.8	4.27	21.102				
1,100.0	1,100.0	1,100.0	1,100.0	2.4	2.4	-89.98	0.0	-90.1	90.1	85.4	4.72	19.092				
1,200.0	1,200.0	1,200.0	1,200.0	2.6	2.6	-89.98	0.0	-90.1	90.1	84.9	5.17	17.432				
1,300.0	1,300.0	1,300.0	1,300.0	2.8	2.8	-89.98	0.0	-90.1	90.1	84.5	5.62	16.037				
1,400.0	1,400.0	1,400.0	1,400.0	3.0	3.0	-89.98	0.0	-90.1	90.1	84.0	6.07	14.849				
1,500.0	1,500.0	1,500.0	1,500.0	3.3	3.3	-89.98	0.0	-90.1	90.1	83.6	6.52	13.825				
1,600.0	1,600.0	1,600.0	1,600.0	3.5	3.5	-89.98	0.0	-90.1	90.1	83.1	6.97	12.933				
1,700.0	1,700.0	1,700.0	1,700.0	3.7	3.7	-89.98	0.0	-90.1	90.1	82.7	7.42	12.149				
1,800.0	1,800.0	1,800.0	1,800.0	3.9	3.9	-89.98	0.0	-90.1	90.1	82.2	7.87	11.455				
1,900.0	1,900.0	1,900.0	1,900.0	4.2	4.2	-89.98	0.0	-90.1	90.1	81.8	8.32	10.836				

CC - Min centre to center distance or convergent point, SF - min separation factor, ES - min ellipse separation

Company:	Great Western	Local Co-ordinate Reference:	Well Taoka KF 01-025HN
Project:	SEC.1-T1N-R65W	TVD Reference:	WELL @ 4976.2ft (RKB - 16.5')
Reference Site:	Taoka West Pad Sec.1-T1N-R65W	MD Reference:	WELL @ 4976.2ft (RKB - 16.5')
Site Error:	0.0ft	North Reference:	True
Reference Well:	Taoka KF 01-025HN	Survey Calculation Method:	Minimum Curvature
Well Error:	0.0ft	Output errors are at	2.00 sigma
Reference Wellbore	Wellbore #1	Database:	Landmark
Reference Design:	Plan #1 (11-15-13)	Offset TVD Reference:	Offset Datum

Offset Design													Offset Site Error:	0.0 ft
Survey Program: 0-MWD													Offset Well Error:	0.0 ft
Reference		Offset		Semi Major Axis			Distance							Warning
Measured Depth (ft)	Vertical Depth (ft)	Measured Depth (ft)	Vertical Depth (ft)	Reference (ft)	Offset (ft)	Highside Toolface (°)	Offset Wellbore Centre +N/-S (ft)	+E/-W (ft)	Between Centres (ft)	Between Ellipses (ft)	Minimum Separation (ft)	Separation Factor		
2,000.0	2,000.0	2,000.0	2,000.0	4.4	4.4	-89.98	0.0	-90.1	90.1	81.3	8.77	10.280		
2,100.0	2,100.0	2,100.0	2,100.0	4.6	4.6	-89.98	0.0	-90.1	90.1	80.9	9.22	9.779		
2,200.0	2,200.0	2,200.0	2,200.0	4.8	4.8	-89.98	0.0	-90.1	90.1	80.5	9.66	9.324		
2,300.0	2,300.0	2,300.0	2,300.0	5.1	5.1	-89.98	0.0	-90.1	90.1	80.0	10.11	8.910		
2,400.0	2,400.0	2,400.0	2,400.0	5.3	5.3	-89.98	0.0	-90.1	90.1	79.6	10.56	8.530		
2,500.0	2,500.0	2,500.0	2,500.0	5.5	5.5	-89.98	0.0	-90.1	90.1	79.1	11.01	8.182		
2,600.0	2,600.0	2,600.0	2,600.0	5.7	5.7	-89.98	0.0	-90.1	90.1	78.7	11.46	7.861		
2,700.0	2,700.0	2,700.0	2,700.0	6.0	6.0	-89.98	0.0	-90.1	90.1	78.2	11.91	7.565		
2,800.0	2,800.0	2,800.0	2,800.0	6.2	6.2	-89.98	0.0	-90.1	90.1	77.8	12.36	7.290		
2,900.0	2,900.0	2,900.0	2,900.0	6.4	6.4	-89.98	0.0	-90.1	90.1	77.3	12.81	7.034		
3,000.0	3,000.0	3,000.0	3,000.0	6.6	6.6	-89.98	0.0	-90.1	90.1	76.9	13.26	6.795		
3,100.0	3,100.0	3,100.0	3,100.0	6.9	6.9	-89.98	0.0	-90.1	90.1	76.4	13.71	6.573		
3,200.0	3,200.0	3,200.0	3,200.0	7.1	7.1	-89.98	0.0	-90.1	90.1	76.0	14.16	6.364		
3,300.0	3,300.0	3,300.0	3,300.0	7.3	7.3	-89.98	0.0	-90.1	90.1	75.5	14.61	6.168		
3,400.0	3,400.0	3,400.0	3,400.0	7.5	7.5	-89.98	0.0	-90.1	90.1	75.1	15.06	5.984		
3,500.0	3,500.0	3,500.0	3,500.0	7.8	7.8	-89.98	0.0	-90.1	90.1	74.6	15.51	5.811		
3,600.0	3,600.0	3,600.0	3,600.0	8.0	8.0	-89.98	0.0	-90.1	90.1	74.2	15.96	5.647		
3,700.0	3,700.0	3,700.0	3,700.0	8.2	8.2	-89.98	0.0	-90.1	90.1	73.7	16.41	5.492		
3,800.0	3,800.0	3,800.0	3,800.0	8.4	8.4	-89.98	0.0	-90.1	90.1	73.3	16.86	5.346		
3,900.0	3,900.0	3,900.0	3,900.0	8.7	8.7	-89.98	0.0	-90.1	90.1	72.8	17.31	5.207		
4,000.0	4,000.0	4,000.0	4,000.0	8.9	8.9	-89.98	0.0	-90.1	90.1	72.4	17.76	5.075		
4,100.0	4,100.0	4,100.0	4,100.0	9.1	9.1	-89.98	0.0	-90.1	90.1	71.9	18.21	4.950		
4,133.3	4,133.3	4,133.3	4,133.3	9.2	9.2	-89.98	0.0	-90.1	90.1	71.8	18.36	4.909 CC, ES		
4,200.0	4,200.0	4,197.8	4,197.8	9.3	9.3	-90.05	-0.1	-90.7	90.7	72.1	18.64	4.867 SF		
4,300.0	4,300.0	4,293.1	4,293.0	9.6	9.5	-90.62	-1.0	-95.4	95.6	76.6	19.05	5.020		
4,400.0	4,400.0	4,387.7	4,387.1	9.8	9.7	-91.60	-2.9	-104.6	105.4	86.0	19.46	5.417		
4,500.0	4,500.0	4,481.2	4,479.5	10.0	9.9	-92.77	-5.7	-118.2	120.1	100.2	19.87	6.042		
4,600.0	4,600.0	4,573.1	4,569.6	10.2	10.1	-93.93	-9.3	-135.8	139.5	119.2	20.29	6.877		
4,700.0	4,700.0	4,663.0	4,656.9	10.5	10.3	-94.99	-13.7	-157.2	163.6	142.9	20.70	7.901		
4,800.0	4,800.0	4,750.7	4,740.8	10.7	10.6	-95.89	-18.8	-181.9	192.2	171.1	21.13	9.097		
4,900.0	4,900.0	4,835.8	4,821.1	10.9	10.9	-96.65	-24.4	-209.4	225.1	203.6	21.56	10.443		
5,000.0	5,000.0	4,918.2	4,897.6	11.1	11.2	-97.28	-30.6	-239.4	262.2	240.2	21.99	11.920		
5,100.0	5,100.0	5,000.0	4,972.2	11.4	11.5	-97.80	-37.3	-272.4	303.2	280.7	22.45	13.506		
5,200.0	5,200.0	5,074.1	5,038.4	11.6	11.9	-98.21	-44.0	-304.9	347.8	324.9	22.90	15.188		
5,300.0	5,300.0	5,147.4	5,102.7	11.8	12.4	-98.56	-51.1	-339.5	396.0	372.6	23.37	16.943		
5,400.0	5,400.0	5,229.4	5,173.3	12.0	12.9	-98.88	-59.4	-380.2	446.6	422.7	23.90	18.690		
5,500.0	5,500.0	5,315.5	5,247.5	12.2	13.5	-99.16	-68.2	-423.1	497.4	472.9	24.45	20.343		
5,600.0	5,600.0	5,401.6	5,321.7	12.5	14.2	-99.38	-77.0	-465.9	548.1	523.1	25.03	21.903		
5,700.0	5,700.0	5,487.8	5,395.9	12.7	14.9	-99.57	-85.8	-508.8	598.9	573.3	25.62	23.373		
5,800.0	5,799.9	5,574.8	5,470.9	12.9	15.6	43.44	-94.7	-552.1	648.1	623.0	25.04	25.877		
5,900.0	5,899.1	5,664.9	5,548.5	13.1	16.4	42.17	-103.8	-596.9	690.8	665.5	25.35	27.248		
6,000.0	5,996.4	5,757.2	5,628.0	13.3	17.2	41.81	-113.3	-642.8	726.6	701.1	25.57	28.419		
6,100.0	6,090.8	5,850.7	5,708.6	13.5	18.1	42.20	-122.8	-689.4	755.5	729.8	25.72	29.375		
6,200.0	6,181.3	5,944.4	5,789.3	13.7	19.0	43.26	-132.3	-736.0	777.6	751.7	25.87	30.060		
6,300.0	6,268.1	6,037.6	5,869.6	14.0	19.9	45.25	-141.9	-782.4	795.1	768.7	26.41	30.104		
6,400.0	6,354.7	6,130.8	5,949.8	14.4	20.8	47.40	-151.4	-828.7	813.6	786.4	27.18	29.932		
6,500.0	6,443.4	6,225.5	6,031.4	14.9	21.7	36.97	-161.0	-875.9	833.4	805.2	28.21	29.545		
6,600.0	6,537.2	6,323.3	6,115.6	15.2	22.7	7.16	-171.0	-924.5	853.5	824.4	29.12	29.306		
6,700.0	6,631.6	6,419.1	6,198.2	15.6	23.7	-27.14	-180.8	-972.2	872.8	843.1	29.74	29.351		
6,800.0	6,721.7	6,508.2	6,274.9	15.8	24.6	-47.36	-189.9	-1,016.6	891.7	861.6	30.07	29.655		
6,900.0	6,802.8	6,586.0	6,342.0	15.9	25.4	-57.76	-197.8	-1,055.3	911.9	881.6	30.27	30.129		
7,000.0	6,870.9	6,648.5	6,395.8	16.0	26.1	-62.93	-204.2	-1,086.4	935.6	905.1	30.44	30.730		

CC - Min centre to center distance or convergent point, SF - min separation factor, ES - min ellipse separation

Company:	Great Western	Local Co-ordinate Reference:	Well Taoka KF 01-025HN
Project:	SEC.1-T1N-R65W	TVD Reference:	WELL @ 4976.2ft (RKB - 16.5')
Reference Site:	Taoka West Pad Sec.1-T1N-R65W	MD Reference:	WELL @ 4976.2ft (RKB - 16.5')
Site Error:	0.0ft	North Reference:	True
Reference Well:	Taoka KF 01-025HN	Survey Calculation Method:	Minimum Curvature
Well Error:	0.0ft	Output errors are at	2.00 sigma
Reference Wellbore	Wellbore #1	Database:	Landmark
Reference Design:	Plan #1 (11-15-13)	Offset TVD Reference:	Offset Datum

Offset Design Taoka West Pad Sec.1-T1N-R65W - Taoka KF 01-021HN - Wellbore #1 - Plan #1 (11-15-13)												Offset Site Error:	0.0 ft
Survey Program: 0-MWD												Offset Well Error:	0.0 ft
Reference	Offset	Semi Major Axis			Distance								Warning
Measured Depth (ft)	Vertical Depth (ft)	Measured Depth (ft)	Vertical Depth (ft)	Reference (ft)	Offset (ft)	Highside Toolface (°)	Offset Wellbore Centre +N/-S (ft)	+E/-W (ft)	Between Centres (ft)	Between Ellipses (ft)	Minimum Separation (ft)	Separation Factor	
7,100.0	6,922.4	6,692.5	6,433.7	16.2	26.5	-64.36	-208.6	-1,108.3	964.5	934.0	30.58	31.542	
7,200.0	6,954.7	6,715.7	6,453.7	16.5	26.8	-62.43	-211.0	-1,119.8	999.5	969.0	30.48	32.796	

Company:	Great Western	Local Co-ordinate Reference:	Well Taoka KF 01-025HN
Project:	SEC.1-T1N-R65W	TVD Reference:	WELL @ 4976.2ft (RKB - 16.5')
Reference Site:	Taoka West Pad Sec.1-T1N-R65W	MD Reference:	WELL @ 4976.2ft (RKB - 16.5')
Site Error:	0.0ft	North Reference:	True
Reference Well:	Taoka KF 01-025HN	Survey Calculation Method:	Minimum Curvature
Well Error:	0.0ft	Output errors are at	2.00 sigma
Reference Wellbore	Wellbore #1	Database:	Landmark
Reference Design:	Plan #1 (11-15-13)	Offset TVD Reference:	Offset Datum

Offset Design Taoka West Pad Sec.1-T1N-R65W - Taoka KF 01-022HN - Wellbore #1 - Plan #1 (11-15-13)													Offset Site Error:	0.0 ft
Survey Program: 0-MWD													Offset Well Error:	0.0 ft
Reference		Offset		Semi Major Axis			Distance							Warning
Measured Depth (ft)	Vertical Depth (ft)	Measured Depth (ft)	Vertical Depth (ft)	Reference (ft)	Offset (ft)	Highside Toolface (°)	Offset Wellbore Centre +N/-S (ft)	+E/-W (ft)	Between Centres (ft)	Between Ellipses (ft)	Minimum Separation (ft)	Separation Factor		
0.0	0.0	0.0	0.0	0.0	0.0	-89.98	0.0	-59.9	59.9					
100.0	100.0	100.0	100.0	0.1	0.1	-89.98	0.0	-59.9	59.9	59.7	0.22	266.456		
200.0	200.0	200.0	200.0	0.3	0.3	-89.98	0.0	-59.9	59.9	59.2	0.67	88.819		
300.0	300.0	300.0	300.0	0.6	0.6	-89.98	0.0	-59.9	59.9	58.8	1.12	53.291		
400.0	400.0	400.0	400.0	0.8	0.8	-89.98	0.0	-59.9	59.9	58.3	1.57	38.065		
500.0	500.0	500.0	500.0	1.0	1.0	-89.98	0.0	-59.9	59.9	57.9	2.02	29.606		
600.0	600.0	600.0	600.0	1.2	1.2	-89.98	0.0	-59.9	59.9	57.4	2.47	24.223		
700.0	700.0	700.0	700.0	1.5	1.5	-89.98	0.0	-59.9	59.9	57.0	2.92	20.497		
800.0	800.0	800.0	800.0	1.7	1.7	-89.98	0.0	-59.9	59.9	56.5	3.37	17.764		
900.0	900.0	900.0	900.0	1.9	1.9	-89.98	0.0	-59.9	59.9	56.1	3.82	15.674		
1,000.0	1,000.0	1,000.0	1,000.0	2.1	2.1	-89.98	0.0	-59.9	59.9	55.6	4.27	14.024		
1,100.0	1,100.0	1,100.0	1,100.0	2.4	2.4	-89.98	0.0	-59.9	59.9	55.2	4.72	12.688		
1,200.0	1,200.0	1,200.0	1,200.0	2.6	2.6	-89.98	0.0	-59.9	59.9	54.7	5.17	11.585		
1,300.0	1,300.0	1,300.0	1,300.0	2.8	2.8	-89.98	0.0	-59.9	59.9	54.3	5.62	10.658		
1,400.0	1,400.0	1,400.0	1,400.0	3.0	3.0	-89.98	0.0	-59.9	59.9	53.8	6.07	9.869		
1,500.0	1,500.0	1,500.0	1,500.0	3.3	3.3	-89.98	0.0	-59.9	59.9	53.4	6.52	9.188		
1,600.0	1,600.0	1,600.0	1,600.0	3.5	3.5	-89.98	0.0	-59.9	59.9	52.9	6.97	8.595		
1,700.0	1,700.0	1,700.0	1,700.0	3.7	3.7	-89.98	0.0	-59.9	59.9	52.5	7.42	8.074		
1,800.0	1,800.0	1,800.0	1,800.0	3.9	3.9	-89.98	0.0	-59.9	59.9	52.0	7.87	7.613		
1,900.0	1,900.0	1,900.0	1,900.0	4.2	4.2	-89.98	0.0	-59.9	59.9	51.6	8.32	7.202		
2,000.0	2,000.0	2,000.0	2,000.0	4.4	4.4	-89.98	0.0	-59.9	59.9	51.1	8.77	6.832		
2,100.0	2,100.0	2,100.0	2,100.0	4.6	4.6	-89.98	0.0	-59.9	59.9	50.7	9.22	6.499		
2,200.0	2,200.0	2,200.0	2,200.0	4.8	4.8	-89.98	0.0	-59.9	59.9	50.2	9.66	6.197		
2,300.0	2,300.0	2,300.0	2,300.0	5.1	5.1	-89.98	0.0	-59.9	59.9	49.8	10.11	5.921		
2,400.0	2,400.0	2,400.0	2,400.0	5.3	5.3	-89.98	0.0	-59.9	59.9	49.3	10.56	5.669		
2,500.0	2,500.0	2,500.0	2,500.0	5.5	5.5	-89.98	0.0	-59.9	59.9	48.9	11.01	5.438		
2,600.0	2,600.0	2,600.0	2,600.0	5.7	5.7	-89.98	0.0	-59.9	59.9	48.4	11.46	5.225		
2,700.0	2,700.0	2,700.0	2,700.0	6.0	6.0	-89.98	0.0	-59.9	59.9	48.0	11.91	5.027		
2,800.0	2,800.0	2,800.0	2,800.0	6.2	6.2	-89.98	0.0	-59.9	59.9	47.5	12.36	4.845		
2,900.0	2,900.0	2,900.0	2,900.0	6.4	6.4	-89.98	0.0	-59.9	59.9	47.1	12.81	4.675		
3,000.0	3,000.0	3,000.0	3,000.0	6.6	6.6	-89.98	0.0	-59.9	59.9	46.6	13.26	4.516		
3,100.0	3,100.0	3,100.0	3,100.0	6.9	6.9	-89.98	0.0	-59.9	59.9	46.2	13.71	4.368		
3,200.0	3,200.0	3,200.0	3,200.0	7.1	7.1	-89.98	0.0	-59.9	59.9	45.7	14.16	4.229		
3,300.0	3,300.0	3,300.0	3,300.0	7.3	7.3	-89.98	0.0	-59.9	59.9	45.3	14.61	4.099		
3,400.0	3,400.0	3,400.0	3,400.0	7.5	7.5	-89.98	0.0	-59.9	59.9	44.8	15.06	3.977		
3,500.0	3,500.0	3,500.0	3,500.0	7.8	7.8	-89.98	0.0	-59.9	59.9	44.4	15.51	3.862		
3,600.0	3,600.0	3,600.0	3,600.0	8.0	8.0	-89.98	0.0	-59.9	59.9	43.9	15.96	3.753		
3,700.0	3,700.0	3,700.0	3,700.0	8.2	8.2	-89.98	0.0	-59.9	59.9	43.5	16.41	3.650		
3,800.0	3,800.0	3,800.0	3,800.0	8.4	8.4	-89.98	0.0	-59.9	59.9	43.0	16.86	3.553		
3,900.0	3,900.0	3,900.0	3,900.0	8.7	8.7	-89.98	0.0	-59.9	59.9	42.6	17.31	3.460		
4,000.0	4,000.0	4,000.0	4,000.0	8.9	8.9	-89.98	0.0	-59.9	59.9	42.1	17.76	3.373		
4,100.0	4,100.0	4,100.0	4,100.0	9.1	9.1	-89.98	0.0	-59.9	59.9	41.7	18.21	3.290		
4,200.0	4,200.0	4,200.0	4,200.0	9.3	9.3	-89.98	0.0	-59.9	59.9	41.2	18.66	3.210		
4,300.0	4,300.0	4,300.0	4,300.0	9.6	9.6	-89.98	0.0	-59.9	59.9	40.8	19.11	3.135		
4,400.0	4,400.0	4,400.0	4,400.0	9.8	9.8	-89.98	0.0	-59.9	59.9	40.3	19.55	3.063		
4,500.0	4,500.0	4,500.0	4,500.0	10.0	10.0	-89.98	0.0	-59.9	59.9	39.9	20.00	2.994		
4,600.0	4,600.0	4,600.0	4,600.0	10.2	10.2	-89.98	0.0	-59.9	59.9	39.4	20.45	2.928		
4,700.0	4,700.0	4,700.0	4,700.0	10.5	10.5	-89.98	0.0	-59.9	59.9	39.0	20.90	2.865		
4,800.0	4,800.0	4,800.0	4,800.0	10.7	10.7	-89.98	0.0	-59.9	59.9	38.5	21.35	2.805		
4,833.4	4,833.4	4,833.4	4,833.4	10.8	10.8	-89.98	0.0	-59.9	59.9	38.4	21.50	2.785 CC, ES		
4,900.0	4,900.0	4,898.5	4,898.5	10.9	10.9	-90.16	-0.2	-60.5	60.5	38.7	21.79	2.776 SF		
5,000.0	5,000.0	4,995.4	4,995.3	11.1	11.1	-91.55	-1.8	-65.1	65.3	43.1	22.20	2.943		

CC - Min centre to center distance or convergent point, SF - min separation factor, ES - min ellipse separation

Company:	Great Western	Local Co-ordinate Reference:	Well Taoka KF 01-025HN
Project:	SEC.1-T1N-R65W	TVD Reference:	WELL @ 4976.2ft (RKB - 16.5')
Reference Site:	Taoka West Pad Sec.1-T1N-R65W	MD Reference:	WELL @ 4976.2ft (RKB - 16.5')
Site Error:	0.0ft	North Reference:	True
Reference Well:	Taoka KF 01-025HN	Survey Calculation Method:	Minimum Curvature
Well Error:	0.0ft	Output errors are at	2.00 sigma
Reference Wellbore	Wellbore #1	Database:	Landmark
Reference Design:	Plan #1 (11-15-13)	Offset TVD Reference:	Offset Datum

Offset Design												Offset Site Error:	0.0ft
Survey Program: 0-MWD												Offset Well Error:	0.0ft
Reference		Offset		Semi Major Axis			Distance						
Measured Depth (ft)	Vertical Depth (ft)	Measured Depth (ft)	Vertical Depth (ft)	Reference (ft)	Offset (ft)	Highside Toolface (°)	Offset Wellbore Centre +N/-S (ft)	+E/-W (ft)	Between Centres (ft)	Between Ellipses (ft)	Minimum Separation (ft)	Separation Factor	Warning
5,100.0	5,100.0	5,091.5	5,090.9	11.4	11.3	-93.76	-4.9	-74.3	75.0	52.4	22.61	3.320	
5,200.0	5,200.0	5,186.4	5,184.7	11.6	11.5	-96.17	-9.5	-87.9	89.7	66.7	23.02	3.897	
5,300.0	5,300.0	5,279.6	5,276.0	11.8	11.7	-98.36	-15.5	-105.4	109.2	85.8	23.43	4.663	
5,400.0	5,400.0	5,370.8	5,364.4	12.0	11.9	-100.17	-22.7	-126.7	133.6	109.7	23.84	5.601	
5,500.0	5,500.0	5,459.7	5,449.4	12.2	12.1	-101.61	-31.1	-151.2	162.5	138.2	24.26	6.697	
5,600.0	5,600.0	5,545.9	5,530.6	12.5	12.4	-102.75	-40.4	-178.6	195.8	171.1	24.69	7.931	
5,700.0	5,700.0	5,629.2	5,607.7	12.7	12.7	-103.63	-50.5	-208.3	233.3	208.2	25.12	9.288	
5,800.0	5,799.9	5,710.2	5,681.4	12.9	13.0	39.45	-61.4	-240.2	273.0	247.7	25.31	10.786	
5,900.0	5,899.1	5,790.9	5,753.3	13.1	13.4	38.75	-73.2	-274.9	309.5	284.0	25.49	12.141	
6,000.0	5,996.4	5,872.6	5,824.5	13.3	13.9	39.04	-86.1	-312.9	342.4	316.9	25.56	13.396	
6,100.0	6,090.8	5,967.5	5,906.3	13.5	14.5	40.51	-101.6	-358.3	369.7	344.1	25.60	14.440	
6,200.0	6,181.3	6,063.0	5,988.7	13.7	15.1	42.89	-117.2	-404.1	390.2	364.5	25.68	15.191	
6,300.0	6,268.1	6,158.3	6,070.8	14.0	15.8	46.31	-132.7	-449.7	406.4	380.1	26.26	15.473	
6,400.0	6,354.7	6,253.5	6,153.0	14.4	16.6	49.71	-148.3	-495.3	423.8	396.7	27.10	15.640	
6,500.0	6,443.4	6,349.9	6,236.2	14.9	17.4	39.84	-164.0	-541.5	442.5	414.4	28.09	15.752	
6,600.0	6,537.2	6,448.0	6,320.8	15.2	18.2	9.01	-180.0	-588.4	460.5	431.7	28.81	15.984	
6,700.0	6,631.6	6,542.8	6,402.6	15.6	19.0	-27.39	-195.4	-633.8	477.4	448.2	29.20	16.352	
6,800.0	6,721.7	6,629.6	6,477.4	15.8	19.8	-50.07	-209.6	-675.4	495.7	466.3	29.44	16.840	
6,900.0	6,802.8	6,712.0	6,548.7	15.9	20.5	-62.98	-221.5	-714.9	519.3	489.6	29.74	17.465	
7,000.0	6,870.9	6,815.3	6,638.8	16.0	21.3	-71.86	-217.5	-764.8	548.4	518.2	30.19	18.165	
7,100.0	6,922.4	6,952.5	6,752.8	16.2	22.1	-79.26	-175.6	-827.5	580.1	549.3	30.77	18.854	
7,200.0	6,954.7	7,155.9	6,888.4	16.5	23.1	-86.39	-46.1	-901.5	607.9	576.5	31.44	19.338	
7,300.0	6,966.2	7,442.8	6,966.2	17.0	23.9	-90.00	221.8	-942.3	619.6	586.7	32.87	18.853	
7,400.0	6,966.2	7,542.8	6,966.2	17.5	24.2	-90.00	321.8	-941.4	619.5	585.4	34.11	18.163	
7,500.0	6,966.2	7,642.8	6,966.2	18.4	24.6	-90.00	421.7	-940.5	619.4	583.7	35.73	17.338	
7,600.0	6,966.2	7,742.8	6,966.2	19.3	25.2	-90.00	521.7	-939.6	619.4	581.7	37.67	16.444	
7,700.0	6,966.2	7,842.8	6,966.2	20.4	25.9	-90.00	621.7	-938.7	619.3	579.4	39.88	15.529	
7,800.0	6,966.2	7,942.8	6,966.2	21.6	26.7	-90.00	721.7	-937.9	619.2	576.9	42.32	14.631	
7,900.0	6,966.2	8,042.8	6,966.2	22.9	27.7	-90.00	821.7	-937.0	619.1	574.2	44.96	13.771	
8,000.0	6,966.2	8,142.8	6,966.2	24.3	28.8	-90.00	921.7	-936.1	619.1	571.3	47.76	12.962	
8,100.0	6,966.2	8,242.8	6,966.2	25.7	29.9	-90.00	1,021.7	-935.2	619.0	568.3	50.69	12.210	
8,200.0	6,966.2	8,342.8	6,966.2	27.2	31.2	-90.00	1,121.7	-934.3	618.9	565.2	53.74	11.517	
8,300.0	6,966.2	8,442.8	6,966.2	28.8	32.5	-90.00	1,221.7	-933.5	618.9	562.0	56.88	10.880	
8,400.0	6,966.2	8,542.8	6,966.2	30.4	33.9	-90.00	1,321.7	-932.6	618.8	558.7	60.10	10.295	
8,500.0	6,966.2	8,642.8	6,966.2	32.0	35.3	-90.00	1,421.7	-931.7	618.7	555.3	63.39	9.760	
8,600.0	6,966.2	8,742.8	6,966.2	33.7	36.8	-90.00	1,521.7	-930.8	618.6	551.9	66.74	9.270	
8,700.0	6,966.2	8,842.8	6,966.2	35.4	38.4	-90.00	1,621.7	-929.9	618.6	548.4	70.13	8.820	
8,800.0	6,966.2	8,942.8	6,966.2	37.1	39.9	-90.00	1,721.7	-929.1	618.5	544.9	73.57	8.407	
8,900.0	6,966.2	9,042.8	6,966.2	38.8	41.5	-90.00	1,821.7	-928.2	618.4	541.4	77.04	8.027	
9,000.0	6,966.2	9,142.8	6,966.2	40.5	43.1	-90.00	1,921.7	-927.3	618.3	537.8	80.55	7.676	
9,100.0	6,966.2	9,242.8	6,966.2	42.3	44.8	-90.00	2,021.7	-926.4	618.3	534.2	84.08	7.353	
9,200.0	6,966.2	9,342.8	6,966.2	44.1	46.5	-90.00	2,121.7	-925.5	618.2	530.5	87.64	7.054	
9,300.0	6,966.2	9,442.8	6,966.2	45.9	48.1	-90.00	2,221.7	-924.7	618.1	526.9	91.22	6.776	
9,400.0	6,966.2	9,542.8	6,966.2	47.6	49.8	-90.00	2,321.7	-923.8	618.0	523.2	94.82	6.518	
9,500.0	6,966.2	9,642.8	6,966.2	49.4	51.6	-90.00	2,421.7	-922.9	618.0	519.5	98.44	6.278	
9,600.0	6,966.2	9,742.8	6,966.2	51.3	53.3	-90.00	2,521.7	-922.0	617.9	515.8	102.07	6.053	
9,700.0	6,966.2	9,842.8	6,966.2	53.1	55.0	-90.00	2,621.7	-921.1	617.8	512.1	105.72	5.844	
9,800.0	6,966.2	9,942.8	6,966.2	54.9	56.8	-90.00	2,721.7	-920.3	617.8	508.4	109.38	5.648	
9,900.0	6,966.2	10,042.8	6,966.2	56.7	58.6	-90.00	2,821.7	-919.4	617.7	504.6	113.05	5.464	
10,000.0	6,966.2	10,142.8	6,966.2	58.6	60.3	-90.00	2,921.7	-918.5	617.6	500.9	116.73	5.291	
10,100.0	6,966.2	10,242.8	6,966.2	60.4	62.1	-90.00	3,021.6	-917.6	617.5	497.1	120.42	5.128	
10,200.0	6,966.2	10,342.8	6,966.2	62.2	63.9	-90.00	3,121.6	-916.7	617.5	493.3	124.11	4.975	

CC - Min centre to center distance or convergent point, SF - min separation factor, ES - min ellipse separation

Company:	Great Western	Local Co-ordinate Reference:	Well Taoka KF 01-025HN
Project:	SEC.1-T1N-R65W	TVD Reference:	WELL @ 4976.2ft (RKB - 16.5')
Reference Site:	Taoka West Pad Sec.1-T1N-R65W	MD Reference:	WELL @ 4976.2ft (RKB - 16.5')
Site Error:	0.0ft	North Reference:	True
Reference Well:	Taoka KF 01-025HN	Survey Calculation Method:	Minimum Curvature
Well Error:	0.0ft	Output errors are at	2.00 sigma
Reference Wellbore	Wellbore #1	Database:	Landmark
Reference Design:	Plan #1 (11-15-13)	Offset TVD Reference:	Offset Datum

Offset Design Taoka West Pad Sec.1-T1N-R65W - Taoka KF 01-022HN - Wellbore #1 - Plan #1 (11-15-13)												Offset Site Error:	0.0 ft
Survey Program: 0-MWD												Offset Well Error:	0.0 ft
Reference		Offset		Semi Major Axis			Distance						
Measured Depth (ft)	Vertical Depth (ft)	Measured Depth (ft)	Vertical Depth (ft)	Reference (ft)	Offset (ft)	Highside Toolface (°)	Offset Wellbore Centre +N/-S (ft)	+E/-W (ft)	Between Centres (ft)	Between Ellipses (ft)	Minimum Separation (ft)	Separation Factor	Warning
10,300.0	6,966.2	10,442.8	6,966.2	64.1	65.7	-90.00	3,221.6	-915.9	617.4	489.6	127.82	4.830	
10,400.0	6,966.2	10,542.8	6,966.2	65.9	67.5	-90.00	3,321.6	-915.0	617.3	485.8	131.53	4.693	
10,500.0	6,966.2	10,642.8	6,966.2	67.8	69.3	-90.00	3,421.6	-914.1	617.2	482.0	135.25	4.564	
10,600.0	6,966.2	10,742.8	6,966.2	69.7	71.1	-90.00	3,521.6	-913.2	617.2	478.2	138.97	4.441	
10,700.0	6,966.2	10,842.8	6,966.2	71.5	73.0	-90.00	3,621.6	-912.3	617.1	474.4	142.70	4.324	
10,800.0	6,966.2	10,942.8	6,966.2	73.4	74.8	-90.00	3,721.6	-911.5	617.0	470.6	146.44	4.213	
10,900.0	6,966.2	11,042.8	6,966.2	75.3	76.6	-90.00	3,821.6	-910.6	616.9	466.8	150.18	4.108	
11,000.0	6,966.2	11,142.8	6,966.2	77.1	78.5	-90.00	3,921.6	-909.7	616.9	462.9	153.92	4.008	
11,100.0	6,966.2	11,242.8	6,966.2	79.0	80.3	-90.00	4,021.6	-908.8	616.8	459.1	157.67	3.912	
11,200.0	6,966.2	11,342.8	6,966.2	80.9	82.1	-90.00	4,121.6	-907.9	616.7	455.3	161.42	3.821	
11,300.0	6,966.2	11,442.8	6,966.2	82.7	84.0	-90.00	4,221.6	-907.1	616.6	451.5	165.18	3.733	
11,400.0	6,966.2	11,542.8	6,966.2	84.6	85.8	-90.00	4,321.6	-906.2	616.6	447.6	168.94	3.650	
11,500.0	6,966.2	11,642.8	6,966.2	86.5	87.7	-90.00	4,421.6	-905.3	616.5	443.8	172.70	3.570	
11,561.2	6,966.2	11,704.0	6,966.2	87.6	88.8	-90.00	4,482.8	-904.8	616.5	441.5	175.00	3.523	
11,576.7	6,966.2	11,718.1	6,966.2	87.9	89.1	-90.00	4,496.9	-904.6	616.4	440.9	175.56	3.511	

Company:	Great Western	Local Co-ordinate Reference:	Well Taoka KF 01-025HN
Project:	SEC.1-T1N-R65W	TVD Reference:	WELL @ 4976.2ft (RKB - 16.5')
Reference Site:	Taoka West Pad Sec.1-T1N-R65W	MD Reference:	WELL @ 4976.2ft (RKB - 16.5')
Site Error:	0.0ft	North Reference:	True
Reference Well:	Taoka KF 01-025HN	Survey Calculation Method:	Minimum Curvature
Well Error:	0.0ft	Output errors are at	2.00 sigma
Reference Wellbore	Wellbore #1	Database:	Landmark
Reference Design:	Plan #1 (11-15-13)	Offset TVD Reference:	Offset Datum

Offset Design Taoka West Pad Sec.1-T1N-R65W - Taoka KF 01-023HC - Wellbore #1 - Plan #1 (11-15-13)													Offset Site Error:	0.0 ft
Survey Program: 0-MWD													Offset Well Error:	0.0 ft
Reference		Offset		Semi Major Axis			Distance							Warning
Measured Depth (ft)	Vertical Depth (ft)	Measured Depth (ft)	Vertical Depth (ft)	Reference (ft)	Offset (ft)	Highside Toolface (°)	Offset Wellbore Centre +N/-S (ft)	+E/-W (ft)	Between Centres (ft)	Between Ellipses (ft)	Minimum Separation (ft)	Separation Factor		
0.0	0.0	0.0	0.0	0.0	0.0	-89.98	0.0	-30.2	30.2					
100.0	100.0	100.0	100.0	0.1	0.1	-89.98	0.0	-30.2	30.2	30.0	0.22	134.473		
200.0	200.0	200.0	200.0	0.3	0.3	-89.98	0.0	-30.2	30.2	29.6	0.67	44.824		
300.0	300.0	300.0	300.0	0.6	0.6	-89.98	0.0	-30.2	30.2	29.1	1.12	26.895		
400.0	400.0	400.0	400.0	0.8	0.8	-89.98	0.0	-30.2	30.2	28.7	1.57	19.210		
500.0	500.0	500.0	500.0	1.0	1.0	-89.98	0.0	-30.2	30.2	28.2	2.02	14.941		
600.0	600.0	600.0	600.0	1.2	1.2	-89.98	0.0	-30.2	30.2	27.8	2.47	12.225		
700.0	700.0	700.0	700.0	1.5	1.5	-89.98	0.0	-30.2	30.2	27.3	2.92	10.344		
800.0	800.0	800.0	800.0	1.7	1.7	-89.98	0.0	-30.2	30.2	26.9	3.37	8.965		
900.0	900.0	900.0	900.0	1.9	1.9	-89.98	0.0	-30.2	30.2	26.4	3.82	7.910		
1,000.0	1,000.0	1,000.0	1,000.0	2.1	2.1	-89.98	0.0	-30.2	30.2	26.0	4.27	7.078		
1,100.0	1,100.0	1,100.0	1,100.0	2.4	2.4	-89.98	0.0	-30.2	30.2	25.5	4.72	6.403		
1,200.0	1,200.0	1,200.0	1,200.0	2.6	2.6	-89.98	0.0	-30.2	30.2	25.1	5.17	5.847		
1,300.0	1,300.0	1,300.0	1,300.0	2.8	2.8	-89.98	0.0	-30.2	30.2	24.6	5.62	5.379		
1,400.0	1,400.0	1,400.0	1,400.0	3.0	3.0	-89.98	0.0	-30.2	30.2	24.2	6.07	4.980		
1,500.0	1,500.0	1,500.0	1,500.0	3.3	3.3	-89.98	0.0	-30.2	30.2	23.7	6.52	4.637		
1,600.0	1,600.0	1,600.0	1,600.0	3.5	3.5	-89.98	0.0	-30.2	30.2	23.3	6.97	4.338		
1,700.0	1,700.0	1,700.0	1,700.0	3.7	3.7	-89.98	0.0	-30.2	30.2	22.8	7.42	4.075		
1,800.0	1,800.0	1,800.0	1,800.0	3.9	3.9	-89.98	0.0	-30.2	30.2	22.4	7.87	3.842		
1,900.0	1,900.0	1,900.0	1,900.0	4.2	4.2	-89.98	0.0	-30.2	30.2	21.9	8.32	3.634		
2,000.0	2,000.0	2,000.0	2,000.0	4.4	4.4	-89.98	0.0	-30.2	30.2	21.5	8.77	3.448		
2,100.0	2,100.0	2,100.0	2,100.0	4.6	4.6	-89.98	0.0	-30.2	30.2	21.0	9.22	3.280		
2,200.0	2,200.0	2,200.0	2,200.0	4.8	4.8	-89.98	0.0	-30.2	30.2	20.6	9.66	3.127		
2,300.0	2,300.0	2,300.0	2,300.0	5.1	5.1	-89.98	0.0	-30.2	30.2	20.1	10.11	2.988		
2,400.0	2,400.0	2,400.0	2,400.0	5.3	5.3	-89.98	0.0	-30.2	30.2	19.7	10.56	2.861		
2,500.0	2,500.0	2,500.0	2,500.0	5.5	5.5	-89.98	0.0	-30.2	30.2	19.2	11.01	2.744		
2,600.0	2,600.0	2,600.0	2,600.0	5.7	5.7	-89.98	0.0	-30.2	30.2	18.8	11.46	2.637		
2,700.0	2,700.0	2,700.0	2,700.0	6.0	6.0	-89.98	0.0	-30.2	30.2	18.3	11.91	2.537		
2,800.0	2,800.0	2,800.0	2,800.0	6.2	6.2	-89.98	0.0	-30.2	30.2	17.9	12.36	2.445		
2,900.0	2,900.0	2,900.0	2,900.0	6.4	6.4	-89.98	0.0	-30.2	30.2	17.4	12.81	2.359		
3,000.0	3,000.0	3,000.0	3,000.0	6.6	6.6	-89.98	0.0	-30.2	30.2	17.0	13.26	2.279		
3,100.0	3,100.0	3,100.0	3,100.0	6.9	6.9	-89.98	0.0	-30.2	30.2	16.5	13.71	2.204		
3,200.0	3,200.0	3,200.0	3,200.0	7.1	7.1	-89.98	0.0	-30.2	30.2	16.1	14.16	2.134		
3,300.0	3,300.0	3,300.0	3,300.0	7.3	7.3	-89.98	0.0	-30.2	30.2	15.6	14.61	2.069		
3,400.0	3,400.0	3,400.0	3,400.0	7.5	7.5	-89.98	0.0	-30.2	30.2	15.2	15.06	2.007		
3,500.0	3,500.0	3,500.0	3,500.0	7.8	7.8	-89.98	0.0	-30.2	30.2	14.7	15.51	1.949		
3,600.0	3,600.0	3,600.0	3,600.0	8.0	8.0	-89.98	0.0	-30.2	30.2	14.3	15.96	1.894		
3,700.0	3,700.0	3,700.0	3,700.0	8.2	8.2	-89.98	0.0	-30.2	30.2	13.8	16.41	1.842		
3,800.0	3,800.0	3,800.0	3,800.0	8.4	8.4	-89.98	0.0	-30.2	30.2	13.4	16.86	1.793		
3,900.0	3,900.0	3,900.0	3,900.0	8.7	8.7	-89.98	0.0	-30.2	30.2	12.9	17.31	1.746		
4,000.0	4,000.0	4,000.0	4,000.0	8.9	8.9	-89.98	0.0	-30.2	30.2	12.5	17.76	1.702		
4,100.0	4,100.0	4,100.0	4,100.0	9.1	9.1	-89.98	0.0	-30.2	30.2	12.0	18.21	1.660		
4,200.0	4,200.0	4,200.0	4,200.0	9.3	9.3	-89.98	0.0	-30.2	30.2	11.6	18.66	1.620		
4,300.0	4,300.0	4,300.0	4,300.0	9.6	9.6	-89.98	0.0	-30.2	30.2	11.1	19.11	1.582		
4,400.0	4,400.0	4,400.0	4,400.0	9.8	9.8	-89.98	0.0	-30.2	30.2	10.7	19.55	1.546		
4,500.0	4,500.0	4,500.0	4,500.0	10.0	10.0	-89.98	0.0	-30.2	30.2	10.2	20.00	1.511		
4,600.0	4,600.0	4,600.0	4,600.0	10.2	10.2	-89.98	0.0	-30.2	30.2	9.8	20.45	1.478 Level 3		
4,700.0	4,700.0	4,700.0	4,700.0	10.5	10.5	-89.98	0.0	-30.2	30.2	9.3	20.90	1.446 Level 3		
4,800.0	4,800.0	4,800.0	4,800.0	10.7	10.7	-89.98	0.0	-30.2	30.2	8.9	21.35	1.416 Level 3		
4,900.0	4,900.0	4,900.0	4,900.0	10.9	10.9	-89.98	0.0	-30.2	30.2	8.4	21.80	1.386 Level 3		
5,000.0	5,000.0	5,000.0	5,000.0	11.1	11.1	-89.98	0.0	-30.2	30.2	8.0	22.25	1.358 Level 3		
5,100.0	5,100.0	5,100.0	5,100.0	11.4	11.4	-89.98	0.0	-30.2	30.2	7.5	22.70	1.331 Level 3		

CC - Min centre to center distance or convergent point, SF - min separation factor, ES - min ellipse separation

Company:	Great Western	Local Co-ordinate Reference:	Well Taoka KF 01-025HN
Project:	SEC.1-T1N-R65W	TVD Reference:	WELL @ 4976.2ft (RKB - 16.5')
Reference Site:	Taoka West Pad Sec.1-T1N-R65W	MD Reference:	WELL @ 4976.2ft (RKB - 16.5')
Site Error:	0.0ft	North Reference:	True
Reference Well:	Taoka KF 01-025HN	Survey Calculation Method:	Minimum Curvature
Well Error:	0.0ft	Output errors are at	2.00 sigma
Reference Wellbore	Wellbore #1	Database:	Landmark
Reference Design:	Plan #1 (11-15-13)	Offset TVD Reference:	Offset Datum

Offset Design Taoka West Pad Sec.1-T1N-R65W - Taoka KF 01-023HC - Wellbore #1 - Plan #1 (11-15-13)													Offset Site Error:	0.0ft
Survey Program: 0-MWD													Offset Well Error:	0.0ft
Reference		Offset		Semi Major Axis			Distance							Warning
Measured Depth (ft)	Vertical Depth (ft)	Measured Depth (ft)	Vertical Depth (ft)	Reference (ft)	Offset (ft)	Highside Toolface (°)	Offset Wellbore Centre +N/-S (ft)	+E/-W (ft)	Between Centres (ft)	Between Ellipses (ft)	Minimum Separation (ft)	Separation Factor		
5,200.0	5,200.0	5,200.0	5,200.0	11.6	11.6	-89.98	0.0	-30.2	30.2	7.1	23.15	1.306	Level 3	
5,300.0	5,300.0	5,300.0	5,300.0	11.8	11.8	-89.98	0.0	-30.2	30.2	6.6	23.60	1.281	Level 3	
5,400.0	5,400.0	5,400.0	5,400.0	12.0	12.0	-89.98	0.0	-30.2	30.2	6.2	24.05	1.257	Level 3	
5,500.0	5,500.0	5,500.0	5,500.0	12.2	12.2	-89.98	0.0	-30.2	30.2	5.7	24.50	1.234	Level 2, CC, ES, SF	
5,600.0	5,600.0	5,598.6	5,598.5	12.5	12.5	-92.25	-1.3	-32.4	32.5	7.6	24.92	1.303	Level 3	
5,700.0	5,700.0	5,696.6	5,696.3	12.7	12.6	-97.48	-5.1	-38.9	39.5	14.1	25.33	1.558		
5,800.0	5,799.9	5,793.9	5,792.8	12.9	12.8	43.30	-11.4	-49.7	49.6	24.0	25.66	1.933		
5,900.0	5,899.1	5,891.0	5,888.3	13.1	13.0	45.62	-20.2	-64.6	57.5	31.6	25.88	2.220		
6,000.0	5,996.4	5,987.8	5,982.5	13.3	13.2	52.36	-31.4	-83.6	63.2	37.1	26.09	2.424		
6,100.0	6,090.8	6,084.1	6,075.0	13.5	13.5	62.66	-44.9	-106.6	68.7	42.2	26.48	2.595		
6,200.0	6,181.3	6,179.8	6,165.5	13.7	13.7	75.37	-60.6	-133.4	76.5	49.3	27.16	2.816		
6,300.0	6,268.1	6,275.2	6,254.1	14.0	14.0	87.64	-78.6	-164.0	89.3	61.4	27.97	3.194		
6,400.0	6,354.7	6,371.3	6,341.4	14.4	14.4	94.55	-99.0	-198.6	106.8	78.1	28.73	3.718		
6,500.0	6,443.4	6,468.4	6,427.4	14.9	14.9	82.14	-121.8	-237.4	122.0	92.4	29.60	4.122		
6,600.0	6,537.2	6,565.1	6,510.9	15.2	15.4	41.35	-146.5	-279.5	124.4	94.6	29.78	4.177		
6,700.0	6,631.6	6,657.5	6,590.1	15.6	15.9	-10.84	-170.6	-320.4	120.7	91.5	29.19	4.134		
6,714.8	6,645.3	6,670.4	6,601.2	15.6	16.0	-17.81	-173.9	-326.2	120.5	91.4	29.10	4.141		
6,800.0	6,721.7	6,739.7	6,660.7	15.8	16.5	-51.77	-192.0	-356.9	127.9	98.8	29.15	4.389		
6,900.0	6,802.8	6,809.6	6,720.6	15.9	16.9	-77.42	-210.1	-387.9	163.5	133.8	29.75	5.496		
7,000.0	6,870.9	6,892.6	6,793.5	16.0	17.4	-94.60	-222.1	-425.5	222.6	192.7	29.97	7.428		
7,100.0	6,922.4	7,003.0	6,891.2	16.2	18.0	-106.96	-214.0	-475.6	291.3	261.8	29.44	9.894		
7,200.0	6,954.7	7,192.2	7,044.3	16.5	18.8	-119.23	-138.6	-553.7	358.1	330.4	27.78	12.893		
7,300.0	6,966.2	7,605.4	7,207.2	17.0	20.1	-127.71	215.8	-634.5	394.1	367.3	26.75	14.732		
7,400.0	6,966.2	7,708.7	7,207.2	17.5	20.5	-127.71	319.0	-633.6	394.0	366.3	27.72	14.213		
7,500.0	6,966.2	7,808.7	7,207.2	18.4	21.1	-127.72	419.0	-632.7	393.9	364.9	29.03	13.570		
7,600.0	6,966.2	7,908.7	7,207.2	19.3	21.9	-127.73	519.0	-631.8	393.9	363.3	30.61	12.868		
7,700.0	6,966.2	8,008.7	7,207.2	20.4	22.8	-127.73	619.0	-630.9	393.8	361.4	32.42	12.148		
7,800.0	6,966.2	8,108.7	7,207.2	21.6	23.9	-127.74	719.0	-630.0	393.8	359.3	34.42	11.439		
7,900.0	6,966.2	8,208.7	7,207.2	22.9	25.0	-127.74	819.0	-629.2	393.7	357.1	36.59	10.760		
8,000.0	6,966.2	8,308.7	7,207.2	24.3	26.3	-127.75	919.0	-628.3	393.6	354.7	38.89	10.121		
8,100.0	6,966.2	8,408.7	7,207.2	25.7	27.6	-127.76	1,019.0	-627.4	393.6	352.3	41.31	9.528		
8,200.0	6,966.2	8,508.7	7,207.2	27.2	29.0	-127.76	1,119.0	-626.5	393.5	349.7	43.82	8.981		
8,300.0	6,966.2	8,608.7	7,207.2	28.8	30.5	-127.77	1,219.0	-625.7	393.5	347.1	46.41	8.479		
8,400.0	6,966.2	8,708.7	7,207.2	30.4	32.0	-127.78	1,319.0	-624.8	393.4	344.4	49.06	8.019		
8,500.0	6,966.2	8,808.7	7,207.2	32.0	33.5	-127.78	1,419.0	-623.9	393.4	341.6	51.77	7.598		
8,600.0	6,966.2	8,908.7	7,207.2	33.7	35.1	-127.79	1,519.0	-623.0	393.3	338.8	54.53	7.213		
8,700.0	6,966.2	9,008.7	7,207.2	35.4	36.7	-127.80	1,619.0	-622.1	393.2	335.9	57.32	6.860		
8,800.0	6,966.2	9,108.7	7,207.2	37.1	38.4	-127.80	1,719.0	-621.3	393.2	333.0	60.16	6.536		
8,900.0	6,966.2	9,208.7	7,207.2	38.8	40.0	-127.81	1,819.0	-620.4	393.1	330.1	63.02	6.238		
9,000.0	6,966.2	9,308.7	7,207.2	40.5	41.7	-127.82	1,919.0	-619.5	393.1	327.2	65.91	5.964		
9,100.0	6,966.2	9,408.7	7,207.2	42.3	43.4	-127.82	2,019.0	-618.6	393.0	324.2	68.82	5.711		
9,200.0	6,966.2	9,508.7	7,207.2	44.1	45.2	-127.83	2,119.0	-617.7	393.0	321.2	71.75	5.477		
9,300.0	6,966.2	9,608.7	7,207.2	45.9	46.9	-127.84	2,219.0	-616.9	392.9	318.2	74.70	5.260		
9,400.0	6,966.2	9,708.7	7,207.2	47.6	48.7	-127.84	2,319.0	-616.0	392.8	315.2	77.66	5.058		
9,500.0	6,966.2	9,808.7	7,207.2	49.4	50.4	-127.85	2,419.0	-615.1	392.8	312.1	80.64	4.871		
9,600.0	6,966.2	9,908.7	7,207.2	51.3	52.2	-127.85	2,519.0	-614.2	392.7	309.1	83.63	4.696		
9,700.0	6,966.2	10,008.7	7,207.2	53.1	54.0	-127.86	2,619.0	-613.3	392.7	306.0	86.63	4.533		
9,800.0	6,966.2	10,108.7	7,207.2	54.9	55.8	-127.87	2,718.9	-612.5	392.6	303.0	89.64	4.380		
9,900.0	6,966.2	10,208.7	7,207.2	56.7	57.6	-127.87	2,818.9	-611.6	392.6	299.9	92.66	4.236		
10,000.0	6,966.2	10,308.7	7,207.2	58.6	59.4	-127.88	2,918.9	-610.7	392.5	296.8	95.69	4.102		
10,100.0	6,966.2	10,408.7	7,207.2	60.4	61.2	-127.89	3,018.9	-609.8	392.4	293.7	98.72	3.975		
10,200.0	6,966.2	10,508.7	7,207.2	62.2	63.0	-127.89	3,118.9	-608.9	392.4	290.6	101.76	3.856		

CC - Min centre to center distance or convergent point, SF - min separation factor, ES - min ellipse separation

Company:	Great Western	Local Co-ordinate Reference:	Well Taoka KF 01-025HN
Project:	SEC.1-T1N-R65W	TVD Reference:	WELL @ 4976.2ft (RKB - 16.5')
Reference Site:	Taoka West Pad Sec.1-T1N-R65W	MD Reference:	WELL @ 4976.2ft (RKB - 16.5')
Site Error:	0.0ft	North Reference:	True
Reference Well:	Taoka KF 01-025HN	Survey Calculation Method:	Minimum Curvature
Well Error:	0.0ft	Output errors are at	2.00 sigma
Reference Wellbore	Wellbore #1	Database:	Landmark
Reference Design:	Plan #1 (11-15-13)	Offset TVD Reference:	Offset Datum

Offset Design Taoka West Pad Sec.1-T1N-R65W - Taoka KF 01-023HC - Wellbore #1 - Plan #1 (11-15-13)												Offset Site Error:	0.0 ft
Survey Program: 0-MWD												Offset Well Error:	0.0 ft
Reference	Offset	Semi Major Axis		Distance									
Measured Depth (ft)	Vertical Depth (ft)	Measured Depth (ft)	Vertical Depth (ft)	Reference (ft)	Offset (ft)	Highside Toolface (°)	Offset Wellbore Centre +N/-S (ft)	+E/-W (ft)	Between Centres (ft)	Between Ellipses (ft)	Minimum Separation (ft)	Separation Factor	Warning
10,300.0	6,966.2	10,608.7	7,207.2	64.1	64.8	-127.90	3,218.9	-608.1	392.3	287.5	104.81	3.743	
10,400.0	6,966.2	10,708.7	7,207.2	65.9	66.7	-127.91	3,318.9	-607.2	392.3	284.4	107.86	3.637	
10,500.0	6,966.2	10,808.7	7,207.2	67.8	68.5	-127.91	3,418.9	-606.3	392.2	281.3	110.92	3.536	
10,600.0	6,966.2	10,908.7	7,207.2	69.7	70.3	-127.92	3,518.9	-605.4	392.1	278.2	113.98	3.441	
10,700.0	6,966.2	11,008.7	7,207.2	71.5	72.2	-127.93	3,618.9	-604.5	392.1	275.0	117.05	3.350	
10,800.0	6,966.2	11,108.7	7,207.2	73.4	74.0	-127.93	3,718.9	-603.7	392.0	271.9	120.11	3.264	
10,900.0	6,966.2	11,208.7	7,207.2	75.3	75.9	-127.94	3,818.9	-602.8	392.0	268.8	123.19	3.182	
11,000.0	6,966.2	11,308.7	7,207.2	77.1	77.7	-127.95	3,918.9	-601.9	391.9	265.7	126.26	3.104	
11,100.0	6,966.2	11,408.7	7,207.2	79.0	79.6	-127.95	4,018.9	-601.0	391.9	262.5	129.34	3.030	
11,200.0	6,966.2	11,508.7	7,207.2	80.9	81.4	-127.96	4,118.9	-600.1	391.8	259.4	132.42	2.959	
11,300.0	6,966.2	11,608.7	7,207.2	82.7	83.3	-127.97	4,218.9	-599.3	391.7	256.2	135.50	2.891	
11,400.0	6,966.2	11,708.7	7,207.2	84.6	85.2	-127.97	4,318.9	-598.4	391.7	253.1	138.59	2.826	
11,500.0	6,966.2	11,808.7	7,207.2	86.5	87.0	-127.98	4,418.9	-597.5	391.6	250.0	141.68	2.764	
11,564.1	6,966.2	11,872.8	7,207.2	87.7	88.2	-127.98	4,483.0	-596.9	391.6	247.9	143.66	2.726	
11,576.7	6,966.2	11,884.9	7,207.2	87.9	88.5	-127.98	4,495.1	-596.8	391.6	247.6	144.04	2.719	

Company:	Great Western	Local Co-ordinate Reference:	Well Taoka KF 01-025HN
Project:	SEC.1-T1N-R65W	TVD Reference:	WELL @ 4976.2ft (RKB - 16.5')
Reference Site:	Taoka West Pad Sec.1-T1N-R65W	MD Reference:	WELL @ 4976.2ft (RKB - 16.5')
Site Error:	0.0ft	North Reference:	True
Reference Well:	Taoka KF 01-025HN	Survey Calculation Method:	Minimum Curvature
Well Error:	0.0ft	Output errors are at	2.00 sigma
Reference Wellbore	Wellbore #1	Database:	Landmark
Reference Design:	Plan #1 (11-15-13)	Offset TVD Reference:	Offset Datum

Offset Design Taoka West Pad Sec.1-T1N-R65W - Taoka KF 01-027HN - Wellbore #1 - Plan #1 (11-15-13)												Offset Site Error:	0.0 ft
Survey Program: 0-MWD												Offset Well Error:	0.0 ft
Reference		Offset		Semi Major Axis			Distance						Warning
Measured Depth (ft)	Vertical Depth (ft)	Measured Depth (ft)	Vertical Depth (ft)	Reference (ft)	Offset (ft)	Highside Toolface (°)	Offset Wellbore Centre +N/-S (ft)	+E/-W (ft)	Between Centres (ft)	Between Ellipses (ft)	Minimum Separation (ft)	Separation Factor	
0.0	0.0	0.0	0.0	0.0	0.0	89.92	0.0	29.7	29.7				
100.0	100.0	100.0	100.0	0.1	0.1	89.92	0.0	29.7	29.7	29.4	0.22	131.983	
200.0	200.0	200.0	200.0	0.3	0.3	89.92	0.0	29.7	29.7	29.0	0.67	43.994	
300.0	300.0	300.0	300.0	0.6	0.6	89.92	0.0	29.7	29.7	28.5	1.12	26.397	
400.0	400.0	400.0	400.0	0.8	0.8	89.92	0.0	29.7	29.7	28.1	1.57	18.855	
500.0	500.0	500.0	500.0	1.0	1.0	89.92	0.0	29.7	29.7	27.6	2.02	14.665	
600.0	600.0	600.0	600.0	1.2	1.2	89.92	0.0	29.7	29.7	27.2	2.47	11.998	
700.0	700.0	700.0	700.0	1.5	1.5	89.92	0.0	29.7	29.7	26.7	2.92	10.153	
800.0	800.0	800.0	800.0	1.7	1.7	89.92	0.0	29.7	29.7	26.3	3.37	8.799	
900.0	900.0	900.0	900.0	1.9	1.9	89.92	0.0	29.7	29.7	25.8	3.82	7.764	
1,000.0	1,000.0	1,000.0	1,000.0	2.1	2.1	89.92	0.0	29.7	29.7	25.4	4.27	6.946	
1,100.0	1,100.0	1,100.0	1,100.0	2.4	2.4	89.92	0.0	29.7	29.7	24.9	4.72	6.285	
1,200.0	1,200.0	1,200.0	1,200.0	2.6	2.6	89.92	0.0	29.7	29.7	24.5	5.17	5.738	
1,300.0	1,300.0	1,300.0	1,300.0	2.8	2.8	89.92	0.0	29.7	29.7	24.0	5.62	5.279	
1,400.0	1,400.0	1,400.0	1,400.0	3.0	3.0	89.92	0.0	29.7	29.7	23.6	6.07	4.888	
1,500.0	1,500.0	1,500.0	1,500.0	3.3	3.3	89.92	0.0	29.7	29.7	23.1	6.52	4.551	
1,600.0	1,600.0	1,600.0	1,600.0	3.5	3.5	89.92	0.0	29.7	29.7	22.7	6.97	4.258	
1,700.0	1,700.0	1,700.0	1,700.0	3.7	3.7	89.92	0.0	29.7	29.7	22.2	7.42	3.999	
1,800.0	1,800.0	1,800.0	1,800.0	3.9	3.9	89.92	0.0	29.7	29.7	21.8	7.87	3.771	
1,900.0	1,900.0	1,900.0	1,900.0	4.2	4.2	89.92	0.0	29.7	29.7	21.3	8.32	3.567	
2,000.0	2,000.0	2,000.0	2,000.0	4.4	4.4	89.92	0.0	29.7	29.7	20.9	8.77	3.384	
2,100.0	2,100.0	2,100.0	2,100.0	4.6	4.6	89.92	0.0	29.7	29.7	20.4	9.22	3.219	
2,200.0	2,200.0	2,200.0	2,200.0	4.8	4.8	89.92	0.0	29.7	29.7	20.0	9.66	3.069	
2,300.0	2,300.0	2,300.0	2,300.0	5.1	5.1	89.92	0.0	29.7	29.7	19.6	10.11	2.933	
2,400.0	2,400.0	2,400.0	2,400.0	5.3	5.3	89.92	0.0	29.7	29.7	19.1	10.56	2.808	
2,500.0	2,500.0	2,500.0	2,500.0	5.5	5.5	89.92	0.0	29.7	29.7	18.7	11.01	2.694	
2,600.0	2,600.0	2,600.0	2,600.0	5.7	5.7	89.92	0.0	29.7	29.7	18.2	11.46	2.588	
2,700.0	2,700.0	2,700.0	2,700.0	6.0	6.0	89.92	0.0	29.7	29.7	17.8	11.91	2.490	
2,800.0	2,800.0	2,800.0	2,800.0	6.2	6.2	89.92	0.0	29.7	29.7	17.3	12.36	2.400	
2,900.0	2,900.0	2,900.0	2,900.0	6.4	6.4	89.92	0.0	29.7	29.7	16.9	12.81	2.315	
3,000.0	3,000.0	3,000.0	3,000.0	6.6	6.6	89.92	0.0	29.7	29.7	16.4	13.26	2.237	
3,100.0	3,100.0	3,100.0	3,100.0	6.9	6.9	89.92	0.0	29.7	29.7	16.0	13.71	2.164	
3,200.0	3,200.0	3,200.0	3,200.0	7.1	7.1	89.92	0.0	29.7	29.7	15.5	14.16	2.095	
3,300.0	3,300.0	3,300.0	3,300.0	7.3	7.3	89.92	0.0	29.7	29.7	15.1	14.61	2.031	
3,400.0	3,400.0	3,400.0	3,400.0	7.5	7.5	89.92	0.0	29.7	29.7	14.6	15.06	1.970	
3,500.0	3,500.0	3,500.0	3,500.0	7.8	7.8	89.92	0.0	29.7	29.7	14.2	15.51	1.913	
3,600.0	3,600.0	3,600.0	3,600.0	8.0	8.0	89.92	0.0	29.7	29.7	13.7	15.96	1.859	
3,700.0	3,700.0	3,700.0	3,700.0	8.2	8.2	89.92	0.0	29.7	29.7	13.3	16.41	1.808	
3,800.0	3,800.0	3,800.0	3,800.0	8.4	8.4	89.92	0.0	29.7	29.7	12.8	16.86	1.760	
3,900.0	3,900.0	3,900.0	3,900.0	8.7	8.7	89.92	0.0	29.7	29.7	12.4	17.31	1.714	
4,000.0	4,000.0	4,000.0	4,000.0	8.9	8.9	89.92	0.0	29.7	29.7	11.9	17.76	1.671	
4,100.0	4,100.0	4,100.0	4,100.0	9.1	9.1	89.92	0.0	29.7	29.7	11.5	18.21	1.629	
4,200.0	4,200.0	4,200.0	4,200.0	9.3	9.3	89.92	0.0	29.7	29.7	11.0	18.66	1.590	
4,300.0	4,300.0	4,300.0	4,300.0	9.6	9.6	89.92	0.0	29.7	29.7	10.6	19.11	1.553	
4,400.0	4,400.0	4,400.0	4,400.0	9.8	9.8	89.92	0.0	29.7	29.7	10.1	19.55	1.517	
4,500.0	4,500.0	4,500.0	4,500.0	10.0	10.0	89.92	0.0	29.7	29.7	9.7	20.00	1.483 Level 3	
4,600.0	4,600.0	4,600.0	4,600.0	10.2	10.2	89.92	0.0	29.7	29.7	9.2	20.45	1.450 Level 3	
4,700.0	4,700.0	4,700.0	4,700.0	10.5	10.5	89.92	0.0	29.7	29.7	8.8	20.90	1.419 Level 3	
4,800.0	4,800.0	4,800.0	4,800.0	10.7	10.7	89.92	0.0	29.7	29.7	8.3	21.35	1.389 Level 3	
4,900.0	4,900.0	4,900.0	4,900.0	10.9	10.9	89.92	0.0	29.7	29.7	7.9	21.80	1.361 Level 3	
5,000.0	5,000.0	5,000.0	5,000.0	11.1	11.1	89.92	0.0	29.7	29.7	7.4	22.25	1.333 Level 3	
5,100.0	5,100.0	5,100.0	5,100.0	11.4	11.4	89.92	0.0	29.7	29.7	7.0	22.70	1.307 Level 3	

CC - Min centre to center distance or convergent point, SF - min separation factor, ES - min ellipse separation

Company:	Great Western	Local Co-ordinate Reference:	Well Taoka KF 01-025HN
Project:	SEC.1-T1N-R65W	TVD Reference:	WELL @ 4976.2ft (RKB - 16.5')
Reference Site:	Taoka West Pad Sec.1-T1N-R65W	MD Reference:	WELL @ 4976.2ft (RKB - 16.5')
Site Error:	0.0ft	North Reference:	True
Reference Well:	Taoka KF 01-025HN	Survey Calculation Method:	Minimum Curvature
Well Error:	0.0ft	Output errors are at	2.00 sigma
Reference Wellbore	Wellbore #1	Database:	Landmark
Reference Design:	Plan #1 (11-15-13)	Offset TVD Reference:	Offset Datum

Offset Design Taoka West Pad Sec.1-T1N-R65W - Taoka KF 01-027HN - Wellbore #1 - Plan #1 (11-15-13)													Offset Site Error:	0.0 ft
Survey Program: 0-MWD													Offset Well Error:	0.0 ft
Reference		Offset		Semi Major Axis			Distance							Warning
Measured Depth (ft)	Vertical Depth (ft)	Measured Depth (ft)	Vertical Depth (ft)	Reference (ft)	Offset (ft)	Highside Toolface (°)	Offset Wellbore Centre +N/-S (ft)	+E/-W (ft)	Between Centres (ft)	Between Ellipses (ft)	Minimum Separation (ft)	Separation Factor		
5,200.0	5,200.0	5,200.0	5,200.0	11.6	11.6	89.92	0.0	29.7	29.7	6.5	23.15	1.281 Level 3		
5,300.0	5,300.0	5,300.0	5,300.0	11.8	11.8	89.92	0.0	29.7	29.7	6.1	23.60	1.257 Level 3		
5,400.0	5,400.0	5,400.0	5,400.0	12.0	12.0	89.92	0.0	29.7	29.7	5.6	24.05	1.233 Level 2		
5,500.0	5,500.0	5,500.0	5,500.0	12.2	12.2	89.92	0.0	29.7	29.7	5.2	24.50	1.211 Level 2		
5,600.0	5,600.0	5,600.0	5,600.0	12.5	12.5	89.92	0.0	29.7	29.7	4.7	24.95	1.189 Level 2, CC, ES, SF		
5,700.0	5,700.0	5,699.2	5,699.2	12.7	12.7	92.93	-1.6	30.5	30.6	5.2	25.38	1.205 Level 2		
5,800.0	5,799.9	5,797.6	5,797.2	12.9	12.8	-114.35	-8.9	34.5	36.7	11.0	25.72	1.427 Level 3		
5,900.0	5,899.1	5,894.6	5,893.0	13.1	13.0	-113.14	-21.9	41.5	51.5	25.5	26.02	1.980		
6,000.0	5,996.4	5,989.2	5,985.3	13.3	13.2	-115.14	-40.0	51.3	74.7	48.4	26.26	2.843		
6,100.0	6,090.8	6,080.7	6,073.1	13.5	13.4	-117.39	-62.6	63.5	106.1	79.7	26.45	4.012		
6,200.0	6,181.3	6,168.2	6,155.5	13.7	13.6	-118.95	-88.9	77.7	145.7	119.0	26.62	5.472		
6,300.0	6,268.1	6,252.2	6,232.5	14.0	13.8	-120.98	-118.1	93.5	191.7	164.8	26.94	7.116		
6,400.0	6,354.7	6,334.1	6,305.7	14.4	14.1	-121.63	-150.4	110.9	240.5	213.0	27.46	8.756		
6,500.0	6,443.4	6,414.3	6,375.8	14.9	14.4	-139.97	-184.7	129.8	291.8	264.0	27.81	10.493		
6,600.0	6,537.2	6,492.8	6,447.6	15.2	14.7	-177.79	-209.0	149.7	346.0	317.7	28.24	12.253		
6,700.0	6,631.6	6,572.4	6,523.5	15.6	15.0	141.75	-219.7	170.9	401.1	372.3	28.80	13.926		
6,800.0	6,721.7	6,656.1	6,603.8	15.8	15.3	117.18	-215.5	193.4	455.1	425.7	29.40	15.479		
6,900.0	6,802.8	6,747.5	6,689.0	15.9	15.4	103.77	-193.1	217.3	505.7	475.8	29.89	16.921		
7,000.0	6,870.9	6,851.3	6,777.8	16.0	15.6	96.21	-146.2	242.5	550.6	520.4	30.20	18.231		
7,100.0	6,922.4	6,972.5	6,864.7	16.2	15.7	92.14	-66.0	267.4	586.8	556.4	30.45	19.271		
7,200.0	6,954.7	7,113.9	6,935.1	16.5	15.8	90.35	54.2	287.9	611.2	580.2	30.95	19.747		
7,300.0	6,966.2	7,271.1	6,966.0	17.0	16.4	89.99	207.1	297.6	620.4	588.3	32.06	19.354		
7,400.0	6,966.2	7,376.0	6,966.2	17.5	17.1	90.00	312.0	298.4	620.3	587.0	33.35	18.601		
7,500.0	6,966.2	7,476.0	6,966.2	18.4	17.9	90.00	412.0	299.1	620.2	585.2	34.99	17.724		
7,600.0	6,966.2	7,576.0	6,966.2	19.3	18.8	90.00	512.0	299.8	620.1	583.1	36.96	16.777		
7,700.0	6,966.2	7,676.0	6,966.2	20.4	19.9	90.00	612.0	300.5	620.0	580.8	39.20	15.814		
7,800.0	6,966.2	7,776.0	6,966.2	21.6	21.2	90.00	712.0	301.2	619.9	578.2	41.68	14.872		
7,900.0	6,966.2	7,876.0	6,966.2	22.9	22.5	90.00	812.0	301.9	619.8	575.4	44.35	13.975		
8,000.0	6,966.2	7,976.0	6,966.2	24.3	23.9	90.00	912.0	302.6	619.6	572.5	47.18	13.135		
8,100.0	6,966.2	8,076.0	6,966.2	25.7	25.3	90.00	1,012.0	303.3	619.5	569.4	50.14	12.357		
8,200.0	6,966.2	8,176.0	6,966.2	27.2	26.8	90.00	1,112.0	304.0	619.4	566.2	53.21	11.641		
8,300.0	6,966.2	8,276.0	6,966.2	28.8	28.4	90.00	1,212.0	304.7	619.3	562.9	56.37	10.986		
8,400.0	6,966.2	8,376.0	6,966.2	30.4	30.0	90.00	1,312.0	305.3	619.2	559.6	59.62	10.386		
8,500.0	6,966.2	8,476.0	6,966.2	32.0	31.7	90.00	1,412.0	306.0	619.1	556.2	62.93	9.838		
8,600.0	6,966.2	8,576.0	6,966.2	33.7	33.3	90.00	1,512.0	306.7	619.0	552.7	66.29	9.337		
8,700.0	6,966.2	8,676.0	6,966.2	35.4	35.0	90.00	1,612.0	307.4	618.9	549.2	69.70	8.878		
8,800.0	6,966.2	8,776.0	6,966.2	37.1	36.7	90.00	1,712.0	308.1	618.7	545.6	73.16	8.458		
8,900.0	6,966.2	8,876.0	6,966.2	38.8	38.5	90.00	1,812.0	308.8	618.6	542.0	76.65	8.071		
9,000.0	6,966.2	8,976.0	6,966.2	40.5	40.2	90.00	1,912.0	309.5	618.5	538.4	80.17	7.716		
9,100.0	6,966.2	9,076.0	6,966.2	42.3	42.0	90.00	2,012.0	310.2	618.4	534.7	83.71	7.387		
9,200.0	6,966.2	9,176.0	6,966.2	44.1	43.8	90.00	2,112.0	310.9	618.3	531.0	87.28	7.084		
9,300.0	6,966.2	9,276.0	6,966.2	45.9	45.6	90.00	2,211.9	311.6	618.2	527.3	90.88	6.803		
9,400.0	6,966.2	9,376.0	6,966.2	47.6	47.4	90.00	2,311.9	312.3	618.1	523.6	94.49	6.541		
9,500.0	6,966.2	9,476.0	6,966.2	49.4	49.2	90.00	2,411.9	313.0	618.0	519.8	98.11	6.298		
9,600.0	6,966.2	9,576.0	6,966.2	51.3	51.0	90.00	2,511.9	313.7	617.8	516.1	101.75	6.072		
9,700.0	6,966.2	9,676.0	6,966.2	53.1	52.8	90.00	2,611.9	314.4	617.7	512.3	105.41	5.860		
9,800.0	6,966.2	9,776.0	6,966.2	54.9	54.6	90.00	2,711.9	315.1	617.6	508.5	109.08	5.662		
9,900.0	6,966.2	9,876.0	6,966.2	56.7	56.5	90.00	2,811.9	315.8	617.5	504.7	112.75	5.477		
10,000.0	6,966.2	9,976.0	6,966.2	58.6	58.3	90.00	2,911.9	316.5	617.4	500.9	116.44	5.302		
10,100.0	6,966.2	10,076.0	6,966.2	60.4	60.1	90.00	3,011.9	317.1	617.3	497.1	120.14	5.138		
10,200.0	6,966.2	10,176.0	6,966.2	62.2	62.0	90.00	3,111.9	317.8	617.2	493.3	123.84	4.984		
10,300.0	6,966.2	10,276.0	6,966.2	64.1	63.8	90.00	3,211.9	318.5	617.1	489.5	127.55	4.838		

CC - Min centre to center distance or convergent point, SF - min separation factor, ES - min ellipse separation

Company:	Great Western	Local Co-ordinate Reference:	Well Taoka KF 01-025HN
Project:	SEC.1-T1N-R65W	TVD Reference:	WELL @ 4976.2ft (RKB - 16.5')
Reference Site:	Taoka West Pad Sec.1-T1N-R65W	MD Reference:	WELL @ 4976.2ft (RKB - 16.5')
Site Error:	0.0ft	North Reference:	True
Reference Well:	Taoka KF 01-025HN	Survey Calculation Method:	Minimum Curvature
Well Error:	0.0ft	Output errors are at	2.00 sigma
Reference Wellbore	Wellbore #1	Database:	Landmark
Reference Design:	Plan #1 (11-15-13)	Offset TVD Reference:	Offset Datum

Offset Design Taoka West Pad Sec.1-T1N-R65W - Taoka KF 01-027HN - Wellbore #1 - Plan #1 (11-15-13)												Offset Site Error:	0.0 ft
Survey Program: 0-MWD												Offset Well Error:	0.0 ft
Reference		Offset		Semi Major Axis			Distance						
Measured Depth (ft)	Vertical Depth (ft)	Measured Depth (ft)	Vertical Depth (ft)	Reference (ft)	Offset (ft)	Highside Toolface (°)	Offset Wellbore Centre +N/-S (ft)	+E/-W (ft)	Between Centres (ft)	Between Ellipses (ft)	Minimum Separation (ft)	Separation Factor	Warning
10,400.0	6,966.2	10,376.0	6,966.2	65.9	65.7	90.00	3,311.9	319.2	616.9	485.7	131.27	4.700	
10,500.0	6,966.2	10,476.0	6,966.2	67.8	67.6	90.00	3,411.9	319.9	616.8	481.8	134.99	4.569	
10,600.0	6,966.2	10,576.0	6,966.2	69.7	69.4	90.00	3,511.9	320.6	616.7	478.0	138.72	4.446	
10,700.0	6,966.2	10,676.0	6,966.2	71.5	71.3	90.00	3,611.9	321.3	616.6	474.1	142.46	4.328	
10,800.0	6,966.2	10,776.0	6,966.2	73.4	73.1	90.00	3,711.9	322.0	616.5	470.3	146.20	4.217	
10,900.0	6,966.2	10,876.0	6,966.2	75.3	75.0	90.00	3,811.9	322.7	616.4	466.4	149.94	4.111	
11,000.0	6,966.2	10,976.0	6,966.2	77.1	76.9	90.00	3,911.9	323.4	616.3	462.6	153.69	4.010	
11,100.0	6,966.2	11,076.0	6,966.2	79.0	78.8	90.00	4,011.9	324.1	616.1	458.7	157.44	3.913	
11,200.0	6,966.2	11,176.0	6,966.2	80.9	80.6	90.00	4,111.9	324.8	616.0	454.8	161.20	3.822	
11,300.0	6,966.2	11,276.0	6,966.2	82.7	82.5	90.00	4,211.9	325.5	615.9	451.0	164.96	3.734	
11,400.0	6,966.2	11,376.0	6,966.2	84.6	84.4	90.00	4,311.9	326.2	615.8	447.1	168.72	3.650	
11,500.0	6,966.2	11,476.0	6,966.2	86.5	86.3	90.00	4,411.9	326.9	615.7	443.2	172.48	3.570	
11,576.5	6,966.2	11,551.9	6,966.2	87.9	87.7	90.00	4,487.8	327.4	615.6	440.3	175.35	3.511	
11,576.7	6,966.2	11,551.9	6,966.2	87.9	87.7	90.00	4,487.8	327.4	615.6	440.3	175.36	3.511	

Company:	Great Western	Local Co-ordinate Reference:	Well Taoka KF 01-025HN
Project:	SEC.1-T1N-R65W	TVD Reference:	WELL @ 4976.2ft (RKB - 16.5')
Reference Site:	Taoka West Pad Sec.1-T1N-R65W	MD Reference:	WELL @ 4976.2ft (RKB - 16.5')
Site Error:	0.0ft	North Reference:	True
Reference Well:	Taoka KF 01-025HN	Survey Calculation Method:	Minimum Curvature
Well Error:	0.0ft	Output errors are at	2.00 sigma
Reference Wellbore	Wellbore #1	Database:	Landmark
Reference Design:	Plan #1 (11-15-13)	Offset TVD Reference:	Offset Datum

Offset Design Taoka West Pad Sec.1-T1N-R65W - Taoka KF 01-028HC - Wellbore #1 - Plan #1 (11-18-13)													Offset Site Error:	0.0 ft
Survey Program: 0-MWD													Offset Well Error:	0.0 ft
Reference		Offset		Semi Major Axis			Distance							Warning
Measured Depth (ft)	Vertical Depth (ft)	Measured Depth (ft)	Vertical Depth (ft)	Reference (ft)	Offset (ft)	Highside Toolface (°)	Offset Wellbore Centre +N/-S (ft)	+E/-W (ft)	Between Centres (ft)	Between Ellipses (ft)	Minimum Separation (ft)	Separation Factor		
0.0	0.0	0.0	0.0	0.0	0.0	89.97	0.0	59.9	59.9					
100.0	100.0	100.0	100.0	0.1	0.1	89.97	0.0	59.9	59.9	59.7	0.22	266.456		
200.0	200.0	200.0	200.0	0.3	0.3	89.97	0.0	59.9	59.9	59.2	0.67	88.819		
300.0	300.0	300.0	300.0	0.6	0.6	89.97	0.0	59.9	59.9	58.8	1.12	53.291		
400.0	400.0	400.0	400.0	0.8	0.8	89.97	0.0	59.9	59.9	58.3	1.57	38.065		
500.0	500.0	500.0	500.0	1.0	1.0	89.97	0.0	59.9	59.9	57.9	2.02	29.606		
600.0	600.0	600.0	600.0	1.2	1.2	89.97	0.0	59.9	59.9	57.4	2.47	24.223		
700.0	700.0	700.0	700.0	1.5	1.5	89.97	0.0	59.9	59.9	57.0	2.92	20.497		
800.0	800.0	800.0	800.0	1.7	1.7	89.97	0.0	59.9	59.9	56.5	3.37	17.764		
900.0	900.0	900.0	900.0	1.9	1.9	89.97	0.0	59.9	59.9	56.1	3.82	15.674		
1,000.0	1,000.0	1,000.0	1,000.0	2.1	2.1	89.97	0.0	59.9	59.9	55.6	4.27	14.024		
1,100.0	1,100.0	1,100.0	1,100.0	2.4	2.4	89.97	0.0	59.9	59.9	55.2	4.72	12.688		
1,200.0	1,200.0	1,200.0	1,200.0	2.6	2.6	89.97	0.0	59.9	59.9	54.7	5.17	11.585		
1,300.0	1,300.0	1,300.0	1,300.0	2.8	2.8	89.97	0.0	59.9	59.9	54.3	5.62	10.658		
1,400.0	1,400.0	1,400.0	1,400.0	3.0	3.0	89.97	0.0	59.9	59.9	53.8	6.07	9.869		
1,500.0	1,500.0	1,500.0	1,500.0	3.3	3.3	89.97	0.0	59.9	59.9	53.4	6.52	9.188		
1,600.0	1,600.0	1,600.0	1,600.0	3.5	3.5	89.97	0.0	59.9	59.9	52.9	6.97	8.595		
1,700.0	1,700.0	1,700.0	1,700.0	3.7	3.7	89.97	0.0	59.9	59.9	52.5	7.42	8.074		
1,800.0	1,800.0	1,800.0	1,800.0	3.9	3.9	89.97	0.0	59.9	59.9	52.0	7.87	7.613		
1,900.0	1,900.0	1,900.0	1,900.0	4.2	4.2	89.97	0.0	59.9	59.9	51.6	8.32	7.202		
2,000.0	2,000.0	2,000.0	2,000.0	4.4	4.4	89.97	0.0	59.9	59.9	51.1	8.77	6.832		
2,100.0	2,100.0	2,100.0	2,100.0	4.6	4.6	89.97	0.0	59.9	59.9	50.7	9.22	6.499		
2,200.0	2,200.0	2,200.0	2,200.0	4.8	4.8	89.97	0.0	59.9	59.9	50.2	9.66	6.197		
2,300.0	2,300.0	2,300.0	2,300.0	5.1	5.1	89.97	0.0	59.9	59.9	49.8	10.11	5.921		
2,400.0	2,400.0	2,400.0	2,400.0	5.3	5.3	89.97	0.0	59.9	59.9	49.3	10.56	5.669		
2,500.0	2,500.0	2,500.0	2,500.0	5.5	5.5	89.97	0.0	59.9	59.9	48.9	11.01	5.438		
2,600.0	2,600.0	2,600.0	2,600.0	5.7	5.7	89.97	0.0	59.9	59.9	48.4	11.46	5.225		
2,700.0	2,700.0	2,700.0	2,700.0	6.0	6.0	89.97	0.0	59.9	59.9	48.0	11.91	5.027		
2,800.0	2,800.0	2,800.0	2,800.0	6.2	6.2	89.97	0.0	59.9	59.9	47.5	12.36	4.845		
2,900.0	2,900.0	2,900.0	2,900.0	6.4	6.4	89.97	0.0	59.9	59.9	47.1	12.81	4.675		
3,000.0	3,000.0	3,000.0	3,000.0	6.6	6.6	89.97	0.0	59.9	59.9	46.6	13.26	4.516		
3,100.0	3,100.0	3,100.0	3,100.0	6.9	6.9	89.97	0.0	59.9	59.9	46.2	13.71	4.368		
3,200.0	3,200.0	3,200.0	3,200.0	7.1	7.1	89.97	0.0	59.9	59.9	45.7	14.16	4.229		
3,300.0	3,300.0	3,300.0	3,300.0	7.3	7.3	89.97	0.0	59.9	59.9	45.3	14.61	4.099		
3,400.0	3,400.0	3,400.0	3,400.0	7.5	7.5	89.97	0.0	59.9	59.9	44.8	15.06	3.977		
3,500.0	3,500.0	3,500.0	3,500.0	7.8	7.8	89.97	0.0	59.9	59.9	44.4	15.51	3.862		
3,600.0	3,600.0	3,600.0	3,600.0	8.0	8.0	89.97	0.0	59.9	59.9	43.9	15.96	3.753		
3,700.0	3,700.0	3,700.0	3,700.0	8.2	8.2	89.97	0.0	59.9	59.9	43.5	16.41	3.650		
3,800.0	3,800.0	3,800.0	3,800.0	8.4	8.4	89.97	0.0	59.9	59.9	43.0	16.86	3.553		
3,900.0	3,900.0	3,900.0	3,900.0	8.7	8.7	89.97	0.0	59.9	59.9	42.6	17.31	3.460		
4,000.0	4,000.0	4,000.0	4,000.0	8.9	8.9	89.97	0.0	59.9	59.9	42.1	17.76	3.373		
4,100.0	4,100.0	4,100.0	4,100.0	9.1	9.1	89.97	0.0	59.9	59.9	41.7	18.21	3.290		
4,200.0	4,200.0	4,200.0	4,200.0	9.3	9.3	89.97	0.0	59.9	59.9	41.2	18.66	3.210		
4,300.0	4,300.0	4,300.0	4,300.0	9.6	9.6	89.97	0.0	59.9	59.9	40.8	19.11	3.135		
4,400.0	4,400.0	4,400.0	4,400.0	9.8	9.8	89.97	0.0	59.9	59.9	40.3	19.55	3.063		
4,500.0	4,500.0	4,500.0	4,500.0	10.0	10.0	89.97	0.0	59.9	59.9	39.9	20.00	2.994		
4,600.0	4,600.0	4,600.0	4,600.0	10.2	10.2	89.97	0.0	59.9	59.9	39.4	20.45	2.928		
4,700.0	4,700.0	4,700.0	4,700.0	10.5	10.5	89.97	0.0	59.9	59.9	39.0	20.90	2.865		
4,800.0	4,800.0	4,800.0	4,800.0	10.7	10.7	89.97	0.0	59.9	59.9	38.5	21.35	2.805		
4,900.0	4,900.0	4,900.0	4,900.0	10.9	10.9	89.97	0.0	59.9	59.9	38.1	21.80	2.747		
5,000.0	5,000.0	5,000.0	5,000.0	11.1	11.1	89.97	0.0	59.9	59.9	37.6	22.25	2.691		
5,100.0	5,100.0	5,100.0	5,100.0	11.4	11.4	89.97	0.0	59.9	59.9	37.2	22.70	2.638		

CC - Min centre to center distance or convergent point, SF - min separation factor, ES - min ellipse separation

Company:	Great Western	Local Co-ordinate Reference:	Well Taoka KF 01-025HN
Project:	SEC.1-T1N-R65W	TVD Reference:	WELL @ 4976.2ft (RKB - 16.5')
Reference Site:	Taoka West Pad Sec.1-T1N-R65W	MD Reference:	WELL @ 4976.2ft (RKB - 16.5')
Site Error:	0.0ft	North Reference:	True
Reference Well:	Taoka KF 01-025HN	Survey Calculation Method:	Minimum Curvature
Well Error:	0.0ft	Output errors are at	2.00 sigma
Reference Wellbore	Wellbore #1	Database:	Landmark
Reference Design:	Plan #1 (11-15-13)	Offset TVD Reference:	Offset Datum

Offset Design Taoka West Pad Sec.1-T1N-R65W - Taoka KF 01-028HC - Wellbore #1 - Plan #1 (11-18-13)												Offset Site Error:	0.0 ft
Survey Program: 0-MWD												Offset Well Error:	0.0 ft
Reference		Offset		Semi Major Axis			Distance						
Measured Depth (ft)	Vertical Depth (ft)	Measured Depth (ft)	Vertical Depth (ft)	Reference (ft)	Offset (ft)	Highside Toolface (°)	Offset Wellbore Centre +N/-S (ft)	+E/-W (ft)	Between Centres (ft)	Between Ellipses (ft)	Minimum Separation (ft)	Separation Factor	Warning
5,200.0	5,200.0	5,200.0	5,200.0	11.6	11.6	89.97	0.0	59.9	59.9	36.7	23.15	2.587	
5,264.9	5,264.9	5,264.9	5,264.9	11.7	11.7	89.97	0.0	59.9	59.9	36.4	23.44	2.555 CC	
5,300.0	5,300.0	5,299.9	5,299.9	11.8	11.8	89.97	0.0	59.9	59.9	36.3	23.60	2.538 ES, SF	
5,400.0	5,400.0	5,398.2	5,398.1	12.0	12.0	90.92	-1.0	61.4	61.5	37.5	24.00	2.562	
5,500.0	5,500.0	5,496.1	5,496.0	12.2	12.2	93.35	-3.8	65.8	66.0	41.6	24.40	2.705	
5,600.0	5,600.0	5,593.7	5,593.1	12.5	12.3	96.66	-8.5	72.9	73.7	48.9	24.81	2.971	
5,700.0	5,700.0	5,690.5	5,689.3	12.7	12.5	100.24	-14.9	82.7	84.7	59.5	25.22	3.359	
5,800.0	5,799.9	5,786.4	5,784.0	12.9	12.7	-112.46	-23.1	95.0	100.0	74.5	25.57	3.913	
5,900.0	5,899.1	5,880.3	5,876.3	13.1	12.9	-113.50	-32.7	109.7	122.3	96.5	25.87	4.729	
6,000.0	5,996.4	5,971.2	5,964.9	13.3	13.1	-116.44	-43.6	126.3	152.1	126.0	26.11	5.825	
6,100.0	6,090.8	6,057.9	6,048.9	13.5	13.4	-119.66	-55.4	144.3	190.0	163.7	26.26	7.235	
6,200.0	6,181.3	6,139.5	6,127.3	13.7	13.6	-122.31	-67.8	163.2	236.4	210.0	26.33	8.976	
6,300.0	6,268.1	6,216.3	6,200.5	14.0	13.8	-125.98	-80.6	182.6	289.9	263.4	26.51	10.934	
6,400.0	6,354.7	6,291.5	6,271.5	14.4	14.1	-128.99	-94.2	203.3	346.3	319.5	26.84	12.903	
6,500.0	6,443.4	6,365.7	6,341.0	14.9	14.4	-150.98	-108.6	225.2	404.3	377.2	27.10	14.918	
6,600.0	6,537.2	6,437.9	6,407.8	15.2	14.6	169.86	-123.5	247.9	461.7	433.9	27.81	16.604	
6,700.0	6,631.6	6,500.0	6,464.8	15.6	14.9	129.78	-137.1	268.6	517.5	488.8	28.64	18.067	
6,800.0	6,721.7	6,559.4	6,518.8	15.8	15.2	106.23	-150.7	289.3	572.3	542.9	29.38	19.481	
6,900.0	6,802.8	6,600.0	6,555.3	15.9	15.4	92.07	-160.4	304.0	627.1	597.2	29.85	21.005	
7,000.0	6,870.9	6,632.4	6,584.4	16.0	15.6	82.31	-168.3	316.1	682.0	652.0	29.99	22.741	
7,100.0	6,922.4	6,647.7	6,598.0	16.2	15.7	73.81	-172.1	321.9	736.5	706.9	29.59	24.889	
7,200.0	6,954.7	6,648.9	6,599.1	16.5	15.7	66.23	-172.4	322.3	789.0	760.4	28.64	27.552	
7,300.0	6,966.2	6,636.8	6,588.3	17.0	15.6	59.72	-169.4	317.7	837.7	810.3	27.42	30.551	
7,400.0	6,966.2	6,618.1	6,571.5	17.5	15.5	58.20	-164.8	310.7	887.4	859.8	27.56	32.200	
7,500.0	6,966.2	6,600.0	6,555.3	18.4	15.4	56.88	-160.4	304.0	944.5	916.6	27.92	33.833	
7,600.0	6,966.2	7,867.3	7,207.2	19.3	20.8	104.50	510.4	611.4	962.3	925.9	36.46	26.396	
7,700.0	6,966.2	7,967.3	7,207.2	20.4	21.7	104.51	610.4	612.0	962.2	923.6	38.59	24.931	
7,800.0	6,966.2	8,067.3	7,207.2	21.6	22.8	104.51	710.4	612.6	962.0	921.0	40.96	23.488	
7,900.0	6,966.2	8,167.3	7,207.2	22.9	24.0	104.51	810.4	613.3	961.8	918.3	43.51	22.106	
8,000.0	6,966.2	8,267.3	7,207.2	24.3	25.3	104.51	910.4	613.9	961.7	915.4	46.22	20.804	
8,100.0	6,966.2	8,367.3	7,207.2	25.7	26.6	104.52	1,010.4	614.5	961.5	912.4	49.07	19.594	
8,200.0	6,966.2	8,467.3	7,207.2	27.2	28.1	104.52	1,110.4	615.2	961.3	909.3	52.03	18.477	
8,300.0	6,966.2	8,567.3	7,207.2	28.8	29.6	104.52	1,210.4	615.8	961.2	906.1	55.08	17.451	
8,400.0	6,966.2	8,667.3	7,207.2	30.4	31.1	104.52	1,310.4	616.4	961.0	902.8	58.21	16.510	
8,500.0	6,966.2	8,767.3	7,207.2	32.0	32.7	104.53	1,410.4	617.1	960.8	899.4	61.40	15.649	
8,600.0	6,966.2	8,867.3	7,207.2	33.7	34.3	104.53	1,510.4	617.7	960.7	896.0	64.65	14.859	
8,700.0	6,966.2	8,967.3	7,207.2	35.4	35.9	104.53	1,610.4	618.3	960.5	892.6	67.95	14.135	
8,800.0	6,966.2	9,067.3	7,207.2	37.1	37.6	104.53	1,710.4	619.0	960.3	889.0	71.29	13.470	
8,900.0	6,966.2	9,167.3	7,207.2	38.8	39.3	104.54	1,810.4	619.6	960.2	885.5	74.67	12.859	
9,000.0	6,966.2	9,267.3	7,207.2	40.5	41.0	104.54	1,910.4	620.2	960.0	881.9	78.08	12.295	
9,100.0	6,966.2	9,367.3	7,207.2	42.3	42.7	104.54	2,010.4	620.9	959.8	878.3	81.52	11.775	
9,200.0	6,966.2	9,467.3	7,207.2	44.1	44.4	104.54	2,110.4	621.5	959.7	874.7	84.98	11.293	
9,300.0	6,966.2	9,567.3	7,207.2	45.9	46.2	104.55	2,210.3	622.2	959.5	871.0	88.46	10.847	
9,400.0	6,966.2	9,667.3	7,207.2	47.6	48.0	104.55	2,310.3	622.8	959.3	867.4	91.96	10.432	
9,500.0	6,966.2	9,767.3	7,207.2	49.4	49.7	104.55	2,410.3	623.4	959.2	863.7	95.48	10.046	
9,600.0	6,966.2	9,867.3	7,207.2	51.3	51.5	104.55	2,510.3	624.1	959.0	860.0	99.01	9.686	
9,700.0	6,966.2	9,967.3	7,207.2	53.1	53.3	104.56	2,610.3	624.7	958.8	856.3	102.55	9.350	
9,800.0	6,966.2	10,067.3	7,207.2	54.9	55.1	104.56	2,710.3	625.3	958.7	852.6	106.11	9.035	
9,900.0	6,966.2	10,167.3	7,207.2	56.7	56.9	104.56	2,810.3	626.0	958.5	848.8	109.68	8.739	
10,000.0	6,966.2	10,267.3	7,207.2	58.6	58.8	104.57	2,910.3	626.6	958.3	845.1	113.26	8.462	
10,100.0	6,966.2	10,367.3	7,207.2	60.4	60.6	104.57	3,010.3	627.2	958.2	841.3	116.84	8.200	
10,200.0	6,966.2	10,467.3	7,207.2	62.2	62.4	104.57	3,110.3	627.9	958.0	837.6	120.44	7.954	

CC - Min centre to center distance or convergent point, SF - min separation factor, ES - min ellipse separation

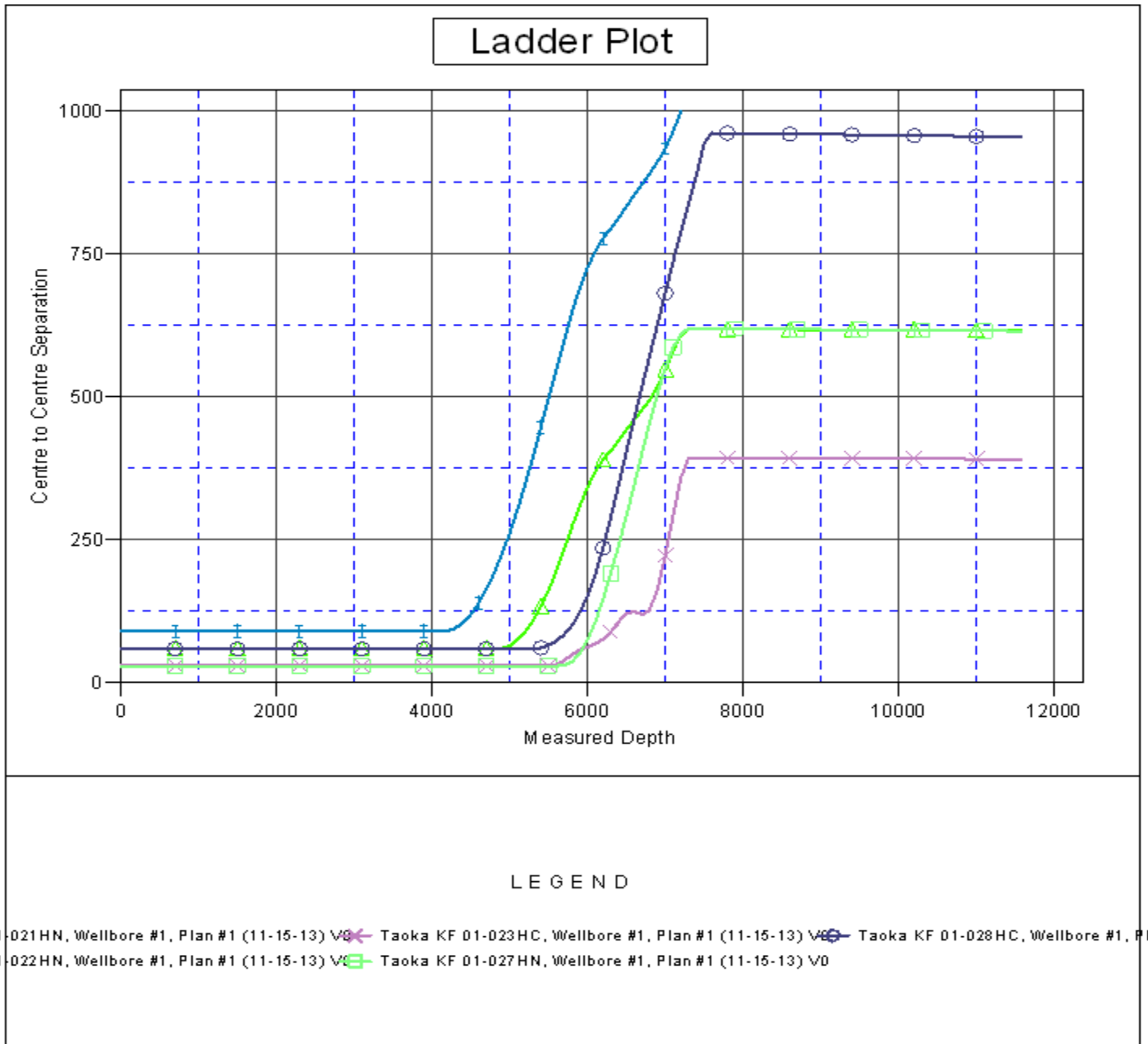
Company:	Great Western	Local Co-ordinate Reference:	Well Taoka KF 01-025HN
Project:	SEC.1-T1N-R65W	TVD Reference:	WELL @ 4976.2ft (RKB - 16.5')
Reference Site:	Taoka West Pad Sec.1-T1N-R65W	MD Reference:	WELL @ 4976.2ft (RKB - 16.5')
Site Error:	0.0ft	North Reference:	True
Reference Well:	Taoka KF 01-025HN	Survey Calculation Method:	Minimum Curvature
Well Error:	0.0ft	Output errors are at	2.00 sigma
Reference Wellbore	Wellbore #1	Database:	Landmark
Reference Design:	Plan #1 (11-15-13)	Offset TVD Reference:	Offset Datum

Offset Design Taoka West Pad Sec.1-T1N-R65W - Taoka KF 01-028HC - Wellbore #1 - Plan #1 (11-18-13)												Offset Site Error:	0.0 ft
Survey Program: 0-MWD												Offset Well Error:	0.0 ft
Reference	Offset	Semi Major Axis		Distance									
Measured Depth (ft)	Vertical Depth (ft)	Measured Depth (ft)	Vertical Depth (ft)	Reference (ft)	Offset (ft)	Highside Toolface (°)	Offset Wellbore Centre +N/-S (ft)	+E/-W (ft)	Between Centres (ft)	Between Ellipses (ft)	Minimum Separation (ft)	Separation Factor	Warning
10,300.0	6,966.2	10,567.3	7,207.2	64.1	64.3	104.57	3,210.3	628.5	957.8	833.8	124.04	7.722	
10,400.0	6,966.2	10,667.3	7,207.2	65.9	66.1	104.58	3,310.3	629.1	957.7	830.0	127.65	7.502	
10,500.0	6,966.2	10,767.3	7,207.2	67.8	67.9	104.58	3,410.3	629.8	957.5	826.2	131.27	7.294	
10,600.0	6,966.2	10,867.3	7,207.2	69.7	69.8	104.58	3,510.3	630.4	957.3	822.4	134.89	7.097	
10,700.0	6,966.2	10,967.3	7,207.2	71.5	71.6	104.58	3,610.3	631.0	957.2	818.6	138.51	6.910	
10,800.0	6,966.2	11,067.3	7,207.2	73.4	73.5	104.59	3,710.3	631.7	957.0	814.8	142.14	6.733	
10,900.0	6,966.2	11,167.3	7,207.2	75.3	75.3	104.59	3,810.3	632.3	956.8	811.0	145.78	6.563	
11,000.0	6,966.2	11,267.3	7,207.2	77.1	77.2	104.59	3,910.3	632.9	956.7	807.2	149.42	6.402	
11,100.0	6,966.2	11,367.3	7,207.2	79.0	79.1	104.59	4,010.3	633.6	956.5	803.4	153.06	6.249	
11,200.0	6,966.2	11,467.3	7,207.2	80.9	80.9	104.60	4,110.3	634.2	956.3	799.6	156.71	6.102	
11,300.0	6,966.2	11,567.3	7,207.2	82.7	82.8	104.60	4,210.3	634.8	956.2	795.8	160.36	5.963	
11,400.0	6,966.2	11,667.3	7,207.2	84.6	84.7	104.60	4,310.3	635.5	956.0	792.0	164.02	5.829	
11,500.0	6,966.2	11,767.3	7,207.2	86.5	86.5	104.60	4,410.3	636.1	955.8	788.2	167.67	5.701	
11,576.7	6,966.2	11,843.0	7,207.2	87.9	87.8	104.61	4,485.9	636.6	955.7	785.4	170.31	5.612	

Company:	Great Western	Local Co-ordinate Reference:	Well Taoka KF 01-025HN
Project:	SEC.1-T1N-R65W	TVD Reference:	WELL @ 4976.2ft (RKB - 16.5')
Reference Site:	Taoka West Pad Sec.1-T1N-R65W	MD Reference:	WELL @ 4976.2ft (RKB - 16.5')
Site Error:	0.0ft	North Reference:	True
Reference Well:	Taoka KF 01-025HN	Survey Calculation Method:	Minimum Curvature
Well Error:	0.0ft	Output errors are at	2.00 sigma
Reference Wellbore	Wellbore #1	Database:	Landmark
Reference Design:	Plan #1 (11-15-13)	Offset TVD Reference:	Offset Datum

Reference Depths are relative to WELL @ 4976.2ft (RKB - 16.5')
Offset Depths are relative to Offset Datum
Central Meridian is -105.500000 °

Coordinates are relative to: Taoka KF 01-025HN
Coordinate System is US State Plane 1983, Colorado Northern Zone
Grid Convergence at Surface is: 0.57°



Company:	Great Western	Local Co-ordinate Reference:	Well Taoka KF 01-025HN
Project:	SEC.1-T1N-R65W	TVD Reference:	WELL @ 4976.2ft (RKB - 16.5')
Reference Site:	Taoka West Pad Sec.1-T1N-R65W	MD Reference:	WELL @ 4976.2ft (RKB - 16.5')
Site Error:	0.0ft	North Reference:	True
Reference Well:	Taoka KF 01-025HN	Survey Calculation Method:	Minimum Curvature
Well Error:	0.0ft	Output errors are at	2.00 sigma
Reference Wellbore	Wellbore #1	Database:	Landmark
Reference Design:	Plan #1 (11-15-13)	Offset TVD Reference:	Offset Datum

Reference Depths are relative to WELL @ 4976.2ft (RKB - 16.5')
Offset Depths are relative to Offset Datum
Central Meridian is -105.500000 °

Coordinates are relative to: Taoka KF 01-025HN
Coordinate System is US State Plane 1983, Colorado Northern Zone
Grid Convergence at Surface is: 0.57°

