

Private Alum. Cap
0.3' Below Ground
LS 16406
Lat: 40.087522°
Long: 104.621461°

589.36'27"E - 2628.29' (Meas.)

W.C.
2012 Private Alum. Cap,
0.2' Below Ground, PLS 28285
Lat: 40.087478°
Long: 104.613731°

Private Alum. Cap
0.2' Below Ground
LS 25937
Lat: 40.087417°
Long: 104.602675°

GREAT WESTERN OIL & GAS COMPANY
Well location, TAOKA KF 01-021HN, located as shown in the SW 1/4 SW 1/4 of Section 1, T1N, R65W, 6th P.M., Weld County, Colorado.

BASIS OF ELEVATION

HUBBS TRIANGULATION STATION LOCATED IN THE NE 1/4 OF SECTION 21, T1N, R64W, 6th. P.M., TAKEN FROM THE KEENESBURG, QUADRANGLE, COLORADO, WELD COUNTY, 7.5 MINUTE QUAD (TOPOGRAPHIC MAP) PUBLISHED BY THE UNITED STATES DEPARTMENT OF THE INTERIOR, GEOLOGICAL SURVEY. SAID ELEVATION IS MARKED AS BEING 5168 FEET.

BASIS OF BEARINGS

BASIS OF BEARINGS IS A G.P.S. OBSERVATION.

LEGEND:

90° SYMBOL

● PROPOSED WELL HEAD.

◇ PROPOSED ENTRY POINT.

☐ PROPOSED TARGET BOTTOM HOLE.

SECTION CORNERS LOCATED.

Δ SECTION CORNERS RE-ESTABLISHED.

(Not Set on Ground.)

Private Alum.
Cap, 0.3' High
LS 36561
Lat: 40.080319°
Long: 104.602669

1000'

500'

0'

1000'

SCALE

CERTIFICATE

THIS IS TO CERTIFY THAT THE ABOVE PLAT WAS PREPARED FROM FIELD NOTES OF ACTUAL SURVEYS MADE BY ME OR UNDER MY SUPERVISION AND THAT THE SAME ARE TRUE AND CORRECT TO THE BEST OF MY KNOWLEDGE AND BELIEF.

REGISTERED LAND SURVEYOR
REGISTRATION NO. VZ492
STATE OF COLORADO

REMSD: 10-22-13
REMSD: 05-02-13

UNTIAH ENGINEERING & LAND SURVEYING
85 SOUTH 200 EAST - VERNAL, UTAH 84078
(435) 789-1017

(435) 789-1017

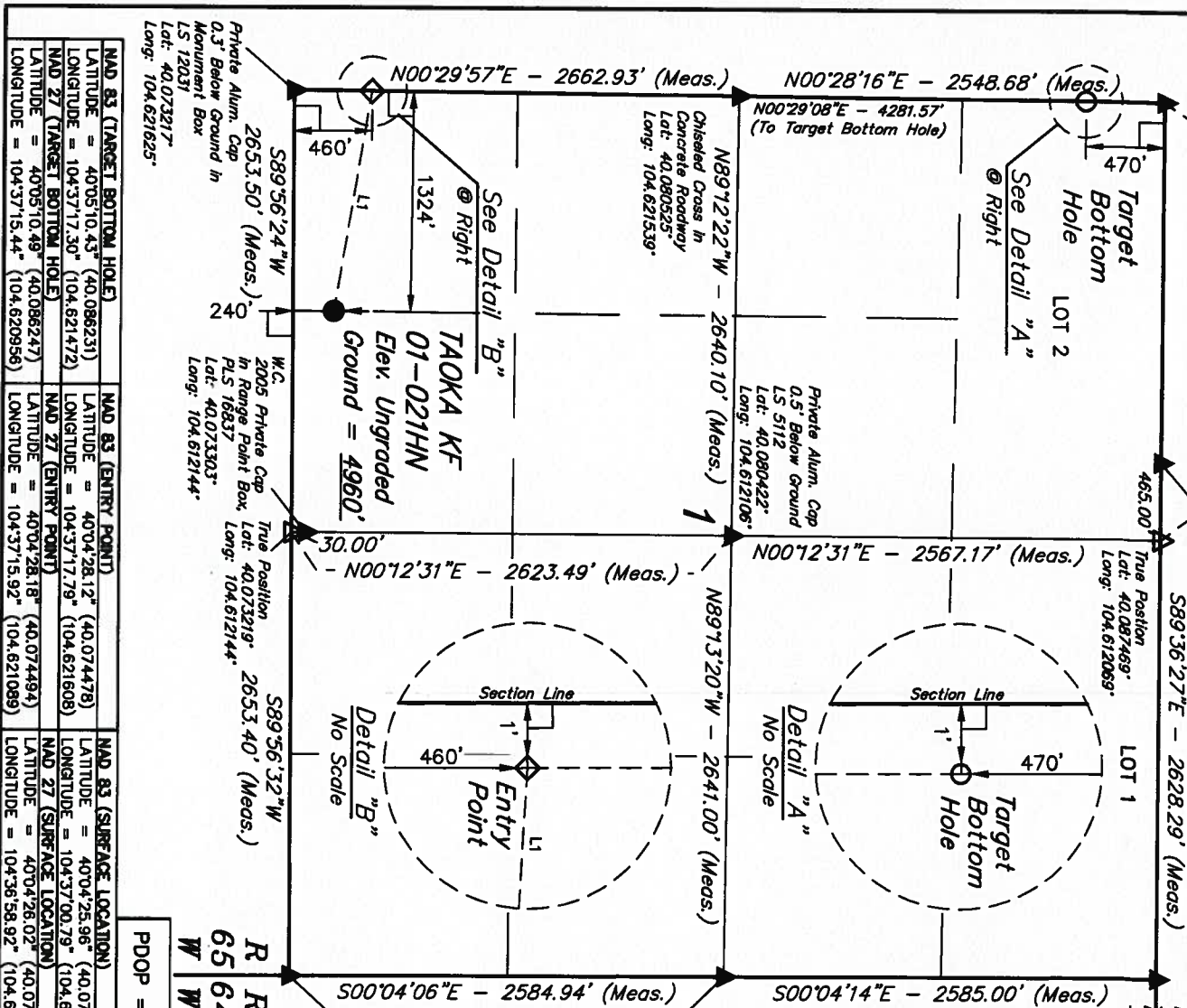
SCALE
1" = 1000'

TE SURVEYED:	DATE DRAWN:
02-22-13	02-25-13

Z.B. A.G. J.W.

G.L.O. PLAT

WEATHER	FILE
COOL	GREAT WESTERN OIL & GAS COMPANY



LINE TABLE		
LINE	DIRECTION	LENGTH
L1	N80°36'09"W	1339.43'